

20  
50

This file contains work performed by Thomas Martin on claims

L.242780

265

Hole # 1

November, 1970

222

2

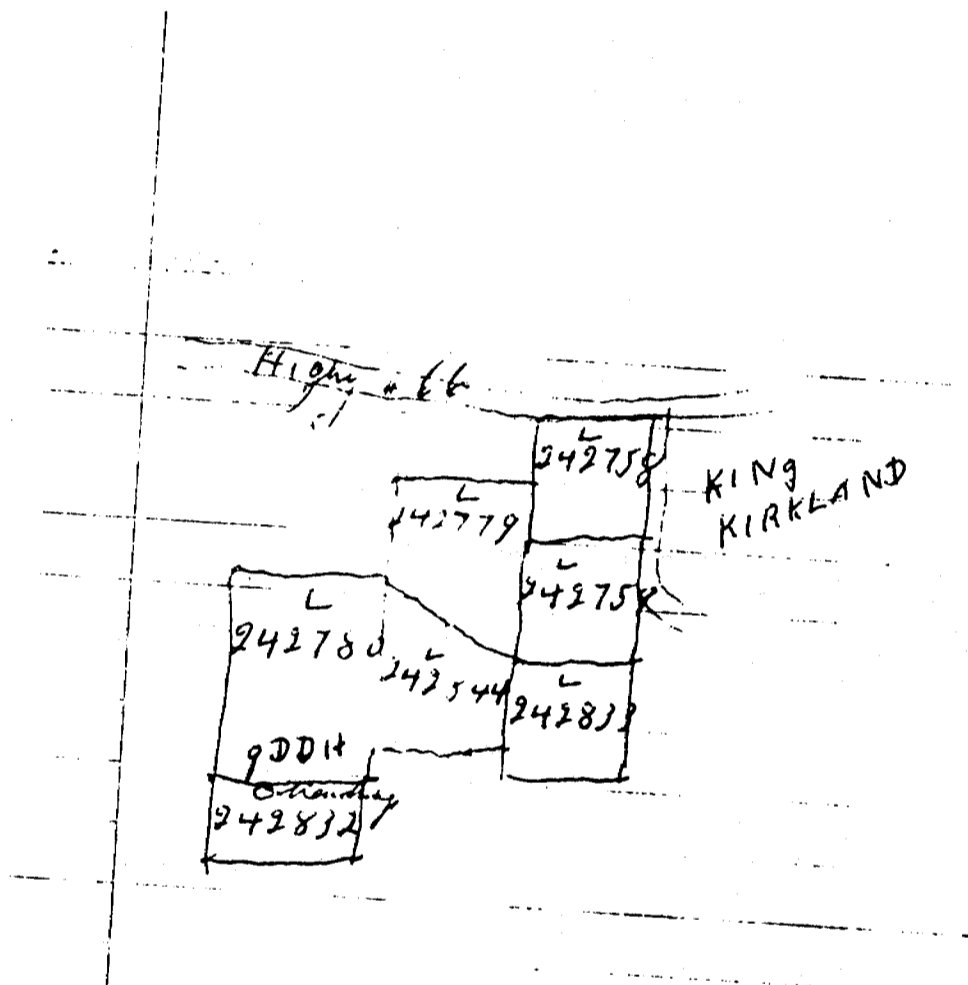
Sept/72

487

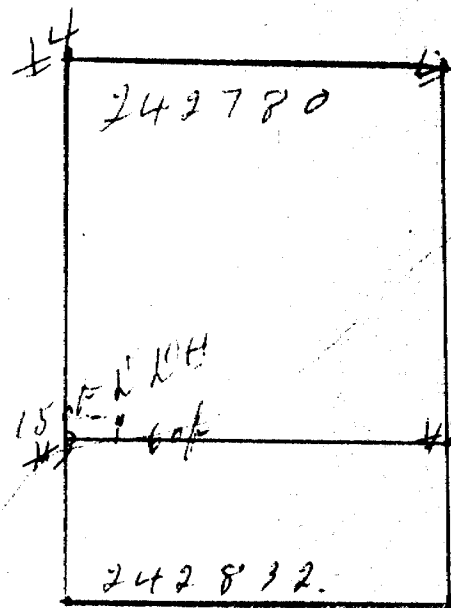


32D04NW0296 14 LABEL

010



# 230/70 Label Top  
 The Martin



41 N hole  
 located S. w  
 corner of claim  
 242780. 150 ft  
 from w boundary  
 60 ft from  
 S. boundary claim  
 242832

#25171 Label Japs  
 Tho. Martin



THE MINING ACT - DEPARTMENT OF MINES  
**DIAMOND DRILLING LOG**

Start a new page for every new hole, but fill in top portion of form only on first page for each hole.

FILL IN ON EVERY PAGE

HOLE NO. 1 PAGE NO.

DRILLING COMPANY <b>T. MARTIN, DANE, ONT</b>		COLLAR ELEVATION	BEARING OF HOLE FROM TRUE NORTH <b>MAG. NORTH</b>	TOTAL FOOTAGE <b>200</b>	DIP OF HOLE AT collar   <b>45</b>		LOCATION OF HOLE IN RELATION TO A FIXED POINT ON THE CLAIM  <b>85' EAST AND 60' NORTH FROM POST # 3.</b>	MAP REFERENCE NO. <b>O.P.M 53-A</b>	CLAIM NO. <b>L-242700</b>	
DATE HOLE STARTED <b>NOV 14/70</b>	DATE COMPLETED <b>NOV. 19/70</b>	DATE LOGGED <b>NOV. 20/70</b>	LOGGED BY <b>W. GERRIE, P. ENG.</b>		ft			LOCATION (Tp., Lot, Con. OR Lat. and Long.) <b>LEBEL TOWNSHIP 2 (FORMERLY KICK ROVAL 2037)</b>	PROPERTY NAME	
EXPLORATION CO., OWNER OR OPTIONEE <b>T. MARTIN</b>		DATE SUBMITTED	SUBMITTED BY (Signature)		ft					
					ft					

FOOTAGE		ROCK TYPE	DESCRIPTION Colour, grain size, texture, minerals, alteration, etc.	PLANAR FEATURE ANGLE *	CORE SPECIMEN FOOTAGE +	YOUR SAMPLE NUMBER	SAMPLE FOOTAGE		SAMPLE LENGTH	ASSAYS +	
FROM	TO						FROM	TO			
	1.9	TRACHYTE	GRAY SPOTTED + WEATHERED; SILEX SHEARS; BROKEN CORE								
1.9	18.3	"	DARK REDDISH GRAY, SPOTTED PORPHYRY TYPE, SHEARED AND ALTERED; FINE QUARTZ - FELDSPAR VEINING ESPECIALLY AT 5.5 TO 8.5; LOWER CONTACT GRADATIONAL	60	2.5						
18.3	35.5	"	DARK GRAY TINGED WITH RED, MASSIVE, FINE GRAINED AND SPOTTED		27						
35.5	37.8	"	GREENISH GRAY + VARIEGATED; ALSO THIN BEDS OF TUFF; SHEARED + BEDDED	60							
37.8	57.6	"	DARK GREENISH GRAY WITH PINK SECTIONS; SPOTTED PORPHYRY TYPE; PROMOUNCED SHEARING; SOME SCATTERED VEINING	70							
57.6	60.0	VEIN MATTER	CHIEFLY QUARTZ AND WHITE FELDSPAR, SPLIT BY THIN BANDS OF CHLORITIZED TRACHYTE, UPPER CONTACT 75 DEG, LOWER IRREGULAR								
60.0	95.0	TRACHYTE	DARK GREENISH GRAY, LESS PORPHYRITIC THAN ABOVE, HEAVILY SHEARED; SCATTERED VEINETS OF QUARTZ - FELDSPAR, 91-92, HEAVILY VEINED SECTION, REDDISH IN COLOUR		68						
95.0	104.5	"	PALE GREENISH GRAY, PORPHYRITIC, SHEARED AND ALTERED; COLOUR SUGGESTS SERICITIZATION.		95						
104.5	110.0	"	PALE GREENISH GRAY BUT VARIEGATED; SHOWS FINE GRAINED BANDS WITH CONTACTS AT 60-70 DEG.	60-70	100						
110.0	165.0	"	PALE GREENISH GRAY, PORPHYRITIC, SHEARED AND ALTERED, ALSO LIGHTLY VEINED; SMALLER VEINETS ARE PARALLEL TO SHEARING BUT LARGER VEINETS ARE IRREGULAR. NOTE VEINETS AT 137 (2"), 134.4 (3") AND 159.6 (4")	60-70	141						
			124.4 - 125, LOST CORE								
165.0	187.2	"	GREENISH GRAY, SPOTTED, SHEARED AND HIGHLY ALTERED; CORE HAS A STREAKY APPEARANCE	60-80	177						
187.2	190.0	"	GREENISH GRAY, FINE GRAINED AND BANDED, ALSO HIGHLY ALTERED								
			188.1 - 189.7, LOST CORE								
190.0	200.0	"	GREENISH GRAY + FINE GRAINED; POSSIBLY TUFF IN PART; CONSIDERABLY ALTERED AND VEINED.								

\* For features such as foliation, bedding, schistosity, measured from the long axis of the core.



Labels	Type	
	242779	242759
242780 (2037) 160 66 ft 450	<del>242779</del> 242844	242833
242872		

Samples every 5'  
1 day's work

3/11/72 Lebel Surf.

Thomas Martin.

# DIAMOND DRILL RECORD

PROPERTY Claim 242780, Label Tp., (formerly 2037) HOLE NO. 2

SHOT NUMBER 1 SECTION FROM 0 TO 136.8 STARTED Sept. 16/72.  
 LATITUDE 66° North of #3 post DATUM COMPLETED Oct. 14/72.  
 DEPARTURE 100' East of #3 post BEARING South ULTIMATE DEPTH 222'  
 ELEVATION Diameter of core 15/16" DIP 45 deg. PROPOSED DEPTH

DEPTH FEET	FORMATION	SAMPLE NO.	WIDTH OF SAMPLE	GOLD g	SLUDGE GOLD g
0 - 26.3	Trachyte porphyry, gray-green & sheared; plane of shearing is at 40deg. to the length of core; phenocrysts of white feldspar are abundant, also clots of dark chlorite; matrix is soapy in colour and there is considerable alteration and some light veining.				
26.3- 27.4	Tuff or fine grained trachyte, gray green; laminations at 40 deg. suggest bedding but it may be flow texture; contacts above and below are sharp at 40 deg.				
27.4- 42.5	Trachyte, fine grained but variegated in texture, gray-green with reddish tinges but much darker than above; shows a lot of white speckling, probably leucocoxene; rather massive.				
42.5- 60.0	Trachyte, becoming porphyritic, gray-green with reddish tinge. 76.1-77.0 Irregular chalky quartz-feldspar vein. 77.0-80.0 Broken core.				
60.0- 76.2	Trachyte, as above, becoming more porphyritic, progressively coarser in grain and more sheared.				
76.2-103.4	Trachyte, as above, but heavily sheared with angles varying from 50 to 70 deg.; some scattered veining. 77.4-78.1 Vein matter, mostly quartz. 91.6 1" quartz.				
103.4-116.4	Trachyte, partly porphyritic, gray and more altered than above, less schistose but shows considerable veining; some of this material may be altered amygdaloid.				
116.4-136.8	Trachyte, reddish gray, variegated, speckled and massive; subdued por. texture.				

N.M.P. TORONTO STOCK FORM NO. 501 REV. 12-69

DRILLED BY T. Martin

*W. Gerrie*  
W. Gerrie, P. Eng.

SIGNED

# DIAMOND DRILL RECORD

PROPERTY Claim 242780, Lebal Tp., HOLE NO. 2.

SHEET NUMBER 2 SECTION FROM 136.8 TO 222.0 STARTED \_\_\_\_\_  
 LATITUDE \_\_\_\_\_ DATUM \_\_\_\_\_ COMPLETED \_\_\_\_\_  
 DEPARTURE \_\_\_\_\_ BEARING \_\_\_\_\_ ULTIMATE DEPTH \_\_\_\_\_  
 ELEVATION \_\_\_\_\_ DIP \_\_\_\_\_ PROPOSED DEPTH \_\_\_\_\_

DEPTH FEET	FORMATION	SAMPLE NO	WIDTH OF SAMPLE	GOLD \$	SLUDGE GOLD \$	
136.8-148.0	Trachyte, pinkish gray & more sheared than above with angle varying from 35 to 70 deg.; texture is variegated and there is light veining.					
148.0-175.0	Trachyte, gray mostly and strongly sheared with angles from 0 to 60 deg.; grain varies from fine to porphyritic; note the numerous and distorted quartz-carbonate veinlets.					
	165.0-167.0 Broken core.					
175.0-222.0	Trachyte, mostly gray-green with some pink tinges; fine grained, spotted and por. types; shearing is heavy and varies in angle from 0 to 75 deg. and folding is indicated; veining is quartz-carbonate type and may be heavier than in previous sections.					
	209.0-209.4 Quartz-carbonate vein with some pyrite mineralization.					
	217.7-220.6 Mostly vein matter as above; some lost core here.					
222.0	End of hole.					
<p><u>Notes</u> (1) Core recovery is about 97-98 %.</p> <p>(2) Core is to be stored at 18. Duncan Ave., Kirkland Lake.</p>						

T. Martin

*W. Gerrie*  
W. Gerrie, P. Eng.

SIGNED