

32004NW0361 12 MORRISETTE

010

Diamond Drilling

Township of MORRISETTE

Report N^o 12

Work performed by: Emil Chorzepa

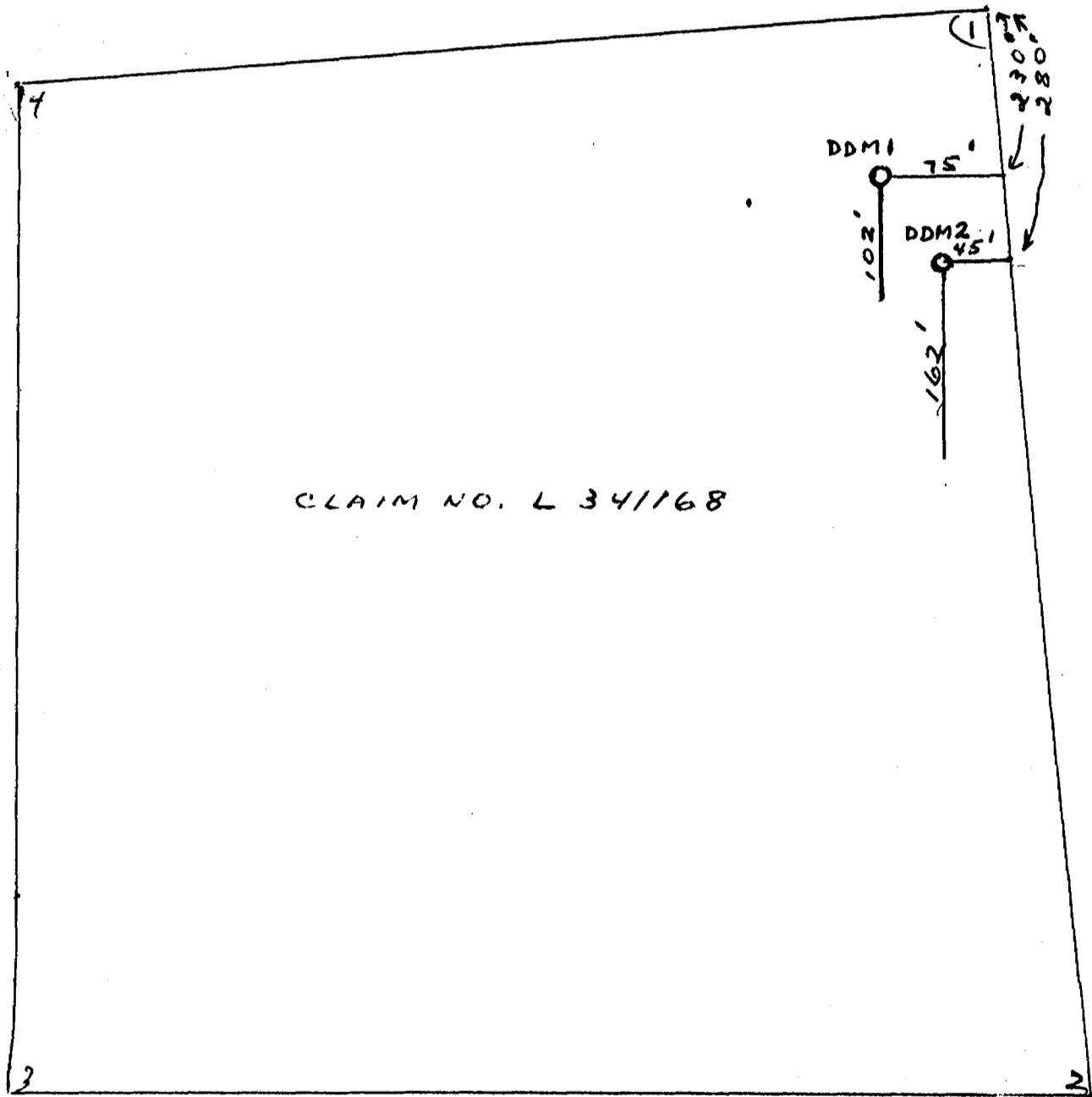
Claim N ^o	Hole N ^o	Footage	Date	Note
L 341168	M-1	102.0'	May/75	(1)
	M-2	162.0'	Sept/75	(1)
	LM-1	151.0'	Oct/76	(2)
L 420725	M-3	172.0'	May/76	(2)
	M-4	178.0'	Aug/76	(2)

Notes:

(1) #261-75

(2) #243-76

SKETCH RE -
DIAMOND DRILLING



DIAMOND DRILL RECORD

PROPERTY E. CHORZEPA CLAIMS HOLE NO. M-2 $\frac{1}{8}$ " CORE DIAMETER

SHEET NUMBER _____ SECTION FROM 0 TO 162 STARTED SEPT. 10, 1975
 LATITUDE } 280 FEET SOUTH DATUM _____ COMPLETED SEPT 29, 1975
 DEPARTURE } AND 45 FEET WEST BEARING DUE SOUTH ULTIMATE DEPTH 162 FEET
 OF NO 1 POST OF CLAIM NO. 341168
 ELEVATION _____ DIP -54° PROPOSED DEPTH _____

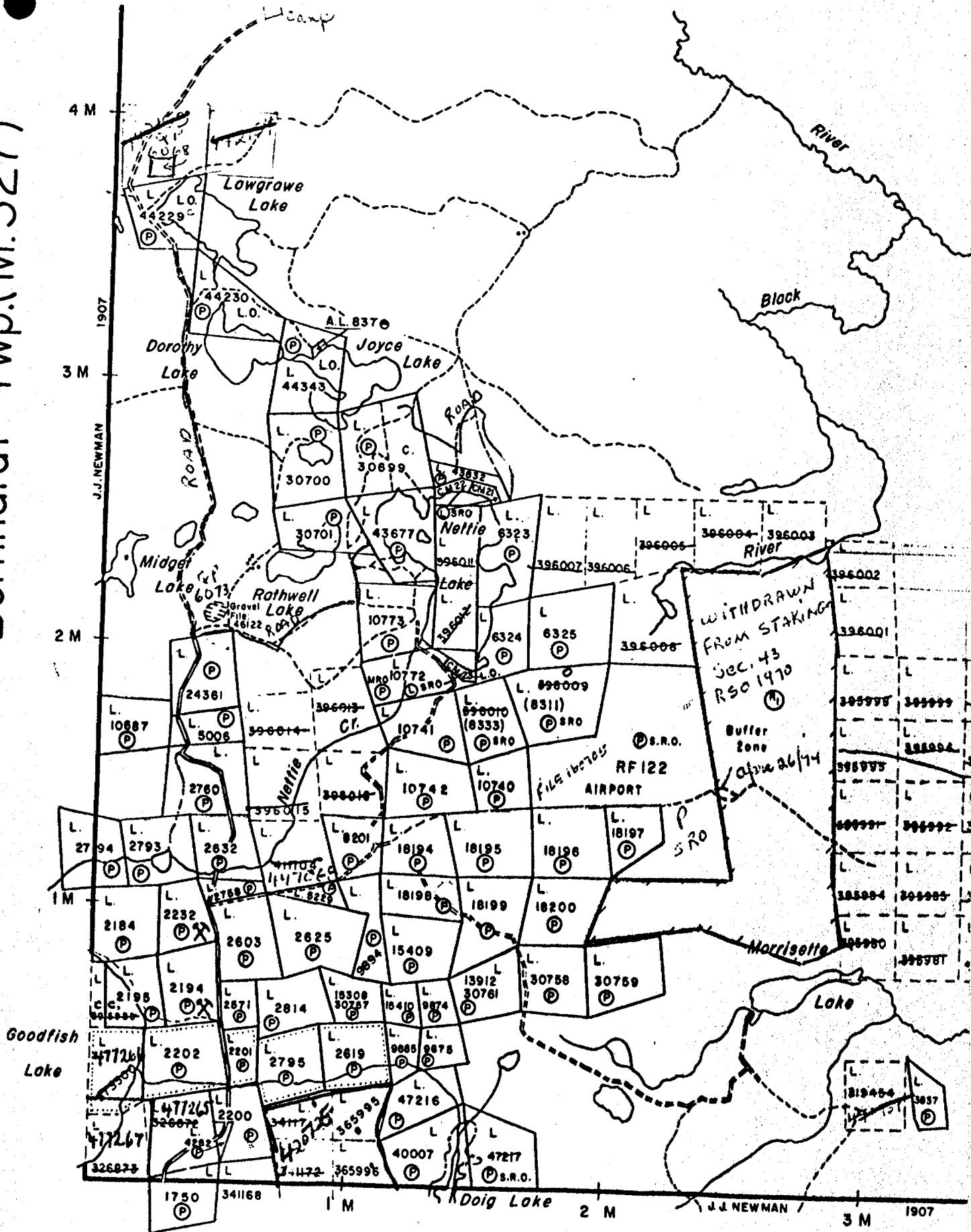
DEPTH FEET	FORMATION	SAMPLE NO.	WIDTH OF SAMPLE	GOLD %	SLUDGE GOLD %	
0 - 1'	CASING THROUGH 1' OVERBURDEN	# 1	60-72' 6 FEET	.01		LOST WATER
1 - 4'	QUARTZ PORPHYRY & MINOR PYRITE	# 2	72-73.5' 1.5 FEET	.01		RETURN SO
4 - 66'	ANDESITE CONTAINING MINOR DISSEMINATED IRON PYRITE.	# 3 # 4	73.5-78.5' 5 FEET 85-88' 3 FEET	TRACE		NO SLUDGE SAMPLES !
66 - 96.5'	FRACTURED AND SHEARED QUARTZ PORPHYRY CONTAINING 3-5% FINE DISSEMINATED IRON PYRITE	# 5 # 6 # 7	88-96.5' 7.5 FEET 96.5-97.5' 1 FOOT	.01		TRACE
96.5'	ASSUMED FAULT BECAUSE OF ABOUT 2 INCHES OF "FAULT GORGE," WHITISH CHALKY MATERIAL WHICH HARDENS UPON DRYING, LIKE CEMENT.	# 8 # 9 # 10 # 11	97.5-104' 4.5 FEET 104-107' 3 FEET 107-114' 7 FEET 114-117' 3 FEET	TRACE		NIL NIL .05
96.5 - 139.5'	QUARTZ PORPHYRY RELATIVELY STABLE AND UNFRACTURED CONTAINING VERY LITTLE PYRITE	# 12 # 13 # 14	117-124' 1 FOOT 124-139.5' 3 FEET 139.5-157' 5 FEET	.02		TRACE TRACE
139.5 - 157'	FRACTURED AND SHEARED QUARTZ PORPHYRY CONTAINING 3-5% FINE DISSEMINATED IRON PYRITE, AND OCCASIONAL BLUEISH MINERAL ALONG SLIP & FRACTURE PLANES, WHICH IS PROBABLY MOLYBDENITE.					
157 - 162'	ANDESITE WITH MINOR PYRITE					

N.M.P., TORONTO-STOCK FORM NO. 501 REV. 12/51

DRILLED BY EMIL CHORZEPA

SIGNED Emil Chorzepe

Bernhardt Twp. (M. 327)



morissette Twp & Lebel
M3274

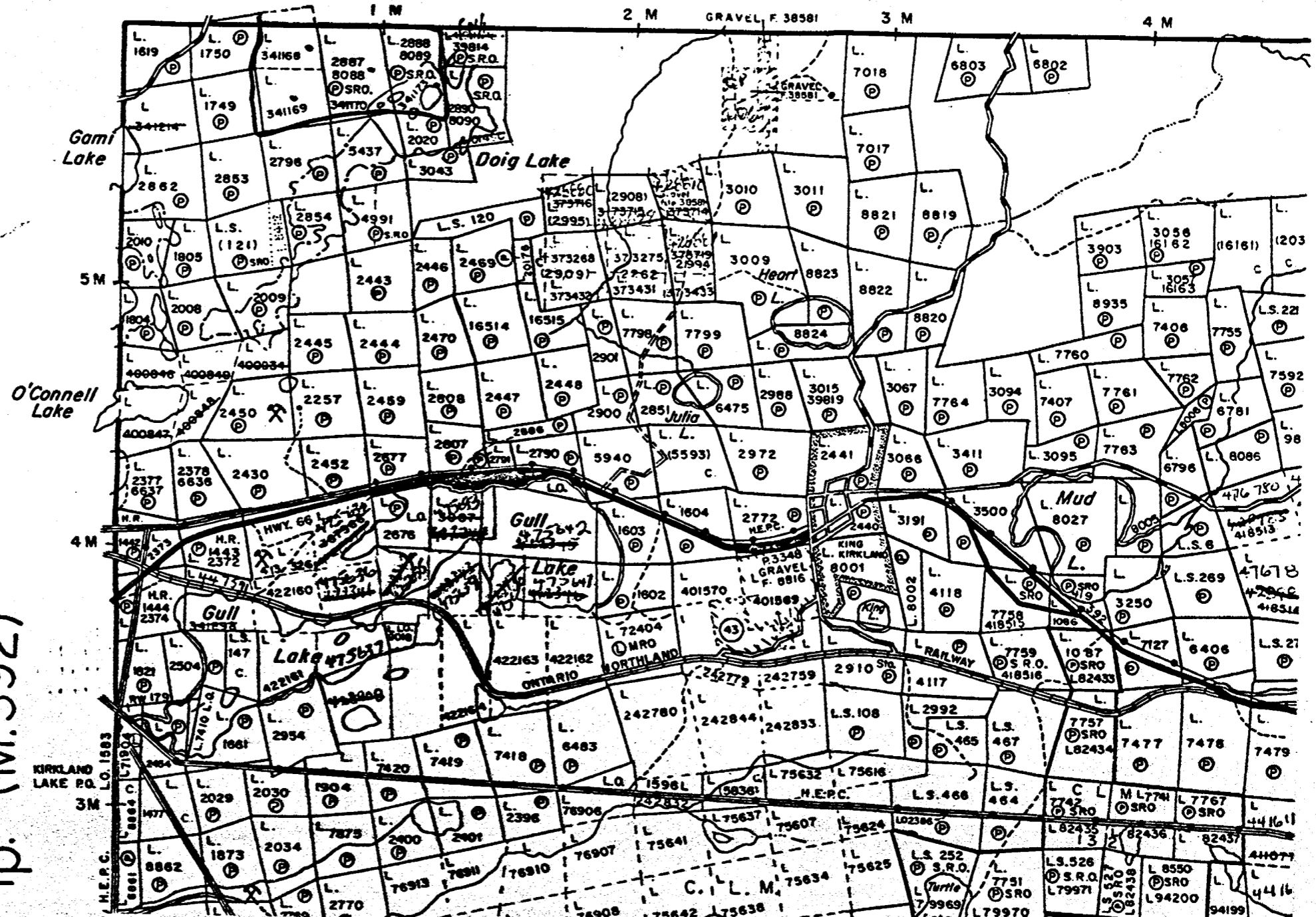
Lebel Twp. (M. 327)

#243-76

EMIL CHORZEPA

Lebel trip
M359

Morrisette Tp. (M.374)



TP. (M.392)



THE MINING ACT - MINISTRY OF NATURAL RESOURCES
DIAMOND DRILLING LOG

Start a new page for every new hole, but fill in top portion of form only on first page for each hole.

FILL IN ON EVERY PAGE

HOLE NO. PAGE NO.

17-3

CLAIM NO.

420725

LOCATION (Tp., Lot, Con. OR Lat. and Long.)

MORRISSETTE TWP.

PROPERTY NAME

CHORZEPA GOLD

DRILLING COMPANY		COLLAR ELEVATION	BEARING OF HOLE FROM TRUE NORTH	TOTAL FOOTAGE	DIP OF HOLE AT	LOCATION OF HOLE IN RELATION TO A FIXED POINT ON THE CLAIM	MAP REFERENCE NO.	CLAIM NO.	
DATE HOLE STARTED	DATE COMPLETED	DATE LOGGED	LOGGED BY	collar -48°			172 ft -45°		
MAY 15 1976	JULY 31 1976	OCT 14 1976	EMIL CHORZEPA						
EXPLORATION CO., OWNER OR OPTIONEE		DATE SUBMITTED	SUBMITTED BY (Signature)		ft		PROPERTY NAME		
EMIL CHORZEPA		OCT 20 1976	Emil Chorzeпа		ft		CHORZEPA GOLD		

FOOTAGE FROM TO		ROCK TYPE	DESCRIPTION Colour, grain size, texture, minerals, alteration, etc.	PLANAR FEATURE ANGLE °	CORE SPECIMEN FOOTAGE +	YOUR SAMPLE NUMBER	SAMPLE FOOTAGE FROM TO		SAMPLE LENGTH	ASSAYS +
0	1.5'	CASING	—			76-5	112.5	115	2.5'	TRACE
1.5'	50.5'	ANDESITE	GREENISH. COARSE GRAINED - SPARSE IRON SULPHIDES			76-6	107.5	112.5	5'	TRACE
						76-7	105	107.5	2.5'	TRACE
50.5	101.5	ANDESITE	BROWNISH UPON WEATHERING DUE TO ABUNDANT FINE SULPHIDES (FE) MUCH FRACTURED & FINE GRAINED - NUMEROUS BANDS, VEINLETS, - STRINGERS OF QTZ - CALCITE ALSO CONTAINING FINE PYRITE (FE). ABOUT 4-5% SULPHIDES THROUGH THIS SECTION.			76-8	99.5	105.5	6'	TRACE
						76-9	97	99.5	2.5'	.06
						76-10	90	97	7'	.01
						76-11	152	154	2'	NIL
						76-12	137	140	3'	NIL
101.5	122	QUARTZ PORPHYRY	VERY SHEARED AND WEARILY BONDED SO THAT ONLY 50% OR LESS OF THE CORE THROUGH THIS ENTIRE SECTION RECOVERED DUE TO UNAVOIDABLE GRINDING - ABUNDANT BANDS, AND FINE SQUARE SULPHIDES NOTED IN THE RECOVERED PORTION - WHITISH IN COLOUR WITH APPROX. 10% SULPHIDES (FE)			76-13	140	145	5'	NIL
						76-14	122	126.5	4.5'	TRACE
						76-15	83	87	4'	.03
						76-16	76	81	5'	TRACE
						76-17	93	97	4'	.03
						76-18	89	93	4'	.03
						76-19	87	89	2'	TRACE
						76-20	81	83	2'	TRACE
						76-21	71	76	5'	TRACE
						76-22	66	71	5'	.02
122	128	QUARTZ PORPHYRY	WHITISH - SOMEWHAT MORE STABLY MOUNDLED TOGETHER - ABOUT 5-7% SULPHIDES (FE)			76-23	61	66	5'	TRACE
						76-24	56	61	5'	TRACE
						76-25	50.5	56	5.5'	TRACE
128	172	ANDESITE	GREENISH - FINE GRAINED - SPARSE QTZ - CALCITE, AND SPARSE SULPHIDES (FE)			76-26	45.5	50.5	5'	TRACE
						76-27	26	31	5'	TRACE
						76-28	5	10	5'	TRACE
						76-29	126.5	131	4.5'	TRACE
						76-30	41.5	46.5	5'	TRACE
						76-31				

CHECK →
" →

* For features such as foliation, bedding, schistosity, measured from the long axis of the core.

* Additional credit available. See Assessment Work Regulations.



THE MINING ACT - MINISTRY OF NATURAL RESOURCES
DIAMOND DRILLING LOG

Start a new page for every new hole, but fill in top portion of form only on first page for each hole.

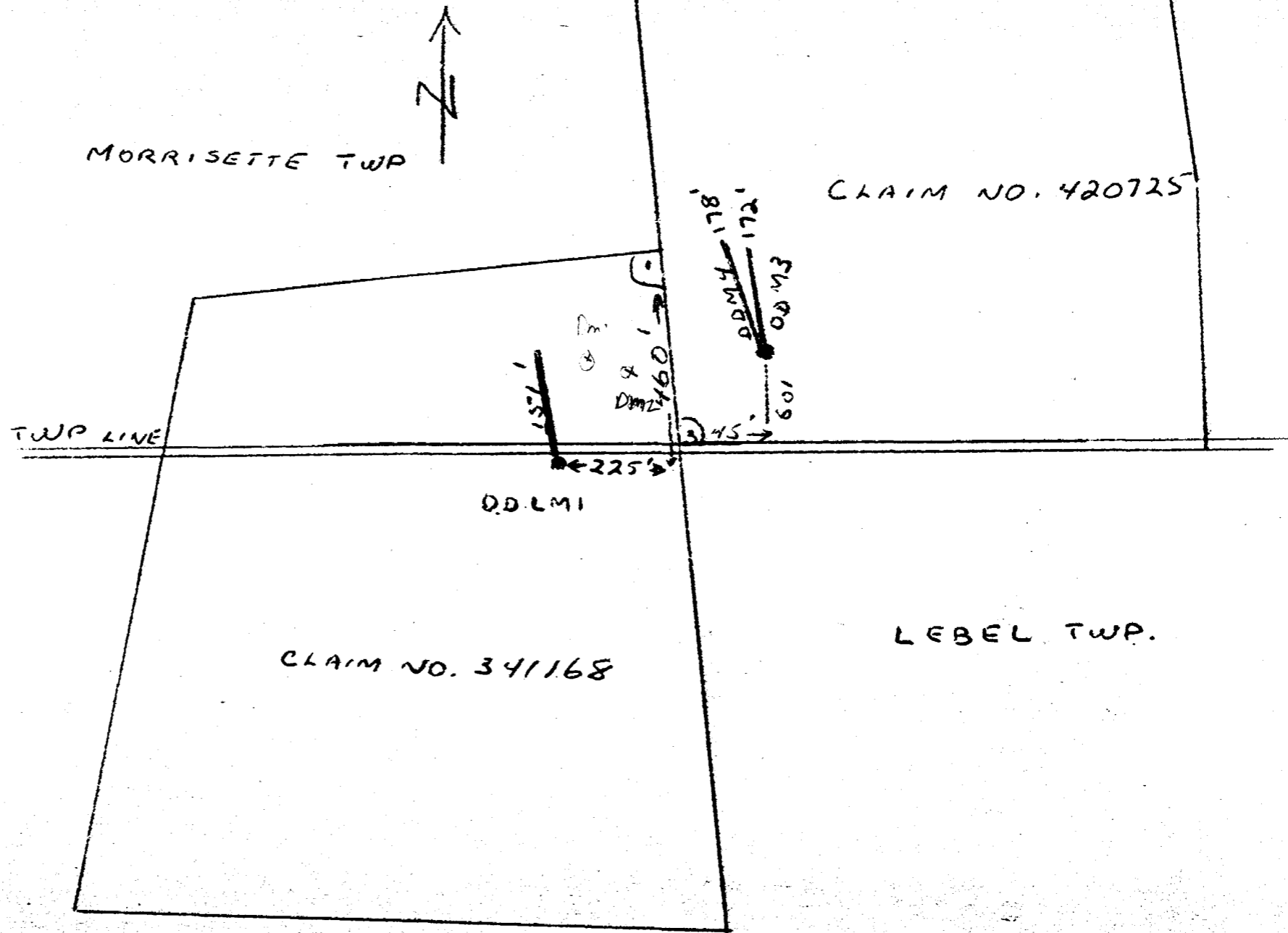
FILL IN ON EVERY PAGE

HOLE NO. LMI	PAGE NO.
CLAIM NO. 341168	

DRILLING COMPANY	COLLAR ELEVATION	BEARING OF HOLE FROM TRUE NORTH	TOTAL FOOTAGE	DIP OF HOLE AT COLLAR	LOCATION OF HOLE IN RELATION TO A FIXED POINT ON THE CLAIM	MAP REFERENCE NO.
		N 20° W	151'	-55°	460' SOUTH, AND 225' WEST OF NO. 1 POST OF CLAIM NO 341168	
DATE HOLE STARTED	DATE COMPLETED	DATE LOGGED	LOGGED BY		LOCATION (Tp., Lot, Con. OR Lat. and Long.)	
OCT 3/76	OCT. 11/76	OCT 14/76	EMIL CHORZEPA	151 ft -54°	DRILL HOLE CROSSES LABEL - MORRISSETTE TWP. LINE	
EXPLORATION CO., OWNER OR OPTIONEE		DATE SUBMITTED	SUBMITTED BY (Signature)		PROPERTY NAME	
EMIL CHORZEPA		OCT 20/76	EMIL CHORZEPA		CHORZEPA GOLD	

FOOTAGE FROM	TO	ROCK TYPE	DESCRIPTION Colour, grain size, texture, minerals, alteration, etc.	PLANAR FEATURE ANGLE	CORE SPECIMEN FOOTAGE +	YOUR SAMPLE NUMBER	SAMPLE FOOTAGE		SAMPLE LENGTH	ASSAYS +
							FROM	TO		
0	2'	CASING				LMI 3	58	62'	4'	GOLD .01
2	56.5	ANDESITE	GREENISH - FINE GRAINED - CONTAINS NARROW SHEAR ZONE FROM 24.5 TO 26.5' WHICH CONTAINS 5% SULPHIDES (FE), RUST, QUARTZ AND CALCITE. REMAINDER OF SECTION CONTAINS SPARSE SULPHIDES (FE).			LMI 2	95	100'	5'	NIL
56.5	72'	ANDESITE	VERY PALE GREEN - FINE GRAINED - CONTAINS SHEAR ZONE FROM 58-62' CONTAINING ABOUT 7% PYRITE (FE).			LMI 1	116	116	119.5	.002
72	100'	ANDESITE	GREYISH - FINE GRAINED - CONTAINS MANY ROUNDED QUARTZ-CALCITE EYES ABOUT THE SIZE OF PEAS OR SMALLER, SOME MINOR PYRITE (FE) THROUGHOUT THIS SECTION							
100	125	ANDESITE	BRECCIA - BOTH DARK GREEN AND LIGHT GREEN, ALSO SOME GREY FRAGMENTS, AND IRREGULAR SHAPED QUARTZ-CALCITE FRAGMENTS. CONTAINS 2-3% PYRITE (FE) THROUGHOUT.							
125	151	ANDESITE	GREYISH - FINE GRAINED - CONTAINS A FAIR AMOUNT OF QUARTZ-CALCITE STRAINERS (NARROW), ALSO CONTAINS INTERMITTANT PATCHES OF ANDESITIC BRECCIA COMPOSED OF VERY SMALL FRAGMENTS, ABOUT 2-3% VERY MINUTE OR FINE PYRITE (FE) THROUGHOUT.							

* For features such as foliation, bedding, schistosity, measured from the long axis of the core. + Additional credit available. See Assessment Work Regulations.





THE MINING ACT - MINISTRY OF NATURAL RESOURCES
DIAMOND DRILLING LOG

Start a new page for every new hole, but fill in top portion of form only on first page for each hole.

FILL IN ON EVERY PAGE

HOLE NO. PAGE NO.

M-4 420725

DRILLING COMPANY		COLLAR ELEVATION	BEARING OF HOLE FROM TRUE NORTH	TOTAL FOOTAGE	DIP OF HOLE AT COLLAR	LOCATION OF HOLE IN RELATION TO A FIXED POINT ON THE CLAIM	MAP REFERENCE NO.	CLAIM NO.
DATE HOLE STARTED		DATE COMPLETED	DATE LOGGED	LOGGED BY		45' EAST AND 60' NORTH OF NO. 3 POST OF CLAIM NO. 420725	LOCATION (Tp., Lot, Con. OR Lat. and Long.)	
AUG. 1/76		SEPT. 20/76	OCT 14/76	EMIL CHORZEPA	178 ft -57°		MORRISETTE TWP.	
EXPLORATION CO., OWNER OR OPTIONEE		DATE SUBMITTED	SUBMITTED BY (Signature)		ft		PROPERTY NAME	
EMIL CHORZEPA		OCT 20/76	Emil Chorzepe		ft	CHORZEPA GOLD		

FOOTAGE		ROCK TYPE	DESCRIPTION Colour, grain size, texture, minerals, alteration, etc.	PLANAR FEATURE ANGLE*	CORE SPECIMEN FOOTAGE †	YOUR SAMPLE NUMBER	SAMPLE FOOTAGE		SAMPLE LENGTH	ASSAYS †	
FROM	TO						FROM	TO		GOLD	
0	3'	CASING				76-34	164.5	167'	2.5'		.03
3	161.5	ANDESITE	DARK GREEN TO PALE GREEN - MEDIUM GRAINED - FRACTURED AND BROWN OR BLOCKY CONTAINING VEINLETS, STRINGERS AND SEAMS OF QTZ. CALCITE WITH SOME SPARSE SULPHIDES (FE) THROUGHOUT.			76-35	167	172	5'		.02
						76-36	161.5	164.5	3'		.005
						76-37	156.5	161.5	5'		TRACE
						76-38	151.5	156.5	5'		TRACE
						76-39	146.5	151.5	5'		TRACE
61.5	164.5	ANDESITIC ALTERATION ZONE	SHEARED - GREENISH - ABOUT 10° DYPRITE			76-40	140.5	146.5	6'		TRACE
						76-41	135.5	140.5	5'		TRACE
						76-42	80.5	85	4.5'		TRACE
						76-43	90	94.5	4.5'		.03
64.5	178'	QUARTZ PORPHYRY	WHITISH - SOME SHEARING - 5-10° SULPHIDES (FE) THROUGH DRILLED SECTION AS HOLE STOPPED IN THIS FORMATION.			76-44	101	107	6'		TRACE
						76-45	119	124	5'		NIL
						76-46	172	178	6'		.005

* For features such as foliation, bedding, schistosity, measured from the long axis of the core.

† Additional credit available. See Assessment Work Regulations.