



32004SE0123 2.13977 HEARST

010

SAMPLE NO.	LITHOLOGY	ROCK DESCRIPTION	HOLE NO.	FOOTAGE DOWNHOLE
8401	Intrusive	Quartz Diorite	LL-83-7	24.2-24.8 feet
8402	Intrusive	Lamp with garnets	83-10	87-87.5
8403	Intrusive	Lamp siliceous	83-7	36-37
8404	Intrusive	Quartz Monzonite	83-8	140-140.7
8405	Intrusive	Lamp dyke	83-8	129-130.3
8406	Intrusive	Syenite brickred	83-8	252.5-253.5
8407	Intrusive	Lamp dyke	83-9	32-32.8
8408	Intrusive	Lamp dyke	83-6	291-292
8409	Volcanic	grey dacite	83-24	359-360
8410	Volcanic	u/m micro knobbily	83-24	146-146.4
8411	Volcanic	u/m polysutured	83-10	236-236.7
8412	Volcanic	u/m black flows	83-24	180-180.4
8413	Volcanic	u/m polysutured	83-9	362-363
8414	Volcanic	u/m flow to pillow breccia	83-7	285-285.4
8415	Volcanic	u/m polysutured	83-10	346-347
8416	Volcanic	u/m polysutured	83-9	324.5-325.5
8417	Volcaniclastic	u/m conglomerate	83-23	83-84
8418	Volcaniclastic	u/m chert bx	83-8	223-224
8419	Volcaniclastic	u/m conglomerate	83-8	315-316
8420	Volcaniclastic	u/m conglomerate	83-10	108-109
8421	Volcaniclastic	u/m sil breccia	83-8	195-196.5
8422	Volcaniclastic	u/m cong. or flow top	83-7	302-303.5
8423	Sediment	(h) Mud & slst.	LL 83-23	156-157

06-May-91

THUNDERWOOD - WHOLE ROCK ANALYSES 1990

Page: 2

SAMPLE NO.	LITHOLOGY	ROCK DESCRIPTION	HOLE NO.	FOOTAGE DOWNHOLE
8424	Sediments	Graphitic Sediment	LL-83-6	242.3-244.5
8425	Sediments	Chloritic Gritty Siltstone	83-10	39-40
8426	Sediments	Parallel Lam Mdst.	83-24	528.5-530
8427	Sediments	Graphitic Sediment	83-6	110-111
8428	Sediments	Chloritic Sst.	83-7	157.5-158.5
8429	Sediments	Chloritic Sst.	83-11	62.3-63.3
8430	Sediments	Lam Argillite	83-11	306-307.3
8431	Altered Rx	Chertified Sediment?	83-24	442-443.5
8432	Altered Rx	Green Carbonate	83-7	273-274
8433	Altered Rx	Chertified Sediment?	83-6	115.5-116.5
8434	Altered Rx	Green Carbonate	LL-83-6	247-248
8435	Altered Rx	Talrose Schist	TS-80-Ex 2	236-237
8436	Sediment	Grey Chert	TS-80-Ex 2	227-228
8437	Sediment	Arg to Gph Sediment	TS-80-Ex 2	240-242
8438	Sediment	Buff Chert	11-83-6	201-202
8439	Sediment	Turb Sediment	LL-83-23	584.5-585.5
8440	Sediment	Graphitic Sediment	LL-83-8	152.5-153.5



5420 Canotek Road
Ottawa, Ontario
K1J 9G2
(613) 749-2220 Telex 053-4233

LAC MINERALS LTD.
CHRIS PEGG
1100-20 ADELAIDE ST.
TORONTO, ONTARIO

Invoice : 0157699, Page 1

Date : 17-OCT-90

Report No: 090-42765.0

Project : KTHU

Reference:

40 Analyses of DCP WHOLE ROCK	at \$25.00	\$ 1000.00	
Less: 15.0% Contract Discount		\$ 150.00	
Discounted Subtotal		\$ 850.00	\$ 850.00

Alumina (Al ₂ O ₃)	Calcium (CaO)
Total Iron (Fe ₂ O ₃ *)	Potassium (K ₂ O)
Loss on Ignition	Magnesium (MgO)
Manganese (MnO)	Sodium (Na ₂ O)
Phosphorous (P ₂ O ₅)	Silica (SiO ₂)
Titanium (TiO ₂)	Whole Rock Total

40 Analyses of ICP Group 1 - 28 el	at \$ 8.00	\$ 320.00	\$ 320.00
------------------------------------	------------	-----------	-----------

Silver	Aluminum
Arsenic	Barium
Bismuth	Calcium
Cadmium	Cerium
Cobalt	Chromium
Copper	Total Iron
Potassium	Lanthanum
Magnesium	Manganese
Molybdenum	Sodium
Nickel	Lead
Antimony	Tin
Strontium	Tellurium
Vanadium	Tungsten
Yttrium	Zinc

40 Analyses of Gold	at \$ 9.00	\$ 360.00	
Subtotal		\$ 360.00	\$ 360.00
Less: 10.0% Contract Discount		\$ 36.00	\$ 36.00
Discounted Subtotal		\$ 324.00	\$ 324.00

PAID

Continued on next page

*7/05/90
Chris Pegg
for.*

BONDAR-CLEGG & COMPANY I
5420 CANOTEK RD.
GROUCESTER, ONTARIO.

THANK YOU

THIS IS A PROFESSIONAL SERVICE
ACCOUNTS DUE WHEN RENDERED



Bondar-Clegg & Company Ltd
5420 Canotek Road
Ottawa, Ontario
K1J 9G2
(613) 749-2220 Telex 053-3233

LAC MINERALS LTD.
CHRIS PEGG
1100-20 ADELAIDE ST.
TORONTO, ONTARIO

Invoice : 0157699, Page 2

Date : 17-OCT-90

Report No: 090-42765.0
Project : KTHU
Reference:

Sample Preparation			
40 Samples of Crush, Pulverize -200 at \$ 4.00	\$	160.00	
Subtotal	\$	160.00	\$ 160.00
Miscellaneous Charges			
Shipping Charges	\$	16.20	
Subtotal	\$	16.20	\$ 16.20
Invoice Total:			\$ 1670.20 Cdn

PAID

BONDAR-CLEGG & COMPANY LTD.
5420 CANOTEK RD.
GLOUCESTER, ONTARIO
K1J 8X5

THANK YOU

Received Payment in full Nov. 26/90

CK# 028679

*Christine Clarke
Accounts Receivable*

ENDORSE NO. B1514A

CHEQUE NO. 028679

6846



Suite 2105 North Tower
P.O. Box 156
Royal Bank Plaza
Toronto Canada M5J 2J4

LAC Minerals Ltd.

EXPLORATION DIVISION - TORONTO

DATE 22 NOV 90

AC

Y ONE THOUSAND SIX HUNDRED SEVENTY DOLLARS TWENTY CENTS**

*****1,670.20**

BONDAR-CLEGG & COMPANY LTD

5420 CANOTEK ROAD

OTTAWA, ONT

K1J 8X5

LAC Minerals Ltd.
EXPLORATION DIVISION - TORONTO

PER: *[Signature]*
C
C
C
PER: *[Signature]*

CANADIAN IMPERIAL BANK OF COMMERCE
MAIN BRANCH, COMMERCE CT., TORONTO, ONTARIO

⑆00002⑆0101⑆57⑆14915⑆

PLEASE DETACH BEFORE DEPOSITING

B1514A

CHEQUE NO. 028679

22 NOV 90

VOICE NO.	INV DATE	DESCRIPTION	VOUCH NO.	GROSS AMOUNT	DISCOUNT	NET AMOUNT
7699	90/10/17		11126	1,670.20	0.00	1,670.20

TOTAL	1,670.20	0.00	1,670.20
-------	----------	------	----------

90/11/27

Chris,
Did you want a copy of
this cheque for assessment purposes?

N

Bondar-Clegg & Company Ltd.
5400 Hopedale Road
Ottawa, Ontario
K1J 9G2
(613) 749-2220 Telex 053-3233



Geochemical Lab Report

REPORT: 090-42765.0 (COMPLETE)

REFERENCE INFO:

CLIENT: LAC MINERALS LTD.
PROJECT: KTHU

SUBMITTED BY: C. PEGG
DATE PRINTED: 18-OCT-90

ORDER	ELEMENT	NUMBER OF ANALYSES	LOWER DETECTION LIMIT	EXTRACTION	METHOD
1	SiO2 Silica (SiO2)	40	0.01 PCT	Borate Fusion	DC Plasma
2	Al2O3 Alumina (Al2O3)	40	0.01 PCT	Borate Fusion	DC Plasma
3	TiO2 Titanium (TiO2)	40	0.01 PCT	Borate Fusion	DC Plasma
4	Fe2O3* Total Iron (Fe2O3*)	40	0.01 PCT	Borate Fusion	DC Plasma
5	MnO Manganese (MnO)	40	0.01 PCT	Borate Fusion	DC Plasma
6	LOI Loss on Ignition	40	0.05 PCT		Gravimetric
7	MgO Magnesium (MgO)	40	0.01 PCT	Borate Fusion	DC Plasma
8	CaO Calcium (CaO)	40	0.01 PCT	Borate Fusion	DC Plasma
9	Na2O Sodium (Na2O)	40	0.01 PCT	Borate Fusion	DC Plasma
10	K2O Potassium (K2O)	40	0.01 PCT	Borate Fusion	DC Plasma
11	P2O5 Phosphorous (P2O5)	40	0.01 PCT	Borate Fusion	DC Plasma
12	Total Whole Rock Total	40	0.01 PCT		
13	Al Aluminum	40	0.02 PCT	HCL-HNO3, (3:1)	Ind. Coupled Plasma
14	Fe Tot Total Iron	40	0.05 PCT	HCL-HNO3, (3:1)	Ind. Coupled Plasma
15	Mn Manganese	40	50 PPM	HCL-HNO3, (3:1)	Ind. Coupled Plasma
16	Mg Magnesium	40	0.05 PCT	HCL-HNO3, (3:1)	Ind. Coupled Plasma
17	Ca Calcium	40	0.05 PCT	HCL-HNO3, (3:1)	Ind. Coupled Plasma
18	Na Sodium	40	0.05 PCT	HCL-HNO3, (3:1)	Ind. Coupled Plasma
19	K Potassium	40	0.05 PCT	HCL-HNO3, (3:1)	Ind. Coupled Plasma
20	V Vanadium	40	1 PPM	HCL-HNO3, (3:1)	Ind. Coupled Plasma
21	Cr Chromium	40	1 PPM	HCL-HNO3, (3:1)	Ind. Coupled Plasma
22	Co Cobalt	40	1 PPM	HCL-HNO3, (3:1)	Ind. Coupled Plasma
23	Ni Nickel	40	1 PPM	HCL-HNO3, (3:1)	Ind. Coupled Plasma
24	Cu Copper	40	1 PPM	HCL-HNO3, (3:1)	Ind. Coupled Plasma
25	As Arsenic	40	5 PPM	HCL-HNO3, (3:1)	Ind. Coupled Plasma
26	Zn Zinc	40	1 PPM	HCL-HNO3, (3:1)	Ind. Coupled Plasma
27	Sr Strontium	40	1 PPM	HCL-HNO3, (3:1)	Ind. Coupled Plasma
28	Y Yttrium	40	1 PPM	HCL-HNO3, (3:1)	Ind. Coupled Plasma
29	Mo Molybdenum	40	1 PPM	HCL-HNO3, (3:1)	Ind. Coupled Plasma
30	Ag Silver	40	0.2 PPM	HCL-HNO3, (3:1)	Ind. Coupled Plasma
31	Cd Cadmium	40	1 PPM	HCL-HNO3, (3:1)	Ind. Coupled Plasma
32	Sr Strontium	40	20 PPM	HCL-HNO3, (3:1)	Ind. Coupled Plasma
33	Sb Antimony	40	5 PPM	HCL-HNO3, (3:1)	Ind. Coupled Plasma
34	Te Tellurium	40	10 PPM	HCL-HNO3, (3:1)	Ind. Coupled Plasma
35	Ba Barium	40	1 PPM	HCL-HNO3, (3:1)	Ind. Coupled Plasma
36	La Lanthanum	40	1 PPM	HCL-HNO3, (3:1)	Ind. Coupled Plasma
37	Ce Cerium	40	5 PPM	HCL-HNO3, (3:1)	Ind. Coupled Plasma

Bondar-Clegg & Company Ltd.
 5410 Hockley Road
 Ottawa, Ontario
 K1J 9C2
 (613) 749-2220 Telex 053-3213



**Geochemical
 Lab Report**

REPORT: 090-42765.0 (COMPLETE)

REFERENCE INFO:

CLIENT: LAC MINERALS LTD.
 PROJECT: KTHU

SUBMITTED BY: C. PEGG
 DATE PRINTED: 18-OCT-90

ORDER	ELEMENT	NUMBER OF ANALYSES	LOWER DETECTION LIMIT	EXTRACTION	METHOD
38	K Tungsten	40	10 PPM	HCL-HNO3, (3:1)	Ind. Coupled Plasma
39	Pb Lead	40	2 PPM	HCL-HNO3, (3:1)	Ind. Coupled Plasma
40	Bi Bismuth	40	2 PPM	HCL-HNO3, (3:1)	Ind. Coupled Plasma
41	Au Gold	40	5 PPB	AQUA REGIA	FA-AA @ 30 gm weight
42	LOI 1 LOI Pre-ignition wt	40	0.001 GM		
43	LOI 2 LOI Post-ignition wt	50	0.001 GM		

SAMPLE TYPES	NUMBER	SIZE FRACTIONS	NUMBER	SAMPLE PREPARATIONS	NUMBER
DRILL CORE	40	-200	40	Crush,Pulverize -200	40

REMARKS: SAMPLES B410, B421, B432: HIGH CA INTERFERENCE
 ON AG, BA, CE, EA, LA, NB, SR.

REPORT COPIES TO: CHRIS PEGG

INVOICE TO: CHRIS PEGG

Bondar-Clegg & Company Ltd.
5120 Mack Road
Ottawa, Ontario
K1J 9C2
(613) 749-2200 Telex 053-4233

BC
BONDAR-CLEGG

**Geochemical
Lab Report**

DATE PRINTED: 18-OCT-90

REPORT: 090-42765.0

PROJECT: KTHU

PAGE 1A

SAMPLE NUMBER	ELEMENT UNITS	SiO2 PCT	Al2O3 PCT	TiO2 PCT	Fe2O3* PCT	MnO PCT	LOI PCT	MgO PCT	CaO PCT	Na2O PCT	K2O PCT	P2O5 PCT
8401		52.40	17.80	1.04	8.47	0.12	3.71	6.50	1.59	6.19	0.37	0.51
8402		44.40	8.54	0.73	9.05	0.18	6.29	12.60	11.90	1.73	3.41	0.76
8403		64.50	14.00	0.45	3.63	0.05	2.58	1.77	3.25	5.66	3.27	0.12
8404		66.00	10.10	0.24	0.71	0.01	0.75	0.34	0.39	10.30	1.07	0.19
8405		51.70	11.30	0.75	8.64	0.15	3.83	11.10	5.15	2.08	2.94	1.20
8406		63.60	14.50	0.44	4.01	0.06	1.00	3.02	3.49	6.91	1.89	0.47
8407		48.70	9.12	0.63	9.04	0.19	2.53	16.50	7.51	0.88	2.93	0.53
8408		44.00	11.40	0.74	10.40	0.26	6.02	10.60	9.72	2.67	3.21	0.80
8409		59.40	13.60	0.57	5.84	0.11	2.16	4.12	5.33	6.14	2.39	0.21
8410		45.30	7.88	0.44	11.90	0.17	5.22	20.50	7.42	0.13	0.11	0.27
8411		45.30	6.45	0.51	9.99	0.15	6.06	22.80	6.41	0.16	0.07	0.17
8412		46.40	6.29	0.35	11.70	0.10	7.34	24.90	2.18	0.02	0.01	0.14
8413		45.20	6.07	0.32	10.20	0.14	7.57	24.90	5.01	0.05	0.08	0.08
8414		42.40	7.45	0.62	9.92	0.16	9.31	21.70	7.12	0.01	<0.01	0.10
8415		42.20	6.11	0.51	10.30	0.15	8.74	23.60	5.95	0.08	0.07	0.24
8416		44.00	8.95	0.46	11.70	0.20	5.74	19.50	7.36	0.11	0.19	0.17
8417		36.90	7.44	0.39	9.62	0.24	12.14	13.50	16.20	0.90	0.40	0.15
8418		42.50	4.26	0.19	15.40	0.36	13.01	3.32	20.60	0.23	0.44	0.10
8419		45.00	7.51	0.58	10.50	0.17	5.37	21.00	8.65	0.15	0.08	0.10
8420		44.90	7.58	0.60	10.80	0.18	4.72	21.30	7.53	0.26	1.34	0.23
8421		31.30	6.11	0.33	9.21	0.33	20.53	7.84	23.60	<0.01	0.04	0.07
8422		42.50	6.97	0.54	10.40	0.17	7.82	20.60	9.22	0.03	0.06	0.10
8423		47.90	9.14	0.41	10.10	0.18	5.12	16.50	6.31	1.49	0.52	0.10
8424		50.70	8.62	0.32	13.40	0.13	7.37	0.87	12.30	3.68	0.96	0.18
8425		47.70	8.39	0.61	9.76	0.19	3.84	17.30	7.89	1.38	0.28	0.22
8426		59.60	12.70	0.44	3.31	0.06	12.65	1.96	2.67	4.50	1.95	0.12
8427		61.70	15.20	0.79	6.60	0.08	4.81	2.81	1.07	2.58	3.94	0.05
8428		50.90	12.10	0.77	9.52	0.17	2.73	11.50	7.00	3.89	0.68	0.15
8429		48.00	6.63	0.65	10.00	0.19	4.18	17.80	7.91	1.26	0.23	0.14
8430		58.70	17.80	0.67	6.73	0.07	2.81	4.10	1.82	3.12	3.78	0.10
8431		68.30	13.30	0.19	1.42	0.02	2.71	0.56	3.42	6.36	1.86	0.08
8432		27.50	4.71	0.22	5.87	0.46	24.02	4.59	31.60	0.68	0.06	0.07
8433		69.00	12.80	0.20	1.64	0.05	3.03	0.55	4.05	6.49	1.85	0.19
8434		51.90	13.30	0.65	7.63	0.17	6.40	3.35	9.47	2.85	2.98	0.07
8435		37.30	8.22	0.51	9.13	0.23	13.92	15.00	14.70	0.04	0.04	0.12
8436		62.40	13.40	0.58	4.09	0.05	3.94	2.00	3.89	6.83	1.18	0.04
8437		59.20	14.50	0.55	6.14	0.08	4.62	4.83	0.70	4.04	2.89	0.21
8438		66.40	14.70	0.34	2.43	0.03	1.77	0.77	1.91	6.57	3.43	0.03
8439		55.90	14.80	0.65	7.48	0.12	2.85	5.51	4.70	3.57	2.80	0.21
8440		51.80	17.20	0.68	8.33	0.10	4.70	6.78	0.89	4.65	3.53	0.10

Bondar-Clegg & Company Ltd.
500 Dunrobin Road
Ottawa, Ontario
K1J 9G2
(613) 749-2220 Telex 053-3233



Geochemical Lab Report

REPORT: 090-42765.0

DATE PRINTED: 18-OCT-90

PROJECT: KTHU

PAGE 18

SAMPLE NUMBER	ELEMENT UNITS	Total PCT	Al PCT	Fe Tot PCT	Mn PPM	Mg PCT	Ca PCT	Na PCT	K PCT	V PPM	Cr PPM	Co PPM
8401		98.71	3.40	5.49	740	4.17	0.62	<0.05	<0.05	190	53	23
8402		99.59	2.35	3.36	575	3.80	4.72	0.07	1.48	85	565	28
8403		99.28	0.94	2.17	223	0.87	1.87	0.10	0.30	50	128	9
8404		98.11	0.35	0.47	<50	0.16	0.18	0.15	<0.05	14	65	9
8405		98.84	2.74	4.12	517	4.80	1.40	<0.05	<0.05	104	557	37
8406		99.39	0.56	1.29	98	0.44	1.04	0.14	0.09	33	117	8
8407		98.57	3.50	3.66	463	4.95	0.83	<0.05	1.58	79	796	35
8408		99.82	3.57	5.41	1047	4.67	4.46	<0.05	2.04	145	616	34
8409		99.88	0.91	2.14	276	1.06	2.01	0.11	0.47	62	165	15
8410		99.34	3.73	4.72	427	6.23	0.49	<0.05	<0.05	88	1985	70
8411		98.08	3.13	4.67	386	7.18	0.50	<0.05	<0.05	101	649	50
8412		99.43	2.35	3.89	310	4.58	1.29	<0.05	<0.05	93	1640	56
8413		99.61	2.94	4.62	361	7.59	1.20	<0.05	<0.05	111	1301	71
8414		98.79	2.98	3.63	589	5.26	3.21	<0.05	<0.05	111	853	34
8415		97.96	2.90	4.87	568	6.17	2.33	<0.05	<0.05	114	587	39
8416		98.38	4.35	5.19	734	6.99	0.72	<0.05	0.07	90	1614	59
8417		97.88	2.88	4.02	1018	4.28	7.71	<0.05	<0.05	81	1540	53
8418		100.41	1.92	9.08	2216	1.77	>10.00	0.08	0.25	61	690	44
8419		99.11	3.74	4.36	498	7.09	0.84	<0.05	<0.05	104	933	48
8420		99.44	3.61	5.12	561	8.23	0.85	<0.05	0.83	106	810	48
8421		99.35	3.15	5.21	1901	3.93	>10.00	<0.05	<0.05	107	1611	63
8422		98.42	3.56	4.36	581	6.65	2.48	<0.05	<0.05	111	1151	43
8423		97.78	3.28	4.46	565	5.73	1.19	<0.05	0.12	84	1831	62
8424		98.53	0.46	8.42	736	0.33	6.03	<0.05	<0.05	29	159	39
8425		97.55	2.98	3.62	540	5.06	0.61	<0.05	<0.05	72	942	38
8426		99.96	1.34	2.13	319	0.99	1.64	0.06	0.25	38	151	16
8427		99.63	1.87	4.41	493	1.54	0.43	<0.05	0.22	50	185	43
8428		99.41	2.19	3.74	438	3.09	1.04	0.06	<0.05	81	709	39
8429		98.99	3.21	3.80	507	5.44	0.52	0.06	<0.05	75	1055	38
8430		99.71	2.76	4.13	435	2.50	0.58	<0.05	0.23	57	182	28
8431		98.22	0.33	0.97	155	0.29	2.36	0.10	<0.05	15	68	4
8432		99.79	1.72	3.02	2687	1.84	>10.00	<0.05	<0.05	69	1461	65
8433		99.84	0.40	1.13	275	0.25	2.70	0.09	<0.05	16	161	9
8434		98.77	0.68	4.65	695	0.47	5.12	<0.05	0.14	45	406	90
8435		99.21	4.23	4.74	1228	6.30	8.48	<0.05	<0.05	132	1356	64
8436		98.40	0.99	2.51	269	1.10	2.39	0.12	<0.05	65	93	14
8437		97.76	2.37	3.96	445	3.19	0.28	<0.05	0.07	74	171	25
8438		98.38	0.56	1.57	140	0.40	1.22	0.10	0.14	20	104	5
8439		98.58	2.45	3.64	494	2.29	1.49	0.06	0.15	83	378	28
8440		98.76	3.30	5.39	657	4.58	0.33	<0.05	<0.05	124	241	21

Bondar-Clegg & Company Ltd.
 5410 Cork Road
 Ottawa, Ontario
 K1J 9C2
 (613) 749-2220 Telex 053-3233



**Geochemical
 Lab Report**

REPORT: 090-42765.0

DATE PRINTED: 18-OCT-90

PROJECT: KTHU

PAGE 10

SAMPLE NUMBER	ELEMENT UNITS	Ni PPM	Cu PPM	As PPM	Zn PPM	Sr PPM	Y PPM	Mo PPM	Ag PPM	Cd PPM	Sn PPM	Sb PPM
8401		42	49	<5	733	21	12	2	<0.5	1	<20	<5
8402		97	399	<5	52	648	11	2	<0.5	<1	<20	<5
8403		20	25	<5	61	240	6	2	<0.5	<1	<20	<5
8404		13	58	14	85	18	5	2	<0.5	2	<20	<5
8405		156	6	55	348	206	16	2	0.5	<1	<20	<5
8406		25	17	<5	10	143	7	1	<0.5	<1	<20	<5
8407		393	42	<5	57	71	10	<1	<0.5	<1	<20	<5
8408		155	10	<5	160	302	8	1	<0.5	<1	<20	<5
8409		39	69	<5	32	337	11	<1	<0.5	<1	<20	<5
8410		908	78	<5	37	29	4	1	<0.5	<1	<20	<5
8411		507	53	<5	22	69	4	<1	<0.5	<1	<20	<5
8412		807	49	<5	21	63	2	2	<0.5	<1	<20	<5
8413		1007	72	<5	29	63	5	<1	<0.5	<1	<20	<5
8414		386	36	<5	29	143	3	1	<0.5	<1	<20	<5
8415		418	53	<5	19	334	6	1	<0.5	<1	<20	<5
8416		667	60	<5	51	25	10	2	0.6	<1	<20	<5
8417		671	47	<5	37	778	8	3	<0.5	<1	<20	<5
8418		399	122	9	146	332	6	3	<0.5	<1	<20	<5
8419		561	103	<5	41	39	7	2	0.5	<1	<20	<5
8420		569	65	<5	43	77	6	2	0.6	<1	<20	<5
8421		787	48	47	309	353	7	4	<0.5	2	<20	<5
8422		514	55	<5	44	138	5	2	0.7	<1	<20	<5
8423		725	82	<5	47	139	6	1	0.6	<1	<20	<5
8424		160	165	114	175	191	9	21	0.7	1	<20	<5
8425		409	51	<5	67	35	8	<1	<0.5	<1	<20	<5
8426		74	41	<5	45	104	8	2	<0.5	<1	<20	<5
8427		228	116	<5	102	17	7	5	<0.5	<1	<20	<5
8428		258	76	<5	52	48	10	<1	<0.5	<1	<20	<5
8429		431	51	<5	54	21	8	2	<0.5	<1	<20	<5
8430		178	57	<5	79	103	10	4	<0.5	<1	<20	<5
8431		5	25	<5	12	489	2	1	<0.5	<1	<20	<5
8432		948	50	7	73	265	7	2	<0.5	<1	<20	<5
8433		55	35	<5	43	227	3	2	<0.5	<1	<20	<5
8434		754	371	223	4165	112	10	3	0.9	44	<20	<5
8435		612	58	429	1834	108	10	1	<0.5	8	<20	<5
8436		15	18	<5	44	80	6	2	<0.5	<1	<20	<5
8437		102	10	70	416	9	7	6	<0.5	1	<20	<5
8438		9	13	<5	69	171	4	2	<0.5	<1	<20	<5
8439		192	90	<5	75	201	9	2	<0.5	<1	<20	<5
8440		143	14	92	386	13	9	5	0.7	<1	<20	<5

Bondar-Clegg & Company Ltd
542 Brock Road
Ottawa, Ontario
K1J 9K7
(613) 749-2220 Telex 053-3233



Geochemical Lab Report

REPORT: 090-42765.0

DATE PRINTED: 18-OCT-90

PROJECT: KTHU

PAGE 10

SAMPLE NUMBER	ELEMENT UNITS	Te PPM	Ba PPM	La PPM	Ce PPM	W PPM	Pb PPM	Bi PPM	Au PPB	LOI 1 GN	LOI 2 GN
8401		<10	7	14	29	<10	134	<5	14	2.046	1.970
8402		<10	720	21	44	<10	14	<5	71	2.066	1.936
8403		<10	84	42	92	<10	8	<5	6	2.091	2.037
8404		<10	8	6	19	<10	3321	<5	<5	2.007	1.992
8405		<10	23	77	166	<10	128	<5	<5	2.065	1.986
8406		<10	187	43	93	<10	7	<5	<5	2.109	2.088
8407		<10	350	36	80	<10	35	<5	<5	2.015	1.964
8408		<10	838	38	76	<10	6	<5	<5	2.027	1.905
8409		<10	109	29	62	<10	12	<5	<5	2.035	1.991
8410		<10	7	6	9	<10	<2	6	<5	2.049	1.942
8411		<10	27	8	9	<10	<2	<5	<5	2.012	1.890
8412		<10	<5	5	7	<10	<2	<5	<5	2.016	1.868
8413		<10	<5	8	7	<10	<2	<5	<5	2.062	1.906
8414		<10	<5	8	13	<10	<2	<5	<5	2.019	1.831
8415		<10	<5	10	12	<10	8	<5	<5	2.002	1.827
8416		<10	8	7	13	<10	<2	<5	<5	2.056	1.938
8417		<10	12	6	<5	<10	<2	<5	<5	2.010	1.766
8418		<10	319	14	<5	<10	19	9	<5	2.037	1.772
8419		<10	<5	8	18	<10	<2	<5	<5	2.011	1.903
8420		<10	195	9	18	<10	2	<5	<5	2.056	1.959
8421		<10	42	4	<5	<10	123	<5	<5	2.031	1.614
8422		<10	<5	9	19	<10	<2	<5	<5	2.032	1.873
8423		<10	29	15	32	<10	<2	<5	<5	2.049	1.944
8424		<10	14	24	38	<10	51	<5	8	2.012	1.881
8425		<10	20	8	20	<10	9	<5	<5	2.057	1.978
8426		<10	119	26	65	<10	8	<5	<5	2.023	1.767
8427		<10	31	22	48	<10	20	<5	<5	2.015	1.918
8428		<10	10	15	38	<10	<2	<5	<5	2.051	1.995
8429		<10	13	12	27	<10	<2	<5	<5	2.011	1.927
8430		<10	81	35	60	<10	7	<5	5	2.132	2.072
8431		<10	1201	17	43	<10	7	<5	<5	2.032	1.977
8432		<10	12	<1	<5	<10	<2	<5	<5	2.148	1.632
8433		<10	18	25	56	<10	14	<5	<5	2.080	2.017
8434		<10	66	6	13	<10	144	<5	<5	2.064	1.932
8435		<10	<5	13	13	<10	262	<5	<5	2.047	1.762
8436		<10	25	34	78	<10	13	<5	<5	2.083	2.001
8437		<10	34	10	25	<10	289	<5	6	2.012	1.919
8438		<10	100	44	105	<10	10	<5	<5	2.038	2.002
8439		<10	69	26	60	<10	7	<5	<5	2.071	2.012
8440		<10	8	22	46	<10	2142	<5	<5	2.066	1.969

Bondar-Clegg & Company Ltd.
 500 Hurontario Road
 Ottawa, Ontario
 K1J 9G2
 (613) 749-2220 Telex 053 3233



Geochemical
 Lab Report

DATE PRINTED: 18-OCT-90

REPORT: 090-42765.0

PROJECT: KTHU

PAGE 2A

STANDARD NAME	ELEMENT UNITS	SI02 PCT	AL2O3 PCT	TIO2 PCT	Fe2O3* PCT	MnO PCT	LOI PCT	MgO PCT	CaO PCT	Na2O PCT	K2O PCT	P2O5 PCT
PRECIOUS METAL STD		-	-	-	-	-	-	-	-	-	-	-
Number of Analyses		-	-	-	-	-	-	-	-	-	-	-
Mean Value		-	-	-	-	-	-	-	-	-	-	-
Standard Deviation		-	-	-	-	-	-	-	-	-	-	-
Accepted Value		-	-	-	-	-	-	-	-	-	-	-
BCC CHEMICAL BLANK		<0.01	<0.01	<0.01	<0.01	<0.01	-	<0.01	<0.01	<0.01	<0.01	<0.01
BCC CHEMICAL BLANK		<0.01	<0.01	<0.01	<0.01	<0.01	-	<0.01	<0.01	<0.01	<0.01	<0.01
Number of Analyses		2	2	2	2	2	-	2	2	2	2	2
Mean Value		0.005	0.005	0.005	0.005	0.005	-	0.005	0.005	0.005	0.005	0.005
Standard Deviation		0.0000	0.0000	0.0000	0.0000	0.0000	-	0.0000	0.0000	0.0000	0.0000	0.0000
Accepted Value		-	-	-	-	-	-	-	-	-	-	-
Number of Analyses		-	-	-	-	-	-	-	-	-	-	-
Mean Value		-	-	-	-	-	-	-	-	-	-	-
Standard Deviation		-	-	-	-	-	-	-	-	-	-	-
Accepted Value		-	-	-	-	-	-	-	-	-	-	-
CANMET SO-3 REF STD		34.00	5.97	0.34	2.19	0.07	-	8.55	20.60	1.02	1.43	0.15
CANMET SO-3 REF STD		32.70	5.89	0.33	2.17	0.07	-	8.24	20.80	0.99	1.39	0.13
Number of Analyses		2	2	2	2	2	-	2	2	2	2	2
Mean Value		33.350	5.930	0.336	2.180	0.073	-	8.395	20.700	1.005	1.410	0.140
Standard Deviation		0.9191	0.0565	0.0085	0.0142	0.0014	-	0.2192	0.1413	0.0212	0.0283	0.0141
Accepted Value		33.00	5.60	0.30	2.25	0.07	-	8.55	20.00	1.00	1.40	0.20
BCC LOW LOI STD 1986		-	-	-	-	-	2.90	-	-	-	-	-
BCC LOW LOI STD 1986		-	-	-	-	-	3.00	-	-	-	-	-
Number of Analyses		-	-	-	-	-	2	-	-	-	-	-
Mean Value		-	-	-	-	-	2.951	-	-	-	-	-
Standard Deviation		-	-	-	-	-	0.0697	-	-	-	-	-
Accepted Value		-	-	-	-	-	3.08	-	-	-	-	-

Bondar-Clegg & Company Ltd.
 5400 Motek Road
 Ottawa, Ontario
 K1H 9G2
 (613) 749-2220 Telex 053-3233



**Geochemical
 Lab Report**

DATE PRINTED: 18-OCT-90

REPORT: 090-42765.0

PROJECT: KTHU

PAGE 3A

STANDARD NAME	ELEMENT UNITS	SiO2 PCT	Al2O3 PCT	TiO2 PCT	Fe2O3* PCT	MnO PCT	LOI PCT	MgO PCT	CaO PCT	Na2O PCT	K2O PCT	P2O5 PCT
BCC Rock Std 1989		61.00	12.30	0.96	7.02	0.10	4.80	3.60	6.20	1.40	2.24	0.28
BCC Rock Std 1989		59.90	11.90	0.93	7.13	0.11	-	3.48	5.91	1.40	2.22	0.31
Number of Analyses		2	2	2	2	2	1	2	2	2	2	2
Mean Value		60.450	12.100	0.943	7.075	0.105	4.800	3.540	6.055	1.400	2.230	0.295
Standard Deviation		0.7778	0.2828	0.0184	0.0777	0.0014	-	0.0849	0.2051	0.0000	0.0142	0.0212
Accepted Value		60.40	12.10	0.90	6.90	0.09	5.00	3.50	5.90	1.30	2.10	0.19

BCC HI LOI STD 1983		-	-	-	-	-	33.68	-	-	-	-	-
Number of Analyses		-	-	-	-	-	1	-	-	-	-	-
Mean Value		-	-	-	-	-	33.683	-	-	-	-	-
Standard Deviation		-	-	-	-	-	-	-	-	-	-	-
Accepted Value		-	-	-	-	-	34.25	-	-	-	-	-

Bondar-Clegg & Company Ltd.
 5420
 Dick Road
 Ottawa, Ontario
 K1J 9C2
 (613) 749-2220 Telex 051-3233



Geochemical
 Lab Report

DATE PRINTED: 18-OCT-90

REPORT: 090-42765.D

PROJECT: KTHU

PAGE 4A

SAMPLE NUMBER	ELEMENT UNITS	SiO2 FCT	Al2O3 PCT	TiO2 PCT	Fe2O3* PCT	MnO PCT	LOI PCT	MgO PCT	CaO PCT	Na2O PCT	K2O PCT	P2O5 PCT
8401		52.40	17.80	1.04	8.47	0.12	3.71	6.50	1.59	6.19	0.37	0.51
Duplicate		52.90	18.00	1.11	8.37	0.13	3.76	6.41	1.64	6.39	0.38	0.43
8406		63.60	14.50	0.44	4.01	0.06	1.00	3.02	3.49	6.91	1.89	3.47
Duplicate												
8410		45.30	7.88	0.44	11.90	0.17	5.22	20.50	7.42	0.13	0.11	0.27
Duplicate		44.80	7.67	0.42	11.90	0.16	5.17	20.50	7.38	0.12	0.10	0.24
8418		42.50	4.26	0.19	15.40	0.36	13.01	3.32	20.60	0.23	0.44	0.10
Duplicate		42.80	4.14	0.19	14.90	0.34	13.24	3.19	19.90	0.15	0.41	0.07
8424		50.70	8.62	0.32	13.40	0.13	7.37	0.87	12.30	3.68	0.96	0.18
Prep Duplicate		51.00	8.59	0.32	12.80	0.13	7.84	0.81	12.30	3.85	0.99	0.17
8429		48.00	8.63	0.65	10.00	0.19	4.18	17.80	7.91	1.26	0.23	0.14
Duplicate												
8435		37.30	8.22	0.51	9.13	0.23	13.92	15.00	14.70	0.04	0.04	0.12
Duplicate		36.80	8.18	0.50	9.04	0.22	13.97	15.10	14.80	0.03	0.06	0.14
8440		51.80	17.20	0.68	8.33	0.10	4.70	6.78	0.89	4.65	3.53	0.10
Prep Duplicate		52.00	17.40	0.70	8.31	0.11	5.09	6.73	0.91	4.70	3.50	0.14

Bondar-Clegg & Company Ltd.
 512 Huron Road
 Ottawa, Ontario
 K1J 9G2
 (613) 749-2220 Telex 053 3213



**Geochemical
 Lab Report**

REPORT: 090-42765.0

DATE PRINTED: 18-OCT-90

PROJECT: KTHU

PAGE 48

SAMPLE NUMBER	ELEMENT UNITS	Total PCT	Al PCT	Fe Tot PCT	Mn PPM	Mg PCT	Ca PCT	Na PCT	K PCT	V PPM	Cr PPM	Co PPM
8401 Duplicate		98.71	3.40	5.49	740	4.17	0.62	<0.05	<0.05	190	53	23
8406 Duplicate		99.39	0.56	1.29	98	0.44	1.04	0.14	0.09	33	117	8
8410 Duplicate		99.34	3.73	4.72	427	6.23	0.49	<0.05	<0.05	88	1985	70
8418 Duplicate		100.41	1.92	9.08	2216	1.77	>10.00	0.08	0.25	61	690	44
8424 Prep Duplicate		98.53	0.46	8.42	736	0.33	6.03	<0.05	<0.05	29	159	39
8429 Duplicate		98.99	3.21	3.80	507	5.44	0.52	0.06	<0.05	75	1055	38
8435 Duplicate		99.21	4.23	4.74	1228	6.30	8.48	<0.05	<0.05	132	1356	64
8440 Prep Duplicate		98.76	3.30	5.39	657	4.58	0.33	<0.05	<0.05	124	241	21

Bondar-Clegg & Company Ltd.
 5171
 Ottawa, Ontario
 K1J 9K2
 (613) 749-2220 Telex 053-3233



Geochemical
 Lab Report

REPORT: 090-42765.0

DATE PRINTED: 18-OCT-90

PROJECT: KTHU

PAGE 40

SAMPLE NUMBER	ELEMENT UNITS	Ni PPM	Cu PPM	As PPM	Zn PPM	Sr PPM	Y PPM	Hf PPM	Ag PPM	Cd PPM	Sn PPM	Sb PPM
8401 Duplicate		42	49	<5	733	21	12	2	<0.5	1	<20	<5
8406 Duplicate		25	17	<5	10	143	7	1	<0.5	<1	<20	<5
8410 Duplicate		908	78	<5	37	29	4	1	<0.5	<1	<20	<5
8418 Duplicate		399	122	9	146	332	6	3	<0.5	<1	<20	<5
8424 Prep Duplicate		160	165	114	175	191	9	21	0.7	1	<20	<5
8429 Duplicate		431	51	<5	54	21	8	2	<0.5	<1	<20	<5
8435 Duplicate		612	58	429	1834	108	10	1	<0.5	8	<20	<5
8440 Prep Duplicate		143	14	92	386	13	9	5	0.7	<1	<20	<5

Bondar-Clegg & Company Ltd.
 5420 ...
 Ottawa, Ontario
 K1J 9G2
 (613) 749-2220 Telex 053-3233



**Geochemical
 Lab Report**

REPORT: 090-42765.0

DATE PRINTED: 18-OCT-90

PROJECT: KTHU

PAGE 40

SAMPLE NUMBER	ELEMENT UNITS	Te PPM	Ba PPM	La PPM	Ce PPM	W PPM	Pb PPM	Bi PPM	Au PPB	LOI 1 GM	LOI 2 GM
8401		<10	7	14	29	<10	134	<5	14	2.046	1.970
Duplicate										2.046	1.969
8406		<10	187	43	93	<10	7	<5	<5	2.109	2.088
Duplicate									<5		
8410		<10	7	6	9	<10	<2	6	<5	2.049	1.942
Duplicate										2.049	1.943
8418		<10	319	14	<5	<10	19	9	<5	2.037	1.772
Duplicate										2.039	1.769
8424		<10	14	24	38	<10	51	<5	8	2.012	1.881
Prep Duplicate									10	2.038	1.870
8429		<10	13	12	27	<10	<2	<5	<5	2.011	1.927
Duplicate									<5		
8435		<10	<5	13	13	<10	262	<5	<5	2.047	1.762
Duplicate										2.047	1.761
8440		<10	8	22	46	<10	2142	<5	<5	2.066	1.969
Prep Duplicate									<5	2.061	1.965

DOCUMENT No.
 W9108.00095
 2.1397



Report of Work
 (Expenditures, Subsection 77(19))
 Mining Act

Type of Work Performed Whole Rock Analyses Expenditure	Mining Division Larder Lake	Township or Area Hearst Twp
Recorded Holder LAC Minerals Ltd.	Prospector's Licence No. T-664	
Address Ste 1100, 20 Adelaide St E, Toronto, ONT		Telephone No. (416)-367-1031
Work Performed By LAC Minerals Ltd.		
Name and Address of Author (of Submission) Chris Pegg, Box 59, Chaput Hughes, ONT POK 1A0.		Date When Work was Performed From: 15 09 90 To: 18 10 90

All the work was performed on Mining Claim(s): Indicate no. of days performed on each claim. *See Note No. 1 on reverse side				Mining Claim L955116	No. of Days 22	Mining Claim L955125	No. of Days 20	Mining Claim	No. of Days	Mining Claim	No. of Days
Mining Claim L979429	No. of Days 18	Mining Claim L955114	No. of Days 2A	Mining Claim L955115	No. of Days 27.3	Mining Claim	No. of Days	Mining Claim	No. of Days	Mining Claim	No. of Days
Mining Claim	No. of Days	Mining Claim	No. of Days	Mining Claim	No. of Days	Mining Claim	No. of Days	Mining Claim	No. of Days	Mining Claim	No. of Days

Instructions Total days credits may be distributed at claim holder's choice. Enter number of days credits per claim in the expenditure days credit column (below).	Calculation of Expenditure Days Credits			Total Days Credits	Total Number of Mining Claims Covered by this Report of Work
	Total Expenditures \$ 1670.20	÷	15	=	111.3
					4

Mining Claims (List in numerical sequence). If space is insufficient, attach schedules with required information

Mining Claim Prefix	Mining Claim Number	Expend. Days Cr.	Mining Claim Prefix	Mining Claim Number	Expend. Days Cr.	Mining Claim Prefix	Mining Claim Number	Expend. Days Cr.	Mining Claim Prefix	Mining Claim Number	Expend. Days Cr.
L	955115	34.2									
L	955116	27.3									
L	955124	27.3									
L	955125	24.5									
PLEASE NOTE: ALSO USING 2 BANKED DAYS FROM REPORT OF WORK W9008.00747											
RECEIVED											

Total Number of Days Performed 111.3	Total Number of Days Claimed 111.3 + 2 Banked Days	Total Number of Days in the Claim 1991	Future Date 0
--	--	--	-------------------------

Certification of Beneficial Interest *See Note No. 2 on reverse side

I hereby certify that, at the time the work was performed, the claims covered in this report of work were recorded in the current recorded holder's name or held under a beneficial interest by the current recorded holder.

Date: **Feb 27/91**

Recorded Holder or Agent (Signature): *[Signature]*

Certification Verifying Report of Work

I hereby certify that I have a personal and intimate knowledge of the facts set forth in the Report of Work annexed hereto, having performed the work or witnessed same during and/or after its completion and the annexed report is true.

Name and Address of Person Certifying
Chris Pegg, Box 59, Chaput Hughes, ONT POK 1A0.

Telephone No.
(505) 567-3662

Date
Feb 27/91

Certified By (Signature)
[Signature]

For Office Use Only

Total Days Cr. Recorded 113.3	Date Recorded March 1/91	Mining Recorder <i>[Signature]</i>
	Date Approved as Recorded May 28/91	Provincial Manager, Mining Lands <i>[Signature]</i>

Received Stamp

RECEIVED
LARDER LAKE
MINING DIVISION

March 1 1991

TIME 10:30am

BOND GOLD CANADA INC.

20 Adelaide Street East
Suite 1100
Toronto, Ontario M5C 2T6
416 367-1031
416 947-1257 Facsimile



March 01, 1991

2.13977

Mining Lands Section
159 Cedar Street
Sudbury, Ontario
P3E 6A5

RECEIVED

MAR 04 1991

MINING LANDS SECTION

To Whom It May Concern:

Please find enclosed duplicate copies of assay sheets, invoices and cheques to cover a Report of Work recently filed with the Larder Lake Mining Recorder. I have also included a copy of the Report of Work.

If you have any questions regarding this filing, please feel free to contact me.

Yours truly,

Alison Dunlop
Research Geologist

/acd
Encl.

LAC Minerals Ltd.

Exploration Division
20 Adelaide Street, East
Suite 1100
Toronto, Ontario
Canada M5C 2T6

Telephone
(416) 367-1031
Telecopier:
(416) 947-1257



LAC



NO. 10

FACSIMILE COVER SHEET

TO: LARRY STOLICKER

FROM: PAMELA CHILES

SUBJECT: 09108.00095

OF PAGES: 2 (PLUS COVER SHEET)

FACS #: _____

MESSAGE:

Attached is the table of whole-rock sample locations that was inadvertently omitted from the above report of work. As per telephone conversation of this date, you have the diamond drill hole location map for the holes sampled.

Thank you
Pam

DATE: May 6, 1991

OPERATOR: PC TIME: 12:15 AM/PM E.S.T.

* If you did not receive all pages indicated above, please call and the information will be transmitted again.

Note: ^{Some} Drill logs in File 2.13785

May 08/91
LJS

REFERENCES

AREAS WITHDRAWN FROM DISPOSITION

- M.R.O. - MINING RIGHTS ONLY
- O-L-90 - SURFACE RIGHTS ONLY
- M.+S. - MINING AND SURFACE RIGHTS

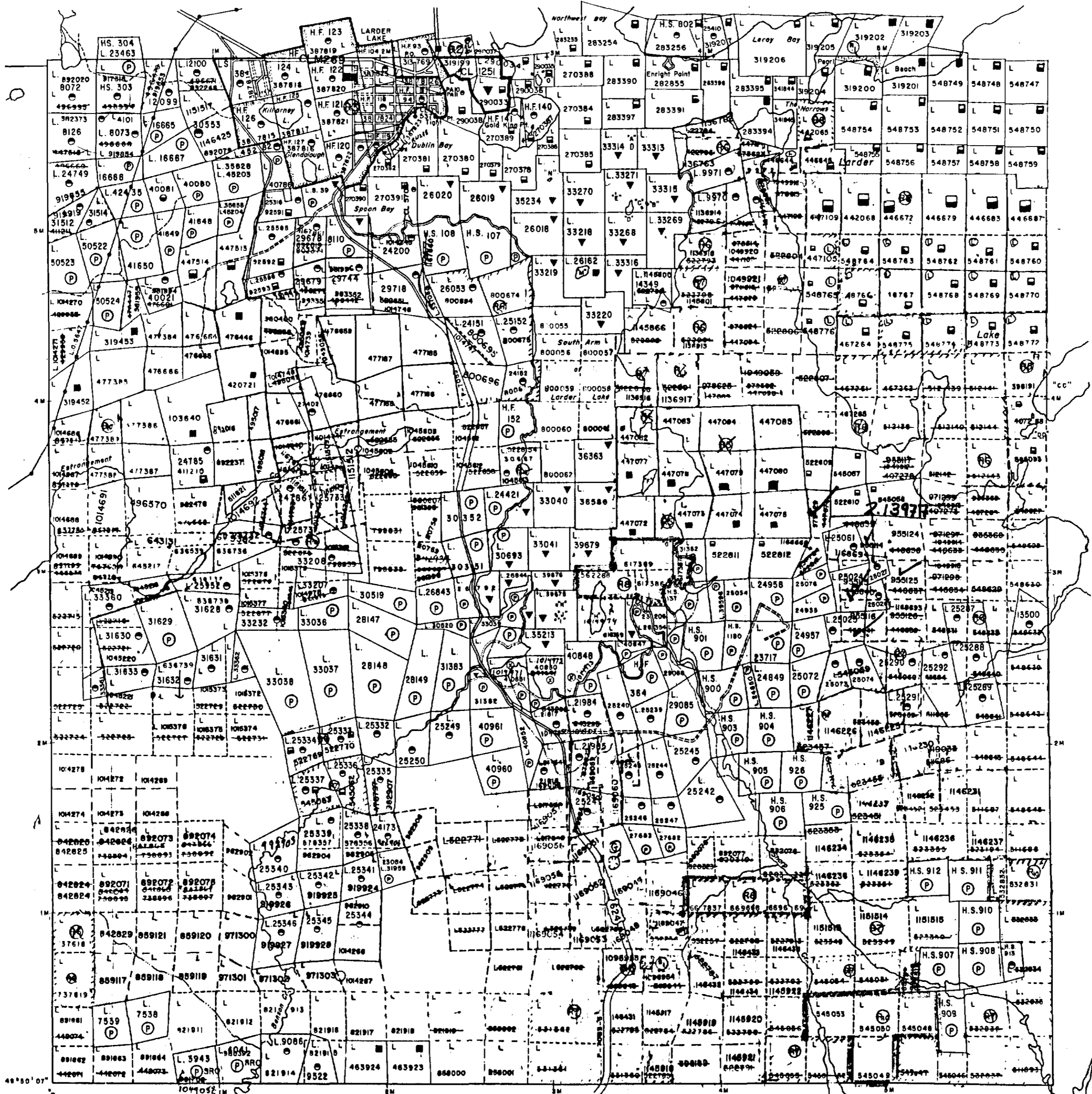
- | Description | Order No. | Date | Disposition | File |
|-------------|-----------|------|---|------|
| R1 | | | SURFACE RIGHTS WITHDRAWN FROM STAKING SECTION 36/80 ORDER NO. W14/80 | |
| R2 | | | SURFACE & MINING RIGHTS WITHDRAWN FROM STAKING SECTION 36/80 ORDER NO. W65/84
O-L-90 NR OPENS W65/84 | |
| R3 | | | MINING RIGHTS WITHDRAWN FROM STAKING SECTION 36/80 ORDER NO. W9/85
O-L-89 OPENS PART OF W9/85 | |
| R4 | | | SURFACE & MINING RIGHTS WITHDRAWN FROM STAKING SECTION 36/80 ORDER NO. W17/85
O-32/85 OPENS W17/85 | |
| R5 | | | SURFACE & MINING RIGHTS WITHDRAWN FROM STAKING SECTION 36/80 ORDER NO. W36/85
O-22/85 OPENS W36/85 | |
| R5 | | | SURFACE & MINING RIGHTS WITHDRAWN FROM STAKING SECTION 36/80 ORDER NO. W38/85
O-L-90 OPENS PART OF W38/85
O-24/85 OPENS PART OF W38/85
O-25/85 OPENS PART OF W38/85
O-26/85 OPENS PART OF W38/85
O-83/87 OPENS PART OF W38/85
O-87/87 OPENS PART OF W38/85
O-L-88 OPENS PART OF W38/85 | |
| R6 | | | SURFACE & MINING RIGHTS WITHDRAWN FROM STAKING SECTION 36/80 ORDER NO. W7/86
O-76/86 OPENS PART OF W7/86
O-80/87 OPENS PART OF W7/86
O-L-10/89 OPENS PART OF W7/86
O-L-14/90 OPENS PART OF W7/86
O-L-8-90 OPENS PART OF W7/86
O-L-10-90 OPENS PART OF W7/86
O-L-13-90 NR OPENS PART OF W7/86 | |
| R7 | | | SURFACE & MINING RIGHTS WITHDRAWN FROM STAKING SECTION 36/80 ORDER NO. W8/86
O-84/87 OPENS PART OF W8/86
O-23/88 OPENS PART OF W8/86
O-L-7-90 OPENS PART OF W8/86
O-L-10-90 NR OPENS PART OF W8/86
O-L-13-90 NR OPENS PART OF W8/86
O-L-13-90 NR OPENS PART OF W8/86 | |
| R8 | | | SURFACE & MINING RIGHTS WITHDRAWN FROM STAKING SECTION 36/80 ORDER NO. W9/86
O-L-7-90 OPENS PART OF W9/86 | |
| R9 | | | SURFACE & MINING RIGHTS WITHDRAWN FROM STAKING SECTION 36/80 ORDER NO. W61/86
O-75/86 OPENS W61/86 | |
| R10 | | | SURFACE & MINING RIGHTS WITHDRAWN FROM STAKING SECTION 36/80 ORDER NO. W50/86
O-8/88 OPENS PART OF W50/86
O-60/87 OPENS PART OF W50/86
O-L-2-90 OPENS PART OF W50/86
O-L-10-90 NR OPENS PART OF W50/86 | |



NOTES

Township of Hearst lies entirely within the CORPORATION of the TOWNSHIP OF LARDER LAKE
STAKING OF MINING CLAIMS WITHIN THE TOWN OF LARDER LAKE SHOWN THUS SUBJECT TO SEC 37(b) OF THE MINING ACT R.S.O. 1970

McVITTIE TWP.



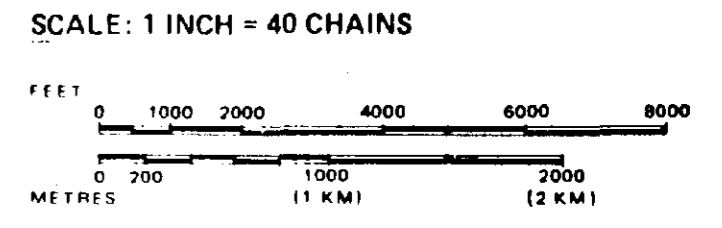
LEGEND

- HIGHWAY AND ROUTE No.
- OTHER ROADS
- TRAILS
- SURVEYED LINES:
 - TOWNSHIPS, BASE LINES, ETC.
 - LOTS, MINING CLAIMS, PARCELS, ETC.
- UNSURVEYED LINES:
 - LOT LINES
 - PARCEL BOUNDARY
 - MINING CLAIMS ETC.
- RAILWAY AND RIGHT OF WAY
- UTILITY LINES
- NON-PERENNIAL STREAM
- FLOODING OR FLOODING RIGHTS
- SUBDIVISION OR COMPOSITE PLAN
- RESERVATIONS
- ORIGINAL SHORELINE
- MARSH OR MUSKEG
- MINES
- TRAVERSE MONUMENT

DISPOSITION OF CROWN LANDS

TYPE OF DOCUMENT	SYMBOL
PATENT, SURFACE & MINING RIGHTS	
" SURFACE RIGHTS ONLY	
" MINING RIGHTS ONLY	
LEASE, SURFACE & MINING RIGHTS	
" SURFACE RIGHTS ONLY	
" MINING RIGHTS ONLY	
LICENCE OF OCCUPATION	
ORDER-IN-COUNCIL	
RESERVATION	
CANCELLED	
SAND & GRAVEL	

NOTE: MINING RIGHTS IN PARCELS PATENTED PRIOR TO MAY 6, 1913, VESTED IN ORIGINAL PATENTEE BY THE PUBLIC LANDS ACT, R.S.O. 1970, CHAP. 380, SEC. 63, SUBSEC. 1.



Replaced on Aug 19, 1987

TOWNSHIP
HEARST
M.N.R. ADMINISTRATIVE DISTRICT
KIRKLAND LAKE
MINING DIVISION
LARDER LAKE
LAND TITLES / REGISTRY DIVISION
TIMISKAMING

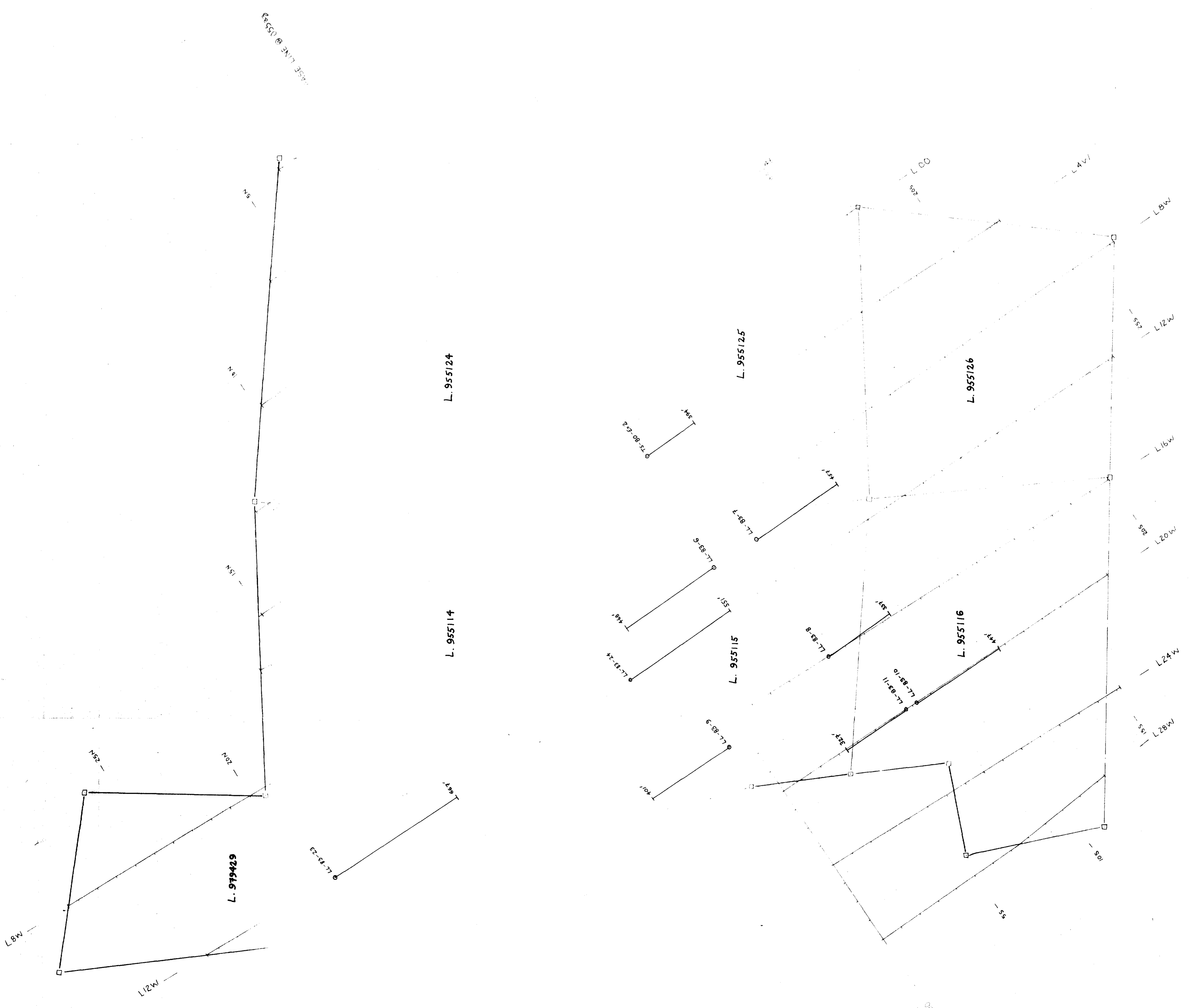
Ministry of Natural Resources
Land Management Branch
Ontario

DATE OF ISSUE
APR 8 1991
LARDER LAKE

Date FEBRUARY, 1985
Number
G-3213

NOTICE OF FORESTRY ACTIVITY
THIS TOWNSHIP / AREA FALLS WITHIN THE
TIMISKAMING MANAGEMENT UNIT

SKEAD TWP.



Best & Precious Metal Analysis - 1990 - Core Samples
 LL-83-8
 TS-80-Ex.2
 LL-83-6

Whole Rock Analysis - 1990 - Core Samples
 LL-83-6
 LL-83-7
 LL-83-8
 LL-83-9
 LL-83-10
 LL-83-11
 LL-83-23
 LL-83-24
 TS-80-Ex.2

2.13977

LAC MINERALS LTD
 Thunderwood Property
 Hearst Township, Ontario

Drill Hole Location Plan
 Kthru 4
 1:2400

DATE: 04/18/90
 DRAWN BY: C. H. H. / J. H. H. / J. H. H.
 CHECKED BY: C. H. H. / J. H. H. / J. H. H.

Scale: 1" = 200'