

DIAMOND DRILLING



32D04SE0200 35 HEARST

010

TOWNSHIP: Hearst

REPORT No.: 35

WORK PERFORMED BY: Corporation Falconbridge Copper

<u>CLAIM No.</u>	<u>HOLE No.</u>	<u>FOOTAGE</u>	<u>DATE</u>	<u>NOTE</u>
L 798832	660-84-03	484	Dec/84	(1)

NOTES: (1) #8-85

Falconbridge Ltd.

CLAIM L-798832

HOLE NO: 660-84-03 PAGE: 1 of 4

Drilled by: BRADLEY BROS. LTD
 Started: DEC. 5, 1984
 Ended: DEC. 7, 1984

Property: CORP. FALCONBRIDGE COPPER
 Township: HEARST, ONT.
 Logged by: MAGLOIRE BERUBE

Latitude: POST 15+00 S.-E Longitude: LINE 5 4700 S.-W
 Azimuth: 318° Dip: -47° at SURFACE { 41° at 200'
 Élévation: SURFACE Length: 484 feet

FROM	TO	A Q core	DESCRIPTION (in feet)	SAMPLE NO.	FROM	TO	LENGTH				
0	13.0	CASING	pull out after using								
13.0	124.2	TUFFS	<p>medium to dark gray, greenish and brownish tinges, massive to faintly aligned 30°-40° with core axis, locally finely bedded 35°. Highly and intimately carbonated (some down to 467.5), not magnetic (even pyrrh. is not magnetic).</p> <p>13.0-32.5: medium grained. Rare traces of pyrrh.</p> <p>32.5-124.2: aphanitic and finely banded to fine-gr. and massive. Massive sections might be altered diorite.</p> <p>Local blebs of pyrrh., pyrrite and few spots of chales.</p> <p>From 108.0, greener, chloritized</p> <p>118.0-119.5: diorite dyke as below but altered, brown texture.</p>								

FROM	TO	DESCRIPTION	SAMPLE NO.	FROM	TO	LENGTH	Au ppb			
124.2	149.2	DIORITE FELDSPAR PORPHYRY <i>relatively fresh (also intimately carbonated) massive, uniform, showing med.-gr. euhedral white feldspar in a fine-gr. greenish gray groundmass Sharp contacts at 45°. Fract. dissem. fg.</i>								
149.2	161.0	TUFFS <i>finely fragmental, greenish gray, faintly banded or bedded at 45°-60° with core axis 17. Dissem. cubic fg.</i>								
161.0	182.3	ALTERATION ZONE <i>slightly to moderately brecciated in situ, fractures filled with quartz stringers (10%) slightly to highly (173.0-175.0) bleached, 1-5% pyrox, fg and rare specks of chalcoc increasing with the degree of bleaching and brecciation. The pseudo-porphyratic texture suggests a diorite feldspar porphy- ry or a med-fragmental tu ff. at origin.</i>	57 58 59 60 61 62	161.0 165.0 168.0 172.0 175.0 177.5	165.0 168.0 172.0 175.0 177.5 182.5	4.0 3.0 4.0 3.0 2.5 5.0	5 16 9 N.D. N.D. N.D.			
182.3	348.0	TUFFS <i>faintly foliated to well bedded (in finer- gr. sections or tops of beds) at 40° with core axis. Intimately carbonated, especially in coarser-gr. sections, not magnetic.</i>								

FROM	TO	DESCRIPTION	SAMPLE NO.	FROM	TO	LENGTH				
		<p>Dark grey with greenish and brownish tinges. Traces of cubic py., mainly in finer-gr. sections at top of beds.</p> <p>182.3-202.0: grading gradually from fine to coarse (1/4"). Fragments aligned 40°</p> <p>202.0-213.5: aphanitic to fine-gr., sheared 40°, chloritized</p> <p>213.5-261.0: med.-gr., white spotted fragments in greenish grey groundmass. Good alignment at 40° with core axis. Getting coarser-gr. down section. Tr. dissem. py.</p> <p>261.0-270.5: grading from fine to med.</p> <p>270.5-348.0: numerous beds grading from fine to medium, bedded 45°, not detailed because 2 boxes (254-302) have certainly been turned over and mixed. Sorting of fragments shows tops up hole.</p>								
348.0	450.0	<p>TUFFS</p> <p>very fine-gr., dark bluish grey with greenish tinge, uniform enough in its whole appearance to show good grain contrast but poor color contrast between beds (at 45°-50°)</p> <p>423.5-437.0: gets gradually coarser, almost med.-gr.</p> <p>Very rare traces of py.</p>								

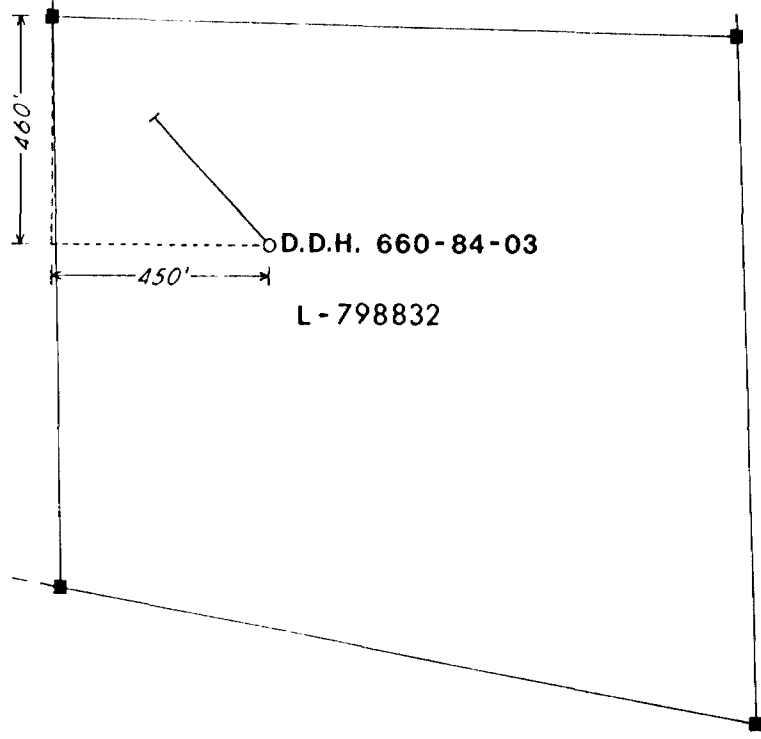
FROM	TO	DESCRIPTION	SAMPLE NO.	FROM	TO	LENGTH				
450.0	467.5	TUFFS (ALTERED DIORITE?) med.-gr., well foliated 45°, finer-gr. near contacts, subhedral white feldspar fragments? Rare traces of py.								
467.5	484.0	TUFFS dark bluish grey, very fine gr. or aphanitic rare traces of py.								
	484.0	END OF HOLE DIP TESTS: 41° at 200' and 37° at 400'								

Maplaine Bénière, Dec. 10/84

Maplaine Bénière
Jan. 4, 1985

L-798831

L-798833

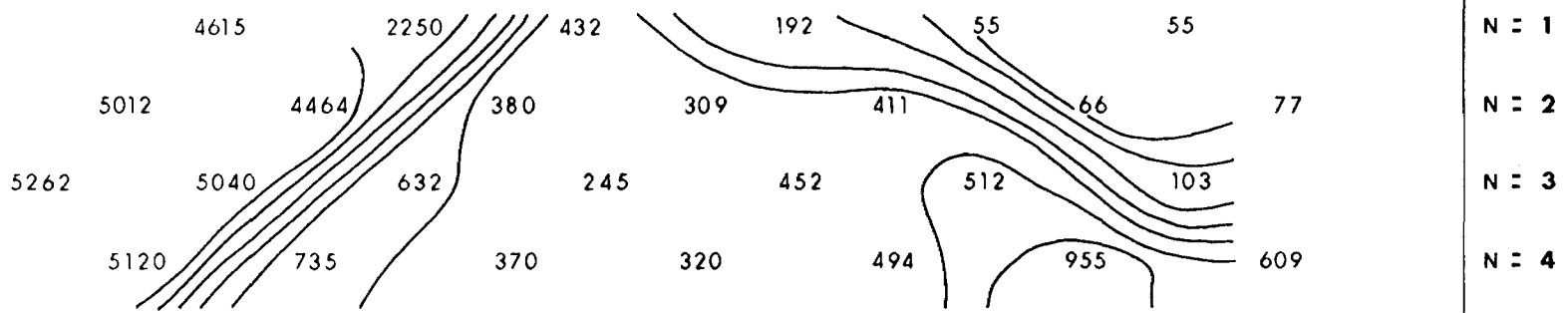


LOCATION PLAN OF DIAMOND DRILL HOLE 660-84-03
ON CLAIM L-798832, HEARST TOWNSHIP ONT.

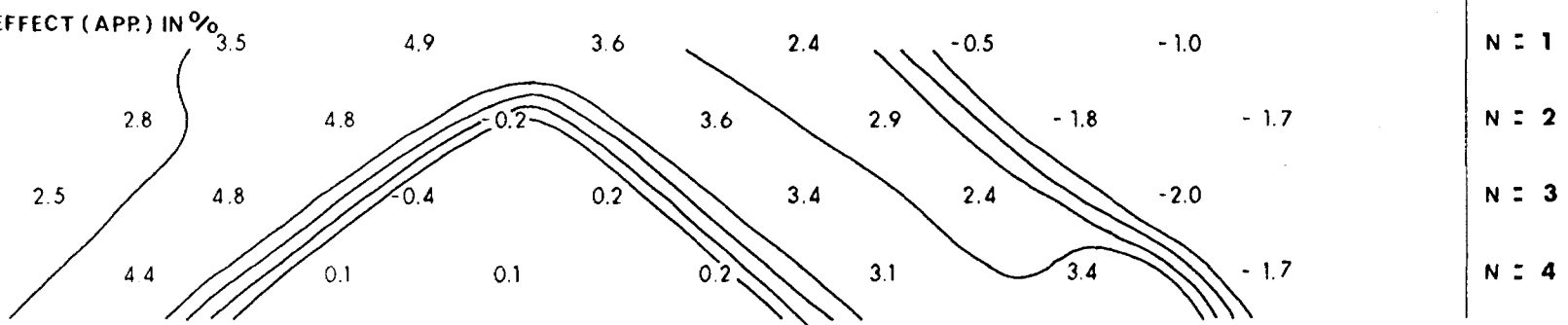
SCALE: 1" = 400'

RESISTIVITY (APP.) IN OHM FEET

INDUCED POLARIZATION



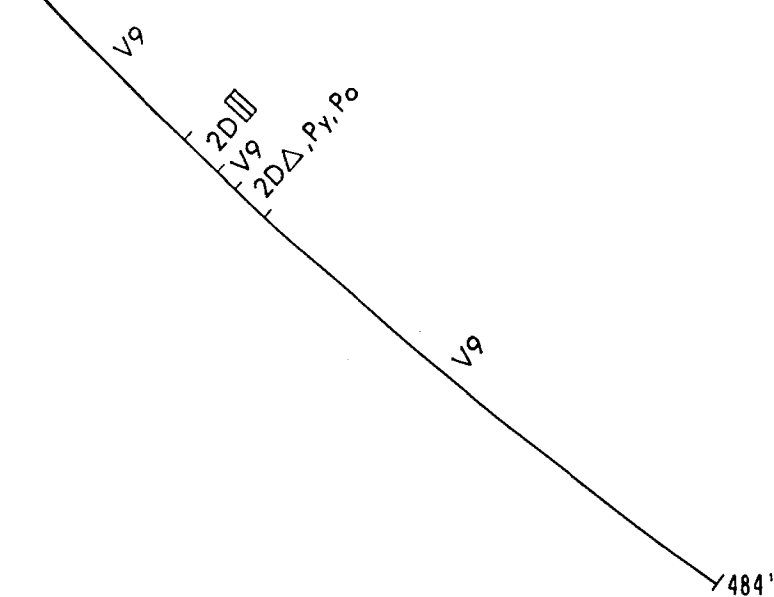
FREQUENCY EFFECT (APP.) IN %



ON LINE 54+00 SW

660-84-03 14 SE 13 SE 12 SE 11 SE 10 SE 9 SE

Overburden



LEGEND

2D DIORITE

V9 TUFF

SUFFIXES

□ PORPHYRY

△ BRECCIATED

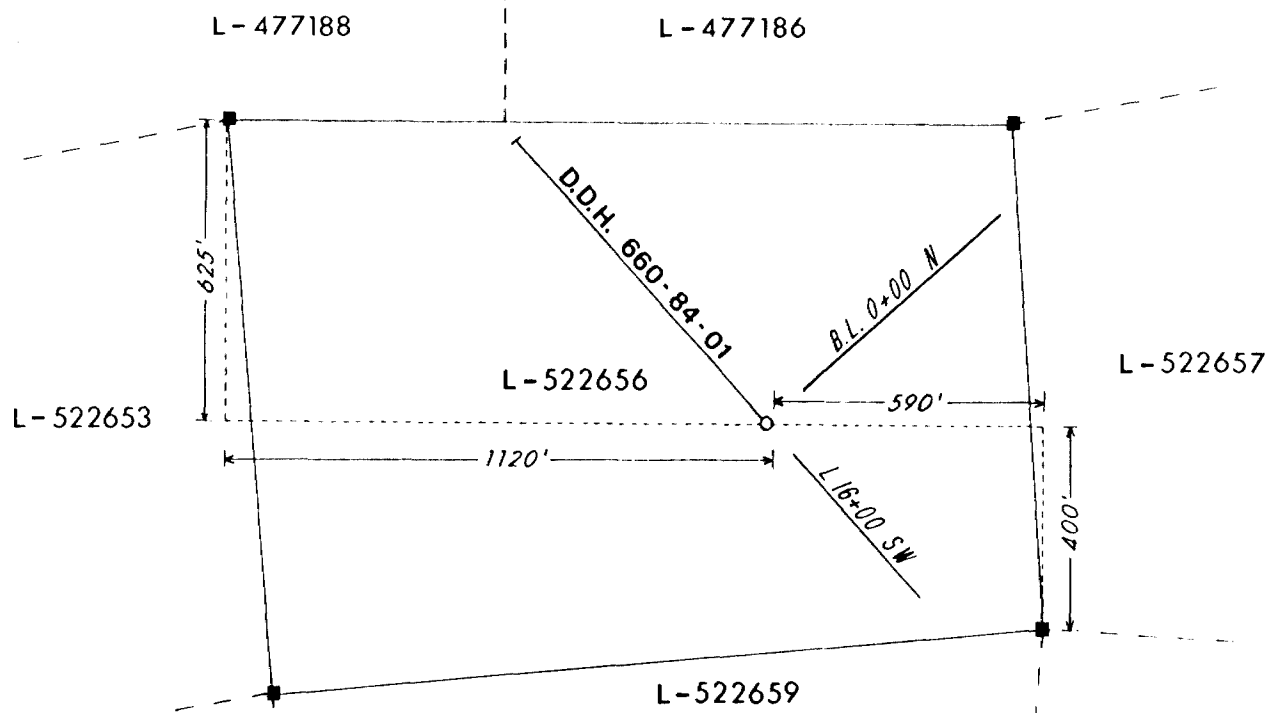
Py PYRITE

Po PYRRHOTITE

CORP. FALCONBRIDGE COPPER

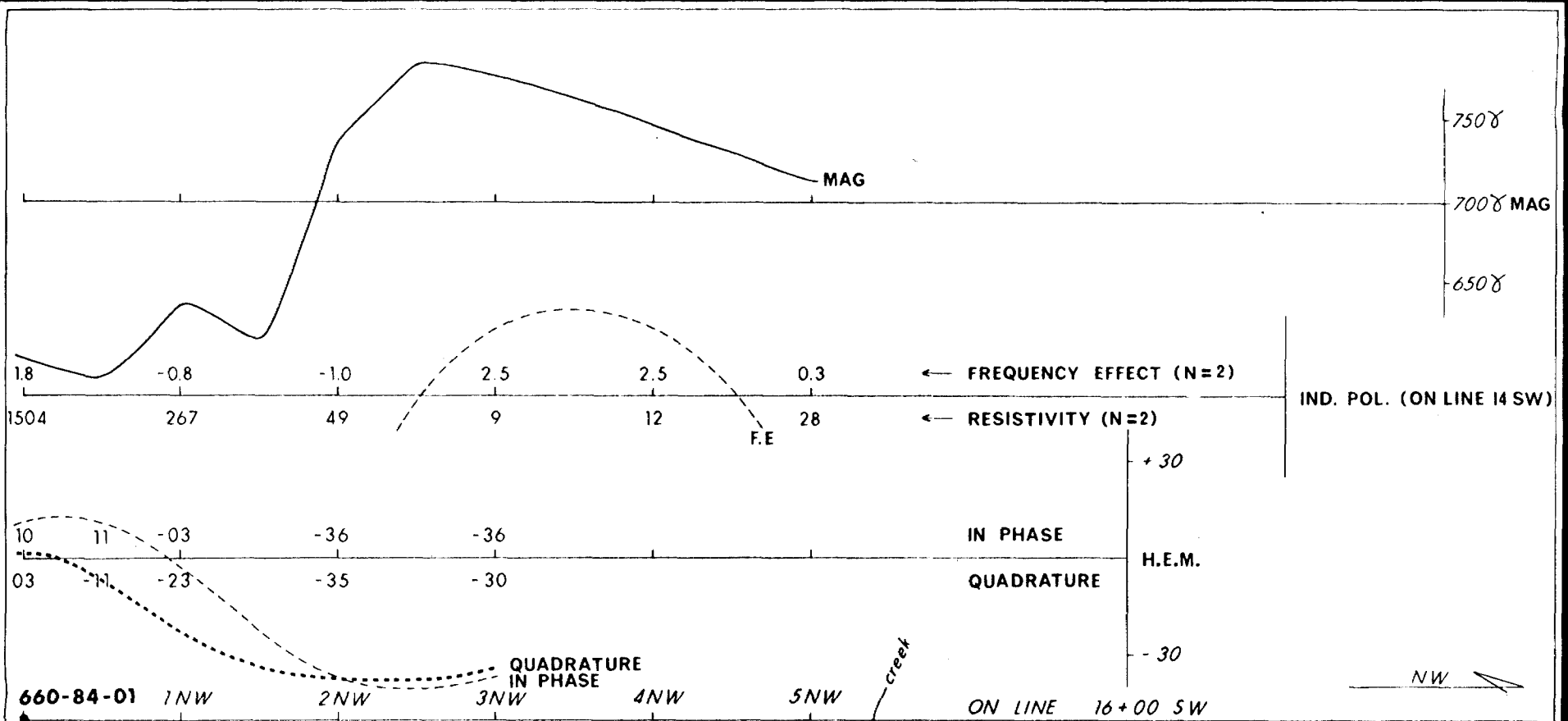
VERTICAL SECTION OF D.D.H. 660-84-03

PROJECT: C.F.L. CLAIMS NO: PN 660
 CLAIM NO: L-798832
 TOWNSHIP: HEARST, ONTARIO NTS: 32 D/4
 LOGGED BY: MAGLOIRE BERUBE DATE: DECEMBER 1984
 TRACED BY: MAGLOIRE BERUBE DATE: DECEMBER 1984
 DRAWN BY: SERVICES EXPLORATION ENRG 13/12/84
 REVISED BY:



LOCATION PLAN OF DIAMOND DRILL HOLE 660-84-01
ON CLAIM L-522656, HEARST TOWNSHIP ONT.

SCALE: 1" = 400'



660-84-01
Overburden

- LEGEND**
- 2D DIORITE
 - V7 BASALT
 - V9 TUFF
 - V10 AGGLOMERATE
 - S1 ARGILLITE
 - S2 GREYWACKE
 - M SCHISTES
- SUFFIXES**
- Gp GRAPHITE
 - i TALCOSE
 - i CARBONATED
 - φ CHLORITIZED
 - △ BRECCIATED

BOUNDARY CORP. FALCONBRIDGE COPPER
BOUNDARY MANY METALS

CORP. FALCONBRIDGE COPPER	
VERTICAL SECTION OF D.D.H. 660-84-01	
PROJECT: C.F.C. CLAIMS	NO: PN 660
CLAIM NO: L-522656	
TOWNSHIP: HEARST, ONTARIO	NTS: 32 D/4
LOGGED BY: MAGLOIRE BERUBE	DATE: DECEMBER 1984
TRACED BY: MAGLOIRE BERUBE	DATE: DECEMBER 1984
DRAWN BY: SERVICES EXPLORATION ENRG.	13/12/84
REVISED BY:	

V7△

V9Gp

V9

S1

F2D

S2

M, i, φ, i

S2

V10

1006'

Name and Postal Address of Recorded Holder

CORPORATION FALCONBRIDGE COPPER

T 556

P.O. BOX 40, COMMERCE COURT WEST, TORONTO, ONT. M5L 1B4

Summary of Work Performance and Distribution of Credits

Total Work Days Cr. claimed	Mining Claim			Work Days Cr.	Mining Claim			Work Days Cr.
	Prefix	Number	Work Days Cr.		Prefix	Number	Work Days Cr.	
1490	L	522638	100	L	522658	100		
For Performance of the following work. (Check one only) <input type="checkbox"/> Manual Work <input type="checkbox"/> Shaft Sinking Drifting or other Lateral Work. <input type="checkbox"/> Compressed Air, other Power driven or mechanical equip. <input type="checkbox"/> Power Stripping <input checked="" type="checkbox"/> Diamond or other Core drilling <input type="checkbox"/> Land Survey		522639	95		522659	100		
		522640	80		522660	100		
		522641	100		522663	100		
		522642	100		522675	60		
		522654	60		522676	100		
		522655	80		798832	20		
		522656	95					

All the work was performed on Mining Claim(s): **L 522656 and L798832**

Required Information eg: type of equipment, Names, Addresses, etc. (See Table Below)

2 DIAMOND DRILL HOLES DRILLED BY: BRADLEY BROS. LIMITED

98-14 RUE

RECORDED JAN 8 1985
REC. No.

ONTARIO GEOLOGICAL SURVEY
RESEARCH OFFICE

D.D.H. 660-84-01

D.D.H. 660-84-03

ON CLAIM L522656

ON CLAIM L798832

FROM NOV. 27 TO DEC. 1, 1984

FROM DEC. 5 TO DEC. 7, 1984

CORE DIAMETER: 1 AQ

CORE DIAMETER: 1 AQ

DIP ANGLE: -47° AT SURFACE

DIP ANGLE: -47° AT SURFACE

LENGTH: 1006 FEET

LENGTH: 484 FEET

PLEASE RETAIN ON CLAIM L798832 (200 DAYS) FOR FURTHER SUBMISSIONS

Date of Report

JAN 4, 1985

Recorded Holder or Agent (Signature)

Attest

Certification Verifying Report of Work

I hereby certify that I have a personal and intimate knowledge of the facts set forth in the Report of Work annexed hereto, having performed the work or witnessed same during and/or after its completion and the annexed report is true.

Name and Postal Address of Person Certifying

MAGLOIRE BERUBE, P. ENG.

Date Certified

JAN. 4, 1985

Certified by (Signature)

Magloire Berube

Table of Information/Attachments Required by the Mining Recorder

Type of Work	Specific Information per type	Other information (Common to 2 or more types)	Attachments
Manual Work	Nil	Names and addresses of men who performed manual work/operated equipment, together with dates and hours of employment.	Work Sketch: these are required to show the location and extent of work in relation to the nearest claim post.
Shaft Sinking, Drifting or other Lateral Work			
Compressed air, other power driven or mechanical equip.	Type of equipment	Names and addresses of owner or operator together with dates when drilling/stripping done.	Work Sketch (as above) in duplicate
Power Stripping	Type of equipment and amount expended. Note: Proof of actual cost must be submitted within 30 days of recording.		
Diamond or other core drilling	Signed core log showing: footage, diameter of core, number and angles of holes.	Nil	Nil
Land Survey	Name and address of Ontario land surveyer.		