

DIAMOND DRILLING



32D04SE0204 34 HEARST

010

TOWNSHIP: Hearst

REPORT No.: 34

WORK PERFORMED BY: Corporation Falconbridge Copper

<u>CLAIM No.</u>	<u>HOLE No.</u>	<u>FOOTAGE</u>	<u>DATE</u>	<u>NOTE</u>
L 522664 798821	660-84-02	428	Dec/84	(1) (2)
L 522662	660-84-04	450	Dec/84	(1)
L 522677	660-84-05	557	Dec/84	(1)
L 522657	660-84-07	538	Dec/84	(1)

1973

NOTES: (1) #7-85
(2) #8-85

CLAIMS L-522664 and L-798831

Drilled by: BRADLEY BROS. LTD
 Started: DECEMBER 2, 1984
 Ended: DECEMBER 4, 1984

Property: CORR. FALCONBRIDGE COPPER
 Township: HEARST, ONT
 Logged by: MAGLOIRE BERUBE, P. ENG.

Latitude: P. 0+60 S.E.
 Azimuth: 318°
 Élévation: SURFACE

Longitude: L-47+00 S.-W
 Dip: -44° at surface
 Length: 488 feet

FROM	TO	AQ core	DESCRIPTION (in feet)	SAMPLE NO.	FROM	TO	LENGTH	Au ppb			
0	19.0	CASING	Removed after using								
19.0	102.5	AGGLOMERATE	Greenish gray, coarsely fragmental, massive, relatively fresh and uniform. Composed of a variety of fragments (whitish to dark green, aphanitic to porphyritic) up to a few inches in diameter, in a greenish, chloritic ground-mass. Not magnetic, only slightly carbonated. No pyrite								
			32.2: 5-10% banded pyrite over 6"	33	31.7	32.7	1.0	23			
			45.0: quartz-carb. stringers, 1/2", 45°, barren	34	44.5	45.5	1.0	37			
			59.2-65.5: diorite dyke, greenish grey, med.-gr. (mottled), uniform, contacts 30° & 45°. Barren								
			66.8-68.0: a fragment? bleached and silicified.	35	66.5	68.0	1.5	37			
			78.0-79.0: quartz-carb. vein, irregular but high angle contacts, barren looking	36	78.0	79.0	1.0	28			

FROM	TO	DESCRIPTION	SAMPLE NO.	FROM	TO	LENGTH	Au ppb			
		125.0-127.5: weak alt., no structure, well mineralized with 5-10% dissemin. pyrrh.	37	125.0	127.5	2.5	18			
		127.5-129.5: wholly med. cubic pyrite, raggy	38	127.5	129.5	2.0	53			
		129.5-132.0: good bleaching, 5% intergranular py.	39	129.5	132.0	2.5	35			
		132.0-137.0: increasing sericitization, buff color, brecciated and fractures filled with black spotted quartz stringers and pyrite bands	40	132.0	134.5	2.5	16			
			41	134.5	137.0	2.5	5			
		137.0-145.0: intense sericitization, widely sheared, pseudo-banding of quartz and pyrite (15%) stringers at rather low angle (10°-30°), frequent fuchsite,	42	137.0	139.0	2.0	40			
			43	139.0	141.0	2.0	32			
			44	141.0	143.0	2.0	37			
			45	143.0	145.0	2.0	18			
		145.0-152.0: decreasing sericitization, coarsely brecciated with interfragmental cement dark grey, slightly graphitic. Still well mineralized: 10% dissemin. pyrrh.	46	145.0	148.0	3.0	28			
			47	148.0	151.0	3.0	21			
		152.0-152.7: 20% quartz stringers in pyritic and graphitic wall rock well bonded at 60°.	48	151.0	154.5	3.5	25			
		152.7-154.5: massive. 1" qtz-carb. stringers.								
		154.5-156.8: 60% vein material alternating with graphitic and pyritic bands at 40°.	49	154.5	157.0	2.5	32			
			50	157.0	159.5	2.5	2			
		156.8-162.5: massive, only ^{weak} little alteration but always containing intergranular pyrrh.	51	159.5	162.5	3.0	7			

FROM	TO	DESCRIPTION	SAMPLE NO.	FROM	TO	LENGTH	Au ppb			
162.5	258.0	SLIGHTLY GRAPHITIC TUFFS light to dark grey, locally black, highly siliceous, generally only slightly graphitic, finely and strongly bedded 30°. No more magnetite nor intimately carbonated. Local pyrite (>1%), bedded or fracture filling, rare pyrrh. 254.3-255.0: dioritic dyke? or grey massive tuff? 5-10% intergranular pyrite.	52	174.4	177.4	3.0	7			
			53	254.1	255.1	1.0	N.D.			
258.0	428.0	GRAPHITIC TUFFS still strongly bedded but beds generally thicker at 40°, dark grey to black. Frequent traces of py., banded or fracture filling. 257.5-258.0: quartz-carb. veinlet, 1/2", 20°, py both sides 272.5-273.5: few low angle, pyritized qtz-carb. str. 330.0-330.5: grey qtz vein, contacts 85°, little py.	54	257.0	258.5	1.5	N.D.			
			55	272.0	274.0	2.0	N.D.			
			56	329.5	331.0	1.5	N.D.			
	428.0	END OF HOLE DIP TESTS (CORRECTED): 200' = 41° ; 400' = 31° SAMPLES ASSAYED AT ASSAYERS LIMITED, ROUYN, QUE.								

M. Beruete
Jan 4, 1985

Maflouire Beruete, P. Eng.

Drilled by: BRADLEY BROS. LIMITED

Property: CORP. FALCONBRIDGE COPPER

Latitude: P. 22+50 N.-W.

Longitude: L-64+00 S.-W.

Started: DEC. 12, 1984

Township: HEARST, ONT.

Azimuth: 290°

Dip: 0°=52°; 200°=52°; 400°=51°

Ended: DEC. 14, 1984

Logged by: MAGLOIRÉ BERUBE, P.ENG.

Élévation: SURFACE

Length: 450'

FROM	TO	DESCRIPTION	SAMPLE NO.	FROM	TO	LENGTH	Av ppb			
0	4.0	CASING <i>left in hole</i>								
4.0	31.0	BASALT <i>dark greenish blue, massive, very uniform, med.-gr., intimately carbonated (HCL) not magnetic. mottled texture Tr-1% coarse cubic py., along fracture or very narrow quartz stringers (1/4"-1/2", 1 dozen)</i>								
31.0	48.5	TRANSITION ZONE <i>very gradual from the basalt above to the alteration zone below. mottling more accentuated. The green color gets gradually lighter, yellowish. Carbonatization disappears. Rare py.</i>								
48.5	52.5	DIORITE DYKE <i>light greenish grey, fine-gr, massive, very uniform, 1/2" low angle quartz stringers along both contacts. 1% finely dissem. cubic py. all along</i>	86	48.5	52.5	4.0	7			

FROM	TO	DESCRIPTION	SAMPLE NO.	FROM	TO	LENGTH	Au ppb			
52.5	115.0	ALTERATION ZONE highly brecciated in situ, silicified and possibly highly dolomitized too. Do not react with HCl. Very uniform, brittle, very hard. Light yellowish green. Texture coarse. About 5% interfragmental grey quartz and white quartz stringers. Fuchsite frequent with or near quartz stringers. Almost no py. Almost no mafic minerals. Systematic sampling at regular intervals	87	60	64	4	5			
			88	72	76	4	N.D.			
			89	84	88	4	N.D.			
			90	96	100	4	N.D.			
			91	108	112	4	41			
115.0	133.0	DIORITE DYKE light bluish grey, fine-gr., massive, very uniform 1% dissemin. cubic py.	92	120	124	4	5			
133.0	392.5	ALTERATION ZONE just like 52.5-115.0. Very uniform in its whole appearance. Does not effervesce with HCl. 5% irregular quartz stringers and filling to which fuchsite is frequently associated. Rare py. 154.5-156.5 : fault breccia, slips at 25°, 20% interfragmental creamy carbonates 171.0-171.6 : quartz-feldspar-chlorite vein, 4", 45° and 30° contacts, tr. py. 265.0-268.0 : diorite dyke, grey, med-gr., barren, contacts 90° and 45°.	93	154.5	156.5	2.0	N.D.			
			94	170.5	172.0	1.5	7			

FROM	TO	DESCRIPTION	SAMPLE NO.	FROM	TO	LENGTH	Au ppb			
		277-283: more white quartz stringers (30%) than normal for the section. No py.	95	277.0	283.0	6.0	N.D.			
		320.0-324.0: diorite dyke, grey, fine-gr.								
		384.7-385.6: bleached, 5% cubic py.	96	384.7	385.7	1.0	7			
		387.8-392.5: bleached light grey, 5-10% dissem. cubic py.	97	387.5	390.0	2.5	N.D.			
			98	390.0	392.5	2.5	28			
392.5	418.0	SYENITE								
		altered, dark bluish grey but showing pink pigmentation and also cut by light to dark pinkish stringers (feldspar?). Locally (5-10%) bleached grey. med.-gr.	99	392.5	397.0	4.5	99			
		First contact gradational, second one, irregular. 1-5% dissem. cubic py., where bleached. This syenite seems responsible for the greater quantity of veins, fuchsite and pyrite in bleached wallrock.		397.0	400.0	3.0				
			100	400.0	404.0	4.0	483			
				404.0	408.0	4.0				
				408.0	411.0	3.0				
			101	411.0	414.0	3.0				
				414.0	418.0	4.0	58			
418.0	450.0	ALTERATION ZONE								
		just like 133-392.5								
		418.0-423.6: 20% white quartz stringers and filling. Apple green because of fuchsite. Py only where blea- ched.	102	418.0	421.0	3.0	35			
			103	421.0	424.0	3.0	11			
	450.0	END OF HOLE								

Maflaire Bernick, P. Eng.

M. Bernick
Jan. 4, 1985

Falconbridge Ltd.

HOLE NO: 660-84-05 PAGE: 1 of 5

CLAIM L 522677

Drilled by: BRADLEY BROTHERS LTD
 Started: DEC. 9, 1984
 Ended: DEC. 11, 1984

Property: CLAIMS CORP. FALL. COPPER
 Township: HEARST, ONT.
 Logged by: MAGLOIRE BERUBE, P. ENG.

Latitude: P. 4+75 S.-E
 Azimuth: 318°
 Élévation: SURFACE

Longitude: L-94+00 S.-W.
 Dip: 55° at 0', 53° at 200', 51° at 400'
 Length: 557 feet

FROM	TO	AQ core	DESCRIPTION (in feet)	SAMPLE NO.	FROM	TO	LENGTH				
0	5.0	CASING	left in place								
5.0	134.0	TUFFS (fine)	<p>dark gray, bluish gray in finer sections (tops of beds) and greenish gray in coarser sections (bottom of beds). Finer sections are also more finely and strongly bedded, at 30° with core axis. Gradation of fragments indicates tops of beds up hole. Intimately carbonated. Not magnetic. Tn Py</p> <p>5.0-21.0: dark bluish gray, grading from very fine to fine.</p> <p>21.0-35.5: greenish gray, massive, med. gr., contacts broken up but finer-gr. on both sides. White spotted, more carbonated, pseudo-dioritic.</p> <p>35.5-134.0: numerous beds grading from fine to med. but most of them very finely fragmental.</p> <p>86.5-94.0: bedding at very low angle with core axis, 107. calcite stringers, 1/4", 45°</p>	63	87.0	92.0	5.0	N.D			

FROM	TO	DESCRIPTION	SAMPLE NO.	FROM	TO	LENGTH	AJ ppb			
134.0	174.0	TUFFS (lapilli) mostly lapilli, well bedded 30° 134.0-141.0: lapilli tuffs, dark grey (graphitic?) and light grey (siliceous) fragments 141.0-166.0: mostly med. 160.0-162.0: brecciated, 5% coarse or banded py associated with carb. stringers. 166.0-174.0: lapilli tuffs, as 134.0-141.0, bedded 40°, 5% py in last 2 feet.								
			64	160.0	162.0	2.0	N.D.			
			65	172.0	174.0	2.0	N.D.			
174.0	267.0	TUFFS (slightly graphitic) dark grey to blackish, very finely fragmental, locally med., finely bedded 40°-45°. Rarely affect the ohmmeter needle. 17% Py 204.2-205.5: diorite?, mottled green, 5% py., slightly magnetic because of pyrh., contacts 80° across bedding 214.5: quartz-garnet stringers, 75°, 1/2" 227.3: quartz-garnet-py stringers, 1", 60° 243.3-245.3: cherty, dirty grey 247.2-249.4: also cherty, locally showing agate-like designs plus calcite- pyrh.-py. currents								
			66	204.0	205.7	1.7	N.D.			
			67	243.0	245.5	2.5	N.D.			
			68	247.0	249.5	2.5	N.D.			

FROM	TO	DESCRIPTION	SAMPLE NO.	FROM	TO	LENGTH	Av ppb			
267.0	381.5	TUFFS (med.) grey, med.-fragm., massive, uniform, intimately carbonated, not magnetic, mottled texture made up of whitish (sili- cous) and blackish (graphitic?) fragments. Locally finely foliated as 267-286, 355-359, 365.5-367.5. Tr. Py Frequent quartz-calcite currents, especially from 334 to 356 (5-10% currents) where somewhat brecciated.	69	342.0	347.0	5.0	N.D.			
381.5	535.0	TUFFS (graphitic) dark grey to black, finely granular, very finely bedded 0°-90°, calcite filling hairline fractures only, folding indicated by changes in bedding, Locally cut by a few dykes, grey, highly and intimately carbonated diorite dykes. 1-2% Py all along, mostly fracture filling, occa- sionnaly nodular, bedded or patchy. 381.5-392.0: highly graphitic, bed. 0°-35°, 1% py. 392.0-395.7: grey, not graphitic, bed. 25°, 393-394: few qtz-jay. stringers (15%) 395.7-404.2: highly graphitic, 30°, 1% py. 404.2-407.0: diorite dyke, sharp contacts 50° and 65° cross-cutting bedding, med. gr. greenish grey, massive, 3% coarse gr. py.	70	393.0	394.0	1.0	62			
			71	404.0	407.0	3.0	30			

FROM	TO	DESCRIPTION	SAMPLE NO.	FROM	TO	LENGTH	Au ppb			
		407.0-535.0: <i>Block, graphite</i>								
		407-419: <i>bedding $\pm 30^\circ$</i>								
		419-426.5: <i>bedding $\pm 80^\circ$</i>								
		423.5-425.5: <i>more carb. and fujite</i>	72	423.5	425.5	2.0	N.D.			
		426.5-429: <i>bedding $0^\circ-30^\circ$</i>								
		429-444: <i>bedding $45^\circ-60^\circ$</i>								
		442.0-444.0: <i>qtz-carb.-fuj. stringers 0.5%</i>	73	442.0	444.0	2.0	16			
		444-456: <i>bedding $\pm 30^\circ$</i>								
		456.0-479.7: <i>bedding $10^\circ-20^\circ$</i>								
		462.5-463.5: <i>gray diorite dyke, contacts 60°, 10% dissem. fuj.</i>	74	462.5	463.5	1.0	N.D.			
		479.7-481.2: <i>gray diorite dyke, contacts 75°, 5-10% dissem. fuj. (coarse)</i>	75	479.5	481.5	2.0	N.D.			
		481.2-535.0: <i>bedding $45^\circ-60^\circ$, 2% nodules and banded fuj.</i>								
		497.0-498.0: <i>diorite dyke?, gray, 5% dissem. fuj. (coarse)</i>	76	497.0	498.0	1.0	N.D.			
		523.3-525.8: <i>gray diorite dyke, contacts 45°, 10% dissem. cubic fuj. 1" low angle quartz stringer in center.</i>	77	523.0	526.0	3.0	N.D.			
		528.0-530.5: <i>hybrid, mixture of diorite, qtz strg., carb and 3% fuj.</i>	78	528.0	530.5	2.5	N.D.			
		532.2-533.5: <i>gray diorite, contacts 50°, 5-10% coarse cubic fuj.</i>	79	532.0	533.5	1.5	N.D.			

FROM	TO	DESCRIPTION	SAMPLE NO.	FROM	TO	LENGTH	Av ppb			
535.0	550.0	DIORITE DYKE grey, massive to faintly foliated 45°, med.-gr. 1-10% Py, mainly along qtz-carb. stringers and closed to contacts.	80	536.0	538.0	2.0	N.D.			
			81	547.0	550.0	3.0	930			
550.0	557.0	TUFFS (graphitic) black, bedded 30° 1% coarse cubic py.								
	557.0	END OF HOLE								

Magloire Bernické, P. Eng.

*M. Bernické
Jan. 4, 1985*

CLAIM L 522657

Drilled by: BRADLEY BROS. LIMITED

Property: CORP. FALCONBRIDGE COPPER

Latitude: P. 2+00 S.-E.

Longitude: L-6+00 S.-W.

Started: DEC. 12, 1984

Township: HEARST, ONT.

Azimuth: 138°

Dip: 0' = 47°; 200' = 42°; 400' = 34°

Ended: DEC. 14, 1984

Logged by: MAGLOIRE BERUBE, P. ENG.

Élévation: SURFACE

Length: 538 feet

FROM	TO	DESCRIPTION	SAMPLE NO.	FROM	TO	LENGTH	Au ppb			
0	50.0	CASING <i>pull out</i>								
50.0	57.0	BRECCIATED ANDESITE <i>coarse andesitic fragments broken in situ, black graphitic interfragmental filling.</i>								
57.0	63.5	DIORITE DYKE <i>light greenish grey, massive, uniform, contacts 40° no fygite</i>								
63.5	115.0	BRECCIATED ANDESITE <i>light green andesitic fragments broken in situ and healed by a light to dark grey, very slightly graphitic groundmass Tr - 1% fyg, mainly in beginning of section 75.7-77.4: diorite dykes as above, contacts 65-75° 78.0-80.0: " " " " " "</i>	104	64.0	68.0	4.0	7			
115.0	129.5	DIORITE DYKE <i>similar to 57-63.5, varying from white spotted to mottled. Contacts 60° & 75° No fyg. except along fractures from 118 to 119</i>								

FROM	TO	DESCRIPTION	SAMPLE NO.	FROM	TO	LENGTH	Au ppb			
129.5	165.0	BRECCIATED ANDESITE like 63.5-115.0. No py. except 3% from 150 to 160	105 106	150 155	155 160	5.0 5.0	14 12			
165.0	171.5	DIORITE massive, gray, fine-gr., uniform no py. except 3% cubic py. diss. along fractures from 169 to 170	107	169	170	1.0	28			
171.5	305.3	BASALT greenish gray, med.-gr., white spotted, massive, uniform, mainly composed of feldspar and hornblende-chlorite. Local traces of py., rare pyrox. 171.5-201: lighter, white spotted 201-237: more uniformly greenish gray, no more white spotted 221.5-223: porous, rotten, rusty (water circulation) 237-272.5: white spotted again but darker green 272.5-305.3: some brecciation in situ and silicification. White spotted, lighter greenish gray. 274-276: 10% irregular strips of milky py.	108	274	276	2.0	16			
305.3	346.3	AGGLOMERATE light gray, aphanitic to very fine-gr., merron, siliceous fragments in bluish siliceous matrix.								

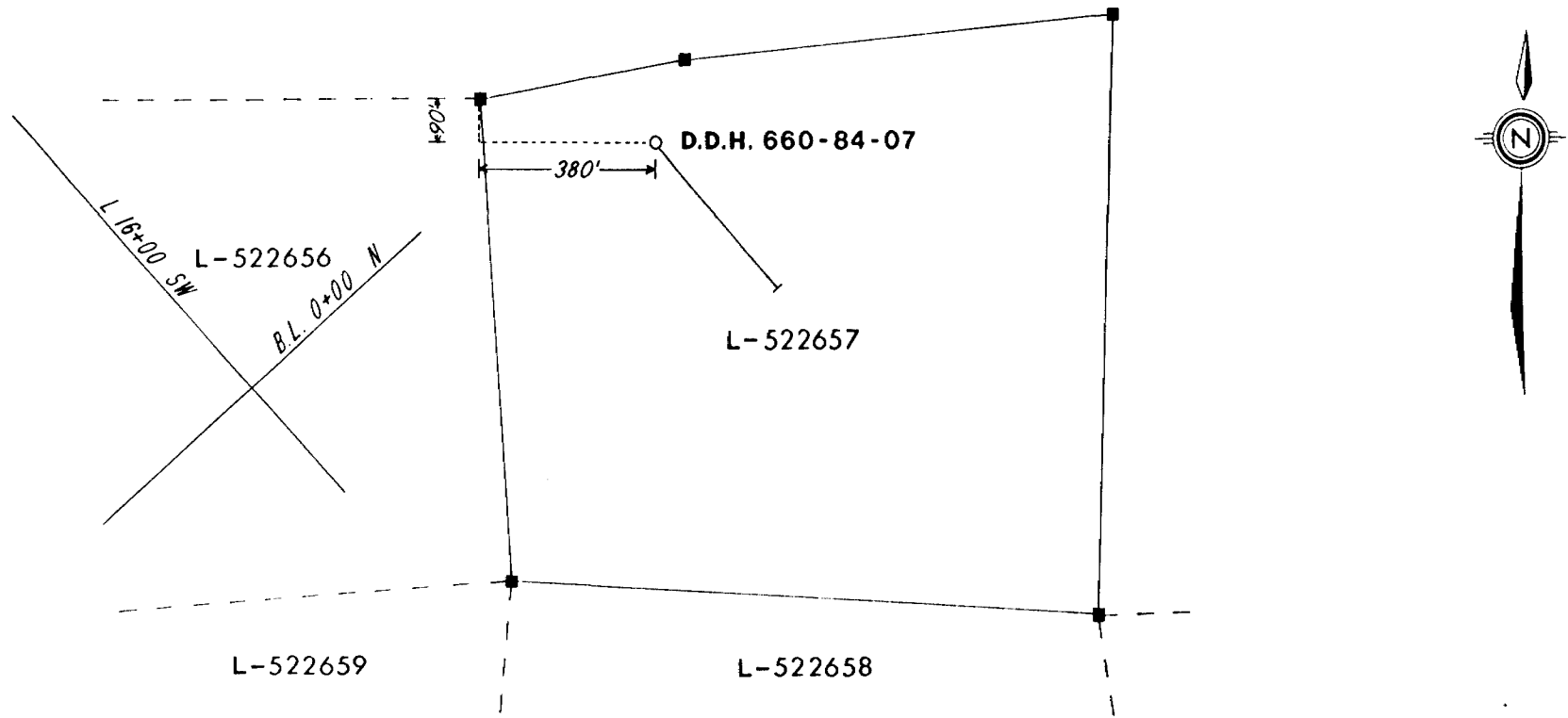
FROM	TO	DESCRIPTION	SAMPLE NO.	FROM	TO	LENGTH	Au ppb			
		<i>Good alignment of small fragments at 35°-40° with core axis. Traces cubic fgy. all along, 1-2% in last 2 feet</i>	109	344	346	2.0	7			
346.5	350.3	DIORITE <i>bluish grey, fine-gr., massive, uniform, contacts 60° & 45° to fgy.</i>								
350.3	369.0	HYBRID ZONE <i>weak to moderate maroon alteration (sericite?) 3% dissem. cubic fgy.</i>								
		<i>350.3-352.6 : agglomerate as above, maroon</i>	110	350.0	352.5	2.5	12			
		<i>352.6-355.0 : cherty, very light grey, maroon tinge</i>	111	352.5	355.0	2.5	18			
		<i>355.0-363.5 : altered diorite or med. gr. tuff, pseudo-fm phyllitic, massive</i>								
		<i>363.5-369.0 : cherty to aphanitic</i>								
		<i>366.5-368 : banded and nodular fgy.</i>	112	366.5	368.0	1.5	58			
369.0	392.0	GRAPHITIC TUFFS <i>dark grey to black, bedded 30°-60°, finely fragmental to lapillitic. 3-5% fine to coarse cubic pyrite all along 375-377 : plus nodular pyrite</i>								
			113	375	377	2.0	37			
			114	377	380	3.0	26			

FROM	TO	DESCRIPTION	SAMPLE NO.	FROM	TO	LENGTH	Au ppb	Ag ppm	Zn ppm	Cu ppm	Pb ppm
392.0	414.0	HYBRID ZONE silicified, mixture of altered diorite and tuffs variable. Tr. 2% cubic fpyrite 392.0-396.0: diorite, weakly schistose 45° 396.0-397.6: graphitic tuff or breccia 397.6-400.0: silicified diorite, bluish to greenish with white to blue quartz. Juchaita around 399 400.0-411.4: altered diorite 411.4-414.0: gray tuff 413-414: lapillitic	115	397.5	400.0	2.5	23				
414.0	445.0	CHERT massive, aphanitic, local good bedding 30-45° irregularly impregnated by 10% white milky qtz. 3-5% cubic fpyrite, often in aggregates. Traces to 3% sphalerite from 426 to 432 431.7-436.7: diorite dyke, 5-10% finely dissem. cu. fpy. 436.7-445.0: brecciated, 40% interfragmental quartz, 5-10% fpy in chert, not in qtz	117 118 119 120 121 122 123 124	414.0 418.0 422.0 426.0 429.0 432.0 437.0 441.0 445.0	418.0 422.0 426.0 429.0 432.0 437.0 441.0 445.0	4.0 4.0 4.0 3.0 3.0 5.0 4.0 4.0	41 23 28 32 37 51 35 51	1.4 0.2 0.5 0.1 0.2	230 1700 250 150 850	240 230 150 360 700	26 31 20 38 42
445.0	534.5	ULTRAMAFIC LAVAS very dark bluish to greenish gray, variable, med.-gr., more or less schistose 0°-45° with core axis, locally cut by diorite dykes 445-451: chloritic, low angle schistosity. tr. fpy.									

FROM	TO	DESCRIPTION	SAMPLE NO.	FROM	TO	LENGTH				
		451-476.3 : intermediate angle schistosity, No py. 476.3-496.0 : diorite, fine-gr., dark brownish grey, altered, contacts 45°, massive to foliated 45°, tr. py. 484.3-486.0 : inclusion of talc-chlorite schists, 40° 496.0-518.0 : talc-chlorite schists, banded white and dark blue 486-497 : lot of mud seams 508.5-518.8 : altered diorite 518.0-534.5 : talc chlorite schists								
534.5	536.5	GRAPHIC TUFFS								
536.5	538.0	BASALT, massive, white spotted								
	538.0	END OF HOLE								

M. Berube, P. Eng.

M. Berube
Jan. 4, 1985



LOCATION PLAN OF DIAMOND DRILL HOLE 660-84-07
ON CLAIM L-522657, HEARST TOWNSHIP ONT.

SCALE: 1" = 400'

DRILLED ON I.P. INTERPRETATION
SEE PSEUDO SECTION

ON LINE 6+00 SW

660-84-07 3 SE

4 SE

5 SE

6 SE

AZIMUTH 138°

LEGEND

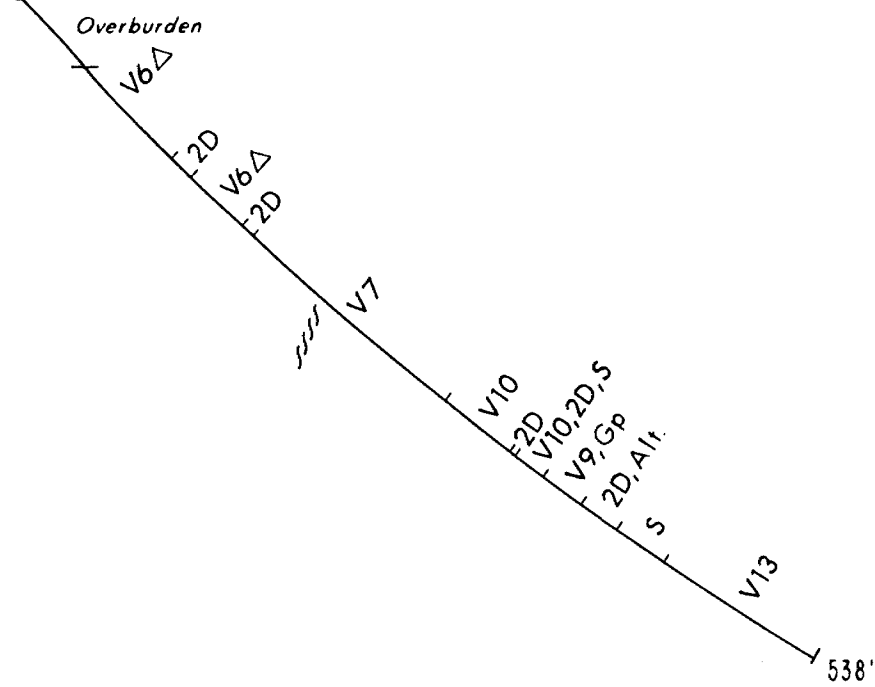
- 2D DIORITE
- V6 ANDESITE
- V7 BASALT
- V9 TUFF
- V10 AGGLOMERATE
- V13 ULTRAMAFIC LAVAS
- S CHERT

SUFFIXES

- Gp GRAPHITE
- Alt ALTERATION ZONE
- △ BRECCIATED

SYMBOLS

- / / FAULT

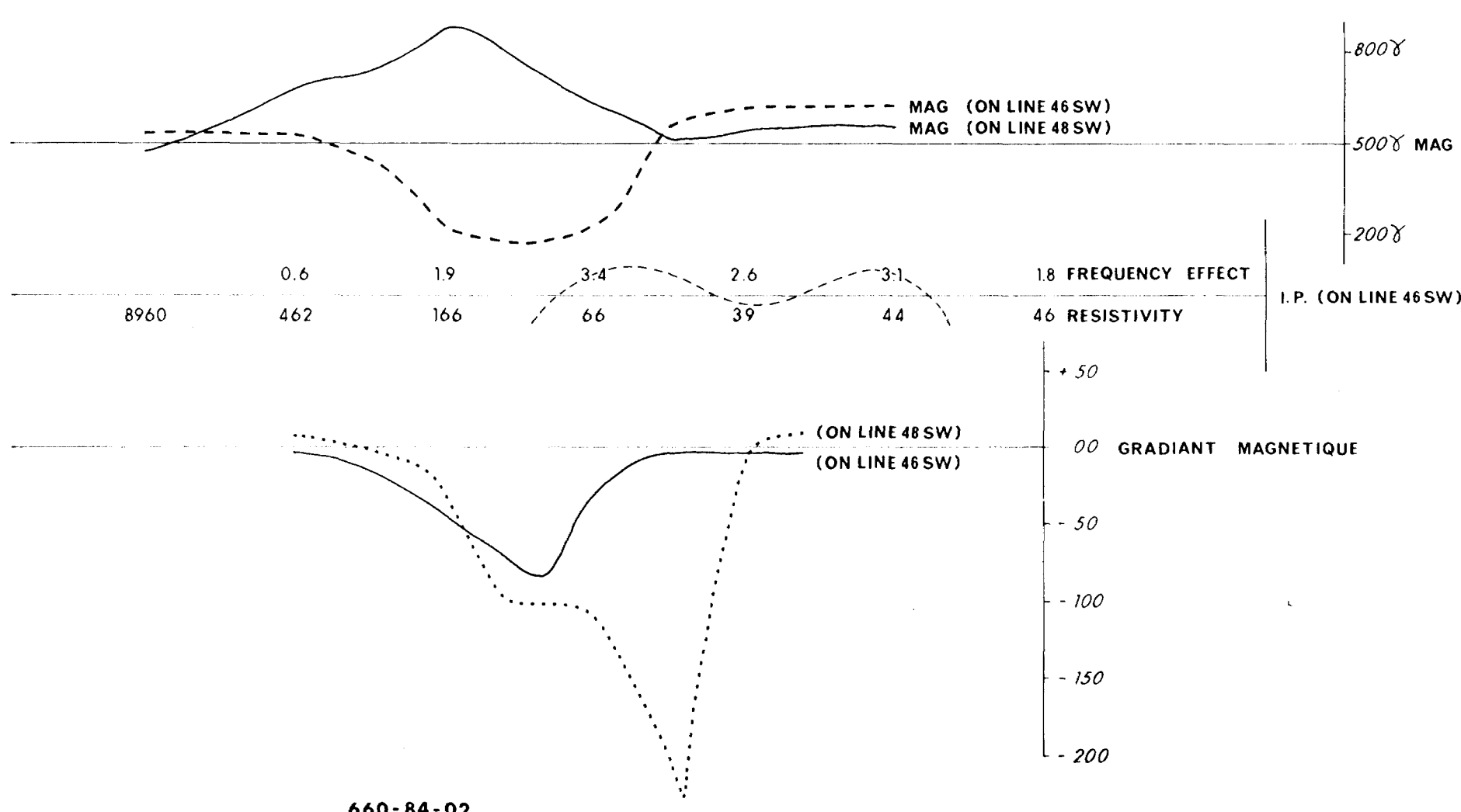
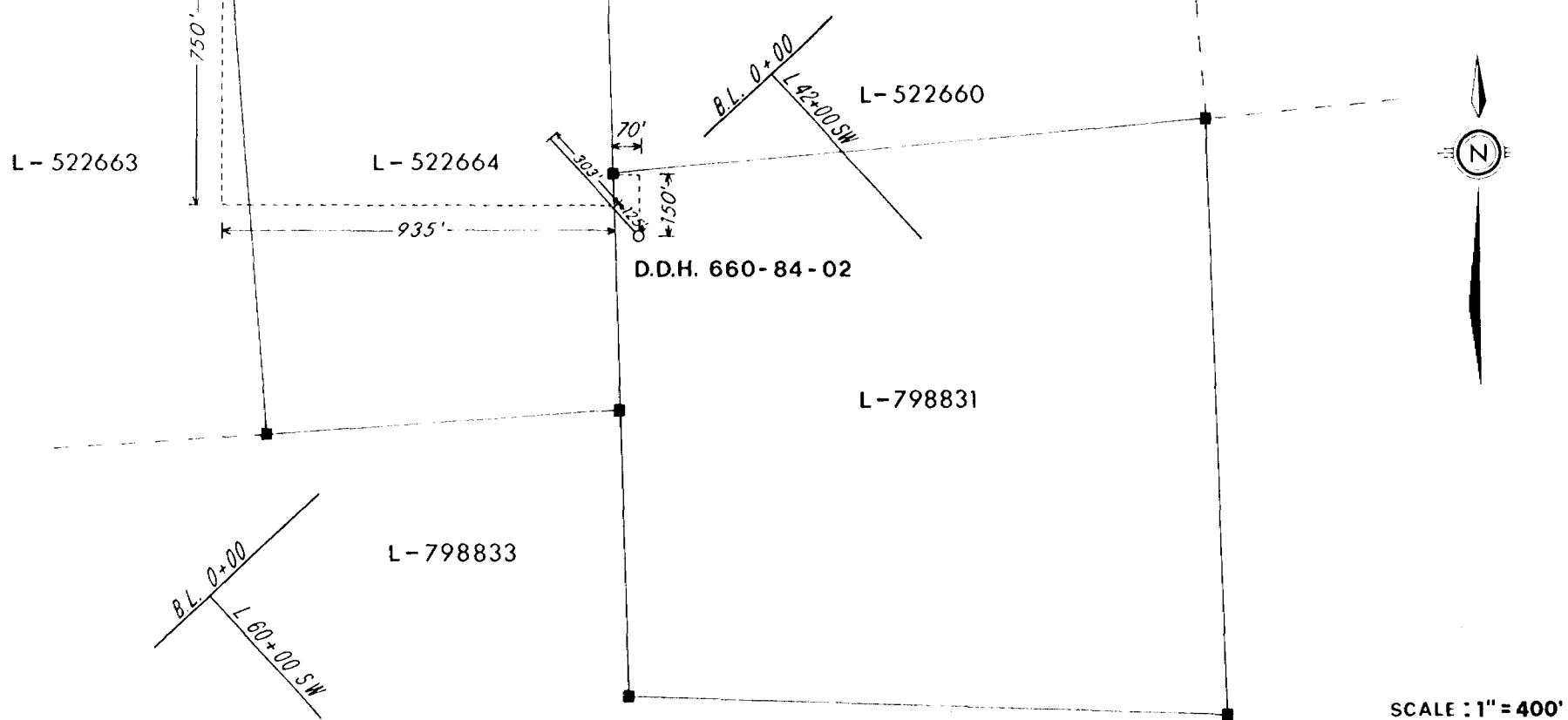


CORP. FALCONBRIDGE COPPER

VERTICAL SECTION OF D.D.H. 660-84-07

PROJECT: C.F.C. CLAIMS NO: PN 660
 CLAIM NO: L-522657
 TOWNSHIP: HEARST, ONTARIO NTS: 32 D/4
 LOGGED BY: MAGLOIRE BERUBE DATE: DECEMBER 1984
 TRACED BY: MAGLOIRE BERUBE DATE: DECEMBER 1984
 DRAWN BY: SERVICES EXPLORATION ENRG. 13/12/84
 REVISED BY: _____

LOCATION PLAN OF DIAMOND DRILL HOLE 660-84-02
ON CLAIMS L-798831 AND L-522664, HEARST TOWNSHIP ONT.

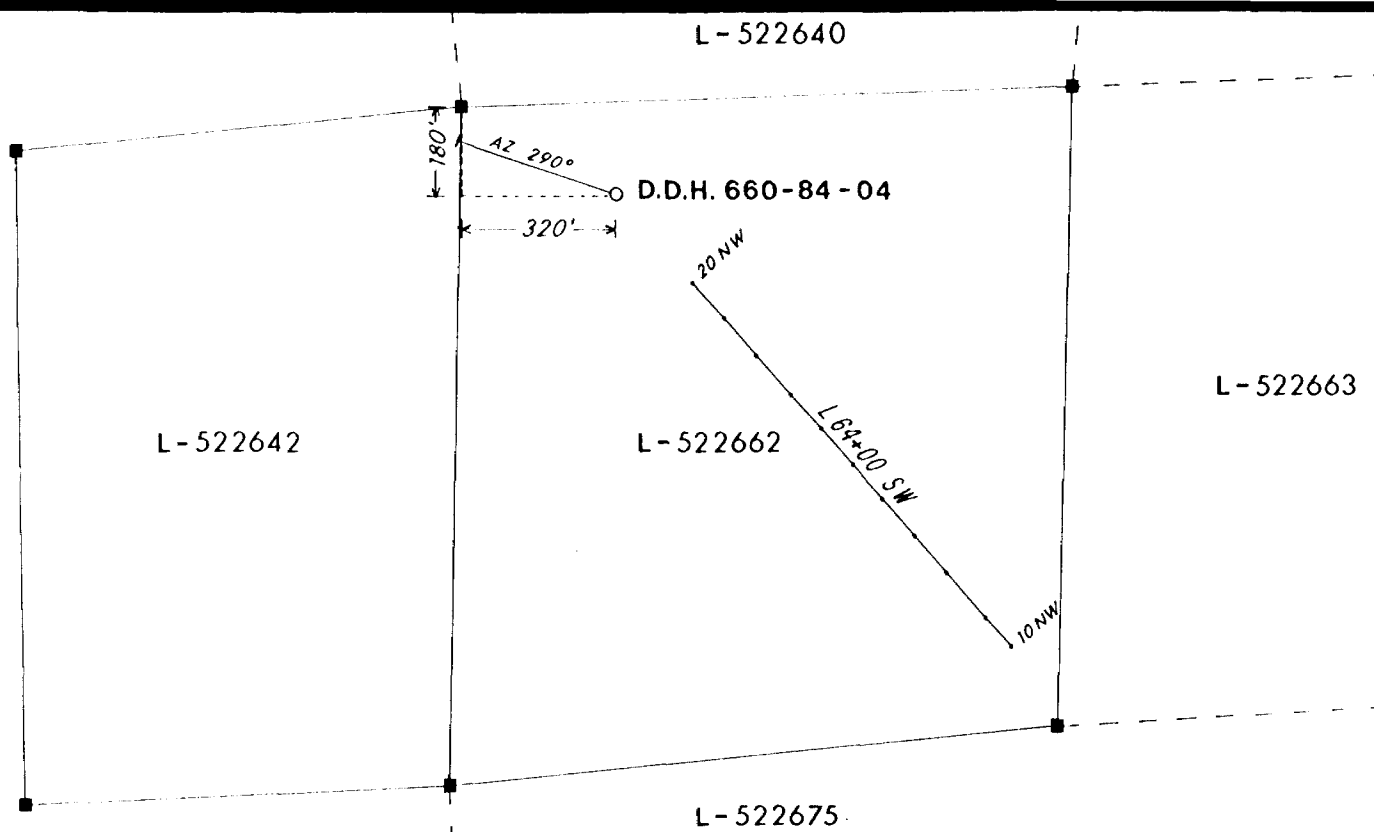


- LEGEND**
- V9 TUFF
 - V10 AGGLOMERATE
 - M ALTERATION ZONE
- SUFFIXES**
- Gp GRAPHITE
 - Py PYRITE
 - Po PYRRHOTITE
 - λ SERICITE
 - + SCHEARED

CORP. FALCONBRIDGE COPPER

VERTICAL SECTION OF D.D.H. 660-84-02

PROJECT: C.F.C. CLAIMS NO: PN 660
 CLAIM NO: L-798831 AND 522664
 TOWNSHIP: HEARST, ONTARIO NTS: 32 D/4
 LOGGED BY: MAGLOIRE BERUBE DATE: DECEMBER 1984
 TRACED BY: MAGLOIRE BERUBE DATE: DECEMBER 1984
 DRAWN BY: SERVICES EXPLORATION ENRG 13/12/84
 REVISED BY:



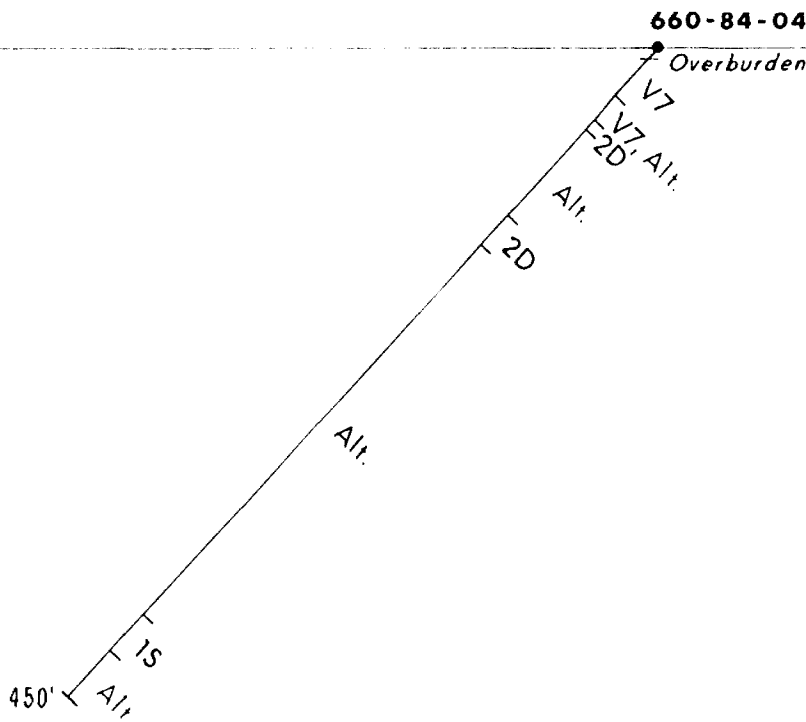
LOCATION PLAN OF DIAMOND DRILL HOLE 660-84-04
ON CLAIM L-522662, HEARST TOWNSHIP ONT.

SCALE: 1" = 400'

NO GEOPHYSICAL LINE ABOVE (OR PARALLEL TO), HOLE
DRILLED ON STRUCTURAL INTERPRETATION
AT INTERSECTION OF 3 ASSUMED FAULTS

AZIMUTH 290°

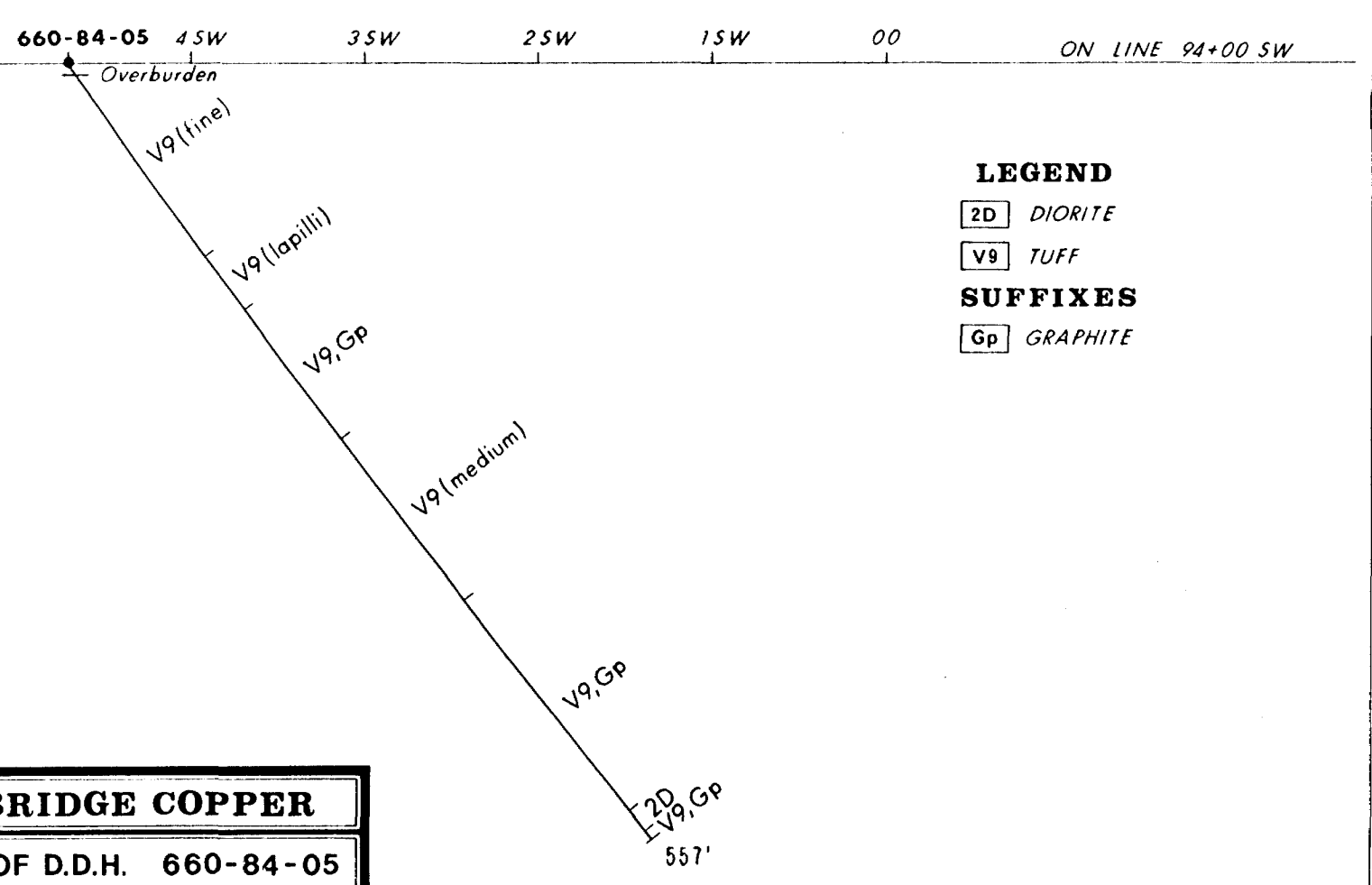
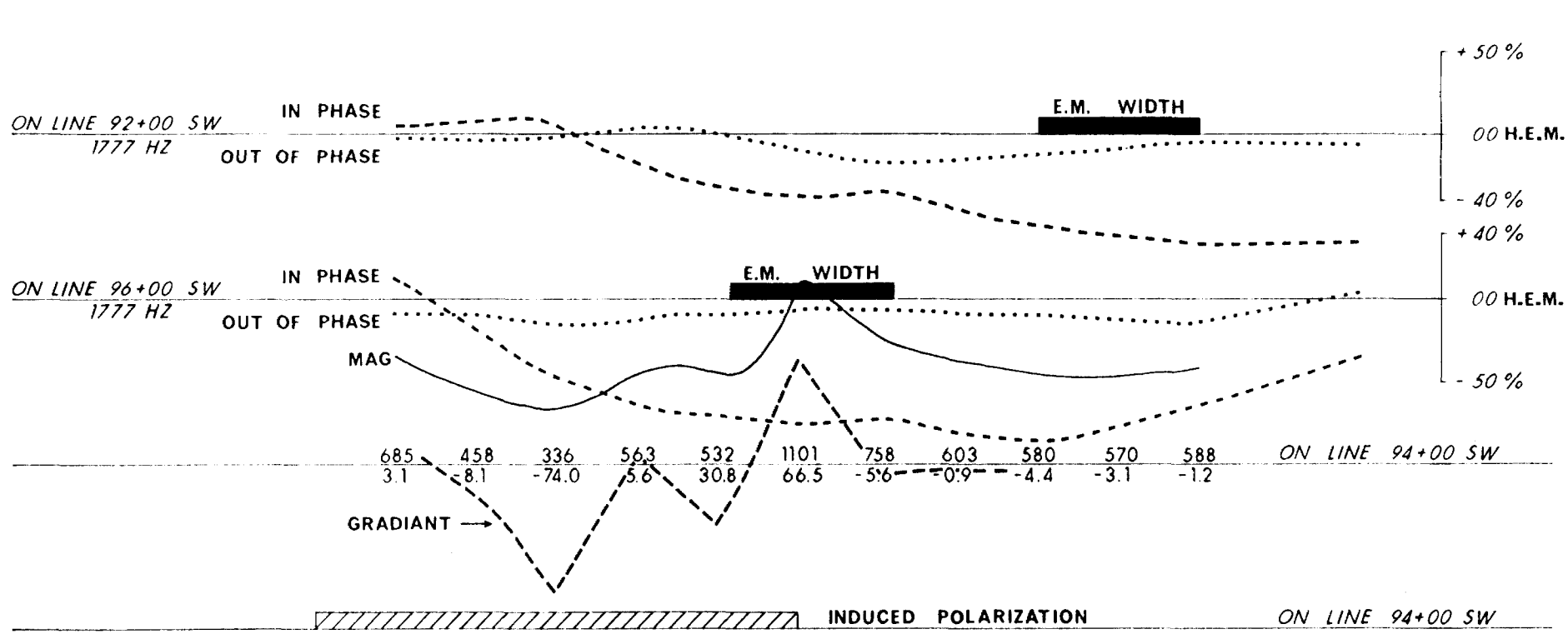
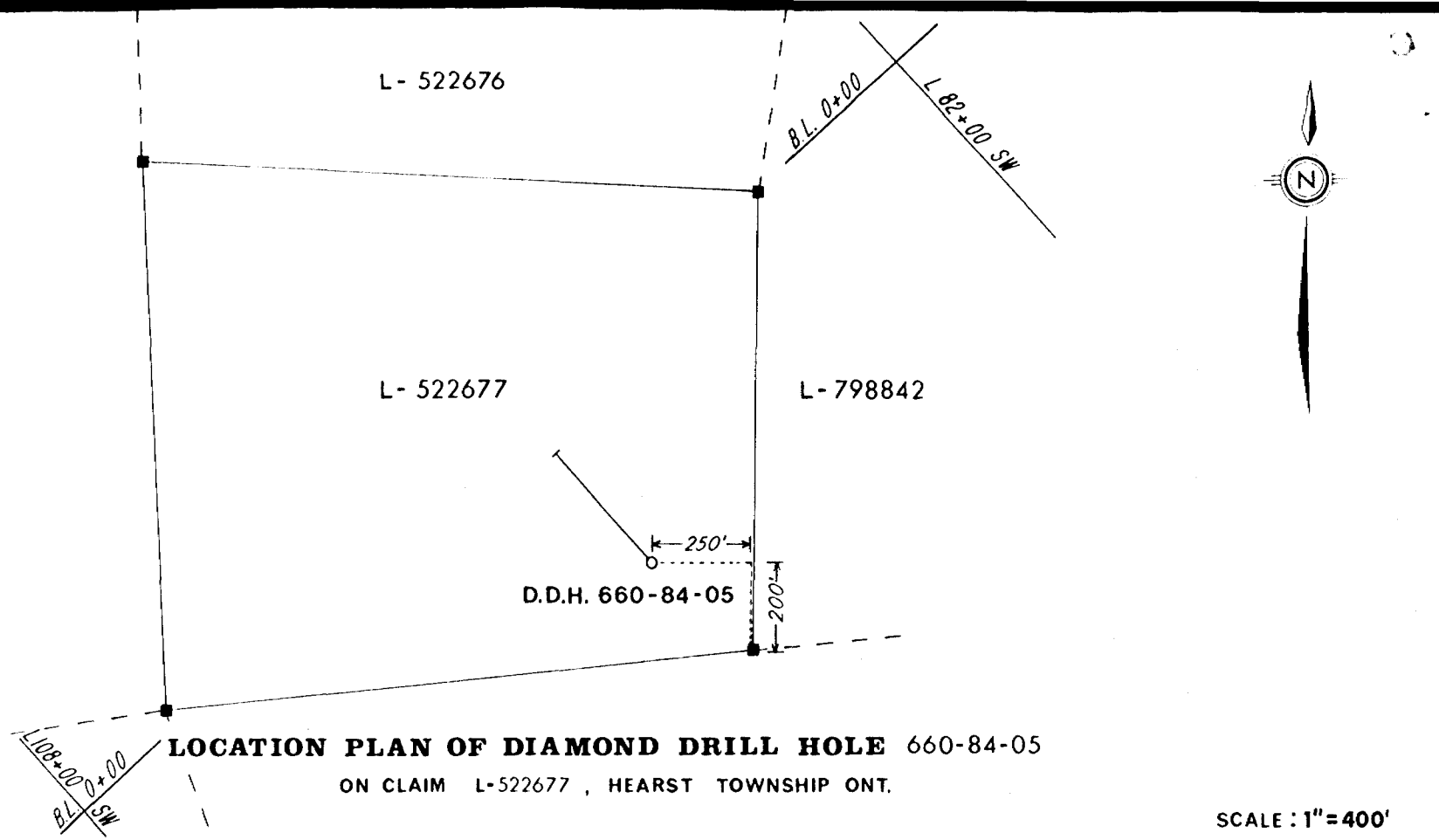
- LEGEND**
- 2D DIORITE
 - IS SYENITE
 - V7 BASALT
 - Alt. ALTERATION ZONE



CORP. FALCONBRIDGE COPPER

VERTICAL SECTION OF D.D.H. 660-84-04

PROJECT: C.F.C. CLAIMS NO: PN 660
 CLAIM NO: L-522662
 TOWNSHIP: HEARST, ONTARIO NTS: 32 D/4
 LOGGED BY: MAGLOIRE BERUBE DATE: DECEMBER 1984
 TRACED BY: MAGLOIRE BERUBE DATE: DECEMBER 1984
 DRAWN BY: SERVICES EXPLORATION ENRG. 13/12/84
 REVISED BY:



CORP. FALCONBRIDGE COPPER

VERTICAL SECTION OF D.D.H. 660-84-05

PROJECT:	C.F.C. CLAIMS	NO:	PN 660
CLAIM NO:	L-522677		
TOWNSHIP:	HEARST, ONTARIO	NTS:	32 D/4
LOGGED BY:	MAGLOIRE BERUBE	DATE:	DECEMBER 1984
TRACED BY:	MAGLOIRE BERUBE	DATE:	DECEMBER 1984
DRAWN BY:	SERVICES EXPLORATION ENRG.		13/12/84
REVISED BY:			

Hear #7



32D04SE0204 34 HEARST

Name and Postal Address of Recorded Holder

CORPORATION FALCONBRIDGE COPPER

T 556

900

P.O. BOX 40, COMMERCE COURT WEST, TORONTO, ONT. M5L 1B4

Summary of Work Performance and Distribution of Credits

Total Work Days Cr. claimed 1973	Mining Claim			Mining Claim			Mining Claim		
	Prefix	Number	Work Days Cr.	Prefix	Number	Work Days Cr.	Prefix	Number	Work Days Cr.
for Performance of the following work. (Check one only) <input type="checkbox"/> Manual Work <input type="checkbox"/> Shaft Sinking Drifting or other Lateral Work. <input type="checkbox"/> Compressed Air, other Power driven or mechanical equip. <input type="checkbox"/> Power Stripping <input checked="" type="checkbox"/> Diamond or other Core drilling <input type="checkbox"/> Land Survey	L	522657	100	L	522720	100	L	522729	100
		522662	60		522721	100		522730	100
		522664	100		522722	100		522731	100
		522677	100		522723	100			
					522724	100		798831	20
		522715	100		522725	100			253
		522716	100		522727	100			
		522717	60		522728	100			

All the work was performed on Mining Claim(s): L 522662, L 522664, L 522657, L 522677, L 798831

Required Information eg: type of equipment, Names, Addresses, etc. (See Table Below)

DIAMOND DRILL CONTRACTOR: BRADLEY BROS. LIMITED

98, 14 RUE

NORANDA, P.Q. J9X 5A9

RECORDED JAN 5 1985
REC. No.

LAKE MINING DIV.
RECEIVED
JAN 11 1985
7/8/9/10/11/12/13/14/15

4 HOLES DRILLED FROM DEC. 2 TO DEC. 14, 1984 (ALL AQ CORE SIZE):

660-84-02	660-84-04	660-84-05	660-84-07
DIP ANGLE: -44°	DIP ANGLE: -52°	DIP ANGLE: -55°	DIP ANGLE: -47°
LENGTH: 428 FEET	LENGTH: 450 FEET	LENGTH: 557 FT	LENGTH: 538 FEET
CL. L 522664 (303')	CLAIM L 522662	CLAIM L 522677	CLAIM L 522657
CL. L 798831 (125')			

ONTARIO GEOLOGICAL SURVEY
ASSESSMENT FILES

PLEASE RETAIN OR CLAIM L 798831 (238 0145) FOR FURTHER SUBMISSIONS.

Date of Report: JAN 4 1985
Recorded Holder or Agent (Signature): [Signature]

Certification Verifying Report of Work

I hereby certify that I have a personal and intimate knowledge of the facts set forth in the Report of Work annexed hereto, having performed the work or witnessed same during and/or after its completion and the annexed report is true.

Name and Postal Address of Person Certifying

MAGLOIRE BERUBE, P. ENG.

Date Certified

JAN. 4, 1985

Certified by (Signature)

[Signature: Magloire Berube]

1077 AVE. LOUIS JOBIN, SAINTE-FOY, P.Q. G1W 4K1

Table of Information/Attachments Required by the Mining Recorder

Type of Work	Specific information per type	Other information (Common to 2 or more types)	Attachments
Manual Work	Nil	Names and addresses of men who performed manual work/operated equipment, together with dates and hours of employment.	Work Sketch: these are required to show the location and extent of work in relation to the nearest claim post.
Shaft Sinking, Drifting or other Lateral Work			
Compressed air, other power driven or mechanical equip.			
Power Stripping	Type of equipment	Names and addresses of owner or operator together with dates when drilling/stripping done.	Work Sketch (as above) in duplicate
	Note: Proof of actual cost must be submitted within 30 days of recording.		
Diamond or other core drilling	Signed core log showing; footage, diameter of core, number and angles of holes.	Nil	Nil
Land Survey	Name and address of Ontario land surveyor.		



**ASSAYERS
LIMITED**

QUEBEC: 183 RUE GAMBLE O., C.P. 665 - ROUYN, J9X 2R8 - TEL: (819) 762-3010

ONTARIO: 20 VICTORIA STREET, SUITE 506 - TORONTO, M5C 2N8 - TEL: (416) 366-3100

GEOCHEMICAL ASSAYS

Received from: Falconbridge Ltee.
Reçu de: _____

Date Received: Dec. 1984
Reçu le: _____

Samples of: _____
Echantillons de: _____

Sample Decomposition
Décomposition d'échantillon _____

LAB NO.	CUSTOMER'S SAMPLE NUMBER	PARTS PER MILLION					GOLD		
		COPPER	ZINC	LEAD	NICKEL	MOLYBDENUM	PPB		
66237	01						110		
8	02						85		
9	03						74		
66240	04						87		
1	05						83		
2	06						101		
3	07						69		
4	08						69		
5	09						74		
6	10						83		
7	11						97		
8	12						87		
9	13						79		
66250	14						106		
1	15						64		
2	16						64		
3	17						83		
4	18						106		
66255	19						97		

ASSAYERS LIMITED

PER
PAR

[Handwritten Signature]

DATE Dec. 6, 1984

ANALYTICAL CHEMISTS - ASSAYERS - SHIPPERS' REPRESENTATIVES - CONSULTANTS

"AU SERVICE DE L'INDUSTRIE DEPUIS PLUS DE 40 ANS"

"SERVING INDUSTRY FOR OVER 40 YEARS"



**ASSAYERS
LIMITED**

QUEBEC: 183 RUE GAMBLE O., C.P. 665 - ROUYN, J9X 2R8 - TEL: (819) 762-3010

ONTARIO: 20 VICTORIA STREET, SUITE 506 - TORONTO, M5C 2N8 - TEL: (416) 366-3100

GEOCHEMICAL ASSAYS

Received from: Falconbridge Ltee. Date Received: Dec. 1984
Reçu de: _____ Reçu le: _____

Samples of: _____ Sample Decomposition
Echantillons de: _____ Décomposition d'échantillon _____

LAB NO.	CUSTOMER'S SAMPLE NUMBER	PARTS PER MILLION					GOLD PPB		
		COPPER	ZINC	LEAD	NICKEL	MOLYBDENUM			
66256	20						74		
7	21						69		
8	22						83		
9	23						37		
66260	24						28		
1	25						41		
2	27,						28		
66263	28						28		

ASSAYERS LIMITED

PER PAR *Jaques*

DATE Dec. 6, 1984

ANALYTICAL CHEMISTS – ASSAYERS – SHIPPERS' REPRESENTATIVES – CONSULTANTS

“AU SERVICE DE L'INDUSTRIE DEPUIS PLUS DE 40 ANS”

“SERVING INDUSTRY FOR OVER 40 YEARS”



ASSAYERS LIMITED

QUEBEC: 183 RUE GAMBLE O., C.P. 665 - ROUYN, J9X 2R8 - TEL: (819) 762-3010

ONTARIO: 20 VICTORIA STREET, SUITE 506 - TORONTO, M5C 2N8 - TEL: (416) 366-3100

GEOCHEMICAL ASSAYS

Received from: Falconbridge Ltee.
Reçu de: _____

Date Received: Dec. 1984
Reçu le: _____

Samples of: _____
Echantillons de: _____

Sample Decomposition
Décomposition d'échantillon _____

LAB NO.	CUSTOMER'S SAMPLE NUMBER	PARTS PER MILLION					GOLD	
		COPPER	ZINC	LEAD	NICKEL	MOLYBDENUM	PPB	CHECKS
67868	26						83	
9	29						41	
67870	30						37	
1	31						22	18, 25
2	32						41	
3	33						23	
4	34						37	
5	35						37	
6	36						28	
7	37						18	
8	38						53	
9	39						35	
67880	40						16	
1	41						5	
2	42						40	
3	43						32	
4	44						37	
5	45						18	
67886	46						28	

ASSAYERS LIMITED

DATE Dec. 11, 1984

PER [Signature]
PAR _____

ANALYTICAL CHEMISTS - ASSAYERS - SHIPPERS' REPRESENTATIVES - CONSULTANTS

"AU SERVICE DE L'INDUSTRIE DEPUIS PLUS DE 40 ANS"

"SERVING INDUSTRY FOR OVER 40 YEARS"



ASSAYERS LIMITED

QUEBEC: 183 RUE GAMBLE O., C.P. 665 - ROUYN, J9X 2R8 - TEL: (819) 762-3010

ONTARIO: 20 VICTORIA STREET, SUITE 506 - TORONTO, M5C 2N8 - TEL: (416) 366-3100

GEOCHEMICAL ASSAYS

Received from: Falconbridge Ltee.
Reçu de: _____

Date Received: Dec. 1984
Reçu le: _____

Samples of: _____
Echantillons de: _____

Sample Decomposition
Décomposition d'échantillon _____

LAB NO.	CUSTOMER'S SAMPLE NUMBER	PARTS PER MILLION					GOLD		
		COPPER	ZINC	LEAD	NICKEL	MOLYBDENUM	PPB		
67887	47						21		
8	48						25		
9	49						32		
67890	50						2		
67891	51						7		

ASSAYERS LIMITED

DATE Dec. 11, 1984

PER [Signature]
PAR _____

ANALYTICAL CHEMISTS – ASSAYERS – SHIPPERS' REPRESENTATIVES – CONSULTANTS

"AU SERVICE DE L'INDUSTRIE DEPUIS PLUS DE 40 ANS"

"SERVING INDUSTRY FOR OVER 40 YEARS"



ASSAYERS LIMITED

QUEBEC: 183 RUE GAMBLE O., C.P. 665 - ROUYN, J9X 2R8 - TEL: (819) 762-3010

ONTARIO: 20 VICTORIA STREET, SUITE 506 - TORONTO, M5C 2N8 - TEL: (416) 366-3100

GEOCHEMICAL ASSAYS

Received from: Falconbridge Ltee.
Reçu de: _____

Date Received: Dec. 1984
Reçu le: _____

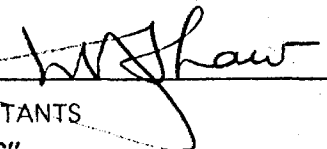
Samples of: _____
Echantillons de: _____

Sample Decomposition
Décomposition d'échantillon _____

LAB NO.	CUSTOMER'S SAMPLE NUMBER	PARTS PER MILLION					GOLD PPB		
		COPPER	ZINC	LEAD	NICKEL	MOLYBDENUM			
69075	52						7		
6	53						N.D.		
7	54						N.D.		
8	55						N.D.		
9	56						N.D.		
69080	57						5		
1	58						16		
2	59						9		
3	60						N.D.		
4	61						N.D.		
5	62						N.D.		
6	63						N.D.		
7	64						N.D.		
8	65						N.D.		
9	66						N.D.		
69090	67						N.D.		
1	68						N.D.		
69092	69						N.D.		

ASSAYERS LIMITED

DATE Dec. 13, 1984

PER
PAR 

ANALYTICAL CHEMISTS - ASSAYERS - SHIPPERS' REPRESENTATIVES - CONSULTANTS

"AU SERVICE DE L'INDUSTRIE DEPUIS PLUS DE 40 ANS"

"SERVING INDUSTRY FOR OVER 40 YEARS"



**ASSAYERS
LIMITED**

QUEBEC: 183 RUE GAMBLE O., C.P. 665 - ROUYN, J9X 2R8 - TEL: (819) 762-3010

ONTARIO: 20 VICTORIA STREET, SUITE 506 - TORONTO, M5C 2N8 - TEL: (416) 366-3100

GEOCHEMICAL ASSAYS

Received from: Falconbridge Ltee.
Reçu de: _____

Date Received: Dec. 1984
Reçu le: _____

Samples of: _____
Echantillons de: _____

Sample Decomposition _____
Décomposition d'échantillon _____

LAB NO.	CUSTOMER'S SAMPLE NUMBER	PARTS PER MILLION					GOLD PPB		
		COPPER	ZINC	LEAD	NICKEL	MOLYBDENUM			
69610	70						62		
1	71						30		
2	72						N.D.		
3	73						16		
4	74						N.D.		
5	75						N.D.		
6	76						N.D.		
7	77						N.D.		
8	78						N.D.		
9	79						N.D.		
69620	80						N.D.		
69621	81						930		

ASSAYERS LIMITED

DATE Dec. 14, 1984

PER
PAR *W. Shaw*

ANALYTICAL CHEMISTS - ASSAYERS - SHIPPERS' REPRESENTATIVES - CONSULTANTS

"AU SERVICE DE L'INDUSTRIE DEPUIS PLUS DE 40 ANS"

"SERVING INDUSTRY FOR OVER 40 YEARS"



ASSAYERS LIMITED

QUEBEC: 183 RUE GAMBLE O., C.P. 665 - ROUYN, J9X 2R8 - TEL: (819) 762-3010

ONTARIO: 20 VICTORIA STREET, SUITE 506 - TORONTO, M5C 2N8 - TEL: (416) 366-3100

GEOCHEMICAL ASSAYS

Received from: Falconbridge Ltee.
Reçu de: _____

Date Received: Dec. 1984
Reçu le: _____

Samples of: _____
Echantillons de: _____

Sample Decomposition
Décomposition d'échantillon _____

LAB NO.	CUSTOMER'S SAMPLE NUMBER	PARTS PER MILLION					GOLD	
		COPPER	ZINC	LEAD	NICKEL	MOLYBDENUM	PPB	
70811	82						41	
2	83						16	
3	84						5	
4	85						N.D.	
5	86						7	
6	87						5	
7	88						N.D.	
8	89						N.D.	
9	90						N.D.	
70820	91						41	
1	92						5	5, 5
2	93						N.D.	
3	94						7	
4	95						N.D.	
5	96						7	
6	97						N.D.	
7	98						28	
8	99						99	
70829	100						483	

ASSAYERS LIMITED

Dec. 18, 1984

DATE _____

PER
PAR

ANALYTICAL CHEMISTS - ASSAYERS - SHIPPERS' REPRESENTATIVES - CONSULTANTS

"AU SERVICE DE L'INDUSTRIE DEPUIS PLUS DE 40 ANS"

"SERVING INDUSTRY FOR OVER 40 YEARS"



**ASSAYERS
LIMITED**

QUEBEC: 183 RUE GAMBLE O., C.P. 665 - ROUYN, J9X 2R8 - TEL: (819) 762-3010

ONTARIO: 20 VICTORIA STREET, SUITE 506 - TORONTO, M5C 2N8 - TEL: (416) 366-3100

GEOCHEMICAL ASSAYS

Received from: Falconbridge Ltee.
Reçu de: _____

Date Received: Dec. 1984
Reçu le: _____

Samples of: _____
Echantillons de: _____

Sample Decomposition _____
Décomposition d'échantillon _____

LAB NO.	CUSTOMER'S SAMPLE NUMBER	PARTS PER MILLION					GOLD	SILVER	
		COPPER	ZINC	LEAD	NICKEL	MOLYBDENUM	PPB	PPM	
70830	101						58		
1	102						35		
2	103						11		
3	104						7		
4	105						14		
5	106						12		
6	107						28		
7	108						16		
8	109						7		
9	110						12		
70840	111						18		
1	112						58		
2	113						37		
3	114						26		
4	115						23		
5	116						23		
6	117	240	230	26			41	1.4	
7	118	230	1700	31			23	0.2	
70848	119	150	250	20			28	0.5	

ASSAYERS LIMITED

Dec. 18, 1984

DATE _____

PER
PAR

[Signature]

ANALYTICAL CHEMISTS - ASSAYERS - SHIPPERS' REPRESENTATIVES - CONSULTANTS

"AU SERVICE DE L'INDUSTRIE DEPUIS PLUS DE 40 ANS"

"SERVING INDUSTRY FOR OVER 40 YEARS"



**ASSAYERS
LIMITED**

QUEBEC: 183 RUE GAMBLE O., C.P. 665 - ROUYN, J9X 2R8 - TEL: (819) 762-3010

ONTARIO: 20 VICTORIA STREET, SUITE 506 - TORONTO, M5C 2N8 - TEL: (416) 366-3100

GEOCHEMICAL ASSAYS

Received from: Falconbridge Copper Ltee.
Reçu de: _____

Date Received: Dec. 1984
Reçu le: _____

Samples of: _____
Echantillons de: _____

Sample Decomposition _____
Décomposition d'échantillon _____

LAB NO.	CUSTOMER'S SAMPLE NUMBER	PARTS PER MILLION					GOLD	SILVER		
		COPPER	ZINC	LEAD	NICKEL	MOLYBDENUM	PPB	PPM		
70849	120	360	150	38			32	0.1		
70850	122	700	850	42			37	0.2		
1	121						51			
2	123						35			
70853	124						51			

ASSAYERS LIMITED

DATE Dec. 18, 1984

PER
PAR _____

ANALYTICAL CHEMISTS - ASSAYERS - SHIPPERS' REPRESENTATIVES - CONSULTANTS

"AU SERVICE DE L'INDUSTRIE DEPUIS PLUS DE 40 ANS"

"SERVING INDUSTRY FOR OVER 40 YEARS"

KIRKLAND LAKE : 15 miles

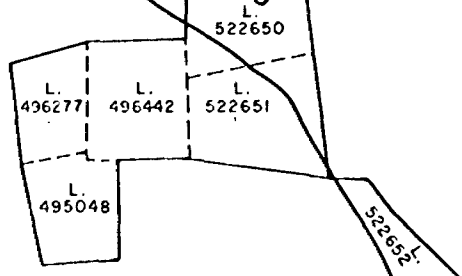
Road 66

ROUYN-NORANDA : 30 miles

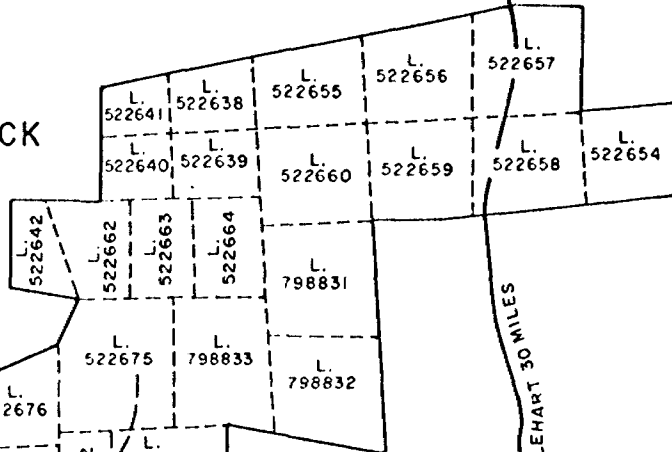
LARDER LAKE VILLAGE



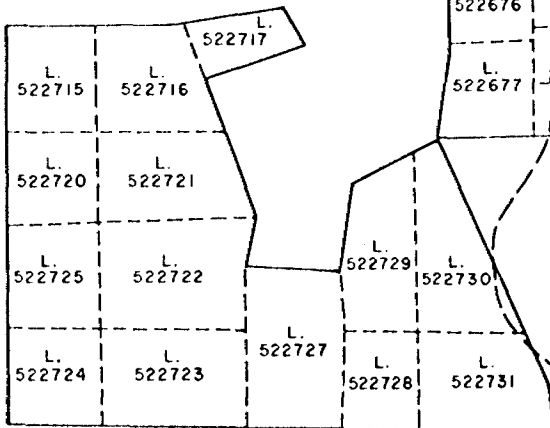
NORTH BLOCK



CENTRAL BLOCK



SOUTHWEST BLOCK



ENGLEHART 10.5 MILES

Summer gravel road

SKETCH

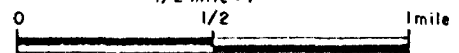
SHOWING LOCATION OF and ACCESS TO

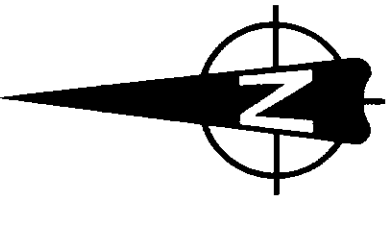
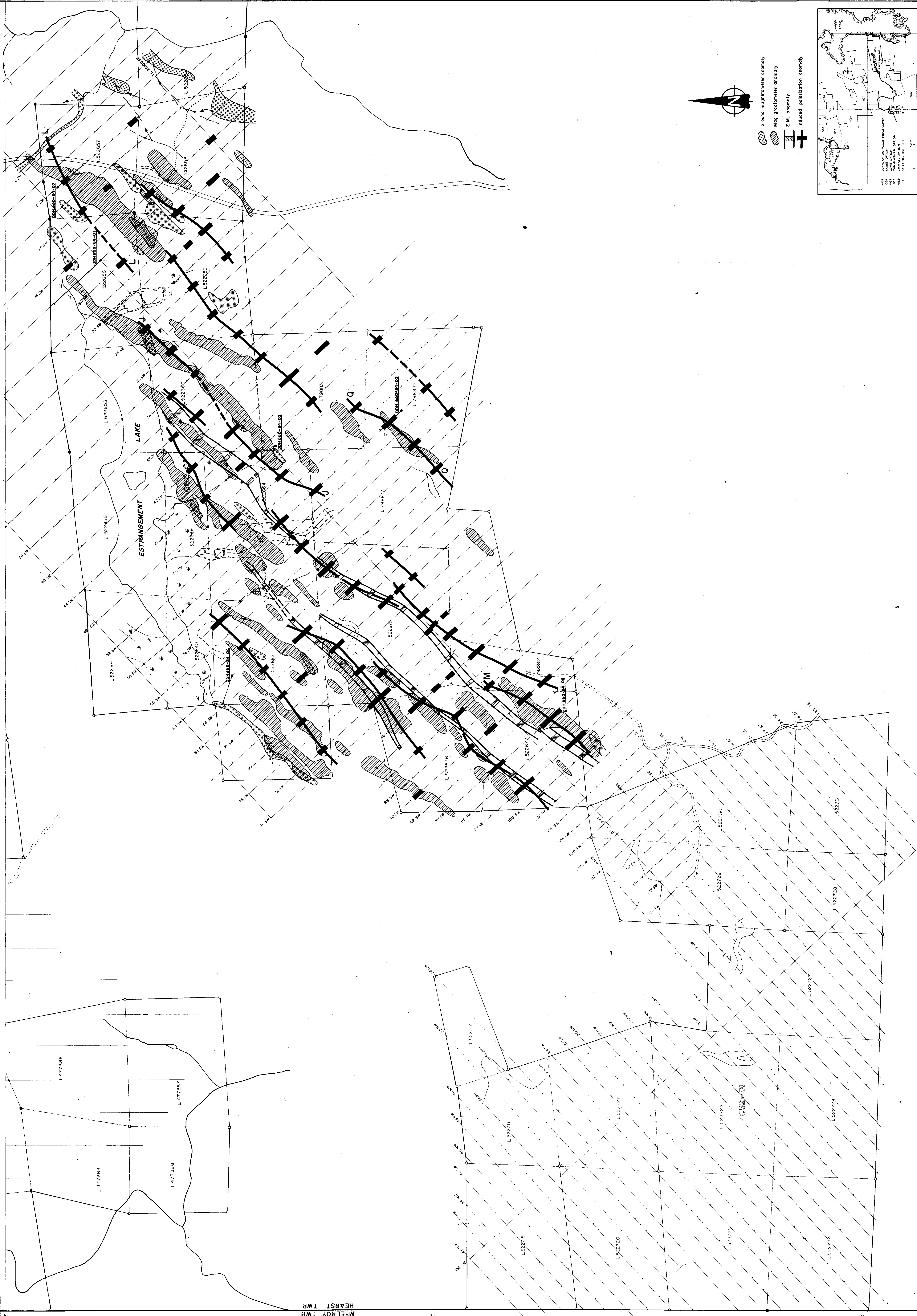
3 BLOCKS OF CLAIMS CONTROLLED BY:

FALCONBRIDGE LTD

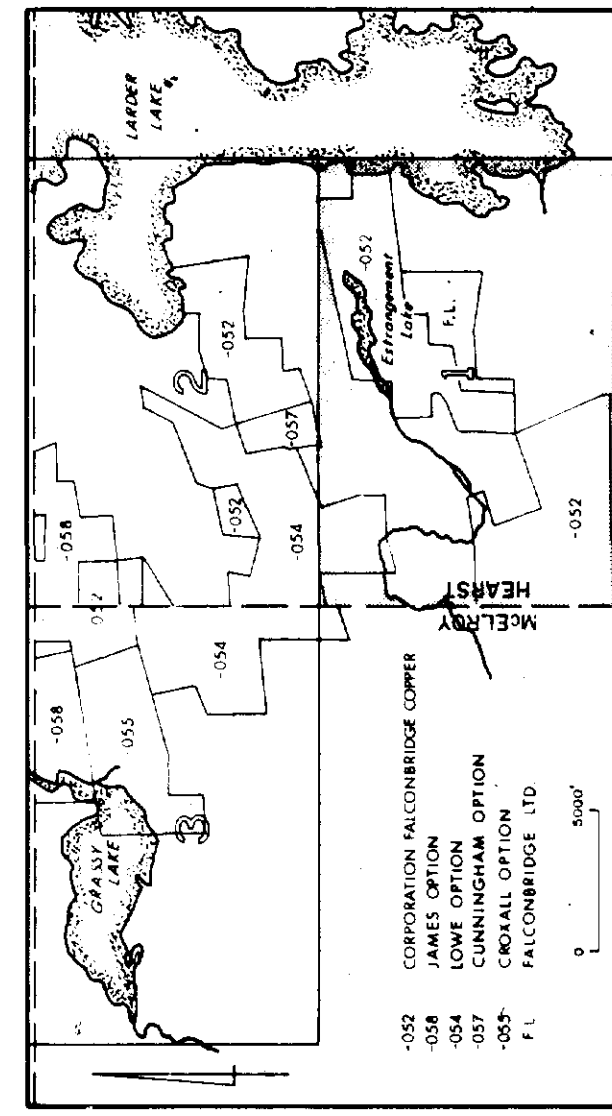
HEARST TOWNSHIP, ONTARIO

1/2 mile = 1"





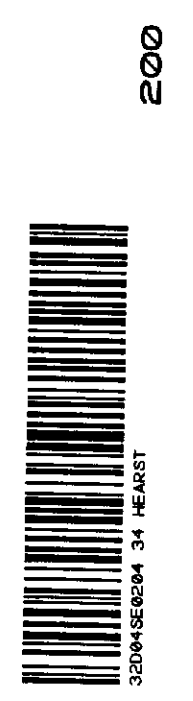
- Ground magnetometer anomaly
- Mag gradiometer anomaly
- E.M. anomaly
- Induced polarization anomaly



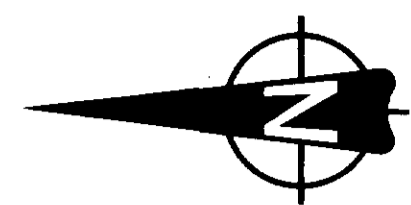
FALCONBRIDGE LIMITED
HEARST TWP PROJECT, PN-660
HEARST & MELROY TOWNSHIPS
ONTARIO
SHEET 1
ANOMALIES COMPILATION

Scale: 1" = 400'

Traced by: M. S. B. / Date: 04/04/04
 Drawn by: N.T.S. / Date: 04/04/04



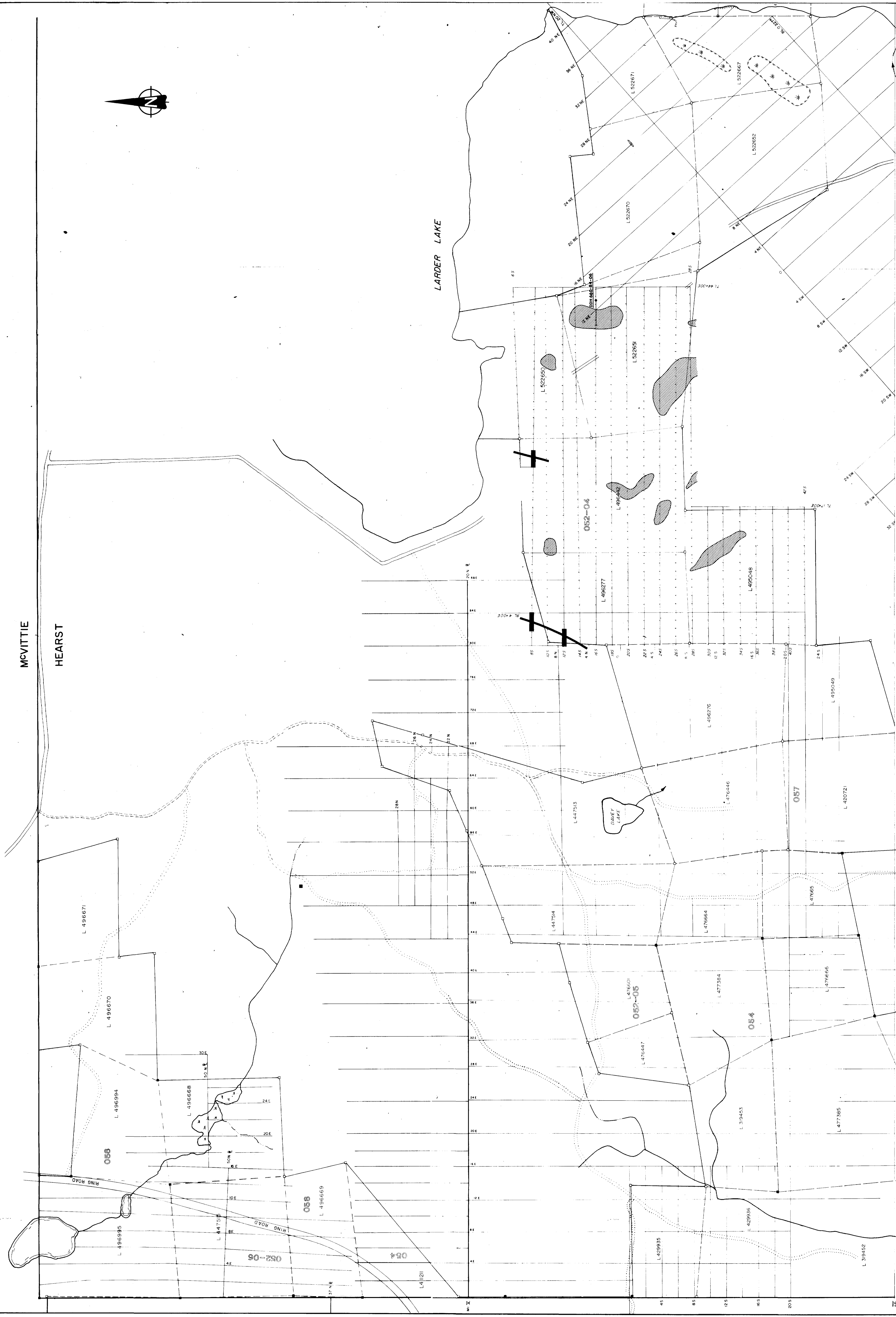
MAP No: 1



MCVITTIE

HEARST

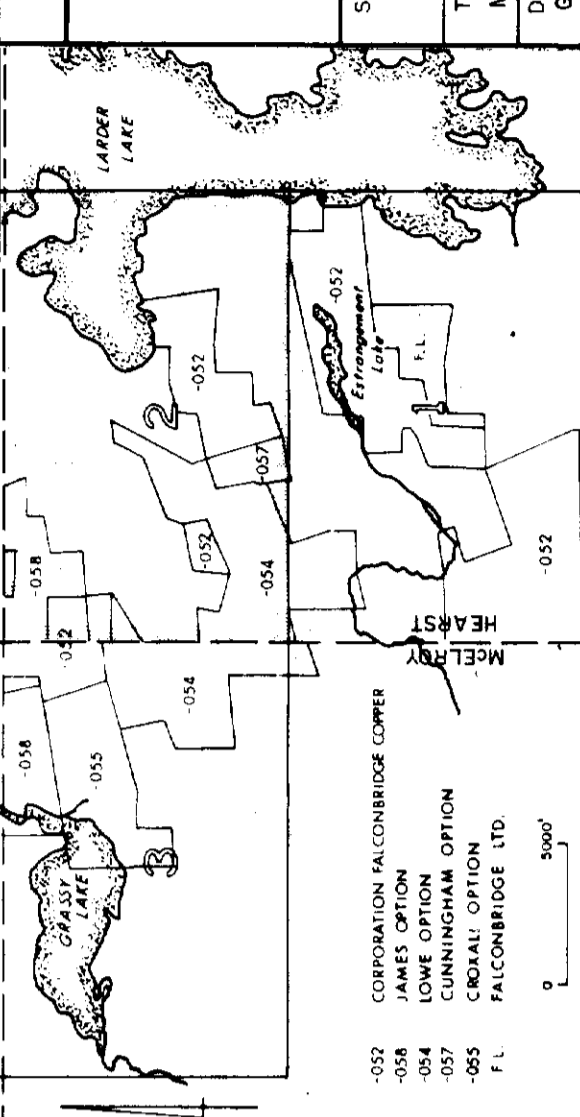
LARDER LAKE



FALCONBRIDGE LIMITED
 HEARST TWP PROJECT, PN-660
 HEARST & MEERBY TOWNSHIPS
 ONTARIO
 SHEET 2
 ANOMALIES COMPILATION

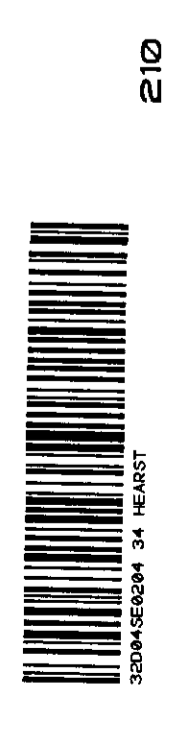
Scale: 1" = 400'
 0 100 200 300 400 500 600 700 800 900 1000'

Trace: M. Seguin
 Date: _____
 Rev: _____
 Size: No. 8 1/2
 N.T.S.



Legend:
 VLF Anomaly (shaded area)
 IP Anomaly (cross symbol)

MAP No:2



210