

DIAMOND DRILLING



32D04SE0206 31 HEARST

010

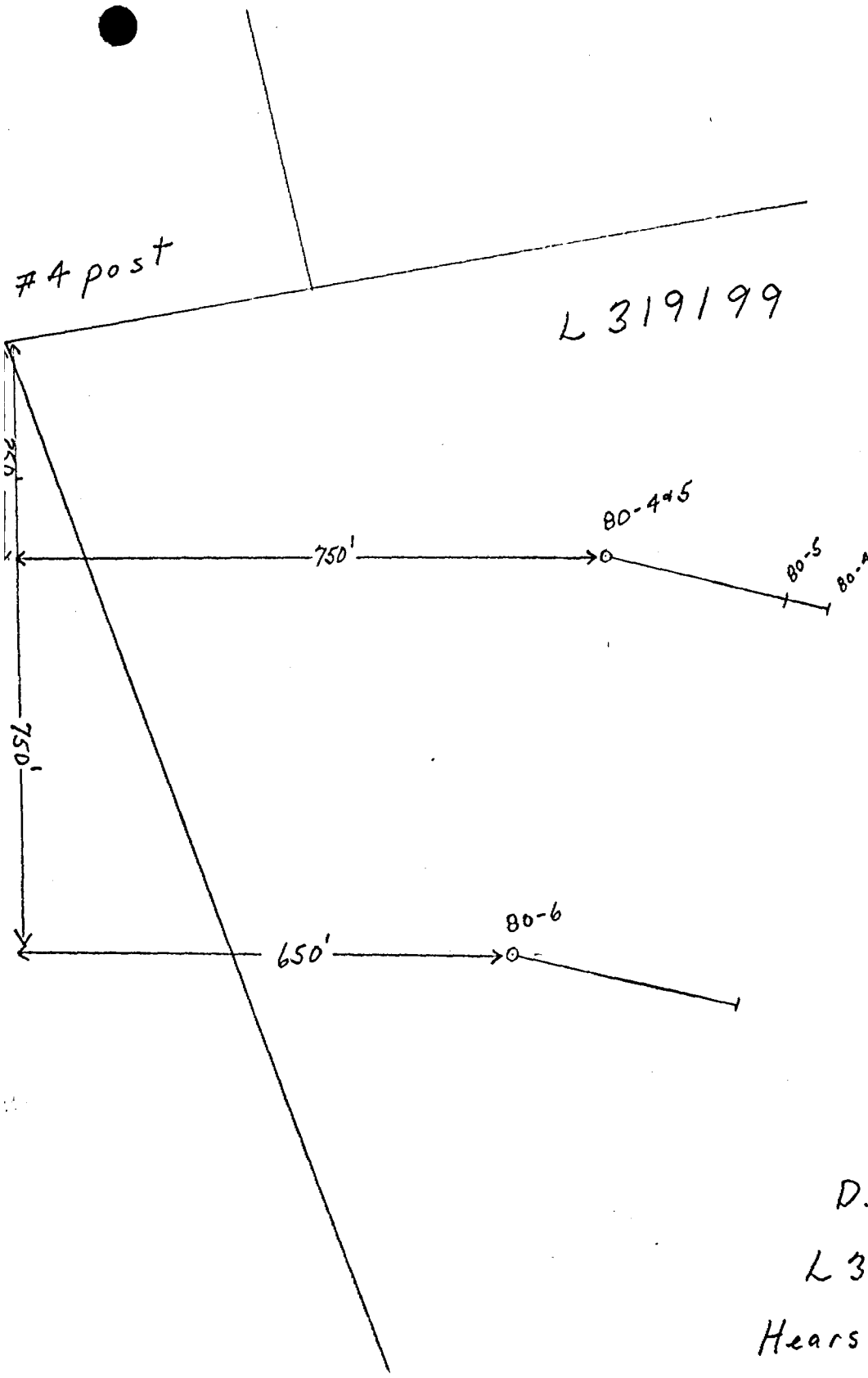
TOWNSHIP: Hearst

REPORT No.: 31

WORK PERFORMED BY: Robert A. MacGregor

<u>CLAIM No.</u>	<u>HOLE No.</u>	<u>FOOTAGE</u>	<u>DATE</u>	<u>NOTE</u>
L 319199	S80-4	306	Mar/80	(1)
	S80-5	304	Mar/80	(1)
	S80-6	322	Apr/80	(1)

NOTES: (1) #368-83



D. D. Holes  
L 319199  
Hearst + Mc Vittie Twp  
Scale 1" = 200'

## DIAMOND DRILL LOG

SUDBURY CONTACT MINES LTD

Hole No. - SED-4                      Elevation -  
 Started - March 26 1980              Dip - Collar --20°  
 Completed - March 28 1980  
 Bearing - 105° Az                      Hor. Adv 287.5'  
 Length - 306'  
 Purpose -

Claim - L319199  
 Location - Knutson Zone  
 Latitude - 5850N  
 Departure - 3382E  
 Logged by - Gary Grabowski  
 Drill Co. - Barron Drilling

DEPTH FEET	DESCRIPTION	SA
0 - 26'	Casing (Overburden)	
26 - 49.5'	<p>Mafic Volcanic  green-black fine grained, quartz veins  are very abundant, highly altered  white, barren quartz veins.</p> <p>7" at 28' quartz veins do not have  sharp contacts</p> <p>10" at 33'  7" at 43'  8" at 46'</p> <p>at 36', 6" section of fine grained, pyrite  rich syenite</p>	H
49.5 - 79	<p>Syenite porphyry  euhedral feldspars (up to 1/4") in a  matrix of chlorite and hematite  cut by numerous quartz veins  with no sharp contacts  fine grained pyrite disseminated  throughout core</p>	4
79 - 95	<p>Mafic Volcanics - as before  contact has chilled margin 40' CH  some py  at 91', core is syenitized.  (turning reddish-pink)</p>	

DEPTH FEET	DESCRIPTION	SAMPLE	ASSAYS	FOOTAGE	WIDTH
95-119.5	Hybrid Syenite fine-grained, silicified, well mineralized, magnetic in places (magnetite)				
119.5-135	Mafic Volcanics - as before				
135-139	white quartz vein - contains inclusions of syenite and Volcanics very little mineralization				
139-156	Hybrid Syenite - highly altered shot full of quartz veins looks like migmatite in places Some disseminated fine grained py 149' 3" qv 50° CA 152.5 2" qv 80° CA				
156-193	Talc chlorite schist quartz veins parallel to schistosity (40°-50° CA) gives rock appearance of migmatite				
193-197	Syenitized sediments 193'-contact 40° CA 197'-contact 30° CA disseminated py - some py cubes up to 1/4"				
197-202.5	Talc chlorite schist -as before				

DEPTH FEET	DESCRIPTION	SAMPLE No.	ASSAYS	FOOTAGE	WIDTH
202.5-306	Syenitized sediments fine to medium grained reddish coloured stain in matrix is the result of syenitization the matrix of the sediments contains carbonate - the rock is well foliated in places (bedding?) 30°-40° CA very little mineralization				
	280-282.5 fine grained, bleached, silicified syenite - disseminated py				
	282.5-287.5 silicified syenite but redder than above				
	286 2" barren white quartz vein 80° CA				
	306' End of Hole				

# DIAMOND DRILL LOG

SUDBURY CONTACT MINES LTD

Hole No. - 580-5  
 Started - March 28 1980  
 Completed - April 1 1980  
 Bearing - 105° Az  
 Length - 304'      Hor. Adv. 232.8'  
 Purpose -

Elevation -  
 Dip - Collar -- 40°

Claim - L319199  
 Location - Knutson Zone  
 Latitude - 5850N  
 Departure - 3382E  
 Logged by - Gary Grabowski  
 Drill Co. - Barron Drilling

DEPTH FEET	DESCRIPTION	SAMPLE No.	ASSAYS	FOOTAGE	WIDTH
0-22'	casing (Overburden)				
22'-116.5'	Syenite porphyry - greenish-white feldspar phenocrysts in a grey-black matrix of chlorite and hematite - becoming redder downhole fine grained pyrite disseminated throughout quartz veins				
22.5'	3"	60° CA	barren		
24'	1 1/2"	90° CA	"		
25'	3"	40° CA	"		
29'	1/2"	55° CA	some py		
31.5'	3 1/2"	80° CA	hematite		
32'	1 1/2"	60° CA	barren		
35'	1"	10° CA	"		
36'	1"	30° CA	"		
37'	8"	STOCKWORK	py		
37.5'	5"	40° CA	py		
39'	1"	60° CA	py		
44'	7"	60° CA	barren		
50'	6"	STOCKWORK	hematite		
52.5'	1 1/2"	40° CA	barren		
55'	1"	70° CA	py, cp		
68'	1 1/2"	60° CA	barren		
72'	1/2"	35° CA	"		
74'	1/2"	35° CA	"		
79'	1/2"	40° CA	py		
83'	1 1/2"	50° CA	barren		
93'	5"	40° CA	py		
108'	2"	70° CA	py		

DEPTH FEET	DESCRIPTION	SAMPLE No.	ASSAYS	FOOTAGE	WIDTH
116.5 - 118.5	Talc chlorite schist				
118.5 - 123	Quartz vein - white, barren mafic inclusions at 121'				
123 - 128	syenite porphyry				
128 - 131	Talc chlorite schist quartz veins parallel to schistosity as in hole H. 3" quartz vein at 130.5				
131 - 151	Syenite fine grained, silicified, finely disseminated pyrite (less than 1%) 133 1" 45° CA quartz veins 134 2" 70° CA 135 8" 20° CA 148.5 1/4" 20° CA 150 1/4" 50° CA  becoming more porphyritic at 143' with more hematite and chlorite in the matrix, less silicified and more pyrite				
151 - 176	Syenitized sediments as in holes medium to coarse grained, matrix is mostly chlorite, core is stained red - very little mineralization well foliated (45° CA) 140 1/2" 60° CA 145 1/2" 70° CA white barren				

DEPTH FEET	DESCRIPTION	SAMPLE	ASSAYS	FOOTAGE	WIDTH
176-195.5	Syenite porphyry silicified, fine pyrite disseminated				
195.5-204.5	Syenitized sediments - becoming silicified past 200' with migmatitic quartz veins				
204.5-239	Talc chlorite schist - quartz veins parallel to schistosity (60°CA) gives appearance of migmatite				
239-304	Syenitized Sediments fine to medium grained red or maroon coloured stain is pervasive through the core very little mineralization				
	304 end of hole				



## DIAMOND DRILL LOG

SUDBURY CONTACT MINES LTD

Hole No.	- S80-6	Elevation	-	Claim	- L319199
Started	- April 2 1980	Dip - Collar	- 25°	Location	- Knutson Zone
Completed	- April 3 1980			Latitude	- 5410N
Bearing	- 105° Az			Departure	- 3205E
Length	- 322'	Hor. Adv.	291.8'	Logged by	- Gary Grabowski
Purpose	-			Drill Co.	- Barron Drilling

DEPTH FEET	DESCRIPTION	SAMPLE No.	ASSAYS	FOOTAGE	WIDTH
0 - 108	Casing (overburden)				
108 - 110	Syenite fine grained, red, with finely disseminated pyrite, numerous random quartz veins				
110 - 125	Mafic Volcanics silicified and brecciated fine grained, dark green  fine grained altered bleached Syenite sections: 119-120 65° CA 121-122 40° CA 130-132 20° CA fine grained pyrite disseminated				
125 - 157	Green mica (fuchsite) schist foliated 45° CA Typical "green carbonite" of Larder Lake Brook and Kerr Addison Mine 147.5 28" no sharp 151 10" contacts 152 2" 45° CA 153 6" 20° CA 154 8" 05° CA				

DEPTH FEET	DESCRIPTION	SAMPLE No.	ASSAYS	FOOTAGE	WIDTH
157-193	Hybrid rock - containing well foliated (40°-50° CA) altered sediments and fine grained syenite - grades from one rock type to the other with no sharp contacts minor disseminated pyrite				
	Silicified, bleached section with fine grained pyrite disseminated at 170-174				
193-197	Syenite fine grained, mineralized				
197-203	Hybrid rock - altered sediments and syenite as before 199-6" section of white quartz with py and chalcopyrite				
203-208	Syenite fine grained with disseminated pyrite				
208-218	Talc chlorite schist foliated 50° CA				
218-223	Syenitized Sediments fine grained pyrite disseminated				
	222 ½" quartz vein 20° CA				
223-230.5	Talc chlorite schist 230- 4" quartz vein				



Ministry of  
Natural  
Resources

Report Assessment Library  
of Work

#368

Instructions - Supply required data on separate form for each

Ontario

Robert A. MacGregor

The Miner



32045E0206 31 HEARST

900

Name and Postal Address of Recorded Holder

Robert A. MacGregor

134 Palace Dr., Sault Ste. Marie, Ont. P6B 5H5

Summary of Work Performance and Distribution of Credits

Total Work Days Cr. claimed 809	Mining Claim 1111			Mining Claim			Mining Claim		
	Prefix	Number	Work Days Cr.	Prefix	Number	Work Days Cr.	Prefix	Number	Work Days Cr.
for Performance of the following work. (Check one only) <input type="checkbox"/> Manual Work <input type="checkbox"/> Shaft Sinking Drifting or other Lateral Work. <input type="checkbox"/> Compressed Air, other Power driven or mechanical equip. <input type="checkbox"/> Power Stripping <input type="checkbox"/> Diamond or other Core drilling <input type="checkbox"/> Land Survey	L	511758	10	L	522785	40	L	522793	45
		511689	30		522786	40		523067	60
		511690	29.6		522787	40		523068	60
		511691	45		522788	60		523071	60
		511692	10		522789	25		523072	60
		511693	5		522790	40		531353	4.4
		522783	40		522791	40			
		522784	40		522792	25			

All the work was performed on Mining Claim(s): L319199

Required Information eg: type of equipment, Names, Addresses, etc. (See Table Below)

Driller Barron Diamond Drilling,  
Haileybury, Ont

RECORDED NOV 14 1983  
REC. No.

Hole 80 - 4 306' Dip - 20°  
Hole 80 - 5 304' Dip - 40°  
Hole 80 - 6 322' Dip - 25°

Core size AQ

ONTARIO GEOLOGICAL SURVEY  
ASSESSMENT FILES  
RESEARCH OFFICE

DEC 2 1983

RECEIVED

932'

LAKEN LAKE  
RECEIVED  
OCT 28 1983  
AM  
7:10

Date of Report  
Oct. 14/83

Recorded Holder or Agent (Signature)

*R. MacGregor*

Certification Verifying Report of Work

I hereby certify that I have a personal and intimate knowledge of the facts set forth in the Report of Work annexed hereto, having performed the work or witnessed same during and/or after its completion and the annexed report is true.

Name and Postal Address of Person Certifying

Robert A. MacGregor, 134 Palace Dr.

SAULT STE. MARIE, Ontario P6B 5H5

Date Certified  
Oct. 14/83

Certified by (Signature)

*R. MacGregor*

Table of Information/Attachments Required by the Mining Recorder

Type of Work	Specific information per type	Other information (Common to 2 or more types)	Attachments
Manual Work	Nil	Names and addresses of men who performed manual work /operated equipment, together with dates and hours of employment.	Work Sketch: these are required to show the location and extent of work in relation to the nearest claim post.
Shaft Sinking, Drifting or other Lateral Work			
Compressed air, other power driven or mechanical equip.	Type of equipment	Names and addresses of owner or operator together with dates when drilling/stripping done.	Work Sketch (as
Power Stripping	Type of equipment and amount expended. Note: Proof of actual cost must be submitted within 30 days of recording.		
Diamond or other core	Size of core (see showing) feet, diameter of		