



32004SE0225 2.4551 HEARST

010

RECEIVED

FEB 19 1982

MINING LANDS SECTION

GEOLOGICAL & RADIOMETRIC SURVEYS

HINTON CLAIM L598586

put on file 23993

F.R. Ploeger, B.Sc.
December 21, 1981

Location & Access:

The claim is situated approximately 4.5 miles south of the town of Larder Lake in North-eastern Ontario. It may be reached via a series of logging roads extending westwards from Highway 624 across a reforested area.

Property:

The property consists of 1 unpatented mining claim, L598586, held by D.M. Hinton, 16 Plaza Square, Belleville, Ontario.

Previous Work:

Hearst Township was mapped in detail by J.E. Thomson for the Ontario Department of Mines in 1945-46. However, little assessment work has been recorded for the area covered by the Hinton claim.

Present Work:

The geological and radiometric surveys were conducted on September 19 and 20, 1981.

General Geology:

The rocks of Hearst Township represent a diverse mixture of lithologies which occurs between two major volcanic sequences within the Abitibi Belt. The Volcanic cycle to the south shows a complete differentiation trend from komatiitic, to tholeiitic, to calc-alkalic, culminating with the Skead pyroclastics and associated sediments. The overlying volcanic cycle to the north shows this same type of compositional differentiation ending with the Blake River calc-alkalic group. Wedged between two major volcanic suites is a later sequence of sedimentary and alkalic intrusive and extrusive rocks which form the Timiskaming Group. Cobalt Group sediments occur as north-south-trending "fingers" that overlie parts of all the other rock suites.

A major esker, the Munro esker, as well as many smaller eskers, kames, tills and glaciolacustrine and recent deposits obscure much of the bedrock of the entire area.

Property Geology:

The property is underlain by rocks of the Larder Lake Group. These consist mainly of sequences of interbedded greywackes and tuffs with occasional coarser grained units. The bedding direction ranges from about 120° in the south part of the claim to 180° near the north boundary. Dips are subvertical to steeply north, with tops overturned and facing south.

The sediments are made up of a number of lithologies. The dominant component is massive to well-bedded greywacke which is often interbedded with a sericitic argillite. In places the greywacke becomes gritty to pebbly and the argillite graphitic. The graphitic argillite contains narrow pyritic lenses and possible sphalerite mineralization. Also interbedded with the sediments are fine felsic to mafic tuffs, cherty tuffs, felsic crystal and lapilli tuff, and felsic agglomerates.

An east-west trending diorite or lamprophyre dike cuts the sediments in the south-west corner of the claim.

Minor quartz-carbonate veining is evident in several outcrops in the north-central portion of the claim. Minor disseminated pyrite and rare chalcopyrite are associated with these veins.

Radiometric Survey:


The present radiometric survey was conducted using a McPhar TV 1A spectrometer. Readings totalling 75 were taken at 100 foot intervals along pace and compass traverse lines spaced at approximately 400 feet. Control was provided by 1/4 mile and 400 foot to the inch air photographs. The readings indicate the total count as taken from the T1 scale.

The survey did not uncover any radiometrically anomalous areas.

Conclusion:

The claim is underlain mainly by greywackes and tuffs of the Larder Lake Group. Minor pyrite and rare chalcopyrite is associated with quartz-carbonate veins cutting this sequence.

Further surface stripping and trenching with assaying is warranted to determine the extent and significance of the pyrite mineralization.



F.R. Ploeger, Geologist

December 21, 1981

QUALIFICATION

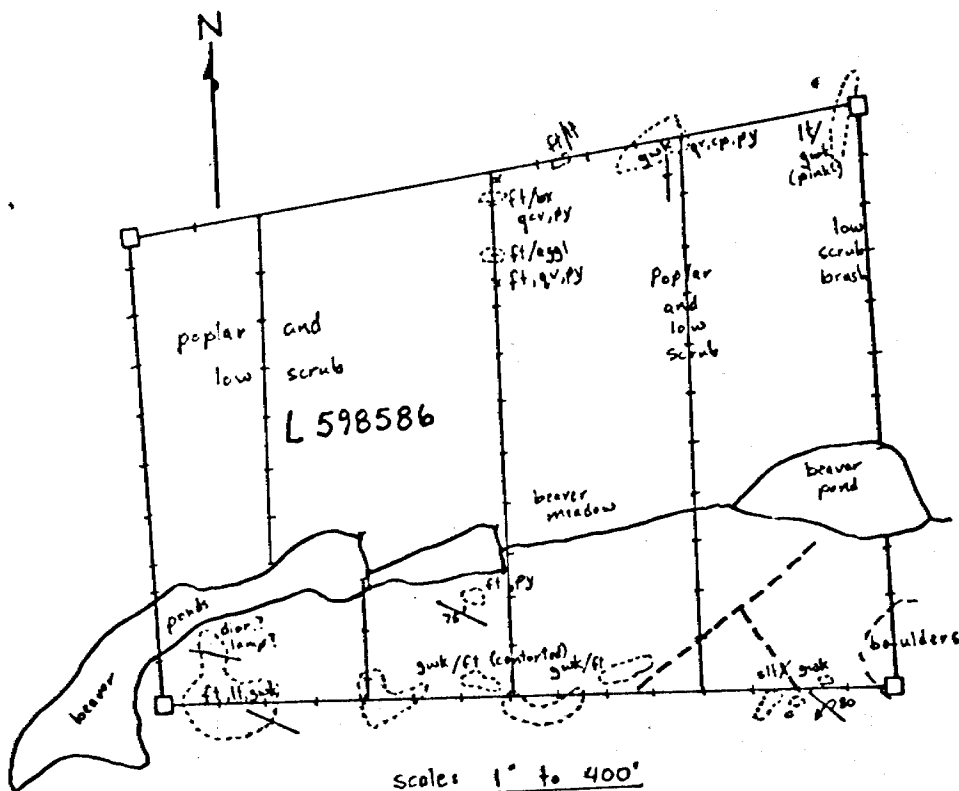
1. I, Frank Rainer Ploeger, reside in the Province of Ontario at 277 Ninth Avenue in Larder Lake;
2. That I graduated with a B.Sc. degree from the Geological Engineering Programme at Queen's University in 1973;
3. That I was employed by the Ontario Geological Survey, Ministry of Natural Resources for 7 years following graduation, 6 of those years in Kirkland Lake;
4. That this report is based on a survey conducted by the writer on the property.

Signed:


F.R. Ploeger

December 21, 1981

GEOLOGICAL SURVEY HINTON CLAIM L598586



LEGEND

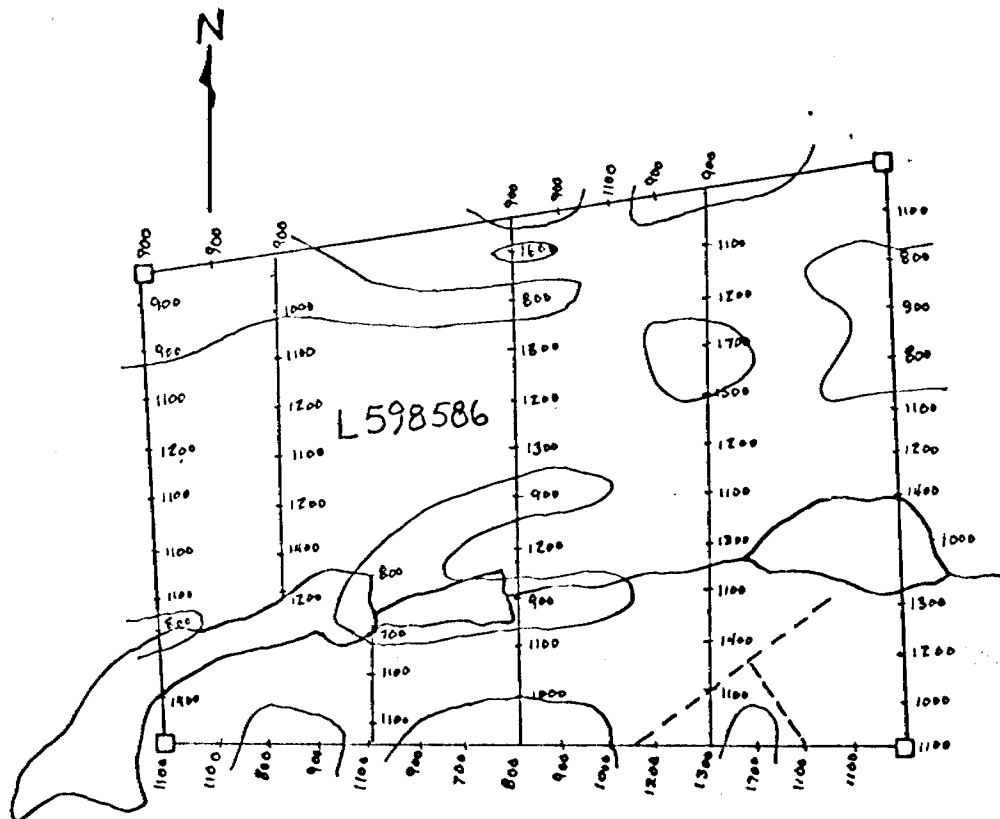
dior	diorite
lamp	lamprophyre
ft	falsic tuff
lt	lapilli tuff
bx	breccia
aggl	agglomerate
gwk	greywacke
sit	siltstone

SYMBOLS

○	outcrop or outcrop area
X	bedding with tops
□	claim post / lines
—	winter roads
+	traverse lines / stations
gv	quartz veins
gcv	quartz-carbonate veins
py	pyrite
cp	chalcopryite

H. P. [Signature]

RADIOMETRIC
SURVEY
HINTON CLAIM L598586



INSTRUMENT: McPhar TV-1A

CONTOUR INTERVAL: 500 γ

SCALE: 1 inch to 400 feet

Handwritten signature



Mining Lands Comments

To: Geophysics Mr Barber.

Comments

<input checked="" type="checkbox"/> Approved	<input type="checkbox"/> Wish to see again with corrections	Date <u>Oct 27 / 82</u>	Signature <u>[Signature]</u>
--	---	-------------------------	------------------------------

To: Geology - Expenditures Mr Kustra

Comments

<input checked="" type="checkbox"/> Approved	<input type="checkbox"/> Wish to see again with corrections	Date <u>Nov. 8 / 82</u>	Signature <u>[Signature]</u>
--	---	-------------------------	------------------------------

To: Geochemistry

Comments

LD

<input type="checkbox"/> Approved	<input type="checkbox"/> Wish to see again with corrections	Date	Signature
-----------------------------------	---	------	-----------

To: Mining Lands Section, Room 6462, Whitney Block. (Tel: 5-1380)

1982 02 24

2.4551

Mining Recorder
Ministry of Natural Resources
4 Government Road East
P.O. Box 984
Kirkland Lake, Ontario P2N 1A2

Dear Sir:

We have received reports and maps for a Geological and Radio-
metric Survey submitted under Special Provisions (credit for
Performance and Coverage) on mining claim L 598585 in the
Township of Hearst.

This material will be examined and assessed and a statement
of assessment work credits will be issued.

Yours very truly,

E.F. Anderson
Director
Land Management Branch

Whitney Block, Room 6450
Queen's Park
Toronto, Ontario
M7A 1W3
Phone: 416/965-1316

J. Skura/amc

cc: Frank R. Ploeger
Box 104
Larder Lake, Ontario