

DIAMOND DRILLING



32D04SE0256 20 HEARST

010

TOWNSHIP: Hearst

REPORT No.: 20

WORK PERFORMED BY: R.A. MacGregor

<u>CLAIM No.</u>	<u>HOLE No.</u>	<u>FOOTAGE</u>	<u>DATE</u>	<u>NOTE</u>
L. 290034	KAR 81-1	50.0	Jan/81	(1)
	KAR 81-2	42.0	Jan/81	(1)
	KAR 81-3	50.0	Jan/81	(1)
	KAR 81-4	48.0	-	(1)
	KAR 81-5	50.0	-	(1)
	KAR 81-6	61.0	-	(1)
	KAR 81-7	52.0	-	(1)
	KAR 81-8	60.0	-	(1)
	KAR 81-9	69.0	-	(1)
	KAR 81-10	61.0	-	(1)
	KAR 81-11	60.0	-	(1)
	KAR 81-12	65.0	-	(1)
	KAR 81-13	67.0	-	(1)
	KAR 81-14	42.0	-	(1)
	KAR 81-15	51.0	-	(1)
	KAR 81-16	60.0	-	(1)

NOTES: (1) #89-81



DIAMOND DRILLING  
Raven River Property  
Larder Lake Ontario  
Scale 1" = 20'

Claim L 290034 *Hearst Twp.*  
#4 post 240 west  
300 north  
from shaft

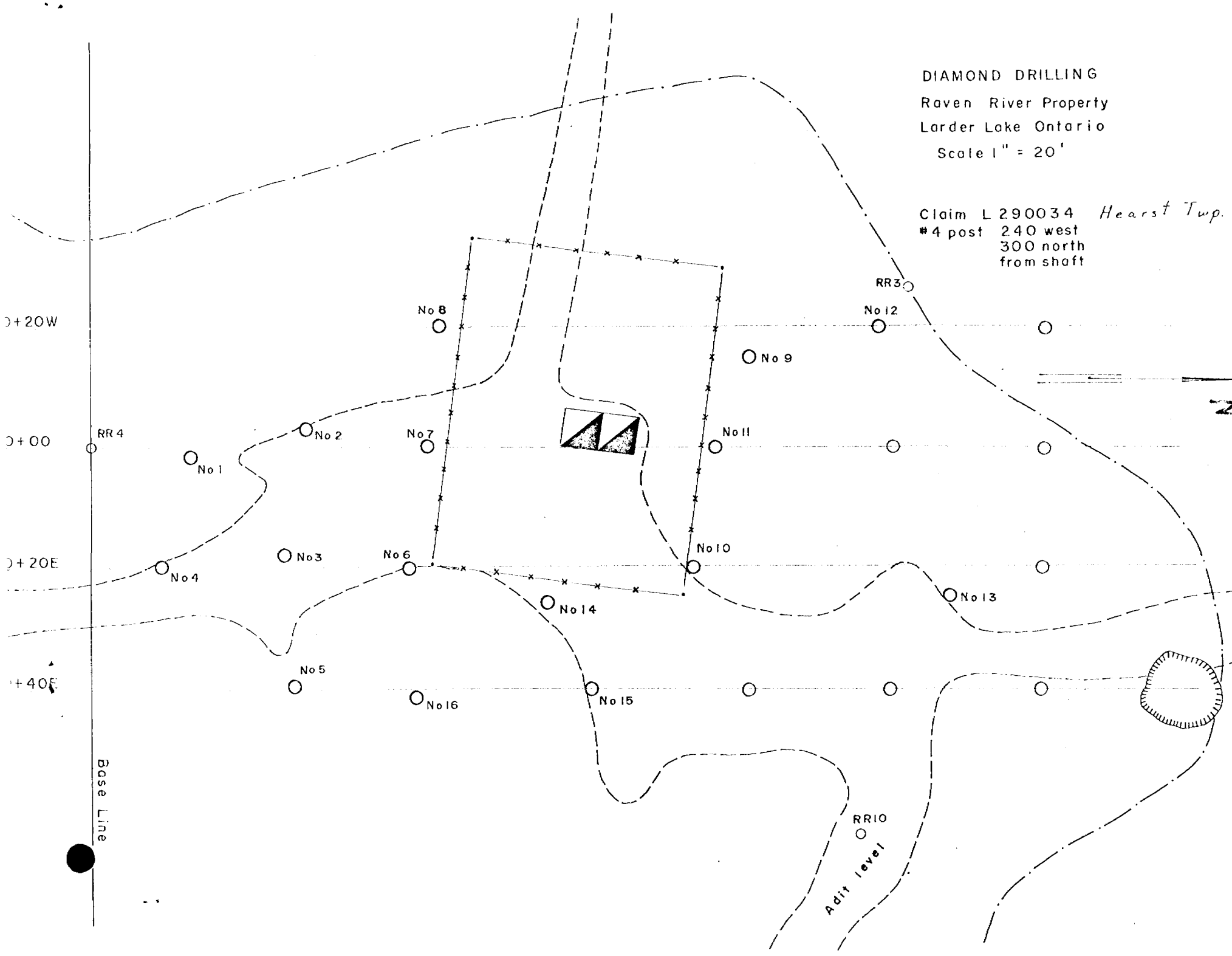
0+20W

0+00

0+20E

0+40E

Base Line



# DIAMOND DRILL RECORD

L. 290034

PROPERTY RAVEN RIVER HOLE No. KAR 81-1  
 SHEET NUMBER 1 SECTION FROM \_\_\_\_\_ TO \_\_\_\_\_ STARTED Jan. 28, 1981  
 LATITUDE 2'E L 0+00 DATUM \_\_\_\_\_ COMPLETED Jan. 29, 1981  
 DEPARTURE 17'N BEARING \_\_\_\_\_ ULTIMATE DEPTH 50.0'  
 ELEVATION 997.00 DIP Vertical PROPOSED DEPTH \_\_\_\_\_

DEPTH FEET	FORMATION	SAMPLE NO.	FROM	TO	WIDTH	ASSAY VALUES		
0-14	Casing							
14-50	Altered Syenite							
	25-28.5 Large Qtz-Carb Stock							
	work. Qtz-Carb 90%							
	--rest altered syenite							
	Lost core 30.0-32.0							

NORTHERN MINER FORM 505 REV./54

DRILLED BY Heath & Sherwood SIGNED G. McNicoll

# DIAMOND DRILL RECORD

PROPERTY RAVEN RIVER HOLE No. KAR 81-2  
 SHEET NUMBER 1 SECTION FROM \_\_\_\_\_ TO \_\_\_\_\_ STARTED Jan. 29/81  
 LATITUDE 3'W of I. 0+00E DATUM \_\_\_\_\_ COMPLETED Jan. 30/81  
 DEPARTURE 36.5' N BEARING \_\_\_\_\_ ULTIMATE DEPTH 42.0'  
 ELEVATION 997.00 DIP Vertical PROPOSED DEPTH \_\_\_\_\_

DEPTH FEET	FORMATION	SAMPLE NO.	FROM	TO	WIDTH	ASSAY VALUES		
0-15.0	Casing							
15-42	Syenite							
	25-27' lost core							















# DIAMOND DRILL RECORD

PROPERTY RAVEN RIVER HOLE No. KAR 81-9  
 SHEET NUMBER 1 SECTION FROM \_\_\_\_\_ TO \_\_\_\_\_ STARTED \_\_\_\_\_  
 LATITUDE 1, 20W DATUM \_\_\_\_\_ COMPLETED \_\_\_\_\_  
 DEPARTURE 112 N +5'E BEARING \_\_\_\_\_ ULTIMATE DEPTH 69.0'  
 ELEVATION 997.00 DIP Vertical PROPOSED DEPTH \_\_\_\_\_

DEPTH FEET	FORMATION	SAMPLE NO.	FROM	TO	WIDTH	ASSAY VALUES			
0-5.5	Casing								
5.5-69	Altered Syenite								
	40-40.5 Lost Core								

NORTHERN MINER FORM 505 REV. 754

DRILLED BY Heath & Sherwood SIGNED T. Jones

# DIAMOND DRILL RECORD

PROPERTY RAVEN RIVER HOLE No. KAR 81-10  
 SHEET NUMBER 1 SECTION FROM \_\_\_\_\_ TO \_\_\_\_\_ STARTED \_\_\_\_\_  
 LATITUDE L 20 E DATUM \_\_\_\_\_ COMPLETED \_\_\_\_\_  
 DEPARTURE 102'N BEARING \_\_\_\_\_ ULTIMATE DEPTH 61'  
 ELEVATION 997.00 DIP Vertical PROPOSED DEPTH \_\_\_\_\_

DEPTH FEET	FORMATION	SAMPLE NO.	FROM	TO	WIDTH	ASSAY VALUES			
0 -6.5	Casing								
6.5-61	Altered Syenite								

NORTHERN MINER FORM 505 REV./54

DRILLED BY Heath & Sherwood SIGNED T. Jones

# DIAMOND DRILL RECORD

PROPERTY RAVEN RIVER HOLE No. KAR - 81-11  
 SHEET NUMBER 1 SECTION FROM \_\_\_\_\_ TO \_\_\_\_\_ STARTED \_\_\_\_\_  
 LATITUDE L 00 DATUM \_\_\_\_\_ COMPLETED \_\_\_\_\_  
 DEPARTURE 106-N BEARING \_\_\_\_\_ ULTIMATE DEPTH 60'  
 ELEVATION 997.00 DIP Vertical PROPOSED DEPTH \_\_\_\_\_

DEPTH FEET	FORMATION	SAMPLE NO.	FROM	TO	WIDTH	ASSAY VALUES		
0-8	Casing							
8-60	Highly Altered Syenite							

NORTHERN MINER FORM 505 REV. 1954

DRILLED BY Heath & Sherwood SIGNED T. Jones

# DIAMOND DRILL RECORD

PROPERTY RAVEN RIVER HOLE No. KAR 81-12  
 SHEET NUMBER 1 SECTION FROM \_\_\_\_\_ TO \_\_\_\_\_ STARTED \_\_\_\_\_  
 LATITUDE L 20 W DATUM \_\_\_\_\_ COMPLETED \_\_\_\_\_  
 DEPARTURE 134 N BEARING \_\_\_\_\_ ULTIMATE DEPTH 65'  
 ELEVATION \_\_\_\_\_ DIP Vertical PROPOSED DEPTH \_\_\_\_\_

DEPTH FEET	FORMATION	SAMPLE NO.	FROM	TO	WIDTH	ASSAY VALUES			
0-9	Casing								
9-65	Altered Syenite								

NORTHERN MINER FORM 505 REV./54

DRILLED BY Heath & Sherwood SIGNED T. Jones

# DIAMOND DRILL RECORD

PROPERTY RAVEN RIVER HOLE No. KAR 81-13  
 SHEET NUMBER 1 SECTION FROM \_\_\_\_\_ TO \_\_\_\_\_ STARTED \_\_\_\_\_  
 LATITUDE 120 E +4.5'E DATUM \_\_\_\_\_ COMPLETED \_\_\_\_\_  
 DEPARTURE 145.5 N BEARING \_\_\_\_\_ ULTIMATE DEPTH 67'  
 ELEVATION \_\_\_\_\_ DIP Vertical PROPOSED DEPTH \_\_\_\_\_

DEPTH FEET	FORMATION	SAMPLE NO.	FROM	TO	WIDTH	ASSAY VALUES			
0-5	Casing								
5-67	Altered Syenite, very hard								

NORTHERN MINER FORM 505 REV./54

DRILLED BY Heath & Sherwood SIGNED T. Jones







