

DIAMOND DRILLING



32D04SE0281 18 HEARST

010

TOWNSHIP: HEARST

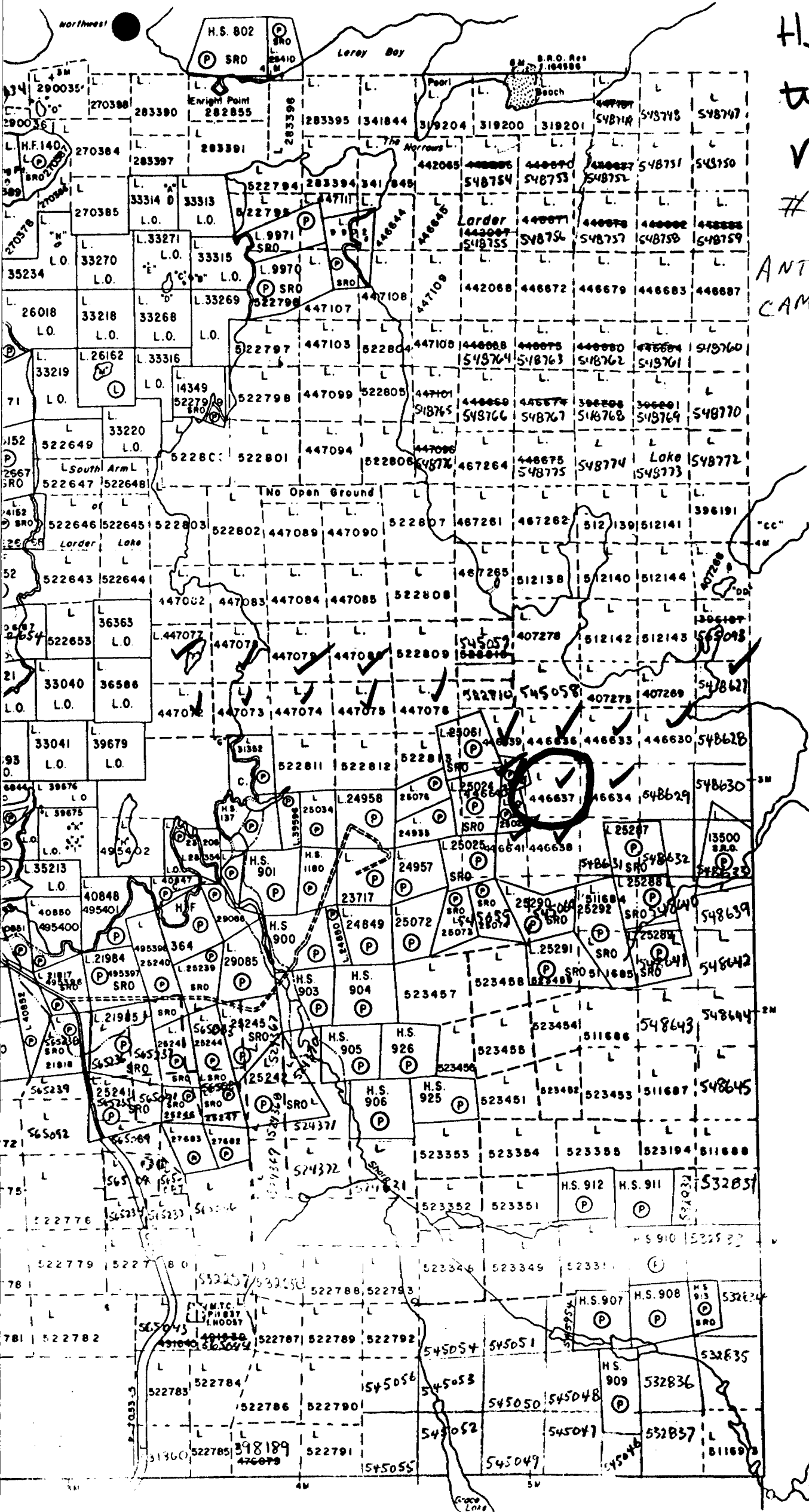
REPORT No.: 18

WORK PERFORMED BY: ANTHONY CAMISSO

<u>CLAIM No.</u>	<u>HOLE No.</u>	<u>FOOTAGE</u>	<u>DATE</u>	<u>NOTE</u>
L 446637	TS-80-EX2	395.0	Sept./80	(1)

NOTES: (1) # 223-80

TWP. M-370



Hearst

map

M354

22380
ANTHONY
CAMISSO

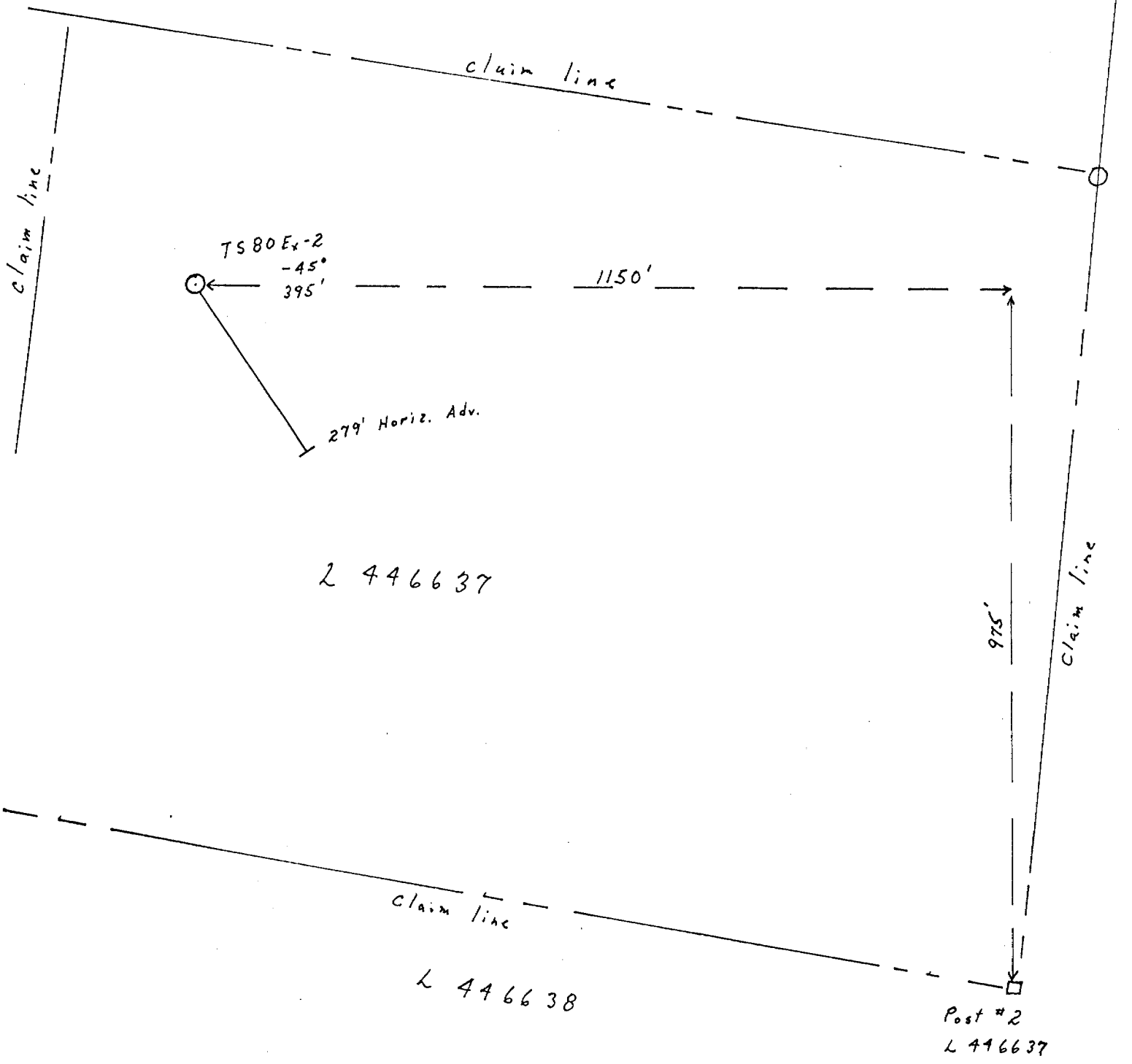
MCFADDEN TWP. M-368

PA
CR
LE
LO
LI
M
SU
RO
IM
KE
RA
PE
M
M
C
PA

40
of
To
CO
LA
St
Lo
of

N

Hearst Twp Ontario
Scale 1" = 200'



L 446637

L 446638

Post #2
L 446637

Hole No TS 80-Ex.2
Core BQ.

THUNDERWOOD EXPLORATION LIMITED

PROPERTY MARTIN BIRD

DIAMOND DRILL RECORD

DATE DEPTH CO-ORDINATES COLLAR
 WORKING PLACE LAT. N- DEP. E- AT
 SECTION TO COLLAR AT
 LOGGED BY Gordon Brethour BEARING South AT
 DATE FINISHED ANGLE -45°

CORE FOOTAGE		DESCRIPTION
FROM	TO	
0.0	10.5	Casing.
10.5	11.3	Greywacke or Tuff; grey-green, bedding 50° C.A., barren - minor py. banded near lower contact.
11.3	14.5	Syenite? grey, slight sheared appearance, silicified, numerous cherty ribbons and fragments, minor py.
14.5	17.7	Agglomerate? grey, fragments, elongated, bedding? 45° C.A., 2½" irregular section of chert, qtz. & calcite.
17.7	36.7	Greywacke? grey-green, numerous injections of qtz. bedding contorted, minor py. 20.3-24.0, minor -2% py. 24.0-25.5, silicified greyish, numerous injections of qtz. 3%-5%, fine-med. py., speckled 28.2-28.4 ankerite 28.7-29.3 several injections of qtz. with few large blebs of chalcopyrite @ 29.0, @ 36.2, small bleb of chalcopyrite
36.7	40.2	Tuff; abundant chert banding, several small injections of qtz., few erratic blebs of chalcopyrite, minor py.
40.2	43.1	Greywacke? dark greyish, silicified, several injections of ankerite, qtz. & chert, 3% - 5% fine-med. py.

TOTAL DEPTH
 WORKING PLACE
 SECTION
 LOGGED BY
 DATE FINISHED

CO-ORDINATES COLLAR
 LAT. N-- DEP. E--
 TO COLLAR
 BEARING
 ANGLE

CORE FOOTAGE		DESCRIPTION
FROM	TO	
43.1	50.2	Chlorite Zone; dark green-blackish, moderately-highly schistose minor - 3% py. in places, broken and blocky.
50.2	55.5	Syenite: dark greyish, somewhat basic, minor -3% fine-med. py. in places
55.5	63.9	Chlorite Zone; as above (43.1-50.2) lineation 45° C.A.
63.9	72.0	Syenite? as above (50.2 - 55.5) 67.6 - 68.7, numerous injection of qtz., 5% med.-coarse py.
72.0	79.3	Chlorite Zone; as above (43.1-50.2) lineation 45° C.A.
79.3	83.7	Syenite: as above (50.2 - 55.5) 5% py.
83.7	85.3	Chlorite Zone; as above (43.1 - 50.2)
85.3	92.4	Syenite? as above (50.2 - 55.5)
92.4	94.2	Chlorite Zone; as above (43.1 - 50.2) lineation 45° C.A.
94.2	96.7	Syenite? as above (50.2 - 55.5), 5%-7% fine-med. py.

TOTAL DEPTH
 WORKING PLACE
 SECTION
 LOGGED BY
 DATE FINISHED

CO-ORDINATES COLLAR
 LAT. N— DEP. E—
 TO COLLAR
 BEARING
 ANGLE

D
 AT
 AT
 AT

CORE FOOTAGE		DESCRIPTION
FROM	TO	
96.7	97.7	Chlorite Zone; as above (43.1-50.2)
97.7	99.8	Syenite? as above (43.1-50.2) with 6" inclusion of chloritic schist @ 98.7
99.8	101.3	Chlorite Zone as above (43.1- 50.2) 3% med.-coarse py.
101.3	102.7	Syenite? as above (50.2 - 55.5)
102.7	114.6	Chlorite Zone; as above (43.1 - 50.2), contorted, lineation irregular.
114.6	115.1	Syenite? as above (50.2 - 55.5)
115.1	127.0	Chlorite Zone; as above (43.1 - 50.2), lineation 45° C.A.
127.0	133.1	Tuff; chertz banding, bedding 45° C.A.
133.1	143.4	Chlorite Zone; as above (43.1 - 50.2)
143.4	144.6	Syenite: as above (50.2 - 55.5) 5% py., traces of chalcopyrite.

TOTAL DEPTH	CO-ORDINATES COLLAR	DI
WORKING PLACE	LAT. N- DEP. E-	AT
SECTION	TO COLLAR	AT
LOGGED BY	BEARING	AT
DATE FINISHED	ANGLE	

CORE FOOTAGE		DESCRIPTION
FROM	TO	
144.6	170.0	Chlorite Zone; as above (43.1 - 50.2) @ 145.9, 5" inclusion of syenite? with 1" patch of py. 146.3 - 147.7, light grey-green, carbonatized, abundance of dark elongated phenocrysts, barren. 147.7 - 170.0, erratic small inclusions of syenite?
170.0	173.4	Greywacke? greyish, few small injections of qtz. & calcite, barren 172.6 - 173.4, grey-light grey, abundant medium sized feldspar phenocrysts.
173.4	179.2	Chlorite Zone; as above (43.1 - 50.2)
179.2	180.2	Greywacke: grey-green-dark grey-green, speckled, barren, minor py.
180.2	181.0	Lamprophyre Dyke;
181.0	182.7	Greywacke? as above (179.2 - 180.2)
182.7	183.8	Basic Tuff; bedding 50° C.A., 2% - 3% py. traces of chalcopyrite.
185.8	187.3	Chlorite Zone; abundant carbonatization, barren-traces of py,

TOTAL DEPTH

COORDINATES COLLAR

DI

WORKING PLACE

LAT. N--

DEP. E--

AT

SECTION

TO COLLAR

AT

LOGGED BY

BEARING

AT

DATE FINISHED

ANGLE

CORE FOOTAGE		DESCRIPTION
FROM	TO	
187.3	194.0	Greywacke? dark greyish, several small injections of qtz. & calcite, slightly speckled, barren to traces of py.
194.0	198.2	Chlorite Zone; as above (43.1 - 50.2)
198.2	200.5	Graphite Zone; several small injections of qtz., 5%-7% py.
200.5	210.3	Syenite? grey-grey-brown, med.-coarse grained appearance; few qtz. & calcite-filled fractures, minor py. 207.0-210.3, fine grained, basic traces of py.
210.3	219.0	Acid Tuff; banded 45° C.A., barren-traces of py.
219.0	224.9	Rhyolite? grey-buff, massive abundance of qtz. & cal. filled, hairline fractures, brecciated sections containing graphite, 3% py.
224.9	226.0	Cherty-graphitic, tuff; banding 70° - 75° C.A.
226.0	229.1	Syenite: buff-greyish, altered, silicified, 5%-7% fine-med. py.
229.1	230.6	Cherty graphitic tuff; as above (224.9 - 226.0)

TOTAL DEPTH

CO-ORDINATES COLLAR

WORKING PLACE

LAT N--

DEP. E--

SECTION

TO COLLAR

LOGGED BY

BEARING

DATE FINISHED

ANGLE

CORE FOOTAGE		DESCRIPTION
FROM	TO	
230.6	231.6	Lamprophyre Dyke? highly altered, carbonatized, creamy green, dark lathlike phenocrysts, barren.
231.6	234.3	Greywacke? 233.5 - 234.3, graphitic section.
234.3	238.3	Lamprophyre Dyke? as above (230.6 - 231.6)
238.3	239.0	Syenite? greyish, altered, silicified, barren.
239.0	241.2	Graphite Zone;
241.2	256.1	Cherty graphitic tuff; bedding @ 65° - 70° C.A.
256.1	259.1	Syenite? grey, fine-med. grained, occasional small qtz. & cal. filled fractures, barren.
259.1	260.7	Greywacke? greyish, fine, few small qtz. veinlets, bedding 75° C.A., barren.
260.7	263.4	Syenite? dark grey, fine grained, somewhat basic, speckled, few small qyz. & cal. filled fractures, traces of py.
263.4	265.5	Basic - Intermediate Intrusive;

TOTAL DEPTH
 WORKING PLACE
 SECTION
 LOGGED BY
 DATE FINISHED

CO-ORDINATES COLLAR
 LAT. N— DEP. E—
 TO COLLAR
 BEARING
 ANGLE

CORE FOOTAGE		DESCRIPTION
FROM	TO	
265.5	277.0	Syenite? dark grey, basic, few small qtz. & cal. filled fractures, barren, minor py. 275.4 - 277.0, 3% - 5% py.
277.0	278.7	Lamprophyre Dyke? altered, carbonatized, abundance of dark lathlike phenocrysts, barren
278.2	281.5	Greywacke? greyish, slightly tuffaceous, bedding @ 50°, barren, minor py.
281.5	284.0	Syenite? grey-grey-brown, altered, brecciated backed, traces of py.
284.0	287.0	Basic Tuff; bedding @ 75° C.A.
287.0	300.8	Greywacke; greyish, tuffaceous appearance in places, barren-minor py. 296.2 - 300.8, dark green, chloritic, slight tuffaceous appearance, barren.
300.8	303.5	Syenite? dark greyish, basic, traces of py. as anpve (265.5 - 275.4)
303.5	308.8	Aplite Dyke? creamy grey - faintly pinkish, minor - 2% py. in places.

TOTAL DEPTH
 WORKING PLACE
 SECTION
 LOGGED BY
 DATE FINISHED

CO-ORDINATES COLLAR
 LAT. N— DEP. E—
 TO COLLAR
 BEARING
 ANGLE

DIP
 AT
 AT
 AT

CORE FOOTAGE		DESCRIPTION
FROM	TO	
308.8	322.0	Greywacke? grey-green, bedding faint, 65° C.A., 2%-3% py. 313.5 - 322.0, dark green, highly chloritic, andesitic appearance, barren.
322.0	324.0	Graphitic Tuff; minor py.
324.0	329.2	Greywacke? as above (313.5 - 322.0)
329.7	331.8	Lamprophyre Dyke? light creamy green, altered, carbonatized, barren
331.8	335.8	Greywacke? abundant reddish brown alteration, minor -2% py.
335.8	336.3	Basic intrusive? contact sharp.
336.3	338.8	Lamprophyre Dyke;
338.8	340.1	Basic Tuff;
340.1	352.1	Lamprophyre Dyke? as above (322.2 - 331.8)
352.1	354.8	Basic Tuff; 1½" section with 20% irregular qtz. @ upper contact.

TOTAL DEPTH
 WORKING PLACE
 SECTION
 LOGGED BY
 DATE FINISHED

CO-ORDINATES COLLAR
 LAT. N— DEP. E—
 TO COLLAR
 BEARING
 ANGLE

DIP T
 AT
 AT
 AT

CORE FOOTAGE		DESCRIPTION
FROM	TO	
354.8	362.0	Syenite? greyish-grey brown, fine-med. grained appearance, somewhat basic few qtz. & calcite-filled fractures, traces of py. @ 355.0, 3/4" qtz., barren @ 360.6, 2" qtz. with graphite, barren.
362.0	363.8	Greywacke? grey-green, bedding faint, 65° C.A.
363.8	367.2	Graphitic Tuff; bedding 70° C.A.
317.7	368.7	Lamprophyre Dyke? as above (329.2 -331.8)
368.7	375.5	Basic Tuff; @ 371.7, 5" inclusion lamprophyre @ 322.4, 4" " " "
375.5	379.4	Lamprophyre Dyke; as above (329.2-331.8)
379.4	395.0	Chlorite Zone; black, tuffaceous in places, bedding 75° C.A.
	395.0	End of Hole.