



REPORT ON
GEOLOGICAL SURVEY
RATTRAY TOWNSHIP, ONTARIO

RECEIVED

OCT 7 1982

MINING LANDS SECTION

I. INTRODUCTION

A geological survey was carried out during July, 1982 over lines cut in February of 1980. Results are shown on the enclosed plan.

II. LOCATION, ACCESS AND OWNERSHIP

The claims covered by the survey are located in the north-west corner of Rattray Township, District of Temiskaming, Ontario. They are numbered L476710 and L531358. They are recorded in the name of Superior Northwest Inc., P.O. Box 1110 Sault Ste. Marie, Ontario.

Access to the claims is by trails and geophysical lines from Highway 624 about 3 miles west of the claims from a point approximately 7 miles south of Larder Lake, Ontario.

III. PREVIOUS EXPLORATION

No previous work was noted on the two claims during the survey, and none is recorded in the office of the Provincial Geologist.

IV. TOPOGRAPHY

The major part of the property is covered by Pleistocene drift, gravel and swamp. Rocky hills up to 20 feet above the surrounding area with fair to good rock exposure occur in a few areas. A large part of the claims are covered with drift, swamp or beaver ponds with scattered very small outcrops in some

Topography (Continued)

of the higher areas. The two claims are covered with a mixture of mature birch, spruce, poplar and occasional maple with a fairly dense second growth in open spaces, and black spruce in the more swampy parts. A number of beaver ponds or now dry beaver meadows cover many of the stream courses.

V. SURVEY PROCEDURE

A grid line was laid out across the property with a baseline running at an azimuth of about 345° across the property. Crosslines were cut perpendicular to the baseline at 400-foot intervals. The picket lines were marked with fluorescent red paint for easier observation. Trial lines were run east and west from the picket lines by pace and compass in search of poorly exposed outcrop. All outcrops were noted in a field book as to rock type and distance from picket lines. This information was then plotted on a 1" = 400' scale plan.

VI. GEOLOGY

The general geology of Hearst and part of McFadden Townships has been described by J.E. Thomson ⁽¹⁾. McFadden and Rattray Townships were mapped by Z.L. Mandziuk ⁽²⁾ in 1978.

The claims are underlain by a volcanic sequence of rocks intruded by ultramafic to felsic intrusive rocks. Sediments, probably of the same relative age occur to the north and younger Huronian sediments overly the volcanic and intrusive

(1) O.D.M. Report Vol. 56 Part 8, 1947
(2) O.G.S. Report 204, 1980

Geology (Continued)

rocks to the east.

The volcanic rocks consist of tholeiitic to komatiitic basaltic rocks ranging in colour from grey to dark green to black. They are generally fine grained massive to pillowed flows. Light coloured felsic calcalkaline flows and tuffs are interbedded.

The intrusive rocks consist of a wide range of rock types. Lamprophyre and hornblendite occur as fairly large outcrop to small dykes. They are coarse grained and often occur in proximity to granitic or syenite bodies. Hornblendite is coarse to medium grained, dark green in colour consisting of about 60% hornblende and 40% plagioclase feldspar. The lamprophyre is predominately biotite with 10-20% hornblende and plagioclase feldspar. The granitic and syenitic rocks are light in colour fine to coarse grained consisting of plagioclase and microcline feldspar, quartz and 5-10% mafic minerals.

The sediments are greywacke often schistose and chloritized with interbedded argillite, and conglomerate bands.

The Huronian rocks largely lie off the property to the east.

VII. CONCLUSIONS

The geological survey shows a volcanic sequence of rocks intruded by felsic to ultramafic intrusives. No economic mineralization was noted but the geology is similar to other locations in the Larder Lake area where gold mineralization has been found.

Respectfully submitted



October 1, 1982

R.A. MacGregor, P. Eng.

CERTIFICATE

I, Robert A. MacGregor, certify:

1. I am a Mining Engineer residing at 134 Palace Drive, Sault Ste. Marie, Ontario. I have worked as a mining engineer and geologist for the past 17 years.
2. I am a member of the Association of Professional Engineers of the Province of Ontario and a member of the Canadian Institute of Mining and Metallurgy.
3. I attended Queen's University for two years in the Mining-Geology course.
4. I personally carried out or supervised the field work on the subject claims.

Oct 1/82
Date



McFadden Twp

Rattroy Twp

32N

28N

24N

20N

16N

12N

Geological Survey

Rattroy Twp.

Ontario

Scale 1" = 400'

Legend

Huronian

● Greywacke

Intrusives

● Granite

● Syenite

Volcanics

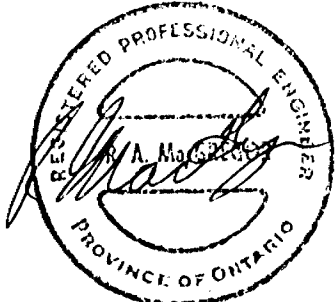
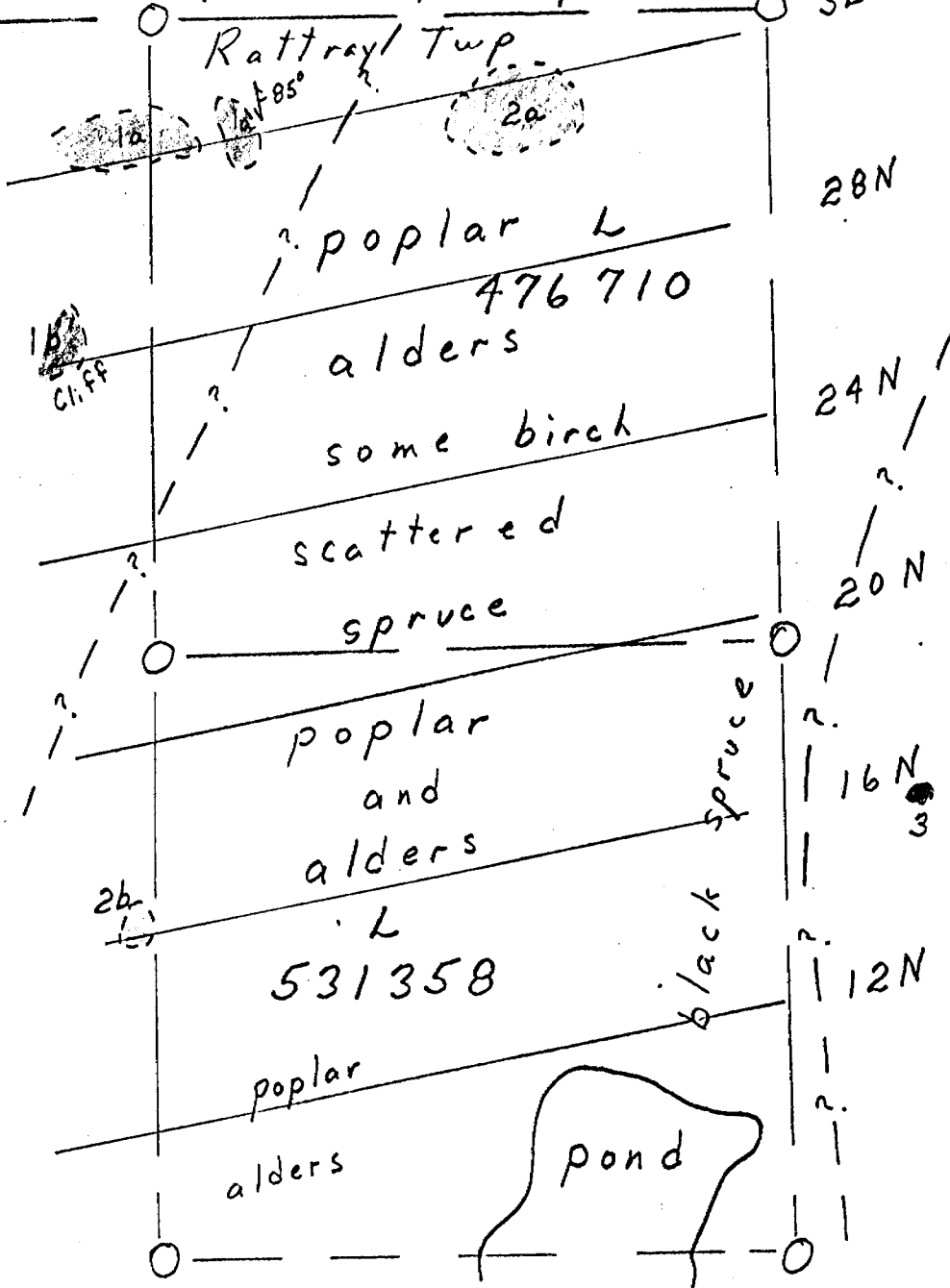
● Rhyolite

● Andesite

85° Strike and dip of schistosity

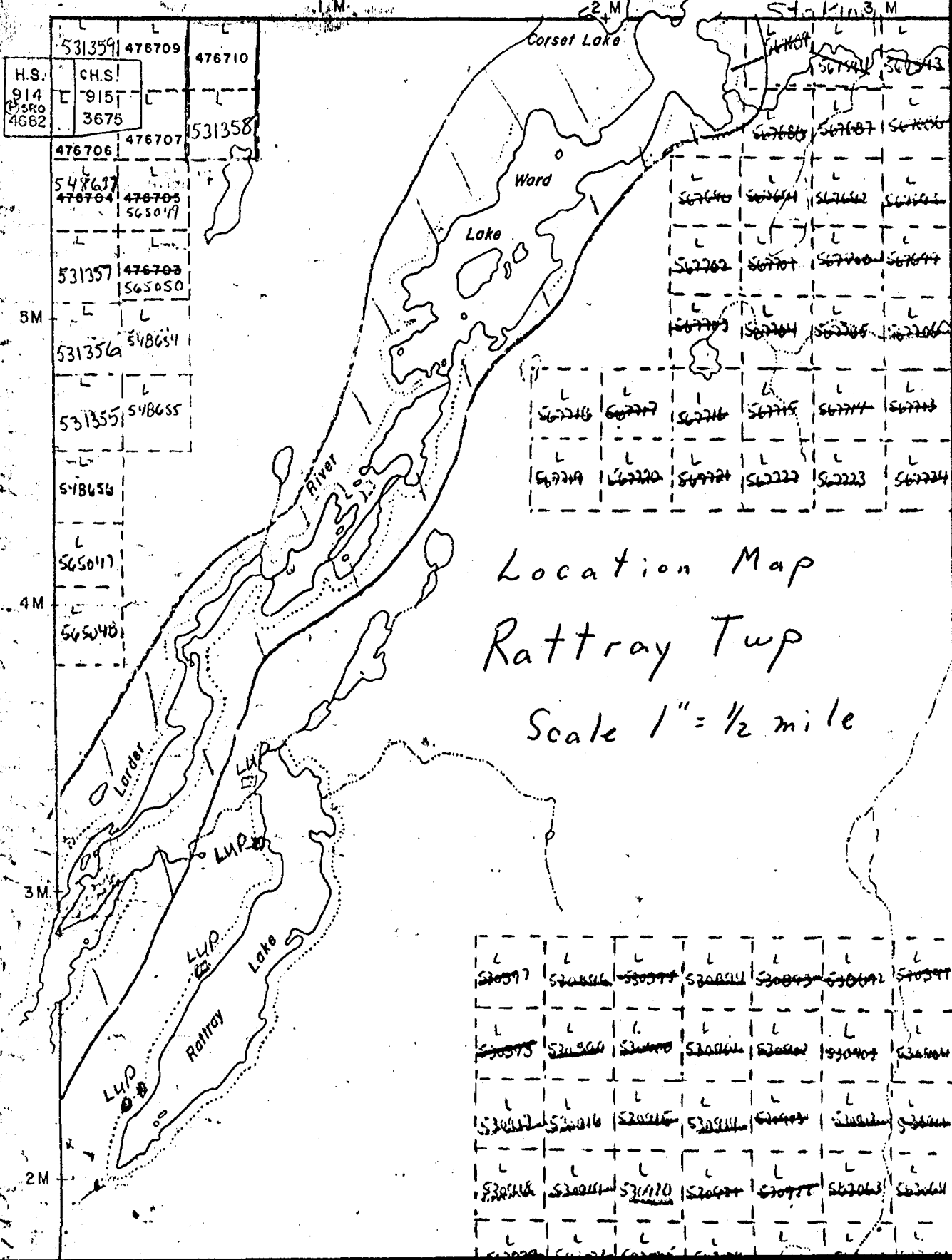
- - - ? - - - possible contact

○ outcrop area



McFadden Twp.

Park Reserve
withdrawn from
Staking 3 M



Location Map
Rattray Twp
Scale 1" = 1/2 mile

Skead Twp

530597	530598	530599	530600	530601	530602	530603
530604	530605	530606	530607	530608	530609	530610
530611	530612	530613	530614	530615	530616	530617
530618	530619	530620	530621	530622	530623	530624



32D04SE0322 2.5095 RATTRAY

900

1982 10 22

2.5095

Mining Recorder
Ministry of Natural Resources
4 Government Road East
P.O. Box 984
Kirkland Lake, Ontario
P2N 1A2

Dear Sir:

We have received reports and maps for a Geological Survey submitted under Special Provisions (credit for Performance and Coverage) on Mining Claims L 476710 et al in the Township of Rattray.

This material will be examined and assessed and a statement of assessment work credits will be issued.

Yours very truly

E.F. Anderson
Director
Land Management Branch

Whitney Block, Room 6450
Queen's Park
Toronto, Ontario
M7A 1W3
Phone: 416/965-1380

DW:sc

cc: Superior Northwest Inc
Sault Ste. Marie, Ontario

cc: Robert A. MacGregor
Sault Ste. Marie, Ontario



Mining Lands Comments

You wanted to see this file again

To: Geophysics

Comments

<input type="checkbox"/> Approved	<input type="checkbox"/> Wish to see again with corrections	Date	Signature
-----------------------------------	-------------------------------------------------------------	------	-----------

To: Geology - Expenditures

Mr. Kustra

Comments

<input checked="" type="checkbox"/> Approved	<input type="checkbox"/> Wish to see again with corrections	Date <i>Aug 11 / 83</i>	Signature <i>Kustra</i>
----------------------------------------------	-------------------------------------------------------------	----------------------------	----------------------------

To: Geochemistry

Comments

<input type="checkbox"/> Approved	<input type="checkbox"/> Wish to see again with corrections	Date	Signature
-----------------------------------	-------------------------------------------------------------	------	-----------

To: Mining Lands Section, Room 6462, Whitney Block. (Tel: 5-1380)

REGISTERED

July 14, 1983

2.5095

Superior Northwest Inc.
P.O. Box 1110
Sault Ste. Marie, Ontario
P6A 5N7

Attention: Robert MacGregor

Dear Sir:

RE: Geological Survey submitted on Mining Claims L476710
et al in the Township of Rattray

Enclosed is a copy of our letter dated April 19, 1983, requesting additional information for the above-mentioned survey.

Unless you can provide the required data by July 28, 1983, the mining recorder will be directed to cancel the work credits recorded on August 5, 1982.

For further information, please contact Mr. F.W. Matthews at (416) 965-1380.

Yours very truly,

E.F. Anderson
Director
Land Management Branch

Whitney Block, Room 6450
Queen's Park
Toronto, Ontario
M7A 1W3
Phone: (416)965-1380

S. Hurst:mc

Encl.

cc: Mining Recorder
Kirkland Lake, Ontario

1983 04 19

2.5095

Superior Northwest Incorporated
P.O. Box 1110
Sault Ste Marie, Ontario
Attention: Robert MacGregor.

Dear Sirs:

RE: Geological Survey submitted on Mining Claims
L 476710 et al in the Township of Rattray.

In order to complete your submission we require a geological plan showing:

- a) key map for the location of the property with respect to township boundaries or topographic features,
- b) claim lines and numbers, lot and concession lines, traverse lines, base lines and picket lines, topographic features,
- c) outcrop designated by colour and by a letter or number corresponding to the rock type as listed in the legend or table of formations,
- d) signature of geologist responsible for the work (author of report),
- e) scale and north direction, the scale not to exceed five hundred feet and not less than one hundred feet to the inch.

For further information, please contact Mr. F.W. Matthews at 416/965-1380.

Yours very truly,

E.F. Anderson
Director
Land Management Branch

Whitney Block, Room 6450
Queen's Park
Toronto, Ontario
M7A 1W3
Phone: 416/965-1380

R. Pichette:sc

cc: Mining Recorder
Kirkland Lake, Ontario



Jan 14/83

Mining Lands Comments

- no map

To: Geophysics

Comments

Approved Wish to see again with corrections Date Signature

To: Geology - Expenditures

W.R. Kuster

Comments

map required

Approved Wish to see again with corrections Date Feb 28/83 Signature *Chustre*

To: Geochemistry

Comments

LD

Approved Wish to see again with corrections Date Signature

To: Mining Lands Section, Room 6462, Whitney Block. (Tel: 5-1380)

GEOPHYSICAL TECHNICAL DATA

GROUND SURVEYS -- If more than one survey, specify data for each type of survey

Number of Stations _____ Number of Readings _____

Station interval _____ Line spacing _____

Profile scale _____

Contour interval _____

MAGNETIC

Instrument _____

Accuracy – Scale constant _____

Diurnal correction method _____

Base Station check-in interval (hours) _____

Base Station location and value _____

ELECTROMAGNETIC

Instrument _____

Coil configuration _____

Coil separation _____

Accuracy _____

Method: Fixed transmitter Shoot back In line Parallel line

Frequency _____
(specify V.L.F. station)

Parameters measured _____

GRAVITY

Instrument _____

Scale constant _____

Corrections made _____

Base station value and location _____

Elevation accuracy _____

INDUCED POLARIZATION
RESISTIVITY

Instrument _____

Method Time Domain Frequency Domain

Parameters – On time _____ Frequency _____

– Off time _____ Range _____

– Delay time _____

– Integration time _____

Power _____

Electrode array _____

Electrode spacing _____

Type of electrode _____