



REPORT OF THE MAGNETOMETER SURVEY  
MACGREGOR OPTION, SKEAD AND CATHERINE TWPS. ONTARIO

INTRODUCTION

A programme of magnetic surveying was carried out from October 24 to November 30, 1972 on the MacGregor Option claims in Skead and Catherine Townships. The claims are found on claim maps M387 and M336 in the Larder Lake Mining Division, District of Timiskaming, Ontario. The claims covered by this survey are L341819 to L341836.

The grid consists of lines which were cut, chained and picketed every 100 feet. Lines are generally in a north-south direction. The interval between lines is 400 feet. East-west tie lines have been cut with separations from 1200 feet to 2200 feet between tie lines. In all, 14.4 line miles of lines were cut on this grid.

GENERAL

The magnetic survey was carried out using a Scintrex MF1 fluxgate magnetometer. This magnetometer detects the vertical component of the earth's magnetic field to an accuracy of 10 gammas. Diurnal variations were controlled using the looping around technique using base stations on the baseline and tie lines as control. In this procedure the operator describes a loop in effect by reading a base station on a line at a baseline, taking readings along that line to the end, crossing to the next line, reading along that line to the opposite end, returning to the first line and reading back to the base station. Corrections are made in time on the intervening data on any changes occurring at the baseline reading. The operator then proceeds directly to the next line and repeats the procedure.

All magnetic readings were taken on a 50 foot interval. Both north-south lines and east-west base and tie lines were surveyed for a total production of 14.4 line miles.

DETAIL

Five west-northwest trending magnetic formations are defined in varying degrees on these claims. Peak amplitudes generally range between 2000 and 6000 gammas above local background. A series of ultrabasic bodies are seen as the source of the magnetic highs. These bodies range in width up to about 300 feet wide. Some flexing of the rocks is seen in places where the anomalies depart from straight line features. The ultrabasic rocks lie in rocks of generally uniform magnetic character.

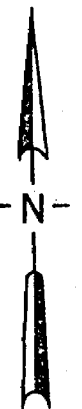
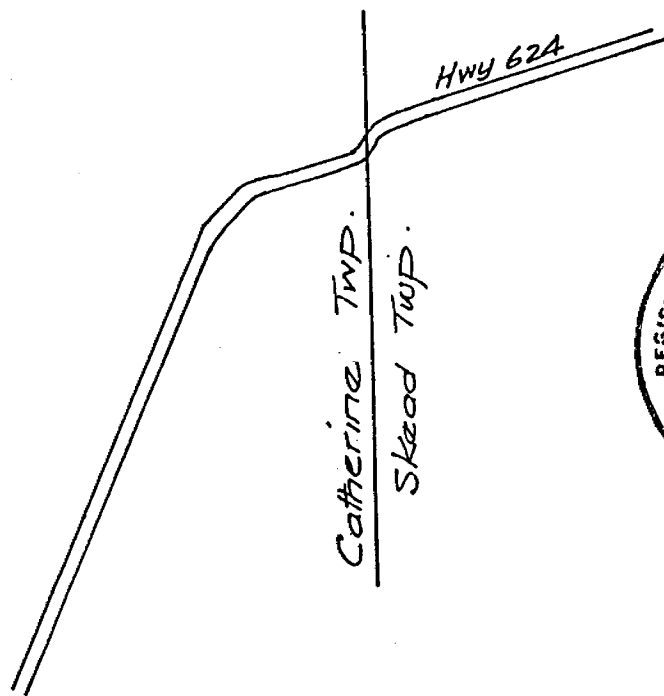
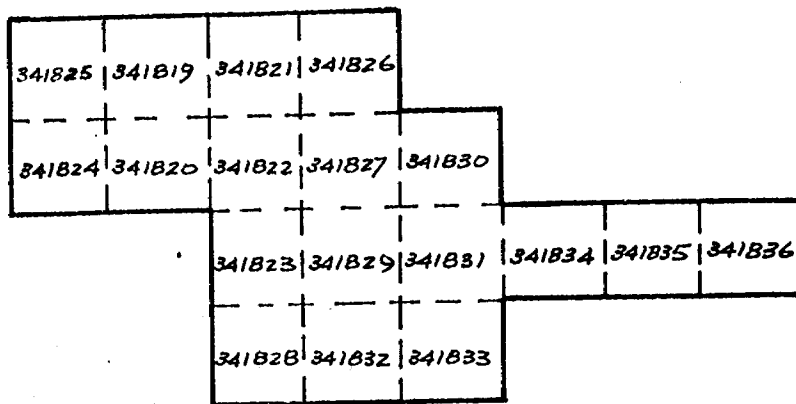
CONCLUSION

The magnetometer survey has outlined positions of five ultrabasic bodies lying through the claims in a west-northwest direction.

*Laurie Reed*  
Laurie Reed  
Chief Geophysicist.



October, 1973  
bb



*L. E. Reed*

Scale: 1" = 1/2 ml.

SELCO MINING CORP. LTD  
MACGREGOR OPTION.  
CLAIM MAPS M387 &

GEC



32D04SE0830 2.1316 SKEAD

900

file 2.1316

TO BE ATTACHED AS AN APPENDIX TO TECHNICAL REPORT  
FACTS SHOWN HERE NEED NOT BE REPEATED IN REPORT  
TECHNICAL REPORT MUST CONTAIN INTERPRETATION, CONCLUSIONS ETC.

RECEIVED

OCT 4 - 1973

PROJECTS SECTION

Type of Survey Ground Magnetometer

Township or Area \_\_\_\_\_

Claim holder(s) R.A. MacGregor

134 Palace Drive, Sault Ste. Marie

Author of Report L.E. Reed

Address 6th Floor, 55 Yonge St., Toronto, Ont.

Covering Dates of Survey March - April 1973  
(linecutting to office)

Total Miles of Line cut 14.4 line miles

MINING CLAIMS TRAVERSED  
List numerically

L	341819
(prefix)	(number)
L	341820
L	341821
L	341822
L	341823
L	341824
L	341825
L	341826
L	341827
L	341828
L	341829
L	341830
L	341831
L	341832
L	341833
L	341834
L	341835
L	341836

*2 covered 20 days*

*except*

*gj*

If space insufficient, attach list

SPECIAL PROVISIONS  
CREDITS REQUESTED

DAYS  
per claim

- Geophysical
- Electromagnetic \_\_\_\_\_
- Magnetometer 40
- Radiometric \_\_\_\_\_
- Other \_\_\_\_\_
- Geological \_\_\_\_\_
- Geochemical \_\_\_\_\_

ENTER 40 days (includes line cutting) for first survey.

ENTER 20 days for each additional survey using same grid.

AIRBORNE CREDITS (Special provision credits do not apply to airborne surveys)

Magnetometer \_\_\_\_\_ Electromagnetic \_\_\_\_\_ Radiometric \_\_\_\_\_  
(enter days per claim)

DATE: Oct 2 1973 SIGNATURE: Laurie Reed  
Author of Report or Agent

PROJECTS SECTION

Res. Geol. 63.1310 (divisions) Qualifications 2.62

Previous Surveys 63.193 performed 1950 geological

63.1097 performed 1961 Eng geological

Checked by L.E. date \_\_\_\_\_

GEOLOGICAL BRANCH \_\_\_\_\_

Approved by \_\_\_\_\_ date \_\_\_\_\_

GEOLOGICAL BRANCH \_\_\_\_\_

Approved by \_\_\_\_\_ date \_\_\_\_\_

TOTAL CLAIMS 18

OFFICE USE ONLY

Show instrument technical data in each space for type of survey submitted or indicate "not applicable"

## GEOPHYSICAL TECHNICAL DATA

### GROUND SURVEYS

Number of Stations 1520 Number of Readings 1520  
Station interval 50 feet  
Line spacing 400 feet  
Profile scale or Contour intervals \_\_\_\_\_  
(specify for each type of survey)

### MAGNETIC

Instrument Scintrex MF1  
Accuracy - Scale constant 10 gammas  
Diurnal correction method variations in base readings corrected for drift in time  
Base station location Series of bases on base and tie-lines are tied together during survey

### ELECTROMAGNETIC

Instrument \_\_\_\_\_  
Coil configuration \_\_\_\_\_  
Coil separation \_\_\_\_\_  
Accuracy \_\_\_\_\_  
Method:  Fixed transmitter  Shoot back  In line  Parallel line  
Frequency \_\_\_\_\_  
(specify V.L.F. station)

Parameters measured \_\_\_\_\_

### GRAVITY

Instrument \_\_\_\_\_  
Scale constant \_\_\_\_\_  
Corrections made \_\_\_\_\_  
Base station value and location \_\_\_\_\_

Elevation accuracy \_\_\_\_\_

### INDUCED POLARIZATION -- RESISTIVITY

Instrument \_\_\_\_\_  
Time domain \_\_\_\_\_ Frequency domain \_\_\_\_\_  
Frequency \_\_\_\_\_ Range \_\_\_\_\_  
Power \_\_\_\_\_  
Electrode array \_\_\_\_\_  
Electrode spacing \_\_\_\_\_  
Type of electrode \_\_\_\_\_

Hearst Twp. M.354

THE TOWNSHIP OF

**SKEAD**

DISTRICT OF  
TIMISKAMING

LARDER LAKE  
MINING DIVISION

SCALE: 1-INCH=40 CHAIN

LEGEND

- PATENTED LAND
- CROWN LAND SALE
- LEASES
- LOCATED LAND
- LICENSE OF OCCUPATION
- MINING RIGHTS ONLY
- SURFACE RIGHTS ONLY
- ROADS
- IMPROVED ROADS
- KING'S HIGHWAYS
- RAILWAYS
- POWER LINES
- MARSH OR MIRE
- MINES
- CANCELLED

NOTES

400' Surface rights reservation along all rivers.

All unpatented claims accepted subject to survey, Section 11B of the Mining Act.

Con. line between Con. II & Con. III, Lot 3 shown north of the actual position as laid out on the ground.

MINING LANDS -  
DATE OF ISSUE  
OCT 5 1973  
MINISTRY  
OF NATURAL RESOURCES

PLAN NO. - **M.387**

ONTARIO  
MINISTRY OF NATURAL RESOURCES  
SURVEYS AND MAPPING BR.

Colborne Twp. M.336

Ratray Twp. M.384

VI

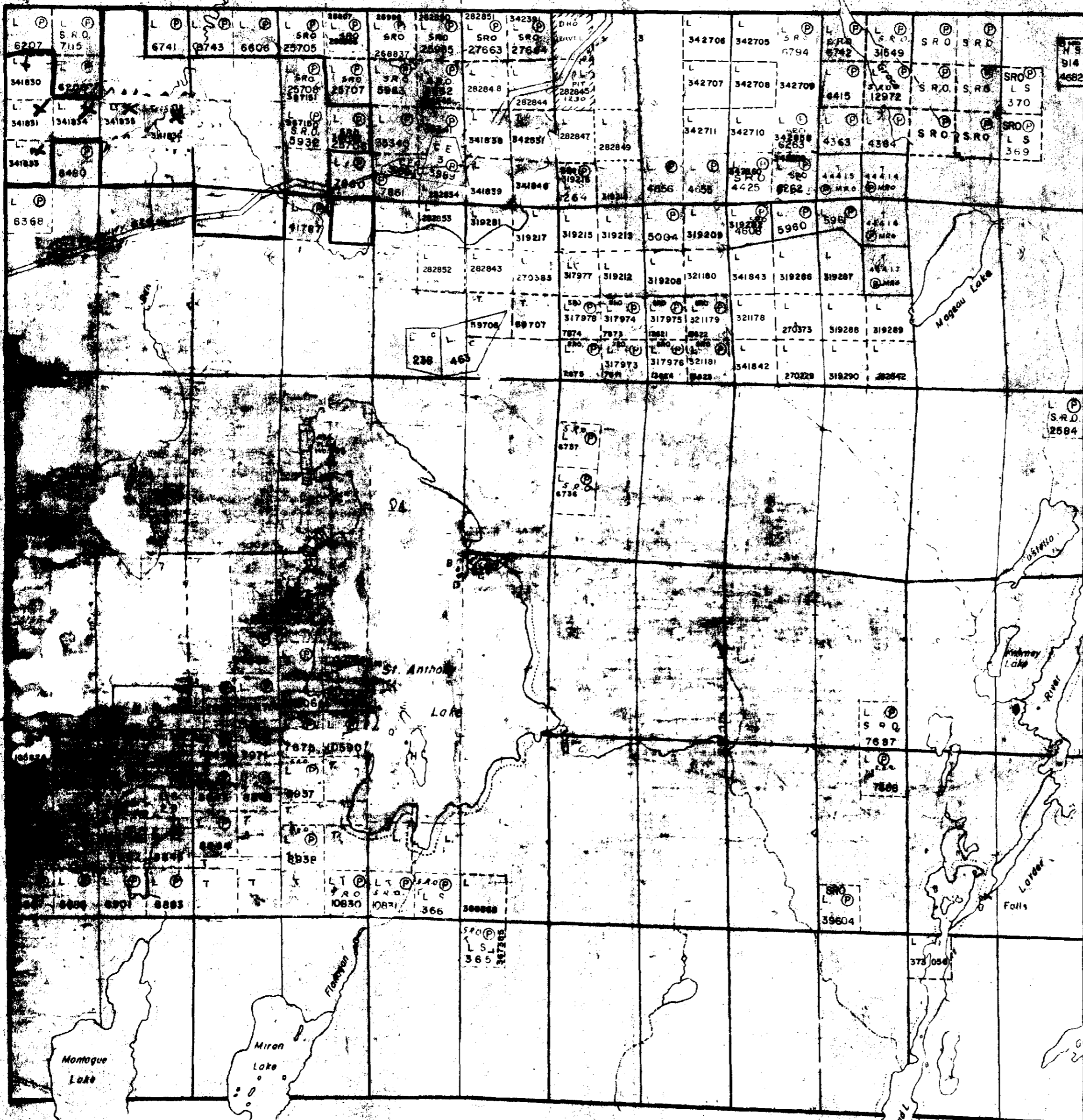
V

IV

III

II

I



1 2 3 4 5 6 7 8 9 10 11 12

Bayly Twp. M.323



320045E0630 2.1316 SKEAD

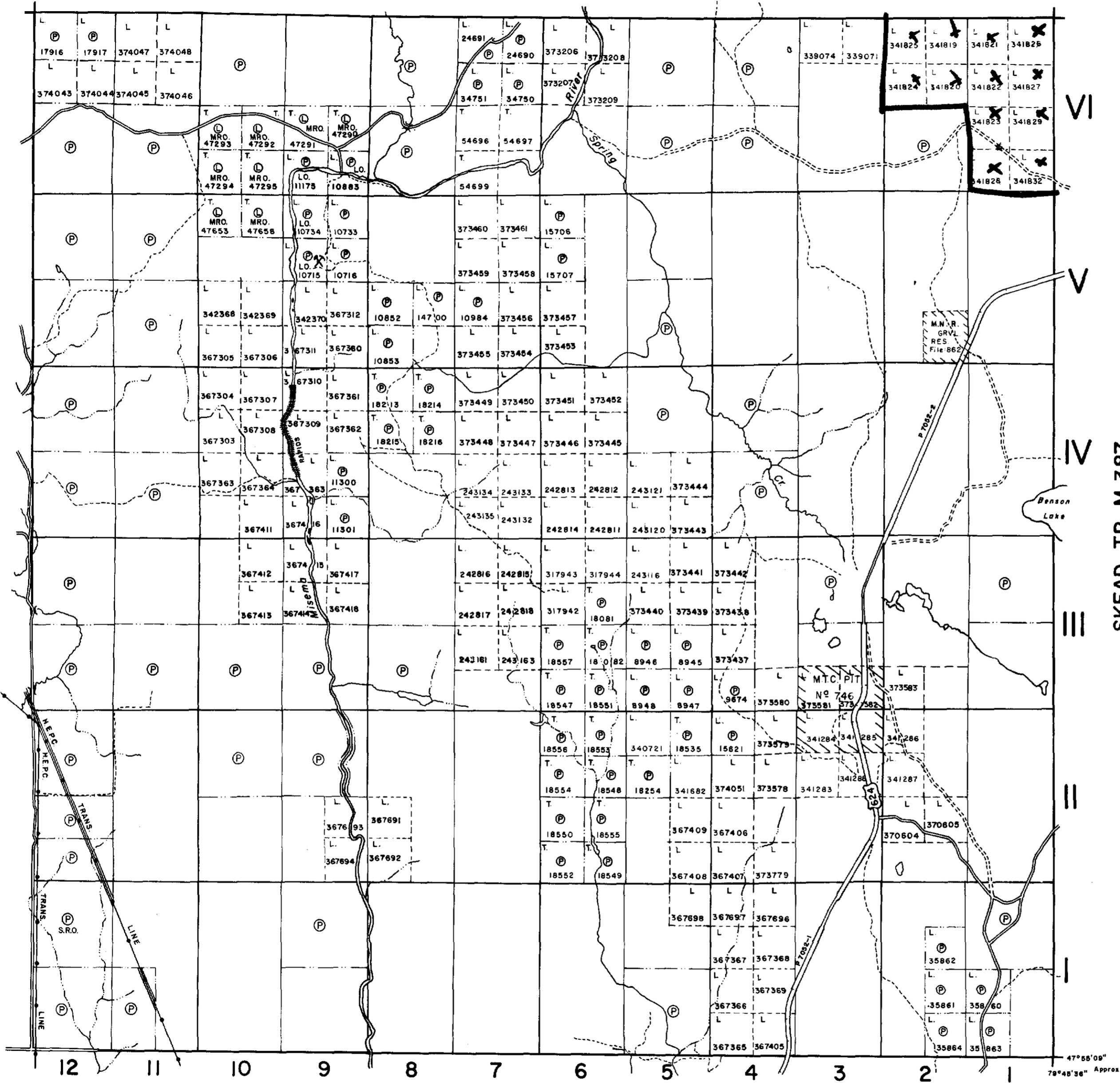
McELROY TP M.366

NOTES

400' surface rights reservation along the shores of lakes and rivers.

PACAUD TP. M.380

SKEAD TP. M.387



MINING LANDS  
DATE OF ISSUE  
OCT 5 1973  
MINISTRY OF NATURAL RESOURCES

LEGEND

- PATENTED LAND (P or ●\*)
  - PATENTED FOR SURFACE RIGHTS ONLY (●\*)
  - LEASE (L)
  - LICENSE OF OCCUPATION (L.O.)
  - CROWN LAND SALES (C.S.)
  - LOCATED LAND (Loc.)
  - CANCELLED (C.)
  - MINING RIGHTS ONLY (M.R.O.)
  - SURFACE RIGHTS ONLY (S.R.O.)
  - HIGHWAY & ROUTE NO. (17)
  - ROADS (—)
  - TRAILS (---)
  - RAILWAYS (—+—)
  - POWER LINES (—+—+—)
  - MARSH OR MUSKEG (—+—+—)
  - MINES (X)
- \*used only with summer resort locations or when space is limited

TOWNSHIP OF  
**CATHARINE**  
DISTRICT OF  
TIMISKAMING  
LARDER LAKE  
MINING DIVISION

SCALE : 1 INCH = 40 CHAINS (1/2 MILE)

DR. K.K.I.  
DATE JUNE '78 PLAN NO. **M.336**

ONTARIO  
MINISTRY OF NATURAL RESOURCES  
SURVEYS AND MAPPING BRANCH

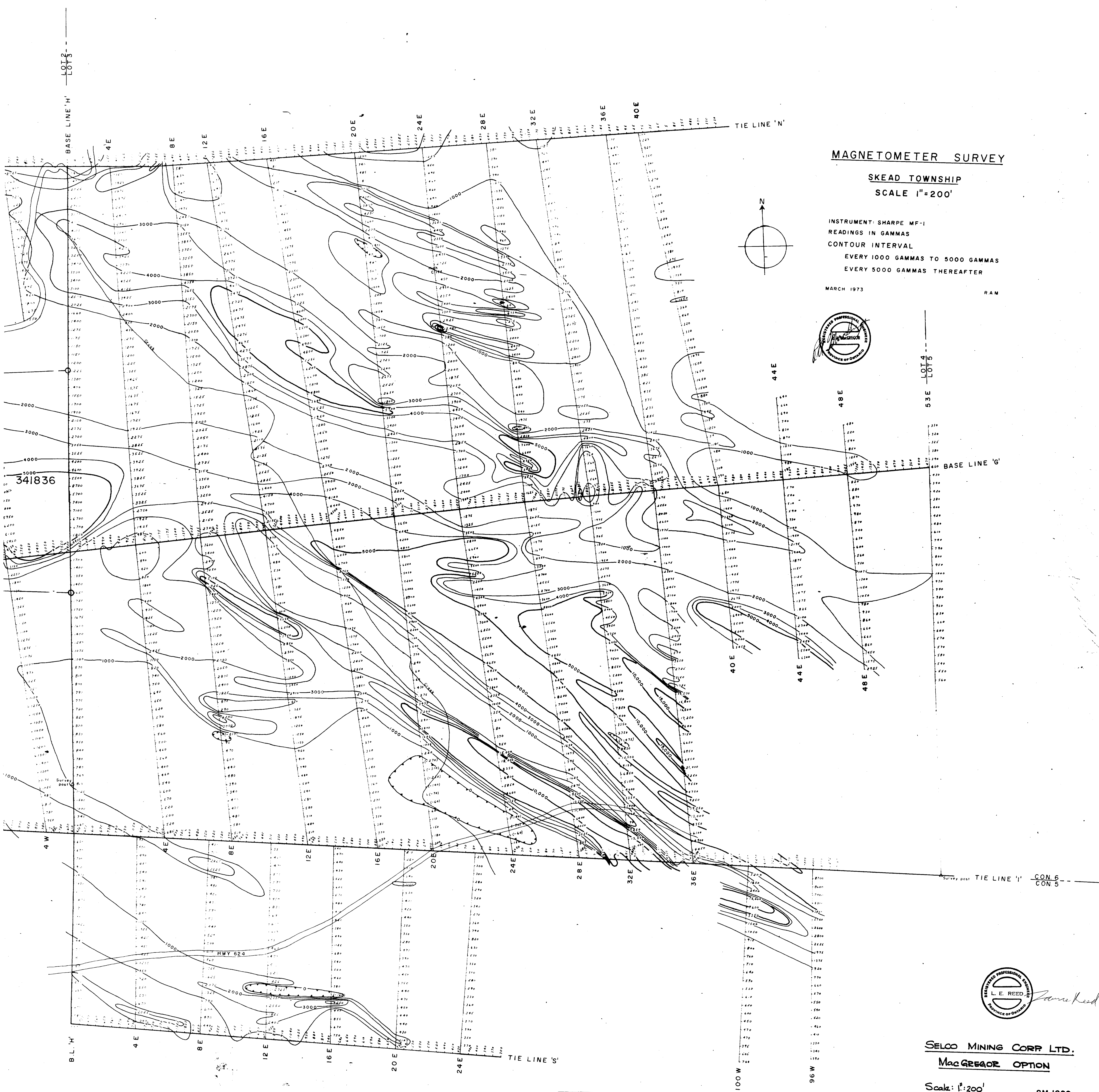
MARTER TP. M.543

2.1316



32004SE0030 2.1316 SKEAD



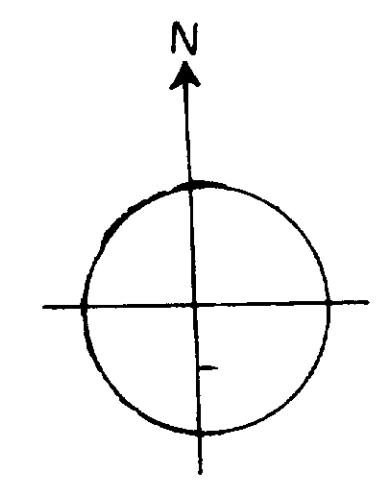


**MAGNETOMETER SURVEY**  
**SKEAD TOWNSHIP**  
**SCALE 1"=200'**

INSTRUMENT: SHARPE MF-1  
 READINGS IN GAMMAS  
 CONTOUR INTERVAL  
 EVERY 1000 GAMMAS TO 5000 GAMMAS  
 EVERY 5000 GAMMAS THEREAFTER

MARCH 1973

RAM



LOT 4  
 LOT 5

BASE LINE 'G'

TIE LINE 'I' CON. 6  
 CON. 5



**SELCO MINING CORP. LTD.**  
**MacGREGOR OPTION**

Scale: 1"=200'

SM 1029



**MAGNETOMETER SURVEY**

SKEAD & CATHERINE TOWNSHIPS

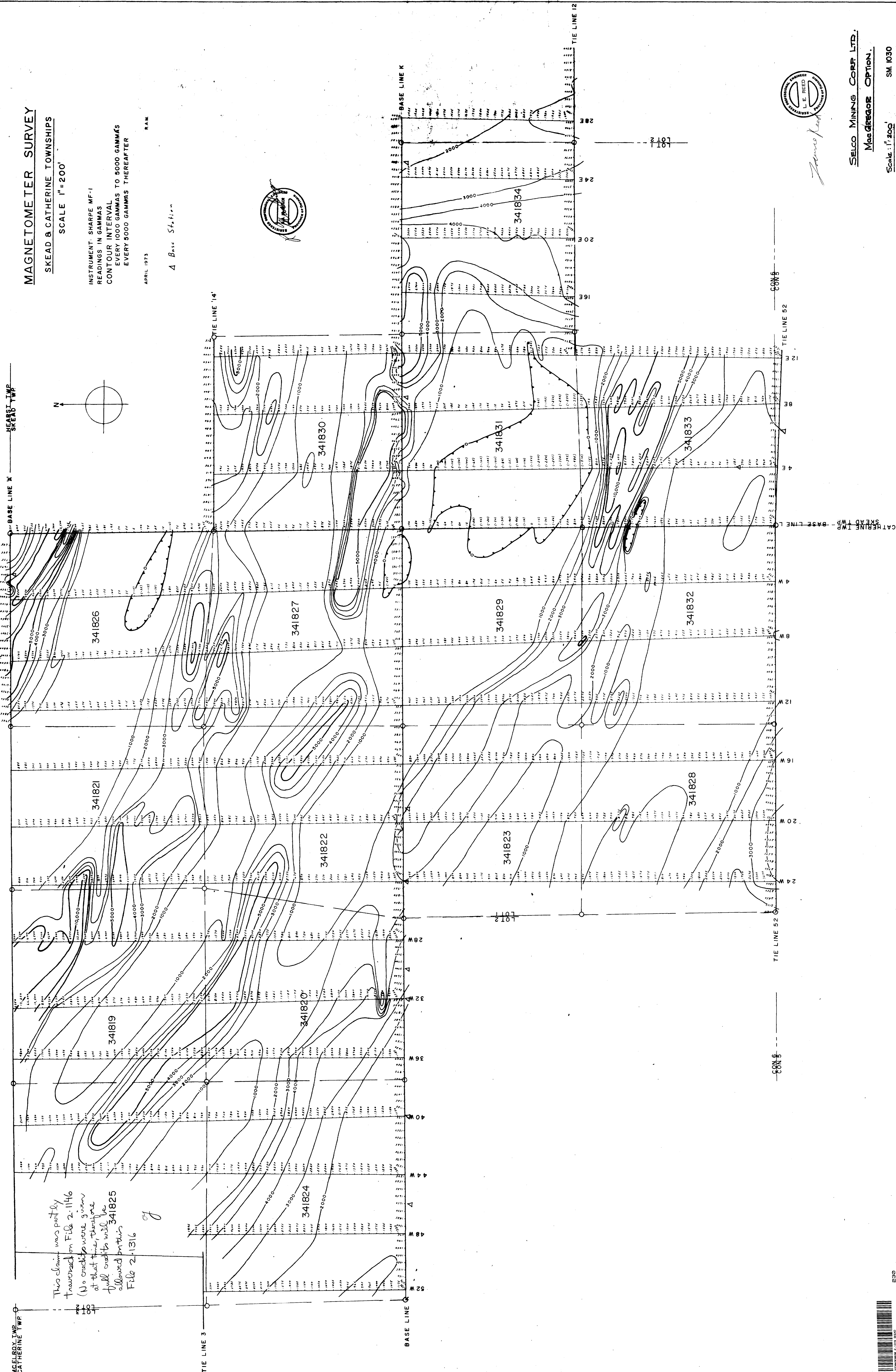
SCALE 1"=200'

INSTRUMENT SHARPE MF-1  
READINGS IN GAMMAS  
CONTOUR INTERVAL  
EVERY 1000 GAMMAS TO 5000 GAMMAS  
EVERY 5000 GAMMAS THEREAFTER

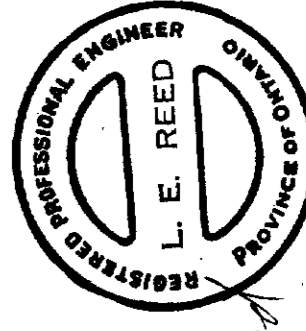
APRIL 1973

R.A.M.

Δ Base 5% ft.±



This claim was partly  
traversed on File 2-1146  
(No credits were given  
at that time, therefore  
full credits will be  
allowed on this 341825  
File 2-1316



*James [unclear]*





