



32D04SW0065 15 GAUTHIER

010

Diamond Drilling

Township of GAUTHIER

Report N<sup>o</sup> 15

Work performed by: Mayfair Mines

Claim N <sup>o</sup>	Hole N <sup>o</sup>	Footage	Date	Note
L 373800	M76-1	667.0'	July/76	(1) (2) (3)
	M76-2	697.0'	July/76	(3)
	M76-3	102.0'	July/76	(3)
L 373810	M76-3A	<u>479.0'</u>	July/76	(3)

Notes:

- (1) #167-76
- (2) #184-76
- (3) # 75-77

PROPERTY MAYFAIR MINES LIMITED

Claim L. 373810  
 LOCATION: 480' West and 250'  
 LATITUDE: south of #1 Post  
 DEPARTURE: \_\_\_\_\_  
 ELEVATION: 11W 2 + 005

STRIKE: N 30° E  
 DIP: - 50°  
 DATE DRILLED: 2 - 5 July, 1976

HOLE No. M76-1

PAGE No. 1

PURPOSE: To check values of drilling in 1930's

FOOTAGE	DESCRIPTION	SAMPLE NO.	WIDTH	ASSAY VALUE
0 - 66	CASING			
66 - 79	BASIC VOLCANICS fine grained, dark green, minor scattered pyrite	74 - 76 40356 76 - 78 40357	2' 2'	Nil Nil
79 - 83	TUFF Mafic tuff with dark red (syenitic) elongated narrow (1 cm wide) fragments - a little pyrite bedded 60 - 70°/core			
83 - 95	MAFIC UNIT possibly an intrusive - uniform appearance still, med. grained, black-grey, weakly magnetic, scattered pyrite - medium hardness			
95 - 98	ULTRAMAFIC FLOW soft talcose			
98 - 109	MAFIC UNIT as 83-95 possibly intrusive sill - medium hardness, scattered pyrite			
109 - 110	INTERFLOW MATERIAL? f.g., med. hardness, banding 80°/core			
110 - 115	MAFIC UNIT as 83-95 & 98-109	103 - 106 40358 108 - 109 40359	3.0 1.0	Nil Nil
115 - 118	SOFT TALCOSE possible ultramafic or interflow sediment	110 - 111 40360	1.0	Nil
118 - 124	As 83-95 & 98-109			
124 - 129	SOFT TALCOSE possible ultramafic as 115-118	127.5-129.5 40361	2.0	Nil
129 - 133	MAFIC UNIT possibly intrusive as 83-95 & 98-109	129.5 - 132 40362	2.5	Nil
133 - 138	SOFT TALCOSE possible ultramafic flow			
138 - 139	MAFIC UNIT as 83-95 & 98-109			
139 - 142	TALCOSE ROCK possible ultramafic			
142 - 147	MAFIC TO INTERMEDIATE FLOW OR SILL some silicification over 142-144 - ± 3% pyrite	142 - 145 40363 145 - 147 40364	2.0 2.0	Nil Nil
147 - 170	TALCOSE ROCK soft, black with much quartz & carbonate although does not effervesce readily. probably ultramafic	169 - 171 40365	2.0	.002
170 - 200	GREEN CARBONATE ROCK with prominent banding 20 - 50°/core and pink syenite dikes at 170-171 - fine grained much white quartz 180-184 f.g. cut by random quartz stringers - 3 to 5% pyrite	173 - 176 40366 180 - 184 40367	2.5 4.0	Nil .04
200 - 256	GRADATIONAL CONTACT to similar rock type but grey with some green - talcose, schistic probably an altered mafic volcanic now talc-chlorite schist			
- 273	foliated or bedded - 60°/core			
273 - 280	TRACHYTE FLOW pale pink, f.g., cut by qtz. stringers showing flow to breccia over about 15"			

DRILLED BY: Heath & Sherwood Drilling Ltd.

SIGNED

*[Handwritten Signature]*

L. J. Cunningham

PROPERTY MAYFAIR MINES LIMITED

Claim L.373810

HOLE No. M76-1

LOCATION: \_\_\_\_\_

LATITUDE: \_\_\_\_\_

DEPARTURE: \_\_\_\_\_

ELEVATION: \_\_\_\_\_

STRIKE: \_\_\_\_\_

DIP: \_\_\_\_\_

DATE DRILLED: July 1976

PAGE No. 2

PURPOSE: \_\_\_\_\_

FOOTAGE	DESCRIPTION	SAMPLE NO.	WIDTH	ASSAY VALUE
		273 - 275	40393	2.0 )
		275 - 277.5	40394	2.5 )
		277.5 - 280	40395	2.5 )
		280 - 283	40396	3.0 )
		283 - 286	40397	3.0 )
	Narrow zone of silicification and colour change adjoining qtz. veins			
286 - 295	TALC-CHLORITE SCHIST metamorphozed mafic tuffs 60-80°/core soft grey, some banding or bedding?			
295 - 298	DARK PURPLISH TRACHYTE TUFF OR FLOW	40398	3.0	NIL
298 - 312	Mixture of TALC CHLORITE SCHIST (metavolcanics) and thin TRACHYTIC TUFFS OR FLOWS suggested bedding 60-80°/core			
312 - 349	TALC-CHLORITE SCHIST pale grey banded from parallel to 50°/core			
349 - 410	322 - 4" pink trachyte with 5% pyrite QTZ. FELDSPAR PORPHYRY pink to flesh to purplish colour Distinct flesh coloured (whitish) phenocrysts No chilling at contacts maybe a porphyritic trachyte flow			
410 - 435	TALC-CHLORITE SCHIST (metavolcanic) with 5% trachytic material included bedding or banding 60 - 80°/core			
435 - 475	MIXTURE with trachytic material predominating with some mafic gabbro flow? and some talc chlorite schist suggesting of bedding varying 30° to 60°/core Some sections appear gneissic, being mixture of pink materials & black ferromagnesian minerals with prominent banding			
	455-458 mineralized trachyte	40399	3.0	Nil
475 - 496	TALC-CHLORITE SCHIST			
496 - 520	MAFIC ROCK foliated gabbroic flow black to faint brownish red cast - 60°/core			
520 - 525	TALC CHLORITE SCHIST			
525 - 534	TRACHYTIC ROCK not too unlike 496-524 but more pink in colour but still large percentage of ferromagnesian minerals possibly a mixture of trachyte & mafic tuff foliated - 70°/core			
	525 - 528	40155	3.0	Nil
	528 - 531	40156	3.0	Nil
	531 - 534	40157	3.0	Nil
534 - 600	MIXTURE 70% TALC CHLORITE SCHIST (metavolcanic) and 30% TRACHYTIC TUFF (gneissic in appearance) foliated 70°/core			
600 - 609.5	MIXTURE 90% TRACHYTIC ROCKS & 10% MAFIC ROCK Some pyrite			
	600 - 603	40158	3.0	.005
	603 - 606	40159	3.0	.002
	606 - 609	40160	3.0	.002

DRILLED BY: \_\_\_\_\_

SIGNED: *R. Cunningham*

PROPERTY MAFAIR MINES LIMITED

Claim I. 373810

HOLE No. 176-1

LOCATION: \_\_\_\_\_

LATITUDE: \_\_\_\_\_

DEPARTURE: \_\_\_\_\_

ELEVATION: \_\_\_\_\_

STRIKE: \_\_\_\_\_

DIP: \_\_\_\_\_

DATE DRILLED: July, 1976

PAGE No. 3

PURPOSE: \_\_\_\_\_

FOOTAGE	DESCRIPTION	SAMPLE NO.	WIDTH	ASSAY VALUE
609.5 - 621.5	PINK TRACHYTE (OR SYENITE?) massive, appears conformable			
621.5 - 629.5	MIXTURE 80% MAFIC TRACHYTE & 20% TALC CHLORITE SCHIST - the mafic trachyte appears gneissic - foliated or bedded 70 - 90°/core			
	Occasional sections porphyritic 2% pyrite			
	615.5 - 617.5	40161	2.0	.11
	617.5 - 619.5	40162	2.0	.04
	619.5 - 621.5	40163	2.0	.125
621.5 - 667	MIXTURE 80% MAFIC TRACHYTE & 20% TALC CHLORITE SCHIST - the mafic trachyte appears gneissic - foliated or bedded 70 - 90°/core			
	629 - 630.5	40164	1.5	.005
667	END OF HOLE			

NOTE: SLUDGE ALL NIL EXCEPT:

176-186	.005
186 - 196	.004
196-206	.002
206-216	.005
216-226	.01
230-240	.002
240-250	.004

CORE SIZE AXT  
 STORED AT UPPER CANADA MINE SITE  
 DOBIE, ONTARIO.

DRILLED BY H & S Drilling

SIGNED [Signature]

PROPERTY MAYFAIR MINES LIMITED

Claim 373810

HOLE NO. 176-2

LOCATION: 650' N & 140' S of

LATITUDE: No. 1 Post

STRIKE: N 30° E

PAGE NO. 1

DEPARTURE: \_\_\_\_\_

DIP: 50°

ELEVATION: 1,612 + 00 S

DATE DRILLED: 15 - 20 July, 1976

PURPOSE: To test the westerly extension of zone of Hole M 76-1

FOOTAGE	DESCRIPTION	SAMPLE NO.	WIDTH	ASSAY VALUE
0 - 75	CASING			
75 - 120	Black, med. grained to coarse, uniform MAFIC ROCK may be basic syenite or syenitized volcanic Rich in ferromagnesian minerals, foliated, few pale pink syenite (f.g.) inclusions 96-99 lost water 50% LOST CORE @ 97 narrow 1 cm. qtz. calcite rusty bands - 90°/core appears intermediated with the following			
120 - 149	TALC-CHLORITE SCHIST very soft, light coloured grey rock with faint green cast showing banding (which may be bedding) 1 cm thick, alternately white to grey to dark - 20° to 45°/core Sections show small black spots 1 mm - 3 mm size, may be magnetite, rounded appearance - may be tuff 140-141 6" pink syenite dike - 30°/core fine & coarse pyrite	40368	6"	.002
149 - 159	TALC-CHLORITE SCHIST brecciated, heavily cut but qtz. carb. stringers veins & blobs increase in green colour; short sections approaching green carbonate rock			
159 - 170	TALC-CHLORITE SCHIST pale grey to pale green, cut by few qtz. carb. stringers 161-162 pale pink or buff coloured f.g. dike, fine pyrite 30°/core green carbonate developed from 168 - 170	40369	1.0	Nil
170 - 172	Pale pink SYENITE very little qtz. fracturing ± 1% pyrite	40370	2.0	Nil
172 - 174.5	Pink SYENITE f.g., uniform, a little pyrite	40371	2.5	Nil
174.5 - 181	Green carbonate - contorted - banding or bedding from parallel to 45°/core			
181 - 183	6" banded purple to pink to pale green syenite? 4" green (brecciated) carbonate 12" brecciated quartz, pink syenite, green carbonate, a little pyrite, becoming brownish in colour toward bottom of section 6" brecciated green carbonate	40372	2.0	Nil
183 - 185	Green carbonate			
185 - 193	F.G. pink Syenite cut by qtz. veins & stringers 185-187 5% fine pyrite 187-189 same 189-191 25% qtz. 191-193 foliated 45°/core colour varying from pale green to buff to pink to purple a little pyrite	40373 40374 40375	2.0 2.0 2.0	.055 .005 .005
193-200	Green carbonate cut by qtz. carb. veins - green colouring grading out into a grey talc chlorite schist - both types showing foliation at 30° to 45°/core	40376	2.0	.005

DRILLED BY: Heath & Sherwood Drilling

SIGNED: 

PROPERTY MAYFAIR MINES LIMITED

Claim L.373810

HOLE No. M 76-2

LOCATION: \_\_\_\_\_

LATITUDE: \_\_\_\_\_

DEPARTURE: \_\_\_\_\_

ELEVATION: \_\_\_\_\_

STRIKE: \_\_\_\_\_

DIP: \_\_\_\_\_

DATE DRILLED: July, 1976

PAGE No. 2

PURPOSE: \_\_\_\_\_

FOOTAGE	DESCRIPTION	SAMPLE NO.	WIDTH	ASSAY VALUE
200 - 272.5	TALC-CHLORITE SCHIST soft grey foliated or banded 30 to 50°/core			
272.5 - 295	CROSSLINE MAFIC ROCKS - foliated - basic syenite tuff? syenitized in varying degrees from narrow wyenite tongues, dikes to faint pink stringers & inclusions foliated from 10° to 60°/core			
	276.5-278.5 f.g. dense felsic dike a little pyrite	40377	2.0	Nil
	293-295 pink to black syenitized rock + 5% pyrite	40378	2.0	Nil
295 - 297	Same highly irregular syenitic stringers & veins	40379	2.0	Nil
297-299.5	same	40380	2.5	Nil
299.5 - 316	TALC-CHLORITE SCHIST (metavolcanics) with minor cross- line mafic flow or basic syenite			
316 - 329	MAFIC ROCK med. grained, uniform, black with grey speckles medium hardness			
329 - 331	TALC CHLORITE SCHIST			
331 - 333	PORPHYRITIC FELSIC DIKE dark, dense, fractured oxidized	40381	2.0	Nil
333 - 345	INTERMEDIATE & FELSIC FLOWS OR SILLS? dark grey, banded or bedding - 70°/core			
345 - 372	TALC CHLORITE SCHIST except 354-358 felsic tuff, light grey fragments in dark matrix, bedding 45° to parallel to core			
372 - 373	PORPHYRITIC SYENITE OR TRACHYTE appears conformable 45° to 60°/core at contacts	40382	1.0	Nil
373 - 378	MAFIC TUFF - 60°/90°/core			
378 - 387	SERIES OF SYENITE DIKES OR TRACHYTE FLOWS constituting 90% of the rock; fine pyrite - contacts 60°-70°/core			
	378 - 380	40383	2.0	Nil
	380 - 382	40384	2.0	Nil
	382 - 384.5	40385	2.5	Nil
	384.5 - 387	40386	2.5	Nil
387 - 401	MAFIC TUFF dark crossline, med. gr. as earlier sections foliated, densely packed trachyte fragments ± 1 cm. in dark matrix			
401 - 403.5	) Mineralized ± 3% pyrite	40387	2.5	.07
403.5 - 406	) fractured (qtz. carb. veins)	40388	2.5	.08
406 - 408.5	) syenite dike, chilled edges	40389	2.5	.04
408.5 - 463	MAFIC ROCK dark crossline as earlier section, foliated gabbro			
463 - 482	TALC CHLORITE SCHIST soft, grey foliated or bedded 45° to 70°/core			
482 - 508	ULTRAMAFIC FLOW? dark, f.g., massive rock, grading into talc chlorite schist at about 500			

DRILLED BY \_\_\_\_\_

SIGNED \_\_\_\_\_

*(Handwritten signature)*

PROPERTY MAYFAIR MINES LIMITED

Claim 1.373810

HOLE No. M76-2

LOCATION: \_\_\_\_\_

LATITUDE: \_\_\_\_\_

DEPARTURE: \_\_\_\_\_

ELEVATION: \_\_\_\_\_

STRIKE: \_\_\_\_\_

DIP: \_\_\_\_\_

DATE DRILLED: July, 1976

PAGE No. 3

PURPOSE: \_\_\_\_\_

FOOTAGE	DESCRIPTION	SAMPLE NO.	WIDTH	ASSAY VALUE
508 - 607	PIEDOMINANTLY GABBRO ROCKS as above; now thought to be coarse mafic flows (they appear conformable and contain short sections of talcose schisted mafic tuff at 60°/core and a 6" pink trachyte section at 540, mineralized with coarse & fine pyrite)	40390	0.5	Nil
607 - 637.5	TALC CHLORITE SCHIST light grey, sheared or foliated 60 - 70°/core			
637.5 - 642	SYENITE f.g., dense, uniform, dark purple grey, mineralized with 3% pyrite	637.5 - 640 640 - 642	2.5 2.0	Nil Nil
642 - 677	TALC CHLORITE SCHIST			
677 - 697	SYENITE, f.g. dense, purple 3% pyrite	677 - 679.5 679.5 - 682 682 - 684.5 684.5 - 687 687 - 689.5 689.5 - 692 692 - 694.5 694.5 - 697	2.5 2.5 2.5 2.5 2.5 2.5 2.5 2.5	Nil Nil Nil Nil Nil .002 .002 .005
697 - 700	TALC CHLORITE SCHIST			

CORE SIZE AX1  
CORE STORED AT Upper Canada Mine site  
DOBIE, ONT.

DRILLED BY H & S Drilling

SIGNED 

PROPERTY MAYFAIR MINES LIMITED

Claim L. 373810

HOLE No. 176-3

LOCATION: 830' W & 140' S of

LATITUDE: #1 Post

STRIKE: N 30° E

DEPARTURE: Grid location:

DIP: 50°

PAGE No. \_\_\_\_\_

ELEVATION: L 8 W - 2 + 00 S

DATE DRILLED: 21 - 22 July, 1976

PURPOSE: To test the westerly extension of Holes # 76-1 & 76-2

FOOTAGE	DESCRIPTION	SAMPLE NO.	WIDTH	ASSAY VALUE
0 - 71	CASING			
71 - 102	MAFIC SYENITE med. grained, dark, foliated, gabbroic in texture badly broken 20% LOST CORE 102 - hole abandoned, after hole entered overburden at 102 and rods stuck - ledge or huge boulder			
<p style="text-align: center;">CORE SIZE AX T</p> <p style="text-align: center;">- CORE ABANDONED AT DRILL SITE</p>				

DRILLED BY H & S Drilling

SIGNED

*L. J. Cunningham*  
 L. J. Cunningham, B.Sc., P.Eng.



PROPERTY Mayfair Mines Limited

Claim L. 373810

HOLE NO. M76-3A

LOCATION:

LATITUDE: 80° W & 20° S of #1

STRIKE: N 30° E

DEPARTURE: Post 373810

DIP: 50°

PAGE NO. \_\_\_\_\_

ELEVATION: Grid Location -

DATE DRILLED: 23 - 31 July, 1976

18W 1 + 75S

PURPOSE: To test the westerly extension of zone of holes M 76-1 & 76-2

FOOTAGE	DESCRIPTION	SAMPLE NO.	WIDTH	ASSAY VALUE
0 - 72	OVERBURDEN			
72 - 125	BASIC SYENITE - biotite rich rock, massive, uniform, dark, med. grained, called biotized ultra mafic by L. Jensen. 110 - 125 becoming more pinkish in colour and cast few inclusions one large 10 cm quartz feldspar inclusion			
125 - 145	MAFIC TUFF well bedded 30° - 45°/core with short sections of talc chlorite schist @ 140-142, 143-144			
145 - 178	TALC-CHLORITE SCHIST 152-158 2' Lost Core 154 1" pink syenite			
178 - 213	CARBONATE ZONE - weakly green in colour - random qtz. veins, crumbled and contoured 203-215 syenite rich zone syenite present as narrow dikes 1" - 2" wide or as large bombs and as a tuff pinkish in colour bedded 45°/core 207-212 100% syenite tuff & few qtz. stringers, fine pyrite ± 3% 222 - 2" pink syenite dike? foliated may be trachytic tuff conformable & 60°/core			
213 - 230	TALC CHLORITE SCHIST			
230 - 262	TRACHYTE RICH TUFF bedded 30° - 45°/core some fine bedded tuff but some of lapilli & agglomeratic size Colour pink to flesh Narrow sections mineralized with coarse & fine pyrite ± 3% Few narrow sections of T.C. schist @ 235-238			
262 - 269	FELDSPAR PORPHYRY dark flesh to buff coloured rock, numerous fine 1 mm - 3 mm feldspar phenocrysts, sharp contacts - 60°/core 1-2% pyrite			
269 - 276	TUFF - MASSIVE TUFF flesh coloured TRACHYTIC fragments in dark matrix bedding 45° - 30°/core			
276 - 281	TALC CHLORITE SCHIST			
281 - 292	FAULT ZONE - 50% Lost Core or Talc Chlorite Schist balance soft crumpled, broken T.C. schist			
292 - 302	TUFF syenitic rich, indistinct bedding - 60°/core with 2 only 6" buff coloured siliceous dikes or conformable flows with sharp contacts, fine grained pyrite 2 - 3%			
302 - 357	ALTERED ULTRAMAFIC dark grey, uniform, weakly magnetic, massive, talcose rock. Occ. short sections of coarse pyrite mineralization dark grey, usually soft, black portion usually hard.			
357 - 371	351-355 Two f.g. grey siliceous dikes with coarse pyrite, sharp contacts contacts approx. 45°/core			
371 - 371	ALTERED ULTRAMAFIC black, soft, talcose, magnetic			

DRILLED BY Heath & Shearwood Drilling

SIGNED 

PROPERTY Mayfair Mines Limited

Claim I373810

HOLE No. K76-3A

LOCATION: \_\_\_\_\_

LATITUDE: \_\_\_\_\_

DEPARTURE: \_\_\_\_\_

ELEVATION: \_\_\_\_\_

STRIKE: \_\_\_\_\_

DIP: \_\_\_\_\_

DATE DRILLED: July, 1976

PAGE No. 2

PURPOSE: \_\_\_\_\_

FOOTAGE	DESCRIPTION	SAMPLE NO.	WIDTH	ASSAY VALUE
371 - 386	MAFIC SYENITE dark pinkish cast with large & small inclusions of mafic to felsic composition 382-384 mineralized pink section † 2% pyrite			
386 - 390	ALTERED ULTRAMAFIC black soft talcose			
390 - 395	MAFIC SYENITE as above			
395 - 401	FELDSPAR PORPHYRY coarse whitish phenocrysts up to 1 cm size in grey matrix, fresh unaltered rock			
401 - 408	TALC - CHLORITE SCHIST altered ultramafic?			
408 - 425	MAFIC SYENITE dark, uniform, med. grained rock few apparent inclusions? with short sections of thin ultramafic flow or mafic tuffs 30° - 45°/core			
425 - 428	MAFIC SYENITE TUFF			
428 - 449	TALC-CHLORITE SCHIST with a few short 1-2 cm. of mafic syenite tuff 50°-60°/core apparently conformable			
449 - 455	SYENITIC TUFF - lapilli size, - flesh coloured, distorted, elongated fragments in a dark matrix			
455 - 462	MIXTURE Soft pelitic banded sediment & hard syenitic tuff - 30°-45°/core			
462 - 479	TRACHYTE TUFF grey to flesh coloured fragments in dark matrix foliated or bedded 30°/core fine pyrite 1 - 3%			

DRILLED BY H & S Drilling

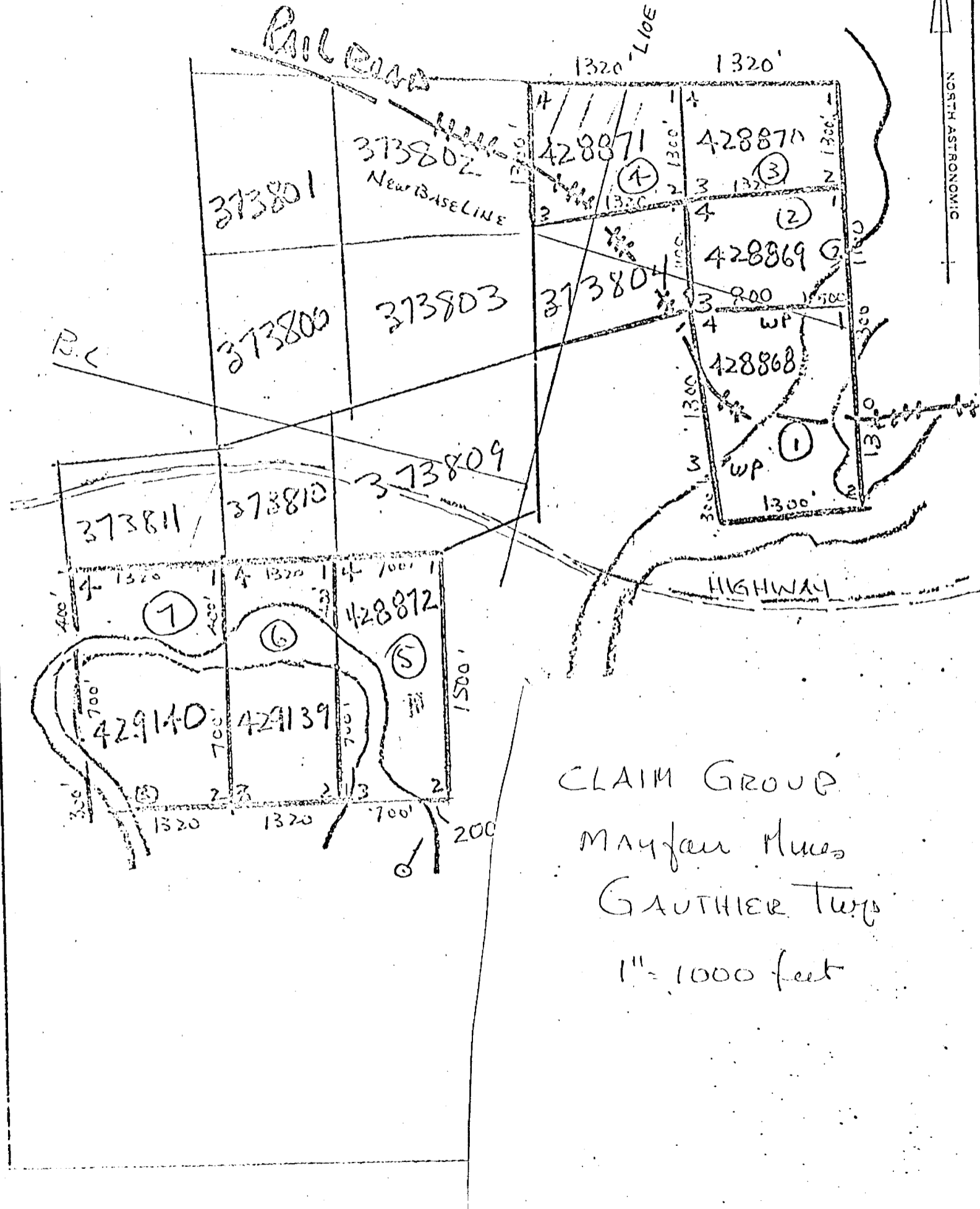
SIGNED

*L. J. Cunningham*

L. J. Cunningham B.Sc. P. Eng.



# GAUTHIER TWP

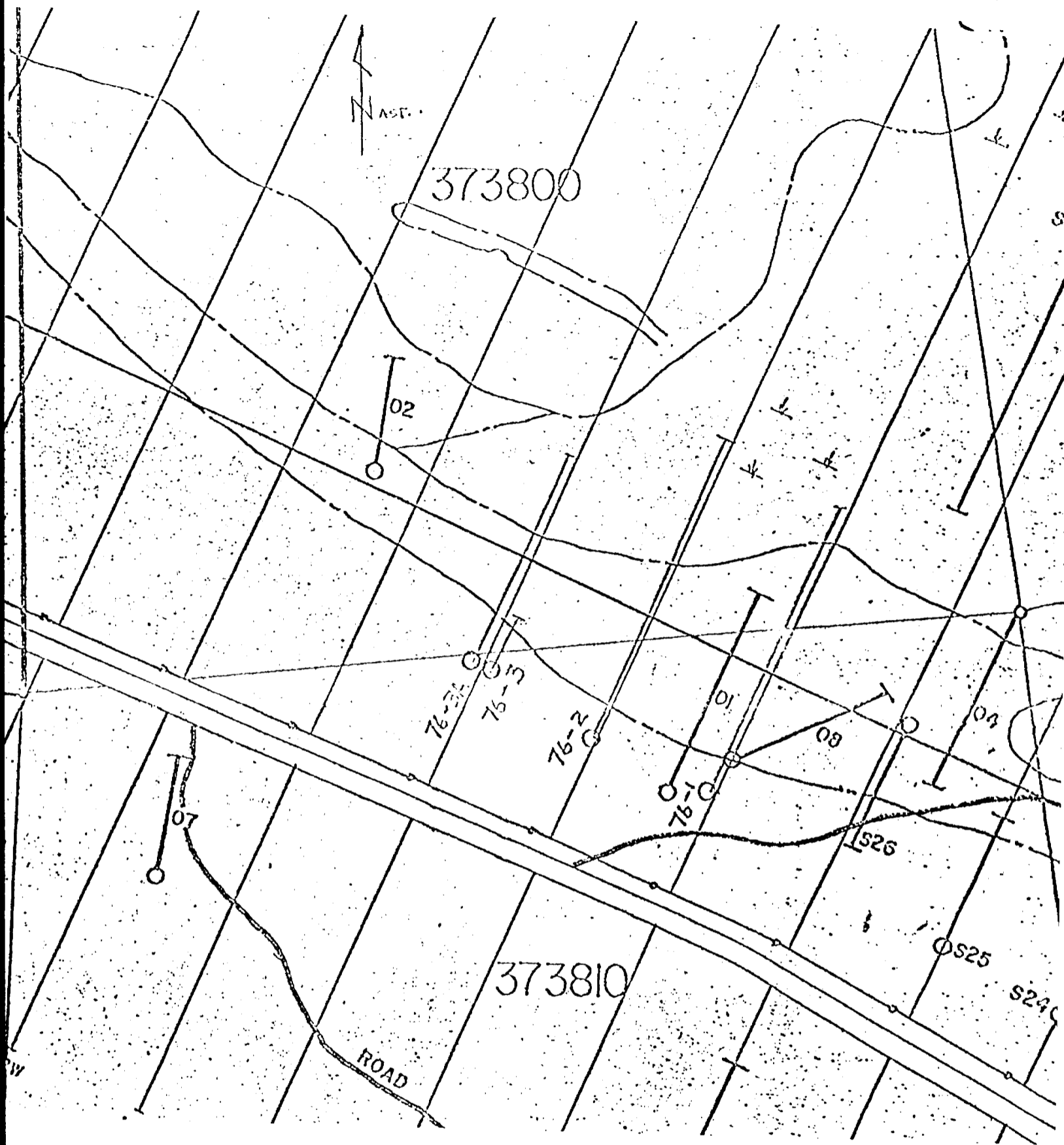


CLAIM GROUP

Mayfair Mines

Gauthier Twp

1" = 1000 feet



HOLE LOCATIONS

- M76-1 - 480' west & 250' south of #1 Post
- M76-2 - 650' west & 140' south of #1 Post
- M76-3 - 830' west & 40' south of #1 Post
- M76-3A - 800' west & 20' south of #1 Post

Mayfair Mines Ltd.,  
 Gauthier Township, Ontario,  
 showing drill holes M76-1-2-3-3A.  
 Claim No. L-373810  
 Scale 1" = 200 feet.

L. J. Cunningham - April 1977