

DIAMOND DRILLING



32004SW0325 32 BOSTON

010

TOWNSHIP: BOSTON

REPORT No.: 32

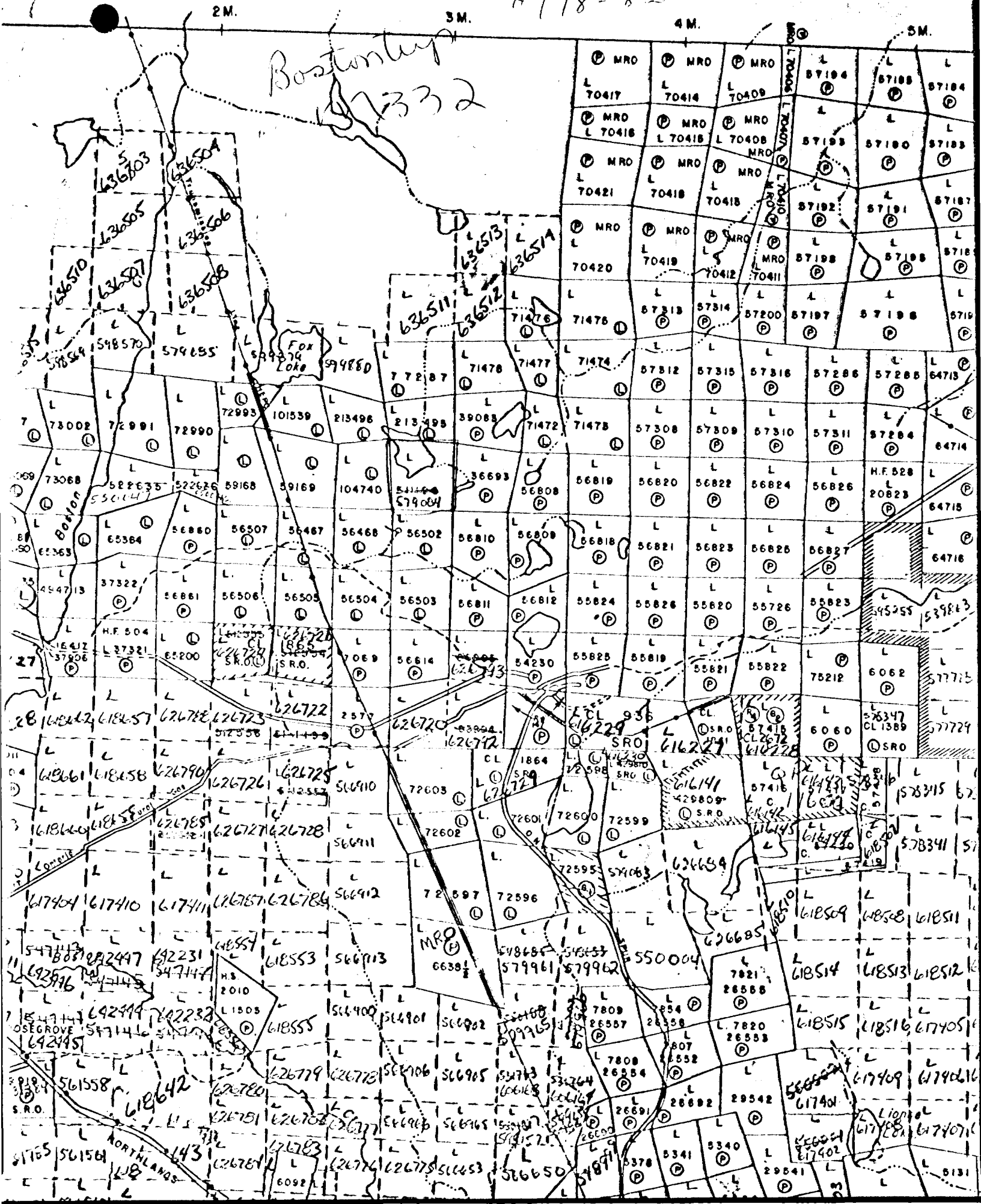
WORK PERFORMED BY: MARSHALL MINERALS CORP.

<u>CLAIM No.</u>	<u>HOLE No.</u>	<u>FOOTAGE</u>	<u>DATE</u>	<u>NOTE</u>
L 579084	82-3	250.0	MAR./82	(1) (2)
	82-4	338.0	MAR./82	(1)
		<u>588</u>		

NOTES: (1) #178-82
(2) O.M.E.P. Submittal #OM81-6-C-131

Lebel Twp. M.359

H 178-82



LEGEND

D Diorite

Dk Dyke

D diorite
L lamprophyre
qfp quartz feldspar porphyry

V Volcanics mafic: andesite, basalt.

B Basalt
And Andesite

T Tuff

SYMBOLS

Qt quartzose, siliceous
G graphitic
P pumice
Ct cherty
Δ fragmental
m magnetic
chl chlorite, chloritic

py pyrite
cpy chalcopyrite
po pyrrhotite
S galena
sp sphalerite

/ slips, fractures, bedding - inclination.

MARSHAL MINERALS CORPORATION

BOSTON TOWNSHIP PROPERTY
KIRKLAND LAKE AREA, ONTARIO

1982

DIAMOND DRILL PROGRAM

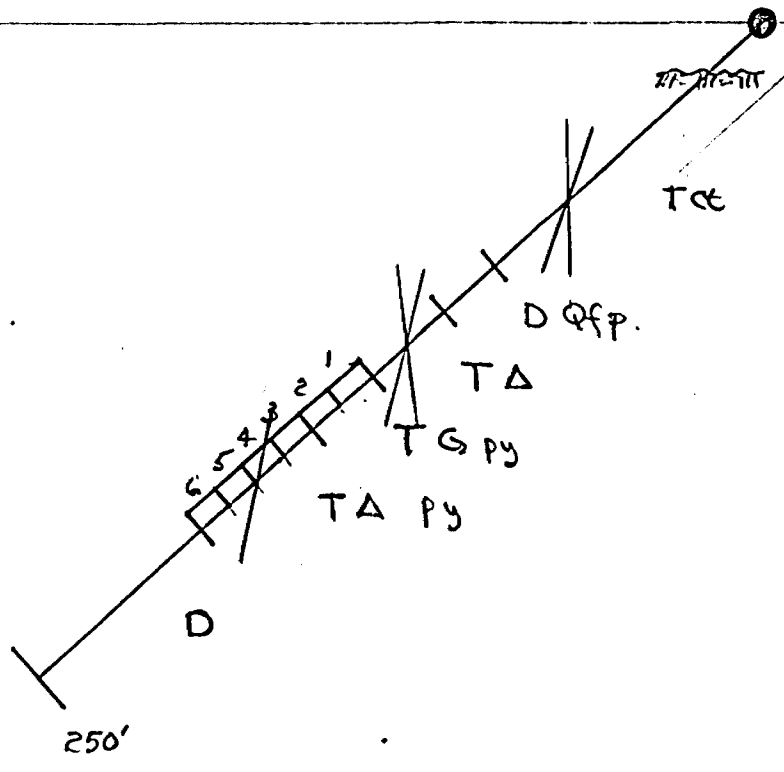
SCALE: 1" ≡ 50' F.P.T. MARCH 1982



Az 180°

2135N
0190E

DDH# 82-3 - Az 250'



SAMPLING

NO.	Core Length	oz		ppm		
		Au	Ag	Cu	Pb	Zn.
1	12.5'	Nil	.02	131	—	1100
2	9'	"	.01	188	—	1800
3	10'	.002	.01	52	—	472
4	10'	"	Nil	60	—	102
5	9'	"	Nil	48	—	74
6	10'	"	.01	219	—	421

MARSHAL MINERALS CORPORATION

BOSTON TOWNSHIP PROPERTY
KIRKLAND LAKE AREA, ONTARIO

DDH# 82-2 SECTION

SCALE .1" = 50'

MARCH 1982

F.P.T.



DIAMOND DRILL RECORD

LOGGED BY Frank P. Tagliamonte, P. Eng.

PROPERTY MARSHALL MINERALS INCORPORATED

GRID LATITUDE 2+55N BEARING OF HOLE Az 180° STARTED 15 March 1982

GRID DEPARTURE 0+90E DIP OF HOLE -42° COMPLETED 17 March 1982

ELEVATION _____ DIP TESTS _____ DEPTH 250'

CORE SIZE AQ DIAMOND DRILL CONTRACTOR BARRON DIAMOND DRILLING, Haileybury, Ontario.

D.D.H. No. 82-3 PAGE 1/4

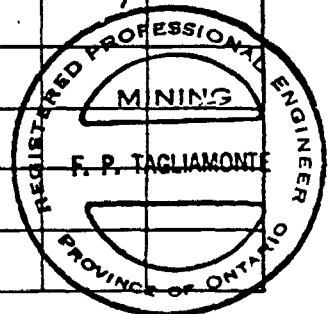
CLAIM No. L 579084

DIRECTION AND DISTANCE FROM

NE. CLAIM POST



FOOTAGE		DESCRIPTION	SAMPLE No.	FOOTAGE		SAMPLE LENGTH	ASSAY							
FROM	TO			FROM	TO									
0	18	<u>CASING.</u>												
18	93	<u>TUFF - Black, Cherty.</u> Charcoal black and dark gray dense hard fine grained cherty tuff. Random narrow 1-2" pink rhyolite? fragments or bands. Random pale ash gray irregular fragments with distorted bedding. Slips and fractures at all angles to core - generally from 30-50°. 50% broken and fragmented core throughout. 50 1" ± fragmented re-cemented fault zone.												
93	110 [±]	<u>QUARTZ-FELDSPAR PORPHYRY DYKE.</u> Multiple series of slips. Several with fine pyrite and chloritic plattings. One slip with fine disseminated galena. Fine granular pink and pearly gray quartz and feldspar phenocrysts in a fine grained ash gray groundmass. Cut by a multiplicity of slips generally @ 40° Sparse random disseminated fine pyrite.												

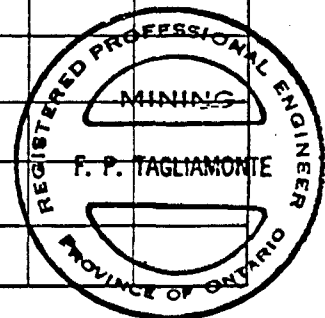



FOOTAGE		DESCRIPTION	SAMPLE NO.	FOOTAGE		SAMPLE LENGTH	ASSAY							
FROM	TO			FROM	TO									
110±	134.5±	<u>TUFF</u> . Fragmental. Ash gray pearly gray and charcoal gray wispy intermixed poorly defined tuff fragments. Rare fragmented pearly gray quartzose fragment. Numerous slips from 35-55°.												
		130.5 6"± of pink fragmented cherty tuff with patchy fine disseminated pyrite in matrix.												
134.5±	155±	<u>TUFF</u> . Graphitic, Pyritic Black thinly bedded, hard, cherty, weakly graphitic tuff. Thin conformable seams and disseminations of fine pyrite. Weakly magnetic. 3%± sulphides.												
		135-146 50% broken and fragmented core. 135.5 1" fault gouge. Bedding @ 42°± Numerous slips generally conformable to bedding. Fine disseminated and thin platings of galena on some slips.												
155±	194±	<u>TUFF</u> . Fragmented, Pyritic. Mixed ash gray, pearly gray bedded and fragmented tuff. Random bands of black, bedded, graphitic tuff. Random fragments of pearly gray and pink quartz and rhinolite? Random thin seams and irregular patches of fine granular pyrite.												



FOOTAGE		DESCRIPTION	SAMPLE NO.	FOOTAGE		SAMPLE LENGTH	ASSAY			
FROM	TO			FROM	TO					
155 [±]	194 [±]	<u>TUFF</u> - <u>Fragmented</u> . <u>Pyritic</u> --- cont'd. --- 2% pyrite. Weakly but noticeably magnetic throughout. 158 18" black and gray bedded, pyritic, graphitic zone. Bedding @ 35° 171 4" ± fragmented quartz stringer cemented by patches of granular fine pyrite. 15% pyrite. 175 [±] - 177 [±] Bedded gray and black pyritic tuff zone. Bedding @ 38° ±. 193 14" fragmented pink quartzite fragment with patches and disseminations of fine pyrite.								
194 [±]	250	<u>DIORITE</u> . Pale green, uniformly granular diorite. Random irregular patches and spongy areas of pale green to ash gray epidote. 30% ± epidote contamination. Multiple series of slips generally @ 48° ±. 30% broken core.								
250		<u>END OF HOLE.</u> casing removed.								

Frank P. Tagliamonte, P. Eng.
18 March 1982

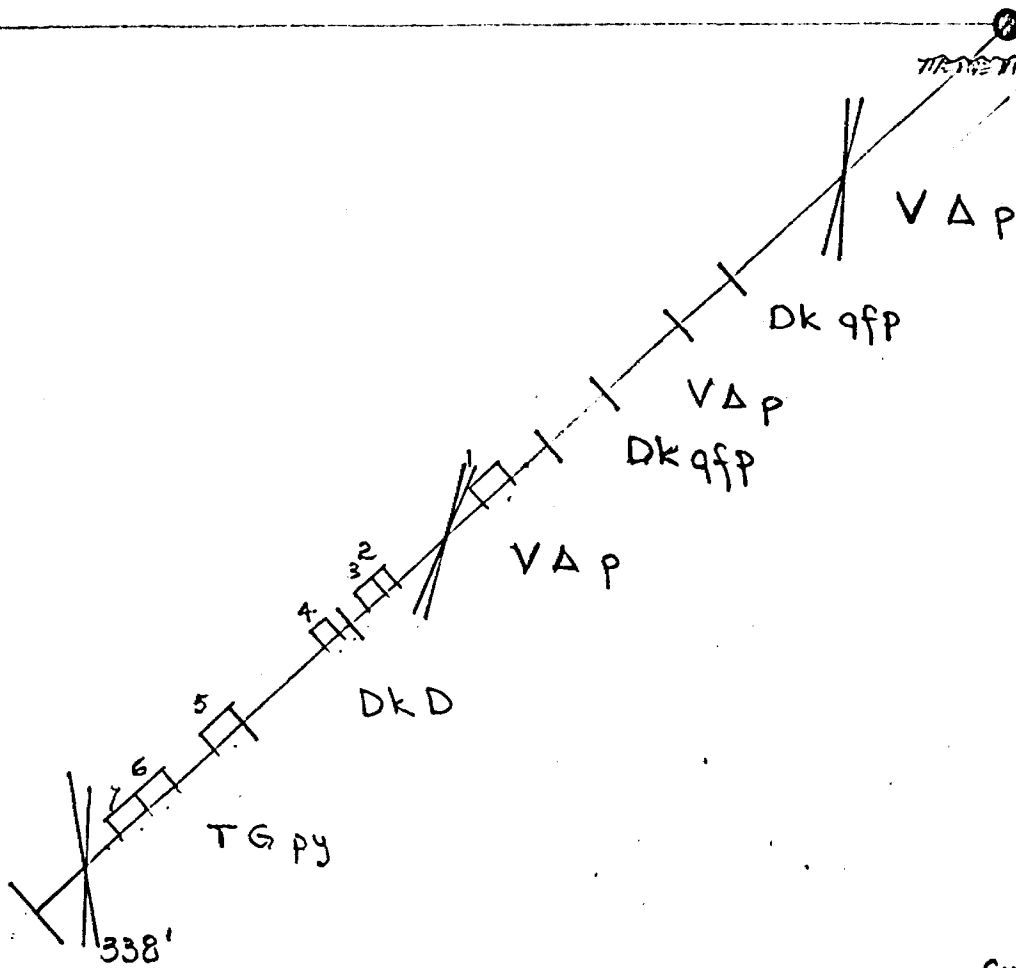


FOOTAGE		DESCRIPTION	SAMPLE NO.	FOOTAGE		SAMPLE LENGTH	OZ		ASSAY ppm		
FROM	TO			FROM	TO		Au	Ag	Cu	Pb	Zn
		<u>SAMPLING.</u>									
			823-1	134.5	147	12.5'	Nil	.02	131	—	1100
			823-2	147	156	9'	"	.01	188	—	1200
			823-3	156	166	10'	.002	.01	52	—	472
			823-4	166	176	10'	"	Nil	60	—	102
			823-5	176	185	9'	"	Nil	48	—	74
			823-6	185	195	10'	"	.01	219	—	421
						60.5'					
							Frank P. Tagliamonte, P. Eng. 18 March 1982				

Az 352°

4+10s
1+50E

DDH# 82-4 - 42° 338'



SAMPLING

NO.	Core Length	OR		PPM		
		Au	Ag	Cu	Pb	Zn
1	9'	.002	Tr	70		84
2	4.5'	Nil	.01	245		1700
3	6.5'	"	Tr	281		810
4	5'	.002	Nil	—		—
5	10'	.002	"	177		230
6	10'	Nil	.01	202		360
7	10'	"	Tr	71		22

MARSHAL MINERALS CORPORATION

BOSTON TOWNSHIP PROPERTY
KIRKLAND LAKE AREA, ONTARIO

DDH# 82-4 SECTION

SCALE: 1" = 50' F.P.T. MARCH 1982



DIAMOND DRILL RECORD

LOGGED BY Frank P. Tagliamonte, P. Eng.

PROPERTY MARSHALL MINERALS INCORPORATED

GRID LATITUDE 4+10S BEARING OF HOLE Az 352° STARTED 18 March 1982

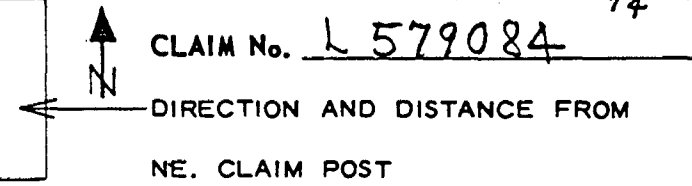
GRID DEPARTURE 1+50E DIP OF HOLE -42° COMPLETED 19 March 1982

ELEVATION _____ DIP TESTS _____ DEPTH 338'

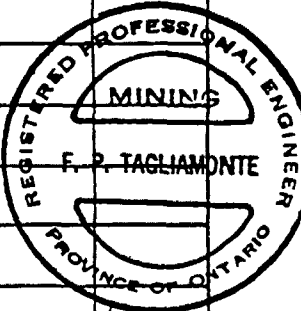
CORE SIZE AQ DIAMOND DRILL CONTRACTOR _____

D.D.H. No. 82-4 PAGE 1/4

CLAIM No. L 579084



FOOTAGE		DESCRIPTION	SAMPLE No.	FOOTAGE		SAMPLE LENGTH	ASSAY						
FROM	TO			FROM	TO								
0	12	<u>CASING.</u>											
12	95	<u>Mafic Volcanic. Andesite. Patchy</u> Dark green fine grained groundmass. Irregular, spongy, pale gray fine grained spots and patches with discreet fine grains of pyrrhotite. 30% ± spots and patches. Random fragments of pumice and porphyry. Numerous slips from 35-50°. Variations as noted.											
		47 2" ± patch of fine disseminated pyrite. - 20% pyrite.											
		62 12" dark gray feldspar porphyry fragment.											
		77 - 86 Series of pale gray-green pumaceous fragments from 2" - 12" ±.											
95	114	<u>FELDSPAR PORPHYRY DYKE</u> Fine porphyritic gray and pink feldspar porphyry dyke. Charcoal gray fine grained groundmass, fine 1mm pearly white and pink semi angular phenocrysts. Chilled upper and lower contacts.											

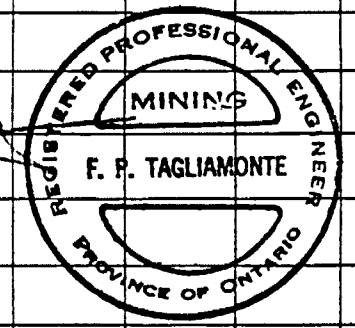


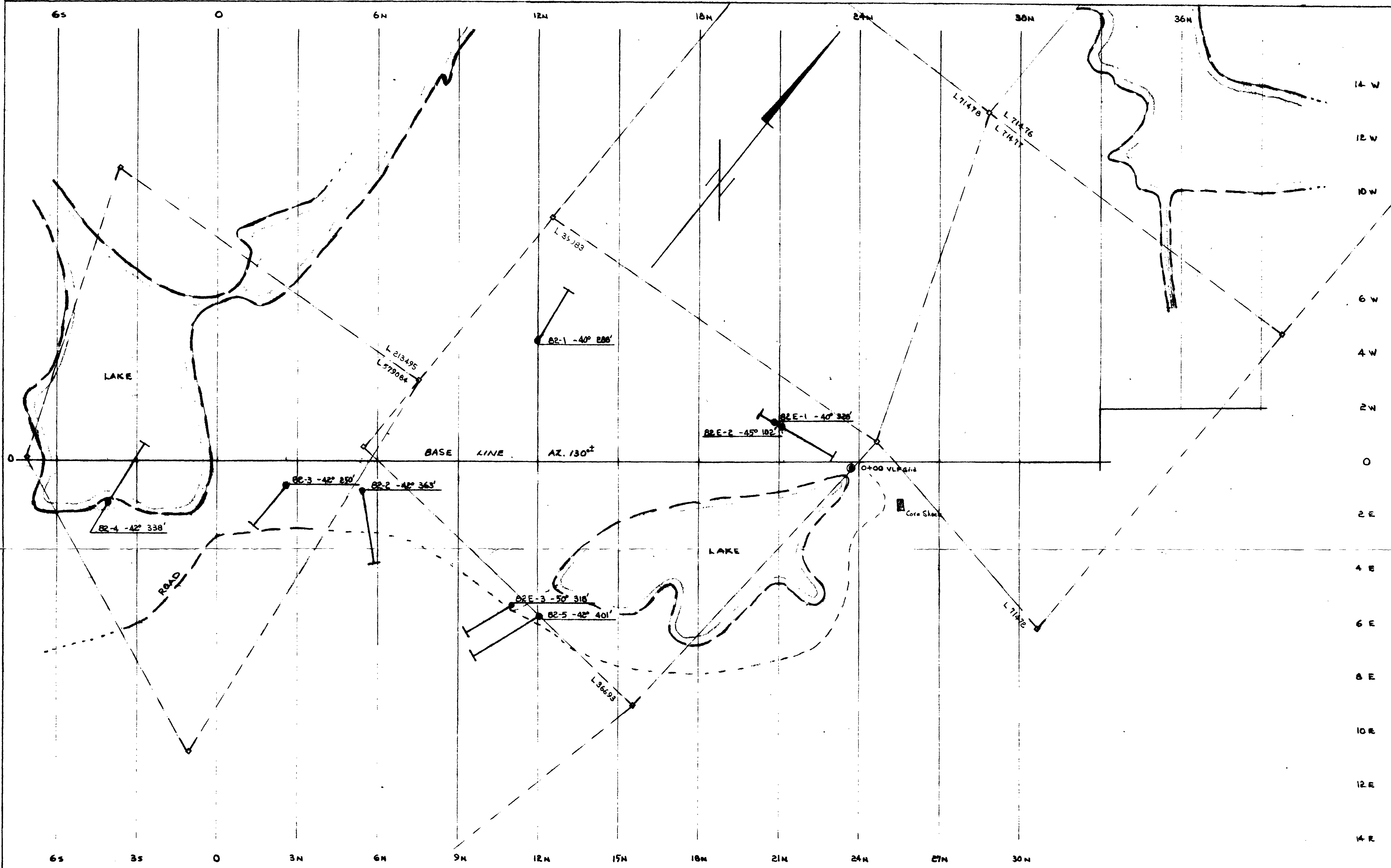
FOOTAGE		DESCRIPTION	SAMPLE NO.	FOOTAGE		SAMPLE LENGTH	ASSAY							
FROM	TO			FROM	TO									
114	140	<u>MAFIC VOLCANICS · Andesite. Patchy.</u> Generally as above.												
140	160	<u>FELDSPAR PORPHYRY DYKE</u> As above.												
160	228 [±]	<u>MAFIC VOLCANICS · Andesite. Patchy. Fragmental.</u> Dark green fine grained groundmass. 40% [±] pale ash gray "cloudy", stretched, irregular fragments and shards. Locally magnetic. Variations as noted: 167.5 6" irregular outline fragment with very fine grained pyrrhotite and pyrite. Strongly magnetic.												
	175.5 - 172.5	Dark green fine grained groundmass with random irregular pale pink garnet patches. Random disseminated fine pyrrhotite and thin seams of pyrite. Notably magnetic throughout.												
	172.5 - 181 [±]	Pale pink porphyritic (quartz eye) rhyolite fragment Random small irregular patches of pyrrhotite and minor pyrite.												
	206 [±] - 208 [±]	Thinly bedded tuff fragment - Bedding @ 35 [±] .												
	212 [±] - 216.5 [±]	Finely bedded tuff - in part graphitic - Bedding from 25-35 [±] . 2% [±] fine hair-like pyritic seams. Notably magnetic.												
	216.5 [±] - 223	Random thin seams of pyrite in andesite with gray irregular patches - 1/2% [±] pyrite.												



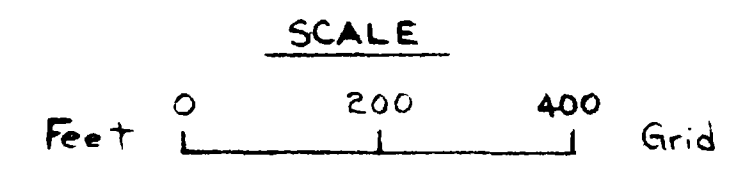
FOOTAGE		DESCRIPTION	SAMPLE NO.	FOOTAGE		SAMPLE LENGTH	OZ		ASSAY PPM	
FROM	TO			FROM	TO		AU	Ag	Cu	Pb
		<u>SAMPLING.</u>								
			824-1	173	182	9'	.002	Tr	70	84
			824-2	212	216.5	4.5'	Nil	.01	245	1700
			824-3	216.5	223	6.5'	"	Tr	281	810
			824-4	232	238	5'	"	Nil	—	—
			824-5	266	276	10'	.002	Nil	177	236
			824-6	290	300	10'	Nil	.01	202	364
			824-7	300	310	10'	"	Tr	71	225
						55'				

Frank P. Tagliamonte, P. Eng.
24 March 1982





NOTE:
 Map reduced from MaxMin II Survey Map
 by T.P. Machinichol 1982
 Tie-ins by compass. May be subject to correction
 due to magnetic disturbances on ground.
 Claim boundaries from Radem VLF Survey Plan
 by A.C.A. Howe International Ltd. 1981.



GEOLOGICAL ENGINEERING SERVICES
MARSHAL MINERALS CORPORATION
 DIAMOND DRILL HOLE
 LOCATION PLAN
 BOSTON TWP PROPERTY - Larder Lake Mining Div.
 APRIL 1982 F.R. Tagliamonte, P.Eng.

