

DIAMOND DRILLING



32D04SW0326 33 BOSTON

010

TOWNSHIP: Boston

REPORT No.: 33

WORK PERFORMED BY: Dofasco Inc.

<u>CLAIM No.</u>	<u>HOLE No.</u>	<u>FOOTAGE</u>	<u>DATE</u>	<u>NOTE</u>
L 550046	82-1	300.0	Sept/82	(1)

NOTES: (1) #318-82

Daily Report of Diamond Drilling

Hole No. 82-1

Bearing $N70^{\circ}E$ Dip $36\frac{1}{2}^{\circ}$ at collar
 $35\frac{1}{2}^{\circ}$ at 300'

Location L-550046

Twp. of Boston
Size AQ.

Footage	Core Lost	Description
0 - 8	Casing	Sept. 20/82 - Moved drill into location and set up.
- 15	13"	Located supply pump and laid out water line. Drilled
- 23	0	eye bolt and set casing.
- 25	6"	
-35	30"	Sept. 21/82 - Started casing.
-45	4"	0-102 Volcanics. Variegated light to dark green, fine
-55	0	grained.
-65	0	18.5' tuffaceous banding
-75	3"	21-23' numerous inclusions of quartz-feldspar, epidote up
-85	0	to 1" in diameter. Minor pyrite in the inclusions.
-95	5"	28' - 1" vein of quartz-feldspar.
-102	6"	45' - 46' pyrite small crystals
-113	12"	75-76 Pyrite small crystals
-125	24"	79' fault or slip zone, gouge filled $\frac{1}{4}$ in. wide
-135	0	85-86 pyrite small crystals
-145	2"	102 - 163.5 bedded tuffs medium to dark green
-155	0	163.5 - 170 Massive volcanics
-165	0	170 - 187 Altered volcanics mottled red and green in colour.
-175	16"	Badly fractured 173 - 175.
-179	12"	187 - 316 altered volcanics, dioritic in texture,
-185	0	siliceous, coarse grained rich in feldspar, quartz epidote.
-195	0	Minor pyrite throughout as small crystals.
-205	3'	198 - 200 syenite dike
-215	0	212' - 3" quartz vein

THE ADAMS MINE
Daily Report of Diamond Drilling

Hole No. _____

Location _____


Ream _____

Dip _____

Size _____

-2-

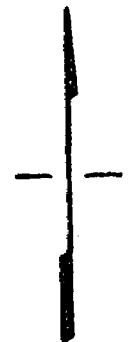
Footage	Core Lost	Description
-225	0	295 - 2" quartz vein
225-235	14"	1" quartz vein
-245	0	1" " "
-255	10"	300- - 1" quartz vein
-265	0	302-1" " "
-275	0	306-2" " "
-285	0	309-5" " "
-295	0	316 - 320 Massive volcanics with mottled red and green
-305	4"	inclusions.
-315	2"	
-320	0	
END OF HOLE		
CORE RECOVERY 95.68%		
ANGLE TEST AT 300' ETCHED ANGLE 41½ TRUE ANGLE - 35½		
END OF HOLE		
CORE LOGGED BY: L. K. Oliver, P. Eng.,		
65 Federal Street,		
KIRKLAND LAKE, Ontario		
P2N 1G1		


L. K. Oliver
 L. K. Oliver, P. Eng.

S-89°-11'E

4-L-550046
1-L-550047

BOSTON Twp.



L-550047

L-550046

D.D.H. 82-1
N-70°E

41.23'

259.68'

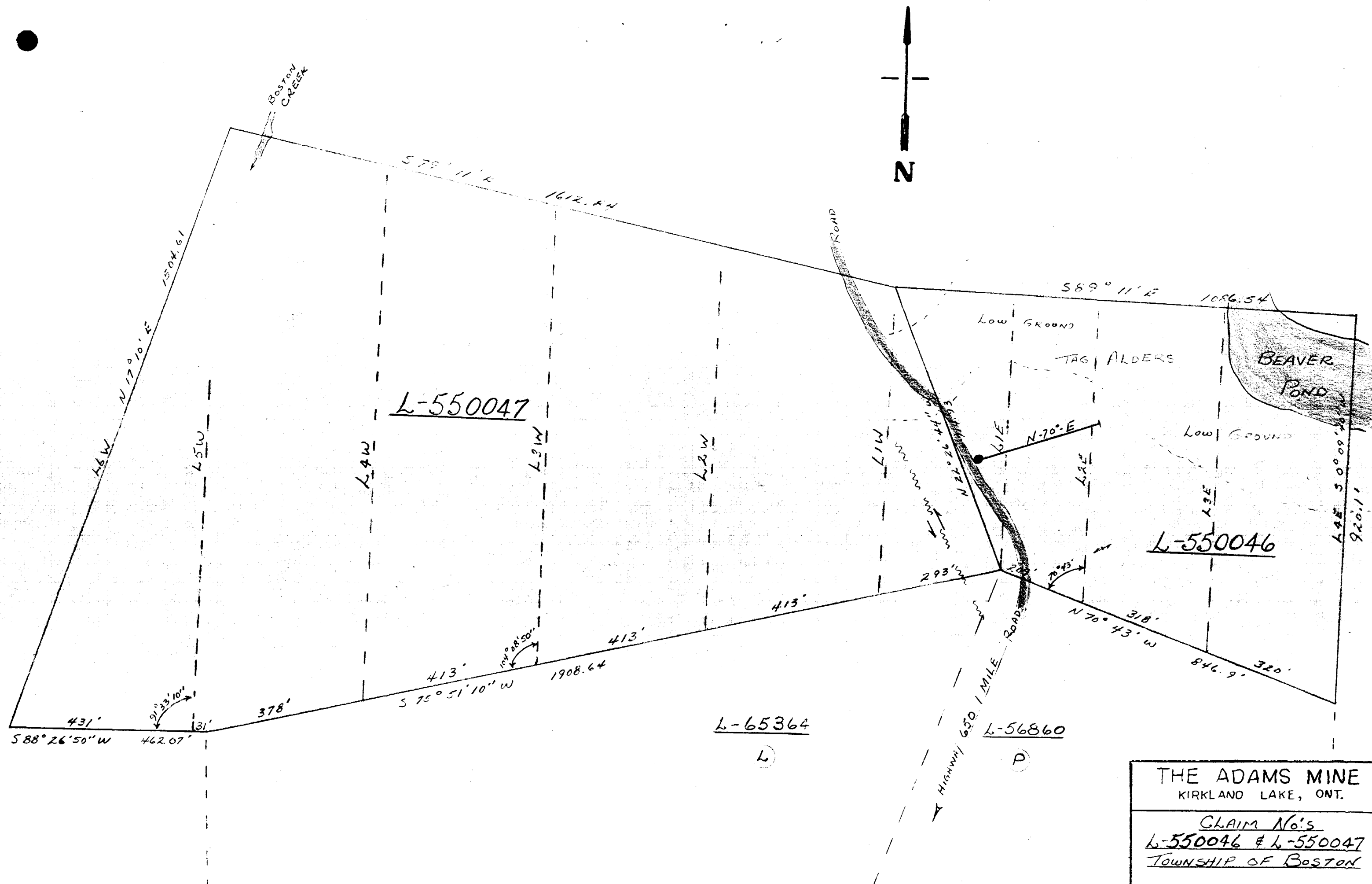
S-75°-51'W

3-L-550046
2-L-550047

N 70°-43'W

SKETCH SHOWING
DETAILED LOCATION OF
DIAMOND DRILL HOLE 82-1
DRAWN BY L.K.O. SEPT. 26/82

1"=100'



L-550047

L-550046

L-65364

L-56860

THE ADAMS MINE
KIRKLAND LAKE, ONT.

CLAIM No's
L-550046 & L-550047
TOWNSHIP OF BOSTON

1" = 200' L.K.O. 1987