



32D04SW0327 11 GAUTHIER

010

Diamond Drilling

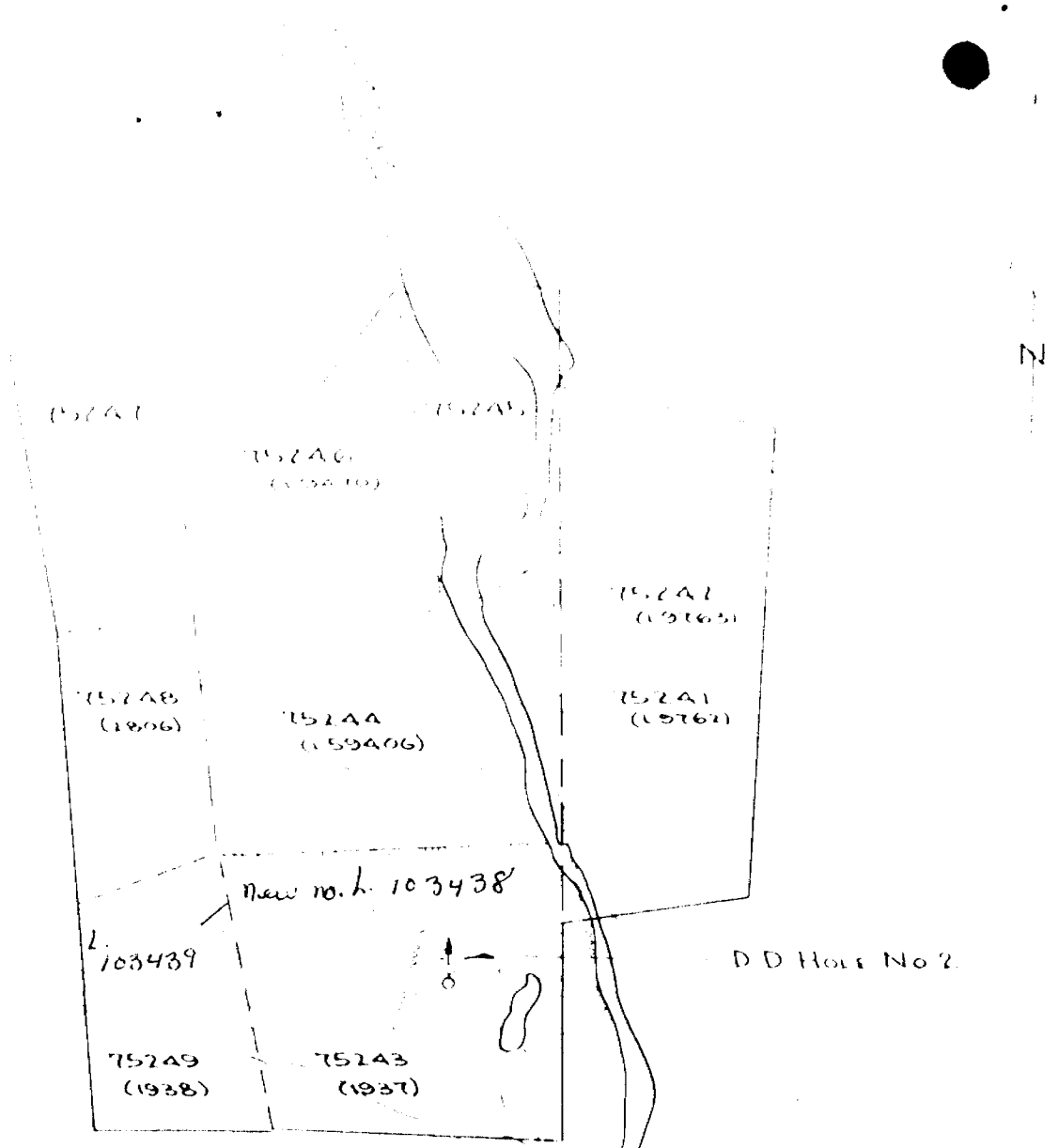
Township of Gauthier

Report No: 11

Work performed by: Solomino Gold Mines Ltd.
(A. Csere)

Claim No	Hole No	Footage	Date	Note
L 75243	2	511'	Feb/63	

Notes:



South east part of
GAUTHIER TWP

McVITTIE TWP

[Handwritten Signature]

LEGEND

- KEEWEENAWAN OR MATACHEWAN
- [] DIABASE
- TEMISKAMING
- [] ACID VOLCANICS - TRACHYTE 7(a)
TRACHYTE BRECCIA + AGGLOMERATE 7(b)
- [] FINE GRAINED SEDIMENTS
- [] CONGLOMERATE WITH GREYWACKE

GEOLOGY
of
THE GAUTHIER McVITTIE PROPERTY
of
SOLOMINO GOLD MINES LTD
KIRKLAND LARDER AREA
ONTARIO

SCALE 1" = 1000'

18 JULY 1962 - L.J. CUNNINGHAM
BSC PENG.

FROM O.D.M. MAPS 50b + 50c

DIAMOND DRILL LOG

D. D. HOLE NO. 2PROPERTY Polovino Gold Mines LimitedPAGE 1LOCATION Gauthier Twp. Claim No. 75243 (Formerly 193-D)

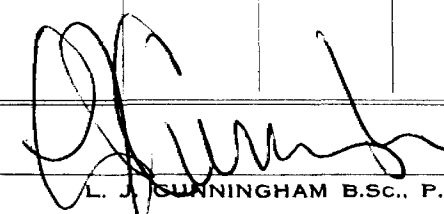
COLLAR: LAT. _____

DEP. _____

ELEV. _____

BEARING North (Astronomic)DIP Minus 45°DEPTH OF HOLE 511 feetSTARTED 7 February, 1963COMPLETED 16 February, 1963DRILLED BY Newman Drilling & Exploration
8 Rowan Ave., Kirkland Lake, Ont.

FROM	TO	DESCRIPTION	SAMPLE NO.	CORE FT.
0	10	Casing		
10		TERMINATING SEDIMENTS - Greywacke thin bedded, sheared, crenulated, generally 60° - 90°/core light colour white to buff occasional small squeezed pebble irregular interjection of white barren quartz		
		16' 5" white quartz		
		19' 3" " "		
		26' 4" " "		
		56' 4" " "		
		70' 11" " "		
83	103	Very thin bedded 1/8" - 1/4" beds grey to black 70°-90°/core		
		101 - 10" white quartz		
110	120	generally thin bedded 1/8" - 1/4" beds with occasional massive bed of several feet dark grey to black		
		118 - 121 18" white quartz		
		123 - 124 12" " "		
		135 - 136 8" " "		
		143 - 145 7" " "		
		154 - 156 18" " "		
165	240	Distinct bedding 1/4" - 1/2" thick dark grey to black colour		
240	263	Light coloured buff to grey thin bedded with occasional more massive bed to 12" thick bedding 60° - 70°/core occasional 1/2" to 1" quartz		
263	275	Grey to black Distinct thinly bedded		
275	278	Conglomerate		
277	285	Mixture of grey to buff to black thinly bedded sediments		
		265-266.5 8" white quartz		



DIAMOND DRILL LOG

D. D. HOLE NO. 2PROPERTY Clonino Gold Mines LimitedPAGE 2

FROM	TO	DESCRIPTION	SAMPLE NO.	CORE FT.
285	320	dark grey to black thin bedded sediments irregular stringers and lenses of white barren quartz		
320	455	predominantly conglomerate assorted pebbles both large and small white to grey colour occasional wide 12" - 24" bed of greywacke Greywacke beds squashed and distorted 335 - 360 numerous irregular quartz lenses and stringers 428 6" quartz 435 - 455 scattered irregular narrow stringers of quartz		
455	468	thin bedded dark grey greywacke considerable irregular quartz 465 - 468 12" quartz		
488	509	Predominantly conglomerate with assorted pebbles and occasional substantial sections of greywacke		
509	511	thin bedded buff coloured greywacke with irregular quartz		
		END OF HOLE		
		.		
		.		

TPC NEW LISKEARD, ONTARIO

DRILLED BY _____

SIGNED _____

L. J. CUNNINGHAM