

32D05NW0036 14 THACKERAY

010

Diamond Drilling

Township of THACKERAY

Report No: 14

Work performed by: N.B. Keevil

Claim No	Hole No	Footage	Date	Note
L 52679	1	1007.0'	July/47	

Notes:

LOCATION Trackway Township

STARTED July 1947

COMPLETED August 1947

LENGTH 1,007.0'

RECOVERY _____ %

PROPERTY H.B. Estey's claim

PURPOSE Investigating structure and mineralization

REMARKS No economic values found.

L.S. 879.2151

HOLE NO. _____

DIP TESTS	
200'	48° 30'
400'	38° 30'
800'	35° 00'
1000'	31° 30'

LAT. 44° 40' - 6

DEP. 01,749012

ELEV. _____

BEAR. S 02° W

DIP. COLLAR 45°

N.M.P.-8760

FOOTAGE		DESCRIPTION	CORE					
FROM	TO		SPL. NO.	FROM	TO	WIDTH	OZ. GRADE	AV. GRADE
0.0	204.0	Cellar						
0.0	204.0	Casting						
204.0	540.0	Andesite						
		227.0 - 227.5	4	0.5'			trace	
		227.5 - 293.8						
		293.8 - 295.0	5	1.2'			trace	
		295.0 - 312.5						
		312.5 - 314.6						
		314.6 - 505.5						
		314.6 - 316.5						
		316.5 - 318.0						
		318.0 - 345.6	1	1.5'			0.005 oz	
		345.6 - 349.7						
		349.7 - 350.0						
		350.0 - 365.0						
		365.0 - 371.0						
		371.0 - 372.0	6	1.0'			0.02 oz	
		372.0 - 382.5						
		382.5 - 385.5	2	0.8'			trace	
		385.5 - 389.5						
		389.5 - 400.5						
		400.5 - 402.0	7	1.0'			trace	
		402.0 - 430.5						
		430.5 - 452.5						

PROPERTY H.B. Keovil's claims

FOOTAGE		DESCRIPTION	CORE					
FROM	TO		SPL. NO.	FROM	TO	WIDTH	OZ. GRADE	AV. GRADE
452.5	457.0	Pine grained - massive						
457.0	459.0	lost core						
459.0	506.5	Pine grained - massive						
506.5	510.0	" " " "	8	4.5'			0.01 oz.	
510.0	514.0	" " " "	9	4.0'			0.005	
514.0	518.0	" " " "	5	4.0'			0.005	
518.0	521.0	" " " "						
521.0	522.0	" " " "						
522.0	537.8	" " " "	10	1.0'			0.01	
537.8	540.0	lost core						
Feldspar porphyry								
540.0	545.0	Medium grained - massive - weak disseminated pyrite	11	5.0'			Trace	
545.0	548.5	lost core						
548.5	625.0	Pine grained - massive - occasional speck pyrite						
Andesite								
625.0	646.0	Medium grained - massive						
646.0	676.8	Pine grained - massive - carbonated - occasional pyrite						
676.8	677.6	" " " "	12	0.8'			0.03	
677.6	682.0	" " " "						
682.0	683.0	" " " "						
683.0	684.0	" " " "	15	1.0'			Trace	
684.0	687.4	" " " "						
687.4	689.2	" " " "	14	3.4'			M11	
689.2	690.0	" " " "	15	1.8'			M11	
690.0	691.14	" " " "	16	1.4'			M11	
691.14	692.5	" " " "						
692.5	695.5	" " " "	17	2.8'			M11	
695.5	696.0	" " " "						
696.0	700.0	" " " "	18	4.0'			Trace	
700.0	704.0	" " " "						
704.0	707.2	" " " "	19	3.2'			Trace	
707.2	712.0	" " " "	20	4.8'			M11	

PROPERTY N.B.Keewill's Claims

HOLE NO. _____
SHEET NO. _____

FOOTAGE		DESCRIPTION	CORE					
FROM	TO		SPL. NO.	FROM	TO	WIDTH	OZ. GRADE	AV. GRADE
712.0	715.0	Fine grained - massive	21	3.0'			Nil	
715.0	716.0	- Weak pyrite-amygdules (silica)	22	1.0'			Nil	
716.0	720.0	" "	23	4.0'			Nil	
720.0	722.5	" "	24	2.5'			Nil	
722.5	725.0	" "	25	2.5'			Nil	
725.0	726.0	" "						
726.0	730.0	- very weak pyrite-amygdules (silica)	26	4.0'			Trace	
730.0	731.8	" "						
731.8	735.0	- very weak pyrite-amygdules (silica)	27	3.2'			Trace	
735.0	736.5	" "						
736.5	740.0	- Very weakly sheared-very weak pyrite-amygdules (silica)	28	3.5'			Trace	
740.0	743.5	" "	29	3.5'			Trace	
743.5	745.4	Goc. shearing, wk. pyrite amygdules	30	1.9'			Trace	
745.4	750.0	- Very weak pyrite - amygdules (silica)	31	4.6'			Nil	
750.0	752.5	" "	32	2.5'			Trace	
752.5	755.0	- Very weak pyrite-amygdules (silica)	33	2.5'			Trace	
755.0	758.6	" "	34	3.6'			Trace	
758.6	769.0	- Very weak pyrite-amygdules (silica)	35	1.4'			Trace	
760.0	762.5	" "	36	2.5'			Trace	
762.5	767.2	" "	37	4.7'			Trace	
767.2	772.0	" "	38	4.8'			Trace	
772.0	775.0	" "	39	3.0'			Trace	
775.0	776.5	- Amygdules (silica)						
776.5	777.3	- Very weak pyrite - occasional talo streak	40	0.8'			Trace	
777.3	782.2	" "						
782.2	784.0	- amygdules (silica)	41	4.9'			Trace	
784.0	787.8	- weak quartz	42	1.8'			Trace	
787.8	790.7	- Weak pyrite - calcite streaks	43	2.9'			Trace	
790.7	791.4	- Amygdules (silica)						
791.4	795.0	- Medium pyrite - occasional calcite streak	44	3.6'			Trace	
795.0	797.8	- Occasional amygdule						
797.8	800.0	- Very weak pyrite - 2" quartz streak	45	2.2'			Trace	
800.0	803.0	- Weak pyrite, amygdules (silica)	46	3.0'			Trace	
803.0	805.3	" "	47	2.3'			Trace	

PROPERTY H. B. Keenly's claim

HOLE NO. _____
SHEET NO. 4

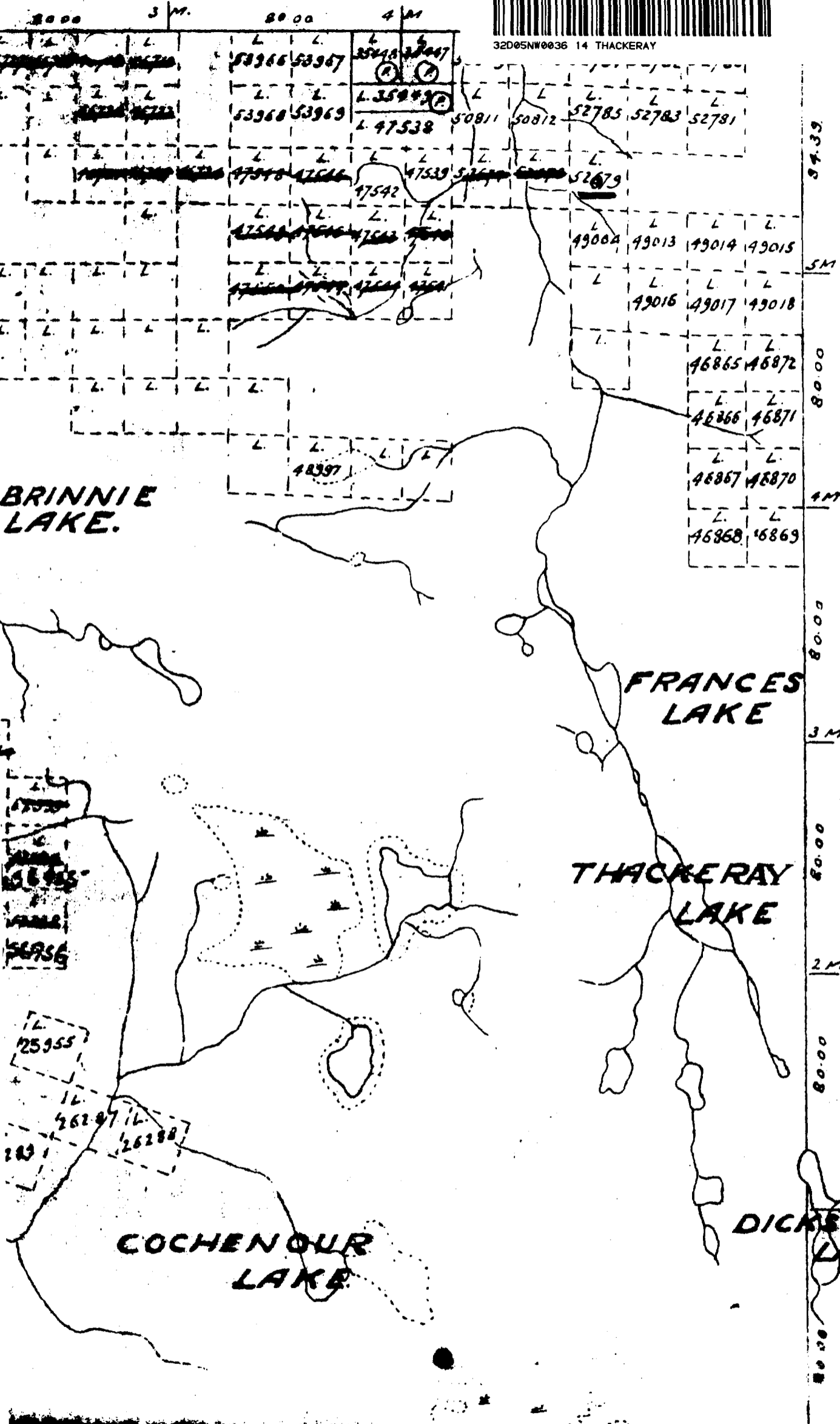
FOOTAGE		DESCRIPTION	CORE					
FROM	TO		SPL NO.	FROM	TO	WIDTH	OZ. GRADE	AV. GRADE
806.5	808.0	fine grained - massive - weak pyrite - anhydrite (allison)	48	2.7'			Trace	
808.0	812.5	" " " " (spotted deg)	49	4.5'			Trace	
812.5	820.9	" " " " - very weak pyrite-anhydrite threads	50	1.7'			Trace	
822.6	831.0	Basalt - occasional pyrite-occasional quartz and calcite stringers						
831.0	835.2	Siliceous zone - massive - very weak pyrite	51	4.2'			Trace	
835.2	838.7	" " " " - occasional calcite streaks	52	1.3'			Trace	
840.0	847.5	" " " " - weak pyrite						
847.5	848.0	" " " " - weakly sheared at 40°						
848.0	1007.0	" " " " - massive - occasional calcite streak						
1007.0		- End of hole.						

Logging done by:
C. L. Stalbrook

RRISON TWR



32005NW0036 14 THACKERAY



900

3

3-1-79

ELLIOTT TWP.

57.39

5M

80.00

4M

80.00

3M

80.00

2M

80.00

80.00

80.00

80.00