



32D05NW0038 10 THACKERAY

010

Diamond Drilling

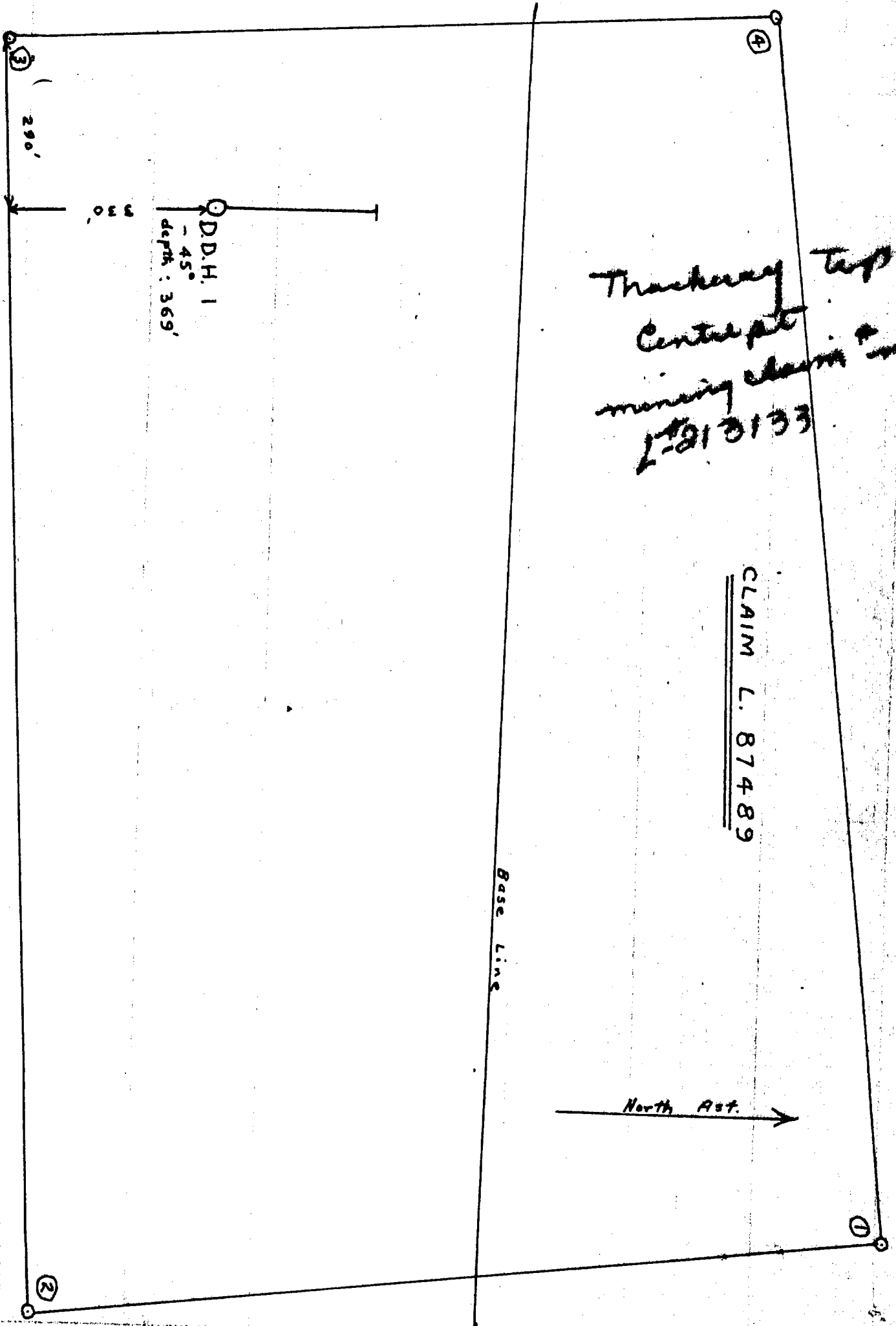
Township of THACKERAY

Report NO: 10

Work performed by: International Bibis Tin Mines Limited

Claim NO	Hole NO	Feet	Date	Note
L 87489	1	369.0'	Nov/65	

Notes:



Trackway top
Center pt
mining claim
L-213133

CLAIM L. 87489

Base Line

North Ast. →

D.D.H. 1
- 45°
depth : 369'

290'

330'

SCALE : 1 in = 200 ft

Property International Bibis Tin Mines Ltd.
Thackery Twp.Hole No. DDH #1Latitude 25 + 00 S Bearing Grid-north Page 1 of 2Departure 87 + 00 W Dip 45° CollarLocation Surface Cl. # Length 369 Core Size AXT (1 1/4")
07489Elevation _____ Started Nov. 3, 1965 Completed Nov. 6, 1965

FROM	TO	FORMATION	SAMPLE NO.	LENGTH FT.			
0	10.	<u>Casing</u> - Overburden					
10.0	21.1	<u>Andesite</u> - dark green, fine gr., much broken core, numerous reddish, brownish stained fractures, some very fine gr. sulphides visible, weakly magnetic.					
21.1	21.3	<u>Fault Zone</u> - Soft, crumbly, light greenish, some fine sulphides visible including some chalcopryite C.A. 40°.					
21.0	29.7	<u>Andesite</u> - as above.					
29.7	30.5	<u>Porphyry</u> - reddish, 40° to core axis.					
30.5	46.0	<u>Andesite</u> - as above - more solid, some sections non-magnetic, some very weakly magnetic.					
46.0	47.0	<u>Feldspar Porphyry Dyke</u> - reddish contact angle 20-25°.					
47.0	53.0	<u>Andesite</u> - as above.					
53.0	83.0	<u>Gabbro</u> - dark greenish, coarsely granular, magnetic, some places quite strongly, fine sulphides in minute quantities visible.					
83.0	83.5	<u>Granite Dyke</u> - fine grained, greyish red, siliceous - 30° C.A.					

96+ % CORE RECOVERY

Drilled by Bradley Bros., Timmins, Ont. Logged by H. Watts

Property International Bibis Tin Mines Ltd.
Thackery Twp.Hole No. DDH#1Latitude _____ Bearing _____ Page 2 of 2

Departure _____ Dip _____

Location _____ Length _____ Core Size _____

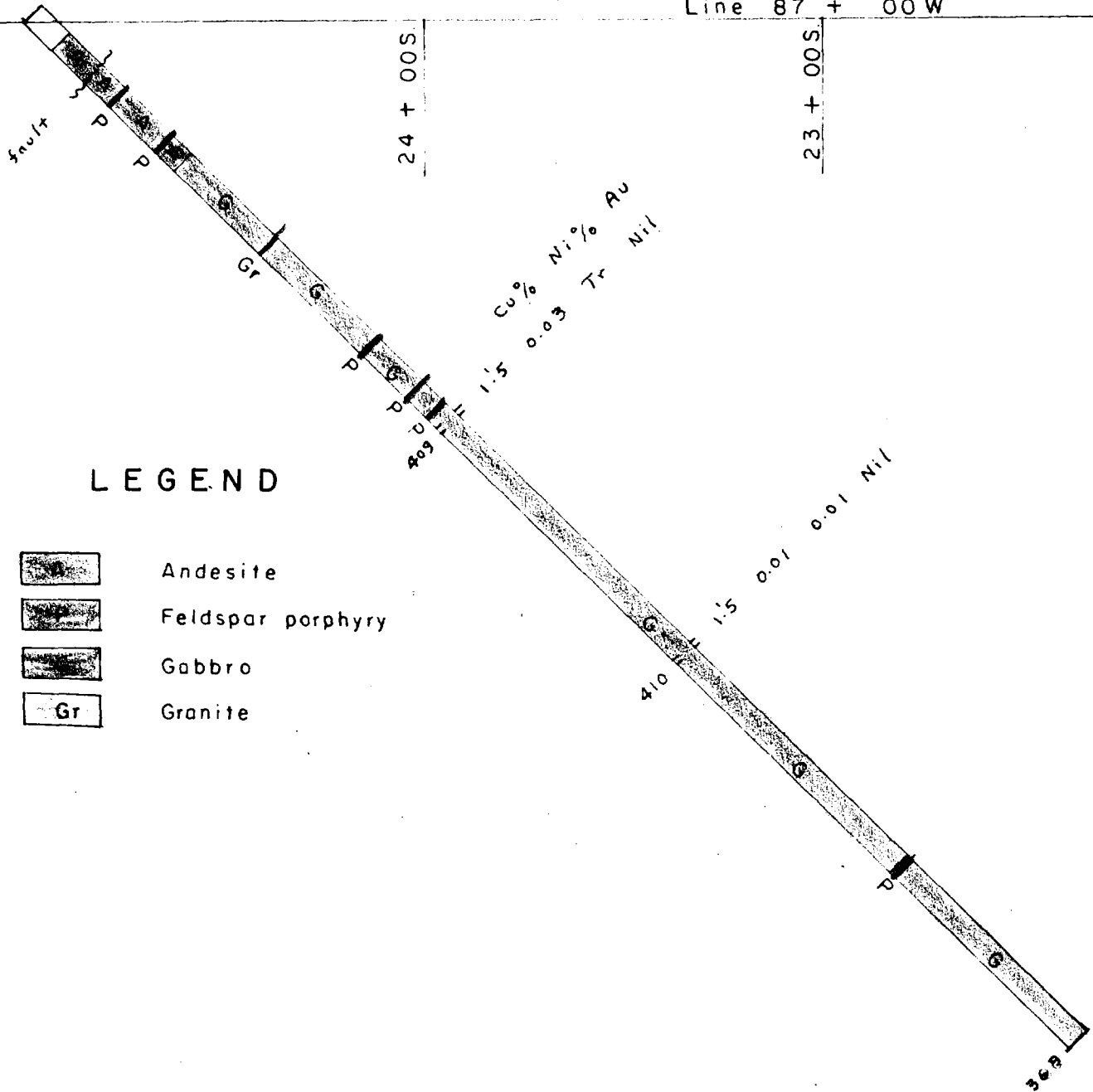
Elevation _____ Started _____ Completed _____

FROM	TO	FORMATION	SAMPLE NO.	LENGTH FT.	% Cu.	% Ni.	Au.	
83.5	119.0	<u>Gabbro</u> - as above, coarser more uniform in texture.						
119.0	119.4	<u>Feldspar Porphyry</u> - dyke, reddish contact angle - 45°						
119.4	135.1	<u>Gabbro</u> - as above.						
135.1	135.5	<u>Feldspar Porphyry</u> - dyke, reddish fine						
135.5	142.6	<u>Gabbro</u> - as above.						
142.6	143.0	<u>Feldspar Porphyry</u> - dyke						
143.0	146.0	<u>Gabbro</u> - as above.						
146.0	147.5	<u>Gabbro</u> - as above, considerable fine sulphides mostly pyrite visible.	409	1.5	0.03	Trace	Nil	
147.5	230.0	<u>Gabbro</u> - as above, very uniform magnetic throughout, numerous narrow porphyritic dyklets.						
230.0	231.5	<u>Gabbro</u> - as above, more sulphides.	410	1.5	0.01	0.01	Nil	
231.5	307.0	<u>Gabbro</u> - as above, a 1" quartz vein at 137.						
307.0	309.0	<u>Feldspar Porphyry</u> - dyke						
309.0	369.0	<u>Gabbro</u> - becoming finer grained some sections non-magnetic or very weakly magnetic.						
End of Hole							% CORE RECOVERY	




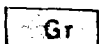
Drilled by Bradley Bros., Timmins, Ont. Logged by H. Watts

D.D.H. I

Line 87 + 00W



LEGEND

-  Andesite
-  Feldspar porphyry
-  Gabbro
-  Granite

INTERNATIONAL BIBIS TIN MINES LTD.
THACKERAY TOWNSHIP, ONTARIO

SECTION
D.D.H. NO. I

January 1966

Scale 1" = 40'

H. Parlin

460