



32D05NW0039 11 THACKERAY

010

Diamond Drilling

Township of THACKERAY

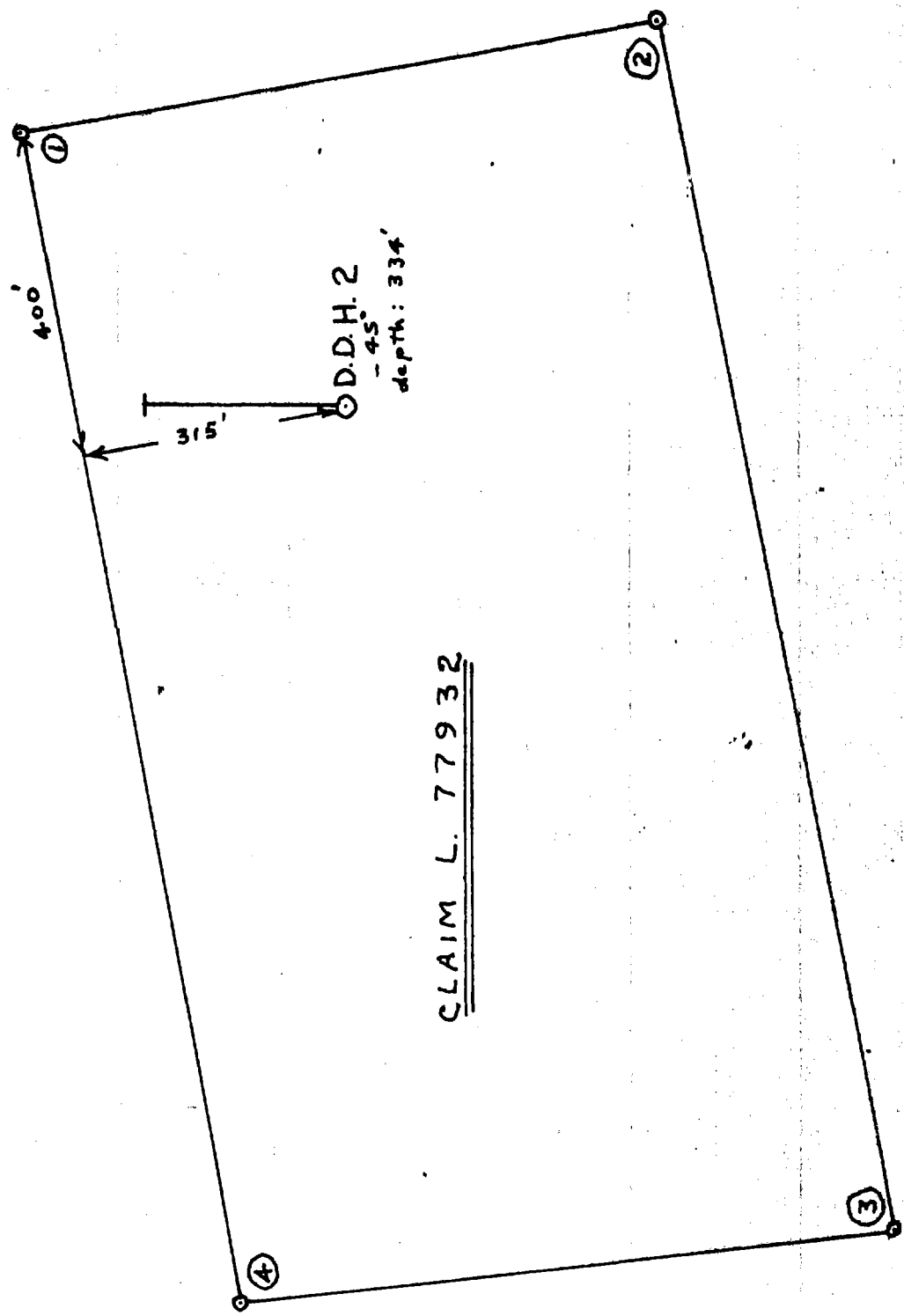
Report No. 11

Work performed by: International Bibis Tin Mines Limited

Claim No	Hole No	Footage	Date	Note
L 77932	2	234.0'	Nov/65	
L 87490	3	449.8'	Nov/65	

Notes:

← NORTH
RST.



CLAIM L. 77932

Scale: 1 in. = 200 ft.

Property International Bibis Tin Mines Ltd.
Thackery Township

Hole No. DDH #2

Latitude 24 + 50 S Bearing North (Grid) Page 1 of 2

Departure 36 + 00 W Dip 45° at collar

Location Surface (CL#77932) length 334 ft. Core Size AXT (1-1/4")

Elevation _____ Started November 10/65 Completed Nov. 13/65

FROM	TO	FORMATION	SAMPLE NO.	LENGTH FT.	% CU.	% NI	AU
0	21.0	<u>Casing</u> - (overburden)					
21.0	75.0	<u>Feldspar Melaphyre</u> - dark fine grained basalt or gabbro with large phenocrysts cream coloured Feldspar, some sections tuffaceous, considerable broken core, ground mass appears rhyolitic in places, considerable fine sulphides in places-mostly pyrite, numerous olivene filled slips - some sections have olivene phenocrysts - non-magnetic - 3 half inch calcite and olivene filled faults at 65.2, 66.4, & 67.4					
75.0	115.0	<u>Feldspar Melaphyre</u> - as above; coarser, more uniform, less olivene, negligible sulphides, numerous slips					
115.0	123.5	<u>Gabbro</u> - dark green, massive, medium grained					
123.5	125.0	<u>Gabbro</u> - lighter colored, more sulphides, mostly pyrite, about 3%	412	1.5	Nil	0.02	Nil
125.0	127.0	<u>Gabbro</u> - as above	411	2.0	0.04	0.02	Nil
127.0	128.5	<u>Gabbro</u> - as above, considerable white quartz	413	1.5	Tr	0.01	Tr
128.5	137.0	<u>Gabbro</u> - as above, lesser sulphides					

97+ CORE RECOVERY

Drilled by Bradley Bros. Ltd.

Logged by

H. Watts

H. Parliment

Property International Bibis Tin Mines Ltd.
Thackery TownshipHole No. DDH #2Latitude _____ Bearing _____ Page 2 of 2

Departure _____ Dip _____

Location _____ Length _____ Core Size _____

Elevation _____ Started _____ Completed _____

FROM	TO	FORMATION	SAMPLE NO.	LENGTH FT.	% CU	% NI	oz. Au
137.0	138.5	<u>Gabbro</u> - as above, much sulphide	414	1.5	Nil	0.02	Nil
138.5	142.0	<u>Gabbro</u> - as above					
142.0	142.5	<u>Gabbro</u> - as above, considerable fine sulphides, some fine sphalerite	415	0.5	0.02	Tr	Nil
142.5	277.0	<u>Gabbro</u> - medium to coarse grained, massive and uniform some hematite stained slips, some coarse serpentized sections, some minor fine sulphides, some calcite filled feinlets up to 1/2", numerous large (up to 1" diameter) phenocrysts feldspar near lower part of section.					
277.0	292.0m	<u>Dacite or Andesite</u> - very fine grained almost glassy, dull, rhyolitic in appearance, dark green color					
292.0	234.0	Fine grained green tuffaceous rock, similar to above, some sections showing feldspar phenocrysts					

Specimen taken at 308

END OF HOLE

CORE RECOVERY

Drilled by Bradley Bros. Ltd.Logged by H. Watts

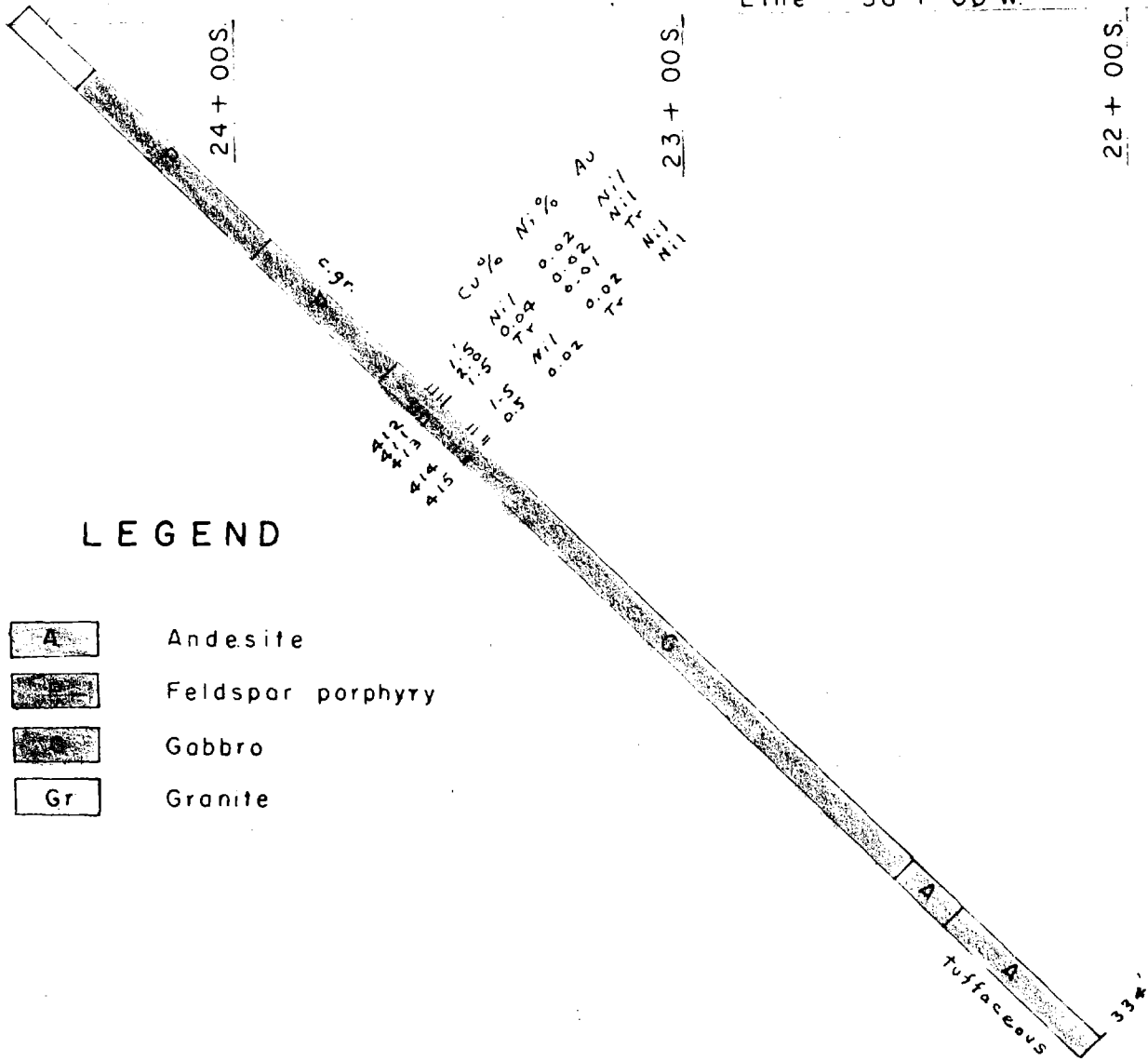
D.D.H. 2

Line 36 + 00 W.

24 + 00 S.

23 + 00 S.

22 + 00 S.



LEGEND

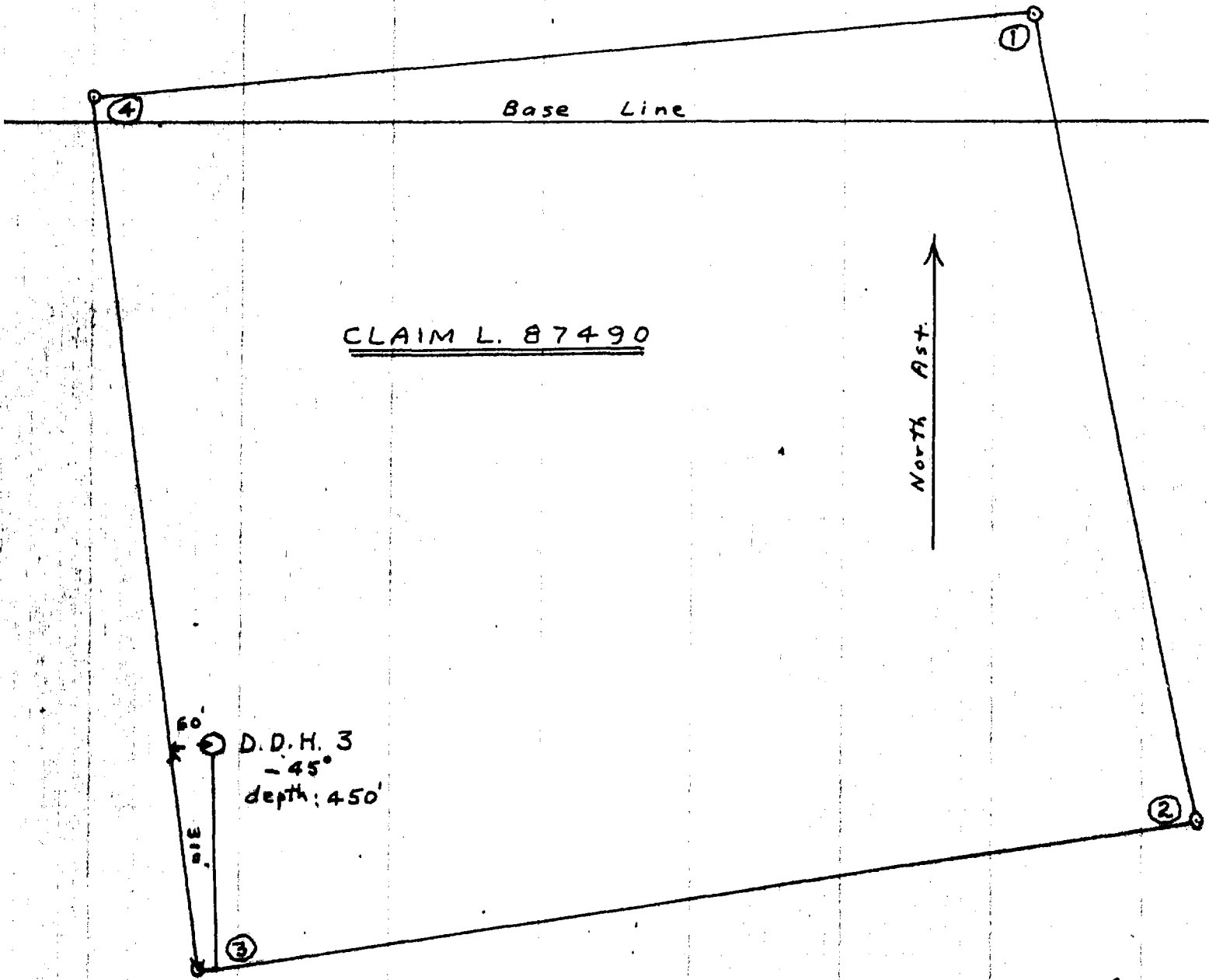
- A Andesite
- F Feldspar porphyry
- G Gabbro
- Gr Granite

INTERNATIONAL BIBIS TIN MINES LTD.
 THACKERAY TOWNSHIP, ONTARIO

SECTION
 D.D.H. NO. 2

January 1966 Scale: 1" = 40'

H. Parliament



CLAIM L. 87490

60'
D.D.H. 3
- 45°
depth: 450'

North Ast.

Scale: 1 in. = 200 ft.

Property International Bibis Tin Mines Ltd.
Thackery TownshipHole No. DDH #3Latitude 8 + 50 S Bearing S 25° E (Grid) Page 1 of 5Departure 48 + 00 W Dip 45° at collarLocation Surface CL#87490 Length 450 feet Core Size AXT (1-1/4"Elevation _____ Started Nov. 24, 1965 Completed Dec. 6, 1965

FROM	TO	FORMATION	SAMPLE NO.	LENGTH FT.	% CU	% NI	oz. AI
0	42.0	<u>Casing</u> - (Overburden)					
42.0	49.0	<u>Porphyry</u> - Reddish with feldspar phenocrysts up to 3/8"					
49.0	55.6	<u>Rhyolite</u> - fine, medium gray, dense, some pyrite (minor), much broken core (fractured), considerable surface rust.					
55.6	55.7	<u>Fault Zone</u> - at 45° to core axis					
55.7	57.2	<u>Lost Core</u> - Poplar vein					
57.2	58.2	<u>Rhyolite</u> - as above					
58.2	59.2	<u>Lost Core</u> - as above					
59.2	60.6	<u>Rhyolite</u> - as above					
60.6	61.4	<u>Lost Core</u> -					
61.4	66.0	<u>Rhyolite</u> - as above					
66.0	69.0	<u>Rhyolite</u> --as above, fair sulphide mineralization (up to 5%) mostly pyrite	416	3.0	Tr	Tr	Nil
69.0	70.0	<u>Broken Core</u> - Rhyolite fragments					
70.0	73.5	<u>Rholite</u> - much broken core, considerable sulphides including some possible chalcopyrite	417	3.5	Nil	0.01	Nil
73.5	75.0	<u>Rhyolite</u> - as above, a 2" fault zone at 73.8 at 45° to core axis					
					9	% CORE RECOVERY	

Drilled by Bradley Bros. Ltd. Logged by H. Watts

Property International Bibis Tin Mines Ltd.
Thackery TownshipHole No. DDH #3Latitude _____ Bearing _____ Page 2 of 5

Departure _____ Dip _____

Location _____ Length _____ Core Size _____

Elevation _____ Started _____ Completed _____

FROM	TO	FORMATION	SAMPLE NO.	LENGTH FT.	% CU	% NI	oz./t
75.0	80.0	<u>Rhyolite</u> - as above, some chalcopyrite visible, some spots and fine stringers magnetite	418	5.0	Tr	0.01	Nil
80.0	85.0	<u>Rhyolite</u> - considerable spotted magnetite, strongly magnetic in places					
85.0m	90.0	<u>Rhyolite</u> - as above	419	5.0	0.02	0.01	Nil
90.0	97.3	<u>Rhyolite</u> - as above, much broken core, lost core from 90.7 to 91.1, 91.6 to 92.0, 92.7 to 93.2, 93.9 to 94.4, 95.0 to 95.5 and 96.4 to 97.0					
97.8	98.7	<u>Rhyolite</u> - weakly magnetic, some fine sulphides evident, mostly pyrite - 1%					
98.7	99.2	<u>Lost Core</u> -					
99.2	100.1	<u>Rhyolite</u> - altered, numerous fine narrow quartz stringers					
100.1	100.5	<u>Fault</u> - 80° to core axis					
100.5	103.5	<u>Rhyolite</u> - altered, considerable quartz, pinkish in places					
103.5	105.0	<u>Rhyolite</u> - much quartz, fair sulphides, considerable pyrrhotite and pyrite	420	1.5	Tr	Tr	Nil
105.0	107.2	<u>Quartz</u> - white, relatively pure (barren)	421	2.2	Nil	Nil	Tr

% CORE RECOVERY

Drilled by Bradley Bros. Logged by H. Watts

Property International Bibis Tin Mines Ltd.
Thackery TownshipHole No. DDH #3Latitude _____ Bearing _____ Page 3 of 5

Departure _____ Dip _____

Location _____ Length _____ Core Size _____

Elevation _____ Started _____ Completed _____

FROM	TO	FORMATION	SAMPLE NO.	LENGTH FT.	% CU	% NI	oz.A
107.2	107.9	<u>Rhyolite</u> - some quartz, considerable fine sulphides, (5%) pyrite, pyrrhotite and some chalcopyrite	422	0.7	Tr	Tr	0.01
107.9	110.5	<u>Quartz</u> - impure, some rhyolite segments, considerable pyrrhotite, magnetic, about 5% sulphides in rhyolite segments	423	4.5	Tr	0.01	0.02
110.5	115.0	<u>Rhyolite</u> - considerable fine disseminated sulphides, up to 10%, mostly pyrite and pyrrhotite, with some chalcopyrite visible	424	4.5	0.01	0.01	0.01
115.0	120.0	<u>Rhyolite</u> - as above lesser	425	5.0	0.04	Tr	Tr
120.0	122.0	<u>Rhyolite</u> - similar to above, lesser sulphides (3 to 5%)	426	2.0	0.01	Tr	Tr
122.0	142.9	<u>Rhyolite</u> - minor sulphides, less than 2%, numerous quartz stringers, some spotted sections, much broken core					
142.9	143.7	<u>Lost Core</u> -					
143.7	147.7	<u>Rhyolite</u> - as above, some quartz, and numerous reddish stringers and blobs					
147.7	148.4	<u>Lost core</u> -					
% CORE RECOVERY							

Drilled by Bradley Bros.Logged by H. Watts

Property International Bibis Tin Mines Ltd.
Thackery TownshipHole No. DDH #3Latitude _____ Bearing _____ Page 4 of 5

Departure _____ Dip _____

Location _____ Length _____ Core Size _____

Elevation _____ Started _____ Completed _____

FROM	TO	FORMATION	SAMPLE NO.	LENGTH FT.	% CU	% NI	oz. A
148.4	160.5	<u>Rhyolite</u> - some greenish sections, spotted, negligible sulphides					
160.5	160.6	<u>Fault</u> - @ 35° to core axis					
160.6	201.6	<u>Rhyolite</u> - some darker magnetic sections, numerous fine quartz stringers, greenish in places, spotted in places					
201.6	201.9	<u>Quartz Vein</u> - white, 30° to core axis	427	0.3			
201.9	223.5	<u>Rhyolite</u> - as above - more uniform, more solid					
223.5	223.6	<u>Fault</u> -					
223.6	237.3	<u>Rhyolite</u> - as above					
237.3	238.5	<u>Feldspar Porphyry</u> - red - feldspar phenocrysts up to 1-1/2" long					
238.5	283.5	<u>Rhyolite</u> - as above - several narrow stringers containing pyrite, some hematite stained slips, blobs of pyrite occur infrequently					
283.5	284.0	<u>Lost Core</u> -					
284.0	285.0	<u>Rhyolite</u> - much broken core					
285.0	285.5	<u>Lost Core</u> - " " "					
285.5	286.2	<u>Rhyolite</u> - " " "					

% CORE RECOVERY

Drilled by Bradley Bros. Logged by H. Watts

Property International Bibis Tin Mines Ltd.
Thackery TownshipHole No. DDH #3Latitude _____ Bearing _____ Page 5 of 5

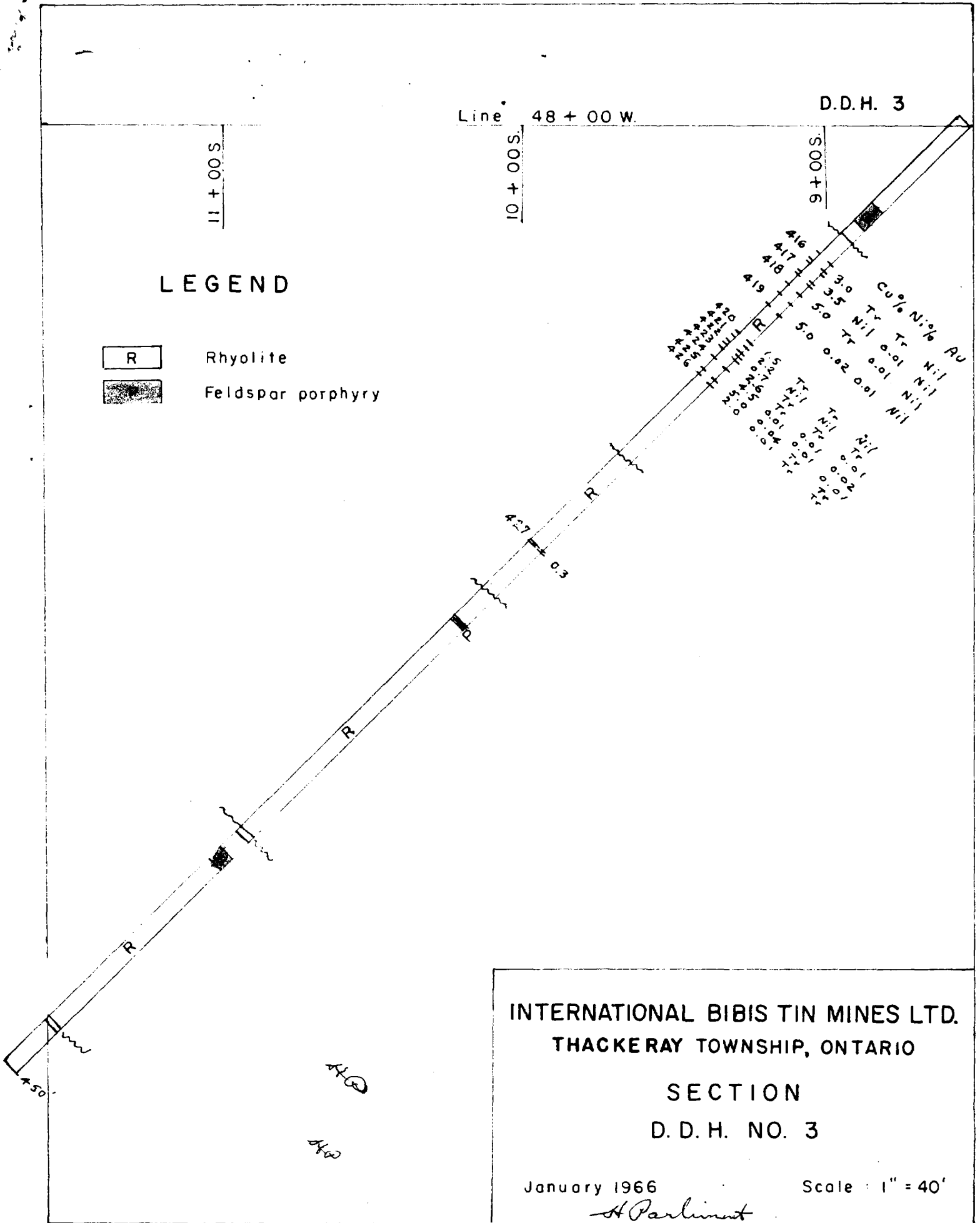
Departure _____ Dip _____

Location _____ Length _____ Core Size _____

Elevation _____ Started _____ Completed _____

FROM	TO	FORMATION	SAMPLE NO.	LENGTH FT.	% CU	% NI	oz.A	
286.2	287.2	<u>Lost Core</u> - much broken core						
287.2	288.9	<u>Rhyolite</u> - " " "						
288.9	289.8	<u>Lost Core</u> - " " "						
289.8	292.5	<u>Rhyolite</u> - " " "						
292.5	293.0	<u>Lost Core</u> -						
293.0	297.0	<u>Rhyolite</u> - broken core						
297.0	298.0	<u>Lost Core</u> -						
298.0	337.0	<u>Rhyolite</u> - more solid, greenish in places, numerous hematite stained slips, spotted in places, some fine quartz stringers						
337.0	339.5	<u>Possible Fault Zone ??</u> pale greenish, broken up						
339.5	347.2	<u>Rhyolite</u> - as above						
347.2	352.2	<u>Porphyry</u> - red - with feldspar phenocrysts up to 1/2"						
352.2	427.8	<u>Rhyolite</u> - as above						
427.8	428.5	<u>Fault</u> -						
428.5	449.8	<u>Rhyolite</u> - as above						
END OF HOLE								
							% CORE RECOVERY	

Drilled by Bradley Bros.Logged by H. Watts*H. Parliment*



Line 48 + 00 W.

D.D.H. 3

11 + 00 S

10 + 00 S

9 + 00 S

Sample No.	Depth (ft)	Cu%	Ni%	Pb
416	3.0	Tr	Tr	Nil
417	3.5	Nil	Tr	Nil
418	5.0	Tr	Tr	Nil
419	5.0	0.02	0.01	Nil

416
 417
 418
 419
 420
 421
 422
 423
 424
 425
 426
 427
 428
 429
 430
 431
 432
 433
 434
 435
 436
 437
 438
 439
 440
 441
 442
 443
 444
 445
 446
 447
 448
 449
 450

INTERNATIONAL BIBIS TIN MINES LTD.
 THACKERAY TOWNSHIP, ONTARIO

SECTION
 D. D. H. NO. 3

January 1966

Scale : 1" = 40'

A. Parlin