



32D05SE0069 16 BEN NEVIS

010

DIAMOND DRILLING

TOWNSHIP: Ben Nevis

REPORT No.: 16

WORK PERFORMED BY: S. Fleming

<u>CLAIM No.</u>	<u>HOLE No.</u>	<u>FOOTAGE</u>	<u>DATE</u>	<u>NOTE</u>
L.48456	1	491'	Oct-Nov/46	
	2	451'	Nov/46	
	3	714'	Nov/46	
	5	535'	Feb/47	
	6	755'	Feb/47	
	7	795'	Feb-March/47	
	L.48455	4	31'	Nov/46
4A		373'	Nov-Dec/46	
<u>8</u>		<u>4145'</u>		

NOTES:

PROPERTY Bell MacGregor Property
 Ben Nevis Twp.

HOLE NUMBER 1
 SHEET NUMBER _____
 SECTION FROM _____ TO _____

DIAMOND DRILL RECORD

LOCATION: LAT. Approx 300' NE of #3 post of Claim 48456 to galena pit,
 DEP. then 100' S 15° E to No. 1 set up. STARTED 10:30 a.m. Oct. 28/46
 ELEVATION OF COLLAR _____ COMPLETED 12 p.m. Nov. 5, 1946
 DATUM _____ ULTIMATE DEPTH 491'
 DIRECTION AT START: BEARING N 15° W PROPOSED DEPTH _____
 DIP Angle: 45°

DEPTH FEET	FORMATION	SAMPLE NO.	WIDTH OF SAMPLE	GOLD \$	SLUDGE GOLD \$
	<u>Hor. Dis. 350 ft., Core Lost - None</u>				
	<u>Water: Lost at 160' regained at 225' (cementing)</u>				
	<u>Delays: Machine breakdown, and cementing.</u>				
	<u>Strike of Fault Zone approx. S 70° East</u>				
	<u>Dip of Zone: 80° to south.</u>				
<u>0-5.4</u>					
<u>5.4-53</u>	<u>Dacite</u>				
<u>53-97</u>	<u>Gray feldspar porphyry.</u>				
<u>97-123</u>	<u>Sheared diorite</u>				
<u>123-123.3</u>	<u>Quartz and calcite with galena</u>				
<u>123.3-151</u>	<u>Dacite</u>				
<u>151-157</u>	<u>Grey feldspar porphyry.</u>				
<u>157-200</u>	<u>Dacite</u>				
<u>200-212</u>	<u>Gray feldspar porphyry.</u>				
<u>212-216</u>	<u>Dacite shattered zone rusty (fault)</u>				
<u>216-240</u>	<u>Dacite</u>				
<u>240-242</u>	<u>Dacite altered, mineralized (split)</u>				
<u>242-247</u>	<u>" " " "</u>				
<u>247-252</u>	<u>" " " "</u>				
<u>252-296</u>	<u>Dacite altered (mottled appearance with inclusions of light chlorite and black specks, also veinlets of granitoid material.</u>				

NORTHERN MINER PRESS LIMITED, TORONTO-STOCK FORM No. 801 REV. 8/44

DRILLED BY _____

SIGNED S. Fleming

PROPERTY Bell MacGregor Property

HOLE NUMBER 1

SHEET NUMBER 2

DIAMOND DRILL RECORD

SECTION FROM TO

LOCATION: LAT.....
 DEP.....
 ELEVATION OF COLLAR.....
 DATUM.....
 DIRECTION AT START: BEARING.....
 DIP.....

STARTED.....
 COMPLETED.....
 ULTIMATE DEPTH.....
 PROPOSED DEPTH.....

DEPTH FEET	FORMATION	SAMPLE No.	WIDTH OF SAMPLE	GOLD #	SLUDGE GOLD #		
296-301	Same as above (split)						
301-389	Dacite.						
389-408	Gray syenite with reddish tinge. Section from 390-395 (split)						
408-491	Dacite (bottom of hole)						
Nov. 6th, 1946 - General Remarks - D D H No. 1							
This hole gave some very nice geology. The small galena vein was intersected at footage 123, but was only three inches wide. Some fresh dikes of gray feldspar porphyry were cut, and one dike of syenite. The vein section has a very mottled appearance and contains numerous red streaks of granitoid material which shows that we are within the area of the effects of the granodiorite boss to the East. The pyrite mineralization was very fine, and no other minerals were noted so am only assaying samples from this hole for gold. A fracture zone was intersected at footage 212 to 216 full of rust and this is likely the fault zone. The core fifty feet beyond the vein material was also very mottled, with inclusions of light chlorite and dark specks. (Hornblende). The hole had to be cemented, and from then on made very good progress. No core was lost.							

NORTHERN MINER PRESS LIMITED, TORONTO-STOCK FORM No. 501 REV. 9/44

DRILLED BY SIGNED.....

4

Sample Sheet

PROPERTY Bell MacGregor Property
Ben Nevis Twp.

Nov 6/46

DIAMOND DRILL RECORD

HOLE NUMBER 1

SHEET NUMBER

SECTION FROM TO

LOCATION: LAT.....
 DEP.....
 ELEVATION OF COLLAR.....
 DATUM.....
 DIRECTION AT START: BEARING.....
 DIP.....

STARTED.....
 COMPLETED.....
 ULTIMATE DEPTH.....
 PROPOSED DEPTH.....

DEPTH FEET	FORMATION	SAMPLE NO.	WIDTH OF SAMPLE	GOLD \$	SLUDGE GOLD \$
Sample No. 1		Sample No. 5			
Location:	From footage 240 to 242	Location:	From footage 390 to 395		
Width	24 inches	Width:	60 inches		
Formation	Altered mottled dacite	Formation:	Gray syenite with reddish tinge.		
Mineralization:	Well mineralized with fine pyrite.	Mineralization:	Some fine pyrite.		
Sample No. 2					
Location	From footage 242 to 247				
Width	60 inches				
Formation	altered mottled dacite.				
Mineralization:	Well mineralized with fine pyrite.				
Sample No. 3					
Location	From footage 247 to 252				
Width	60 inches				
Formation	Altered mottled dacite				
Mineralization:	Well mineralized with fine pyrite.				
Sample No. 4					
Location	From footage 296 to 301				
Width	60 inches				

Formation: Gray syenite with reddish tinge.
 Mineralization: Some fine pyrite.
 DRILLED BY.....

SIGNED.....

W

PROPERTY Bell MacGregor Property

HOLE NUMBER 2

SHEET NUMBER 1

SECTION FROM TO

DIAMOND DRILL RECORD

LOCATION: LAT. 200' west; and 50' south of #1 D.D.H. set up
 DEP.
 ELEVATION OF COLLAR
 DATUM Water Returned. Angle Started: 45°, finished 40°
 DIRECTION AT START: BEARING Magnetic North
 DIP

Lost core - None
 STARTED 2 p.m. Nov. 7/46
 COMPLETED 7 p.m. Nov. 11/46
 ULTIMATE DEPTH 451' Hor. dis. 320'
 PROPOSED DEPTH
 Delays: None

DEPTH FEET	FORMATION	SAMPLE No.	WIDTH OF SAMPLE	GOLD \$	SLUDGE GOLD \$
0-5	Casing				
5-92	Feldspar porphyry (large phenocrysts)				
92-125	Diorite				
125-130	Altered diorite (split)				
130-135	" " "				
135-140	" " "				
140-145	" " "				
145-150	" " "				
150-155	" " "				
155-160.6	" " "				
160.6-165.6	" " "				
165.6-199.5	Feldspar porphyry (large crystals)				
199.5-233	Altered diorite.				
233-415	Feldspar porphyry (large crystals)				
415-451	Diorite. bottom of hole.				
General Remarks: In this hole we did not intersect the small galena fracture. The geology in this hole was quite different than in D. D. H. No. 1. The mineralized section was intersected much further to the South, and the rocks in this section have been displaced. A great deal of shattering was in evidence in this hole. A wide dike of diorite, or a phase of early diabase runs North and South, and it looks as tho the hole intersected the eastern edge of it, it may have been the cause of the dislocation of the rocks and mineralized section as noted in this hole.					

NORTHERN MINER PRESS LIMITED, TORONTO—STOCK FORM No. 501 REV. 9/44

DRILLED BY

SIGNED

7

PROPERTY.....

HOLE NUMBER 2

SHEET NUMBER 2

SECTION FROM..... TO.....

DIAMOND DRILL RECORD

LOCATION: LAT.....
 DEP.....

STARTED.....

ELEVATION OF COLLAR.....

COMPLETED.....

DATUM.....

ULTIMATE DEPTH.....

DIRECTION AT START: BEARING.....
 DIP.....

PROPOSED DEPTH.....

DEPTH FEET	FORMATION	SAMPLE NO.	WIDTH OF SAMPLE	GOLD \$	SLUDGE GOLD \$
About 100 feet to the West the Eastern scarp of a very powerful North and South break is to be noted. Much more feldspar porphyry was out in this hole, very young, and fresh looking, with large well defined white phenocrysts (albite crystals). The mineral pyrite is associated with the veinlets of light silicious material, in places these veinlets have a reddish tinge. There were no delays, or lost core in this hole.					
Sample Sheet					
Sample No. 6					
Location	From footage 125 to 130				
Formation	Altered diorite.				
Mineralization:	Well mineralized with pyrite (a little quartz, and calcite)				
Sample No. 7					
Location	From footage 130 to 135				
Width	60 inches				
Formation	Altered diorite				
Mineralization:	Well mineralized with pyrite (a little quartz & calcite)				
Sample No. 8					
Location	From footage 135 to 140				
Width	60 inches				
Formation	Altered diorite.				

NORTHERN MINER PRESS LIMITED, TORONTO—STOCK FORM NO. 501 REV. 9/44

Mineralization: Pyrite (a little quartz & calcite, reddish tinge to quartz)

DRILLED BY..... SIGNED.....

PROPERTY.....

HOLE NUMBER 2

SHEET NUMBER 3

SECTION FROM..... TO.....

DIAMOND DRILL RECORD

LOCATION: LAT.....
 DEP.....

STARTED.....

ELEVATION OF COLLAR.....

COMPLETED.....

DATUM.....

ULTIMATE DEPTH.....

DIRECTION AT START: BEARING.....
 DIP.....

PROPOSED DEPTH.....

DEPTH FEET	FORMATION	SAMPLE NO.	WIDTH OF SAMPLE	GOLD \$	SLUDGE GOLD \$		
Sample No. 9							
Location	From footage 145 to 150						
Width	60 inches						
Formation	Altered diorite.						
Mineralization:	Pyrite, (a little quartz and calcite, reddish tinge to quartz)						
Sample No. 10							
Location	From footage 150 to 155						
Width	60 inches						
Formation	Altered diorite						
Mineralization:	Well mineralized with pyrite.						
Sample No. 11							
Location	From footage 155 to 160						
Width	60 inches						
Formation	Altered diorite						
Mineralization:	Well mineralized with pyrite.						
Sample No. 12							
Location	From footage 160 to 166.6, Width 60 inches, Formation: Altered diorite.						
Mineralization:	Well mineralized with pyrite. (a little quartz, section very red & rusty)						

NORTHERN MINER PRESS LIMITED, TORONTO—STOCK FORM NO. 501 REV. 9/44

DRILLED BY.....

SIGNED.....

PROPERTY Bell Macgregor Property

HOLE NUMBER 3

SHEET NUMBER 1

SECTION FROM TO

DIAMOND DRILL RECORD

LOCATION: LAT. Eighty feet NW of No. 2 DDH
 DEP. Angle Starting - 45 degrees, finishing 40°

STARTED 10 a.m. Nov. 13/46

ELEVATION OF COLLAR
 DATUM Water returned after cementing. Delays: broken crank shaft & cementing three times.

COMPLETED Midnight Nov. 26/46

DIRECTION AT START: BEARING S 80 degrees west
 DIP

ULTIMATE DEPTH 714 ft.
 Lost Core: None
 PROPOSED DEPTH

DEPTH FEET	FORMATION	SAMPLE NO.	WIDTH OF SAMPLE	GOLD \$	SLUDGE GOLD \$
0-4	Casing				
4-158	Diorite, or fine grained gabbro				
158-160	Volcanic fragmentals (split)				
160-165	" " "				
165-170	" " "				
170-175	" " "				
175-185	" " "				
185-190	" " "				
190-220	" " "				
220-225	" " "				
225-342	" " "				
342-344	" " shattered zone				
344-375	" " sheared				
375-395	" " " soft				
395-400	" " " (split)				
400-405	" " " " "				
405-409	" " " very soft				
409-548	" " "				
548-558	Gray syenite porphyry				
558-595	Volcanic fragmentals				
595-700	Geldspar porphyry				
700-714	Volcanic fragmentals				

NORTHERN MINER PRESS LIMITED, TORONTO-STOCK FORM NO. 501 REV. 9/44

DRILLED BY

SIGNED

✓

PROPERTY Bell Macgregor Property

HOLE NUMBER No. 3

SHEET NUMBER 2

SECTION FROM TO

DIAMOND DRILL RECORD

LOCATION: LAT.....
 DEP.....
 ELEVATION OF COLLAR.....
 DATUM.....
 DIRECTION AT START: BEARING.....
 DIP.....

STARTED.....
 COMPLETED.....
 ULTIMATE DEPTH.....
 PROPOSED DEPTH.....

DEPTH FEET	FORMATION	SAMPLE NO.	WIDTH OF SAMPLE	GOLD \$	SLUDGE GOLD \$
General Remarks: The general strike of the formation in this immediate locality that we are					
drilling is about N 15 degrees West (mag), excepting for the feldspar porphyry dikes or stocks					
which strike about NE and SW.					
At the location of the Drill set up there is evidence of a large zone of weakness connecting					
Verna Lake with Keith Lake, this forms a well defined depression with steep well defined fault					
scarps, within which lie Keith and Mary creeks. The scarps have a nearly vertical dip, and if					
any slightly to the East. The width between the scarps at point of drilling is about 350 feet.					
D.D.H. No. 3 was drilled to explore this zone of weakness, and a band of volcanic fragmentals					
more than 300 feet wide was encountered with intrusions of gray syenite, and feldspar porphyry.					
The fragmentals are more or less mineralized with pyrite thru out, with the pyrite mineralization					
being a little heavier at the top of the hole (the East contact between the vol frag, and the					
diorite, or fine grained gabbro.)					
Eight samples were taken of the best sections, and in the upper part of the vol frag. the pyrite					
was enclosed within dark patches.					
The volcanic fragmentals were badly fractured in places and it was necessary to cement three					
times.					
This is the most likely locality for an ore deposition, but owing to the fact that this band of					
fragmen als lie wholly within a deep depression and under the lakes and creek bed, a large					
drilling programme would be necessary to explore same, and if the samples forwarded do not give					
any returns, any further expenditure is unwarranted.					

NORTHERN MINER PRESS LIMITED, TORONTO--STOCK FORM No. 801 REV. 9/44

DRILLED BY.....

SIGNED.....

8

PROPERTY Bell Macgregor Property

HOLE NUMBER 3

SHEET NUMBER 3

SECTION FROM TO

DIAMOND DRILL RECORD

LOCATION: LAT.....
 DEP.....
 ELEVATION OF COLLAR.....
 DATUM.....
 DIRECTION AT START: BEARING.....
 DIP.....

STARTED.....
 COMPLETED.....
 ULTIMATE DEPTH.....
 PROPOSED DEPTH.....

DEPTH FEET	FORMATION	SAMPLE No.	WIDTH OF SAMPLE	GOLD \$	SLUDGE GOLD \$		
Sample No. 13							
Location from footage 158 to 160							
Width 24 inches							
Formation - Volcanic fragmentals							
Mineralization - Well mineralized with cubic pyrite, dark patches around pyrite.							
Sample No. 14							
Location - From footage 160 to 165							
Width - 60 inches							
Formation - Volcanic fragmentals							
Mineralization - Mineralization same as No. 13							
Sample No. 15							
Location- from footage 165 to 170							
Width - 60 inches							
Formation - volcanic fragmentals							
Mineralization - Fine grained pyrite, with dark patches around pyrite.							
Sample No. 16							
Location-From footage 170 to 175							
Width - 60 inches							
Formation - volcanic fragmentals							
Mineralization - fine grained pyrite, with dark patches around pyrite.							

NORTHERN MINER PRESS LIMITED, TORONTO—STOCK FORM NO. 501 REV. 9/44

DRILLED BY.....

SIGNED.....

6

PROPERTY Bell Macgregor Property

HOLE NUMBER 3

SHEET NUMBER 4

SECTION FROM TO

DIAMOND DRILL RECORD

LOCATION: LAT.....
 DEP.....
 ELEVATION OF COLLAR.....
 DATUM.....
 DIRECTION AT START: BEARING.....
 DIP.....

STARTED.....
 COMPLETED.....
 ULTIMATE DEPTH.....
 PROPOSED DEPTH.....

DEPTH FEET	FORMATION	SAMPLE No.	WIDTH OF SAMPLE	GOLD \$	SLUDGE GOLD \$
Sample No. 17					
Location - from footage 185 to 190					
Width - 60 inches					
Formation - volcanic fragmentals					
Mineralization - Same as No. 16					
Sample No. 18					
Location - from footage 220 to 225					
Width - 60 inches					
Formation - volcanic fragmentals					
Mineralization - Same as No. 17					
Sample No. 19					
Location - From footage 395 to 400					
Width - 60 inches					
Formation - volcanic fragmentals					
Mineralization - fine pyrite.					
Sample No. 20					
Location - from footage 400 to 405					
Width - 60 inches					
Formation - volcanic fragmentals					
Mineralization - fine cubic pyrite.					

NORTHERN MINER PRESS LIMITED, TORONTO-STOCK FORM No. 501 REV. 9/44

DRILLED BY

SIGNED

10

PROPERTY Bell Macgregor Property

HOLE NUMBER 5

SHEET NUMBER

DIAMOND DRILL RECORD

SECTION FROM TO

LOCATION: LAT. 200' N 80° E, from No. 3 and to drill directly under same.
 DEP.
 ELEVATION OF COLLAR
 DATUM angle starting -45°, finishing Not known (no acid to take test)
 DIRECTION AT START: BEARING S 80° W
 DIP

STARTED 6 p.m. Friday Feb. 7/47
 COMPLETED 6 p.m. Feb. 13/47
 Water lost at footage 170
 ULTIMATE DEPTH 535 ft.
 Lost Core - 8 ft.
 PROPOSED DEPTH
 HOR dis. 300 ft.

DEPTH FEET	FORMATION	SAMPLE NO.	WIDTH OF SAMPLE	GOLD \$	SLUDGE GOLD \$
0 - 10	Casing				
10 - 38	Feldspar porphyry				
38 - 119	Gabbro				
119-143	" shattered, much calcite on fractures				
143-186	"				
186-236	Feldspar porphyry.				
236-270	Gabbro				
270-274	Lost core				
274-310	Gabbro				
310-334	Gabbro shattered calcite on fractures with pyrite				
334-335	" " " " " (split)				
335-369	Gabbro				
369-374	" " " " " pyrite				
374-391	Gabbro fine grained				
391-392	Gabbro very silicious				
392-394	Lost core				
394-396	Gabbro				
396-397	Lost core				
397-448	Gabbro, very silicious				
448-450	Lost core				
450-451	Gabbro				

NORTHERN MINER PRESS LIMITED, TORONTO-STOCK FORM NO. 801 REV. 9/44

DRILLED BY

SIGNED

13

PROPERTY Bell Macgregor Property

HOLE NUMBER 5

SHEET NUMBER 3

SECTION FROM TO

DIAMOND DRILL RECORD

LOCATION: LAT.
 DEP.
 ELEVATION OF COLLAR
 DATUM
 DIRECTION AT START: BEARING
 DIP

STARTED
 COMPLETED
 ULTIMATE DEPTH
 PROPOSED DEPTH

DEPTH FEET	FORMATION	SAMPLE NO.	WIDTH OF SAMPLE	GOLD \$	SLUDGE GOLD \$
Sample No. 22					
Location - From footage 488 to 493					
Width - 60 inches					
Formation - Volcanic fragmentals (dacite) tuff.					
Mineralization - Fine pyrite, with calcite in fractures. Ag					
Sample No. 23					
Location - from footage 493 to 498					
Width - 60 inches					
Formation - Volcanic fragmentals (dacite tuff)					
Mineralization - Fine white pyrite. Ag					
Sample No. 24					
Location - From footage 508 to 513					
width - 60 inches					
Formation - Volcanic fragmentals (dacite tuff)					
Mineralization - Fine white pyrite, with black streaks. Ag					
Sample No. 25					

DRILLED BY

SIGNED

PROPERTY Bell Macgregor Property

HOLE NUMBER 5

SHEET NUMBER 4

SECTION FROM TO

DIAMOND DRILL RECORD

LOCATION: LAT.
 DEP.

ELEVATION OF COLLAR

DATUM

DIRECTION AT START: BEARING
 DIP

STARTED

COMPLETED

ULTIMATE DEPTH

PROPOSED DEPTH

DEPTH FEET	FORMATION	SAMPLE No.	WIDTH OF SAMPLE	GOLD \$	SLUDGE GOLD \$
Sample No. 25					
Location - from footage 513 to 518					
Width - 60 inches					
Formation - Volcanic fragmentals (dacite tuff)					
Mineralization - Fine white pyrite, with calcite on slips. Ag.					
Sample No. 26					
Location - from footage 518 to 521					
Width - 36 inches					
Formation - Volcanic fragmentals (dacite tuff)					
Mineralization - Fine white pyrite on edges of silicious veinlets. Ag, Au.					

DRILLED BY

SIGNED

PROPERTY Bell Macgregor Property

HOLE NUMBER 6

SHEET NUMBER 1

SECTION FROM TO

DIAMOND DRILL RECORD

LOCATION: LAT. Set up 250' NE of No. 5 location
DEP. Delays: freezing of pipe line three times
and once cementing.
 ELEVATION OF COLLAR
 DATUM angle starting 45°; finishing 50°
 BEARING S 80° W
 DIRECTION AT START: water lost at 340 ft., but regained after cementing

STARTED 6 p.m. Feb. 16, 1947
 COMPLETED 4 p.m. Feb. 25/47
lost core 2'
 ULTIMATE DEPTH 755'
 PROPOSED DEPTH 450'

DEPTH FEET	FORMATION	SAMPLE NO.	WIDTH OF SAMPLE	GOLD \$	SLUDGE GOLD \$
0-41	Casing core				
41-197	Gabbro				
197-243	Feldspar Porphyry				
243-268	Gabbro				
268-289	Feldspar porphyry				
289-312	Gabbro				
312-322	Feldspar porphyry				
322-457	Gabbro, with reddish phases.				
457-462.6	Shattered gabbro with veinlets of grano diorite (split)				
462.6-465.6	Gabbro				
465.6-470.6	Shattered gabbro, with grano veinlets (split)				
470.6-475.6	" " " " " "				
475.6-616	Gabbro				
616-621	Contact zone very silicious (split)				
621-720	Volcanic fragmentals				
720-722	Lost core				
722-755	Volcanic Fragmentals.				
	Bottom of Hole.				

DRILLED BY SIGNED

PROPERTY Bell Macgregor Property

HOLE NUMBER 6

SHEET NUMBER 2

SECTION FROM TO

DIAMOND DRILL RECORD

LOCATION: LAT.
 DEP.
 ELEVATION OF COLLAR
 DATUM
 DIRECTION AT START: BEARING
 DIP

STARTED
 COMPLETED
 ULTIMATE DEPTH
 PROPOSED DEPTH

DEPTH FEET	FORMATION	SAMPLE NO.	WIDTH OF SAMPLE	GOLD \$	SLUDGE GOLD \$
General Remarks: This hole was put down 200 ft. north of No. 5 to intersect the contact between the gabbro, and the volcanic fragmentals. From footage 457 to 475.6, a rather interesting shattered zone in the gabbro was intersected. Delays in this hole was caused by having to cement, and the pipe line freezing three times. The contact zone was rather indefinite, the two formation more or less merging, and not clear cut like in No. 5. Four samples were taken.					
Sample No. 28					
Location - From footage 457, to 462.6					
Width - 66 inches					
Formation - altered gabbro, with veinlets of grano diorite.					
Mineralization - Pyrite with black streaks. Au & Ag.					
Sample No. 29					
Location - from footage 465.6 to 470.6					
Width - 60 inches					
Formation - shattered gabbro with grano diorite veinlets.					
Mineralization - Pyrite, calcite, and black streaks. Au & Ag.					

DRILLED BY

SIGNED

PROPERTY Bell Macgregor Property

HOLE NUMBER 6

SHEET NUMBER 3

SECTION FROM TO

DIAMOND DRILL RECORD

LOCATION: LAT.
 DEP.
 ELEVATION OF COLLAR
 DATUM
 DIRECTION AT START: BEARING
 DIP

STARTED
 COMPLETED
 ULTIMATE DEPTH
 PROPOSED DEPTH

DEPTH FEET	FORMATION	SAMPLE NO.	WIDTH OF SAMPLE	GOLD \$	SLUDGE GOLD \$
Sample No. 30					
Location - from footage 470.6 to 475.6					
Width - 60 inches					
Formation - Shattered gabbro, grano diorite veinlets.					
Mineralization - Pyrite, calcite, and black streaks.					
Sample No. 31					
Location - From footage 616 to 621					
Width - 60 inches					
Formation - Contact zone, mixture of very silicious gabbro and volcanic fragmentals (dacite tuff).					
Mineralization - Some coarse pyrite, a little calcite on slips.					

NORTHERN MINER PRESS LIMITED, TORONTO—STOCK FORM No. 501 REV. 9/44

DRILLED BY

SIGNED

PROPERTY Bell Macgregor Property

HOLE NUMBER 7

SHEET NUMBER

DIAMOND DRILL RECORD

SECTION FROM TO

LOCATION: LAT. 600' N 30° W from No. 6 set up
 DEP.

STARTED 11 a.m. Friday, Feb. 28/47

ELEVATION OF COLLAR

COMPLETED 8 a.m. Sunday, March 9/47
 Water lost at 240'

DATUM Angle starting 45°, finishing 37°

ULTIMATE DEPTH 795'

DIRECTION AT START: BEARING N 15° West

Delays None, but slow drilling due to broken ground.

DIP Lost core - 12'

PROPOSED DEPTH Broken ground.

Horl dis. 500'

DEPTH FEET	FORMATION	SAMPLE NO.	WIDTH OF SAMPLE	GOLD \$	SLUDGE GOLD \$
0-2	Casing				
2-134	Adnesite				
134-136	Gray porphyry				
136-167	Andesite				
167-169.6	Quartz vein (barren)				
169.6-233	Andesite				
233-252	Andesite (shattered zone)				
252-254	Lost core (2 ft.)				
254-278	Andesite (shattered zone)				
278-286	Very silicious material				
286-322	Andesite				
322-329	Feldspar porphyry				
329-336	Andesite				
336-362	Feldspar porphyry				
362-378	Andesite				
378-380	Volcanic fragmentals (rhyolite tuff)				
380-382	Lost core (2 ft.)				
382-391	Volcanic fragmentals (rhyolite tuff)				
391-392	Lost core (one foot)				
392-407	Volcanic fragmentals				
407-430	Grano diorite				

NORTHERN MINER PRESS LIMITED, TORONTO—STOCK FORM No. 801 REV. 9/44

DRILLED BY

SIGNED

PROPERTY Bell Macgregor Property

HOLE NUMBER 7

SHEET NUMBER 2

SECTION FROM TO

DIAMOND DRILL RECORD

LOCATION: LAT.
 DEP.
 ELEVATION OF COLLAR
 DATUM
 DIRECTION AT START: BEARING
 DIP

STARTED
 COMPLETED
 ULTIMATE DEPTH
 PROPOSED DEPTH

DEPTH FEET	FORMATION	SAMPLE NO.	WIDTH OF SAMPLE	GOLD \$	SLUDGE GOLD \$
430-431	Lost core (one foot)				
431-436	Grano diorite				
436-441	Volcanic fragmentals (rhyolite tuff)				
441-507	Grano diorite				
507-508	Andesite				
508-509.5	Quartz vein (split)				
509.5-543	Volcanic fragmentals				
543-548	Volcanic fragmentals (split)				
548-555	" "				
555-560	" " "				
560-561	Lost core (one foot)				
561-565	Volcanic fragmentals (split)				
565-581	" "				
581-585	" " "				
585-590	" " "				
590-595	" " "				
595-599	" " "				
599-630	Dacite				
630-635	Quartz vein very little mineral some calcite (split)				
635-674	Dacite				

DRILLED BY

SIGNED

PROPERTY Bell Macgregor Property

HOLE NUMBER 7

SHEET NUMBER 3

SECTION FROM TO

DIAMOND DRILL RECORD

LOCATION: LAT.....

DEP.....

ELEVATION OF COLLAR.....

DATUM.....

DIRECTION AT START: BEARING.....

DIP.....

STARTED.....

COMPLETED.....

ULTIMATE DEPTH.....

PROPOSED DEPTH.....

DEPTH FEET	FORMATION	SAMPLE No.	WIDTH OF SAMPLE	GOLD \$	SLUDGE GOLD \$
674-679	Volcanic fragmentals (rhyolite tuff) (split)				
679-680	Dacite				
680-684	Volcanic fragmentals (rhyolite tuff)				
684-703	Dacite				
703-736	Volcanic fragmentals				
736-768	Grano diorite				
768-775	Volcanic fragmentals (altered and shattereded)				
775-777	Lost core (two feet) " "				
777-778	Volcanic fragmentals " "				
778-779	Lost core (one foot)				
779-785	Volcanic fragmentals " "				
785-786	Lost core (one foot)				
786-792	Volcanic fragmentals " "				
792-793	Lost core (one foot)				
793-795	Volcanic fragmentals " "				
<p>General Remarks: This hole was drilled in a Northerly direction to intersect the large sheared zone of volcanic fragmentals that strike East from the vicinity of the grano diorite boss, this zone of weakness following the general trend of the Mary creek and the axis of Mary Lake. The ground intersected was very badly broken, and made for very blocky drilling.</p>					

NORTHERN MINER PRESS LIMITED, TORONTO—STOCK FORM No. 801 REV. 9/44

DRILLED BY.....

SIGNED.....

PROPERTY Bell Macgregor Property

HOLE NUMBER 7

SHEET NUMBER 4

SECTION FROM TO

DIAMOND DRILL RECORD

LOCATION: LAT.
 DEP.
 ELEVATION OF COLLAR
 DATUM
 DIRECTION AT START: BEARING
 DIP

STARTED
 COMPLETED
 ULTIMATE DEPTH
 PROPOSED DEPTH

DEPTH FEET	FORMATION	SAMPLE NO.	WIDTH OF SAMPLE	GOLD \$	SLUDGE GOLD \$
Two well defined dikes of grano diorite was intersected and the core in general was very interesting, the volcanic fragmentals were pritized more or less thruout, and in some sections, contained black streaks and patches. No base metals where located in the hole. Ten samples where taken to be assayed for gold. Twelve feet of core was lost. The hole was extended as far as the capacity of the drill would permit.					
Sample No. 32					
Location -	From footage 508 to 509.4				
Width -	16 inches				
Formation -	Silicious material				
Mineralization -	A little chalcopryrite, and pyrite (Au)				
No. 33					
Location -	From footage 543 to 548				
Width -	60 inches				
Formation -	Vol fragmentals (dacite tuff)				
Mineralization -	A little chalcopryrite. (Au)				
Sample No. 34					
Location -	From footage 555 to 560				

NORTHERN MINER PRESS LIMITED, TORONTO—STOCK FORM NO. 501 REV. 9/44

DRILLED BY

SIGNED

PROPERTY Ball Macgregor Property

HOLE NUMBER 7

SHEET NUMBER 5

DIAMOND DRILL RECORD

SECTION FROM TO

LOCATION: LAT.
 DEP.
 ELEVATION OF COLLAR
 DATUM
 DIRECTION AT START: BEARING
 DIP

STARTED
 COMPLETED
 ULTIMATE DEPTH
 PROPOSED DEPTH

DEPTH FEET	FORMATION	SAMPLE No.	WIDTH OF SAMPLE	GOLD \$	SLUDGE GOLD \$
Width - 60 inches					
Formation - Vol fragmentals (rhyolite tuff)					
Mineralization - pyrite with black streaks.	(Au)				
Sample No. 35					
Location - from footage 561 to 565					
Width - 48 inches					
Formation - Volcanic fragmentals (rhyolite tuff)					
Mineralization - Pyrite with black streaks	(Au)				
Sample No. 36					
Location - From footage 581 to 585					
Width - 48 inches					
Formation - Vol fragmentals (rhyolite tuff)					
Mineralization - pyrite with black streaks.	(Au)				
Sample No. 37					
Location from footage 585 to 590					
Width - 60 inches					
Formation - vol, fragmentals (rhyolite tuff)					
Mineralization - Pyrite, and black streaks.	(Au)				

NORTHERN MINER PRESS LIMITED, TORONTO-STOCK FORM No. 601 REV. 9/44

DRILLED BY

SIGNED

PROPERTY Bell Macgregor Property

HOLE NUMBER 1

SHEET NUMBER 6

SECTION FROM TO

DIAMOND DRILL RECORD

LOCATION: LAT.
 DEP.
 ELEVATION OF COLLAR
 DATUM
 DIRECTION AT START: BEARING
 DIP

STARTED
 COMPLETED
 ULTIMATE DEPTH
 PROPOSED DEPTH

DEPTH FEET	FORMATION	SAMPLE NO.	WIDTH OF SAMPLE	GOLD \$	SLUDGE GOLD \$
Sample No. 38					
Location - From footage 590 to 595					
Width - 60 inches					
Formation - Volcanic fragmentals (rhyolite tuff)					
Mineralization - pyrite and black streaks (Au)					
Sample No. 39					
Location - from footage 595 to 599					
Width - 48 inches					
Formation - vol fragmentals (rhyolite tuff)					
Mineralization - Pyrite and black streaks. (au)					
Sample No. 40					
Location - from footage 630 to 635					
Width - 60 inches					
Formation - Quartz calcite vein					
Mineralization - A little pyrite (Au)					

DRILLED BY SIGNED

PROPERTY Bell Macgregor Property

HOLE NUMBER 1

SHEET NUMBER 7

SECTION FROM TO

DIAMOND DRILL RECORD

LOCATION: LAT.
DEP.
ELEVATION OF COLLAR
DATUM
DIRECTION AT START: BEARING
DIP

STARTED
COMPLETED
ULTIMATE DEPTH
PROPOSED DEPTH

DEPTH FEET	FORMATION	SAMPLE NO.	WIDTH OF SAMPLE	GOLD \$	SLUDGE GOLD \$	
Sample No. 41						
Location -	from footage 674 to 679					
Width -	60 inches					
Formation -	Vol fragmentals (rhyolite tuff)					
Mineralization -	Pyrite and black streaks.					

NORTHERN MINER PRESS LIMITED, TORONTO—STOCK FORM No. 801 REV. 8/44

DRILLED BY SIGNED

PROPERTY Bell Macgregor property

HOLE NUMBER 4

SHEET NUMBER

SECTION FROM TO

DIAMOND DRILL RECORD

LOCATION: LAT. 225 ft. SE from No. 1 DDH set up (48455) Hor. dis. 200 ft.
 DEP.....
 ELEVATION OF COLLAR.....
 DATUM Angle starting 45°, water lost at start
 BEARING N 18 degrees East
 DIRECTION AT START:
 DIP.....

STARTED 6 p.m. Nov. 29, 1946
 COMPLETED Abandoned 10 a.m. November 30/46
 Delays - badly broken ground
 ULTIMATE DEPTH 31 ft.
lost core - 4 feet
 PROPOSED DEPTH.....

DEPTH FEET	FORMATION	SAMPLE NO.	WIDTH OF SAMPLE	GOLD \$	SLUDGE GOLD \$
0-6	Casing				
6-27	Fine grained gabbro, or diabase				
27-31	Lost core				
General Remarks: This hole was put down to intersect the galena fracture 200 feet East of the galena pit, and at 200 feet vertical depth.					
This hole had to be abandoned at footage 31 feet owing to the drill bit getting into a fissure.					

DRILLED BY.....

SIGNED.....

PROPERTY Bell Macgregor property

HOLE NUMBER 4A

SHEET NUMBER 1

SECTION FROM TO

DIAMOND DRILL RECORD

LOCATION: LAT. 225 ft. SE of No. 1 DDH (same as No. 4) (48455)
 DEP.

STARTED 11 a.m. Nov. 30/46

ELEVATION OF COLLAR

COMPLETED 6 p.m. Dec. 4/46

DATUM Angle starting 55°; Angle finishing 70°

Water - lost at 20'
 ULTIMATE DEPTH 373'

DIRECTION AT START: BEARING N. 18 degrass East

Delays - Bad ground

DIP Hor Dis. - 200 ft.

PROPOSED DEPTH

Lost core - None

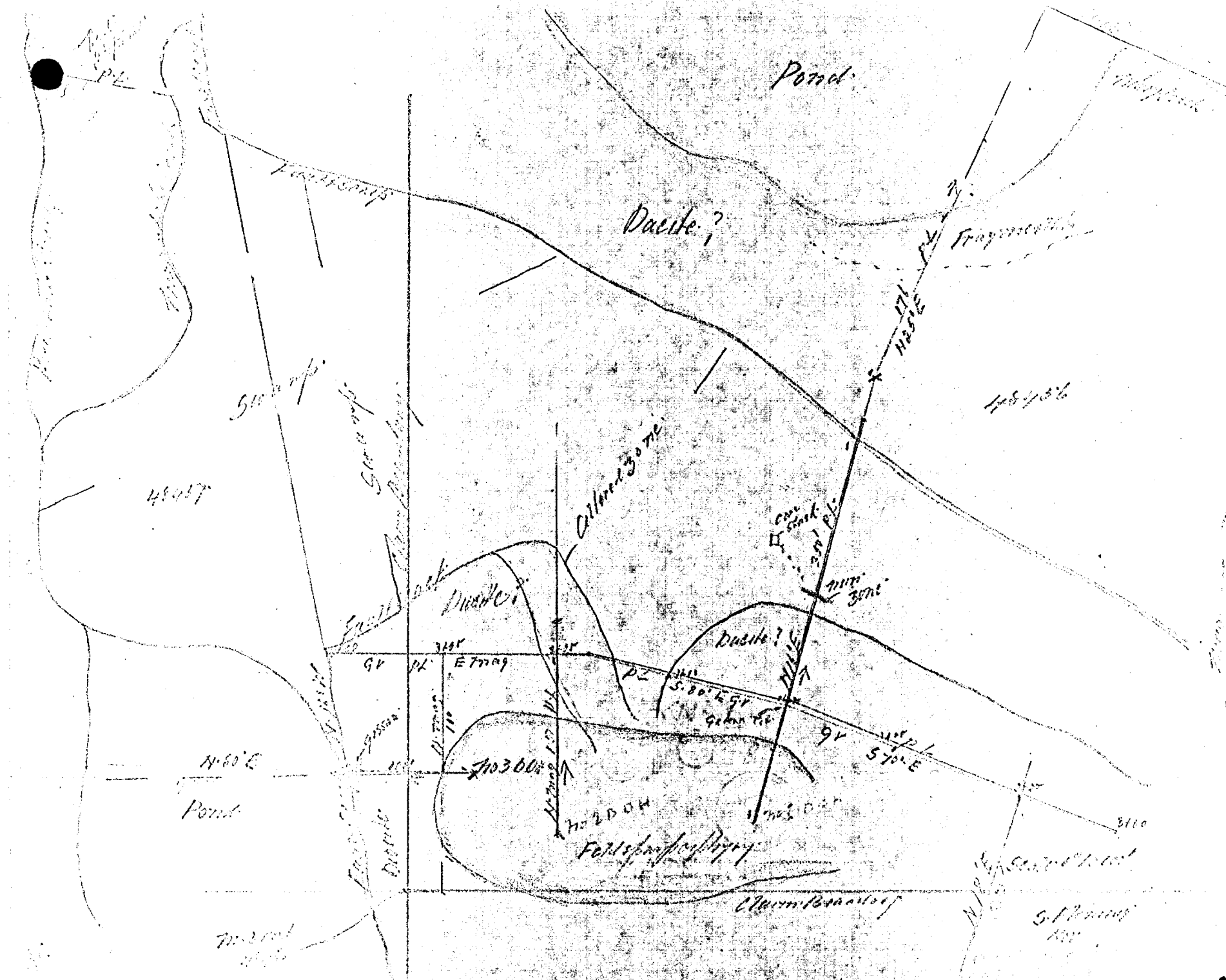
DEPTH FEET	FORMATION	SAMPLE No.	WIDTH OF SAMPLE	GOLD \$	SLUDGE GOLD \$
0-8	Casing				
8-214	Fine grained gabbro or diabase (fresh)				
214-327	Feldspar porphyry.				
327-327.3	Calcite vein (barren)				
327.3-342	Feldspar porphyry.				
342-342.4	Calcite vein (barren)				
342.4-373	Feldspar porphyry.				
General Remarks: This hole was put down in the same location as DDH No. 4, but the angle was changed to 55 degrees, to cut the fissure a little lower. The ground was very badly broken thruout the hole, and the water was lost at footage 20 feet. The angle of the hole changed about footage 170 and finished at 70 degrees. The hole was stopped at footage 373, owing to the fact that we should have crossed the galena fracture, and the hole was getting too steep, we were also out of gas. Two small barren calcite veins were intersected, in the lower portion of the hole.					

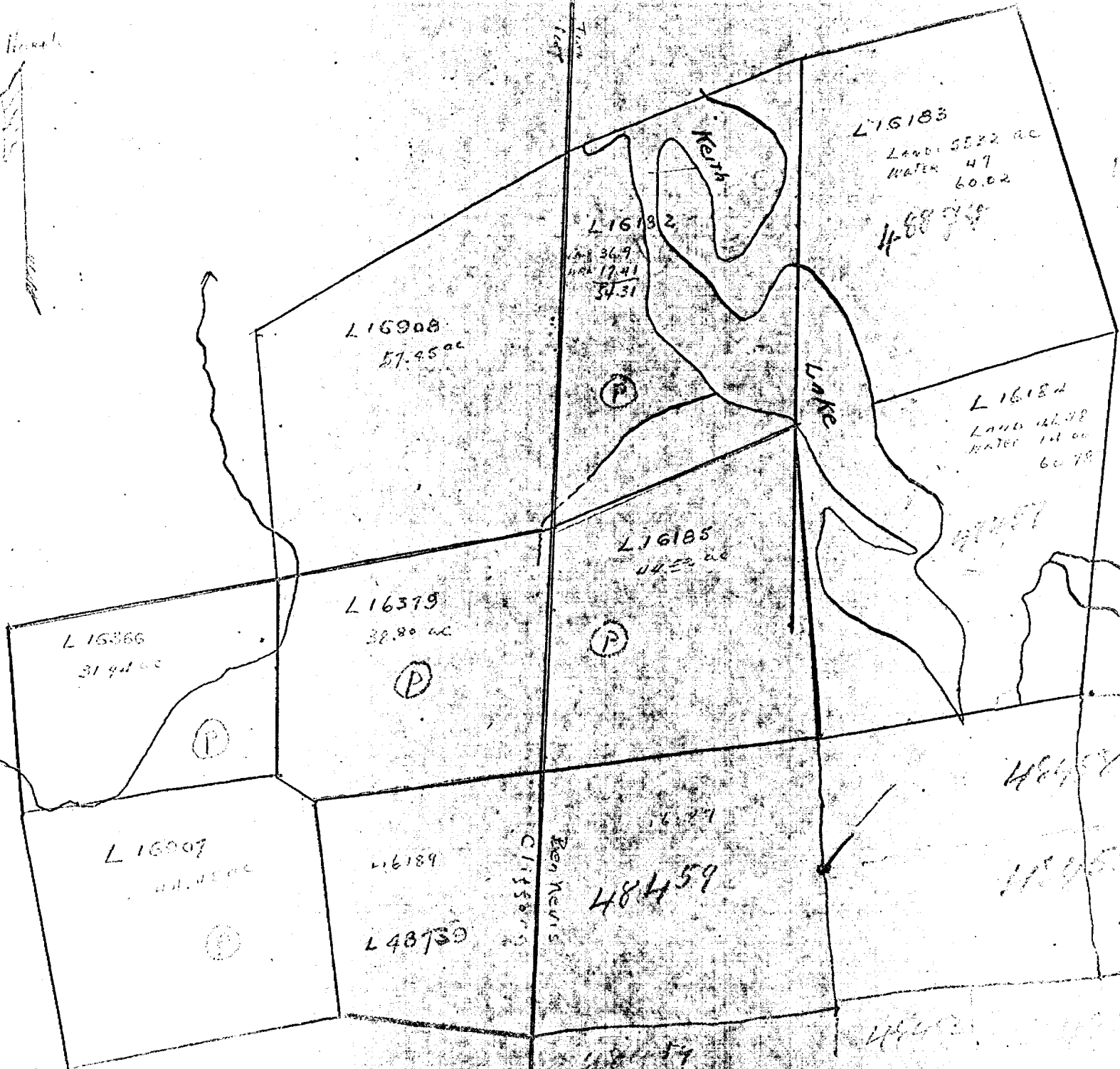
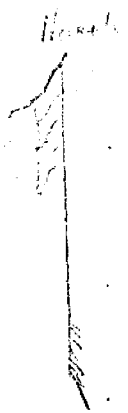
NORTHERN MINER PRESS LIMITED, TORONTO-STOCK FORM NO. 501 REV. 9/44

DRILLED BY

SIGNED

12

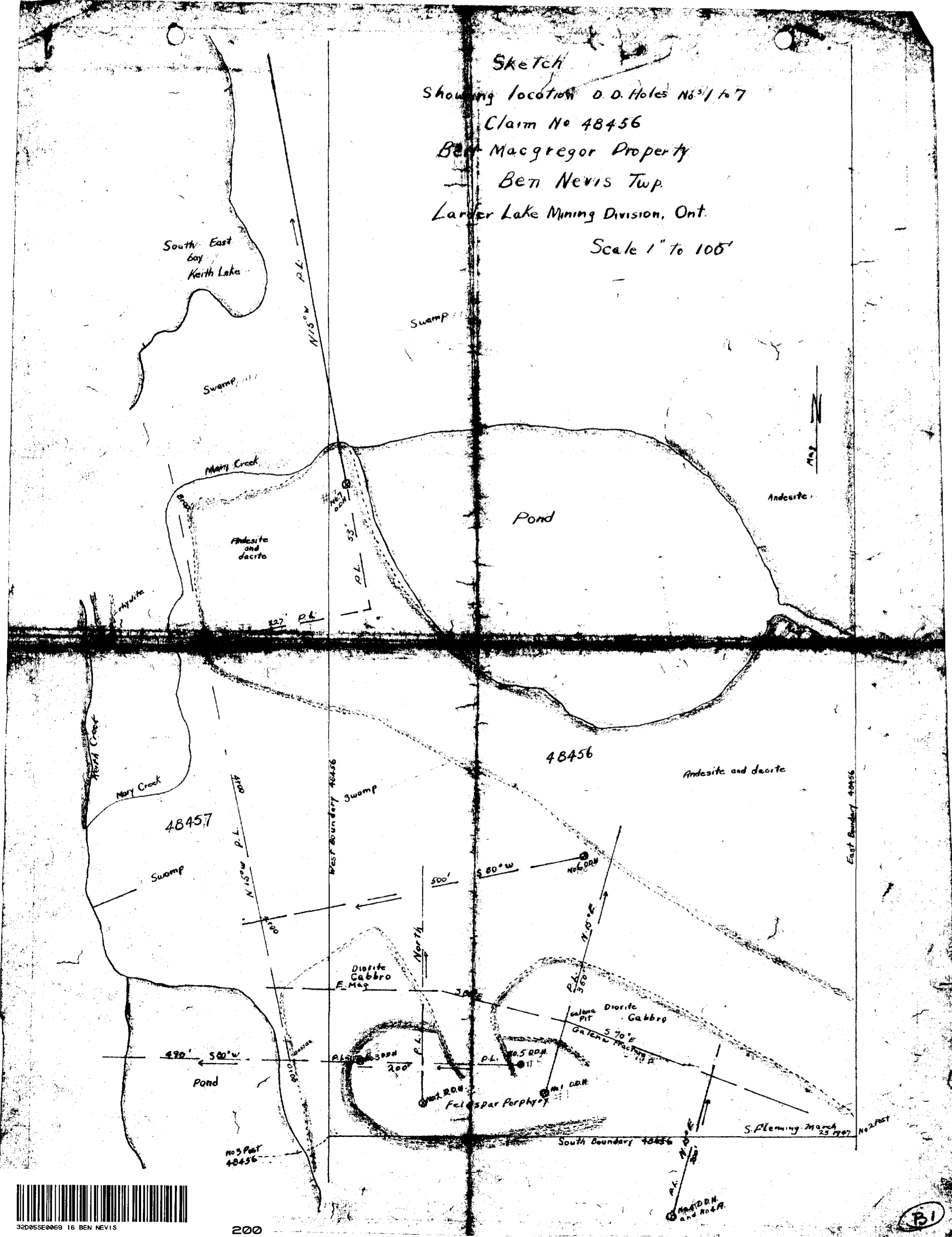


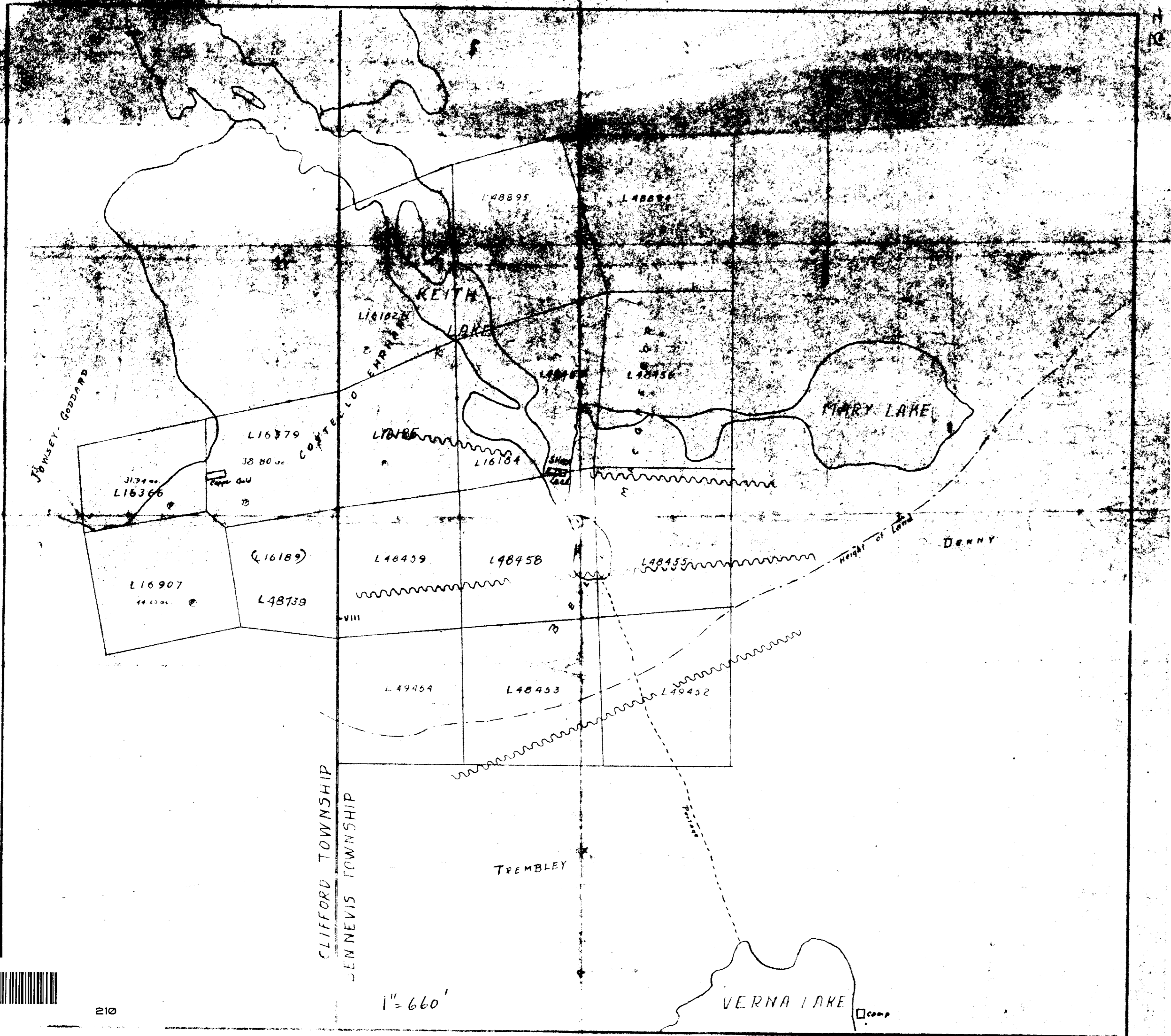


12

12

Sketch
 Showing location O.D. Holes N^o 1 to 7
 Claim No 48456
 Ben Macgregor Property
 Ben Nevis Twp.
 Larder Lake Mining Division, Ont.
 Scale 1" to 105'





32005E0089 16 BEN NEVIS