

32D05SW0128 2.9243 BISLEY

010

GRID B 30
BISLEY TOWNSHIP ONTARIO
LARDER LAKE MINING DIVISION
NTS 32 D 5

REPORT ON
MAGNETIC SURVEY

RECEIVED

JUL 11 1986

MINING LANDS SECTION

A. JAMES WALKER P.Eng.

JUNE 16, 1986



32D055W0128 2.9243 BISLEY

010C

- i -

LIST OF CONTENTS

Introduction	Page 1
Summary	
Property	
Previous Work	
Geology	
Survey Method	
Survey Results	
Conclusions	
Survey Data	

ENCLOSURES

Grid B 30	Magnetic Survey	Contours	1:5000
	Magnetic Survey	Values	1:5000

INTRODUCTION

Walker Exploration Ltd. carried out a magnetometer survey over a 6 claim group, located in the south east corner of Bisley Township, about 15 kilometers northeast of Kirkland Lake.

Linecutting and chaining was done by another contractor, Jean Alix Co. Ltd. in May 1986, and was mainly refurbishing a previous grid. The magnetic survey was made on May 31, 1986.

The survey was carried out with an EDA PPM 300 total field proton magnetometer, with an EDA PPM 400 base station magnetometer for diurnal drift control.

SUMMARY

A magnetic high at Nickila Lake likely represents a gabbro intrusive. Some drill collars were observed which would indicate the zone has been tested in part.

PROPERTY

The 6 claim group is located in the southeast corner of Bisley Township (Claims 858271, 890930-890934 inclusive). Access is via the Esker Lake road from Highway 66, and bush road about 3 kilometers to the west.

PREVIOUS WORK

Magnetic and VLF EM surveys were carried out by GEOEX for Falconbridge Limited in 1980. In 1983 Monpros Ltd. repeated the surveys because of errors observed in the data. Monpros recommended drilling as well as basal till sampling. Our crew observed some drill hole collars which may have been by Monpros.

A reverse circulation hole was drilled for the Ontario Geological survey, which obtained visible gold flakes.

GEOLOGY O.G.S. Geological Report 103, Map 2252

The area is mainly underlain with Archean mafic to felsic volcanics with mafic intrusives. The property is mapped as mainly drift covered intermediate volcanics, with a quartz gabbro located to the south west of Nickila Lake.

SURVEY METHOD

The magnetic survey was performed with an EDA PPM 300 proton magnetometer, measuring total field to 0.1 gammas. Diurnal control was made by using an EDA PPM 400 base station magnetometer, located on the Esker Lake road, just north of highway 66. Other grids on this project are tied into this common base station.

The field magnetometer and base station magnetometer have solid state memory for storage of values and locations of stations read. The instruments have built in clocks which are synchronized each day. The units are plugged together each evening and the built-in computer programme in the base station allows for automatic diurnal correction of data collected. This corrected data was stored on the cassette of an HP85 computer in the field, and later transferred to an IBM compatible computer for final plotting.

Observations were made at 12.5 meter stations on lines with 125 meter spacing. Values are plotted on a plan at a scale of 1:5000. Contours of values are plotted on a separate sheet.

SURVEY RESULTS

The main feature of the survey is the magnetic high at

Nickila Lake, which interrupts the general east-west trend to the volcanics. North-south faulting is suggested along the east side of the high and northwest-southeast faulting along the southwest side of the high.

CONCLUSIONS

The survey has located the magnetic high, probably first noticed in airborne magnetics. Results of previous drilling could probably be obtained from previous owners or resident geologist of the Ontario Geological Survey. Previous VLF-EM surveys (in assessment files) could assist in interpretation and be a guide to future exploration.

REGISTERED PROFESSIONAL ENGINEER
A. J. WALKER
Province of Ontario
Respectfully submitted
A. James Walker, P. Eng.

AJW:tm

SURVEY DATA

Grid B 30.

Bisley Township, Larder Lake Mining Division, Ontario.

Geophysical Contractor - Walker Exploration Ltd.

Covering Dates - Linecutting - May , 1986
 Magnetic - May 31, 1986
 Drafting - June 9 - 12, 1986
 Report - June 16, 1986

Line Coverage - Linecutting - 9.028 km.
 Magnetic Survey - 9.028 km.
 Readings - 734.
 Line Spacing - 125 meters
 Station Spacing - 12.5 meters

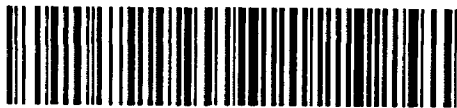
Crew

Linecutting - Jean Alix Co. Ltd., Val D'Or Quebec
Magnetic Survey - J. Tough, Bracebridge, Ontario
 D. Miles, London, Ontario
Drafting - T.J. Miles, Mississauga, Ontario
 R.T. Marcroft, Mississauga, Ontario
Field Report - A.J. Walker, Oakville, Ontario

Instruments

Magnetic Survey

- EDA PPM 300 Proton, Total field
Direct Reading, 0.1 Gamma
Solid State Memory.
- EDA PPM 400 Base Station Recorder.



TO BE ATTACHED AS AN APPENDIX TO TECHNICAL REPORT
FACTS SHOWN HERE NEED NOT BE REPEATED IN REPORT
TECHNICAL REPORT MUST CONTAIN INTERPRETATION, CONCLUSIONS ETC.

Type of Survey(s) Magnetometer
Township or Area Bisley
Claim Holder(s) Lac Minerals Ltd.

Survey Company Walker Exploration Ltd.
Author of Report A. James Walker
Address of Author 10 Hurontario St., Mississ., Ont.
Covering Dates of Survey May 1986 - June 16, 1986
(linecutting to office)
Total Miles of Line Cut 9.027 kilometers

MINING CLAIMS TRAVERSED
List numerically

L 858271 ✓
(prefix) (number)
L 890930 ✓

L 890931 ✓
L 890932 ✓
L 890933 ✓
L 890934 ✓

**SPECIAL PROVISIONS
CREDITS REQUESTED**

ENTER 40 days (includes
line cutting) for first
survey.

ENTER 20 days for each
additional survey using
same grid.

DAYS
per claim.

Geophysical
-Electromagnetic _____
-Magnetometer 40
-Radiometric _____
-Other _____
Geological _____
Geochemical _____

AIRBORNE CREDITS (Special provision credits do not apply to airborne surveys)

Magnetometer _____ Electromagnetic _____ Radiometric _____
(enter days per claim)

DATE: June 16, 1986 SIGNATURE: [Signature]
Author of Report or Agent

Res. Geol. _____ Qualifications 632234

Previous Surveys

File No.	Type	Date	Claim Holder

TOTAL CLAIMS 6

If space insufficient, attach list

OFFICE USE ONLY

GEOPHYSICAL TECHNICAL DATA

GROUND SURVEYS - If more than one survey, specify data for each type of survey

Number of Stations 373 Number of Readings 734
Station interval 12.5 meters Line spacing 125 meters
Profile scale
Contour interval 25 gammas

MAGNETIC

Instrument EDA PPM 300, Proton Total Field
Accuracy - Scale constant Readout to 0.1 Gammas
Diurnal correction method Base Station Recorder, EDA PPM 400
Base Station check-in interval (hours) Continuous - 15 seconds
Base Station location and value Off Esker Lake Road, just north of
Highway 66 - 59703 gammas

ELECTROMAGNETIC

Instrument
Coil configuration
Coil separation
Accuracy
Method: [] Fixed transmitter [] Shoot back [] In line [] Parallel line
Frequency (specify V.L.F. station)
Parameters measured

GRAVITY

Instrument
Scale constant
Corrections made
Base station value and location
Elevation accuracy

INDUCED POLARIZATION RESISTIVITY

Instrument
Method [] Time Domain [] Frequency Domain
Parameters - On time Frequency
- Off time Range
- Delay time
- Integration time
Power
Electrode array
Electrode spacing
Type of electrode

July 15, 1986

File: 2.9243

Mining Recorder
Ministry of Northern Development and Mines
4 Government Road East
Kirkland Lake, Ontario
P2N 1A2

Dear Madam:

We received reports and maps on July 11, 1986 for a Geophysical (Magnetometer) Survey submitted under Special Provisions (credit for Performance and Coverage) on Mining Claims L 858271, et al, in the Township of Bisley.

This material will be examined and assessed and a statement of assessment work credits will be issued.

We do not have a copy of the report of work which is normally filed with your office prior to the submission of this technical data. Please forward a copy as soon as possible.

Yours sincerely,

J.C. Smith, Supervisor
Mining Lands Section

Whitney Block, 6th Floor
Queen's Park
Toronto, Ontario
M7A 1W3

Telephone: (416) 965-4888

AB/mc

cc: Lac Minerals Ltd
Royal Bank Plaza
Suite 2105, North Tower
P.O. Box 156
Toronto, Ontario
M5J 2J4

Walker Exploration Ltd
10 Hurontario Street
Mississauga, Ontario
L5G 3G7

Mining Lands Section

File No 2.9243

Control Sheet

TYPE OF SURVEY

- GEOPHYSICAL
- GEOLOGICAL
- GEOCHEMICAL
- EXPENDITURE

MINING LANDS COMMENTS:

A. Hurst
Signature of Assessor

Aug 19/86
Date

Handwritten initials/signature in the bottom left corner.

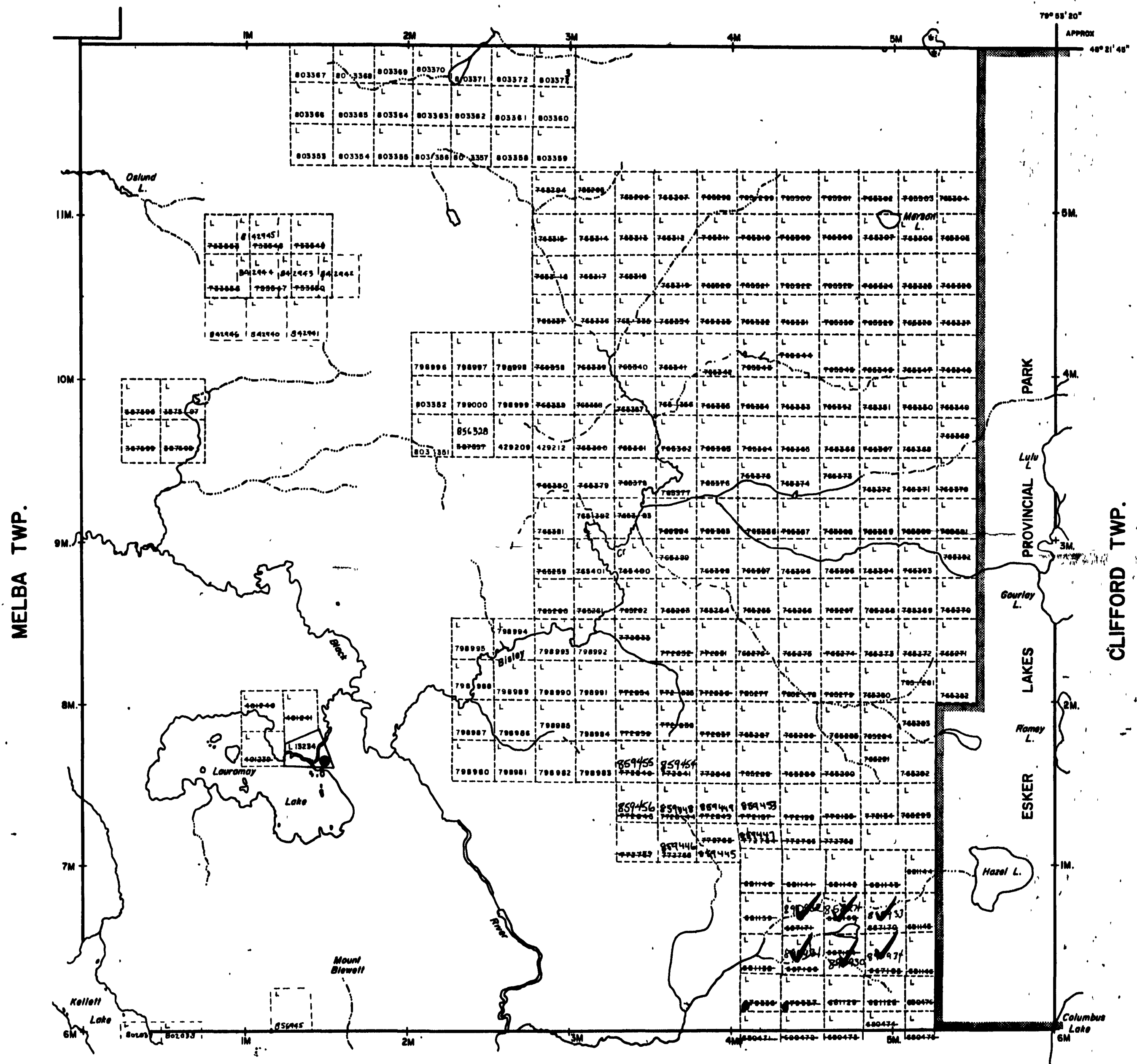
AREAS WITHDRAWN FROM DISPOSITION

- M.R.O. - MINING RIGHTS ONLY
- S.R.O. - SURFACE RIGHTS ONLY
- M. + S. - MINING AND SURFACE RIGHTS

Description Order No. Date Disposition File

BARNET TWP.

THACKERAY TWP.



LEGEND

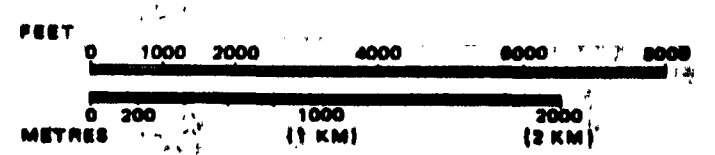
HIGHWAY AND ROUTE No.	
OTHER ROADS	
TRAILS	
SURVEYED LINES:	
TOWNSHIPS, BASE LINES, ETC.	
LOTS, MINING CLAIMS, PARCELS, ETC.	
UNSURVEYED LINES:	
LOT LINES	
PARCEL BOUNDARY	
MINING CLAIMS ETC.	
RAILWAY AND RIGHT OF WAY	
UTILITY LINES	
NON-PERENNIAL STREAM	
FLOODING OR FLOODING RIGHTS	
SUBDIVISION OR COMPOSITE PLAN	
RESERVATIONS	
ORIGINAL SHORELINE	
MARSH OR MUSKEG	
MINES	
TRAVERSE MONUMENT	

DISPOSITION OF CROWN LANDS

TYPE OF DOCUMENT	SYMBOL
PATENT, SURFACE & MINING RIGHTS	
" SURFACE RIGHTS ONLY	
" MINING RIGHTS ONLY	
LEASE, SURFACE & MINING RIGHTS	
" SURFACE RIGHTS ONLY	
" MINING RIGHTS ONLY	
LICENCE OF OCCUPATION	
ORDER-IN-COUNCIL	
RESERVATION	
CANCELLED	
SAND & GRAVEL	

NOTE: MINING RIGHTS IN PARCELS PATENTED PRIOR TO MAY 6, 1915, VESTED IN ORIGINAL PATENTEES BY THE PUBLIC LANDS ACT, R.S.O. 1970, CHAP. 286, SEC. 63, SUBSEC. 1.

SCALE: 1 INCH = 40 CHAINS



TOWNSHIP
BISLEY
 M.N.R. ADMINISTRATIVE DISTRICT
 KIRKLAND LAKE
 MINING DIVISION
 LARDER LAKE
 LAND TITLES / REGISTRY DIVISION
 COCHRANE

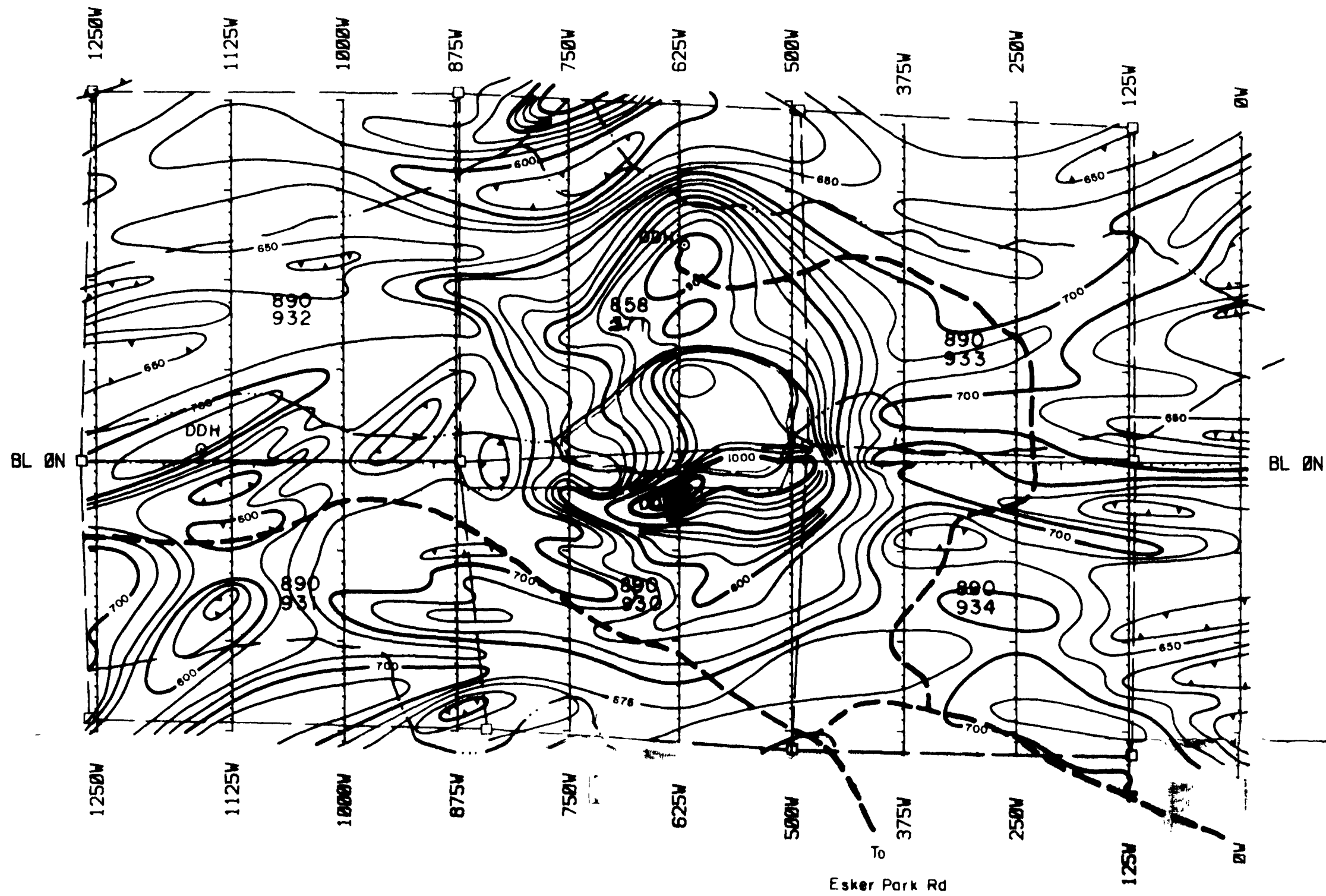
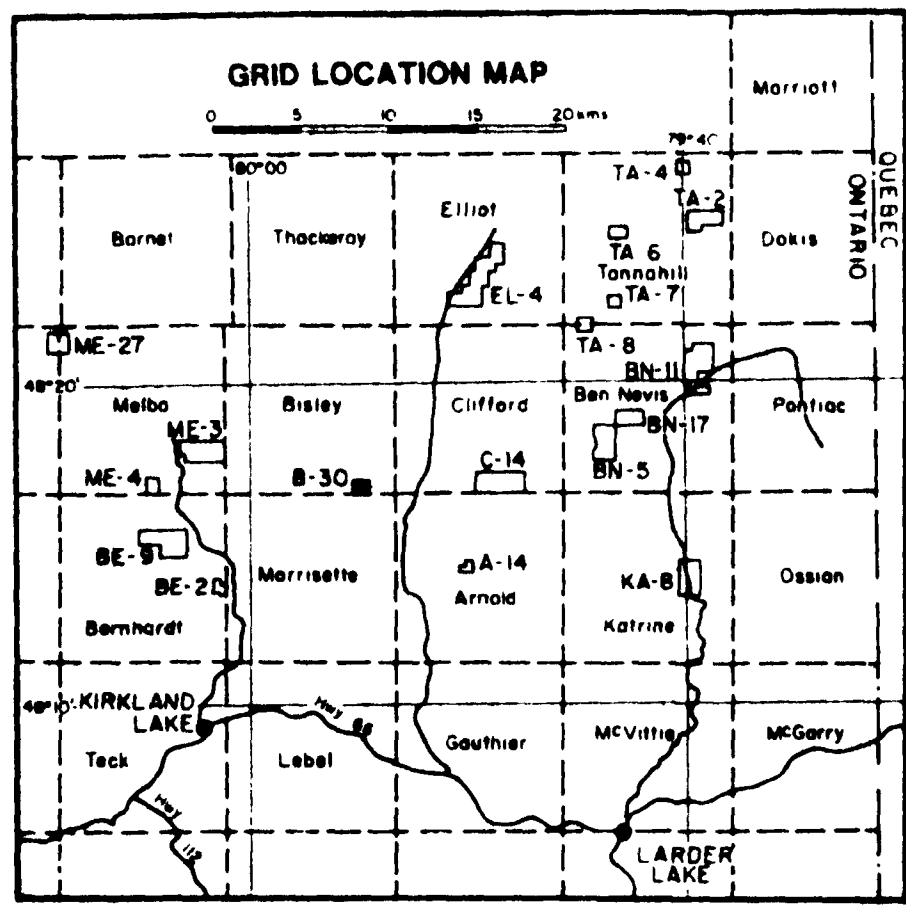
Ministry of Natural Resources
 Land Management Branch
 #14

Date: JANUARY 1985
 Member
G-3191

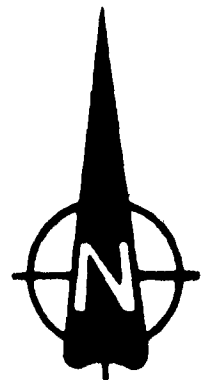


3206590128 2 9243 BISLEY

MORRISETTE TWP.



29243



SURVEY DATA
 Contractor - Walker Exploration Ltd.
 Instrumentation - EDR PPM-500
 Base Station - EDR PPM 400

TOPOGRAPHIC LEGEND

- Claim post and line
- Roads main, bush
- Cross, swamp, lakeshore

BISLEY TWP. (GRID B 30)
TOTAL FIELD MAGNETIC CONTOURS

Scale 1 : 5000

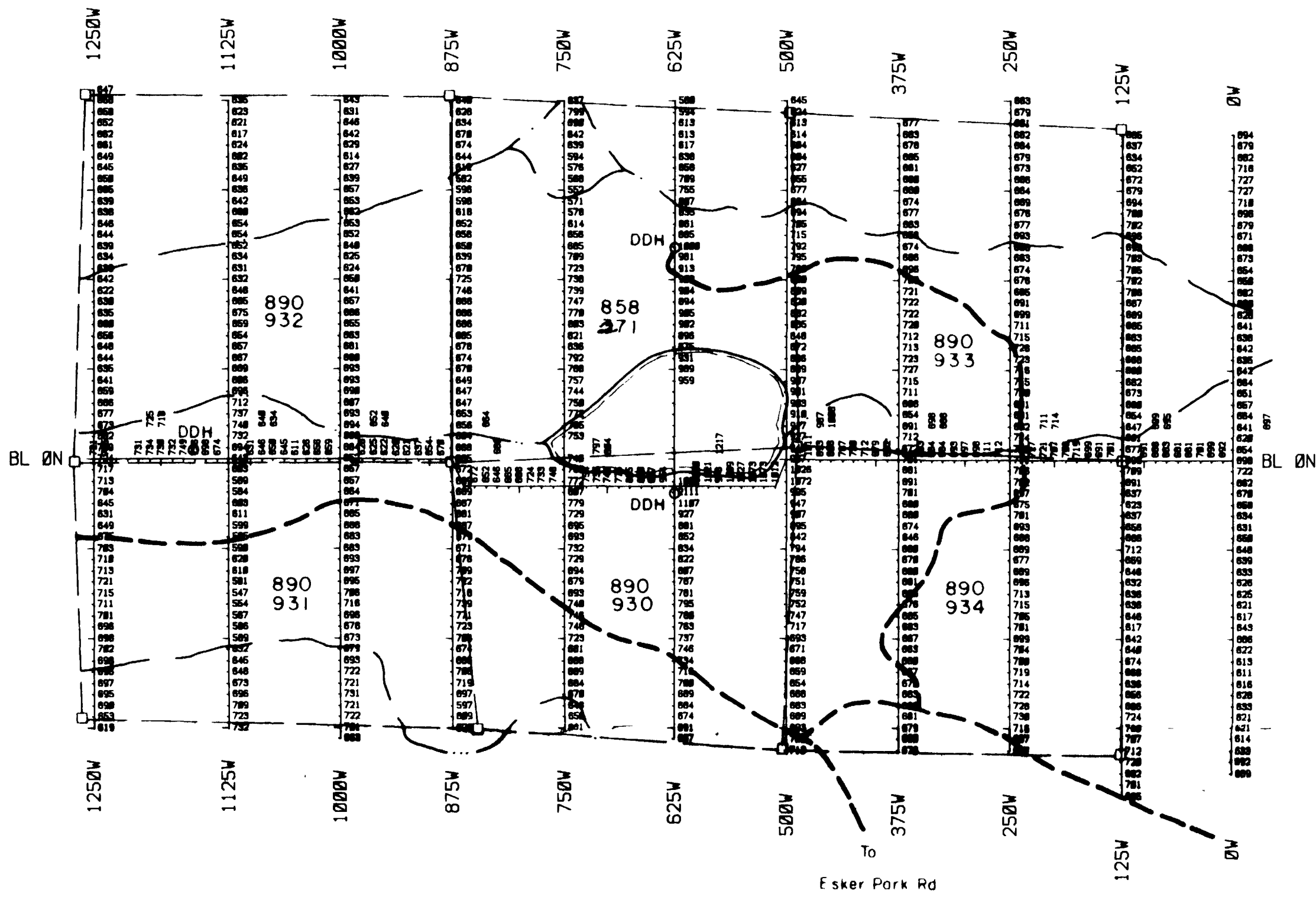
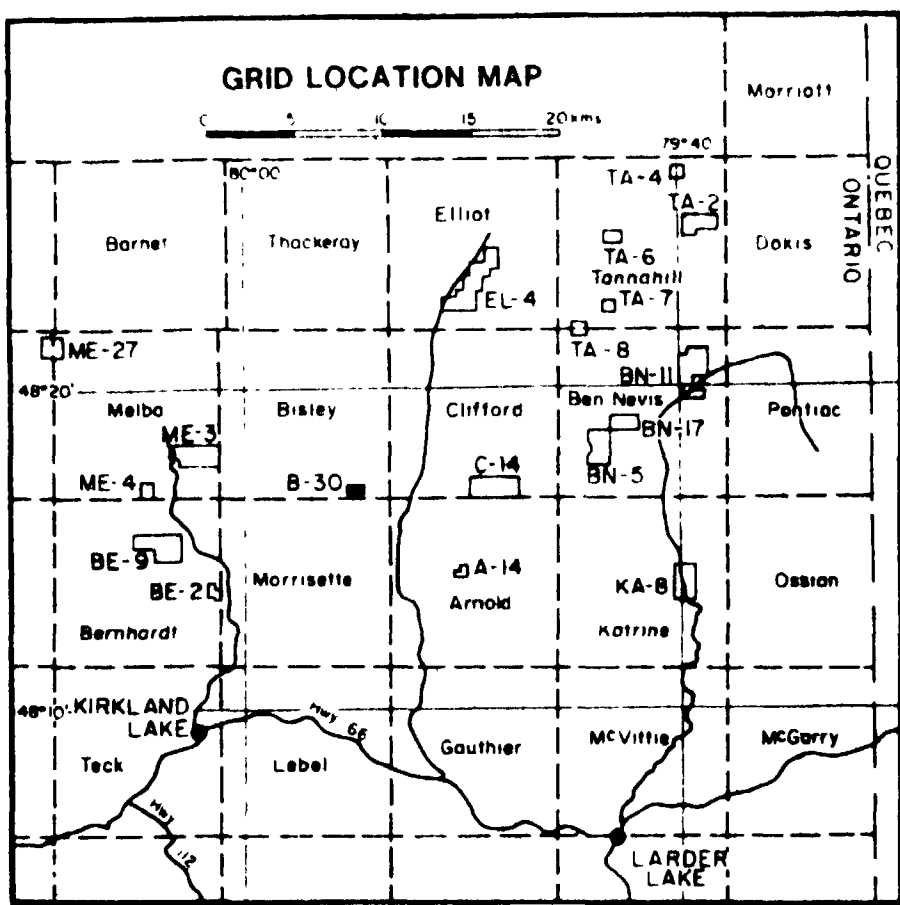
Compilation and Plotting
 by
WALKER EXPLORATION LTD
 Mississauga Ontario,
 June 1986

LEGEND
 Values above base level of 58,000 nT
 Contour interval 25 nT
 25 nT contour
 100 nT contour
 500 nT contour
 Depression

Sheet # 1b



320656128 2-8243 BISLEY



27243

SURVEY DATA
 Contractor - Walker Exploration Ltd.
 Instrumentation - EDR PPM-500
 Base Station - EDR PPM 400

TOPOGRAPHIC LEGEND
 Claim post and line
 Roads main, bush
 Creek, swamp, lakeshore

BISLEY TWP. (GRID B 30)
TOTAL FIELD MAGNETIC VALUES

Scale 1 : 5000

Compilation and Plotting
 by
WALKER EXPLORATION LTD
 Mississauga Ontario.
 June 1986

LEGEND
 Base Level = 58000 nT

Sheet # 1a

