

32D12SW0014 12 LAMPLUGH

010

Diamond Drilling

Township of LAMPLUGH

Report No 12

Work performed by: Canadian Johns-Manville Co. Ltd.

Claim No	Hole No	Footage	Date	Note
L 422620	L-76-2	381.0'	May/76	(1)
L 450018	L-76-1	340.0'	Apr/76	(1)

Notes:

(1) #254-76 Harker & Lamplugh Twps.

RAND TWP M-383

#254-76
Harker + Lampugh strips

Lampugh twp
M-358

M.T.C.
Pit
1805

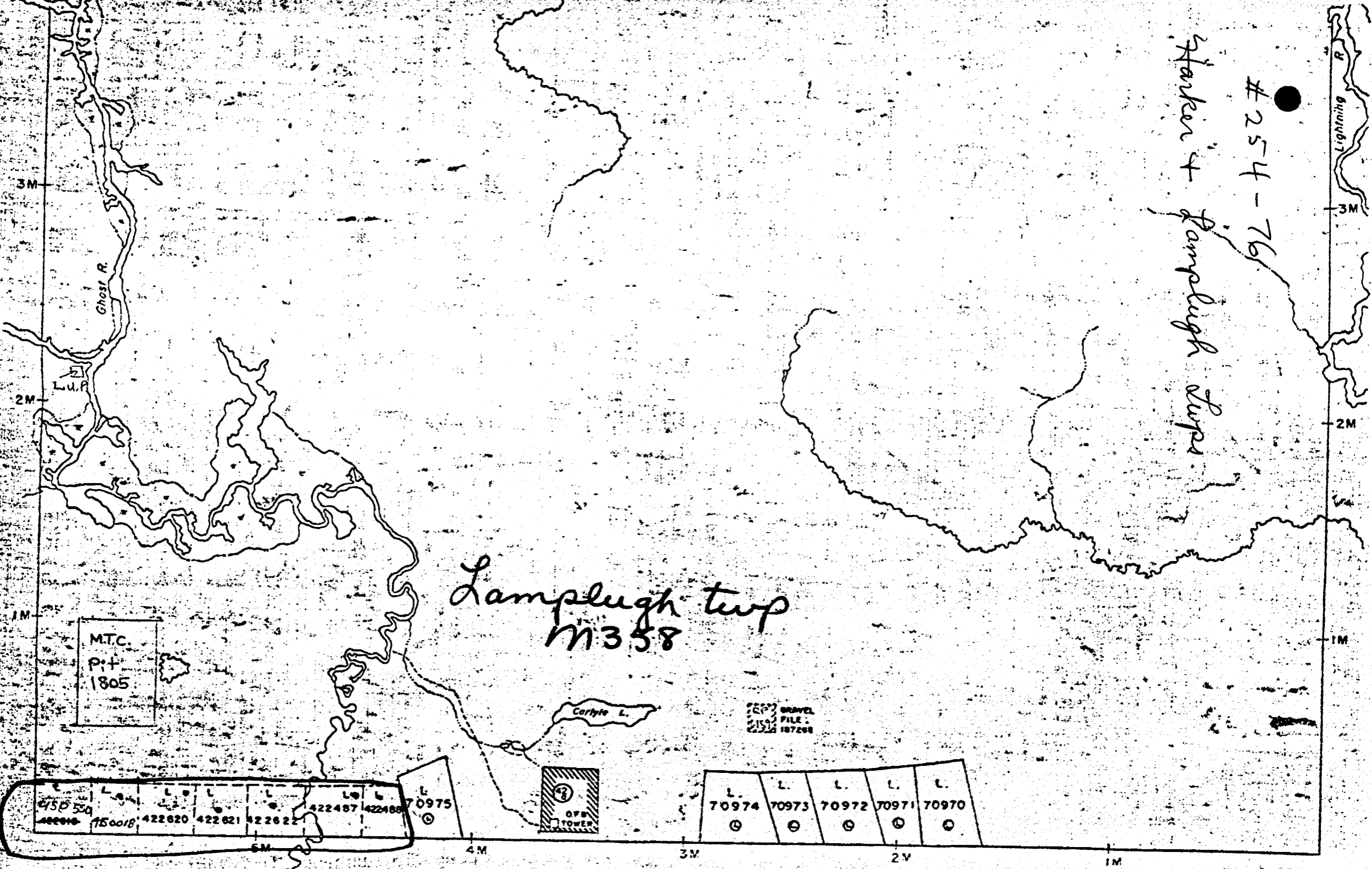
Carlyle L.

GRAVEL
FILE
187208

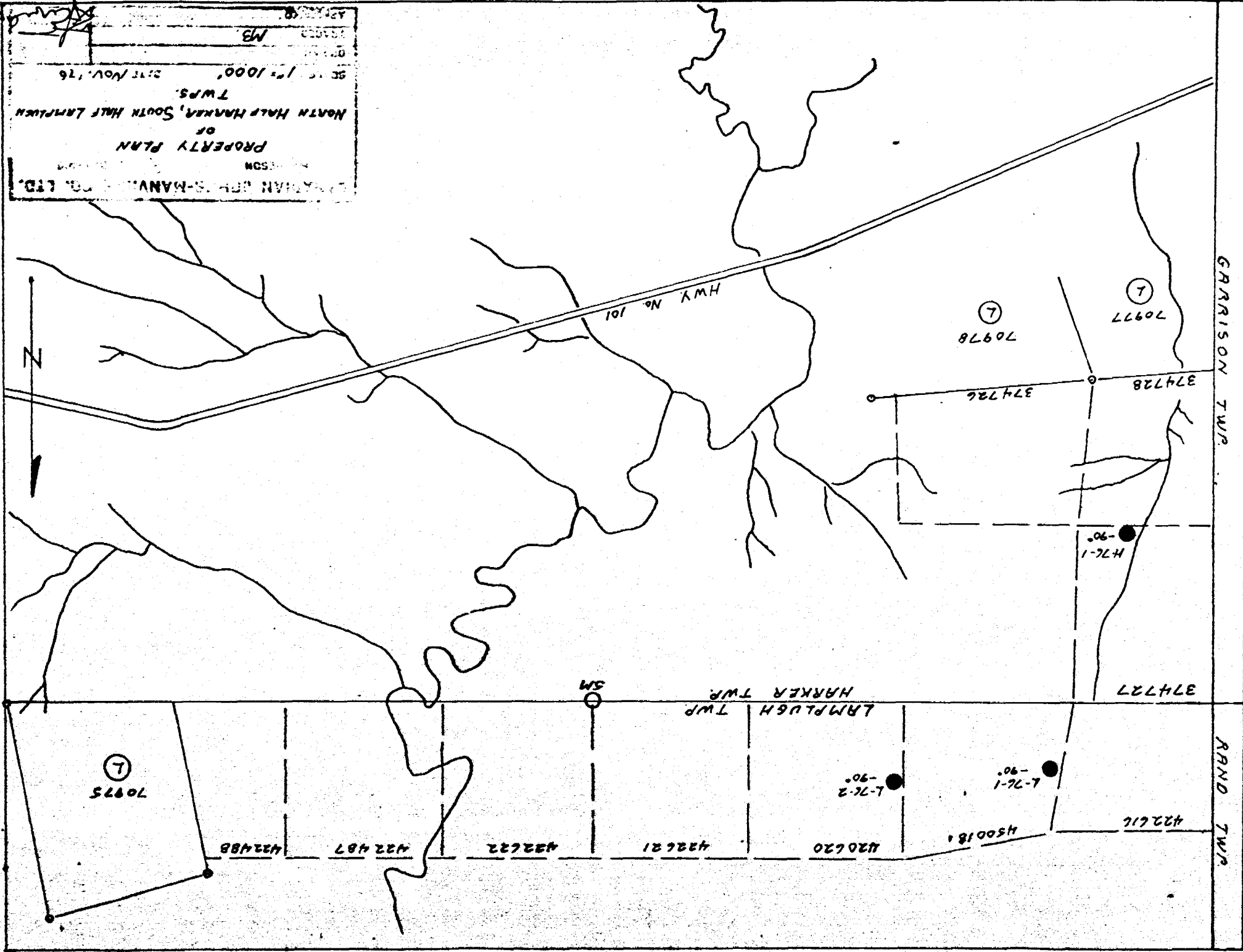
OFF
TOWER

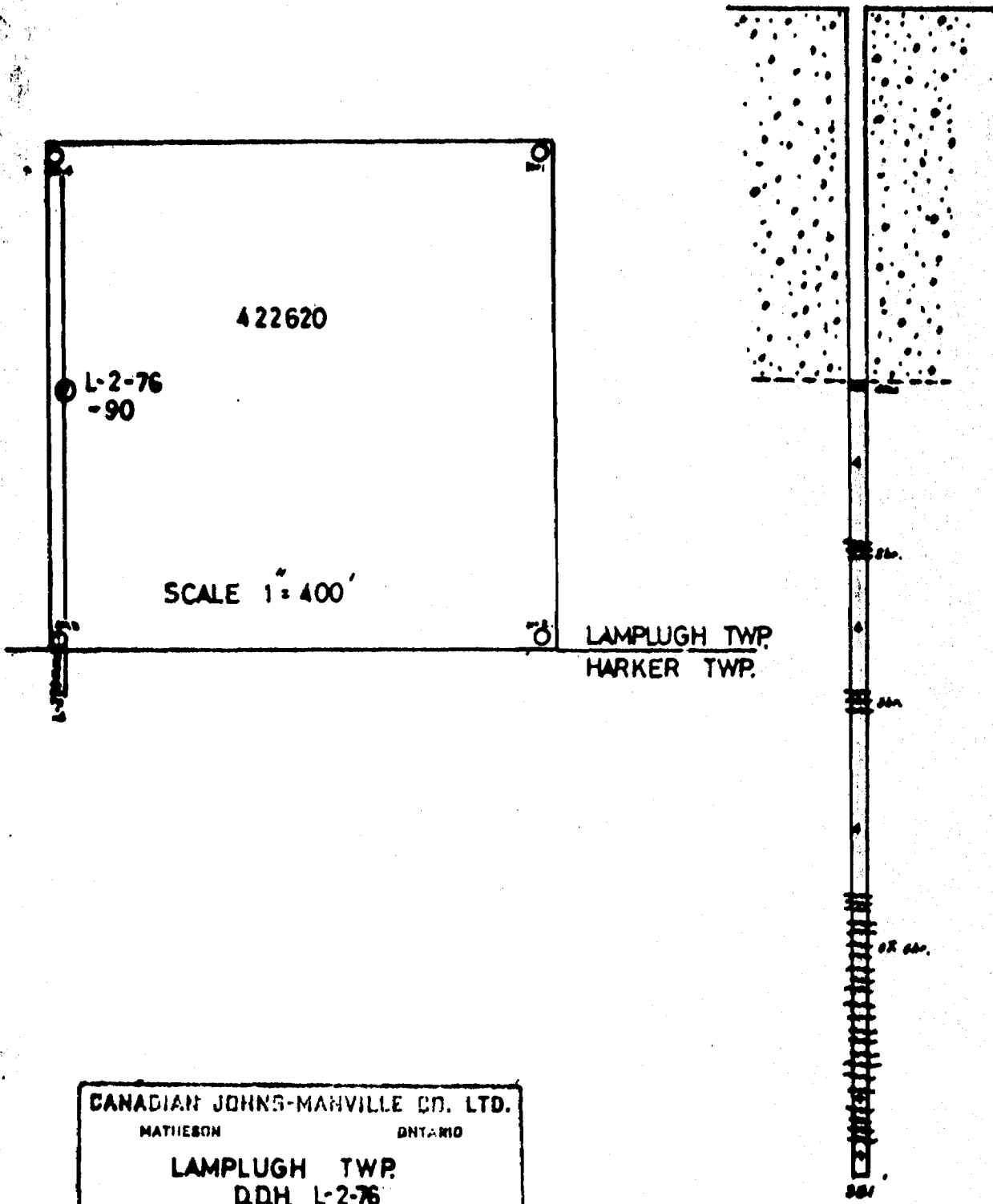
4150550	180018	422620	422621	422622	422487	422488	70975
---------	--------	--------	--------	--------	--------	--------	-------

L.	L.	L.	L.	L.
70974	70973	70972	70971	70970



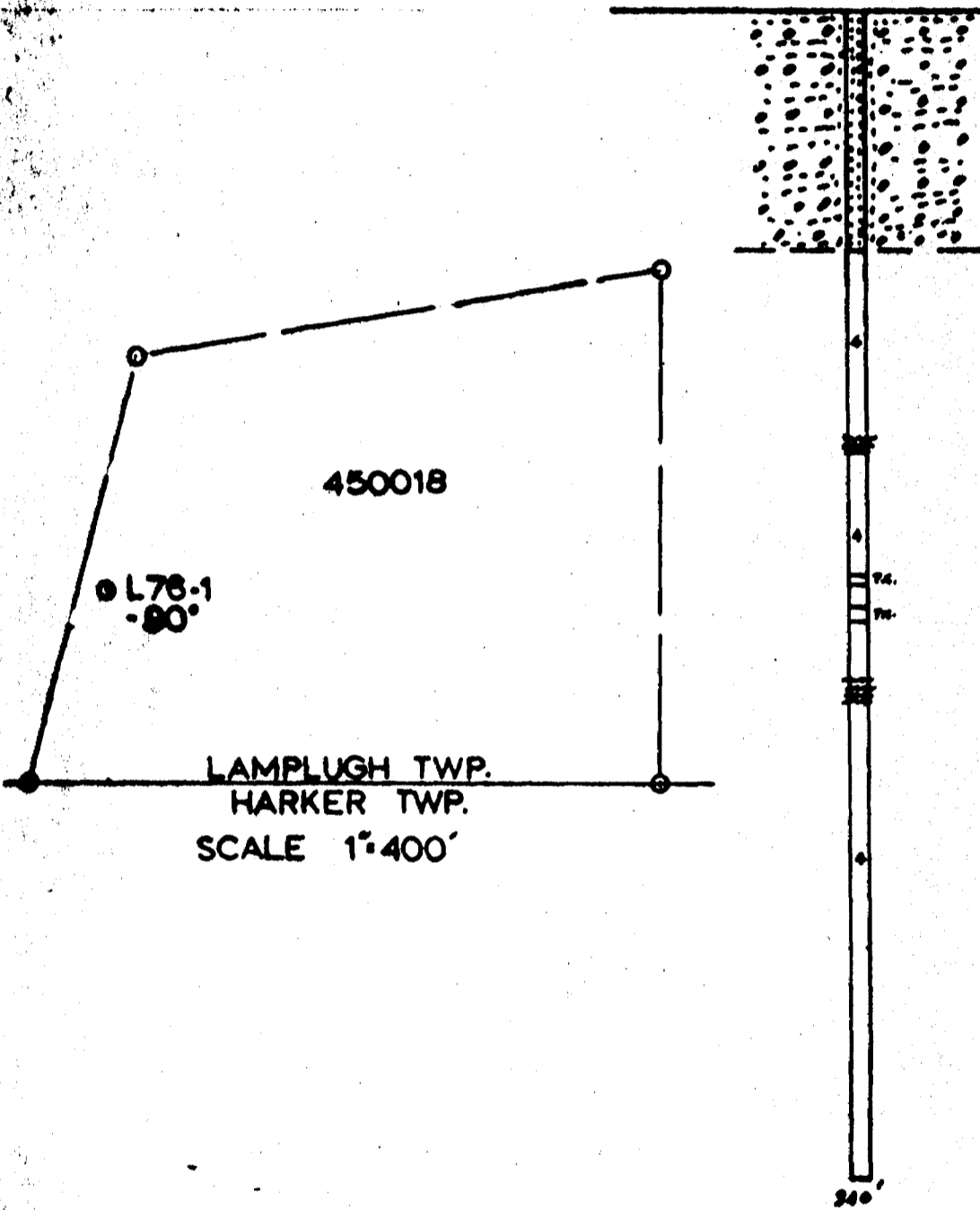
LAMMAN BROS. MANV. CO. LTD.
 OF
 PROPERTY PLAN
 NORTH HALF HARKER, SOUTH HALF LAMPLUGH
 T.W.P.S.
 SC. 1" = 1000' DATE NOV. '76
 MB





CANADIAN JOHNS-MANVILLE CO. LTD.	
MATHESON	ONTARIO
LAMPLUGH TWP.	
D.D.H. L-2-76	
SCALE 1" = 50'	June 1996
DRAWN	
TRACED	
APPROVED	

[Handwritten signature]



CANADIAN JOHNS-MANVILLE CO. LTD.	
METHOD	ENTRANCE
LAMPLUGH TWP.	
D.D.H. L-78-1	
SCALE 1:400'	DATE NOV '76
NO. 10	
DATE	
REVISIONS	

H. Campbell

(Claim 450018)

DRILL LOG

LOCATION: LINE 14E - 4+50N - 0+60E⁰
 of Base Line
 DATE STARTED: April 22, 1976
 DATE COMPLETED: May 3, 1976
 TOTAL DEPTH: 340 Feet

PROPERTY:
 HOLE NO:
 SHEET NO:

LAMPLUGH TOWNSHIP - BUNCH GROUP
 L-76-1
 1

254

ELEVATION OF COLLAR: Surface
 ELEVATION OF BOTTOM:
 BEARING:
 DIP: -90°

GEOLOGICAL DESCRIPTION	FOOTAGE	REG.	TH. V.	FIBRE VEINS												% SL. F.	% MASS. F.	% Total F.	Vein Ang	% MAG	% PYR	Rock S	REMARKS (VEIN TYPE)
				1/2	1/4	1/8	1/16	1/32	1/64	1/128	1/256	1/512	1/1024	1/2048	1/4096								
0 - 70' Overburden (chalky). "B" casing 62', "A" casing 70'.	70' - 75' 5.0 75' - 80' 4.8 80' - 85' 5.0																						
70' - 125' Dark green, medium grained serpentinite, massive, disseminated magnetite.	85' - 90' 4.5 90' - 95' 4.5 95' - 100' 5.0																						
74' - 75' hair and thread vein of fibre.	100' - 105' 5.0 105' - 110' 5.0																						
95' - 100' hair line fractures, criss-cross fibre veins.	110' - 115' 5.0 115' - 120' 5.0																			50° to core axis thread.			
100' - 105' hair line fractures, criss-cross fibre veins.	120' - 125' 5.0 125' - 130' 4.8																						
105' - 110' 1/2 talc @ 105'.	130' - 135' 4.0																						
110.6' slip fibre.	135' - 140' 4.5																						
114.5' thread vein with magnetite vein.	140' - 145' 4.8		2																	lenticular, talcy.			
145' - 150' green talc veining.	145' - 150' 5.0 150' - 155' 5.0 155' - 160' 5.0																						
125' - 128' Altered serpentinite, white carbonate and green talc veining (weak shear).	160' - 165' 5.0 165' - 170' 4.8 170' - 175' 4.7 175' - 180' 4.8																						
128' - 275' Dark to light green serpentinite, magnetite veining, hair line fractures, fibre veins, criss-cross.	180' - 185' 5.0 185' - 190' 5.0 190' - 195' 5.0																						
145' - 148' hair line fracture fibre veins criss-cross.	195' - 200' 4.5 200' - 205' 4.5 205' - 210' 5.0																						
155' - 160' talc carbonate vein @ 87° to core axis.	210' - 215' 5.0 215' - 220' 5.0																						
160' - 165' Hair line fracture fibre veins, criss-cross cores.	220' - 225' 4.8 225' - 230' 5.0 230' - 235' 5.0																						
165' - 168' talc carbonate slip fibre.	235' - 240' 5.0 240' - 245' 4.8																						
174.6' - 178' talc carbonate, weak shear.	245' - 250' 5.0 250' - 255' 5.0																						
179' - 180' slip fibre on fractures.	255' - 260' 5.0 260' - 265' 5.0 265' - 270' 5.0																						
180.6' - 184' slip fibre.	270' - 275' 5.0																						
195' - 204' weak shear 2" slip fibre @ 202', green talc, carbonate.	275' - 280' 5.0 280' - 285' 5.0																						
205' - 210' hair vein fractures, criss-cross.	285' - 290' 4.6 290' - 295' 4.0 295' - 300' 5.0																						

DRILL LOG

LOCATION:

DATE STARTED:

DATE COMPLETED:

TOTAL DEPTH:

PROPERTY: LAMPLOGH TOWNSHIP - HUNCH GROUP

HOLE NO: L-76-1

SHEET NO: 2

254

ELEVATION OF COLLAR:

ELEVATION OF BOTTOM:

BEARING:

DIP:

GEOLOGICAL DESCRIPTION	FOOTAGE	REC.	TH. V.	FIBRE VEINS												% SL. F.	% MASS. F.	% TOTAL F.	Vein Ang	% MAG	% PYR	Rock S	REMARKS (VEIN TYPE)
				1/2	1/4	3/8	1/2	3/4	1	1 1/4	1 1/2	1 3/4	2	2 1/4	2 1/2								
215' - 220' hair vein fractures, criss-cross, picrolite @ 220'.	300' - 305'	5.0																					
	305' - 310'	5.0																					
	310' - 315'	4.8																					
230' - 235' magnetite, picrolite veining.	315' - 320'	4.8																					
	320' - 325'	5.0																					
240' - 245' magnetite, picrolite veining.	325' - 330'	4.5																					
	330' - 335'	5.0																					
	335' - 340'	4.5																					
275' - 278' Talc, carbonate, serpentinite.																							
278' - 284' Dark green granular serpentinite, hair veins of fibre, criss-cross cores. Core shattered from pressure.																							
284' - 328' Dark green to black fine grained serpentinite, massive.																							
308' picrolite vein.																							
326' - 327' picrolite, talcy serpentinite.																							
328' - 340' Dark green to black serpentinite, rock massive, with criss-cross hair veins of fibre.																							
340' End of Hole.																							
LOGGED BY: R.F. Kaltwasser																							
DRILLED BY: L. Desjardins & D. Desjardins.																							
<i>[Signature]</i>																							