



32D12SW0095 25 HARKER

DIAMOND D.

010

TOWNSHIP: Harker

REPORT No.: 25

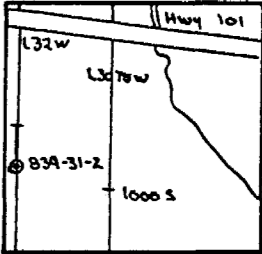
WORK PERFORMED BY: Amax Minerals Ltd.

<u>CLAIM No.</u>	<u>HOLE No.</u>	<u>FOOTAGE</u>	<u>DATE</u>	<u>NOTE</u>
L 528970	839-31-2	99.5 m	Nov/81	(1)

NOTES: (1) #65-82

AMAX MINERALS EXPLORATION
(A Division of Amax of Canada Limited)
DIAMOND DRILL RECORD

Hole No. 839-31-2

Hole No. 839-31-2	Sheet 1	Length 99.5 metres	Commenced November 4, 1981	Dip: Collar 45°	Location Sketch 	
Property Harker 3		Bearing Grid North	Completed November 6, 1981	Etch Test 1		North ↑ Claim No. 528970 Scale: 1:10,000
Township Harker		Dip -45°	Drilling Co. St. Lambert	Depth 99.5m		
Location L3200W, 1000S		Objective To test a magnetic anomaly near the sediment - volcanic contact.	Core Size BQ	Rdg. 52°		
Logged By G. Kent			Casing Left/ Lost in Hole none	True 45°		
Core Location Perry Lake		Remarks				

Footage/ Metres		DESCRIPTION
From	To	
0	34.0	OVERBURDEN
34.0	69.39	BASALT
69.39	70.20	CHERTY INTERFLOW SEDIMENT
70.20	70.81	BASALT
70.81	73.82	CHERTY INTERFLOW SEDIMENT
73.82	76.34	BASALT
76.34	77.56	CHERTY INTERFLOW SEDIMENT
77.56	91.95	BASALT
91.95	95.78	CARBONATE - BASALT BRECCIA
95.78	99.50	BASALT
	99.50	END OF HOLE

Eugene Kent

AMAX MINERALS EXPLORATION
(A Division of Amax of Canada Limited)
DIAMOND DRILL RECORD

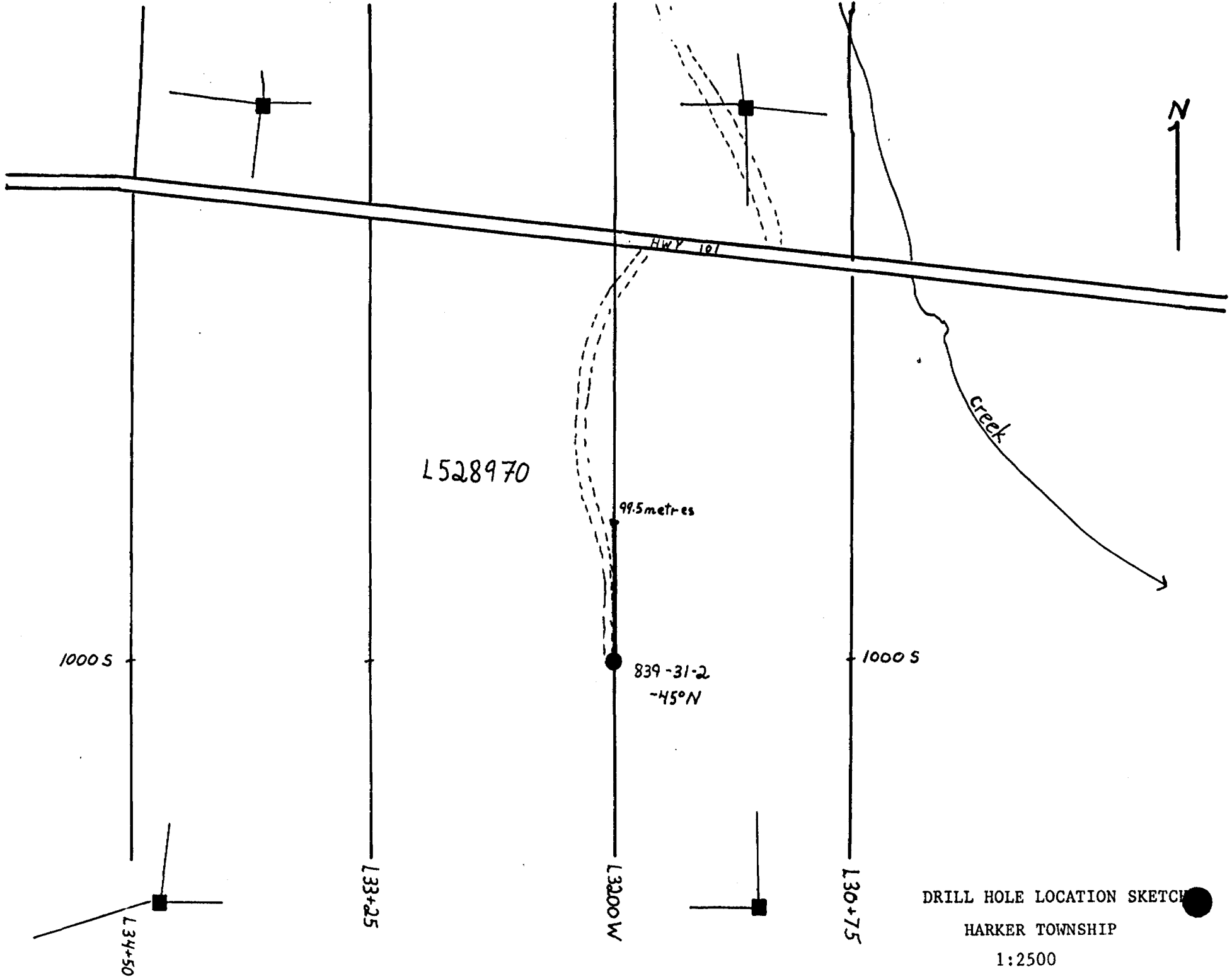
Hole No. 839-31-2
Sheet No. 2

Footage - Metres		DESCRIPTION
From	To	
0	34.0	OVERBURDEN clay, gravel
34.0	69.39	BASALT -greenstone Green to grey in colour with a hardness of 5-6. The rock is weakly magnetic and is cut by carbonate veins. The rock is altered to chlorite in part. Faulted 34.0 - 56.0 metres. The rock is broken and weathered in this section. 56.0 - 69.39 Highly brecciated and containing carbonate - pyrite veins. En-echelon gash veins cut the rock indicating hydrothermal fracturing of the rocks. Variolitic (vesicular) flow tops are seen facing the top of the hole. Younging is to the south in this area. The basalt becomes moderately magnetic towards the base.
69.39	70.20	CHERTY INTERFLOW SEDIMENT A pinkish coloured siliceous sediment. The contacts are sharp; and at -32° to the core axis. The rock is extremely hard and very fine grained. Carbonate is disseminated throughout and a strong reaction to acid occurs. Pyrite content is 15-20% and is disseminated. It is likely that this material is primary pyrite precipitated along with the chert.
70.20	70.81	BASALT as described previously 56.0 - 69.39 metres.
70.81	73.82	CHERTY INTERFLOW SEDIMENTS As described above, 70.81 - 71.08 - 10% pyrite, 71.69 - 72.05 - 10% pyrite. Lower contact is at 40° to the core axis.

AMAX MINERALS EXPLORATION
(A Division of Amax of Canada Limited)
DIAMOND DRILL RECORD

Hole No. 839-31-2
Sheet No. 3

Footage - Metres		DESCRIPTION
From	To	
73.82	76.34	BASALT as described 56.0 - 69.39 metres, strongly magnetic.
76.34	77.56	CHERTY INTERFLOW SEDIMENT Upper contact is veined by carbonate and at 30° to the core axis. 76.34 - 76.75 pyrite content is 30% Pyrite averages 3-4% across the section. Contacts at 30° to the core axis.
77.56	91.95	BASALT As described previously, with greenish-black colour and strongly magnetic. 77.56 - 79.75 Vesicular flow top and flow top breccia. Carbonate fracture fillings contain up to 20% pyrite. Carbonate - Pyrite veins occur at: 80.0 - 80.40 - 1cm wide 81.2 - 81.51
91.95	95.78	CARBONATE - BASALT BRECCIA A light green coloured rock with abundant carbonate. Green and white carbonate occur in the matrix along with disseminated pyrite, 2-4%. Black coloured fragments of basalt are set in the carbonate matrix. These fragments are highly magnetic.
95.78	99.5	BASALT Vesicular basalt with carbonate fillings in the vesicles and fractures. Carbonate pyrite veins occur at 97.12 - 97.26 and 98.62 - 98.85. Vesicular flow tops and flow top breccia indicated younging up the hole.
	99.5	END OF HOLE



L528970

HWY 101

creek



99.5 metres

839-31-2
-45°N

1000 S

1000 S

L34+50

L33+25

L3200 W

L30+75

DRILL HOLE LOCATION SKETCH
HARKER TOWNSHIP

1:2500