



32D12SW0104 21 HARKER

010

Diamond Drilling

Township of HARKER

Report N^o 21

Work performed by: Canadian Johns-Manville Co. Limited

Claim N ^o	Hole N ^o	Footage	Date	Note
L 374727	H-76-1	353.0'	May/76	(1)

Notes:

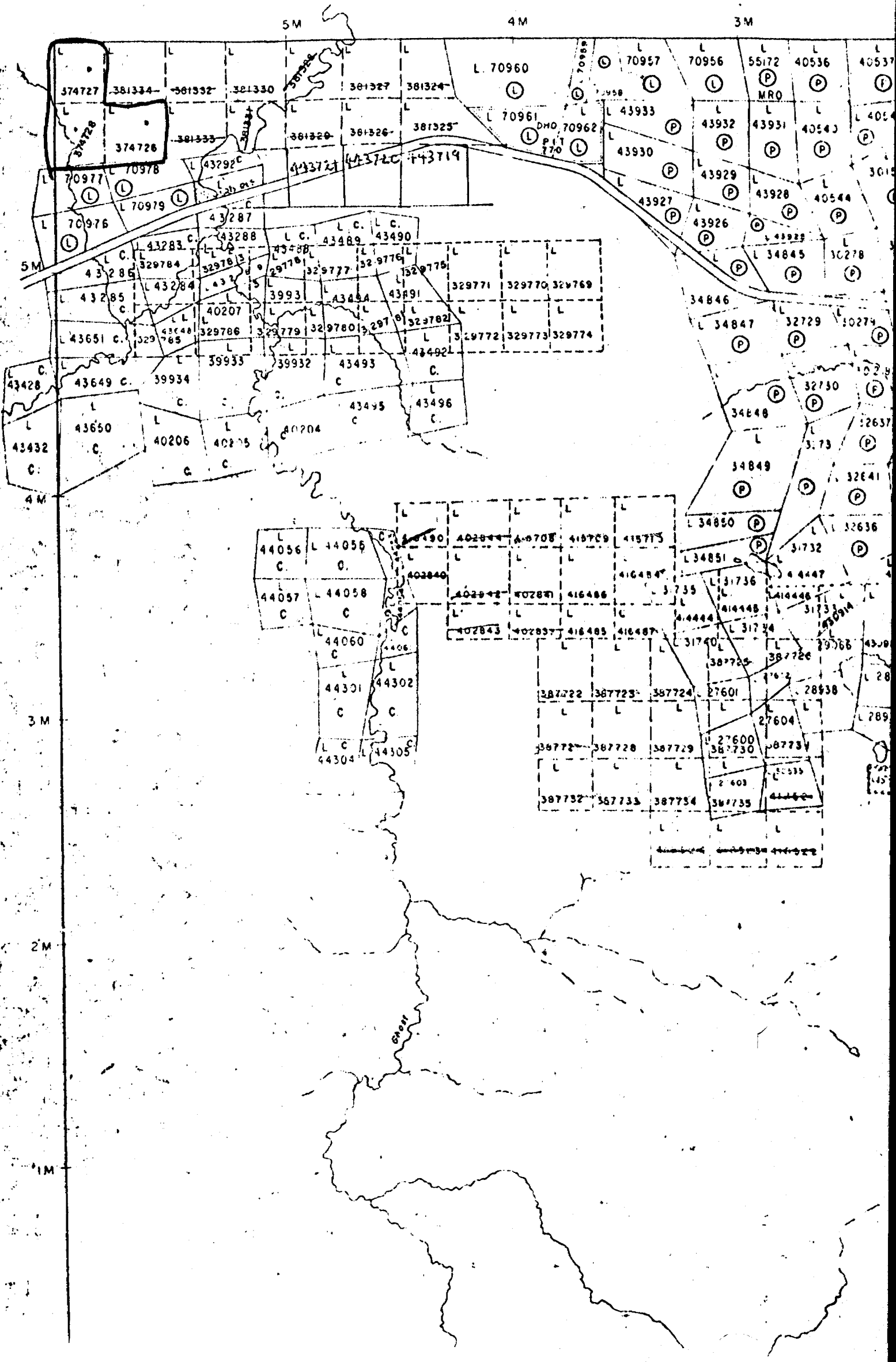
(1) #254-76 Harker & Lamplugh Twps.

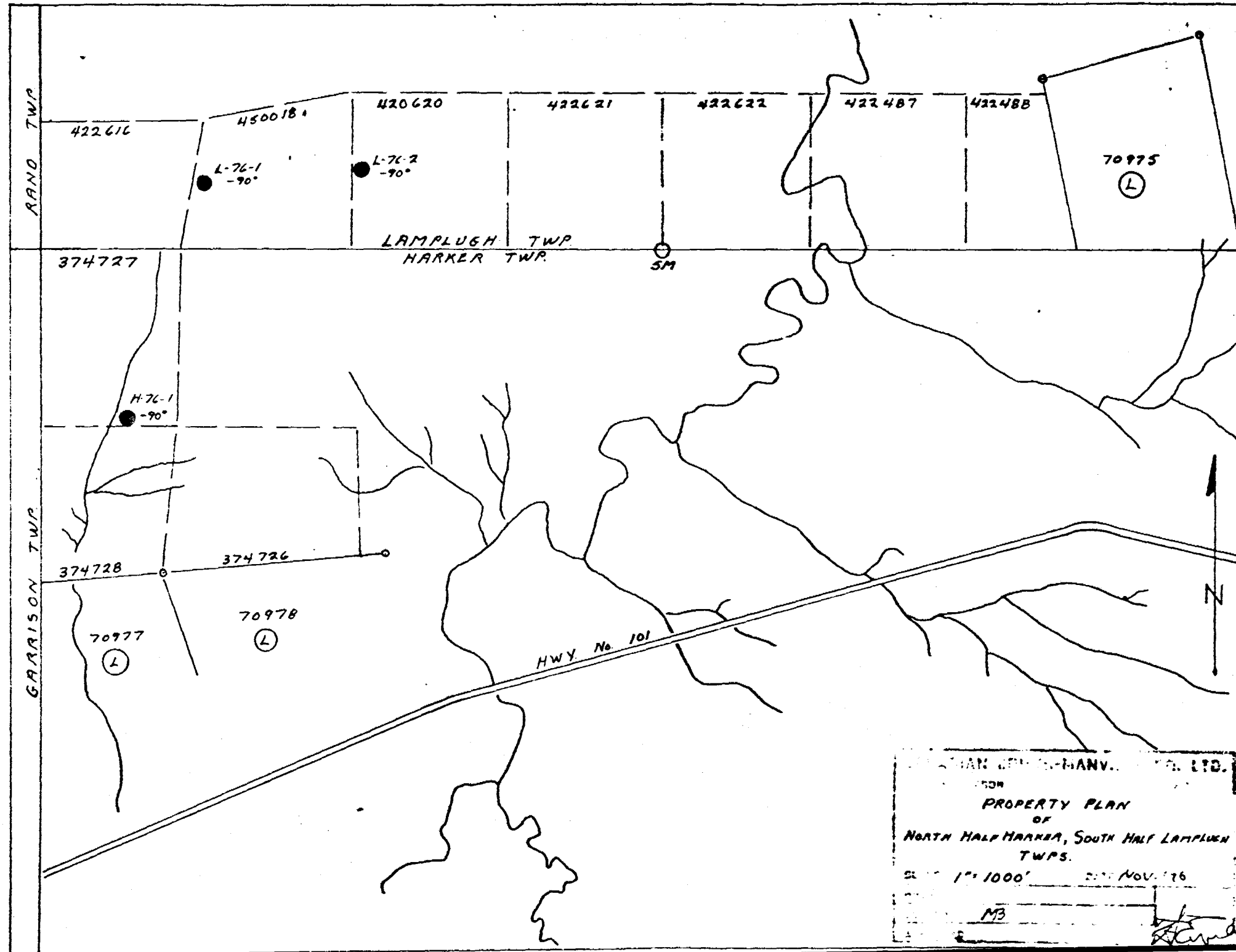
#254-76

Harber trap

LAMPLUGH TWP M-35

GARRISON TWP. M-349





LAMPLUGH TWP.

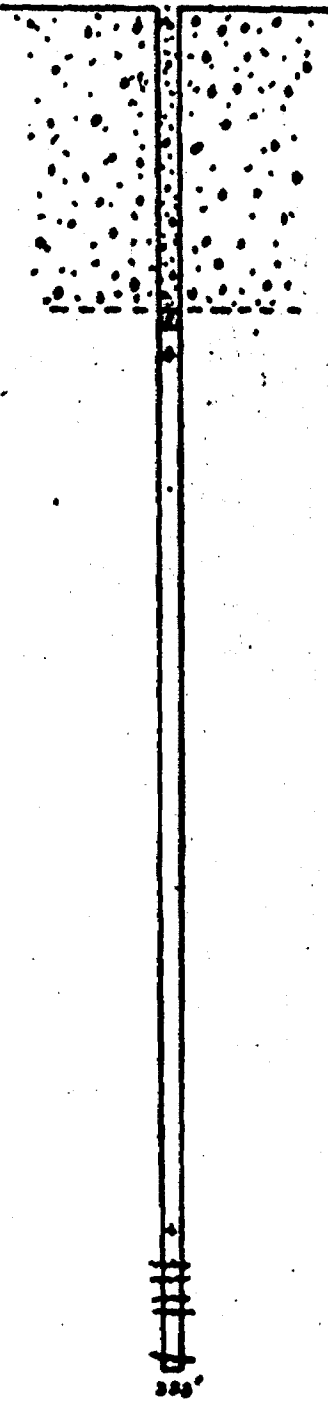
HARKER TWP

374727

H-76-1
-90°

SCALE 1" = 400'

GARRISON TWP



CANADIAN JOHNS-MANVILLE CO.-LTD.	
WATERLOO	ONTARIO
HARKER TWP	
D.Q.H. H-76-1	
SCALE 1" = 400'	DATE NOV 76
DRAWN P.R.S.	D.S. 10-76-1
TRACED	HARKER TWP
APPROVED	

[Handwritten signature]

DRILL LOG

LOCATION: LINK 6E - 14+50S - 0+60E
 DATE STARTED: May 5, 1976
 DATE COMPLETED: May 17, 1976
 TOTAL DEPTH: 353 FEET

PROPERTY: HARKER TOWNSHIP
 HOLE NO: H-76-1
 SHEET NO: 1

254

ELEVATION OF COLLAR: Surface
 ELEVATION OF BOTTOM:
 BEARING:
 DIP: -90°

GEOLOGICAL DESCRIPTION	FOOTAGE	REC.	TH. V.	FIBRE VEINS														% S. F.	% MAG. F.	% Total F.	Vein Ang.	% MAG.	% PYR.	Rock S.	REMARKS (VEIN TYPE)
				1/2	3/8	1/4	1/8	1/16	1/32	1/64	1/128	1/256	1/512	1/1024	1/2048	1/4096	1/8192								
0 - 79' Overburden.	79' - 80'	1																							
79.5' - 79.5'	80' - 85'	4.5																							
Dark green medium grained peridotite.	85' - 90'	4.8																							
	90' - 95'	4.8																							
	95' - 100'	4.7																							
79.5' - 82'	100' - 105'	4.2																							
Light grey-green slightly schistose volcanic, lower contact parallel to core axis and sharp.	105' - 110'	4.8																							
	110' - 115'	4.9																							
	115' - 120'	5.0																							
	120' - 125'	5.0																							
82' - 353'	125' - 130'	4.9																							
Dark green to black medium to fine grained brittle peridotite, blocky, magnetite on fractures, scattered coarse pyroxenes throughout core.	130' - 135'	5.0																							
	135' - 140'	5.0																							
	140' - 145'	4.9																							
	145' - 150'	4.8																							
	150' - 155'	4.9																							
107' - 118' magnetite veining.	155' - 160'	5.0																							
144' - 145' small picrolite veins up to 3/4" minor py.	160' - 165'	5.0																							
	165' - 170'	4.9																							
149' - 150' pseudo-slip fibres on slickensides.	170' - 175'	5.0																							
	175' - 180'	4.9																							
150' - 152.2'	180' - 185'	4.9																							
green talc carbonate veins perpendicular to core axis. Py at 150.7, 151.1, 151.4.	185' - 190'	5.0																							
	190' - 195'	5.0																							
	195' - 200'	4.7																							
	200' - 205'	4.9																							
204' - 204.8'	205' - 210'	4.8																							
blocky.	210' - 215'	4.7																							
225' - 227'	215' - 220'	5.0																							
blocky.	220' - 225'	5.0																							
230' - 258'	225' - 230'	4.6																							
color slightly more grey.	230' - 235'	5.0																							
	235' - 240'	4.8																							
229' - 231' blocky.	240' - 245'	4.7																							
240' - 247' blocky, green talc carbonate veining on slickenside surfaces.	245' - 250'	4.8																							
	250' - 255'	4.9																							
251.5' - 252.5'	255' - 260'	5.0																							
green and white talc-carbonate zone.	260' - 265'	4.9																							
	265' - 270'	5.0																							
252.2' - 254'	270' - 275'	4.8																							
green talc-carbonate veins up to 3/8" perpendicular to core axis.	275' - 280'	5.0																							
	280' - 285'	5.0																							
259.4' - 3/8" carbonate vein	285' - 290'	5.0																							
282' - 282.9'	290' - 295'	5.0																							
green and white talc-carbonate veins.	295' - 300'	4.7																							
	300' - 303'	4.9																							

DRILL LOG

LOCATION:
 DATE STARTED:
 DATE COMPLETED:
 TOTAL DEPTH:

PROPERTY: BARKER TOWNSHIP
 HOLE NO: R-76-1
 SHEET NO: 2

#254

ELEVATION OF COLLAR:
 ELEVATION OF BOTTOM:
 BEARING:
 DIP:

GEOLOGICAL DESCRIPTION	FOOTAGE	REC.	TH. V.	FIBRE VEINS												% SL. F.	% MASS. F.	% TOTAL F.	Vein Ang	% MAG	% PYR	Rock S	REMARKS (VEIN TYPE)
				1/4"	3/16"	1/8"	1/16"	1/32"	1/64"	1/128"	1/256"	1/512"	1/1024"	1/2048"	1/4096"								
320' - 320.4' light green altered dike increased magnetite veining for 1-2' on either side of dike.	305' - 310'	5.0																					
	310' - 315'	5.0																					
	315' - 320'	4.9																					
	320' - 325'	5.0																					
	325' - 330'	3.8																					
326' - 339' fault zone.	330' - 335'	3.0																					
327' - 328' fault zone.	335' - 340'	4.1																					
331.3' - 332' fault zone.	340' - 345'	5.0																					
333' - 333.5' lost core.	345' - 350'	4.8																					
326.2' - 329.5' lost core.	350' - 353'	2.0																					
331' - 335' blocky.																							
337' - 339' blocky.																							
350' - 353' blocky.																							
353' End of Hole.																							

LOGGED BY: B. Durhan & R.F. Kaltwasser

DRILLED BY: D. Desjardins & L. Desjardins.

[Handwritten signature]