



010

# Diamond Drilling

Township of HARKER

Report NO 20

Work performed by: Newmex Gold Resources

Claim NO	Hole NO	Footage	Date	Note
L 430919	NX-1	217'	Oct/75	(1)
	NX-2	247'	Oct/75	(1)
	NX-3	267'	Oct/75	(1)
L 430918	NX-4	250'	Oct/75	(1)
L 414447	NX-5	507'	Nov/75	(1)

1487'

### Notes:

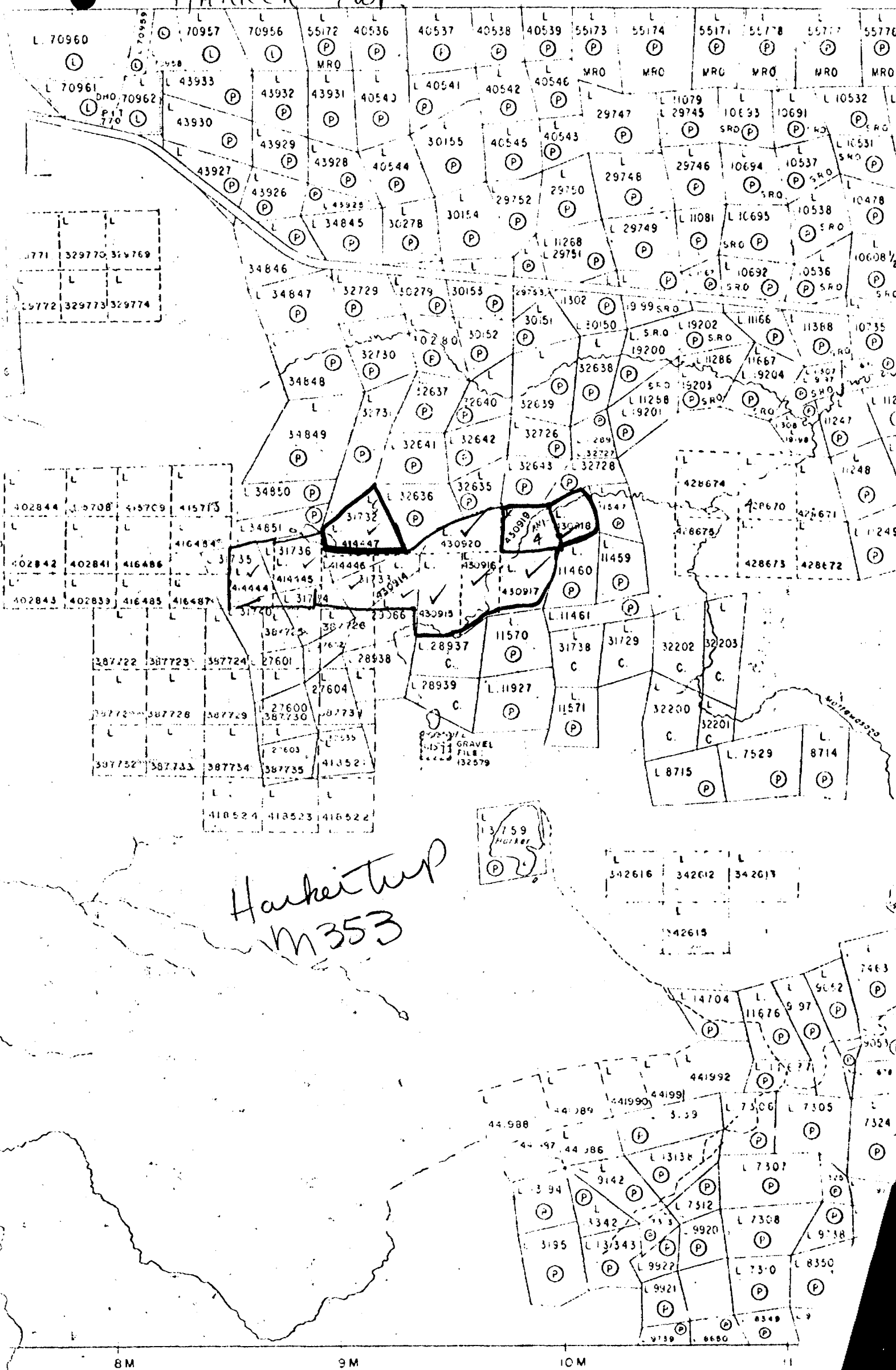
(1) #18-76

LAMPLUGH TWP M-358

# 18-76

NEWMEX GOLD RESOURCES INC.

HARKER TWP



Harker Twp  
M 353

8M 9M 10M 11

DIAMOND DRILL LOG

PROPERTY	: Newmex Gold Resources Inc.	HOLE NO.	: NX-1
LOCATION	: Harker Twsp., District of Cochrane, Ontario.	DIP	: -45°
CLAIM	: 430919	BEARING	: Due South
LATITUDE	: 13-N; 620 ft. S of #1 Post of Claim 430919	LENGTH	: 217 ft.
DEPARTURE	: L-28-E; 785 ft. W of #1 Post of Claim 430919	STARTED	: Oct. 20, 1975
CORE SIZE	: AQ	COMPLETED	: Oct. 21, 1975
		LOGGED BY	: H. Dowhaluk
		DRILLED BY	: Continental D.D. Co. Ltd.

\*\*\*\*\*

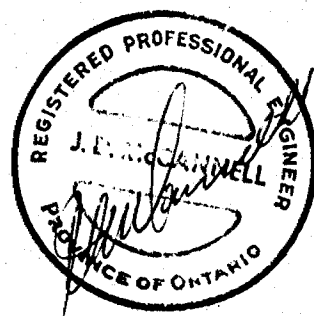
0-32.0 :OVERBURDEN. Casing.  
 32.0-61.4 :CHLORITE-CARBONATE TUFFITE. Water-reworked tuff w some  
 sections showing coarser lapilli-sized material. From  
 10-20% carbonate or qtz-carbonate lines, streaks, lenses  
 and blebs. Less than 1% very fine dissem py and rare cpy.  
 61.4-62.3 :RED TUFFITE. Dull pinkish, f-grd. Mostly orthoclase w some  
 chlorite. Appears to represent arkosic material.  
 62.3-64.5 :CHLORITE-CARBONATE TUFFITE. Dk green. As above.  
 64.5-65.0 :RED TUFFITE.  
 65.0-68.3 :MICA LAMPROPHYRE. Black, med-grd. Mostly biotite w some  
 white plagioclase grains (kersantite dike?). Compact,  
 massive.  
 68.3-80.0 :CHLORITE-CARBONATE TUFFITE. As above. Grades into next.  
 80.0-92.1 :CHLORITE-SERICITE-CARBONATE TUFFITE. As above but gray color.  
 Some graphite in places in small amounts. Hard siliceous.  
 Some fine dissem py. Pyrite is whitish (pale-colored),  
 in rough cubes or grains, often w striations.  
 92.1-104.1 :RED PORPHYRY. Lt brick-red color. Seriate euhedral and sub-  
 hedral phenocrysts of white plagioclase w strong tendency  
 to rectangular forms. Some phenos w coronas of a reddish  
 color (hematitized). Some fine pyrite dissem throughout  
 but mostly near contacts which are irregular & lobate.  
 104.1-119.7 :SILICEOUS SERICITE-GRAPHITE TUFFITE. Gray, hard, siliceous.  
 Some graphite and many lapilli-sized, rhyolitic particles  
 or larger.  
 119.7-149.0 :DACITE. Gray. Mainly massive, dense but w considerable  
 fracturing, some qtz-carb lines and some tuffaceous mat-  
 erial in places. May be a welded tuff. Some fine py dissem  
 or in local aggregates.  
 149.0-217.0 :ANDESITE. Dk green. Grading from above very gradually. Dense,  
 little or no pyrite or qtz-carb streaking.  
 156.0-157.0 : Rhyolitic lapillistone.

217 ft. - End of Hole

LIST OF SAMPLES

			ozs Au/t
#56	32.0-37.0	5.0 ft.	0.01
#57	37.0-47.0	10.0	Tr
#58	47.0-57.0	10.0	Tr
#59	57.0-68.0	11.0	0.01
#60	68.0-78.0	10.0	0.01

(cont.)

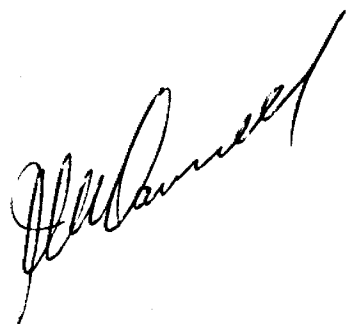


			ozs Au/t
#61	78.0-88.0	10.0 ft.	0.005
#62	88.0-93.0	5.0	0.005
#63	93.0-103.0	10.0	0.01
#64	103.0-108.0	5.0	0.02
#65	108.0-113.0	5.0	Tr
#66	113.0-123.0	10.0	0.01
#67	123.0-133.0	10.0	0.01
#68	133.0-137.0	4.0	0.01
#69	137.0-139.0	2.0	Tr
#70	139.0-147.0	8.0	Tr
#71	147.0-152.0	5.0	0.01
#72	156.0-157.0	1.0	0.03

\*\*\*\*\*

## AVERAGE

32.0-152.0 120.0 ft. 0.007 ozs Au/t



DIAMOND DRILL LOG

PROPERTY	: Newmex Gold Resources Inc.	HOLE NO.	: NX-2
LOCATION	: Harker Twsp., District of Cochrane, Ontario.	DIP	: -45°
CLAIM	: 430919	BEARING	: Due North
LATITUDE	: 12+50' N; 240 ft. S of #4 Post of Claim 430919	LENGTH	: 247 ft.
DEPARTURE	: 20+60' E; 60 ft. E of #4 Post of Claim 430919	STARTED	: Oct. 23, 1975
CORE SIZE	: AQ	COMPLETED	: Oct. 24, 1975
		LOGGED BY	: H. Dowhaluk
		DRILLED BY	: Continental D.D. Co. Ltd.

\*\*\*\*\*

0-13.0 : OVERBURDEN. Casing.  
 13.0-27.6 : DIABASIC GREENSTONE. Dk green, med-fine-grd. Small anhedral crystals or laths of white plagioclase and dark grains of chloritic material. Disseminated grains of magnetite-the rock is noticeably magnetic. This rock may be the recrystallized weathered zone on top of the first esite flows and perhaps fills a hollow. (Tops in pillows in vicinity face south).  
 27.6-28.7 : PINK FELSITE. Lt brick-red pinkish color. Mostly felspathic w few grains of quartz. Massive, dense. Probably a dense sediment.  
 28.7-32.1 : ANDESITE. Dark green. Massive, dense.  
 32.1-74.3 : RHYOLITE. Lt gray, cherty, dense w buffy shading. Up to 1% dissem pyrite. After 50.0 ft., somewhat fine granular and may be welded tuff.  
 74.3-86.6 : ACID TUFF. Ash and tuff w occasional rhyolitic lapilli. Some graphite content. Dissem py.  
 86.6-88.7 : PYROCLASTIC BRECCIA. Fragments up to 1 or 2"; shattered, rhyolitic. Abundant 2-3% py in fractures which are qtz filled.  
 88.7-91.7 : PYROCLASTIC BRECCIA. As above but much smaller fragments and much less pyrite.  
 91.7-92.0 : CALCITE VEIN. White, coarse crystalline.  
 92.0-181.0 : ACID TUFF. Med gray color. Siliceous, small amounts of graphite. Mostly dust and ash sized particles. Some schistosity @ 50° to core angle. Some dissem py. Much of it probably a welded tuff.  
 181.0-208.5 : CHLORITE-CARBONATE TUFFITE. At 70° to core. Dk green w 10-20% qtz-carb lensing. Very fine dissem py. Grading into next.  
 208.5-247.0 : ANDESITE. Dk green, dense, massive. Some tuff in spots. No qtz-carb lensing.

END OF HOLE - 247 ft.

LIST OF SAMPLES

			ozs Au/t
#2003	13.0-17.0	4.0 ft.	Tr
#2002	17.0-20.0	3.0	Tr
#2001	20.0-22.0	2.0	Tr
#1	22.0-27.0	5.0	0.23
#2	27.0-32.0	5.0	0.10
#3	32.0-37.0	5.0	0.02

(cont)

			ozs Au/t
#4	37.0-38.0	1.0 ft.	0.06
#5	38.0-43.0	5.0	0.06
#6	43.0-48.0	5.0	0.01
#7	48.0-53.0	5.0	0.03
#8	53.0-58.0	5.0	0.01
#9	58.0-63.0	5.0	0.02
#10	63.0-68.0	5.0	0.02
#11	68.0-73.0	5.0	0.04
#12	73.0-75.2	2.2	0.02
#13	75.2-82.0	6.8	Tr
#14	82.0-86.5	4.5	0.19
#15	86.5-88.5	2.0	0.14
#16	88.5-92.0	3.5	0.06
#17	92.0-97.0	5.0	0.02
#18	97.0-102.0	5.0	Tr
#19	102.0-107.0	5.0	Nil
#20	107.0-112.0	5.0	Nil
#21	112.0-117.0	5.0	Nil
#22	117.0-122.0	5.0	Tr
#23	122.0-127.0	5.0	Tr
#24	127.0-132.0	5.0	Nil
#25	132.0-137.0	5.0	0.01
#26	137.0-142.0	5.0	Tr
#27	142.0-147.0	5.0	0.02
#28	147.0-148.5	1.5	Tr
#29	148.5-153.5	5.0	Tr
#30	153.5-156.0	2.5	Tr
#31	156.0-163.0	7.0	Tr
#32	163.0-169.0	6.0	Tr

(cont.)

			ozs Au/t
#33	169.0-176.0	7.0 ft.	Tr
#34	176.0-178.0	2.0	Tr
#35	178.0-188.0	10.0	0.01
#36	188.0-194.0	6.0	Tr
#37	194.0-195.0	1.0	0.03
#38	195.0-207.0	12.0	Tr

\*\*\*\*\*

## AVERAGES

22.0-32.0 10.0 ft. 0.165 ozs Au/t

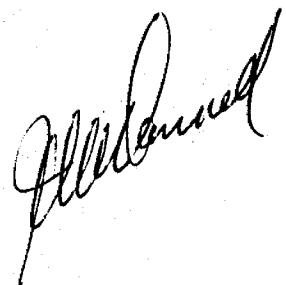
and

82.0-88.5 6.5 ft. 0.175 ozs Au/t

82.0-97.0 15.0 ft. 0.096 ozs Au/t

Also:

22.0-97.0 75.0 ft. 0.063 ozs Au/t



DIAMOND DRILL LOG

PROPERTY	: Newmex Gold Resources Inc.	HOLE NO.	: NX-3
LOCATION	: Harker Twsp., District of Cochrane, Ontario.	DIP	: -45°
CLAIM	: 430919	BEARING	: Due North
LATITUDE	: 12+20 N; 295 ft. S. of #4 Post of Claim 430919	LENGTH	: 267 ft.
DEPARTURE	: 25+00 E; 500 ft. E. of #4 Post of Claim 430919	STARTED	: Oct. 26, 1975
CORE SIZE	: AQ	COMPLETED	: Oct. 27, 1975
		LOGGED BY	: H. Dowhaluk
		DRILLED BY	: Continental D.D. Co. Ltd

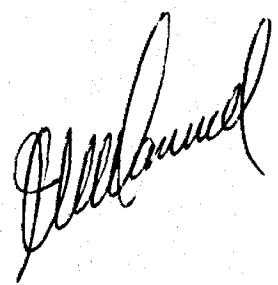
\*\*\*\*\*

0-13.0 :OVERBURDEN. Casing.  
 13.0-67.0 :ANDESITE. Dk green-gray. Abundant seams w bright green epidote as lenses or 1" zones associated w some py. Rock noticeably magnetic w dissem grains or small streak of magnetite. Rare pink calcite lenses.  
 67.0-87.0 :PYROCLASTIC BRECCIA. At 50° to core. Indistinct, elongated fragments up to 2" long. Siliceous, graphitic, w fragments of greenish-yellow-whitish rhyolite. Some crystal tuff (74.2-79.0). Grades into next. Fine dissem py.  
 87.0-113.1 :SILICEOUS GRAY TUFF. Med gray, shattered. Probably some fragmental material. Cut up by small qtz-carb lines in several directions. Fine dissem py, locally quite abundant. Some reddish material present.  
 113.1-131.5:RED TUFFITE. A dark green tuffite full of qtz-carb lenses, fracture fillings & blebs. Colored red w hematite. Some crystal tuff in spots. Dissem py or small local aggregates.  
 131.5-153.6:GREEN TUFFITE. Dk green color. As above but w little or no hematite.  
 153.6-185.0:RED TUFFITE. As before but quite so red, more chlorite.  
 185.0-215.0:GREEN TUFFITE. Grades into next. Some qtz lensing towards end.  
 215.0-267.0:ANDESITE. About 10-15% epidote in patches, lines or lenses. Dense, dk green, massive.

END OF HOLE - 267 ft.

LIST OF SAMPLES

			ozs Au/t
#39	67.0-77.0	10.0 ft.	0.02
#40	77.0-85.0	8.0	0.01
#41	85.0-87.0	2.0	Tr
#42	87.0-97.0	10.0	0.01
#43	97.0-107.0	10.0	Tr
#44	107.0-117.0	10.0	0.01
#45	117.0-127.0	10.0	Tr
#46	127.0-137.0	10.0	Tr
#47	137.0-147.0	10.0	Tr
#48	147.0-157.0	10.0	Tr



(cont)



DIAMOND DRILL LOG

PROPERTY	: Newmex Gold Resources Inc.	HOLE NO.	: NX-4
LOCATION	: Harker Twp., District of Cochrane, Ontario.	DIP	: -45°
CLAIM	: 430918	BEARING	: Due North
LATITUDE	: 12+30 N; 690 ft. S. of #4 Post of Claim 430918	LENGTH	: 250 ft.
DEPARTURE	: L-36-E ; 0 ft. E. of #4 Post of Claim 430918	STARTED	: Oct. 28, 1975
CORE SIZE	: AQ	COMPLETED	: Oct. 29, 1975
		LOGGED BY	: H. Dowhaluk
		DRILLED BY	: Continental D.D. Co. Ltd.

\*\*\*\*\*

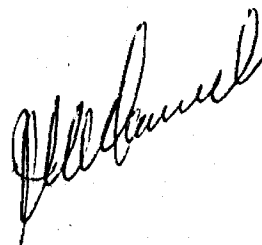
0-10.0 : OVERBURDEN. Casing.  
 10.0-14.5 : ANDESITE. Dk green-gray, dense, massive.  
 14.5-89.4 : INTERMEDIATE PYROCLASTICS. Dacitic composition w rhyolitic fragments 1/2-2" or more, indistinct. Some graphite in spots. 10% qtz-carb lines and lenses, shattered. Med-dk gray color, siliceous. Dissem py. Welded tuff in part.  
 89.4-94.8 : RED PORPHYRY. Brick red color. High K-feldspar content. Dense matrix w subhedral phenocrysts of whitish feldspar.  
 94.8-98.3 : GRAY TUFF. Similar to pyroclastic zone above but smaller particles.  
 98.3-102.3 : RED PORPHYRY. As above but lighter colored and shattered w chlorite in fractures. Phenos less distinct.  
 102.3-119.5 : GRAY TUFF. Some chloritic material. Qtz-carb lensing and blebs w some feldspar crystals (crystal tuff). At 45° to core. Grades into next.  
 119.5-154.0 : CHLORITIC TUFFITE. Dk green w abundant carb and qtz-carb lines and lenses (10-20%). Dissem py.  
 154.0-158.0 : RED FELSITE. Dense, reddish rock w high K-feldspar content. Could be a sediment.  
 158.0-207.5 : ANDESITE. Dk green. Massive, less than 1% qtz-carb lensing. Occasional epidote & zoisite.  
 207.5-209.1 : RED-GRAY FELSITE. Dense to f-grained, compact. Could be arkosic material.  
 209.1-241.5 : ANDESITE. As above.  
 241.5-247.5 : RED FELSITE. As above.  
 247.5-250.0 : ANDESITE.

END OF HOLE - 250 ft.

LIST OF SAMPLES

			ozs Au/t
#73	14.5-23.0	8.5 ft.	0.01
#74	23.0-33.0	10.0	0.01
#75	33.0-43.0	10.0	Tr
#76	43.0-53.0	10.0	Tr
#77	53.0-63.0	10.0	Tr
#78	63.0-73.0	10.0	0.01
#79	73.0-83.0	10.0	0.01
#80A	83.0-88.0	5.0	Tr
#80B	88.0-95.0	7.0	0.05
#81	95.0-102.5	7.5	0.01

(cont)



#82	102.5-110.0	7.5	ozs Au/t 0.01
#83	110.0-120.0	10.0	0.01

\*\*\*\*\*

## AVERAGES

88.0-95.0	7.0 ft.	0.05 ozs Au/t
	or	
14.5-120.0	105.5 ft.	0.01 ozs Au/t

DIAMOND DRILL LOG

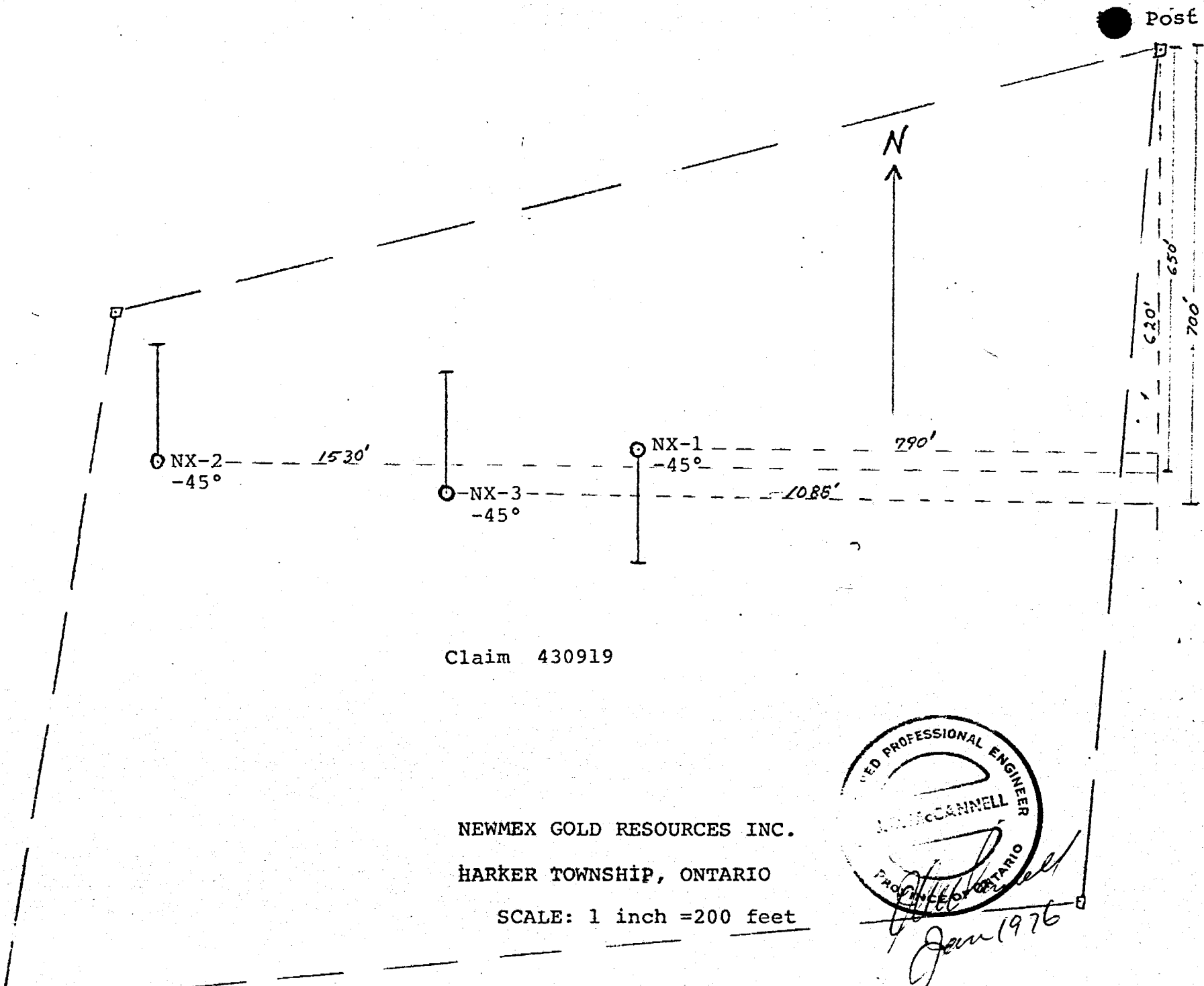
PROPERTY	: Newmex Gold Resources Inc.	HOLE NO.	: NX-5
LOCATION	: Harker Twsp., District of Cochrane, Ontario.	DIP	: -45°
CLAIM	: 414447	BEARING	: Due South
LATITUDE	: 12+50N ; 860 ft. S. of #1 Post of Claim 414447	LENGTH	: 507 ft.
DEPARTURE	: L-12-W ; 30 ft. W. of No. 1 Post of Claim 414447	STARTED	: Nov. 1, 1975
CORE SIZE	: AQ	COMPLETED	: Nov. 3, 1975
		LOGGED BY	: H. Dowhaluk
		DRILLED BY	: Continental D.D. Co. Ltd.

\*\*\*\*\*

0-42.0 : OVERBURDEN. Casing.  
 42.0-51.7 : ANDESITE. Dk green-blue-gray, massive, dense to f-grd, compact.  
 51.7-52.3 : SYENITE. Pinkish red. Med grd.  
 52.3-90.0 : ANDESITE. As above.  
 71.9-72.3; 73.3-73.6; 77.0-77.1, 78.0-79.0: Red syenite, slightly porphyritic.  
 90.0-103.6 : SYENITE. Faintly porphyritic. 1/2" zone of grain gradation on first contact suggesting sedimentary origin (granitic wash).  
 103.6-143.6: ANDESITE.  
 123.0-123.3: Red syenite, brecciated.  
 143.6-159.5: SYENITE. Indistinct whitish phenocrysts of feldspar (1/4") in reddish groundmass. Occasional small streak of py.  
 159.5-206.5: ANDESITE.  
 186.0-186.5: Pinkish white felsite.  
 206.5-213.5: DIORITE. Med-grd. Lt greenish gray w dark speckling. Greenish white feldspar w blades of altered hornblende. Becomes a felsitic rock towards next contact.  
 213.5-220.0: ANDESITE. As above.  
 220.0-228.6: SYENITE. No phenocrysts.  
 228.6-245.8: ANDESITE.  
 245.8-248.4: SYENITE.  
 248.4-250.8: ANDESITE.  
 250.8-253.3: SYENITE.  
 253.3-284.0: ANDESITE.  
 257.5-257.8: Syenite.  
 284.0-285.0: SYENITE.  
 285.0-287.0: ANDESITE.  
 287.0-292.0: SYENITE. Last 2 ft. brecciated and felsitic w much greenstone material.  
 292.0-317.0: ANDESITE.  
 317.0-340.0: SYENITE. Somewhat felsitic w incipient pegmatitic texture.  
 340.0-360.0: GRAY FELSITE. Lt gray, felsitic w hornblende needles. Dense, compact. Possibly a silicified mudstone.  
 360.0-371.0: ANDESITE.  
 371.0-432.9: SYENITE.  
 432.9-436.6: ANDESITE.  
 436.6-437.0: SYENITE.  
 437.0-476.5: ANDESITE.  
 476.5-479.6: SYENITE.  
 479.6-505.0: ANDESITE.  
 505.0-507.0: GRAY FELSITE. Siliceous.

END OF HOLE @ 507 ft.

NO SAMPLES TAKEN.

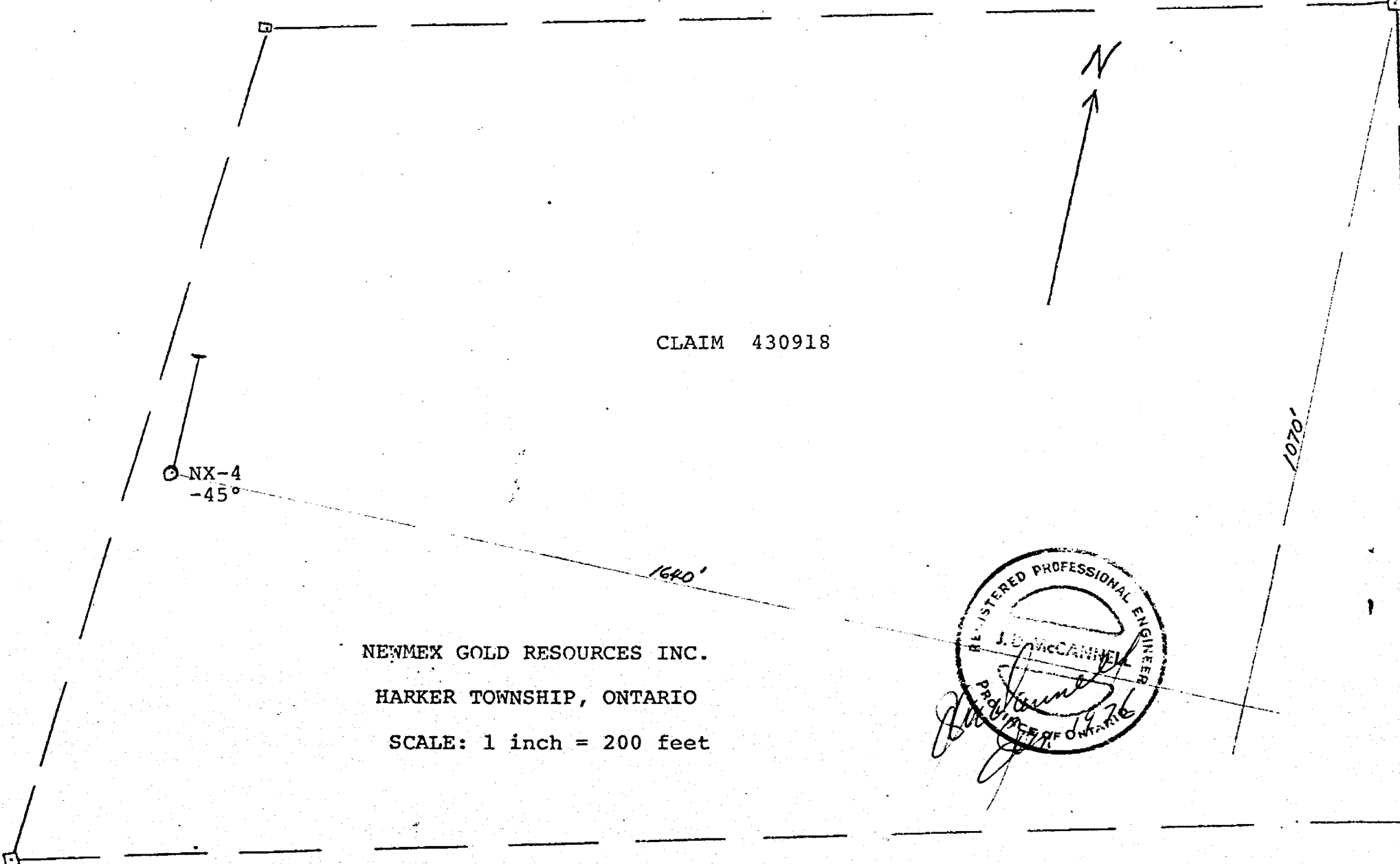


Claim 430919

NEWMEX GOLD RESOURCES INC.  
HARKER TOWNSHIP, ONTARIO  
SCALE: 1 inch = 200 feet

REGISTERED PROFESSIONAL ENGINEER  
M. MCCANNELL  
PROVINCE OF ONTARIO  
*M. McCannell*  
Jan 1976

#1 Post



CLAIM 430918

NX-4  
-45°

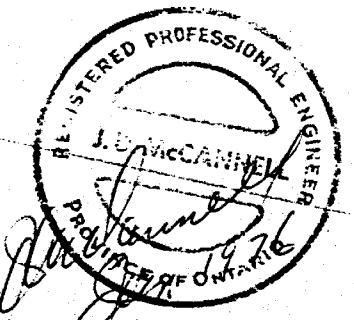
1640'

1070'

NEWMEX GOLD RESOURCES INC.

HARKER TOWNSHIP, ONTARIO

SCALE: 1 inch = 200 feet



# 1. Post

N

860'

DDH NX-5  
-45°

CLAIM 414447.

NEWMEX GOLD RESOURCES INC.  
HARKER TOWNSHIP, ONTARIO  
SCALE: 1 inch = 200 feet

