



32E04SW0011 10 ABBOTSFORD

010

Diamond Drilling

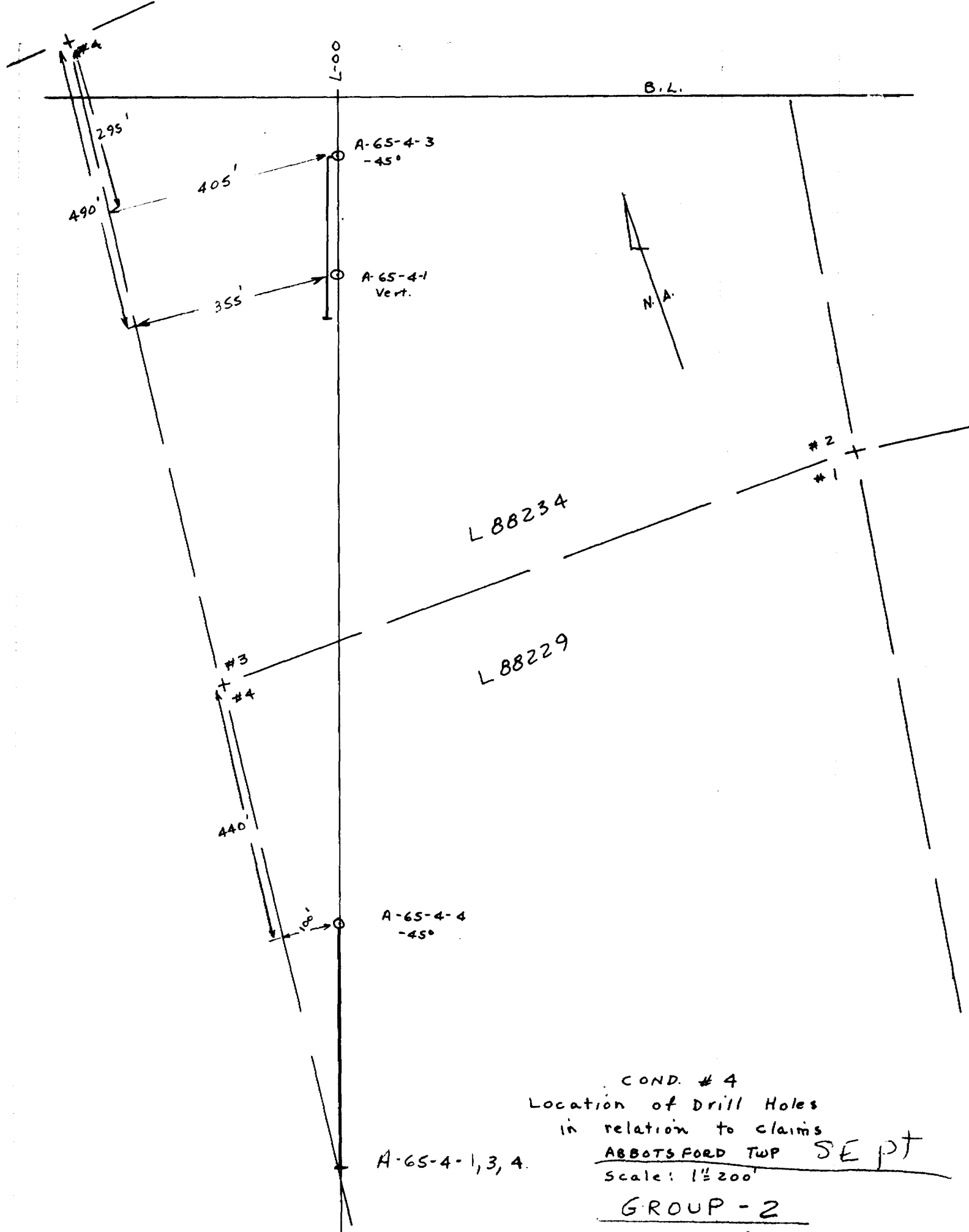
Township OF ABBOTSFORD

Report NO: 10

Work performed by: CANADIAN SUPERIOR EXPLORATION

Claim NO	Hole NO	Footage	Date	Note
L 88234	A-65-4-1	52' 11"	June/65	
	A-65-4-3	401'	Oct/65	
L 88249	A-65-4-2	504'	Oct/65	
L 88228	A-65-4-4	583' <u>1540' 11"</u>	Oct/65	

Notes:

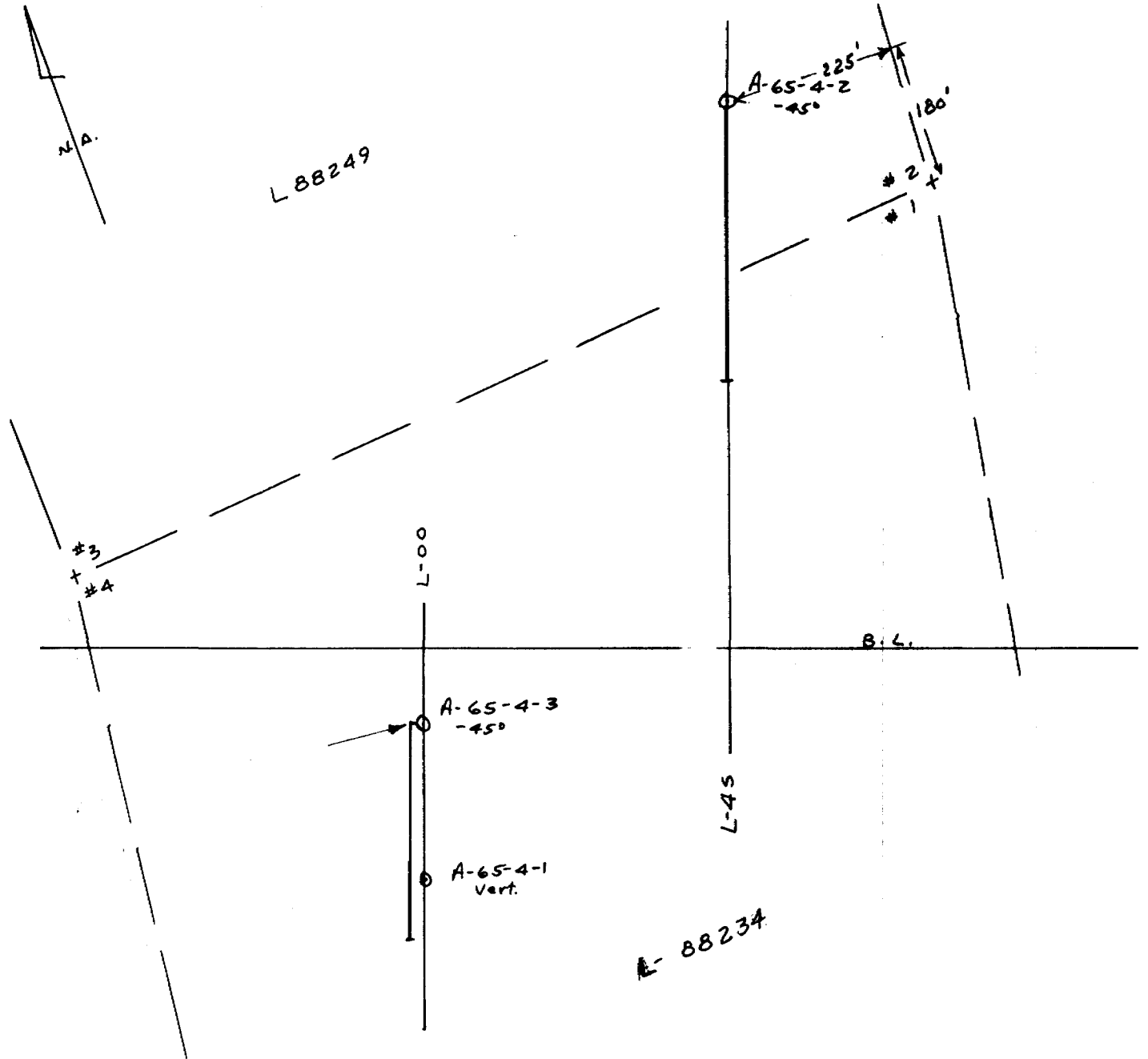


A-65-4-1, 3, 4.

COND. # 4
 Location of Drill Holes
 in relation to claims
 ABBOTSFORD TWP SE PT
 Scale: 1" = 200'

GROUP - 2

D. E. Leigh P. Eng



COND. #4
 Location of Drill Holes
 in relation to claim's
 ABBOTS FORD TWP
 Scale: 1"=200'

GROUP 1

(A-65-4-2)
 O. E. Leigh P. Eng.

CANADIAN SUPERIOR EXPLORATION LIMITED
DIAMOND DRILL RECORD

HOLE No: A-65-4-4
PAGE No: 2

FOOTAGE		DESCRIPTION	SAMPLE No:	FOOTAGE		LENGTH						
from	to			from	to							
		381.0' - 403.0' - more garnets by much carb.										
		403.0' - 422.4' - some carb. stringers.										
422.4'	423.4'	Quartz vein - barren.										
423.4'	447.9'	Grey to mauvish micaceous schist with some narrowly-banded argillaceous sections - odd section light-grey siliceous schist all cut by carb. stringers - schistosity 70° to core - tuffs - low py. - odd speck po.										
447.9'	448.7'	Quartz vein - barren.										
448.7'	450.0'	Narrowly-banded slaty tuffs? - many carb. stringers - sli. py.										
450.0'	450.8'	Quartz-carbonate vein - barren.										
450.8'	462.0'	Dark-grey argillaceous & chloritic schist in places - quite altered - cut by 2" quartz vein with chloritic inclusion - 3" schist alongside w.m. po. - conductive.										
462.0'	469.0'	Grey to greenish narrowly-banded tuffs or seds at 60° to core - cut by carb. stringers.										
469.0'	529.6'	Garnetiferous - dark-grey siliceous & micaceous seds or tuffs - fairly massive - sections with fair dissem. py & po - schistosity 75-80°.										
529.6'	583.0'	Light to dark-grey tuffs - fairly siliceous - 535' to end some garnetiferous sections - schistose at 70° to core with carb. & quartz stringers scattered sections min. with po. and py.										
	583.0'	END OF HOLE										

Approved
D. G. King