



32E13SE0050 14 ATKINSON LAKE

010

Diamond Drilling

Area of ATKINSON LAKE

Report N^o 14

Work performed by: KESAGAMI SYNDICATE

Claim N ^o	Hole N ^o	Footage	Date	Note
L 68901	12-2	220.0'	June/59	

Notes:

HEWIS GR.

L 14
68967

10

LOWER DETOUR L. AREA
ATKINSON L. AREA

VANDETTE L.

L
69093
13

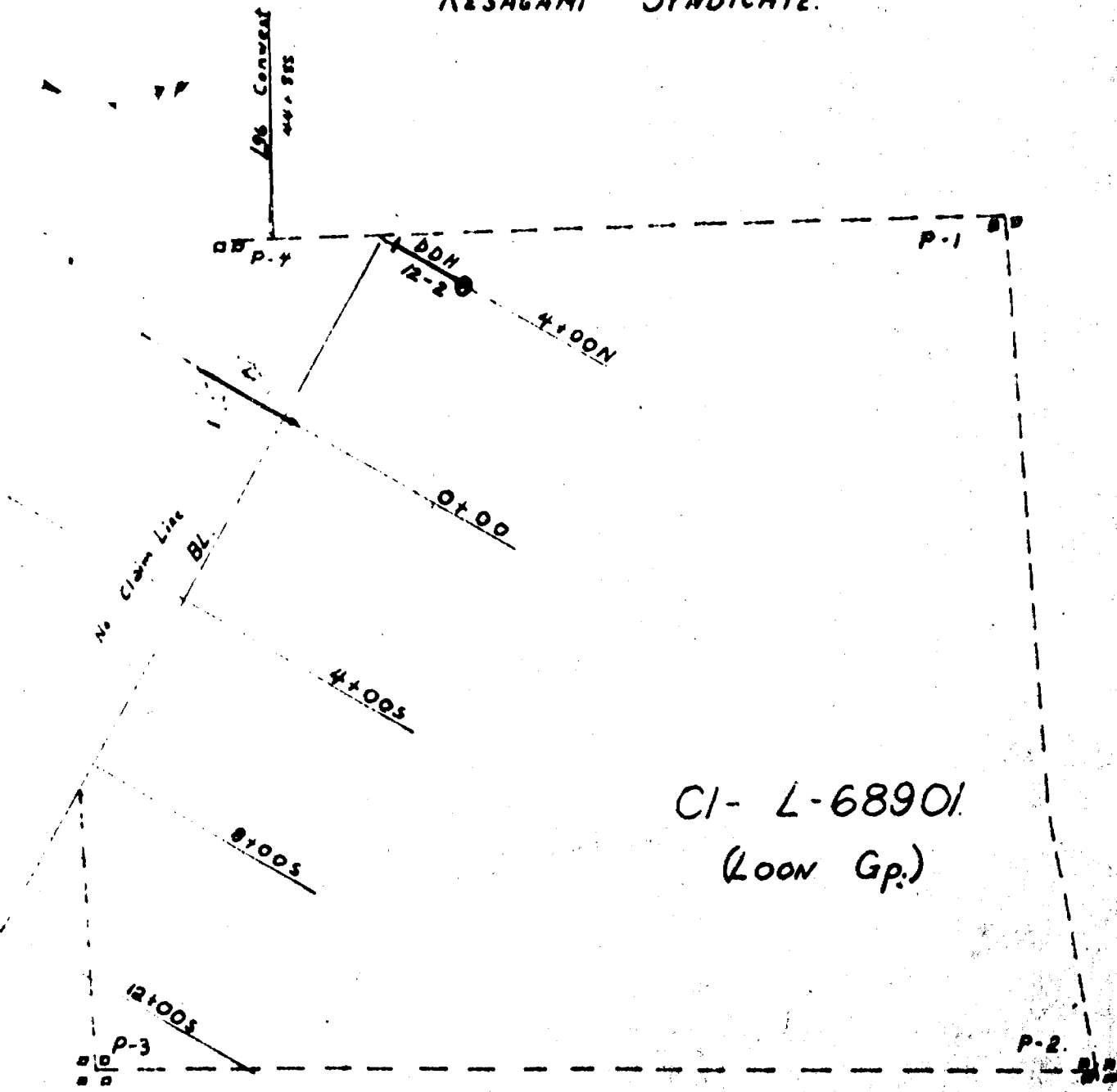
L 13
69095

LOON GR.

L
68911
12

L 8
68901

LOCATION CLAIM Map
 D.D.H. 12-2
 KESAGAMI SYNDICATE.



CI-L-68901
 (Loon Gp.)

ASSESSMENT WORK
 T-672

Scale: 1"=300'

O. LEIGH.
 10/3/54.

D.D.H. 12-2

KESAGAMI SYNDICATE
(LOON GP)

Collar

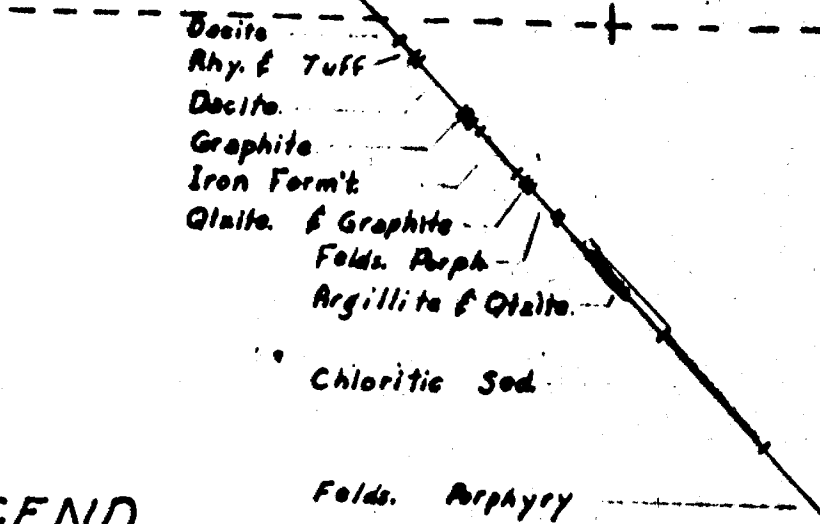
45°

E-M X-Over

800 N45°W

B.L.

O.B.



End of hole - 2000'

LEGEND

- 0-5% Sulphides.
- 6-10% "
- 11-20% "
- 10-20% Pyrr.

Collar Location:
Line 4+00N; 1+80E.

Scale: 1" = 30'

O. LEIGH
4/6/58

ASSESSMENT WORK

1-672

40-100

Location _____ (North) (South)

Location _____ (East) (West)

Baseline No. L4N, 180E

Dip at Collar 95°

Bearing Astr. N 85° W

Assumed Mag. Dec'n 12° Elevation at Collar _____

ACID TESTS	FOOTAGE	DIP ANGLE
	112	46 1/2

DIAMOND DRILL LOG AND SAMPLE RECORD

File No. _____

D.D.H. No. 12-2

200 N 5 R,
Page 1

Property name KESAGAMI SW

Footage Drilled 220'

Province ONT.

Logged by O. LEIGHT

Started _____

Finished JUNE 2/59

Township 12 T 29 R 59

Claim No. L-62901

FOOTAGE FROM	FOOTAGE TO	LENGTH	DESCRIPTION		ESTIMATED % SUP.	WIDTH	SAMPLE NUMBER	GOLD OZ. AG	SILVER OZ. AG	COPPER % CU	ZINC % ZN	LEAD % PB						
			FORMATION	DETAILS														
0	99		Bx Casing	O.B														
2	106		Ax Casing	O.B														
105.0	105.2		Diabase	Green - med to coarse gr'd - Contact missing														ASSESSMENT WORK T-672
105.2	109.7		Dacite	Fine grained, light green colour - spotty appearance due to very irregular shaped, chloritic alteration spots - generally parallel to strike lines - lineation 75°-90° to core zone - Trace of pyrite Core missing 109.6-109.5														
109.7	112.8		Rhyolite	Med gr'd, light grey colour Biotite rich - Salt & pepper appearance Slight jointing evident Core broken 112.5-112.5. 60% missing														
112.8	113.6		Tuff	Fine grained - grey to brown Siliceous (Flow top?) Bedding 80' with core Irregular contact on next to rhy Broken core 113.5-113.6														
113.6	123.4		Dacite	Varies from med to fine gr'd light green colour - (Similar to 105.2-109.7) Highly altered & partially chloritized Slightly irregular contact 117.0														

Location (North) (South)

Location (East) (West)

Baseline No. 141, 1280 E

Dip at Collar 75"

Bearing Astr. N45° E

Assumed Mag. Decl'n 12° Elevation at Collar

ACID TESTS	FOOTAGE	DIP ANGLE
	112	76.5

File to

D.D.H. No. 12

Page 4

DIAMOND DRILL LOG AND SAMPLE RECORD

Property Name RESQUAMI STN.

Footage Drilled 220 (LUNA COP)

Province ONT.

Logged by O. LEIGH

Started 24/5/58

Finished 2/6/59

Township

Claim No. 6-68961

FOOTAGE FROM	FOOTAGE TO	LENGTH	DESCRIPTION		ESTIMATED % SULF.	WIDTH	SAMPLE NUMBER	GOLD OZ. AU	SILVER OZ. AG	COPPER % CU	ZINC % ZN	LEAD % PB						
			FORMATION	DETAILS														
112.6	123.4		Davite	Possible elongated qtz. 2mmp 1210-1215 Chlorite alteration spots 1/2" wide.														
123.2	125.8		Argillite	70% fine bed graphite - micr. qtz - Pyx fine ground in short minerals - cuts cc = 75-80° micr py - Possible sphalerite - very fine.	10%	pycc												
125.6	135.4		Tana Facies	Chloritic sulphide with very little or no magnetite - generally fine grained - Sulphides mainly pycc - Slightly mag.	5-10%	pycc												
				1226-1276 fine microlite at y. white in argillite with pycc 17%														
				Small drag fold 1227-1228 - 30% pycc (Replacement)														
				1302-1387 - 10% tabular pink qtz with qtz. 2mmp - 20% pycc														
				Tan. sph. - 122.1 & 12.8? Pyx - lower 2 microlite along bedding planes - often surrounded by graphite														
				12.5 - 12.8 - 20% pycc														

ASSESSMENT WORK
T-672

Location (North) (South)

Location (East) (West)

Baseline L 40' ; 1482E

Dip of Collar 45°

Bearing Astr. N 45° W

Assumed Mag. Decl'n 12° Elevation of Collar

ACID TESTS	FOOTAGE	DIP ANGLE
	112	46°

DIAMOND DRILL LOG AND SAMPLE RECORD

File No.

D.D.M. No. 12-2

Page 3

Property Name KESAGAMI SYN

Footage Drilled 220' (hoop cut)

Province ONT.

Logged by D. LEIGH

Started 2/5/59

Finished 2/6/59

Township

Claim No. L-68901

FOOTAGE FROM	FOOTAGE TO	LENGTH	DESCRIPTION		ESTIMATE % SUP.	WIDTH	SAMPLE NUMBER	GOLD OZ AM	SILVER OZ AG	COPPER % CU	ZINC % ZN	LEAD % PB	Notes	
			FORMATION	DETAILS										
134.4	144.3		Quartzite & graphite	Grey to white - med. grained quartzite becoming gradationally richer in graphite until massive (146.0-148.3)									ASSESSMENT WORK -672	
				138.8-139.8 - Slightly mag. 15% pyrrh. & 10% disc. py - in weakly & disc.	25% - Sulph.									
144.1	146.0		Felts Porphyry	Brown matrix, tan white felt. phoscestr. arg. to sub- rounded. Quartz micaceous & shows lineation. Slightly schistose. Shilled contacts. U. contact - oblique & chance 1' butt. caloused - (Blac. grained mica)										
146.0	147.0		Massive Graphite	Gratians micae quartzite & same sulphides which occur as micaceous spots along bedding planes - replacement. 146.0 - 147.3 - 5% py. 147.3 - 148.1 - 10% graph. 148.1 - 151.0 - 10% pyrrh. micae py. To 20 - 15.6%.	5-20%	24	Nil	Nil	0.05	0.52			None	
				151.0 - 152.0 - arbitrary contact with quartzite - below.										
146.6			Argillite & Quartzite	Whitish, med. grained quartzite occurring as 4-2" beds as sub rounded fragments in breccia zone										

Location (North) (South)

Location (East) (West)

Baseline No. L 4N ; 4 x 80E

Dip of Collar 45°

Bearing Astr. N 45° W

Assumed Mag. Dec'n 12° Elevation at Collar _____

ACID TESTS	FOOTAGE	DIP ANGLE
	112	46 1/2°

File No. _____

D.D.M. No. 12-2

Page 4

DIAMOND DRILL LOG AND SAMPLE RECORD

Property Name KESADACHY SYN

Footage Drilled 220 (L own Co.)

Previous DRIT

Logged by O. LEIGH

Started 29/5/59

Finished 2/6/59

Township _____

Claim No. L-68906

FOOTAGE FROM	FOOTAGE TO	LENGTH	DESCRIPTION		ESTIMATED % SULF.	WIDTH	SAMPLE NUMBER	GOLD OZ. AG.	SILVER OZ. AG.	COPPER % CU	ZINC % ZN	LEAD % PB						
			FORMATION	DETAILS														
151.0	156.5		Argillite	and/or rounded frag - in graphite zone is 50% graphite in bands of various widths	10% pyrite & graphite	155.8 - 156.7	25			0.09	0.73							
				155.8 - 157.0 - Widest breccia zone - Frag. of quartz - 1/2 - 1/4" - Sample taken - To Zaslav														
				Massive pyrite 156.7 - 157.0 & 157.9 - 158.1														
				Fine grained micropyc. in lenses & microlite throughout section	15% Sphalerite													
				Sphalerite - scattered throughout zone	4-1 - pyrite - 1%													
				To at chalc. at 156.0														
16.6	170.0		Strite	Very fine grained dirty quartz. Dark grey. Slightly bedded. Graphitic at upper contact becoming progressively less & less graphitic & pyrite towards the bottom & increasing amounts of chalcite.														
				163.6 - 165.0 - 10% pyrite 1% Sph. 10% pyrite														
				To chalc. at 163.9 & possible Zn														
				Blks of Sphal. at 169.1 & 169.8														
170.0	185.5		Sediment &	Gradual contact from the above. Arbitrarily placed														

ASS-SMEN WORK
T-672

62

Location (North) (South)

Location (East) (West)

Baseline *1000 1000*

Dip at Collar *7.5*

Bearing Astr. *N 75° W*

Assumed Mag. Dec'n *11* Elevation at Collar

ACID TESTS	FOOTAGE	DIP ANGLE

DIAMOND DRILL LOG AND SAMPLE RECORD

File Code

D.D.M. No.

Page

Property Name *KESWICK SIM. (Linn. Cpt.)*

Footage Drilled *220*

Province *Ont.*

Logged by *E. Leach*

Started *2/2/52*

Finished *2/6/52*

Township

Claim No. *1-68902*

FOOTAGE FROM	FOOTAGE TO	LENGTH	DESCRIPTION		ESTIMATED % SULF.	WIDTH	SAMPLE NUMBER	GOLD OZ. AU	SILVER OZ. AG	COPPER % CU	ZINC % ZN	LEAD % PB					
			FORMATION	DETAILS													
	1525		Soil?	<p>1525 - very partially chloritized light green med grade - lenticular outline, elongated, chlorite alteration spots</p> <p>Slightly sil - Minor graphite at base of soil</p> <p>5.4 ft. 1525 - several narrow bands up to 1" wide - suggesting possible altered glau.</p> <p>General bedding or banding 50° - 90° to core axis</p> <p>2" etc. area at 1967-1969.</p>													
	220		Feldspar Perthite	<p>1525 - small scattered lenses 1-2% approx.</p> <p>Muscovite - (near schistosity - 20 m. to 200 m. - 1700 ft. & 1800 ft.)</p> <p>presumably intensives</p> <p>1 mm to 2 mm phenocrysts</p> <p>Pinkish - glassy matrix with mica</p> <p>- Similar to sample at 1000 - 1200</p> <p>219-220 : 219.4 - 220 - Core</p>													

ASSESSMENT WORK
-672