

32E13SE0053 18 ATKINSON LAKE

010

Diamond Drilling

Area of ATKINSON LAKE

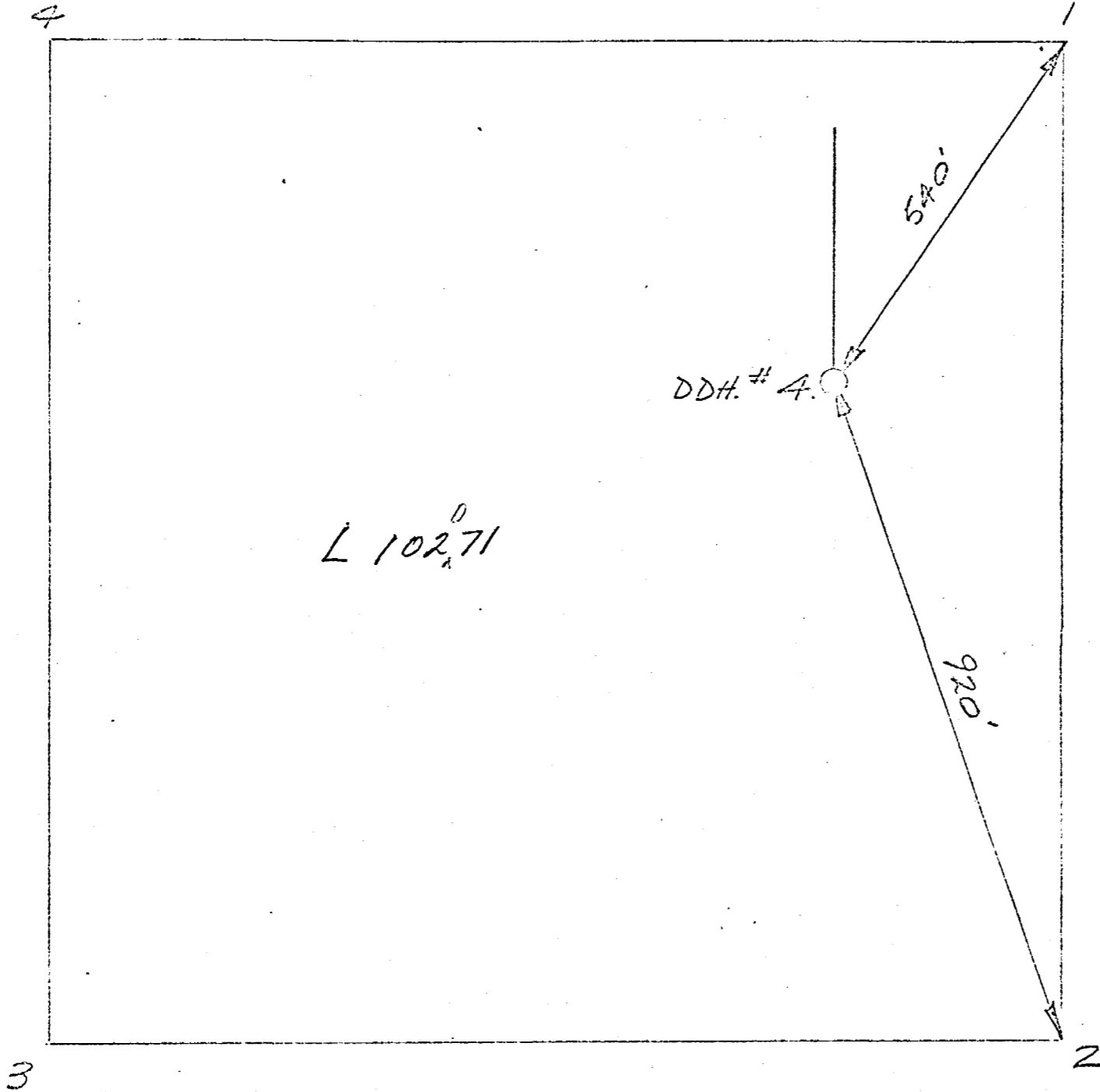
Report NO 18

Work performed by: SELCO EXPLORATION

Claim NO	Hole NO	Footage	Date	Note
L 102071	4	488.0'	Feb/68	

Notes:

118



ASSESSMENT WORK
T-1444

Scale: 1" = 200'

16/9/68

DIAMOND DRILL RECORD

HOLE NO. 4
SHEET NO 1
LOCATION

PROPERTY Detour Turgeon

BEARING
DIP COLLAR 50°

ELEVATION
TOTAL DEPTH 488
CORE SIZE AXI

STARTED FEB 5, 1968 COMPLETED Feb. 9, 1968

FROM	TO	DESCRIPTION	SAMPLE NO.	FROM	TO	CORE LENGTH	CORE RECOVERED	ASSAYS				REMARKS
								Cu.	Ni.	Au.	Ag.oz	
0	86	Overburden										
86	168	Gabbro, uniform 2 - 3 mm, amphibole: plagioclase = 2:1. 138 - 140 badly broken.										51° at 100'
168	174	2mm altered (talcose) gabbro with abundant fine magnetite.										
174	183	Porphyry: 2 - 3 mm feldspar-biotite porphyry.										
183	190	Altered (talcose) 2 mm magnetite rich gabbro. 187 - 188 badly broken core.										
190	301	Medium grained partly serpentized basic gabbro or pyroxenite with abundant (5%) skeletal magnetite in 2 - 4 mm patches. 229 - 2- 1/8" pyrrhotite seams. 232 - 233 serpentinite schist band 1/2" wide parallel to core.										
301	310	2 mm amphibolitized gabbro.										
310	311	Feldspar porphyry.										
311	322	Fine grained altered gabbro? 322 Gradational contact.										
322	331	Very fine grained basic rock. 326 - 327 5% disseminated pyrrhotite, trace chalcopyrite.	6011	326	327	1'0"		0.06	Tr.	Nil	0.03	ASSESSMENT WORK T-144

DRILLED BY _____

SIGNED G. Pollock

SELCO EXPLORATION COMPANY LIMITED
DIAMOND DRILL RECORD

HOLE NO. 4
SHEET NO 2
LOCATION

PROPERTY _____

BEARING
DIP COLLAR

ELEVATION
TOTAL DEPTH
CORE SIZE

STARTED

COMPLETED

FROM	TO	DESCRIPTION	SAMPLE NO.	FROM	TO	CORE LENGTH	CORE RECOVERED	ASSAYS				REMARKS
								Cu.	Ni.	Ag.	Au.	
331	334	Brecciated quartz bands 1/2 - 3" wide in fine biotite schist. 332 - 334'4" heavy pyrrhotite mineralization, subsidiary pyrite, minor chalcopyrite in mica schist, few 1" bands of massive sulphide.	6010	332	334	2.0		0.09	Nil	0.04	Nil	
334	338	Feldspar porphyry.										
338	342	Folded and brecciated quartz bands in biotite schist. Minor chalcopyrite, heavy po.	6009	338.2	342	3.0		0.13	Nil	0.03	Nil	
342	343	Biotite chlorite schist. 342 - 343 4" = 10% pyrrhotite in narrow bands. Minor chalcopyrite.	6008	342	343.4	1.4		0.15	Nil	0.05	Nil	
343	355	Basic tuff with lenticular bi. streaks @ 80°.										
355	362	Basic tuff continues. The section 342 - 362 contains sparse scattered pyrrhotite streaks and patches 1/8" wide which always have minor chalcopyrite (po:cpy - 10:1).										
362	398	Coarser basic tuff - no trace of sulphides.										
398	395	Feld-bi porphyry.										
395	411	Basic lava. Minor po-cpy at 411.										
411	416	Feldspar-bi porphyry.										
416	422	Basic lava.										

ASSESSMENT WORK

T-1420

DRILLED BY _____

SIGNED _____

SELCO EXPLORATION COMPANY LIMITED
DIAMOND DRILL RECORD

HOLE NO. 4
SHEET NO 3
LOCATION

PROPERTY _____

BEARING
DIP COLLAR

ELEVATION
TOTAL DEPTH
CORE SIZE

STARTED

COMPLETED

FROM	TO	DESCRIPTION	SAMPLE NO.	FROM	TO	CORE LENGTH	CORE RECOVERED	ASSAYS				REMARKS
22	423	Porphyry.										
25	488	Basic lava, subsidiary basic tuffs. Quartz and calcite stringers, rare po. patches.										

ASSESSMENT WORK
T-1444

DRILLED BY _____

SIGNED J. D. Pollock