



32L04SE9421 16 SUNDAY LAKE

010

Diamond Drilling

Area Sunday Lake

Report NO 16

Work performed by: Dome Exploration Ltd.

Claim NO	Hole NO	Footage	Date	Note
P 524505	157-1	400	Feb/83	(1)
P 524481	157-2	417	Mar/83	(1)

Notes: (1) #108-83



# DOME EXPLORATION (CANADA) LIMITED

LOCATION: 42+50S, 184+20E.	DIAMOND DRILL RECORD	HOLE NO	157-1
940'S, 710'W of #1 Post, Claim P.524505		PROPERTY: PROJECT 157 - Areas of Sunday	
AZIMUTH: 350°		Lake and West of Sunday Lake, Porcupine Mining Division, Ontario	
DIP: -52°	LENGTH: 400.0'	ELEVATION:	CLAIM NO: P.524505
STARTED: February 28, 1983	CORE SIZE: A.Q.	SYSTEM OF MEASURE: IMPERIAL	SECTION:
COMPLETED: March 2, 1983	DIP TESTS (CORRECTED): at 400' -51°30'		LOGGED BY: D. S. Hunt
PURPOSE: TO TEST A MAGNETIC HIGH AT 40+80S, 196+00E.		DATE LOGGED: March 3-4, 1983	

FOOTAGE		DESCRIPTION	SAMPLE				Au dwt/ton	Ag	Cu %	Zn %		
from	to		No.	from	to	Length						
0.0	52.0	CASING IN OVERBURDEN										
52.0	175.6	BASIC OR ULTRABASIC INTRUSIVE: Medium grey or greenish grey; soft; fine to very coarse grained; weakly to strongly magnetic. Mineralogy consists of 60% mafic minerals and 40% green feldspar. Rare hairline quartz stringers. Trace pyrite as fracture coatings. Very rare chalcopyrite specks. Rare shearing at 25-50° to core axis.										
		108.4-109.4: Thin calcite-quartz stringer at 15°.	59560	108.4	109.4	1.0	Tr					
		137.1-138.1: Two 0.1 inch quartz stringers at 15° lined with pyrite. 1% pyrite overall.	59561	137.1	138.1	1.0	Tr					
		164.7: Tiny pyrrhotite stringer. 175.6: Lower contact at 60°.										
175.6	267.7	BASIC VOLCANICS: Medium to dark grey or greenish grey; moderately hard to soft; fine to very fine grained. Weakly defined schistosity at 45-60°. Trace pyrite. A few intercalated acid tuff bands up to 2.7' thick; and a few basic or ultrabasic dykes up to 2.4' thick.										
		192.4-193.7: A few quartz stringers at various angles. Trace pyrite.	59562	192.4	193.7	1.3	Tr					

**DOME EXPLORATION (CANADA) LIMITED**

**DIAMOND DRILL RECORD**

HOLE No:	157-1
PAGE No:	2 of 3

FOOTAGE		DESCRIPTION	SAMPLE				Au dwt/ton	Ag	Cu %	Zn %		
from	to		No	from	to	Length						
		199.2-199.3: Pink granitic stringer at 45°.										
		206.0-206.4: Very tremolite-rich.										
		252.0-253.0: Abundant very thin quartz stringers at 75° with 1% chalcopyrite and trace pyrrhotite.	59563	252.0	253.0	1.0	0.80					
		254.0-255.0: 1% pyrite and 1% chalcopyrite, mainly associated with hairline quartz stringers.	59564	254.0	255.0	1.0	Tr					
267.7	307.7	BASIC OR ULTRABASIC INTRUSIVE: Similar to 52.0-175.6. Local weak schistosity at 45-60°.										
		276.5-277.6: Sheared fracture at 45° at 277.0 with trace molybdenite.	59565	276.5	277.6	1.1	Tr					
		307.7: Lower contact at 50°										
307.7	600.0	BASIC VOLCANIC FLOWS AND TUFFS: Similar to 175.6 to 267.7. A few intercalated acid and intermediate tuff bands up to 6.6' thick. Weakly defined schistosity at 45-85°.										
		317.7-318.7: A thin quartz stringer at 50° at 318.3. Trace pyrite.	59566	317.7	318.7	1.0	Tr					
		334.0-335.0: 0.4' quartz-chlorite zone. Trace pyrrhotite.	59567	334.0	335.0	1.0	Tr					
		350.3-351.3: Epidote-rich acid tuff with some hematite staining.	59568	350.3	351.3	1.0	Tr					
		354.9-355.5: Epidote-rich brecciated zone.	59569	354.9	355.5	0.6	Tr					



## DOME EXPLORATION (CANADA) LIMITED

LOCATION: 72+50S, 176+08E.	DIAMOND DRILL RECORD			HOLE NO 157-2
100'S & 1390'W of #1 Post, Claim P.524481	PROPERTY: PROJECT 157, Areas of Sunday Lake and West of Sunday Lake, Porcupine Mining Division, Ontario.			
AZIMUTH: 335°	CLAIM NO: P.524481 - 100' P.524484 - 317'			
DIP: -52°	LENGTH: 417'	ELEVATION:		
STARTED: March 3, 1983	CORE SIZE: A.Q.	SYSTEM OF MEASURE: IMPERIAL	SECTION:	
COMPLETED: March 5, 1983	DIP TESTS (CORRECTED): at 417' -44°30'		LOGGED BY: D. S. Hunt	
PURPOSE: TO TEST A MAGNETIC HIGH AT 71+00S, 176+00E.	DATE LOGGED: March 6-7, 1983			

FOOTAGE from to		DESCRIPTION	SAMPLE				Au dwt/ton	Ag	Cu %	Zn %		
			No.	from	to	Length						
0.0	90.0	CASING IN OVERBURDEN										
90.0	417.0	INTERMEDIATE AND BASIC GNEISS: Medium grey or greenish grey; very fine to medium grained, hard to soft; locally moderately to strongly magnetic due to magnetite; often banded; very rare garnets. This rock is likely metamorphosed basic volcanic flows, tuffs and agglomerates. Schistosity and gneissosity at 60-80° to core axis. A few thin quartz and epidote stringers. Trace pyrite.										
		90.0-93.5: Epidote and hematite rich, with a few hairline quartz stringers at various angles.	59648	90.0	93.5	3.5	Tr					
		99.9-101.9: Epidote-rich.	59649	99.9	101.9	2.0	Tr					
		121.1-122.3: 1% very fine pyrite.	59650	121.1	122.3	1.2	Tr					
		136.9-138.8: Fractured; epidote- and hematite-rich	59651	136.9	138.8	1.9	Tr					
		165.0-166.6: 1% disseminated pyrite.	59652	165.0	166.6	1.6	Tr					
		169.8-179.3: Three zones, up to 2.0' thick, have a variolitic appearance.										
		217.3-218.4: Hairline epidote stringer at 10°.	59653	217.3	218.4	1.1	Tr					

**DOME EXPLORATION (CANADA) LIMITED**

**DIAMOND DRILL RECORD**

HOLE NO: 157-2

PAGE NO: 2 of 3

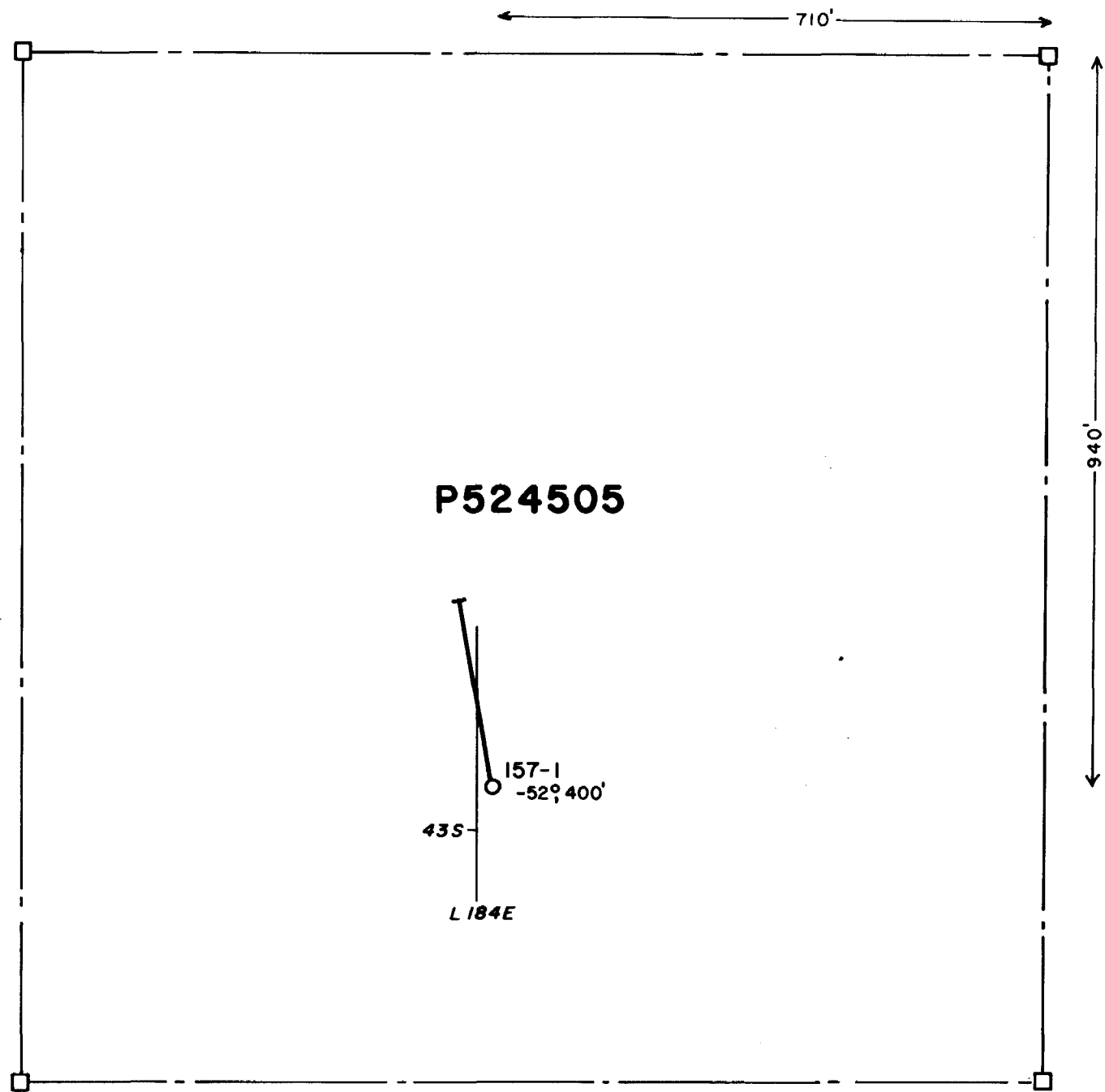
FOOTAGE from	to	DESCRIPTION	SAMPLE				Au dwt/ton	Ag	Cu %	Zn %	Reassay
			NO	from	to	Length					
		Trace pyrite.									
		235.2-236.2: Two very thin quartz stringers with trace pyrite, parallel to schistosity.	59654	235.2	236.2	1.0	Tr				
		262.0-263.8: Locally weakly epidotized. One hair-line epidote stringer subparallel to core axis; and a few thin quartz-epidote stringers at various angles. Trace pyrite.	59655	262.0	263.8	1.8	Tr				
		265.5-275.6: Trace pyrite.	59656	265.5	270.5	5.0	Tr				
			59657	270.5	275.6	5.1	Tr				
		287.7-288.7: 0.2' quartz stringer at 70°. Trace pyrite.	59658	287.7	288.7	1.0	Tr				
		298.2-301.7: Acid gneiss.	59659	298.2	301.7	3.5	Tr				
		- 300.7-301.7: Trace to 1% pyrite. One thin epidote-rich zone parallel to schistosity.									
		301.7-304.7: Trace to 1% pyrite.	59660	301.7	304.7	3.0	Tr				
		311.9-316.6: Moderate to abundant quartz stringers to 0.5', parallel to schistosity. Trace pyrite	59661	311.9	316.6	4.7	Tr				
		318.8-319.9: A moderate number of quartz stringers to 0.3', parallel to schistosity.	59662	318.8	319.9	1.1	Tr				
		328.0-330.9: Trace to 1% pyrite as widely scattered blebs.	59663	328.0	330.9	2.9	0.1				
		337.0-343.2: Abundant contorted quartz stringers to 0.1'.	59664 59665	337.0 342.0	342.0 343.2	5.0 1.2	0.1 Tr				
		345.6-346.6: 0.1' quartz stringer at 40° at 346.0	59666	345.6	346.6	1.0	Tr				

**DOME EXPLORATION (CANADA) LIMITED**  
**DIAMOND DRILL RECORD**

HOLE NO: 157-2  
PAGE NO: 3 of 3

FOOTAGE from	to	DESCRIPTION	SAMPLE				Au dwt/ton	Ag	Cu %	Zn %	Reassay
			NO	from	to	Length					
		356.4: Pyrite-coated fracture.									
		364.6-365.6: Two 0.1' quartz stringers at 50-70° Trace pyrite.	59667	364.6	365.6	1.0	Tr				
		369.6-370.7: Two 0.2' bleached (?), epidote-rich zones. Trace pyrite.	59668	369.6	370.7	1.1	2.2			2.4	
		381.5-381.9: 1-2% pyrite.									
		386.7-387.7: Three thin quartz stringers at 85°. 1% pyrite.	59669	386.7	387.7	1.0	Tr				
		394.6-397.4: 0.2' quartz stringer parallel to schistosity. Trace pyrite.	59670	394.6	397.4	2.8	Tr				
		403.3-404.2: Slightly bleached. A hairline epi- dote stringer at 20°. 1% pyrite.	59671	403.3	404.2	0.9	Tr				
		412.7-414.1: A moderate number of thin quartz stringers mainly parallel to schistosity. Trace pyrite.	59672	412.7	414.1	1.4	Tr				
417.0		END OF HOLE									
		Core stored at Dome Mine, South Porcupine, Ontario									
		Hole not cemented.									
		All casing left in hole.									
		Drilling by Bradley Brothers, Noranda, Quebec.									
		Core checked for radioactivity - nothing of interest.									
		Core checked for fluorescence. Rare calcite fluor- escences pale yellow.									





DOME EXPLORATION (CANADA) LTD.				
PROJ. 157 WEST SUNDAY LAKE, ONT.				
<b>DDH LOCATIONS</b>				
SCALE	DATE	BY	N.T.S. No.	DWG. No.
1" = 200'	Mar. 1983	J.K.	32-L-4	157-9

P524484

1390'

158-2  
-52,417'

735-

L 176E

P524481

←100'→



DOME EXPLORATION (CANADA) LTD.				
PROJ.157 WEST SUNDAY LAKE, ONT.				
DDH LOCATIONS				
SCALE	DATE	BY	N.T.S. No:	DWG. No:
1" = 200'	Mar1983	J.K.	32-L-4	157-10