



32L04SE9428 18 SUNDAY LAKE

010

Diamond Drilling

Area Sunday Lake

Report N^o 18

Work performed by: Dome Exploration Ltd.

Claim N ^o	Hole N ^o	Footage	Date	Note
P 524481	157-22	420	Mar/84	(1)
P 524483	157-23	400	Mar/84	(1)
P 524482	157-29	501	Feb/84	(1)
	157-30	500	Feb/84	(1)
	157-31	<u>500</u>	Feb/84	(1)

Notes: (1) #154-84

DOME EXPLORATION (CANADA) LIMITED

LOCATION: 72+00S, 177+00E. 50' South		DIAMOND DRILL RECORD		HOLE No	
1300' West of No. 1 Post, P.524481				157-22	
AZIMUTH: 335°		PROPERTY: PROJECT 157, Sunday L. and West			
		of Sunday Lake Areas, Porcupine Mining Division, Ontario			
DIP: -48°	LENGTH: 420.0'	ELEVATION:	CLAIM No: P.524481 - 15'		
			P.524484 - 407'		
STARTED: March 4, 1984	CORE SIZE: A,Q,	SYSTEM OF MEASURE: IMPERIAL	SECTION:		
COMPLETED: March 6, 1984	DIP TESTS (CORRECTED): at 420' -42°45'	LOGGED BY: D. S. Hunt			
PURPOSE: TO CHECK MINERALIZATION ENCOUNTERED IN HOLE 157-2			DATE LOGGED: March 5-7, 1984		

FOOTAGE from	to	DESCRIPTION	SAMPLE				Au dwt/ton	Reassay Au dwt/ton	Cu %	Zn %		
			No.	from	to	Length						
0.0	87.2	<u>CASING IN OVERBURDEN</u>										
87.2	137.7	<u>INTERMEDIATE TUFFS</u> : Medium grey to medium to pale greenish, pinkish grey; moderately soft to hard; very fine to medium grained. Schistosity at 70° to core axis. A few thin intercalated mafic tuff beds. A few thin quartz and epidote stringers. Trace pyrite.										
		87.2-87.5: Brecciated, with epidote-quartz matrix A 0.1' quartz vein at 70°.	81460	87.2	87.5	0.3	N11					
		87.5-89.6: Brecciated, with epidote-quartz matrix	81461	87.5	89.6	2.1	N11					
		90.2-90.6: Bleached, with 20% epidote as stringers	81462	90.2	90.6	0.4	N11					
		98.6-99.2: Epidote-rich.	81463	98.6	99.2	0.6	N11					
		100.6-100.9: Hematite-rich, with 5% epidote.	81464	100.6	100.9	0.3	N11					
		109.3-109.8: A few thin epidote stringers parallel to schistosity. 2% disseminated pyrite.	81465	109.3	109.8	0.5	N11	N11				
		113.8-114.5: A 0.6' quartz-epidote vein at 75°.	81466	113.8	114.5	0.7	N11					
		126.0-126.8: Hematite- and epidote-rich.	81467	126.0	126.8	0.8	N11					

DOME EXPLORATION (CANADA) LIMITED
DIAMOND DRILL RECORD

HOLE NO:	157-22
PAGE NO:	2 of 3

FOOTAGE from	to	DESCRIPTION	SAMPLE				Au dwt/ton	Reassay Au dwt/ton	Cu %	Zn %		
			NO	from	to	Length						
137.7	420.0	QUARTZ-HORNBLLENDE-BIOTITE GNEISS AND SCHIST: Pale to dark grey; fine to very coarse grained; moderately soft to hard. Locally banded. Schistosity and gneissosity at 70°. Local pinkish coloured alteration. Local short sections are recognizable as mafic to intermediate volcanics. Locally weakly to strongly magnetic. A few thin epidote and quartz stringers. Trace pyrite.										
		149.1-149.5: A thin epidote-quartz stringer parallel to schistosity. 2% pyrite as thin stringers parallel to schistosity.	81468	149.1	149.5	0.4	N11					
		182.8-183.4: 3% pyrite as specks and stringers mainly parallel to schistosity.	81469	182.8	183.4	0.6	N11					
		184.0-185.6: 2% pyrite as flecks and thin stringers parallel to schistosity.	81470	184.0	185.6	1.6	N11					
		189.6-189.9: A thin quartz stringer at 50°.	81471	189.6	189.9	0.3	N11					
		234.4-236.2: 2% disseminated pyrite.	81472	234.4	236.2	1.8	N11					
		330.9-331.3: A thin quartz stringer at 70°.	81473	330.9	331.3	0.4	N11					
		334.7-335.3: Two quartz-calcite veins, to 0.15', at 60°.	81474	334.7	335.3	0.6	N11					
		337.3-338.2: Two thin quartz stringers at 65° and 70°.	81475	337.3	338.2	0.9	N11	N11				
		338.8-339.6: A 0.15' quartz vein at 45° to 85°. 2% combined pyrite and pyrrhorite as disseminated streaks.	81476	338.8	339.6	0.8	N11					

DOME EXPLORATION (CANADA) LIMITED

LOCATION: 68+00S, 192+00E. 925' South 690' West of No. 1 Post, P.524483	DIAMOND DRILL RECORD	HOLE No 157-23
AZIMUTH: 360°	PROPERTY: PROJECT 157, Sunday Lake, West of Sunday Lake Areas, Porcupine Mining Division, Ontario	
DIP: -47°	LENGTH: 400.0'	ELEVATION: CLAIM No: P.524483
STARTED: March 2, 1984	CORE SIZE: A.Q.	SYSTEM OF MEASURE: IMPERIAL SECTION:
COMPLETED: March 4, 1984	DIP TESTS (CORRECTED): At 400' -41°	LOGGED BY: D. S. Hunt
PURPOSE: TO TEST MAGNETIC ANOMALY AT 66+00S, 192+00E	DATE LOGGED: March 4, 1984	

FOOTAGE from to		DESCRIPTION	SAMPLE				Au dwt/ton	Ag	Cu %	Zn %		
			No.	from	to	Length						
0.0	80.6	CASING IN OVERBURDEN										
80.6	83.9	INTERMEDIATE TO FELSIC TUFF: Pale to medium grey; medium grained; hard. Schistosity at 60° to core axis. Trace pyrite.										
83.9	400.0	MAFIC TO INTERMEDIATE FLOWS AND TUFFS: Medium to dark green to medium pinkish grey; very fine to coarse grained; soft to moderately hard. Schistosity at 65°. A few thin intercalated intermediate to felsic tuff beds. Locally weakly magnetic from 346 to 372 feet. A few thin quartz and calcite stringers. Trace pyrite.										
		114.2-114.8: 2% disseminated pyrite.	81444	114.2	114.8	0.6	N11					
		128.4-129.5: Reddish pink intermediate to acid tuff with 20% epidote.	81445	128.4	129.5	1.1	N11					
		170.1-173.0: Granitic dyke. Upper contact at 50° lower at 30°.										
		197.1-197.6: 2% pyrite, mainly as irregular stringers.	81446	197.1	197.5	0.5	N11					

DOME EXPLORATION (CANADA) LIMITED
DIAMOND DRILL RECORD

HOLE No:	157-29
PAGE No:	2 of 5

FOOTAGE from	to	DESCRIPTION	SAMPLE				Au dwt/ton	Reassay Au dwt/ton	Cu %	Zn %	Average Au dwt/ton
			No	from	to	Length					
		120.2-120.9: A thin epidote-quartz stringer at 10°.	81415	120.2	120.9	0.7	N11				
		131.3: Lower contact at 50°.									
131.3	209.8	INTERMEDIATE TO FELSIC TUFFS: Similar to 48.5-116.4. Schistosity at 50°.									
		141.2-141.8: Mafic tuff with two thin epidote-rich stringers parallel to schistosity. 1% disseminated pyrite.	81416	141.2	141.8	0.6	N11				
		144.6-145.2: 3% disseminated pyrite.	81417	144.6	145.2	0.6	N11				
		175.5-175.7: 3% disseminated pyrite.	81418	175.5	175.7	0.2	N11	0.04		0.02	
		209.5-209.8: 6% pyrrhotite and 4% pyrite, disseminated.	81419	209.5	209.8	0.3	N11				
209.8	321.8	MAFIC TO INTERMEDIATE ASH AND LAPILLI TUFF AND MINOR AGGLOMERATE: With minor intercalated intermediate to felsic tuff beds. Medium greyish green or green; very fine to coarse grained; soft to moderately hard. Schistosity at 60°. Locally weakly magnetic. Rare thin quartz stringers. Trace pyrite.									
		211.2-211.8: Mafic and felsic ash tuff with a moderate number of thin quartz stringers, mainly parallel to schistosity. 2% pyrite.	81420	211.2	211.8	0.6	N11				
		214.5-215.0: 2% pyrite as thin streaks parallel to schistosity and as disseminated specks.	81421	214.5	215.0	0.5	N11				
		248.0-249.0: 5% pyrite as disseminated blebs.	81422	248.0	249.0	1.0	N11				

DOME EXPLORATION (CANADA) LIMITED
DIAMOND DRILL RECORD

HOLE No: 157-29

PAGE No: 3 of 5

FOOTAGE		DESCRIPTION	SAMPLE				Au dwt/ton	Ag	Cu %	Zn %		
from	to		NP	from	to	Length						
		249.5-250.8: A moderate number of thin quartz stringers at various angles. 1% pyrite.	81423	249.5	250.8	1.3	N11					
		251.0-252.1: 2% pyrite as disseminated blebs.	81424	251.0	252.1	1.1	N11					
		261.5-261.9: A 0.15' quartz vein at 60°.	81425	261.5	261.9	0.4	N11					
		274.2-276.5: 3% pyrite as disseminated blebs.	81426	274.2	276.5	2.3	N11					
		285.6-286.0: 5% disseminated pyrite.	81427	285.6	286.0	0.4	N11					
		303.2-303.7: A moderate number of thin quartz stringers at various angles. 1% pyrite.	81428	303.2	303.7	0.5	N11					
		306.9-307.5: A thin quartz stringer at 90°. 2% disseminated pyrite.	81429	306.9	307.5	0.6	N11					
		311.9-313.1: 2% disseminated pyrite.	81430	311.9	313.1	1.2	N11					
		321.8: Lower contact at 20°.										
321.8	501.0	INTERMEDIATE TO FELSIC TUFF AND AGGLOMERATE: Similar to 48.5-116.4. Locally weakly magnetic. Moderately soft to moderately hard.										
		321.8-322.4: A thin quartz stringer sub-parallel to core axis with 5% associated pyrite.	81431	321.8	322.4	0.6	N11					
		362.6-363.8: Mafic to intermediate tuff with 2% disseminated pyrite.	81432	362.6	363.8	1.2	N11					
		375.3-376.1: 2% disseminated pyrite.	81433	375.3	376.1	0.8	N11					
		390.7-391.0: A 0.15' quartz-hematite vein at 50°.	81434	390.7	391.0	0.3	N11					

DOME EXPLORATION (CANADA) LIMITED

LOCATION: 82+15S, 196+00E. 1,010' South, 660' West of No. 1 Post, P.524482 AZIMUTH: 001°T	DIAMOND DRILL RECORD	HOLE No 157-30
DIP: -46° LENGTH: 500.0' ELEVATION:		PROPERTY: PROJECT 157, Sunday Lake and West of Sunday Lake Areas, Porcupine Mining Division, Ont. CLAIM No: P.524482
STARTED: February 21, 1984	CORE SIZE: A.Q. SYSTEM OF MEASURE: IMPERIAL	SECTION:
COMPLETED: February 22, 1984	DIP TESTS (CORRECTED): At 500' -40°	LOGGED BY: D. S. Hunt
PURPOSE: Cross-Section	DATE LOGGED: February 22 and 29, 1984	

FOOTAGE from	to	DESCRIPTION	SAMPLE				Au dwt/ton	Ag	Cu %	Zn %		
			No.	from	to	Length						
0.0	36.0	CASING IN OVERBURDEN										
36.0	51.0	INTERMEDIATE TO FELSIC TUFFS: With intercalated mafic to intermediate tuff beds. Medium grey; fine to medium grained; moderately hard to hard. Schistosity at 60° to core axis.										
		51.0: Lower contact at 65°.										
51.0	287.6	MAFIC TO INTERMEDIATE ASH AND CRYSTAL TUFFS AND FLOWS: With a few intercalated intermediate to felsic tuff beds. Medium grey to greenish grey; very fine to fine grained; moderately soft to moderately hard. Schistosity at 70°. Locally weakly to moderately magnetic. Trace pyrite.										
		62.4-63.2: Two quartz veins, to 0.1', at various angles. Trace pyrite.	81371	62.4	63.2	0.8	N11					
		76.0-77.2: 2% disseminated pyrite.	81372	76.0	77.2	1.2	N11					
		93.2-93.7: Intermediate to acid tuff with a 0.1' quartz vein at 50°.	81373	93.2	93.7	0.5	N11					
		95.2-98.5: A few thin intermediate to felsic tuff beds. A few thin quartz-epidote stringers at various angles. 1% disseminated pyrite.	81374	95.2	98.5	3.3	N11					

DOME EXPLORATION (CANADA) LIMITED
DIAMOND DRILL RECORD

HOLE No: 157-30

PAGE No: 2 of 5

FOOTAGE from	to	DESCRIPTION	SAMPLE				Au dwt/ton	Reassay Au dwt/ton	Cu %	Zn %		
			Nº	from	to	Length						
		99.4-101.9: A few thin intermediate to felsic tuff beds. A few thin quartz-epidote stringers at various angles. 1% disseminated pyrite.	81375	99.4	101.9	2.5	N11					
		102.6-103.2: A few hairline epidote stringers, mainly parallel to schistosity. 1% disseminated pyrite.	81376	102.6	103.2	0.6	N11					
		106.7-107.6: A few thin intermediate to felsic tuff beds. 1% pyrite.	81377	106.7	107.6	0.9	N11					
		116.0-116.8: 3% pyrite, disseminated and as thin streaks parallel to schistosity.	81378	116.0	116.8	0.8	0.04	0.04				
		119.3-120.2: A moderate number of thin intermediate to felsic tuff beds. 2% disseminated pyrite.	81379	119.3	120.2	0.9	N11					
		151.4-151.9: A thin epidote stringer, at 40°, with 1% pyrite.	81380	151.4	151.9	0.5	N11					
		158.8-160.3: A few thin epidote stringers at various angles. 1% disseminated pyrite.	81381	158.8	160.3	1.5	N11					
		176.2-177.9: 1% disseminated pyrite.	81382	176.2	177.9	1.7	N11					
		193.9-195.9: 2% pyrite, mainly as thin stringers at low angles to core axis.	81383	193.9	195.9	2.0	N11					
		196.7-197.2: A moderate number of thin chloritic or epidote-rich stringers at various angles. 2% pyrite.	81384	196.7	197.2	0.5	N11					
		198.9-200.9: A few thin quartz stringers at various angles. 1% pyrite.	81385	198.9	200.9	2.0	N11					

DOME EXPLORATION (CANADA) LIMITED
DIAMOND DRILL RECORD

HOLE No: 157-30

PAGE No: 3 of 5

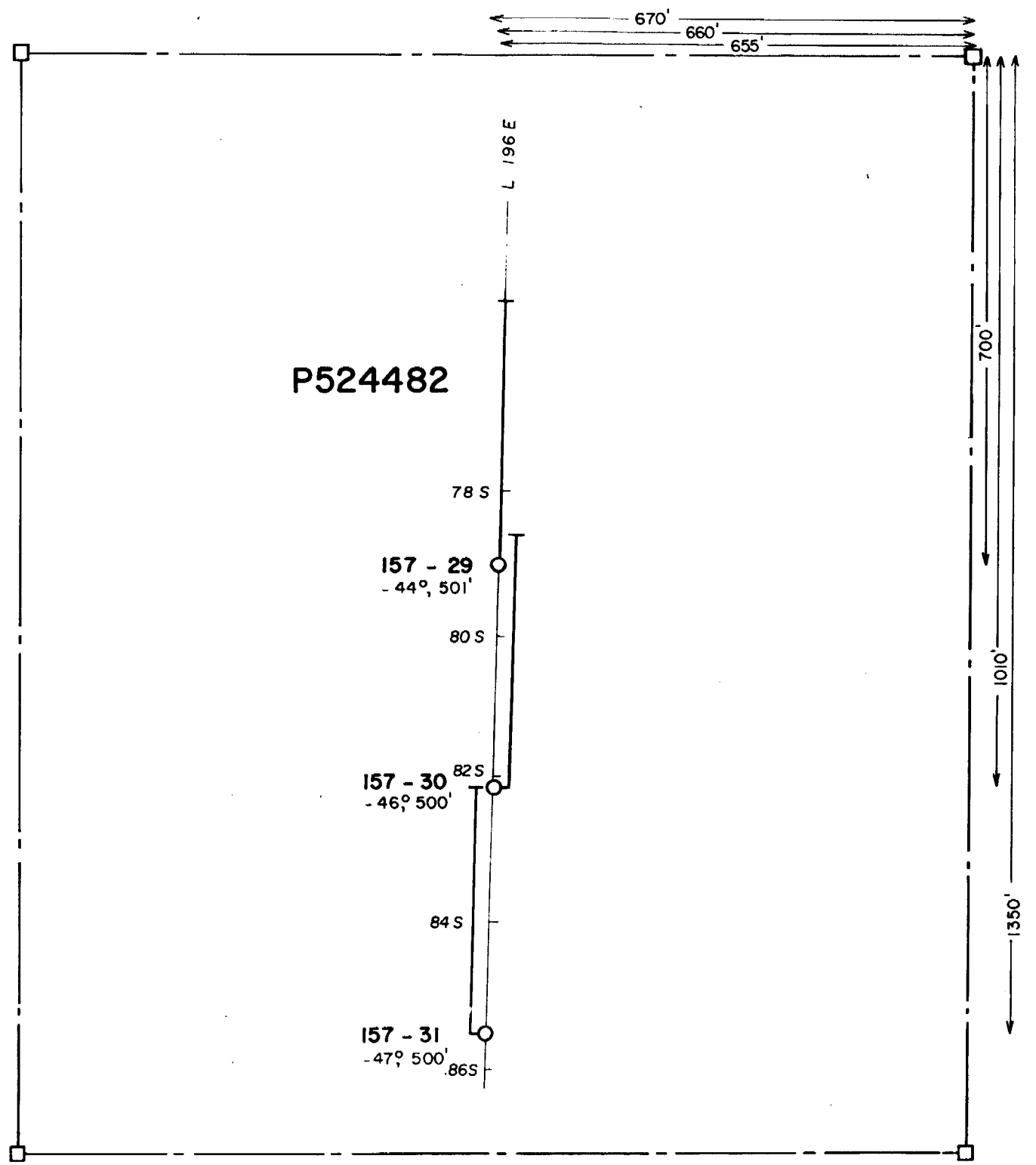
FOOTAGE		DESCRIPTION	SAMPLE				Au dwt/ton	Reassay Au dwt/ton	Cu %	Zn %		
from	to		N ^o	from	to	Length						
		205.6-206.9: A few thin quartz and epidote stringers at various angles. 2% pyrite.	81386	205.6	206.9	1.3	N11					
		216.7-218.4: 1% disseminated pyrite.	81387	216.7	218.4	1.7	N11					
		230.4-231.3: 2% disseminated pyrite.	81388	230.4	231.3	0.9	N11	N11				
		231.7-233.0: 2% disseminated pyrite.	81389	231.7	233.0	1.3	N11					
		259.8-262.7: 2% disseminated pyrite.	81390	259.8	262.7	2.9	N11					
		266.0-267.0: 3% disseminated pyrite.	81391	266.0	267.0	1.0	N11					
		272.2-272.9: 5% disseminated pyrite.	81392	272.0	272.9	0.7	N11					
		272.9-273.3: A 0.15' quartz vein at 55°.	81393	272.9	273.3	0.4	N11					
		287.6: Lower contact at 65°.										
287.6	500.0	INTERMEDIATE TO FELSIC ASH AND LAPILLI TUFFS: Similar to 36.0-51.0. Colour varies locally to medium greyish pink. Locally weakly magnetic. Schistosity at 60°.										
		306.6-307.3: Thinly laminated mafic to intermediate tuff with 2% disseminated pyrite.	81394	306.6	307.3	0.7	N11					
		312.3-312.9: A thin quartz stringer at 75°.	81395	312.3	312.9	0.6	N11					
		319.3-319.7: A thin quartz stringer at 55°.	81396	319.3	319.7	0.4	N11					
		340.0-340.5: A moderate number of thin quartz stringers parallel to schistosity. 4% pyrite.	81397	340.0	340.5	0.5	N11					

DOME EXPLORATION (CANADA) LIMITED
DIAMOND DRILL RECORD

HOLE No: 157-31

PAGE No: 3 of 4

FOOTAGE from	to	DESCRIPTION	SAMPLE				Au dwt/ton	Reassay Au dwt/ton	Cu %	Zn %	Average Au dwt/ton
			NP	from	to	Length					
		308.7-309.2: Weakly epidote-enriched, 1% disseminated pyrite.	81360	308.7	309.2	0.5	0.04	N11			0.02
320.6	401.6	<u>MAFIC TO INTERMEDIATE ASH AND CRYSTAL TUFFS AND FLOWS:</u> Similar to 28.4-79.0. A few thin intermediate to acid tuff beds. Schistosity at 60°.									
		338.5-341.0: 5% pyrrhotite as disseminated blebs.	81361	338.5	341.0	2.5	N11				
		342.3-344.0: 1% disseminated pyrite.	81362	342.3	344.0	1.7	N11				
		368.6-369.1: 3% disseminated pyrite.	81363	368.6	369.1	0.8	N11				
		381.4-384.3: 1% disseminated pyrite.	81364	381.4	384.3	2.9	N11				
		392.2-394.8: 1% disseminated pyrite.	81365	392.2	394.8	2.6	N11				
		397.0-401.3: 1% disseminated pyrite.	81366	397.0	401.3	4.3	N11				
		401.6: Lower contact at 75°.									
401.6	490.2	<u>INTERMEDIATE TO FELSIC TUFF:</u> Similar to 79.0-237.5. Schistosity at 75°.									
		433.6-434.0: A 0.1' granitic stringer at 50° containing 5% disseminated pyrite.	81367	433.6	434.0	0.4	N11				
		434.6: A chalcopyrite bleb.									
		448.0-449.6: Weakly epidotized, with 1% disseminated pyrite.	81368	448.0	449.6	1.6	N11				
		452.6-453.1: A 0.15' epidote stringer at 20° with 1% pyrite.	81369	452.6	453.1	0.5	N11				



P524482

157 - 29
- 44° 50'

157 - 30
- 46° 50'

157 - 31
- 47° 50'

L 196 E

78 S

80 S

82 S

84 S

.86 S

670'
660'
655'

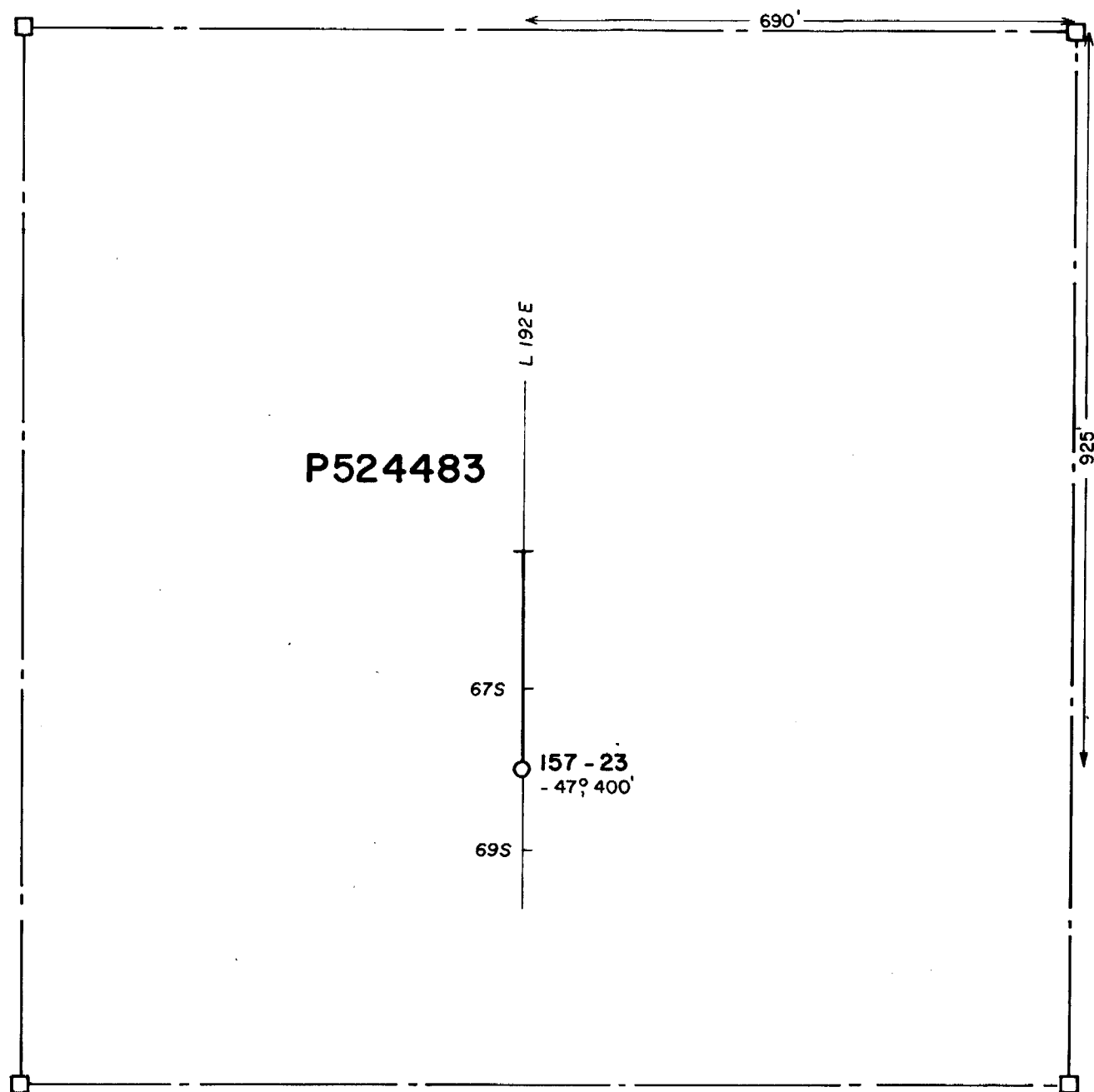
700'

1010'

1350'

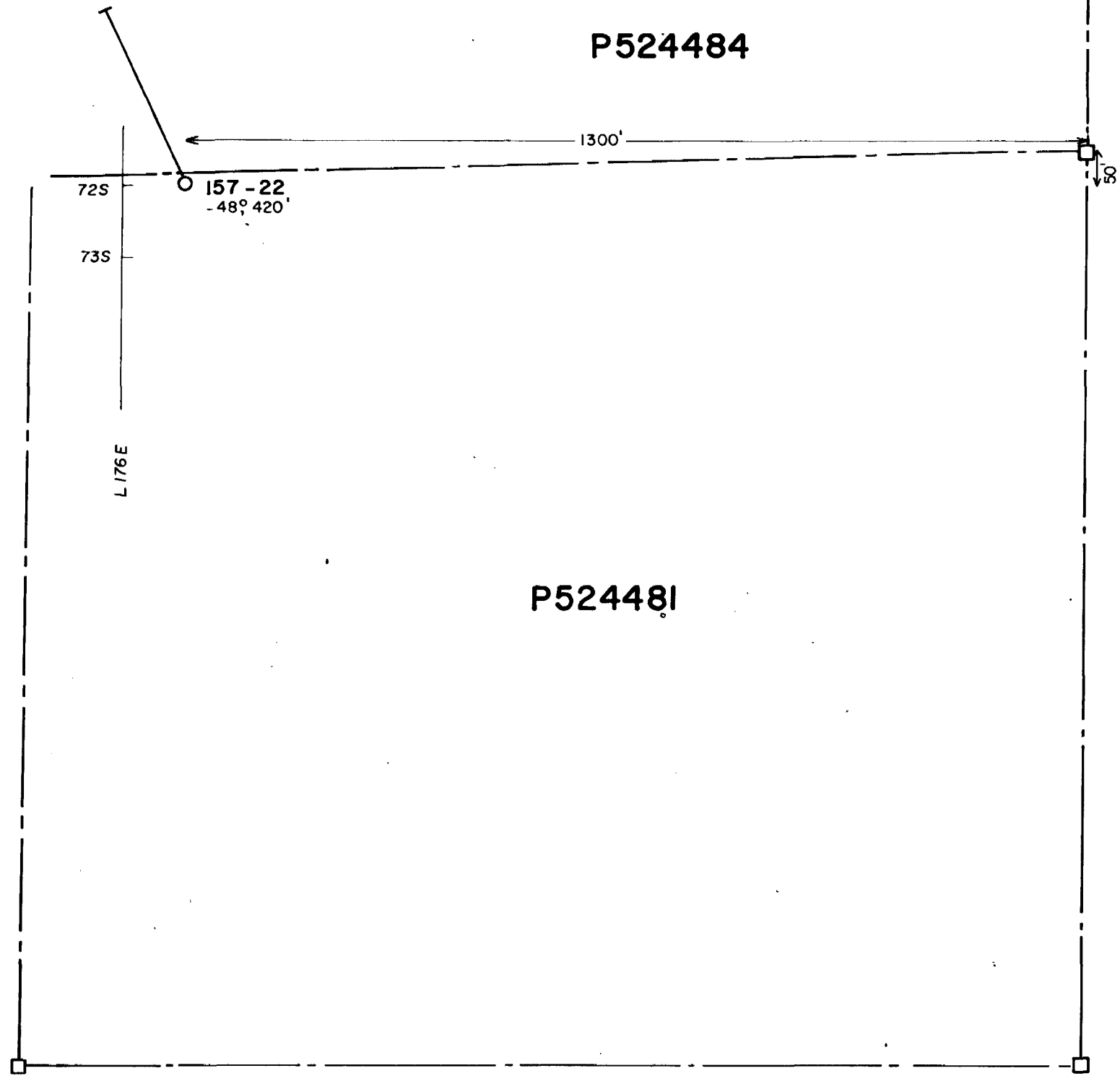


DOME EXPLORATION (CANADA) LTD.				
PROJ. 157 WEST SUNDAY LAKE, ONTARIO				
DDH LOCATIONS				
SCALE	DATE	BY	N.T.S. No:	DWG. No:
1" = 200'	MAR. 1984	T.S.	32-L-4	157-45



DOME EXPLORATION (CANADA) LTD.				
PROJ. 157 WEST SUNDAY LAKE, ONTARIO				
DDH LOCATIONS				
SCALE	DATE	BY	N.T.S. No.	DWG. No.
1" = 200'	MAR. 1984	T.S.	32-L-4	157-40

P524484



P524484



DOME EXPLORATION (CANADA) LTD.				
PROJ. 157 WEST SUNDAY LAKE, ONTARIO				
DDH LOCATIONS				
SCALE	DATE	BY	N.T.S. No.	DWG. No.
1" = 200'	MAR. 1984	T.S.	32-L-4	157-39



Ministry of
Natural
Resources

Ontario

Sunday Lake
Report
of Work
PROJ. #157
#154/84 #



32L04SE9428 18 SUNDAY LAKE

900

Name and Address of Recorded Holder
DOME EXPLORATION (CANADA) LIMITED A.21304
 Box 270, 1 First Canadian Place, Toronto, Ontario M5X 1H1

Summary of Work Performance and Distribution of Credits

Total Work Days Cr. claimed 7,406	Mining Claim			Work Days Cr.			Mining Claim			Work Days Cr.		
	Prefix	Number	Work Days Cr.	Prefix	Number	Work Days Cr.	Prefix	Number	Work Days Cr.	Prefix	Number	Work Days Cr.
for Performance of the following work. (Check one only)	SEE ATTACHED SCHEDULE											
<input type="checkbox"/> Manual Work												
<input type="checkbox"/> Shaft Sinking Drifting or other Lateral Work.												
<input type="checkbox"/> Compressed Air, other Power driven or mechanical equip.												
<input type="checkbox"/> Power Stripping												
<input checked="" type="checkbox"/> Diamond or other Core drilling												
<input type="checkbox"/> Land Survey												

ONTARIO GEOLOGICAL SURVEY
ASSESSMENT FILE
MINING DIVISION
- APR 20 1984

All the work was performed on Mining Claim(s): **SEE ATTACHED**

Required Information eg: type of equipment, Names, Addresses, etc. (See Table Below)

Hole No.	Length (ft)	Dates (1984)	
157-16	600	Feb. 2-5	All Core is A.Q.
157-17	298	Feb. 5-7	
157-18	300	Feb. 7-9	
157-19	292	Jan. 31-Feb. 2	Drilling by Bradley Bros. Drilling Ltd. Noranda, Quebec
157-20	312	Jan. 29-31	
157-21	300	Jan. 27-29	
157-22	420	Mar. 4-6	
157-23	400	Mar. 2-4	
157-24	392	Mar. 7-8	
157-25	540	Mar. 9-11	
157-26	407	Mar. 6-8	
157-27	598	Feb. 10-14	
157-28	594	Feb. 14-18	
157-29	501	Feb. 29-Mar. 2	
157-30	500	Feb. 21-22	
157-31	500	Feb. 19-21	
157-32	452	Mar. 4-5	
TOTAL	7,406 ft		

RECORDED
APR 09 1984

PORCUPINE MINING DIVISION
RECEIVED
APR 09 1984
A.M. P.M.

Date of Report: April 5, 1984
 Signature: *B. G. Sigulata*

Certification Verifying Report of Work
 I hereby certify that I have a personal and intimate knowledge of the facts set forth in the Report of Work annexed hereto, having performed the work or witnessed same during and/or after its completion and the annexed report is true.

Name and Postal Address of Person Certifying
L. B. Halladay, Box 270, 1 First Canadian Place, Toronto, Ontario M5X 1H1
 Date Certified: April 5, 1984
 Certified by (Signature): *L. B. Halladay*

Table of Information/Attachments Required by the Mining Recorder

Type of Work	Specific information per type	Other information (Common to 2 or more types)	Attachments
Manual Work	Nil	Names and addresses of men who performed manual work/operated equipment, together with dates and hours of employment.	Work Sketch: these are required to show the location and extent of work in relation to the nearest claim post.
Shaft Sinking, Drifting or other Lateral Work			
Compressed air, other power driven or mechanical equip.	Type of equipment	Names and addresses of owner or operator together with dates when drilling/stripping done.	Work Sketch (as above) in duplicate
Power Stripping	Type of equipment and amount expended. Note: Proof of actual cost must be submitted within 30 days of recording.		
Diamond or other core drilling	Signed core log showing; footage, diameter of core, number and angles of holes.	Nil	Nil
Land Survey	Name and address of Ontario land surveyor.		

PROJECT 157

SCHEDULE OF CLAIMS

<u>Claim No.</u>	<u>Work Days Cr.</u>	<u>Claim No.</u>	<u>Work Days Cr.</u>	<u>Claim No.</u>	<u>Work Days Cr.</u>
P.524374	100	P.524478	100	P.524506	100
P.524375	100	P.524479	100	P.524507	100
P.524376	100	P.524480	100	P.524508	100
P.524377	100	P.524481	100		
P.524378	100	P.524482	100	P.524514	100
P.524379	100	P.524483	100	P.524515	100
P.524380	100	P.524484	100		
P.524381	100	P.524485	100	P.524524	100
		P.524486	100	P.524525	100
P.524404	100	P.524487	100	P.524526	100
P.524405	100	P.524488	100	P.524527	100
P.524406	100	P.524489	100	P.524528	100
P.524407	100	P.524490	64	P.524529	100
P.524408	100	P.524491	100	P.524530	100
P.524409	100	P.524492	100	P.524531	100
P.524410	100	P.524493	100		
P.524411	100	P.524494	100	P.524553	100
P.524412	100	P.524495	100	P.524554	100
P.524413	100	P.524496	100	P.524555	42
P.524414	100	P.524497	100		
P.524415	100	P.524498	100	P.524604	100
P.524416	100	P.524499	100	P.524605	100
P.524417	100	P.524500	100	P.524606	100
		P.524501	100	P.524607	100
P.524430	100	P.524502	100	P.524608	100
P.524431	100	P.524503	100		
P.524432	100	P.524504	100		
P.524433	100	P.524505	100		

26

20

5

21

21

All work was performed on Mining Claims: P.524376, P.524379, P.524407, P.524481, P.524482, P.524483, P.524484, P.524489, P.524490, P.524497, P.524511, P.524606

RECORDED

APR 09 1984

Receipt No. 30

PORCUPINE MINING DIVISION

RECEIVED

APR 09 1984

A.M. P.M.

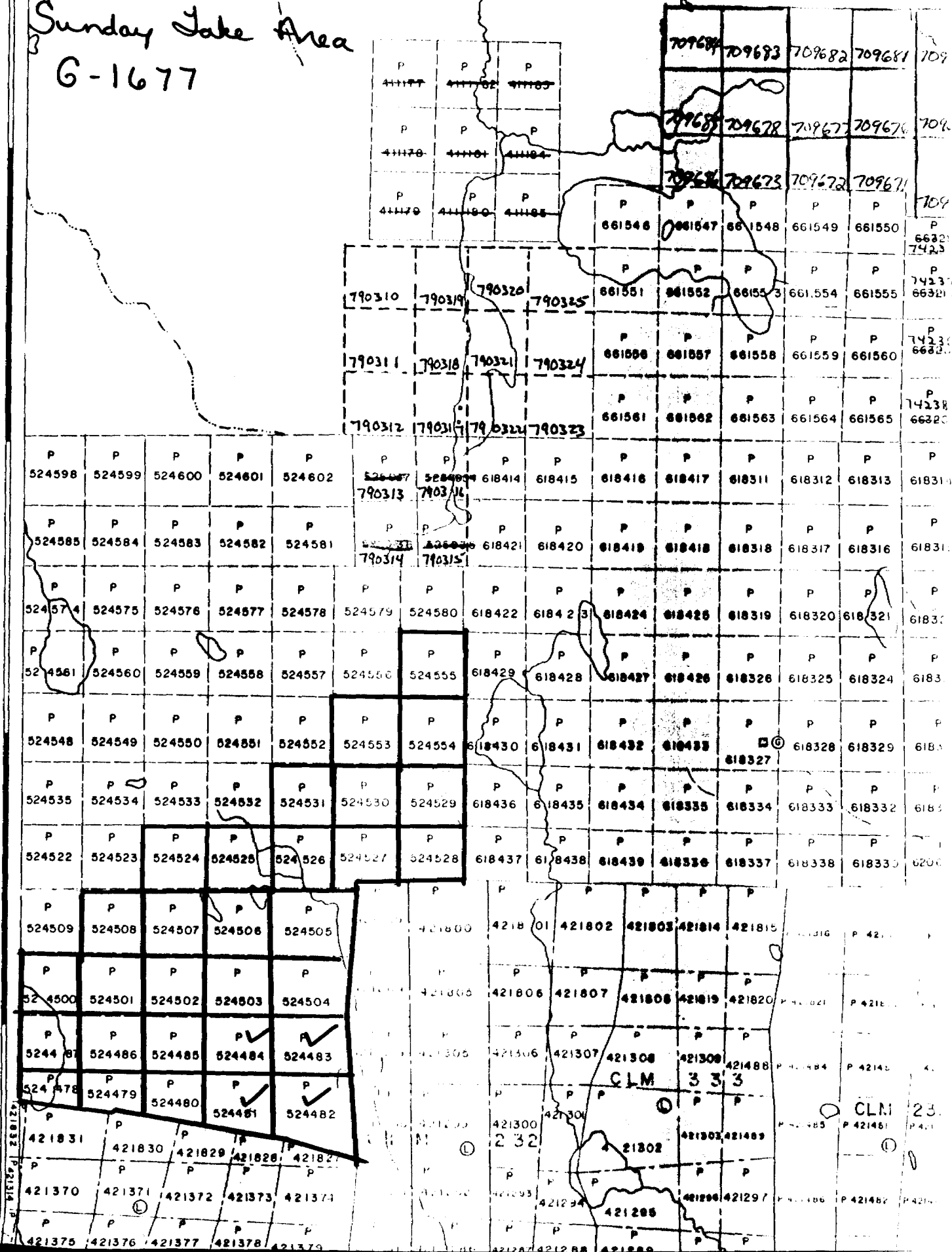
7 8 9 10 11 12 1 2 3 4 5 6

E.C.P.

Sunday Lake Area

G-1677

WEST OF SUNDAY LAKE G-1680



CLM 3 3 3
CLM 23