



41H13SE9413 IR NO 26 10B1 MANITOULIN ISLAND

010

MANITOULIN ISLAND INDIAN RESERVE

No. 26

OIL AND GAS WELL

LOGS

SSM-1810

YEAR 1963

CONCESSION

LOT

TOWNSHIP INDIAN RESERVE

MANITOULIN

COUNTY MANITOULIN  
WELL NAME

CLASS:	FIELD:	FINAL STATUS:
COUNTY: Manitoulin	TOWNSHIP: Indian Reserve	LOT: CONC:
WELL NAME: MANITOULIN	INDIAN RESERVE	
OPERATOR:	TOTAL DEPTH: 300' 300'	
DRILLER:	ELEVATION: 656' 656'	
GEOLOGIST:	CO ORDINATES: Cape Smith CAPE SMITH	
GEOLOGICAL FORMATIONS		THICK.
DRIFT	0.2	(15)'
PORT LAMBTON		
KETTLE POINT		
HAMILTON		
DUNDEE		
COLUMBUS		
DETROIT RIVER		
SYLVANIA		
BOIS BLANC		
ORISKANY		
BASS ISLAND		
SALINA		
UPPER SALT BEDS		
"C" UNIT	SHALE	
"B" UNIT	SALT	
"A-2" UNIT	ANHYDRITE	
	CARBONATE	
	SALT	
	ANHYDRITE	
"A-1" UNIT	CARBONATE	
	EVAPORITE	
GUELPH — LOCKPORT		
CLINTON	ROCHESTER	
	IRONDEQUOIT	
	REYNALES	
	THOROLD	
CATARACT	GRIMSBY	
	CABOT HEAD	
	MANITOULIN	
	WHIRLPOOL	
QUEENSTON		
MEAFORD — DUNDAS		
COLLINGWOOD		
TRENTON	COBOURG	
	SHERMAN FALL	
	KIRKFIELD	
BLACK RIVER	COROCONK	
	GULL RIVER	
	SHADOW LAKE	
CAMBRIAN		
PRECAMBRIAN		
TOTAL DEPTH (SAMPLES)	300	300
TREATMENT		FINAL RESULTS
		OIL
		GAS
		PRESSURE

CO ORDINATES: Cape Smith CAPE SMITH

IAT.

LONG.

SPUDED:

COMPLETED: 1863 1863

ABANDONED:

SAMPLES IN OTTAWA / TRAY No.:

WATER RECORD			
DEPTH	TYPE	LEVEL FROM SURF.	FLOW

CASING AND TUBING RECORD				
SIZE	WEIGHT	SET A	HOW SET	AMT. RECOVERED

INITIAL GAS RECORD			
INTERVAL	NET PAY	NATURAL FLOW	S.P.

INITIAL OIL RECORD			
INTERVAL	NET PAY	NATURAL FLOW	API

LOGGING RECORD		
INTERVAL	TYPE	LOG T.D.

CORING RECORD			
No.	INTERVAL	No.	INTERVAL









**OIL PRODUCER - WELL ABANDONED**

CLASS: **INDIAN RESERVE** FINAL STATUS: **Oil Producer - Well Abandoned**  
 COUNTY: **Manitoulin** TOWNSHIP: **Indian Reserve** LOT: **CONG. 1**  
 WELL NAME: **Great Northern Oil & Gas Company No. 3 (7)**  
 OPERATOR: **Great Northern Oil & Gas Company** TOTAL DEPTH: **150' 450'**  
 DRILLER: **G. F. Gregory** ELEVATION:  
 GEOLOGIST: **Drillers Log** CO-ORDINATES:

YEAR 1904

GEOLOGICAL FORMATIONS	TOP	ELEV.	THICK
Surface	0	5	5
Limestone	5	55	55
Gray Shale	60	260	260
Light Shale	320	77	77
Black Shale	397	20	20
Trenton	417	33	33

LAT.  
 LONG.  
 SPUDDED: **September 21, 1904**  
 COMPLETED: **October 7, 1904**  
 ABANDONED:

WATER RECORD				
DEPTH	TYPE	LEVEL FT	SUFF.	FLOW
150'	Salt			
450'	SALT			

CASING AND TUBING RECORD				
SIZE	WEIGHT	SET AT	HOW SET	AMT. RECOVERED

INITIAL GAS RECORD			
INTERVAL	NET PAY	NATURAL FLOW	S.I.P.
127' - 150'		Show	
417' - 450'			

INITIAL OIL RECORD			
INTERVAL	NET PAY	NATURAL FLOW	PAPI
127' - 150'		Flowing Well	
417' - 450'		Production rate not recorded	
		Pumped at 15 Bbls./D.	

LOGGING RECORD		
INTERVAL	TYPE	LOG Y.D.

CORING RECORD			
No.	INTERVAL	No.	INTERVAL

TOTAL DEPTH (SAMPLES) **450**

CONCESSION

LOT

TOWNSHIP INDIAN RESERVE  
 Great Northern Oil & Gas Company No. 3

COUNTY MANITOULIN  
 Great Northern Oil & Gas Company No. 3

TREATMENT	FINAL RESULTS						
Salt Water came in from bottom but upon continued pumping (1 hr.) Oil & Gas came in & then flowed (total 2000 Bbls.) Pumping resulted in an additional 1000 Bbls.	<table border="1"> <tr> <td>OIL <b>Approximately 3000 Bbls.</b></td> <td>Approximately 3000 Bbls.</td> </tr> <tr> <td>GAS <b>Show</b></td> <td>Show</td> </tr> <tr> <td>PRESSURE</td> <td></td> </tr> </table>	OIL <b>Approximately 3000 Bbls.</b>	Approximately 3000 Bbls.	GAS <b>Show</b>	Show	PRESSURE	
OIL <b>Approximately 3000 Bbls.</b>	Approximately 3000 Bbls.						
GAS <b>Show</b>	Show						
PRESSURE							

CLASS: FIELD: FINAL STATUS:  
 COUNTY: Manitoulin TOWNSHIP: Indian Reserve LOT: CONC.:  
 WELL NAME: Great Northern Oil & Gas Company No. 7 GREAT N. OIL & GAS CO. NO. 7  
 OPERATOR: Great Northern Oil & Gas Company TOTAL DEPTH: 1981 498'  
 WELLER: G. F. Gregory ELEVATION:  
 LOGIST: Drillers Log CO-ORDINATES:

GEOLOGICAL FORMATIONS	TOP	ELEV.	THICK.
Limestone <i>LIMESTONE</i>	0	0	50 50
Gray Shale <i>GRAY SHALE</i>	50	50	45 45
Lime <i>LIME</i>	95	95	15 35
Streaks of soap & lime	110	110	60 60
Gray Shale	170	170	50 150
Hard Shale	320	320	50 50
Black Shale	370	370	45 45
Trenton Lime	435	435	83 83

LAT. / LONG.  
 SPUDDED: October 22, 1904 *Oct. 22, 1904*  
 COMPLETED: November 9, 1904 *Nov 9, 1904*  
 ABANDONED:

SAMPLES IN OTTAWA: TRAY No.:

WATER RECORD			
DEPTH	TYPE	LEVEL FROM SURF.	FLOW
60' 60	Fresh FRESH		

CASING AND TUBING RECORD				
SIZE	WEIGHT	SET AT	HOW SET	AMT. RECOVERE

INITIAL GAS RECORD			
INTERVAL	NET PAY	NATURAL FLOW	S.I.P.
165'		SHOW	

INITIAL OIL RECORD			
INTERVAL	NET PAY	NATURAL FLOW	*API

LOGGING RECORD		
INTERVAL	TYPE	LOG T.D.

CORING RECORD			
No.	INTERVAL	No.	INTERVAL

TOTAL DEPTH (SAMPLES) 498  
 498

TREATMENT		FINAL RESULTS	
NIL	NIL	OIL	NIL NIL
		GAS	SHOW SHOW
		PRESSURE	

CONCESSION

LOT

COUNTY: MANITOULIN TOWNSHIP: INDIAN RESERVE  
 GREAT NORTHERN OIL & GAS COMPANY NO. 7



CLASS: MANITOULIN FIELD: Gas Show - Well Abandoned  
COUNTY: Manitowlin TOWNSHIP: Indian Reserve LOT:  CONC:   
WELL NAME: Great Northern Oil & Gas Company No. 1  
OPERATOR: Great Northern Oil & Gas Company TOTAL DEPTH: 520' 520' 520'  
ELEVATION: 736' 736'  
LOC: Drillers log CO-ORDINATES:

GEOLOGICAL FORMATIONS	TOP	ELEV.	THICK.
Liimestone	0	736 736	50 59
Light Shale	50	686 686	250 250
Gray Shale	300	436 436	62 62
Black Shale	362	374 374	21 2
Liimestone	383	353 353	137 137

SPUDDED:  COMPLETED: 1905 1905  
ABANDONED:   
SAMPLES IN OTTAWA:  TRAY No.:

Trenton	383	353	
	383	353	

DEPTH	TYPE	LEVEL FROM SURF.	FLOW

SIZE	WEIGHT	SET AT	HOW SET	AMT. RECOVERED

INTERVAL	NET PAY	NATURAL FLOW	S.P.P.
398'			

INTERVAL	NET PAY	NATURAL FLOW	*API

INTERVAL	TYPE	LOG T.D.

No.	INTERVAL	No.	INTERVAL

TOTAL DEPTH (SAMPLES) 520 216  
520 216

TREATMENT	FINAL RESULTS
<u>NI</u> <u>NIL</u>	<u>Oil</u> <u>Nil</u>
	<u>GAS</u> <u>Show Show</u>
	<u>PRESSURE</u> <u></u>

YEAR

CONCESSION

LOT

INDIAN RESERVE

MANITOULIN TOWNSHIP

Great Northern Oil & Gas Company No.

1905

CONCESSION

LOT

INDIAN RESERVE

TOWNSHIP

MANTOULIN

WILSON

OIL SHOW - WELL ABANDONED

CLASS: FIELD: FINAL STATUS: Oil Show - Well Abandoned  
 COUNTY: Manitoulin TOWNSHIP: Indian Reserve LOT: CONC.:  
 WELL NAME: Great Northern Oil & Gas Company No. 5  
 OPERATOR: Great Northern Oil & Gas Company TOTAL DEPTH: 437' + 437'  
 DRILLER: ELEVATION: 736' 736'

GEOLOGICAL FORMATIONS

FORMATION	TOP	ELEV.	THICK.
Sand SAND	0	0	14 2 1/2
Limestone LIMESTONE	14	14	52 50
Light Shale L. SHALE	64	64	252 250
Dark Shale D. SHALE	314	314	94 9 1/2
Black Shale BLACK SHALE	408	408	12 12

CO-ORDINATES:  
 LAT.  
 LONG.  
 SPUDDED:  
 COMPLETED: 1905  
 ABANDONED:  
 SAMPLES IN OTTAWA: TRAY No.:

WATER RECORD

DEPTH	TYPE	LEVEL FROM SURF.	FLOW

CASING AND TUBING RECORD

SIZE	WEIGHT	SET AT	HOW SET	AMT. RECOVER

INITIAL GAS RECORD

INTERVAL	NET PAY	NATURAL FLOW	S.P.

INITIAL OIL RECORD

INTERVAL	NET PAY	NATURAL FLOW	*API
437' 437'			

LOGGING RECORD

INTERVAL	TYPE	LOG T.D.

CORING RECORD

No.	INTERVAL	No.	INTERVAL

TOTAL DEPTH (SAMPLES) 420 420

TREATMENT

TREATMENT	FINAL RESULTS
	OIL Show SHOW
	GAS Nil Nil
	PRESSURE

OIL & GAS SHOW (2)

YEAR: 1905

CONCESSION:

LOT:

INDIAN RESERVE

TOWNSHIP:

MANITOULIN

Great Northern Oil & Gas Company No. 2

CLASS: FIELD: FINAL STATUS: Oil & Gas Show (?)  
 COUNTY: Manitoulin TOWNSHIP: Indian Reserve LOT: CONC.:  
 WELL NAME: Great Northern Oil & Gas Company No. 2  
 OPERATOR: Great Northern Oil & Gas Company TOTAL DEPTH: 1027' 409'  
 DRILLER: GREAT NORTHERN OIL & GAS CO. ELEVATION: 736' 736'  
 GEOLOGIST: Drillers Log CO-ORDINATES:

GEOLOGICAL FORMATIONS	TOP	FEET	THICK.
Surface SURFACE	0	0	34 34
Limestone & Shale	34	34	90 90
Light Shale	124	124	181 161
Gray Shale	285	285	65 65
Black Shale	350	350	9 9
Limestone	359	359	50 50

0.2 Miles S. E. of 0.2 MILES  
 Wikwenikong S.E. OF  
 WIKWENIKONG  
 LAY. LONG.  
 SPUDDED:  
 COMPLETED: 1906 1906  
 ABANDONED:

SAMPLES IN OTTAWA: TRAY No.:

WATER RECORD			
DEPTH	TYPE	LEVEL FROM SURF.	FLOW

CASING AND TUBING RECORD				
SIZE	WEIGHT	SET AT	HOW SET	AMT. RECYCLE

INITIAL GAS RECORD			
INTERVAL	NET PAY	NATURAL FLOW	S.P.
380'			

INITIAL OIL RECORD			
INTERVAL	NET PAY	NATURAL FLOW	% API
380'			

LOGGING RECORD		
INTERVAL	TYPE	LOG T.D.

CORING RECORD			
No.	INTERVAL	No.	INTERVAL

TREATMENT	FINAL RESULTS
	OIL Not Recorded NOT RECORDED
	GAS Not Recorded NOT RECORDED
	PRESSURE

TOTAL DEPTH (SAMPLES) 409' 409'

OIL PRODUCER - WELL ABANDONED

CLASS: FIELD: FINAL STATUS: Oil Producer - Well Abandoned  
 COUNTY: Manitowlin TOWNSHIP: Indian Reserve LOT: CONC:  
 WELL NAME: Great Northern Oil & Gas Company No. 4  
 OPERATOR: Great Northern Oil & Gas Company TOTAL DEPTH: 450' 450'  
 DRILLER: DRILLER: ELEVATION: 736' 736'  
 GEOLOGIST: Drillers Log CO-ORDINATES:

GEOLOGICAL FORMATIONS	TOP	ELV.	THICK.
SAND SAND	0	0	15 15
Limestone LIMESTONE	15	15	50 50
Light Shale L. SHALE	65	65	250 250
Dark Shale D. SHALE	315	315	70 70
Black Shale BLACK SHALE	385	385	22 22
Limestone LIMESTONE	407	407	?

LAT.  
 LONG.  
 SPUDDED:  
 COMPLETED: 1906  
 ABANDONED:  
 SAMPLES IN OTTAWA: TRAY No.:

WATER RECORD			
DEPTH	TYPE	LEVEL FROM SURF.	FLOW
438'	Salt		

CASING AND TUBING RECORD				
SIZE	WEIGHT	SET AT	HOW SET	AMT. RECOVERED

INITIAL GAS RECORD			
INTERVAL	NET PAY	NATURAL FLOW	S.I.P.

INITIAL OIL RECORD			
INTERVAL	NET PAY	NATURAL FLOW	*API

LOGGING RECORD		
INTERVAL	TYPE	LOG T.D.

CORING RECORD			
No.	INTERVAL	No.	INTERVAL

TOTAL DEPTH (SAMPLES): 407  
 TREATMENT:

FINAL RESULTS	
OIL	Not Recorded
GAS	? ?
PRESSURE	

YEAR: 1905

CONCESSION

LOT:

TOWNSHIP: INDIAN RESERVE

COUNTY: MANITOWLIN

Great Northern Oil & Gas Company No. 4





















DRY HOLE - WELL ABANDONED

CLASS: FIELD: FINAL STATUS: Dry Hole - Well Abandoned  
 COUNTY: Manitowlin TOWNSHIP: Indian Reserve LOT: CONC:  
 WELL NAME: Great Lakes Carbon No. 3 GREAT LKS CARBON NO. 3  
 OPERATOR: George Skakel GEORGE SKAKEL TOTAL DEPTH: 1235' 1235'  
 DRILLER: Jones & Bradley ELEVATION: 587' 587'  
 GEOLOGIST: R. W. Sanford CO-ORDINATES:

YEAR 1950

CONCESSION

LOT

TOWNSHIP INDIAN RESERVE

MANITOWLIN

WELL NAME

George Skakel - Great Lakes Carbon No. 3

GEOLOGICAL FORMATIONS	TOP	ELEV.	THICK.
Mississ	0	587	5
Lockport	5	582	170
Winfield	175	412	15
Dyer Bay	190	397	35
Carot Head	225	362	60
Manitowlin	285	302	65
Karawong	350	237	75
Nexford	425	162	50
Wekwemikongasing	475	112	190
Sherutandah	665	-78	150
Collingwood	815	-228	20
Trenton	835	-248	195
Black River	1030	-443	185
Basal Beds	1215	-628	20

LAT. \_\_\_\_\_  
 LONG. \_\_\_\_\_  
 SPUDDED: July 10, 1950  
 COMPLETED: July 21, 1950  
 ABANDONED:  
 SAMPLES IN OTTAWA: Yes TRAY No. 2561.- 65

WATER RECORD			
DEPTH	TYPE	LEVEL FROM SURF.	FLOW

CASING AND TUBING RECORD				
SIZE	WEIGHT	SET AT	HOW SET	AMT. RECC

INITIAL GAS RECORD			
INTERVAL	NET PAY	NATURAL FLOW	S.I.

INITIAL OIL RECORD			
INTERVAL	NET PAY	NATURAL FLOW	%A

LOGGING RECORD		
INTERVAL	TYPE	LOG T

CORING RECORD			
No.	INTERVAL	No.	INTERVAL

TOTAL DEPTH (SAMPLES) 1235 -648

TREATMENT	FINAL RESULTS
Nil	OIL Show (?)
875' - 887' Slight Odor (SAMPLE DESCRIPTION ON FILE)	GAS Nil
	PRESSURE



OIL & GAS SHOW - WELL ABANDONED

CIA: 107  
 FIELD: Indian Reserve  
 FINAL STATUS: Oil & Gas Show - Well Abandoned  
 COUNTY: Manitowish  
 TOWNSHIP: Indian Reserve  
 LOT: CONC.  
 WELL NAME: Great Lakes Carbon No. 5  
 OPERATOR: George Skakel  
 GEORGE SKAKEL  
 TOTAL DEPTH: 295' 295'  
 ELEVATION:  
 LOGGIST: R. V. Sanford

GEOLOGICAL FORMATIONS	TOP	ELEV.	THICK.
Drift	0		60 ?
Makemikongasing	60		40
Shagunadah	100		140
Collingwood	240		20
Trenton	260		35

CO-ORDINATES:  
 LAT.  
 LONG.  
 SPUDDED: August 7, 1950  
 COMPLETED: August 17, 1950  
 ABANDONED:  
 SAMPLES IN OTTAWA: Yes TRAY No.: 2569 2568

WATER RECORD			
DEPTH	TYPE	LEVEL FROM SURF.	FLOW
287'	Salt	SALT	
271-74'	Salt	SALT	

CASINO AND TUBING RECORD				
SIZE	WEIGHT	SET AT	HOW SET	AMT. RECOVERED

INITIAL GAS RECORD			
INTERVAL	NET PAY	NATURAL FLOW	S.I.P.
272' - 74'		Show	

INITIAL OIL RECORD			
INTERVAL	NET PAY	NATURAL FLOW	°API
271' - 74'		Show	
287'		Show	

LOGGING RECORD		
INTERVAL	TYPE	LOG T.D.

CORING RECORD			
No.	INTERVAL	No.	INTERVAL

TOTAL DEPTH (SAMPLES) 295  
 295

TREATMENT
287' - 28' 68 Bbls in 12 hrs. 5% oil, 95% salt water
271'-74' 16 Bbls in 4 hrs. 5% oil, 95% salt water.

FINAL RESULTS	
OIL	Show
GAS	Show
PRESSURE	

CONCESSION

107

COUNTY: MANITOWISH TOWNSHIP: INDIAN RESERVE  
 WELL NAME: George Skakel - Great Lakes Carbon No. 5









COUNTY: MANITOULIN TOWNSHIP: INDIAN RESERVE LOT: \_\_\_\_\_ CONC: \_\_\_\_\_  
 WELL NAME: Manitoulin Oil Company No. 5 MANITOULIN OIL Co. No. 5  
 OPERATOR: Manitoulin Oil Company MANITOULIN OIL Co. TOTAL DEPTH: 430' ELEVATION: 430'  
 GEOLOGIST: \_\_\_\_\_ COORDINATES: \_\_\_\_\_

CONCESSION: \_\_\_\_\_ LOT: \_\_\_\_\_ INDIAN RESERVE: \_\_\_\_\_ TOWNSHIP: \_\_\_\_\_ COUNTY: MANITOULIN WELL NAME: Manitoulin Oil No. 5

GEOLOGICAL FORMATIONS	TOP	ELEV.	THICK.
DRIFT			
PORT LAMBTON			
KETTLE POINT			
HAMILTON			
DUNDIE			
COLUMBUS			
DETROIT RIVER			
SYLVANIA			
BOIS BLANC			
ORISKANY			
BASS ISLAND			
SALINA			
UPPER SALT BEDS			
"C" UNIT			SHALE
"B" UNIT			SALT
"A-2" UNIT			ANHYDRITE
			CARBONATE
			SALT
"A-1" UNIT			ANHYDRITE
			CARBONATE
			EVAPORITE
GUELPH - LOW - 40 FT			
CLINTON			BEYNALLS
			THOROLD
			GRIMSBY
CATARACT			CABOT HEAD
			MANITOULIN
			WHIRLPOOL
QUEENSTON			
MEAFORD-DUNDAS			
COLLINGWOOD			
TRENTON			COBOURG
			SHERMAN FALL
			KIRKFIELD
BLACK RIVER			COBOCONK
			GULL RIVER
			SHADOW LAKE
CAMBRIAN			
PRECAMBRIAN			
TOTAL DEPTH (SAMPLES)		<u>430</u>	<u>430</u>

LAT. \_\_\_\_\_ LONG. \_\_\_\_\_  
 SPUDDED: \_\_\_\_\_  
 COMPLETED: 1866  
 ABANDONED: \_\_\_\_\_  
 SAMPLES IN OTTAWA: \_\_\_\_\_ TRAY No. \_\_\_\_\_

WATER RECORD			
DEPTH	TYPE	LEVEL FROM SURF.	FLOW
	<u>SALT</u>	<u>Salt</u>	

CASINO AND TUBING RECORD				
SIZE	WEIGHT	SET AT	HOW SET	AMT. RECOVERED

INITIAL GAS RECORD			
INTERVAL	NET PAY	NATURAL FLOW	S.P.
		<u>Gas recorded</u>	
		<u>Oil recorded</u>	

INITIAL OIL RECORD			
INTERVAL	NET PAY	NATURAL FLOW	S.P.
		<u>Oil recorded</u>	
		<u>Oil recorded</u>	

LOGGING RECORD		
INTERVAL	TYPE	LOG T.D.

CORING RECORD			
No.	INTERVAL	No.	INTERVAL

TREATMENT	FINAL RESULTS
	OIL
	GAS
	PRESSURE









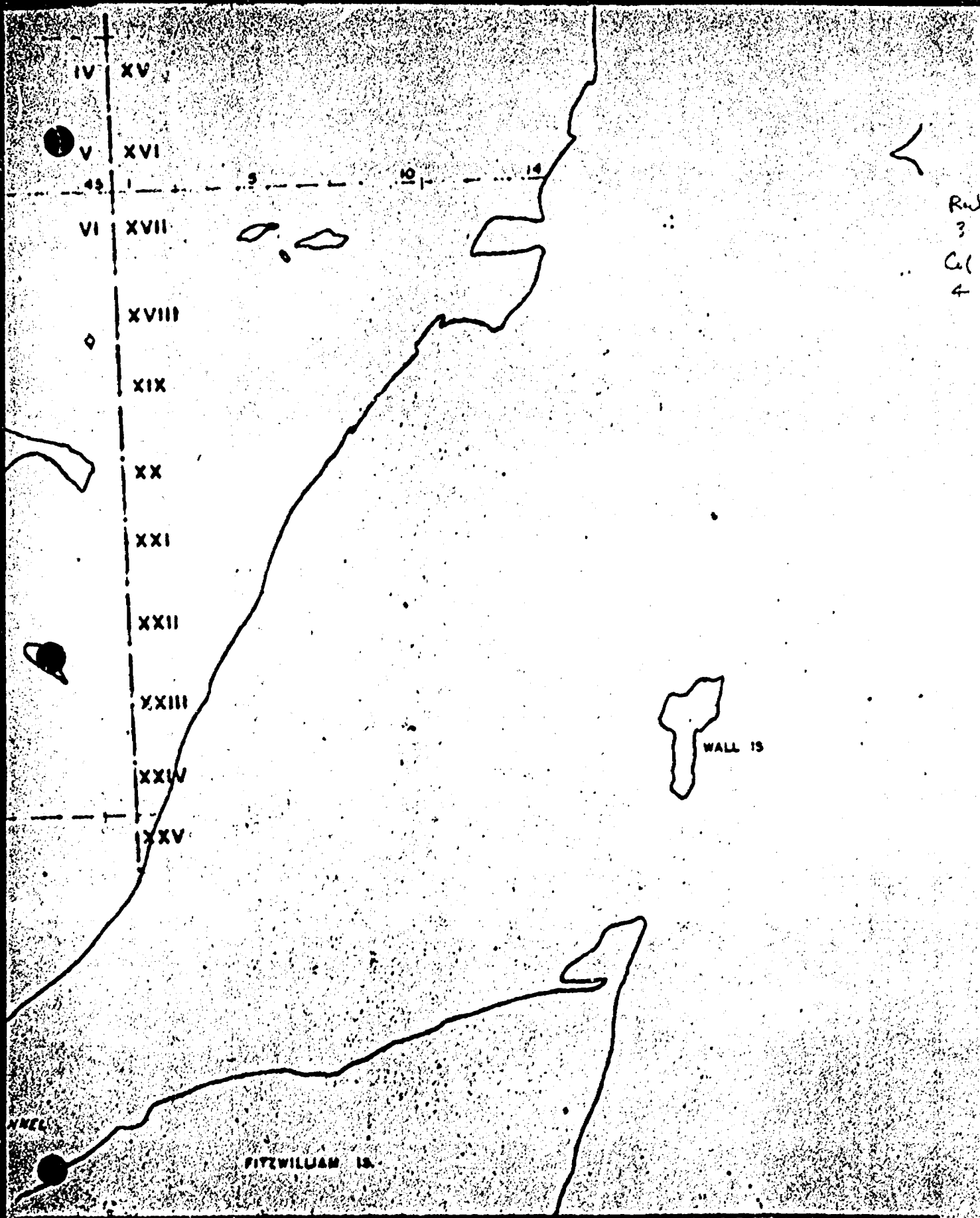












Red  
3  
C/L  
4



1958  
YEAR

B

CONCESSION 1  
LOT 1  
INDIAN RESERVE NO. 26 NO. 3  
KABONI I.R.  
TOWNSHIP  
MANITOULIN IS  
WELL NAME  
IMPERIAL OIL NO. 666

B.P. FORM NO. 41-1

CLASS: N.F.M. FIELD: KABONI I.R. FINAL STATUS: SHOW OF GAS - ABANDONED  
 COUNTY: Manitoulin Is. TOWNSHIP: Kaboni I.P. LOT: 1 CONC: 3  
 WELL NAME: Imperial Oil No. 666 - Kaboni No. 1-B - Indian Reserve No. 26 No. 3  
 OPERATOR: Imperial Oil Limited IMPERIAL OIL LTD TOTAL DEPTH: 801 (same) 801' (SAMPLES)  
 DRILLER: S. Earl S. EARL ELEVATION: 654' H' 654' - I'  
 GEOLOGIST: R. Burgess R. BURGESS CO-ORDINATE S:

GEOLOGICAL FORMATIONS	TOP	FLY.	THICK.	CO-ORDINATE S:
Derrick floor	0	0	655 655	175' N. of S. Line 175' E. of W. Line
Kagamong	1	1	654 654	175' N. of S. Line 175' E. of W. Line
Wikuemikongsing	118	118	537 537	
Shegulindah	275	275	380 380	
Trenton	433	433	222 222	
Black River	647	647	8 8	
Shadow Lake	769	769	29 29	
Pre-Cambrian	798	798	113-113	3' 3+

DEPTH	TYPE	LEVEL FROM SURF.	FLOW
24' 24'	Fresh		Show

SIZE	WTGHT	SET AT	HOW SET	AMT. RECOVER
10 3/4"	15.5	26'		All
8 5/8"	28	65'		All

INTERVAL	NET PAY	NATURAL FLOW	S.I.P.
285'	35'	65 Mcfd.	

INTERVAL	NET PAY	NATURAL FLOW	*API
		None	

INTERVAL	TYPE	LOG T.D.

No.	INTERVAL	No.	INTERVAL
	None		

TOTAL DEPTH (SAMPLES)	801	-146
	801	-116
TREATMENT	None	
FINAL RESULTS	None NAME	
	Show SHOW	



1/2

N I N G

WIKWEMIKONG

SMITH BAY  
SMITH BAY

Row  
2  
Col  
5

W I K W E M I K O N G

2 3 4 5 6 7 8 9 10 11 12 13 14 15 16 20 25

5 10 15 17 20 25

III

IV

VI

VII

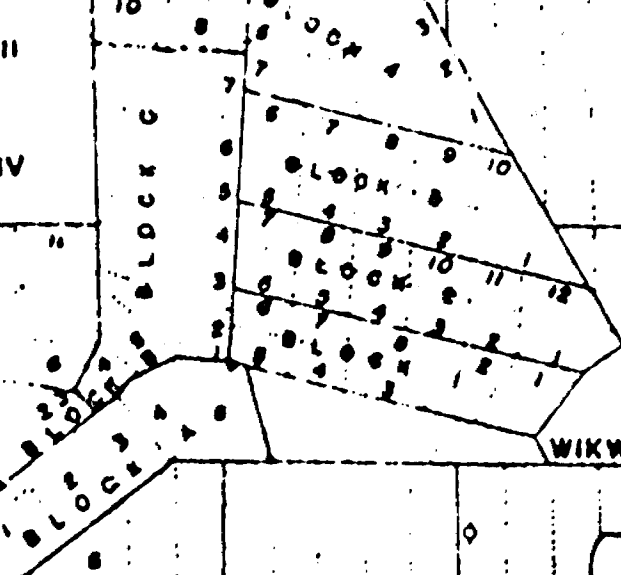
VIII

32 33

34 35

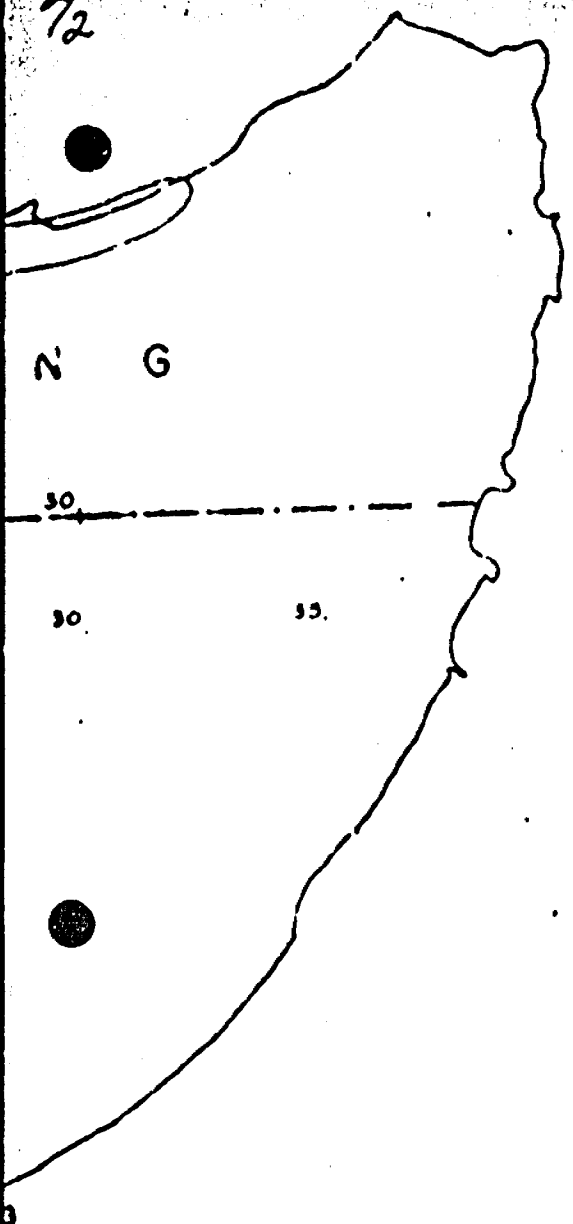
K A B O N I

WIKWEMIKONG:



7/2

CAPE SMITH  
CAPE SMITH



P. 2  
Col  
6

147

639:8