

Diamond Drilling



41101SW0001 0010 SCOLLARD

010

Township of SCOLLARD

Report NO: 10

Work performed by: Clarence W. Wilson

Claim NO	Hole NO	Footage	Date	Note
89999	1	49.5'	Oct/56	
	2	46.5'	Oct/56	
	3	45.0'	Oct/56	
	4	38.0'	Oct/56	
	6	47.5'	Oct/56	
	7	50.0'	Oct/56	
	8	43.0'	Oct/56	
	9	48.0'	Oct/56	
	10	49.0'	Oct/56	

TOTAL: 9 DH 416.5 FT

Notes:

DIAMOND DRILL RECORD

Hole No. 1 Sheet No. 1

Property Clarence W. Wilson, Claim S-89999
Location NE 1/4, S 1/2 lot 3, Con. IV
Scollard Township, District of
Nipissing
Latitude as per map
Departure as per map
Bearing —

Dip - 90°
—
—
—
—
Total Footage 49.5 3/8" core

Elev. Collar —
Datum —
Date Started October, 1956
Date Completed October, 1956
Drilled by Elie and Telesphore Viau
Logged by J. S. Ross JSR

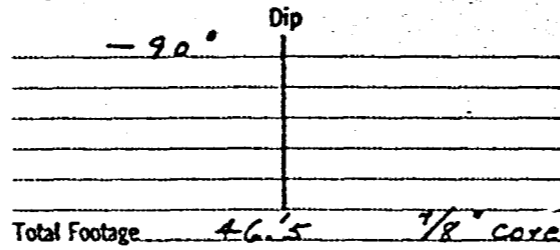
Footage		Formation	Sample Number	Sample Footage	Sample Width	Gold Sample	Gold Sludge	Remarks
From	To							
0	7	<u>Amphibolite - dark green, c.g., granular, massive, low biotite and olivine, remainder hornblende.</u>						
7	15	<u>Pegmatite - greenish grey, ing. to c.g., 30% amphibole. Definite yellow uranophane at 14.5</u>						
15	49.5	<u>Amphibolite - dark greenish grey, c.g., massive, low biotite and olivine and pyroxene. 5" reddish hematized pegmatite vein. 25% biotite on average.</u>						
		<u>End of Hole</u>						

Date of Examination August 25, 1957J. S. Ross

DIAMOND DRILL RECORD

Hole No. 2 Sheet No. 1

Property Clarence W. Wilson, Claim 89999
 Location NE 1/4, S 1/2, lot 3, Can. IV
Scollard Township, District
of Nipissing
 Latitude } _____
 Departure } as per map
 Bearing } _____



Elev. Collar _____
 Datum _____
 Date Started October, 1956
 Date Completed October, 1956
 Drilled by Eric and Telesphore Viau
 Logged by J. S. Ross

Footage		Formation	Sample Number	Sample Footage	Sample Width	Gold Sample	Gold Sludge	Remarks
From	To							
0	14	Amphibolite - dark green, cgy, massive, 25% biotite, low pegmatite veins averaging 2" except 11 1/2" - 12 1/2"						
14	17.3	Pegmatite - dark gray, mg, faint pinkish.						
17.3	46.5	Amphibolite - dark green, cgy, massive, 20% biotite. Pegmatite zones 215-225' low pegmatitic zones averaging 4" that are pinkish and mg.						
		<u>End of Hole</u>						

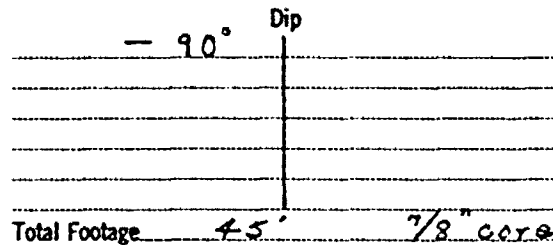
Date of Examination August 25, 1957

J. S. Ross

DIAMOND DRILL RECORD

Hole No. 3 Sheet No. 1

Property Clarence W. Wilson, Claim 89999
 Location NE 1/4, S 1/2, Lot 3, Con. IV
Scallard Township, District
of Nipissing
 Latitude _____
 Departure } a.s. per map
 Bearing _____



Elev. Collar _____
 Datum _____
 Date Started October, 1956
 Date Completed October, 1956
 Drilled by Elic and Telesphora Vian
 Logged by J. L. Ross

Footage		Formation	Sample Number	Sample Footage	Sample Width	Gold Sample	Gold Sludge	Remarks
From	To							
0	26.5	Amphibolite - dk. green, c.g., massive, 15% biotite, granular, minor 1" pegmatite veins.						
26.5	27.5	Core Missing - (sampled).						
29.5	36.5	Pegmatite - pinkish grey, m.a. to 33.5. 33.5-34.5 has 45 c.g. 1" biotite. Rest is c.g. an - altzese. Biotite is lowly radioactive.						
36.5	45	Amphibolite - dark green, c.g., massive, granular.						
		<u>End of Hole</u>						

Date of Examination August 25, 1957

J. L. Ross

DIAMOND DRILL RECORD

Hole No. 4 Sheet No. 1

Property C. W. Wilson, Claim 89999
 Location NE 1/4, S 1/2, Lot 3, Con. 14
Scallard Township, District of
Nipissing
 Latitude } as per map
 Departure }
 Bearing —

Dip
- 90°
 Total Footage 38' 7/8" core

Elev. Collar _____
 Datum _____
 Date Started October, 1956
 Date Completed October, 1956
 Drilled by Elia and Telesphore Vian
 Logged by J. S. Ross

Footage		Formation	Sample Number	Sample Footage	Sample Width	Gold Sample	Gold Sludge	Remarks
From	To							
0	38	Writer saw core from this hole in October 1956 but did not log it. Between October 1956 and August 25, 1957 the complete core was taken for assaying. Thus, no core was logged for this hole but the hole is 38' deep.						

Date of Examination August 25, 1957

J. S. Ross

DIAMOND DRILL RECORD

Hole No. 6 Sheet No. 1

Property C. W. Wilson, Claim 89999
 Location N E 1/4, S 1/2, Lot 3, Con. 14
Scalped Township, District
of Nipissing
 Latitude _____
 Departure as per map
 Bearing _____

Dip
-20°

Total Footage 47.5 1/2" core

Elev. Collar _____
 Datum _____
 Date Started October 1956
 Date Completed October 1956
 Drilled by Elie and Telesphore Via
 Logged by J. S. Ross

Footage		Formation	Sample Number	Sample Footage	Sample Width	Gold Sample	Gold Sludge	Remarks
From	To							
0	47.5	Amphibolite - dark green, s.g., massive, 25% biotite.						
	30.5 - 34	- 50% pink c.g. pegmatites, 20% c.g. 1/2" - 3/4" biotite commonly in bands and clusters. High biotite 30.5 - 32.						
	34 - 35.5	- Amphibolite.						
	35.5 - 44.5	- 5% pink c.g. pegmatite, 10% 1/4" - 1/2" bands of biotite disseminated throughout amphibole.						
		<u>End of Hole</u>						

Date of Examination August 25, 1957

J. S. Ross

DIAMOND DRILL RECORD

 Hole No. 7

 Sheet No. 1

 Property C. W. Wilson, Claim 89229
 Location N.E. 1/4, S. 1/2, Lot 3, Con. 14
Scolland Township, District
of Nipissing.
 Latitude }
 Departure } as per map
 Bearing }

	Dip	
	- 90°	
Total Footage		<u>50'</u> <u>1/8" core</u>

 Elev. Collar _____
 Datum _____
 Date Started October 1956
 Date Completed October 1956
 Drilled by Elicand Telesphore Vian
 Logged by J. S. Ross

Footage		Formation	Sample Number	Sample Footage	Sample Width	Gold Sample	Gold Sludge	Remarks
From	To							
0	5	Pegmatite - dark pink and greenish grey, mag., 40% assimilated amphibolite						
5	26.5	Amphibolite - dark green, c.g., massive, 20-30% biotite.						
26.5	50.0	Amphibolite - mag. 15% disseminated pinkish granitic and pegmatitic material, trace talc at 60'						
		<u>End of Hole</u>						

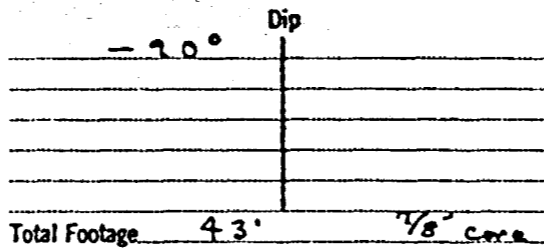
 Date of Examination August 25, 1957

J. S. Ross

DIAMOND DRILL RECORD

Hole No. 8 Sheet No. 1

Property C. W. Wilson, Claim 89999
 Location NE 1/4, S 1/2, Lot 3, Cont. IV
Scollard Township, District
of Nipissing
 Latitude }
 Departure } as per map
 Bearing } _____



Elev. Collar _____
 Datum _____
 Date Started October 1956
 Date Completed October 1956
 Drilled by Elie and Telesphore Veau
 Logged by J. S. Ross

Footage		Formation	Sample Number	Sample Footage	Sample Width	Gold Sample	Gold Sludge	Remarks
From	To							
0	43	Gneiss - 35% granitic and pegmatitic material in poorly formed bands dipping 60° 3" shell 4" pink pegmatite bands dykes.						
		<u>End of Hole.</u>						

Date of Examination August 25, 1957

J. S. Ross

DIAMOND DRILL RECORD

Hole No. 9 Sheet No. 1

Property C. W. Wilson, Claim 89999
 Location NE 1/4, S 1/2, lot 3, Con. 11
Spallard Township, District
of Nipissing.
 Latitude _____
 Departure } as per map
 Bearing _____

Dip
- 90°

 Total Footage 48' 1/8" core

Elev. Collar _____
 Datum _____
 Date Started October 1956
 Date Completed October 1956
 Drilled by Elic and Telesphore Vein
 Logged by J. S. Ross

Footage		Formation	Sample Number	Sample Footage	Sample Width	Gold Sample	Gold Sludge	Remarks
From	To							
0	48	Amphibolite - dark green, s.g., massive, 20-30% disseminated biotite, 10-15% disseminated granitic material from 15m. Poorly formed garnets 17-24.5" 4" reddish pegmatite at 17" Gneissic from 15m.						
		<u>End of Hole</u>						

Date of Examination _____

August 25, 1957

J. S. Ross

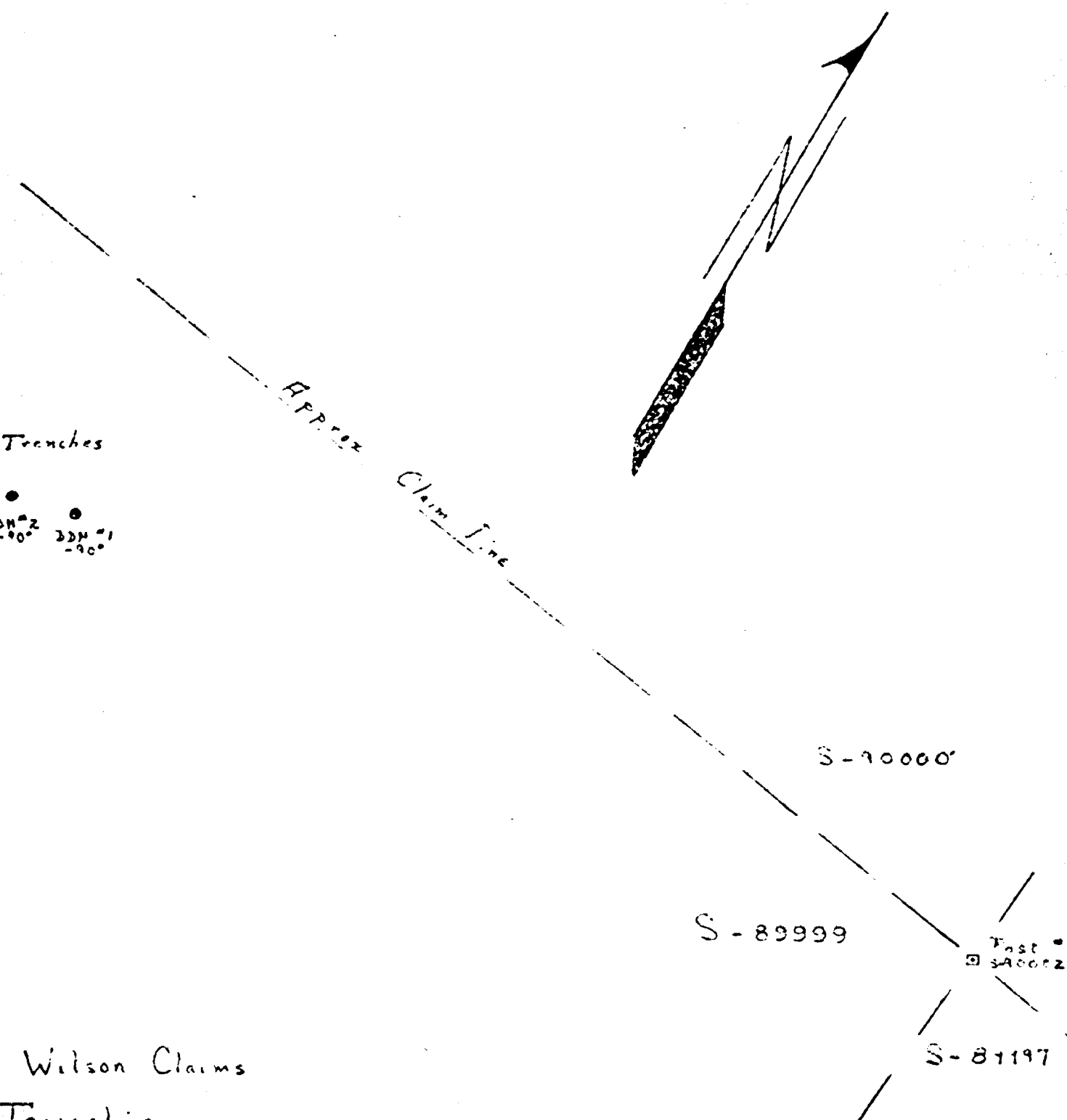
Blasted Pit
3' deep
BLASTED PIT
3' DEEP

DDH #11
-90°
DDH #11
-90°

Blasted Pits
1 1/2' deep
2' deep
3' deep

Trenches

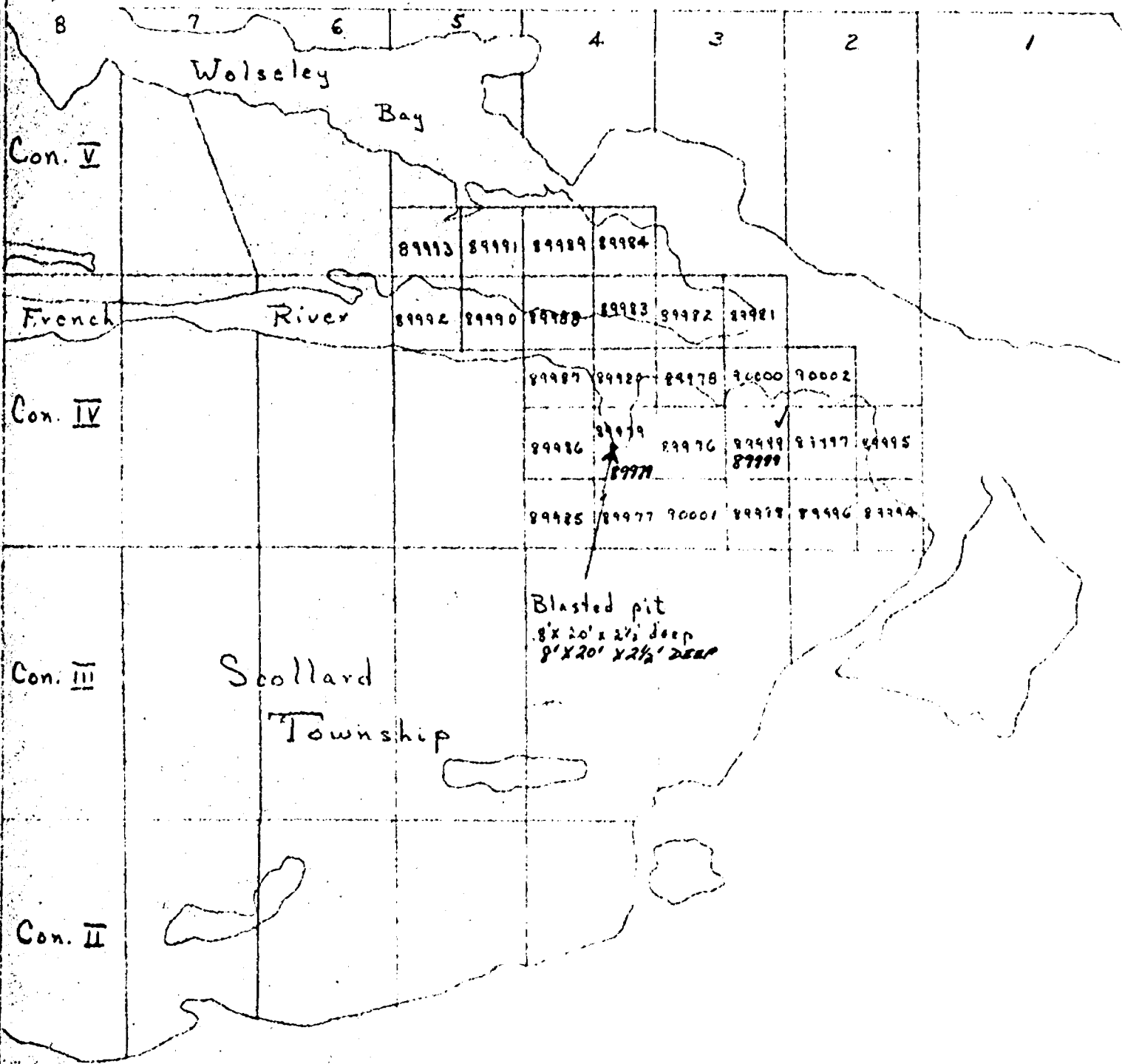
DDH #9 -90°
DDH #8 -90°
DDH #10 -90°
DDH #10 -90°
DDH #7 -90°
DDH #3 -90°
DDH #2 -90°
DDH #1 -90°



Clarence W. Wilson Claims
Scollard Township
District of Nipissing
Scale: 1" = 100'

J.S. Ross
10/9/57

Falconer Township

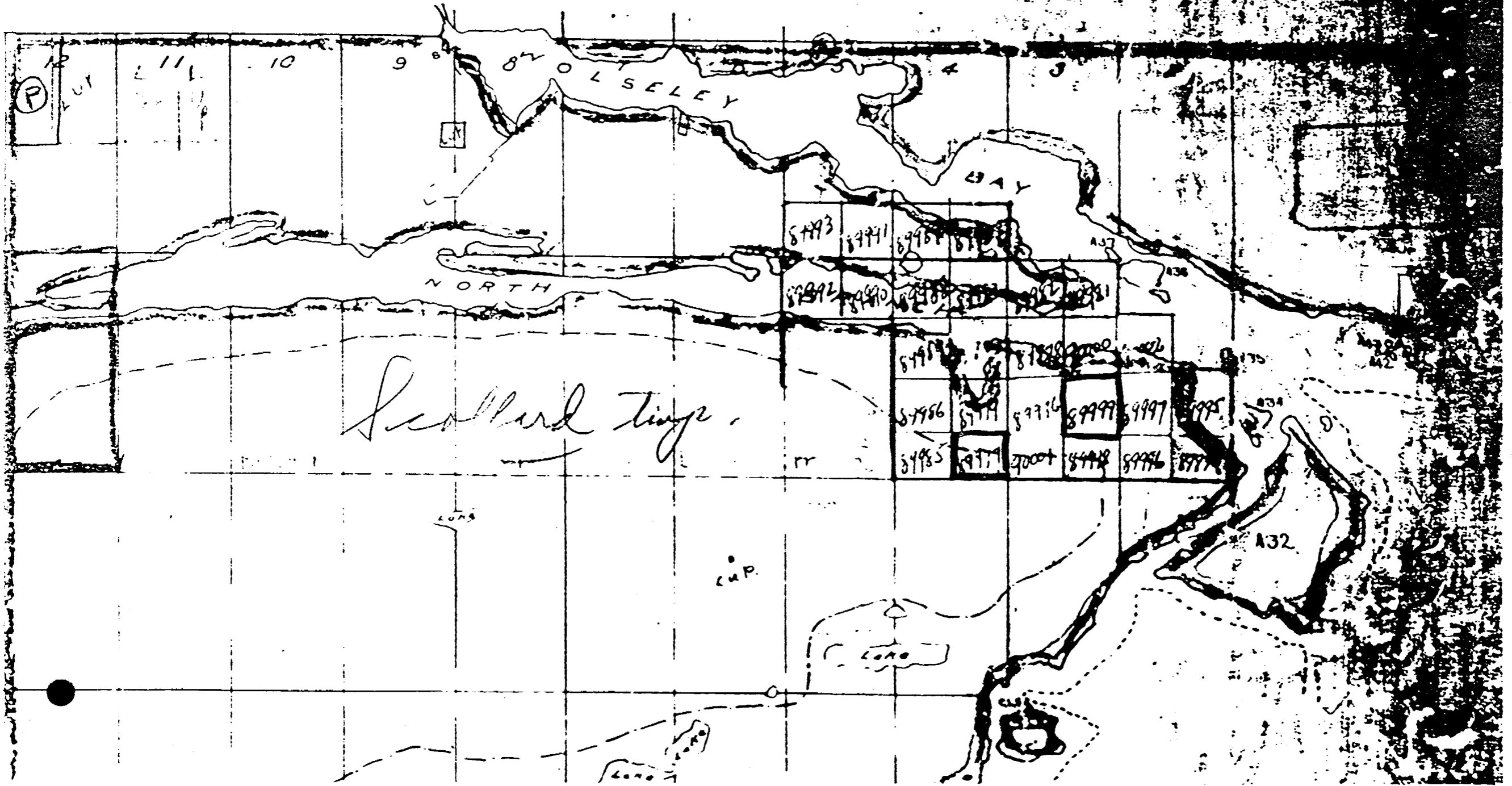


Blasted pit
8' x 20' x 2 1/2' deep
8' x 20' x 2 1/2' DEEP

C.W. Wilson Claims
Scollard Township
District of Nipissing
Lench = 40 chains
J.S. Ross

S-9-320

FALCONER



DATE OF ISSUE
APR 19 1971
MINISTRY OF NATURAL RESOURCES

SCOLLARD

DISTRICT OF SUDBURY

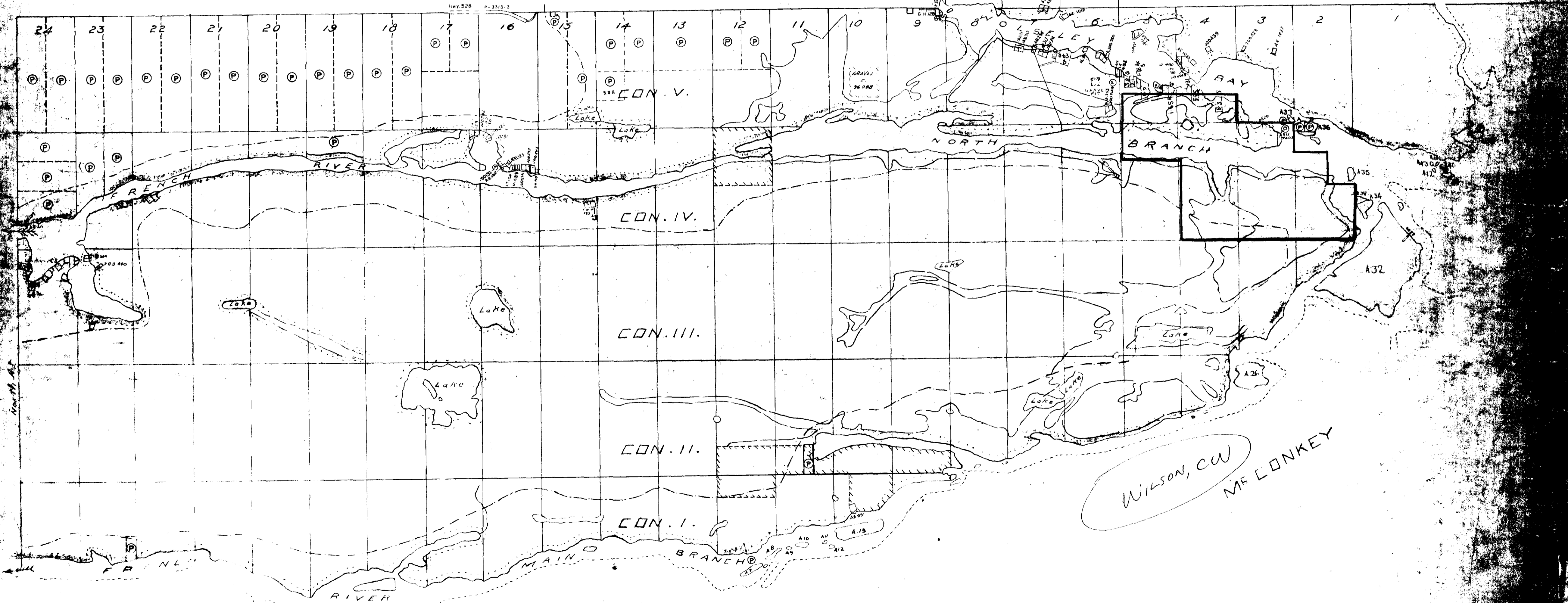
Scale: 40 Chains = 1 inch.

M.1093
ONTARIO
MINISTRY OF NATURAL RESOURCES
SURVEYS AND MAPPING

MARTLAND

FALCONER

LATCHFORD



400' surface rights reservation around all lakes & rivers.

Area marked thus: [hatched symbol] withdrawn from staking

File 122285

Flooding shown thus: [wavy line symbol] contour 645 M.E.P.C.

SCOLLARD-0010, #1

