



41104NE0095 0010B1 CURTIN

Diamond Drilling

010

Township of CURTIN

Report NO: 15

Work performed by: Mattagami Lake Mines

Claim NO	Hole NO	Footage	Date	Note
S 323331	C-4-74-1	325'	Sept/74	(1)
	C-4-74-2	287'	Sept/74	(1)
S 323330	C-3-74-3	238'	Sept/74	(1)
S 226838	C-2-74-4	294'	Sept/74	(2)
S 226836	C-1-74-6	251'	Oct/74	(2)
S 226837	C-1-74-7	270'	Oct/74	(2)

Total: 6 DH 1665

Notes:

(1) #99/74

(2) #120/74

WATTAGAMI LAKE MINES LIMITED - EXPLORATION DIVISION - DIAMOND DRILL HOLE RECORD

PROPERTY Curtin Mines Ltd.	LATITUDE 4+00 W	STARTED Sept. 23, 1974	DIP TEST			
HOLE NO. C-3-74-3	DEPARTURE 3 + 50' S	FINISHED Sept. 26, 1974	Footage	Corrected	Footage	Corrected
BEARING 45°	ELEVATION Surface	LENGTH 238'	100'	46½°		
DIP-COLLAR -45°	SECTION B	LOGGED BY J. Hinzer	230'	45°		

FOOTAGE		DESCRIPTION	Mineralization	SAMPLE NO.	FOOTAGE			ASSAYS	
From	To				From	To	Length		
0.0	16.0	CASING							

16.0 238.0

WEAKLY TO MODERATE SHEARED GABBRO

Light gray intrusive salt & pepper textured gabbro (fresh rock) is sheared and altered to various degrees through the hole.

- 16.0' - 39.0' weakly sheared at 30 and 70° to core axis
- 39.0' - 111.0' almost fresh gabbro, shearing and quartz veining at 108'-110'. Shearing at 60°  
Tr. Cp at 19', 50'.
- 111.0' - 135.0' Strongly sheared fine grained with strong shearing decreasing at depth. At 40° and 60° to core axis  
Tr. Cp at 116-117', 128', 131', 134', 135', 136' - 144', 148', 151'
- 135.0' - 182.0' weakly altered to fresh gabbro  
Tr cp at 169, 172, 182'.
- 182.0'-231.0' Moderate - strongly altered gabbro sheared at 20-40° to core axis with total mineralization exceeding 1% sulfides.  
Tr cp. 182-183, 187-189, 196.6-198, 220-230'.
- 231.0'-238.0' Shearing is weak - fresh gabbro no mineralization was encountered.

Throughout the strongly sheared section 1% po is not uncommon - especially on shears.

E.O.H.

**DUPLICATE COPY  
POOR QUALITY ORIGINAL  
TO FOLLOW**



MATTAGAMI LAKE MINES LIMITED - EXPLORATION DIVISION - DIAMOND DRILL HOLE RECORD

PROPERTY	Curtin Mines Ltd.	LATITUDE	0 + 00	STARTED	Sept. 16/1974	DIP TEST					
						Footage	Corrected	Footage	Corrected	Footage	Corrected
HOLE NO.	C-4-74/2	DEPARTURE	3+50'N and 0+20'at 225°	FINISHED	Sept. 22/1974	100'	45°				
BEARING	45°	ELEVATION	Surface - 6'	LENGTH	287'	250'	44½°				
DIP-COLLAR	-45°	SECTION	B	LOGGED BY	J. Hinzer						

FOOTAGE		DESCRIPTION	% Mineralization	SAMPLE NO.	FOOTAGE			ASSAYS					
From	To				From	To	Length						
0.0	8.0	CASING											
8.0	124.0	SHEARED AND ALTERED GABBRO											

Intrusive texture with abundant fine grained ark green chloritized and sheared sections. Siliceous and brecciated zones are not uncommon. Mineralization is scattered throughout this zone.

- At 18-20' Sheared - brecciated - silicified Tr. po & cp
- At 30.8'-32' " ½ - ½ cp
- At 38', 41', 43' and 45' Tr. cp & po
- At 48' - 50' hematite staining and rusty shear zone.
- At 55' - 56' Tr cp
- At 57' - 59' .3% cp
- At 62.5'-64', 71' (6") .2% cp
- At 77.7'-78.3' mafic dike
- From 78' - 1-3' coreis broken up and heavily sheared. Very altered with minor breccia zones. Brecciation, shearing and chlorite increases towards the lower contact.
- At 106' Tr cp
- At 120.5-122.5' .2-.5% cp

GABBRO

124.0 287.0 Coarse grained - intrusive texture with good salt & pepper appearance - fresh dike - with only minor altered and sheared section.

- Tr cp at 144.5'
- At 161-175' weakly sheared gabbro tr cp parallel to shears - shearing is almost parallel to core axis.
- ½ - 1% Cp at 172-173'
- py + po + cp traces are found throughout.
- 175' - 200' moderately altered gabbro - mineralized veins being almost parallel to the core axis.
- 210' - 215' moderate to strong alteration. Alteration gradually diminishes to fresh gabbro after 240.0'
- At 190 - 222' .2 - .5% cp
- .5 - 1% Po is everywhere present.

At 233 - 246' .5 - 1% cp  
At 264 - 281' .5 - 1% cp

END OF HOLE

**DUPLICATE COPY  
POOR QUALITY ORIGINAL  
TO FOLLOW**

MATTAGAMI LAKE MINES LIMITED - EXPLORATION DIVISION - DIAMOND DRILL HOLE RECORD

PROPERTY Curtin Mines Ltd.	LATITUDE 0 + 00	STARTED September 16, 1974	DIP TEST			
HOLE NO. C-4-74/2	DEPARTURE 3+50' N and 0+20' at 225°	FINISHED September 22, 1974	Footage 100'	Corrected 45°	Footage	Corrected
BEARING 45°	ELEVATION Surface - 6'	LENGTH 287'	250'	44 1/2°		
DIP-COLLAR -45°	SECTION B	LOGGED BY J. Hinzer				

FOOTAGE		DESCRIPTION	% Mineralization	SAMPLE NO.	FOOTAGE			ASSAYS					
From	To				From	To	Length						
0.0	8.0	CASING											
8.0	124.0	SHEARED AND ALTERED GABBRO Intrusive texture with abundant fine grained dark green chloritized and sheared sections. Siliceous and brecciated zones are not uncommon. Mineralization is scattered throughout this zone. At 18 - 20' sheared - brecciated - silicified Tr po & cp At 30.8' - 32' " " 1/2 - 1 1/2% cp At 38', 41', 43', 45' Tr cp & po At 48 - 50' hematite staining & rusty shear zone At 55', 56' Tr cp At 57' - 59' .3% Cp 62.5' - 64', 71' (6") .2% Cp At 77.7' - 78.3' mafic dike From 78' - 103' core is broken up and heavily sheared. Very altered with minor breccia zones. Brecciation, shearing and chlorite increase towards the lower contact. At 106' Tr Cp 120.5 - 122.5' .2 - .5% Cp											
124.0	287.0	GABBRO Coarse grained - Intrusive texture with good salt & pepper appearance - fresh dike - with only minor altered and sheared sections. Tr. cp at 144.5' At 161 - 175' weakly sheared gabbro tr cp parallel to shears - shearing is almost parallel to core axis. 1/2 - 1% Cp at 172 - 173' py + po + cp traces are found throughout 175' - 200' - moderately altered gabbro - mineralized veins being almost parallel to the core axis. 210' - 215' - moderate to strong alteration. Alteration gradually diminishes to fresh gabbro after 240.0'. At 190 - 222' .2 - .5% Cp At 233 - 246' .5 - 1% Cp At 264 - 281' .5 - 1% Cp .5 - 1% Po is everywhere present.											
		END OF HOLE											

*J. Hinzer*

MATTAGAMI LAKE MINES LIMITED - EXPLORATION DIVISION - DIAMOND DRILL HOLE RECORD

PROPERTY	Curtin Mines Ltd.	LATITUDE	4 + 00E	STARTED	Sept. 3/1974	DIP TEST					
						Footage	Corrected	Footage	Corrected	Footage	Corrected
MOLE NO.	C-4-74/1	DEPARTURE	3+40'N and 0+70'N 45°	FINISHED	Sept. 15/1974	100'	47°				
BEARING	225°	ELEVATION	Surface - 10'	LENGTH	325'	200'	45°				
DIP-COLLAR	-45°	SECTION	A	LOGGED BY	J. Hinzer	300'	45°				

FOOTAGE		DESCRIPTION	Mineralization	SAMPLE NO.	FOOTAGE			ASSAYS			
From	To				From	To	Length				

0.0 12.0  
12.0 53.4

CASING

HORNBLENDIC GABBRO

Medium to coarse grained 3-5mm grain size with mafics (hornblende) predominant over light coloured feldspars. Characteristic spotted intrusive textures. Sections of 1-2' intervals are more sheared - fine grained, green with a marked absence of light coloured feldspars (replaced by bluish-gray feldspars). Mineralization of Tr. .5% Po and Tr. cp is characteristic. A quartz vein zone at 35.4-35.8' contained heavy splashes of both po and cp. 46.0' - 47.0' - Intrusive = fine grained dark intermediate intrusive with chilled contact.s

53.4 98.2

HEAVILY SHEARED AND ALTERED GABBRO

Faulted contact - fault over 3-4" at 35° to core axis contact (chilled) at 90° to the fault. Fine grained chilled margin carried tiny barren po veinlets. Grain size of 1mm and fine grained green massive looking rock grades into a porphyritic texture. 2-4mm green feldspars of 10% abundance occur in a dark green sheared amphibolite rich matrix. At 78-79' original unaltered gabbro material is approached. The remainder is finer grained again. Cp and Po in quartz veins was seen at 58-59' and finely disseminated over the remainder. Chilled basal contact at 98.2' is at 40-45° to the core axis.

98.2 102.5

GABBRO

As in section 12.0'-53.4' coarse grained. N.B. it appears that 53.4'-98.2' is a different type of gabbro intruding into the first one - i.e. multiple intrusive.

FAULT BRECCIA ZONE

102.5 105.0

At 60-70° to the core axis - Sedimentary as well as dike rock material with tr cp-po-he, were found in this section.

BASALT DIKE

105.0

109.6 Dark green mafic fine grained intrusive with qtz. vein containing 30% Ars over 1-2"

**DUPLICATE COPY  
POOR QUALITY ORIGINAL  
TO FOLLOW**

MATTAGAMI LAKE MINES LIMITED - EXPLORATION DIVISION - DIAMOND DRILL HOLE RECORD

PROPERTY	Curtin Mines Ltd.	LATITUDE	4 + 00 E	STARTED	September 3, 1974 *	DIP TEST					
						Footage	Corrected	Footage	Corrected	Footage	Corrected
HOLE NO.	C-4-74/1	DEPARTURE	3+40' N and 0+70' N 45° E	FINISHED	September 15, 1974	100'	47°				
BEARING	225°	ELEVATION	Surface - 10'	LENGTH	325'	200'	45°				
DIP-COLLAR	-45°	SECTION	A	LOGGED BY	J. Hinzer	300'	45°				

FOOTAGE		DESCRIPTION	% Mineralization	SAMPLE NO.	FOOTAGE			ASSAYS					
From	To				From	To	Length						
0.0	12.0	CASING											
12.0	53.4	<p><b>HORNBLENDIC GABBRO</b></p> <p>Medium to coarse grained 3-5 mm grain size with mafics (hornblende) predominant over light coloured feldspars. Characteristic spotted intrusive texture.</p> <p>Sections of 1-2' intervals are more sheared - fine grained, green with a marked absence of light coloured feldspars (replaced by bluish-gray feldspars).</p> <p>Mineralization of Tr - .5% Po &amp; Tr. cp is characteristic. A quartz vein zone at 35.4 - 35.8' contained heavy splashes of both po and cp.</p> <p>46.0' - 47.0' - Intrusive - fine grained dark intermediate intrusive with chilled contacts.</p>											
53.4	98.2	<p><b>HEAVILY SHEARED AND ALTERED GABBRO</b></p> <p>Faulted contact - fault over 3-4" at 35° to core axis contact (chilled) at 90° to the fault.</p> <p>Fine grained chilled margin carried tiny barren po veinlets. Grain size of &lt; 1 mm and fine grained green massive looking rock grades into a porphyritic texture. 2-4 mm green feldspars of 10% abundance occur in a dark green sheared amphibolite rich matrix. At 78 - 79' original unaltered gabbro material is approached. The remainder is finer grained again.</p> <p>Cp &amp; Po in quartz veins was seen at 58 - 59' and finely disseminated over the remainder.</p> <p>Chilled basal contact at 98.2' is at 40-45° to the core axis.</p>											
98.2	102.5	<p><b>GABBRO</b></p> <p>As in section 12.0' - 53.4' coarse grained.</p> <p>N.B. it appears that 53.4' - 98.2' is a different type of gabbro intruding into the first one - i.e. multiple intrusive.</p>											
102.5	105.0	<p><b>FAULT BRECCIA ZONE</b></p> <p>At 60 - 70° to the core axis - Sedimentary as well as dike rock material with tr cp - po - he, were found in this section.</p>											
105.0	109.6	<p><b>BASALT DIKE</b></p> <p>Dark green mafic fine grained intrusive with qtz. vein containing 30% Ars over 1-2".</p>											

\* September 3 - 11, 1974 - setting up camp & living quarters.

FOOTAGE		DESCRIPTION	Mineralization	SAMPLE NO.	FOOTAGE			ASSAYS
From	To				From	To	Length	
		<u>GABBRO</u>						
109.6	199.6	Coarse grained intrusive texture. Sheared and brecciated zones are not uncommon. At 111' - minor brecciated shear zone - heavily chloritized. At 136' - 139.6' - brecciated quartz - chlorite section. At 142' - 1/2" cp splash in quartz vein At 158 - 160' - minor po & cp mineralization on shears At 196 - 199.6' - shear zone and quartz veining.  Disseminated sulfide values increase towards 142.0' and decrease away. Total sulfide count approximately 1/2%.						
		<u>INTRUSIVE</u>						
199.6	202.6	Fine grained chilled margins at 60-70° to core axis - Dacitic in composition.						
		<u>BRECCIATED CONTACT</u>						
202.6	206.0	Fault zone						
		<u>GABBRO</u>						
206.0	277.0	Coarse grained - intrusive texture. Quartz & chlorite rich hairlike fracture often carry cp. po. & cp. at 208', 217', 1/2" splash of cp at 225'. 252-266 - heavily sheared and altered dike. Gabbroic sections mixed with fine grained quartz vein rich section. Upto 1% sulfides are present but cp is rare. Alteration gradually diminishes with depth.						
		<u>QUARTZITE</u>						
277.0	291.6	Sharp contact. Light to medium gray quartzite with narrow argillaceous seams or beds.						
		<u>HEAVILY SHEARED AND ALTERED GABBRO</u>						
291.6	325.0	Section is fine grained with intrusive texture - i.e. feldspar poor version of gabbro - similar to 53.4' - 98.2' (but no green feldspar phenocrysts). Minor zone of po and cp mineralization was seen at 297.0' for the remainder mineralization is nil - trace only.  END OF HOLE.						

**DUPLICATE COPY  
POOR QUALITY ORIGINAL  
TO FOLLOW**





**WATTAGAMI LAKE MINES LIMITED - EXPLORATION DIVISION - DIAMOND DRILL HOLE RECORD**

PROPERTY	Curtin Mines Optic	LATITUDE	45+50' West	STARTED	September 27, 1974	DIP TEST					
						Footage	Corrected	Footage	Corrected	Footage	Corrected
MOLE NO.	C-2/74/4	DEPARTURE	4 + 20' South	FINISHED	October 7, 1974	100	-46°				
BEARING	225°	ELEVATION	Surface	LENGTH	294.0'	200	-45°				
DIP-COLLAR	-45° South	SECTION	C	LOGGED BY	Joe Hinzer						

From	FOOTAGE To	DESCRIPTION	SAMPLE NO.	Mineralization	FOOTAGE			ASSAYS			
					From	To	Length	Ni	Cu	Mineralization	
0.0	10.0	CASING									
10.0	15.0	Quartzite-Brown to green with sections of pelitic material									
15.0	21.0	Contact zone - section of quartzite - gabbro contact, containing chilled gabbro, quartz veins, mylonite zones. 15-16' - quartz vein 16-21' - fine grained brecciated dike or mylonite.									
21.0	294.0	Hornblendic (omphibolitized) Gabbro - sill. Unit is gray with lighter and darker section. An ophitic texture with average grain size of 3-4mm contains omphiboles 2-3mm and feldspar (white) 3-4mm grains in a neutral gray or greenish matrix. Two sets of fractures with one predominant and mostly quartz filled as well as a network of hairline fractures with quartz, carbonate, chlorite and epidote are also present. - Rock is fairly fresh, but abundant zones of shearing alteration occur. In these zones, grain size decreases and feldspar is altered, often quartz is added. 21.0-33.0' - fine grained chilled margin with some fracturing and shearing at 10° and 40° to core axis Tr cp and weakly disseminated po 28-33' 45.0'-56' - Zone of pink K-spar (strong) alteration upto. 1% py Tr cp at 41', 43', 46', 47', 50', 60', 72', 63.5'-64.0' - Fault Breccia zone-mylonitic zone, Shearing at 10-20° and 60° to core axis. 105.0 - 106.0' Fault breccia, mylonite, quartz veining 111.0 - 112.0' 115.0 - 125.0' Strongly altered and sheared - many quartz veins and fine grained sections. Shearing at 30°, 60-70° to core axis. Strongly sheared zones of 4"-1.0' continue, diminishing rapidly below 165.0'. Tr cp are abundant between 112.0'-172.0' with associated minor po. 175.0'-205' No traces of any type of mineralization.	1658	27.5	33.5	6.0	.01	.02	Tr	cp	po
			1659	40.0	45.0	5.0	.01	.02	"	"	"
			1660	45.0	50.0	5.0	.01	.03	"	"	"
			1661	111.0	115.0	4.0	.01	.03	"	"	"
			1662	115.0	120.0	5.0	.01	.02	"	"	"
			1663	120.0	125.0	5.0	.02	.04	"	"	"
			1664	125.0	130.0	5.0	.01	.03	"	"	"
			1665	132.0	137.0	5.0	.01	.02	"	"	"
			1652	142.0	147.0	5.0	.06	.22	.5-1%	cp	.5% po
			1653	147.0	152.0	5.0	.04	.11	Tr	cp	po
			1654	152.0	157.0	5.0	.01	.05	"	"	"
			1666	158.0	162.0	5.0	.01	.02	"	"	"
			1667	168.0	172.0	4.0	.01	.03	.1-5%	cp	

**DUPLICATE COPY  
POOR QUALITY ORIGINAL  
TO FOLLOW**

\* September 27-October 4, 1974 1 mile more.

# 120/174  
 20/67

CERTAIN TWP.  
 MATTAGAMI LAKE MINES.

MATTAGAMI LAKE MINES LIMITED - EXPLORATION DIVISION - DIAMOND DRILL HOLE RECORD

PROPERTY	Curtin Mines Option	LATITUDE	45 + 50' West	STARTED	September 27, 1974	DIP TEST					
HOLE NO.	C-2-7414	DEPARTURE	4 + 20' South	FINISHED	October 7, 1974	Footage	Corrected	Footage	Corrected	Footage	Corrected
BEARING	225°	ELEVATION	Surface	LENGTH	294.0'	100	-66°				
DIP-COLLAR	45° South	SECTION	C	LOGGED BY	Joe Hlizer	200	-45°				

FOOTAGE		DESCRIPTION	% Mineralization	SAMPLE NO.	FOOTAGE			ASSAYS	
From	To				From	To	Length	Ni	Cu
0.0	10.0	CASING							
10.0	15.0	Quartzite - Brown to green with sections of pelitic material.							
15.0	21.0	Contact zone - Section of quartzite - gabbro contact, containing chilled gabbro, quartz veins, mylonite zones. 15 - 16' - quartz vein 16 - 21' - fine grained brecciated dike or mylonite.							
21.0	294.0	Hornblende (amphibolitized) Gabbro - sill. Unit is gray with lighter and darker sections. An ophitic texture with average grain size of 3-4 mm contains omph'holes 2-3 mm and feldspar (white) 3-4 mm grains in a neutral gray or greenish matrix. Two sets of fractures with one predominant and mostly quartz filled as well as a network of hairline fractures with quartz, carbonate, chlorite and epidote are also present. Rock is fairly fresh, but abundant zones of shearing and alteration occur. In these zones grain size decreases and feldspar is altered, often quartz is added.	Tr cp po	1658	27.5	33.5	6.0'	.01	.02
			Tr cp po	1659	40.0	45.0	5.0'	.01	.02
			" "	1660	45.0	50.0	5.0'	.01	.03
			" "	1661	111.0	115.0	4.0'	.01	.03
			" "	1662	115.0	120.0	5.0'	.01	.02
		21.0' - 33.0' - fine grained chilled margin with some fracturing and shearing at 10°, and 40° to core axis.	" "	1663	120.0	125.0	5.0'	.02	.04
		Tr cp and weakly disseminated po 28 - 33'	" "	1664	125.0	130.0	5.0'	.01	.03
		45.0' - 56.0' - zone of pink K-spar (strong alteration up to 17 py.	" "	1665	132.0	137.0	5.0'	.01	.02
		Tr cp at 41', 43', 46', 47', 50', 57', 60', 72', 63.5' - 64.0' -	5 - 1% Cp - 5% Pb	1652	142.0	147.0	5.0'	.06	.22
		Fault breccia zone - mylonitic zone. Shearing at 10 - 20° and 60° to core axis.	Tr cp po	1653	147.0	152.0	5.0'	.04	.11
		115.0' - 106.0' Fault breccia, mylonite, quartz veining.	" "	1654	152.0	157.0	5.0'	.01	.05
		118.0' - 112.0'	Tr cp po	1666	158.0	162.0	5.0'	.01	.02
		115.0' - 125.0' Strongly altered and sheared - many quartz veins and fine grained sections. Shearing at 30°, 60 - 70° to core axis.	1 - 5% Cp	1667	168.0	172.0	4.0'	.01	.03
		Strongly sheared - ones of 4" - 1.0' continue, diminishing rapidly below 165.0'.							
		Tr cp are abundant between 112.0' - 172.0' with associated minor po.							
		175.0' - 205.0' No traces of any type of mineralization.							

FOOTAGE		DESCRIPTION	Mineralization	SAMPLE NO.	FOOTAGE			ASSAYS		
From	To				From	To	Length	NI	CU	
21.0	294.0	205.0-245.0' Several zones of strong alteration and shearing at about 5' intervals. Quartz veining is abundant and shearing at 25-30° and 45° to core axis.  Tr cp with minor associated po occur at 204-214' at 234-247'  245.0-294.0 Weakly altered and sheared gabbrowth qtz. veining present but diminishing to depth Tr cp at 248', 262-271', 285', 291-293'		1668	239.0	243.0	4.0	.01	.03	Tr.-2% cp
				1669	243.0	247.0	4.0	Tr	.02	Tr po cp
				1655	261.0	266.0	5.0	.01	.04	" " "
				1656	266.0	271.0	5.0	.01	.04	.2-.5% cp
				1657	288.0	293.0	5.0	.01	.03	Tr po cp
294.0			E. O. H.							

**DUPLICATE COPY  
POOR QUALITY ORIGINAL  
TO FOLLOW**



WATTAGAMI LAKE MINES LIMITED - EXPLORATION DIVISION - DIAMOND DRILL HOLE RECORD

Page

PROPERTY	Curtin Mines Ltd.	LATITUDE	0+00	STARTED	October 13, 1974	DIP TEST					
						Footage	Corrected	Footage	Corrected	Footage	Corrected
HOLE NO.	C-1-74/6	DEPARTURE	71+00 West	FINISHED	October 18, 1974	100	45°				
BEARING	225°	ELEVATION	Surface	LENGTH	251.0'	230	47°				
DIP-COLLAR	-45°	SECTION		LOGGED BY	Joe Hinzer						

FOOTAGE		DESCRIPTION	Mineralization	SAMPLE NO.	FOOTAGE			ASSAYS	
From	To				From	To	Length	NI	CU

0.0 10.0  
10.0 251.0

HORNBLENDIC GABBRO

Ophitic textured grey-green in colour with 3-4 mm grain size. White-grey quartz & feldspar grains are abundant in a hornblendic matrix. Shearing in more than one direction is common. Disseminated sulfides mostly po is common throughout.

10.0-33.5' faint shearing at 50° to core axis with slight amount of silicification.

33.5-52.0' alteration slight with shearing at 35° to core axis and quartz veining at 40-50'

Tr cp at 39.0, 45.0-52.0' with upto 1% diss. po .5% cp from 51.0-52.0

52.0-75.0' moderately altered gabbro more mafic in composition with 1% Po and strong splashes of Cp at 75-70.0'

75.0-101.0 moderately altered and sheared at 60° & 30° to core axi with fine grained strongly sheared section at 94-101'. quartz veining and chloritization is abundant. Tr. cp at 77', 80, 81, 100'

101.0-125.0 strongly altered fine grained section 101-110 and 116-118 shearing at 10° & 70° to core axis

125.0-174.0 slightly altered with strong section at 170-174 abundant quartz veining, shearing is at 60° & 30° to the core axis. Tr cp at 163'.

174.0-219.0 Moderate to strong alteration-siliceous fine grained section and abundant chloritic hairline fractures Rusty shear zone at 204.0 - Tr.Cp at 185', 218.0' Tr. po throughout ground core 211.0 - 212.0

Tr.	cp	po	Sample No.	From	To	Length	NI	CU
Tr.	cp	po	1678	35.0	40.0	5.0	.01	.03
Tr.	cp	po	1679	40.0	45.0	5.0	.01	.03
Tr.	cp	po	1680	45.0	50.0	5.0	Tr.	.01
Tr.	cp	po	1681	50.0	55.0	5.0	.02	.03
Tr.	cp	po	1682	55.0	60.0	5.0	.01	.02
Tr.	cp	po	1683	60.0	65.0	5.0	Tr.	.01
Tr.	cp	po	1684	65.0	70.0	5.0	Tr.	.02
Tr.	cp	po	1685	70.0	75.0	5.0	Tr.	.01
Tr.	cp	po	1686	75.0	80.0	5.0	.01	.03
Tr.	cp	po	1687	90.0	95.0	5.0	Tr.	.02
Tr.	cp	po	1688	115.0	120.0	5.0	Tr	Tr
Tr.	cp	po	1689	134.0	139.0	5.0	Tr.	.02
Tr.	cp	po	1690	139.0	144.0	5.0	Tr.	.02
Tr.	cp	po	1691	212.0	217.0	5.0	Tr.	.01
Tr.	cp	po	1692	226.0	231.0	5.0	Tr	.02
Tr.	cp	po	1693	231.0	236.0	5.0	Tr	.02
Tr.	cp	po	1694	236.0	241.0	5.0	Tr	.02
Tr.	cp	po	1695	241.0	246.0	5.0	Tr	.02

**DUPLICATE COPY  
POOR QUALITY ORIGINAL  
TO FOLLOW**

FOOTAGE		DESCRIPTION	MINERALIZATION	SAMPLE NO.	FOOTAGE			ASSAYS
From	To				From	To	Length	

219.0-241.0 slightly altered gabbro, heavily chloritized at 230.0'

230.0-241.0 Tr. cop-2% upto .5% Po

241.0-251.0 slightly altered, sheared at 40° and 50° but perpendicular. Tr cp throughout.

251.0

END OF HOLE

**DUPLICATE COPY  
POOR QUALITY ORIGINAL  
TO FOLLOW**

MATTAGAMI LAKE MINES LIMITED - EXPLORATION DIVISION - DIAMOND DRILL HOLE RECORD

PROPERTY	Curtin Mines Limited	LATITUDE	0400	STARTED	October 13, 1974	DIP TEST					
						Footage	Corrected	Footage	Corrected	Footage	Corrected
MOLE NO.	C-1-74/6	DEPARTURE	71400 WEST	FINISHED	October 18, 1974	100	45°				
BEARING	225°	ELEVATION	Surface	LENGTH	251.0'	230	47°				
DIP-COLLAR	-45°	SECTION		LOGGED BY	Joe Hinzler						

FOOTAGE		DESCRIPTION	% Mineralization	SAMPLE NO.	FOOTAGE			ASSAYS	
From	To				From	To	Length	Ni	Cu
0.0	10.0	CASING							
10.0	251.0	HORNBLENDIC GABBRO							
		Ophitic textured grey-green in colour with 3-4 mm grain size. White-grey quartz & feldspar grains are abundant in a hornblende matrix. Shearing in more than one direction is common. Disseminated sulfides mostly pyrite is common throughout.	Tr. Cp, Po Tr. -.2% Cp, 1% Po	1678 1679 1680	35.0 40.0 45.0	40.0 45.0 50.0	5.0 5.0 5.0	.01 .01 .01	.03 .03 .03
		10.0'-33.5' faint shearing at 50° to core axis with slight amounts of silicification.	.2-5% Cp, 1% Po Tr. Cp, Po	1681 1682	50.0 55.0	55.0 60.0	5.0 5.0	.02 .01	.03 .02
		33.5'-52.0' alteration slight with shearing at 35° to core axis and quartz veining at 40-50'	Tr. Cp, Po	1683 1684 1685 1686	60.0 65.0 70.0 75.0	65.0 70.0 75.0 80.0	5.0 5.0 5.0 5.0	Tr Tr Tr .01	.01 .02 .01 .03
		52.0'-75.0' moderately altered gabbro more mafic in composition with 1% Po and strong splashes of Cp at 75-70.0'	Tr. Cp, Po	1687 1688	90.0 115.0	95.0 120.0	5.0 5.0	Tr Tr	.02 Tr
		75.0' - 101.0' moderately altered and sheared at 60° & 30° to core axis with fine grained strongly sheared sections at 94'-101' quartz veining and chloritization is abundant.	Tr. Cp, Po	1689 1690	134.0 139.0	139.0 144.0	5.0 5.0	Tr Tr	.02 .02
		101.0'-125.0' strongly altered fine grained sections 101-110 and 116-118" shearing at 10° & 70° to core axis	Tr. Cp, Po	1691 1692	212.0 226.0	217.0 231.0	5.0 5.0	Tr Tr	.01 .02
		125.0'-174.0' slightly altered with strong sections at 170-174 abundant quartz veining, shearing is at 60° & 30° to the core axis. Tr. cp at 163'	Tr. Cp, Po	1693 1694 1695	231.0 236.0 241.0	236.0 241.0 246.0	5.0 5.0 5.0	Tr Tr Tr	.02 .02 .02
		174.0'-219.0' Moderate to strong alteration-siliceous fine grained sections and abundant chloritic hair line fractures. Rusty shear zone at 204.0'	Tr. Cp at 185', 218.0' Tr. po throughout ground core - 211.0'-212.0'						
		219.0'-241.0' slightly altered gabbro, heavily chloritized at 230.0'							
		230.0'-241.0' Tr. Cp-.2% up to .5% Po							
		241.0'-251.0' slightly altered, sheared at 40° & 50° but perpendicular. Tr. Cp throughout							
	251.0'	END OF HOLE							



MATTAGAMI LAKE MINES LIMITED - EXPLORATION DIVISION - DIAMOND DRILL HOLE RECORD

Page

PROPERTY Curtin Mines Ltd.	LATITUDE 0+30' North	STARTED October 19, 1974	DIP TEST			
			Footage	Corrected	Footage	Corrected
HOLE NO. G-1-74/7	DEPARTURE 77+50' West	FINISHED October 25, 1974	100	47°		
BEARING 35°	ELEVATION Surface	LENGTH 270.0'	230	45°		
DIP-COLLAR -45°	SECTION	LOGGED BY JOE HINZER				

FOOTAGE		DESCRIPTION	% Mineralization	SAMPLE NO.	FOOTAGE			ASSAYS	
From	To				From	To	Length		
0.0	10.0	CASING						NI	CU
10.0	270.0	ALTERED HORNBLENDIC GABBRO							

Ophitic textured with dark and light coloured minerals 3-4mm in grain size. Variable composition shows more sillaceous and more mafic sections alternating. Shearing is abundant.

10.0'-56.0' Slightly sheared and altered. Shearing at 10° and 60° to the core axis. Core is strongly silicified and chloritized beyond 44.0' Tr cp at 44-53' with 1% Po throughout.

56.0-128.0 Strongly altered gabbro. Numerous dark fine grained sections with absence of feldspars. Hairline fractures predominate. Rusty shear zone at 104 Chloritization, quartz veining and shearing strong at 110-127'. Shearing is at 5°-25 and 60° to the core axis.

Tr cp at 56-58', 62'-63', 92', 94'-95', 105, 107, 116, 123, 127-128. Po is about 1% throughout

128.0-153.0 Shearing is weak to moderate becoming strong at the base.

Tr cp at 135-142, 151, -156, .5-1%cp, 146-151, upto 1%po "

153.0-178.0. Strongly altered gabbro. Shear zone with quartz veining and hematite staining from 161-171. Still low colour index. Tr. 5% - Cp at shear zone.

178.0'270.0 Slightly altered light coloured quartz and feldspar rich gabbro. Odd dark coloured and quartz vein zone (chloritized) Disseminated Po throughout. Tr cp at 207.0, 265, 269, shearing at 10-30° and 40-50° to core axis.

E.O.H.

**DUPLICATE COPY  
POOR QUALITY ORIGINAL  
TO FOLLOW**

270.0

MATTAGAMI LAKE MINES LIMITED - EXPLORATION DIVISION - DIAMOND DRILL HOLE RECORD

PROPERTY	Curtin Mines Limited	LATITUDE	0 + 30' North	STARTED	October 19, 1974	DIP TEST					
						Footage	Corrected	Footage	Corrected	Footage	Corrected
MOLE NO.	C-1-74/7	DEPARTURE	77 + 50' West	FINISHED	October 25, 1974	100	47°				
BEARING	35°	ELEVATION	Surface	LENGTH	270.0'	230	45°				
DIP-COLLAR	-45°	SECTION		LOGGED BY	Joe Hinzler						

FOOTAGE		DESCRIPTION	% Mineralization	SAMPLE NO.	FOOTAGE			ASSAYS	
From	To				From	To	Length	Ni	Cu
0.0'	10.0'	CASING							
10.0	270.0	Altered Hornblende Gabbro							
		Cphitic textured with dark and light coloured minerals 3 - 4 mm in grain size. Variable composition shows more siliceous and more mafic sections alternating. Shearing is abundant.	1 Po tr Cp 1 Po tr Cp	1676 1697	43.0 48.0	48.0 53.0	5' 3'	.01 .01	.04 .03
		10.0' - 56.0' Slightly sheared and altered. Shearing at 10° and 60° to the core axis. Core is strongly silicified and chloritized beyond 44.0'. Tr. Cp at 44 - 53' with 1% Po throughout.		1696 1699	63.0 67.0	67.0 75.0	5' 8'	.01 .01	.03 .03
		56.0' - 128.0' Strongly altered gabbro. Numerous dark fine grained sections with absence of feldspars. Hairline fractures predominate. Rusty shear zone at 104 chloritization, quartz veining and shearing strong at 110 - 127'. Shearing is at 5° - 25° and 60° to the core axis. Tr. Cp at 56' - 58', 62' - 63', 92', 94' - 95', 105', 107', 116', 123', 127' - 128'. Po is about 1% throughout.	1 Po Tr Cp " " " " " " " "	1700 4601 4602	92.0 97.0 102.0	97.0 102.0 107.0	5' 5' 5'	.02 .02 .01	.06 .06 .04
		128.0' - 153.0' Shearing is weak to moderate becoming strong at the base. Tr. Cp at 135' - 142', 151' - 156', .5 - 1% Cp, 146' - 151', up to 1% Po.	1 Po Tr Cp " " " " " " " "	4603 4604 4605 4606	135.0 146.0 151.0 156.0	140.0 151.0 156.0 166.0	5' 6' 5' 10'	.02 .08 .03 .03	.04 .20 .12 .03
		153.0' - 178.0' Strongly altered gabbro. Shear zone with quartz veining and hematite staining from 161' - 167'. Still low colour index. Tr - .5% Cp at shear zone.							
		178.0' - 270.0' Slightly altered light coloured quartz and feldspar rich gabbro. Odd dark coloured and quartz vein zone (chloritized). Disseminated Po throughout. Tr. Cp at 207.0', 265', 269'. Shearing at 10 - 30° and 40 - 50° to core axis.							
270.0'		E.C.H.							

#74-94

RECEIVED

NOV 8, 1974

CURTIN.

TWP.



ONTARIO

THE MINING ACT REPORT OF WORK

file 5.259124

A separate form is required for each type of work to be recorded.

To the Recorder of Sudbury Mining Division

I, MATTAGAMI LAKE MINES LIMITED T. 84

name of Recorded Holder

Miner's Licence

110, 8 King Street East, Toronto, Ontario, M5C 1B5

Post Office Address

do hereby report the performance of 850 days of Diamond Drilling type of work

not before reported to be applied on the following contiguous claims

Claim No. Days Claim No. Days Claim No. Days

.....  
.....  
.....  
.....  
.....  
.....

AS LISTED ON ATTACHED SHEET

Geological Branch ODM  
ASSESSMENT FILES  
RESEARCH OFFICE  
OCT 21 1974  
RECEIVED

All the work was performed on Mining Claim (s) S. 323330 & S. 323331 (In the case of geological and/or geophysical survey (s) where more than 18 claims are involved attach a schedule)

READ CAREFULLY: THE FOLLOWING INFORMATION IS REQUIRED BY THE MINING RECORDER.

- WORK ASSIGNMENT S. 323330 - 238 - BAL. 3762 + S. 323331 - 612 - BAL. 3388
- For Manual Work, Stripping or Opening up of Mines, Sinking Shafts or Other Actual Mining Operations - Names and addresses of the men who performed the work and the dates and hours of their employment.
- For Diamond and other Core Drilling - Footage, No. and angle of holes and diameter of core. Name and address of owner or operator of drill. Dates when drilling was done. Signed core log and sketch in duplicate.
- For Compressed Air or Other Power Driven or Mechanical Equipment
- Type of drill or equipment. Names and addresses of men engaged in operating equipment and the dates and hours of their employment.
- For Power Stripping - Type of equipment. Name and address of owner or operator. Amount expended. Dates on which work was done. Proof of actual cost must be submitted within 30 days of recording.
- With each of the above types of work sketches are required to show the location and extent of the work in relation to the nearest claim post. In the case of diamond or other core drilling the sketch must be submitted in duplicate.
- For Geological and Geophysical Survey - The names and addresses of men employed as well as dates. Type of instrument used in the case of geophysical survey. Reports and maps in duplicate must be filed with the Minister within 60 days of recording.
- For Land Survey - the name and address of Ontario Land surveyor.

The Required Information is as Follows: (Attach a list if this space is insufficient)

	Angle	Footage	Core	Dates
C-4-74/1	-45°	325'	1 3/16"	Sept. 3-Sept. 15, 1974
C-4-74/2	-45°	287'	1 3/16"	Sept. 16-Sept. 22, 1974
C-4-74/3	-45°	238'	1 3/16"	Sept. 23-Sept. 26, 1974

Contractor: N. Morissette Diamond Drilling Ltd., P.O. Box 789, Halleybury, Ontario.

Date October 4, 1974. Signature of Recorded Holder or Agent P. D. Hattie

The Mining Act Certificate Verifying Report of Work

I, J. B. Hinzler  
283 Pharmacy Ave, Apt 916, Scarborough, Ont.  
(Post Office Address)

- hereby certify:
- That I have a personal and intimate knowledge of the facts set forth in the report of work annexed here-to, having performed the work or witnessed same during and/or after its completion.
  - That the annexed report is true.

Dated October 4 19 74

SUDEBURY MINING DIVISION RECEIVED OCT 9 1974

THE PENALTY FOR MAKING A FALSE STATEMENT IN THIS REPORT AND/OR CERTIFICATE IS \$500. OR SIX MONTHS IMPRISONMENT OR BOTH



ONTARIO

THE MINING ACT REPORT OF WORK

A separate form is required for each type of work to be recorded.

To the Recorder of SUDBURY Mining Division

I, MATTAGAMI LAKE MINES (OPTIONEE) name of Recorded Holder T. 84 Miner's Licence SUITE 1110 - 8 KING ST. E., TORONTO Post Office Address

do hereby report the performance of 160 days of DIAMOND DRILLING type of work

not before reported to be applied on the following contiguous claims

Table with 6 columns: Claim No., Days, Claim No., Days, Claim No., Days. Rows include S. 226836, S. 226837, S. 226538, S. 226839.

RECEIVED DEC 31 1974

All the work was performed on Mining Claim (s) S. 226837 - 226838 (In the case of geological and/or geophysical survey (s) where more than 18 claims are involved attach a schedule) WORK ASSIGNMENT S. 226838 - 254 - BALANCE 3746 READ CAREFULLY: THE FOLLOWING INFORMATION IS REQUIRED BY THE MINING RECORDER.

For Manual Work, Stripping or Opening up of Mines, Sinking Shafts or Other Actual Mining Operations - Names and addresses of the men who performed the work and the dates and hours of their employment. For Diamond and other Core Drilling - Footage, No. and angle of hole and diameter of core. Name and address of owner or operator of drill. Dates when drilling was done. Signed core log and sketch in duplicate. For Compressed Air or Other Power Driven or Mechanical Equipment Type of drill or equipment. Names and addresses of men engaged in operating equipment and the dates and hours of their employment. For Power Stripping - Type of equipment. Name and address of owner or operator. Amount expended. Dates on which work was done. Proof of actual cost must be submitted within 30 days of recording. With each of the above types of work sketches are required to show the location and extent of the work in relation to the nearest claim post. In the case of diamond or other core drilling the sketch must be submitted in duplicate. For Geological and Geophysical Survey - The names and addresses of men employed as well as dates. Type of instrument used in the case of geophysical survey. Reports and maps in duplicate must be filed with the Minister within 60 days of recording. For Land Survey - the name and address of Ontario Land surveyor.

The Required Information is as Follows: (Attach a list if this space is insufficient)

Table with 6 columns: Hole, Angle, Claim, Footage, Core Size, Dates. Rows include C-2-74-4, C-1-74-6, C-1-74-7.

Contractor: N. Morissette Diamond Drilling Ltd., P.O. Box 789, Haileybury, Ontario.

Date November 12, 1974. Signature of J. D. Harvey (Recorded Holder or Agent)

The Mining Act Certificate Verifying Report of Work

I, JOHN D. HARVEY, Suite 1110 - 8 King St. East, Toronto, Ontario. (Post Office Address)

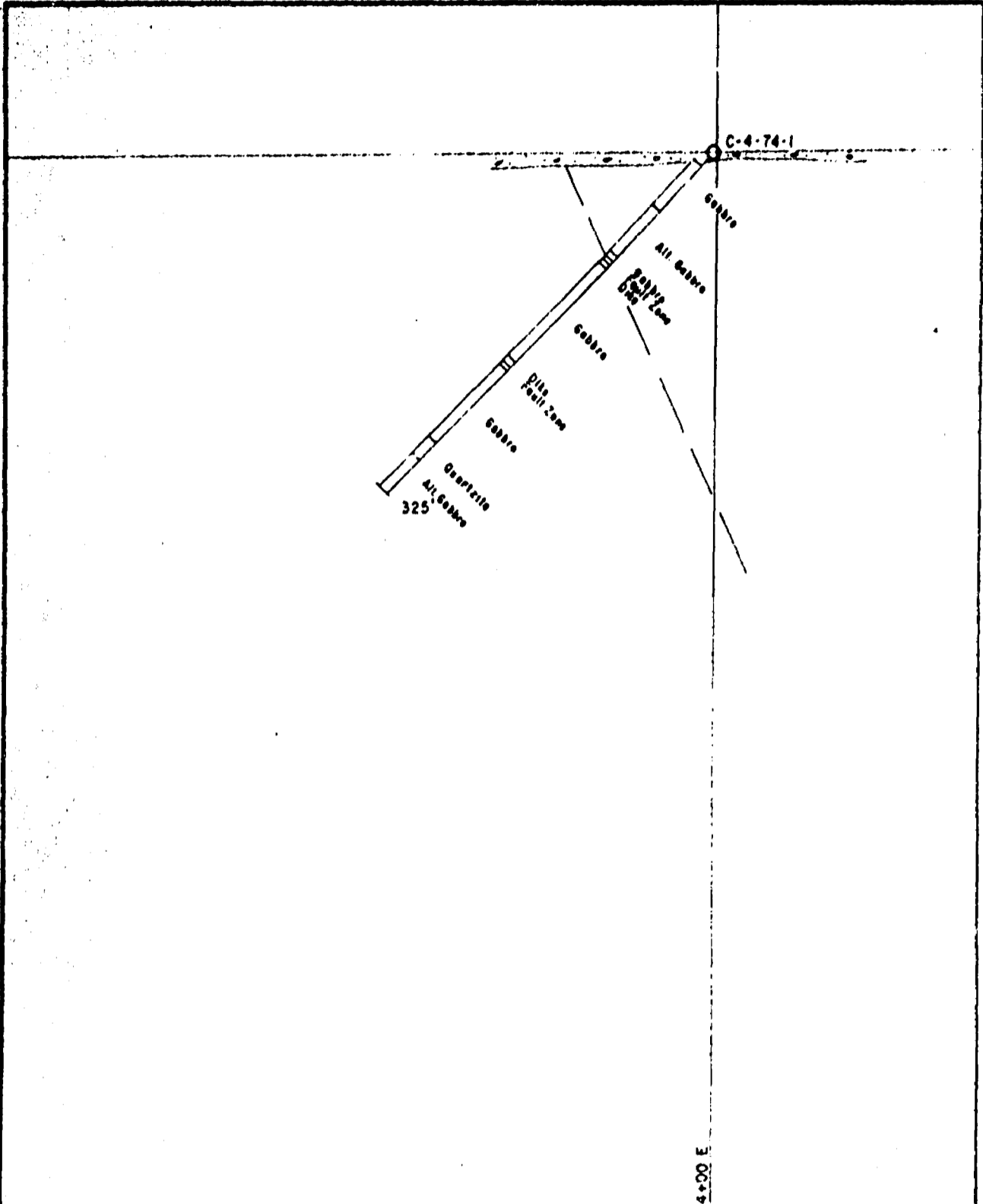
hereby certify:

- 1. That I have a personal and intimate knowledge of the facts set forth in the report of work annexed hereto, having performed the work or witnessed same during and/or after its completion. 2. That the annexed report is true.

Dated November 12, 1974. Signature of J. D. Harvey

TOTAL FOOTAGE DRILLED - 815 BALANCE - 655

THE PENALTY FOR MAKING A FALSE STATEMENT IN THIS REPORT AND/OR CERTIFICATE IS \$500. OR SIX MONTHS IMPRISONMENT OR BOTH



MATTAGAMI LAKE MINES LTD.  
 EXPLORATION DIVISION

---

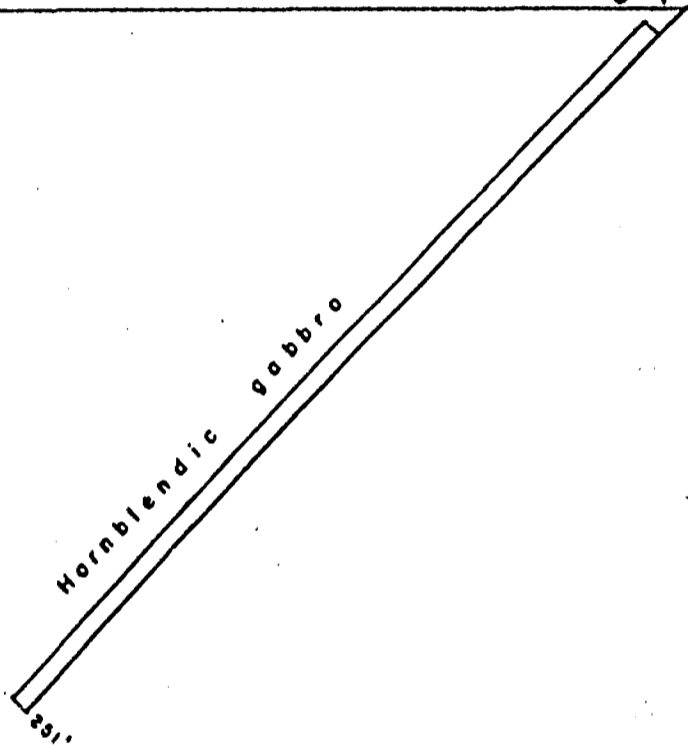
PROJECT: CURTIN MINES OPTION  
 SECTION: A  
 D.D.H.# C-4-74-1

---

SCALE: 1" = 100 FEET  
 DATE: SEPT. 1974      DRW. BY:

← S 45° W. →

C-1-74-6



MATTAGAMI LAKE MINES LTD.

EXPLORATION DIVISION

PROJECT: CURTIN MINES  
SECTION:

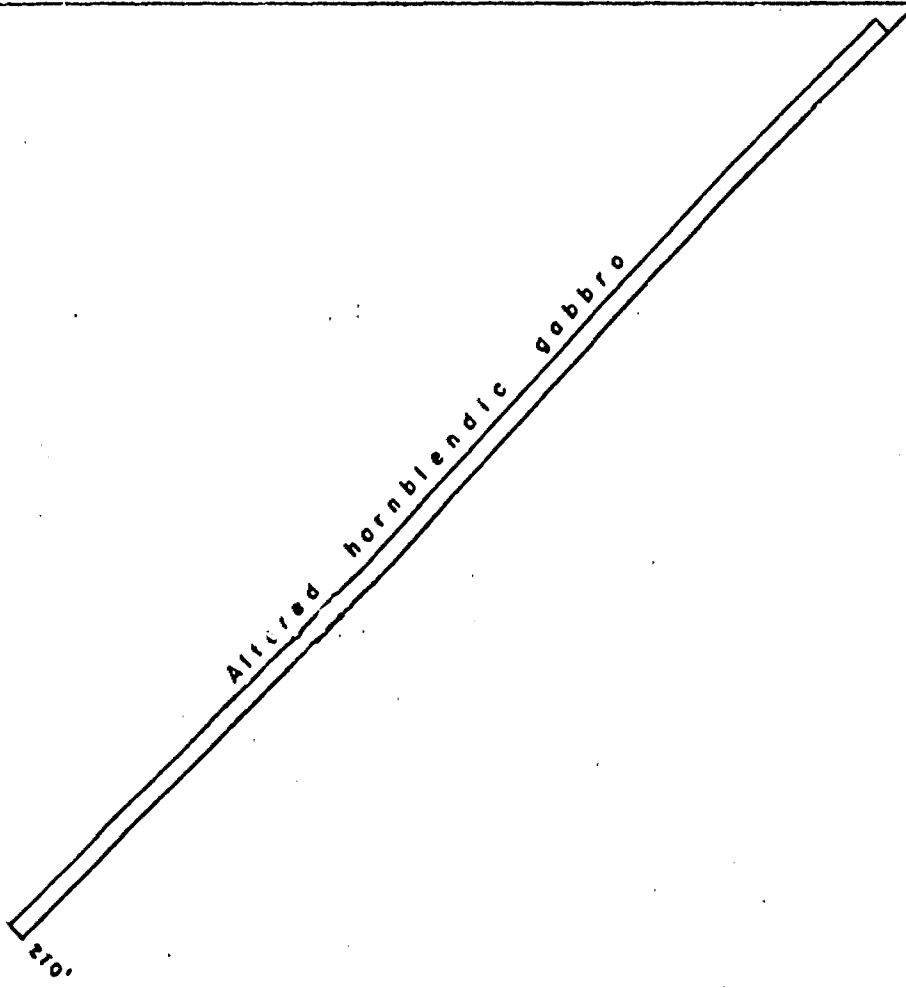
D.D.H.# C-1-74-6

SCALE: 1" = 50 FEET

DATE: NOV. 7, 1974 DRW. BY: S.

← N 35° E. →

C-1-74-7



MATTAGAMI LAKE MINES LTD.

EXPLORATION DIVISION

PROJECT: CURTIN MINES

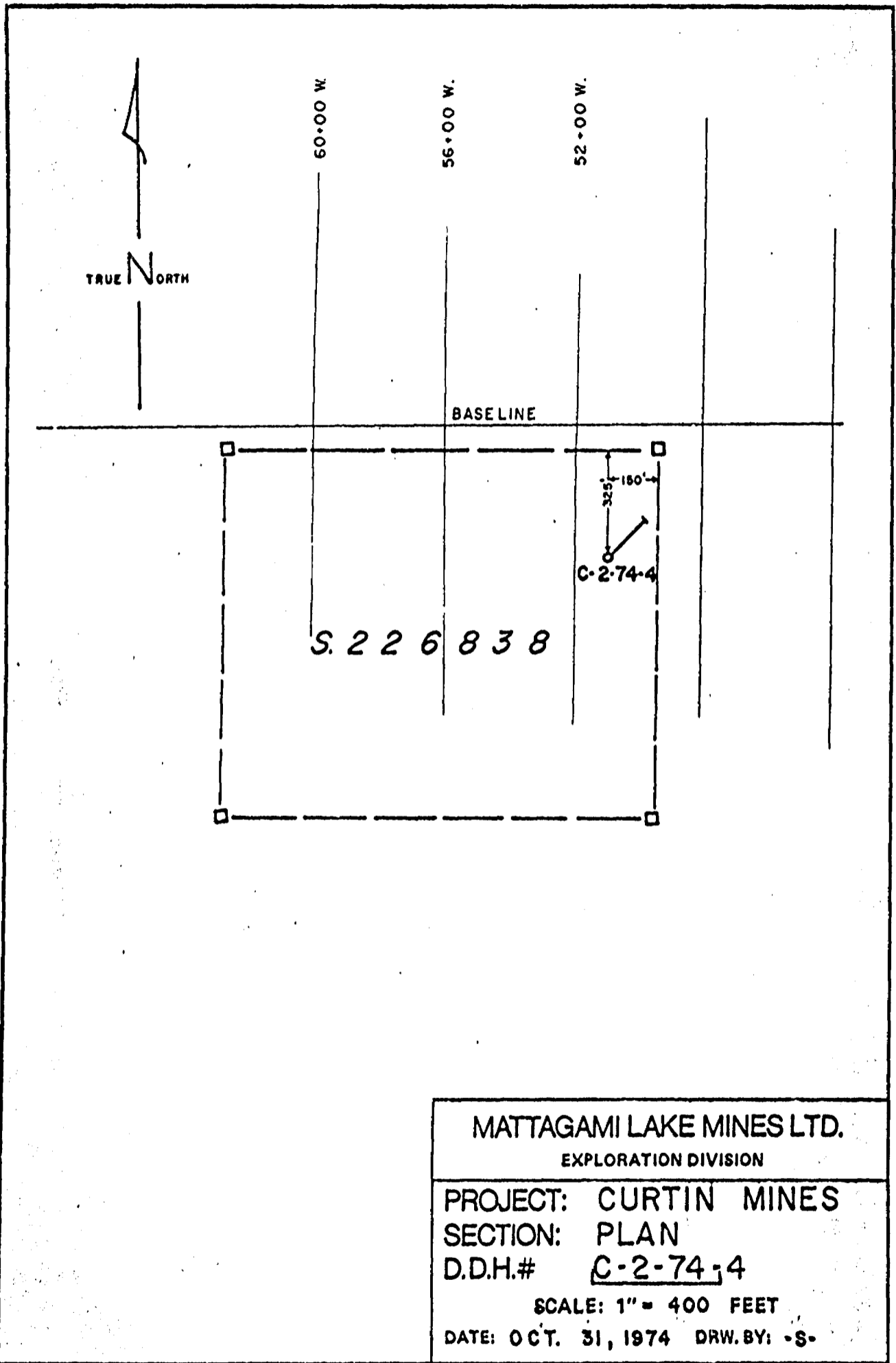
SECTION:

D.D.H.# C-1-74-7

SCALE: 1" = 50 FEET

DATE: NOV. 7, 1974

DRW. BY: -S-



MATTAGAMI LAKE MINES LTD.

EXPLORATION DIVISION

PROJECT: CURTIN MINES

SECTION: PLAN

D.D.H.# C-2-74-4

SCALE: 1" = 400 FEET

DATE: OCT. 31, 1974 DRW. BY: -S-



← S. 45° W —————

C-2-74-4

Coal  
Quartzite  
Contact zone  
Gabbro

422'

MATTAGAMI LAKE MINES LTD.

EXPLORATION DIVISION

PROJECT: CURTIN MINES

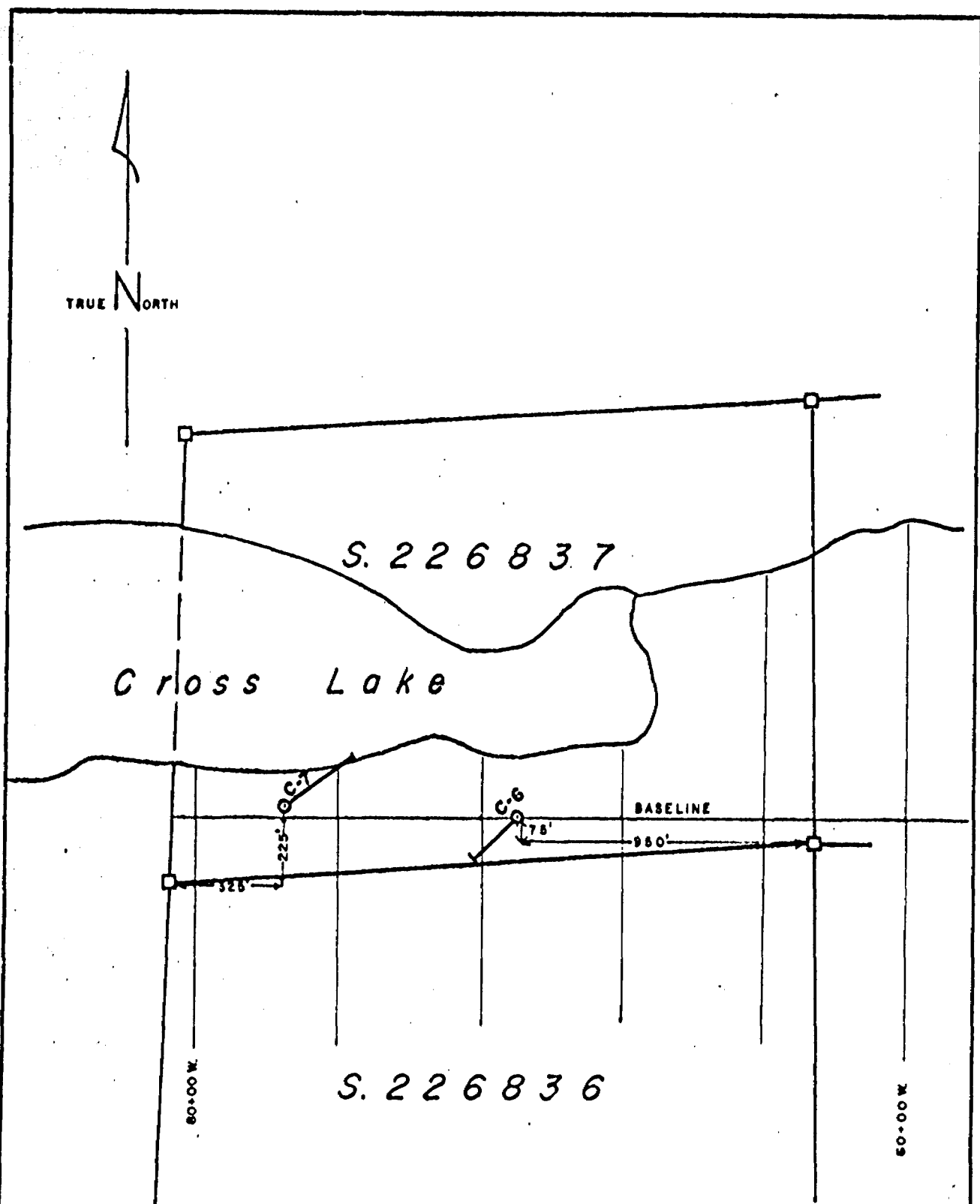
SECTION:

D.D.H.# C-2-74-4

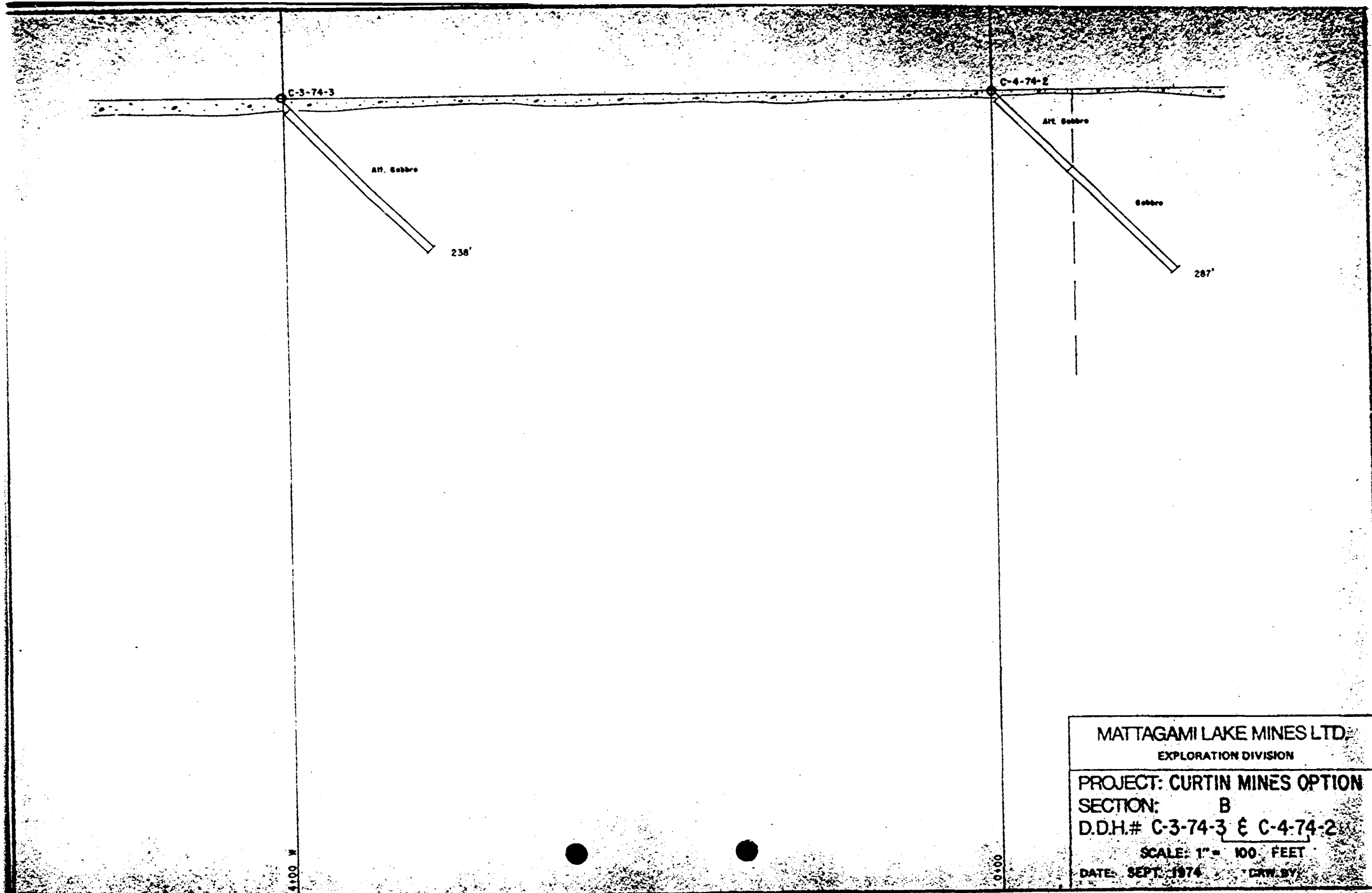
SCALE: 1" = 50 FEET

DATE: OCT. 31, 1974

DRW. BY: -S-



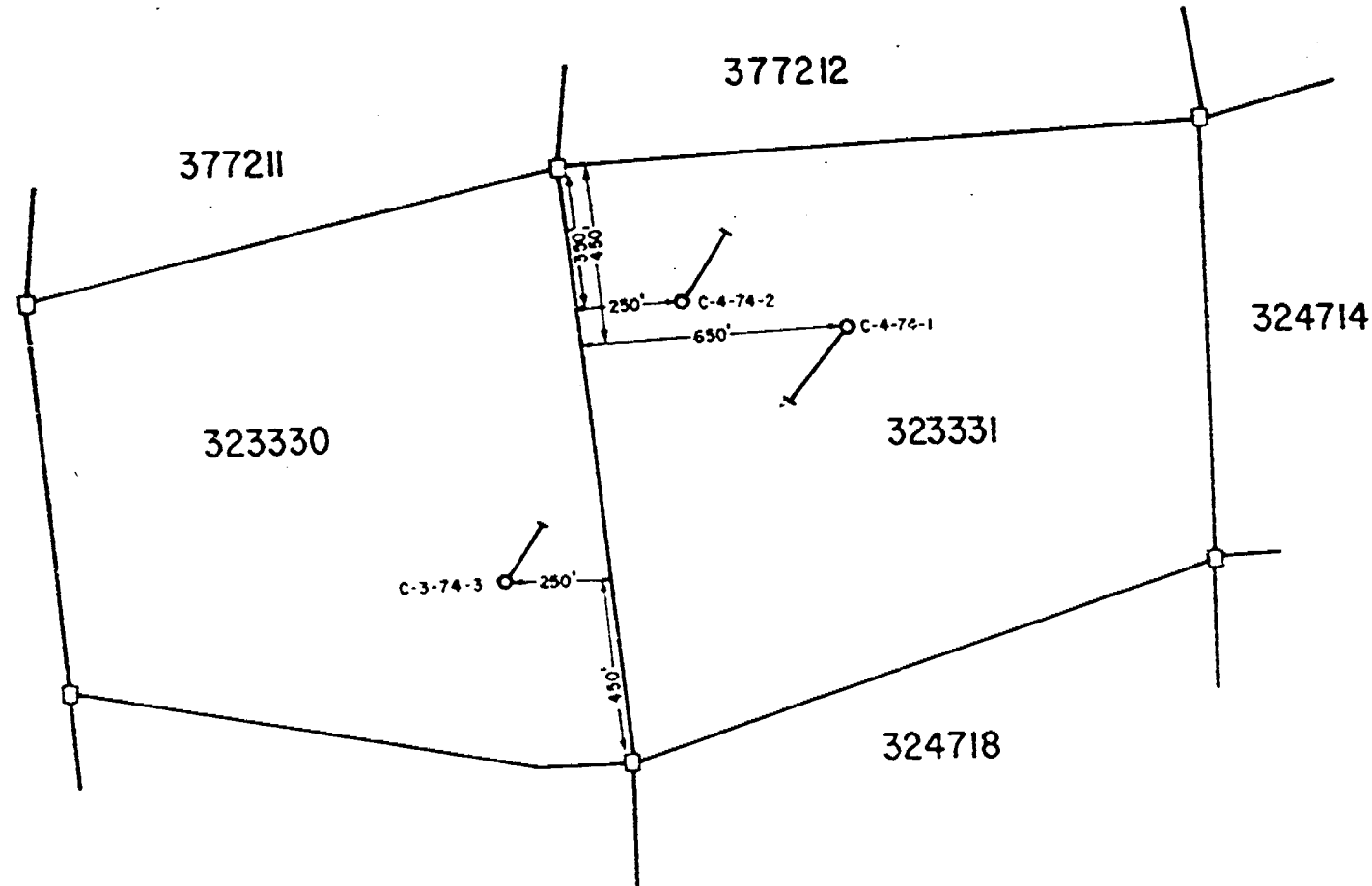
MATTAGAMI LAKE MINES LTD.  
EXPLORATION DIVISION  
PROJECT: CURTIN MINES  
SECTION: PLAN  
D.D.H.# C-1-74-6 & -7  
SCALE: 1" = 400 FEET  
DATE: NOV. 5, 1974 DRW. BY: -8-



MATTAGAMI LAKE MINES LTD.  
EXPLORATION DIVISION  
PROJECT: CURTIN MINES OPTION  
SECTION: B  
D.D.H.# C-3-74-3 & C-4-74-2  
SCALE: 1" = 100 FEET  
DATE: SEPT. 1974  
DRAWN BY:

4100 W

0100



MATTAGAMI LAKE MINES LTD.  
 EXPLORATION DIVISION  
 PROJECT: CURTIN MINES OPTION  
 SURFACE DRILL PLAN  
 D.D.H.#C-3-74-3, 4-74-1, 2  
 SCALE: 1" = 400' FEET  
 DATE: SEPT. 1974      DRW. BY:

KAE 9-70



M.863

# Foster Twp.-M.

## THE TOWNSHIP OF

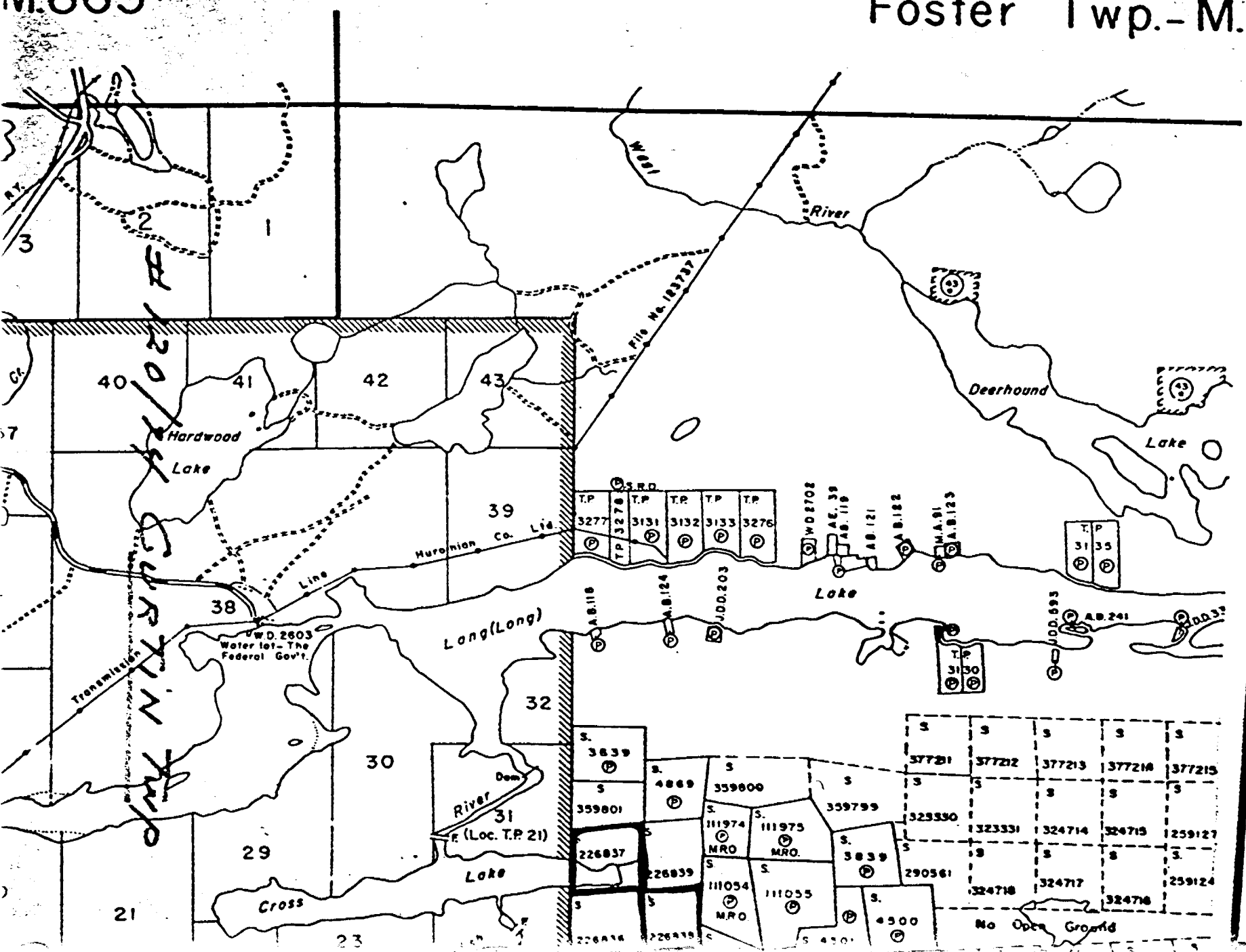
# CURTIN

AND AREA SOUTH OF  
DISTRICT OF  
SUDBURY  
and  
MANITOULIN  
SUDBURY  
MINING DIVISION

SCALE: 1-INCH = 40 CHAINS

### LEGEND

- PATENTED LAND ● or ⊙
- CROWN LAND SALE C.S.
- LEASES ⊙
- LOCATED LAND Loc.
- LICENSE OF OCCUPATION L.O.
- MINING RIGHTS ONLY M.R.O.
- SURFACE RIGHTS ONLY S.R.O.
- ROADS
- IMPROVED ROADS
- KING'S HIGHWAYS
- RAILWAYS
- POWER LINES
- MARSH OR MUSKEG
- MINES
- CANCELLED
- PATENTED S.R.O.



CURTIN TWP.