

Diamond Drilling



41104NW0038 0012B1 MONGOWIN

010

Township of MONGOWIN

Report NO: 14

Work performed by: Accra Explorations Limited

Claim NO	Hole NO	Footage	Date	Note
S 143947 (S 143948)	68-1	305'	July/68	(1)
	68-2	425'	July/68	(1)
	68-3	344'	July/68	(1)
	68-4	469'	July/68	(1)
	68-5	352'	July/68	(1)
	68-6	527'	Aug/68	(1)

Total 6 DH 2422'

Notes:

(1) For further information see File 63.3404

DIAMOND DRILL RECORD

PROPERTY ACCRA EXPLORATIONS LIMITED

HOLE NO. 68-1

SHEET NUMBER _____ SECTION FROM _____ TO _____ STARTED July 9, 1968
 LATITUDE 00+50N DATUM Geophysical Grid COMPLETED July 12, 1968
 DEPARTURE 7+50W BEARING 180° DEPTH 305
 ELEVATION _____ DIP -45°

DEPTH FEET	FORMATION	SAMP No.	FROM-TO	Cu %	Pb %	Zn %	Ag.oz/T	Au.oz/T	SPECIAL ANALYSIS	OTHER
0-11	CASING									
11-64.5	QUARTZITE: White to pinkish, fine grained to aphanitic, highly sil., occ. band of greywacke.									
64.5-140.9	AMPHIBOLITE: Typical, silicified, minor quartzite phases, some carbonization in fractures, few quartz stringers 2", pyrite at 136 and 137.									
			NOTE: ALL SAMPLES ARE 1 FT. SECTIONS CONTIGUOUS UNLESS OTHERWISE STATED							
		18						nil		
		17						nil		
		16						nil		
		15						nil		
140.9-143.8	QUARTZ: Vein material with minor argillite and some greywacke									
		1	(full section 2.9 ft.)					3.20		
		19						0.02		
		20						tr.		
		21						nil		
		22						nil		
143.8-154.8	ARGILLITE: Typical, minor greywacke, occ amount of pyrite									
154.8-156	QUARTZ: Vein material, minor argillite, fair pyrite mineral.									
		2	(full section 1.2 ft.)					Tr.		
156-198.8	GREYWACKE: Typical, fine-grained									
198.8-200.5	QUARTZ AND QUARTZITE									
		3	(full section 1.7 ft.)					Tr.		
200.5-225.5	GREYWACKE: (as 156-198.8)									
225.5-226.5	QUARTZ: Vein material, pyrite 10%									
		4						Tr.		

DRILLED BY CONTINENTAL DIAMOND DRILLING CO. LT.

SIGNED P. H. ...

DIAMOND DRILL RECORD

PROPERTY ACCRA EXPLORATIONS LIMITED HOLE NO. 68-1 Continued

SHEET NUMBER _____ SECTION FROM _____ TO _____ STARTED _____
 LATITUDE _____ DATUM _____ COMPLETED _____
 DEPARTURE _____ BEARING _____ DEPTH _____
 ELEVATION _____ DIP _____

DEPTH FEET	FORMATION	SAMP. No.	FROM-TO	CU %	Pb %	Zn %	Ag.oz/T	AU.oz/T	SPECIAL ANALYSIS	OTHER
226.5-239.6	GREYWACKE: Minor argillite									
239.6-241.7	QUARTZ: Minor greywacke and argillite, slight pyrite min.		5 (full section, 1.7 ft)					nil		
241.3-278.6	GREYWACKE: Minor diabase or amphibolite with inclusions of argillite and quartzite									
278.6-296.6	QUARTZ: Vein material with erratic dist. of pyrite									
END		6	2	(Continuous 2 ft. samples from 278.6 to 296.6)				tr.		
		7	2					nil		
		8	2					tr.		
		9	2					tr.		
		10	2					tr.		
		11	2					nil		
		12	2					tr.		
		13	2					tr.		
		14	2					tr.		
296.6-300	QUARTZITE-GREYWACKE									
300-304	LOST CORE									
304-305	QUARTZITE with minor quartz									

SIGNED: P. Holtby-Hume

DIAMOND DRILL RECORD

PROPERTY ACCRA EXPLORATIONS LIMITED

HOLE NO. 68-2

SHEET NUMBER _____

SECTION FROM _____ TO _____

STARTED July 13, 1968

LATITUDE 00+50N

DATUM Geophysical grid

COMPLETED July 17, 1968

DEPARTURE 7+50W

BEARING 180°

DEPTH 425

ELEVATION _____

DIP -60°

DEPTH FEET	FORMATION	SAMP No.	FROM-TO	CU %	Pb%	Zn%	Ag.oz/T	Au.oz/T	SPECIAL ANALYSIS	OTHER
0-8	CASING									
8-90	QUARTZITE: White to pinkish, fine-grained to aphanitic, highly sil. Minor amounts of greywacke									
90-156	GREYWACKE: Typical and fine-grained. grades into amphibolite									
156-232.2	AMPHIBOLITE: Typical, siliceous. More coarse-grained with dioritic texture about 225+									
232.5-235	QUARTZITE with QUARTZ:	1	2.5					nil		
235-238.2	ARGILLITE: minor quartz, brecciated at 237-8									
238.2-239.8	QUARTZITE: minor quartz	2	1.6					tr.		
239.8-260.3	ARGILLITE (As 235-238.2)									
260.3-262.8	QUARTZ: minor argillite	3	2.0					tr.		
262.3-271.6	ARGILLITE: occ. brecc.									
		9						tr.		
		8						tr.		
		7						0.01		
		6						0.01		
271.6-273	QUARTZ: minor argillite, slight pyrite	4	1.4					14.1		
		10						tr.		
		11						nil		
		12						tr.		
		13						tr.		

CONTINENTAL DIAMOND DRILLING CO. LTD.

SIGNED

P. H. M. Hume

DIAMOND DRILL RECORD

PROPERTY ACCRA EXPLORATIONS LIMITED

HOLE NO. 68-2 Con't

SHEET NUMBER _____ SECTION FROM _____ TO _____ STARTED _____

LATITUDE _____ DATUM _____ COMPLETED _____

DEPARTURE _____ BEARING _____ DEPTH _____

ELEVATION _____ DIP _____

DEPTH FEET	FORMATION	SAMP No.	FROM-TO	Cu %	Pb %	Zn %	Ag.oz/T	Au.oz/T	SPECIAL ANALYSIS	OTHER
273-328.5	ARGILLITE: major amounts of greywacke, occ. quartz stringers.									
328.5-381.2	QUARTZITE:									
381.2-382.5	QUARTZ: some greywacke	5	1.3					0.02		
382.5-410	QUARTZITE:									
410-425	GREYWACKE: Minor quartzite									
END										

DRILLED BY CONTINENTAL DIAMOND DRILLING CO. LTD.

SIGNED *P. H. H. H. H. H.*

DIAMOND DRILL RECORD

PROPERTY ACCRA EXPLORATIONS LIMITED

HOLE NO. 68-3

SHEET NUMBER _____

SECTION FROM _____ TO _____

STARTED July 20, 1968

LATITUDE 00+50N

DATUM Geophysical grid

COMPLETED July 23, 1968

DEPARTURE 7+00W

BEARING 180°

DEPTH 344

ELEVATION _____

DIP -45°

DEPTH FEET	FORMATION	SAMP N ₂	FROM-TO	Cu %	Pb %	Zn %	Ag oz/T	AL oz/T	SPECIAL ANALYSIS	OTHER
0-16	CASING									
16-63.5	QUARTZITE: White to pinkish, fine-grained to aphanitic. Highly sil.									
63.5-101.5	ANPHIBOLITE: Typical. Some dioritic phases.									
101.5-102.5	QUARTZ:	1	1.0					nil		
102.5-106	GREYWACKE:									
106.0-106.8	QUARTZ	2	0.8					nil		
106.8-110	GREYWACKE									
110-112	QUARTZ: minor argillite, some pyrite	3	2.0					nil		
112-113.8	QUARTZ: (as above)	4	1.8					nil		
113.8-124.5	GREYWACKE: minor quartzite									
124.5-126.3	QUARTZ:	5	1.8					0.01		
126.3-130	QUARTZITE with GREYWACKE									
130-131.9	QUARTZ: minor greywacke and argillite, minor pyrite	6	1.9					0.01		
131.9-138	GREYWACKE: minor argillite									
138-139	QUARTZ: minor greywacke	7	1.0					0.52		
139-145.9	GREYWACKE:									
145.9-147	QUARTZ: minor argillite and greywacke	8	1.3					nil		
147-148	GREYWACKE									
148-149.5	QUARTZ: minor greywacke and argillite	9	1.5					tr.		
149.5-155	GREYWACKE: Minor quartz									
155-157.2	QUARTZ: minor quartzite, some argillite	10	2.2					nil		
157.2-268	GREYWACKE: some argillite, quartz stringers									

DRILLED BY

CONTINENTAL DIAMOND DRILLING CO. LTD.

SIGNED

P. H. ...

DIAMOND DRILL RECORD

PROPERTY _____ HOLE NO. 68-3 cont'd

SHEET NUMBER _____ SECTION FROM _____ TO _____ STARTED _____
 LATITUDE _____ DATUM _____ COMPLETED _____
 DEPARTURE _____ BEARING _____ DEPTH _____
 ELEVATION _____ DIP _____

DEPTH FEET	FORMATION	SAMP No.	FROM-TO	Cu %	Pb %	Zn %	Ag.oz/T	Au.oz/T	SPECIAL ANALYSIS	OTHER
268-281	QUARTZITE: minor pyrite									
281-291	GREYWACKE: minor quartz at 283 and 285									
291- 292.3	QUARTZ, minor greywacke	11	1.3					nil		
292.3-300.7	QUARTZITE: major amounts of quartz									
300.7-302.7	QUARTZITE: major amounts of quartz	12	2.0					0.01		
302.7-304.7	(as above)	13	2.0					tr.		
304.7-322	QUARTZITE: minor greywacke in shatter zone									
322-323.5	QUARTZ: minor argillite	14	1.5					nil		
323.5-334	QUARTZITE: minor argillite and greywacke in shatter zone									
334-344	QUARTZITE: High pink in colour.									
END										

DRILLED BY _____ CONTINENTAL DIAMOND DRILLING CO. LTD.

SIGNED [Signature]

DIAMOND DRILL RECORD

PROPERTY ACCRA EXPLORATIONS LIMITED

HOLE NO. 68-4

SHEET NUMBER _____

SECTION FROM _____ TO _____

STARTED July 23, 1968

LATITUDE 00+50N

DATUM Geophysical grid

COMPLETED July 27, 1968

DEPARTURE 7+00W

BEARING 180°

DEPTH 469

ELEVATION _____

DIP -60°

DEPTH FEET	FORMATION	SAMP. No.	FROM-TO	Cu %	Pb %	Zn %	Ag.oz/T	Au.oz/T	SPECIAL ANALYSIS	OTHER
0-18	CASING									
18-91	QUARTZITE: with GREYWACKE, minor quartz stringers									
91-185.2	AMPHIBOLITE: lost core: 118.4-120 minor greywacke inclusions									
185.2-186.9	QUARTZ: minor greywacke	1	1.7					nil		
186.9-316.5	GREYWACKE: with ARGILLITE minor quartz, minor pyrite									
316.5-319	QUARTZ with QUARTZITE:	2	2.5					0.01		
319-322	GREYWACKE: minor argillite									
322-323.3	ARGILLITE with GREYWACKE, 50% quartz	3	1.3					nil		
323.3-370	QUARTZITE: impure with major amounts of argillite and greywacke. High pink quartzite at 340.									
370-385	GREYWACKE: 40% quartzite									
385-469	QUARTZITE: high pink, minor scattered quartz stringers, minor greywacke at 401-404, 458-460									
END										

DRILLED BY CONTINENTAL DIAMOND DRILLING CO. LTD.

SIGNED P. H. M. Hume

DIAMOND DRILL RECORD

PROPERTY ACCRA EXPLORATIONS LIMITED

HOLE NO. 68-5

SHEET NUMBER _____
 LATITUDE 00+50N
 DEPARTURE 8+00W
 ELEVATION _____

SECTION FROM _____ TO _____
 DATUM Geophysical grid
 BEARING 180°
 DIP -45°

STARTED July 28, 1968
 COMPLETED Aug. 3, 1968
 DEPTH 352

DEPTH FEET	FORMATION	SAMP. No.	FROM-TO	Cu %	Pb %	Zn %	Ag.oz/T	Au.oz/T	SPECIAL ANALYSIS	OTHER
0-12	CASING									
12-54	QUARTZITE: impure, 40% greywacke. Minor amounts of amphibolite near bottom of section									
54-55.4	QUARTZ: 50% greywacke	1	1.4					nil		
55.4-58	GREYWACKE: minor quartzite, slight pyr.									
58-60	QUARTZ: some greywacke	2	2.0					0.01		
60-61.5	QUARTZ: (as above) minor pyr.	3	1.5					nil		
61.5-94	QUARTZITE: minor greywacke lost core 91-99. Some argillite bands mixed with greywacke, blocky ground									
94-232.7	GREYWACKE: with minor quartzite, minor quartz stringers lost core 147-149.5									
232.7-280	QUARTZITE: minor quartz stringers, some brecciation									
280-286	QUARTZ: minor quartzite and greywacke	4	2					tr.		
		5	2					tr.		
		6	2					0.01		
286-287.5	GREYWACKE: 40% argillite									
287.5-289.5	QUARTZ: veins material with minor greywacke	7	2.0					tr.		
289.5-294	GREYWACKE: altered									
294-296	QUARTZ: vein, minor greywacke	8	2.0					tr.		
296-298	QUARTZ: (as above)	9	2.0					nil		

DRILLED BY CONTINENTAL DIAMOND DRILLING CO. LTD.

SIGNED P. H. Hume

DIAMOND DRILL RECORD

PROPERTY ACCRA EXPLORATIONS LIMITED

HOLE NO. 68-5 cont'd

SHEET NUMBER _____ SECTION FROM _____ TO _____ STARTED _____

LATITUDE _____ DATUM _____ COMPLETED _____

DEPARTURE _____ BEARING _____ DEPTH _____

ELEVATION _____ DIP _____

DEPTH FEET	FORMATION	SAMP No.	FROM-TO	Cu %	Pb %	Zn %	Ag.oz/T	Au.oz/T	SPECIAL ANALYSIS	OTHER
298-324.5	GREYWACKIE: 40% argillite									
324.5-326.5	QUARTZ: 40% quartzite mixture, sl. pyr. min.	10	2.0					0.01		
326.5-332	QUARTZITE:									
332-352	GREYWACKIE:									
END										

SIGNED P. Holtby-Hum

DIAMOND DRILL RECORD

PROPERTY ACCRA EXPLORATIONS LIMITED

HOLE NO. 68-6

SHEET NUMBER _____

SECTION FROM _____ TO _____

STARTED Aug. 3, 1968

LATITUDE 00+50N

DATUM Geophysical grid

COMPLETED Aug. 6, 1968

DEPARTURE 8+00W

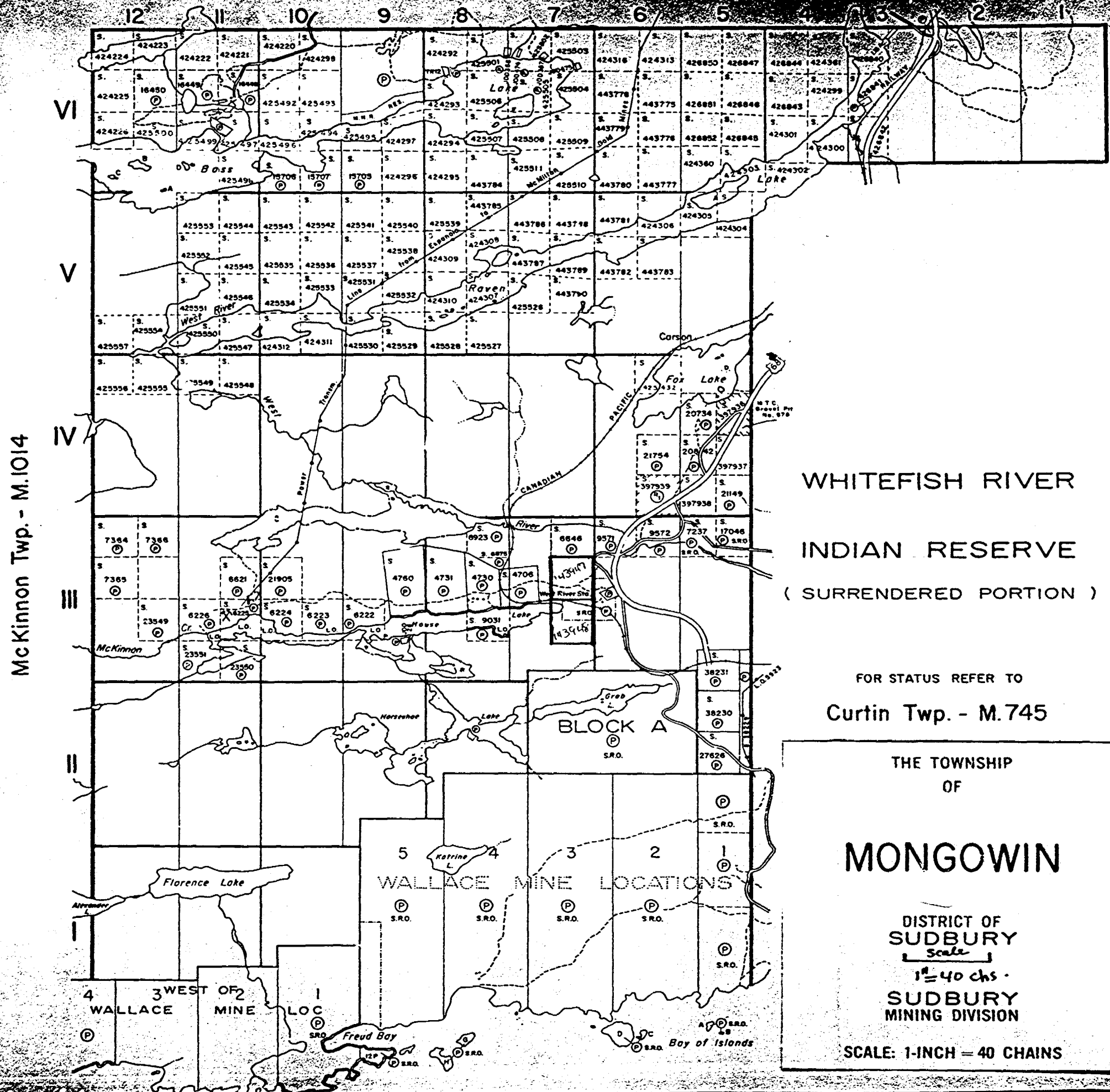
BEARING 180°

DEPTH 527

ELEVATION _____

DIP -45°

DEPTH FEET	FORMATION	SAMP No.	FROM-TO	Cu %	Pb %	Zn %	Ag.oz/T	Au.oz/T	SPECIAL ANALYSIS	OTHER
0-11	CASING									
11-118	QUARTZITE: White to pinkish with minor amounts of greywacke									
118-253.5	GREYWACKE: impure with up to 40% quartzite, minor argillite in places. Possible amphibolite from 226-250.1									
253.5-283	QUARTZITE: amphibolite and/or dioritic material									
283-312	GREYWACKE: brecciation at 284-5									
312-397	QUARTZITE: minor quartz stringers.									
397-411	QUARTZ: vein material but impure in many places. Very slight pyr. in places	1	2					0.02		
		2	2					tr.		
		3	2					tr.		
		4	2					0.01		
		5	2					tr.		
		6	2					tr.		
		7	2					nil		
411-421	GREYWACKE: minor quartz.									
421-498	QUARTZITE: high pink, lost core 433-444 slight min. scattered throughout.									
498-527	GREYWACKE: 30-40% argillite, minor quartz stringers									
END										



McKinnon Twp. - M.1014

WHITEFISH RIVER
 INDIAN RESERVE
 (SURRENDERED PORTION)

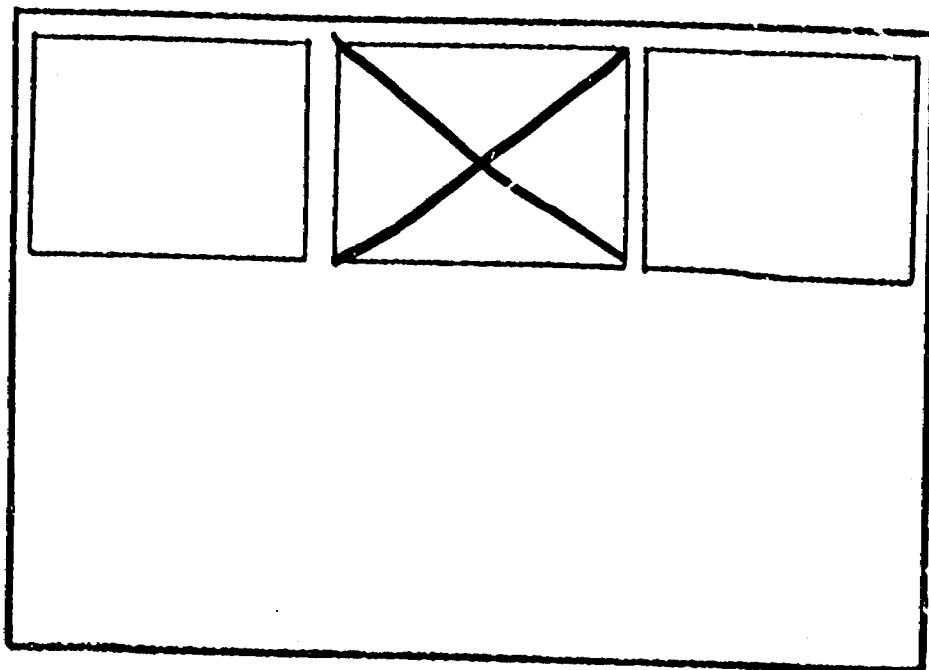
FOR STATUS REFER TO
 Curtin Twp. - M.745

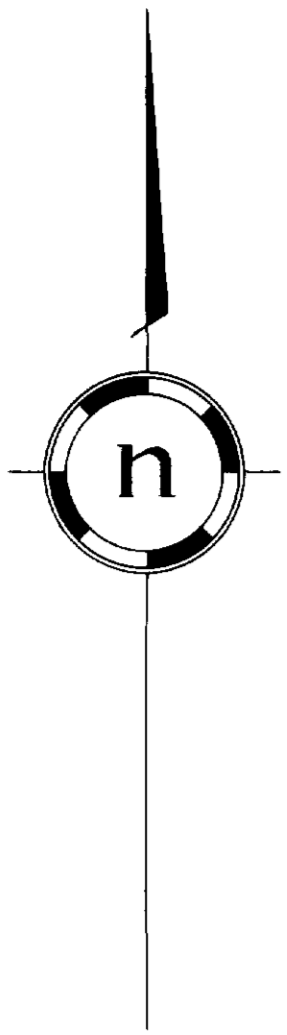
THE TOWNSHIP
 OF
MONGOWIN
 DISTRICT OF
 SUDBURY
 Scale
 1" = 40 chs.
 SUDBURY
 MINING DIVISION
 SCALE: 1-INCH = 40 CHAINS

SEE ACCOMPANYING
MAP(S) IDENTIFIED AS

MON GOWIN - 0012 - BI #1

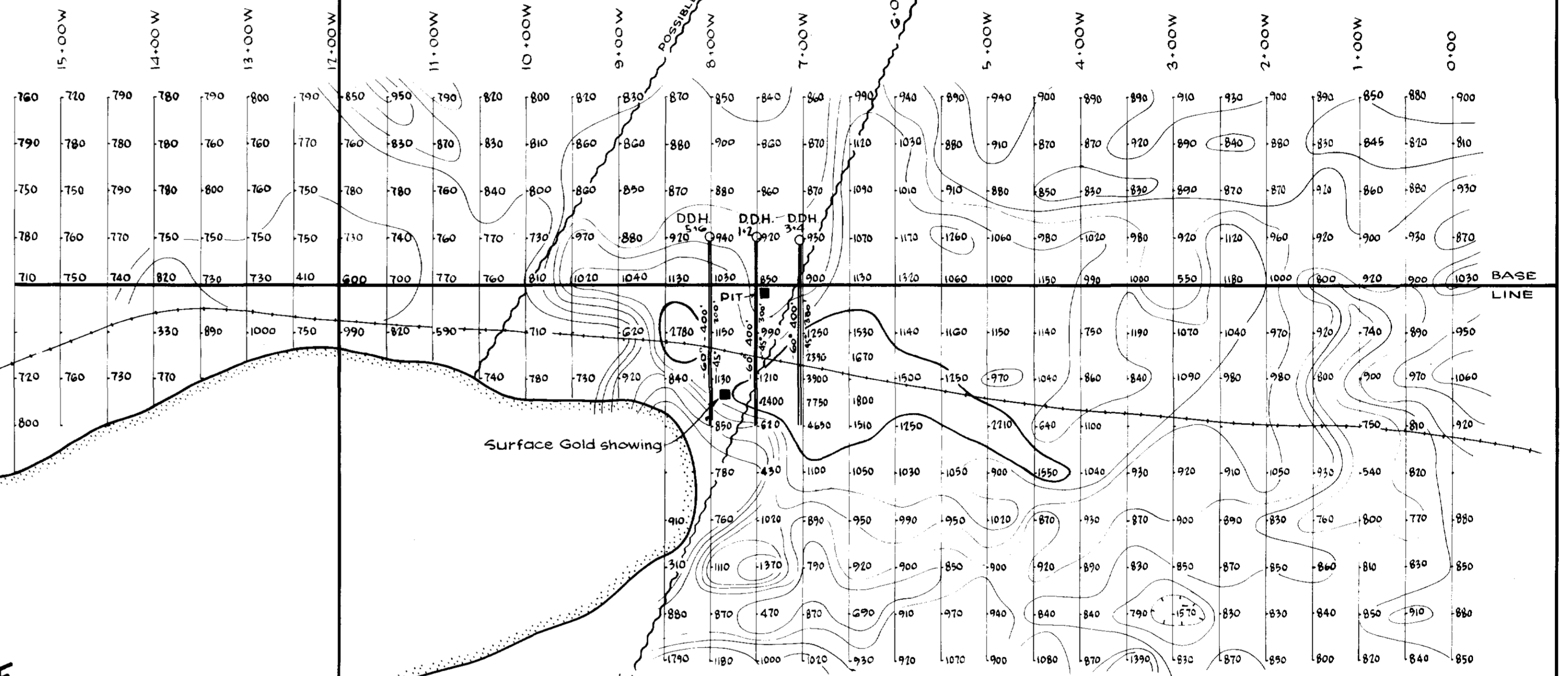
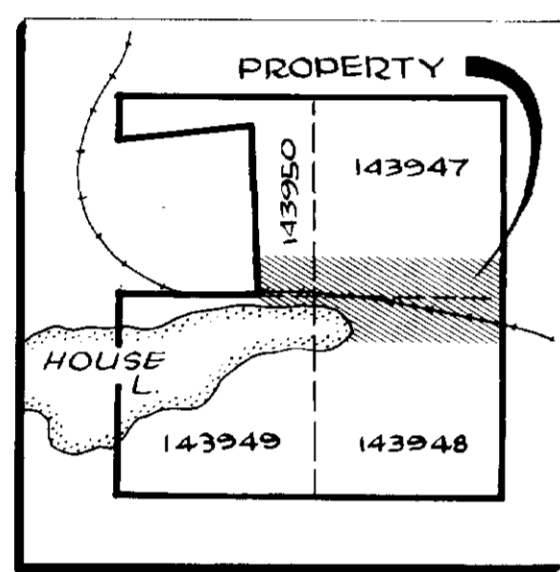
LOCATED IN THE MAP
CHANNEL IN THE FOLLOWING
SEQUENCE (X)





143950

143947

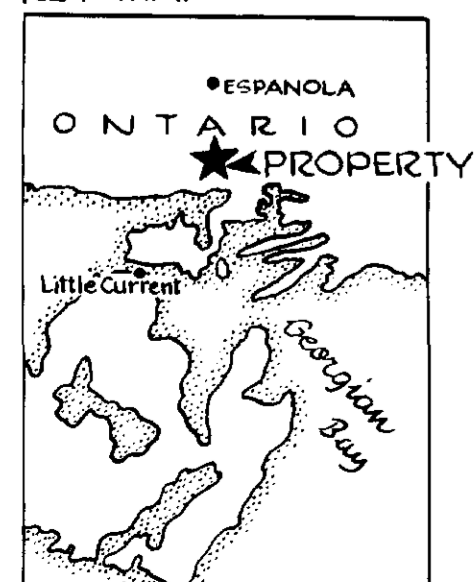


HOUSE LAKE

143949

143948

KEY MAP



- Measurement station along picket line
- 1013 Relative value of the vertical component of the earth's magnetic field in gammas
- Magnetic Contour 50 gamma interval up to 1000 gammas Over 1500 gammas
- Magnetic depression
- INSTRUMENT SHARPE MF-1 FLUXGATE MAGNETOMETER
- Proposed drill location

ACCRA EXPLORATION LIMITED
MONGOWIN TOWNSHIP, SUBURRY MIN DIV., ONTARIO.

**MAGNETOMETER SURVEY
& DRILL LOCATION MAP**

ADVANCE GEOLOGY & GEOPHYSICS LTD.
TORONTO CANADA



Handwritten signature or initials.