

Diamond Drilling

Township KILLARNEY

Report NO 13

Work performed by: INDUSMIN LTD.

Claim NO	Hole NO	Footage	Date	Note
S 626361	85-B-4	592'	May-June/85	(1)
	85-B-5	573'	June/85	(1)
S 626362	85-C-1	652'	May-June/85	(1)
TOTAL		3 DH	1817 FT	

Notes: (1) #85-65

33-7-84

INDUSMIN LIMITED

DIAMOND DRILL LOG

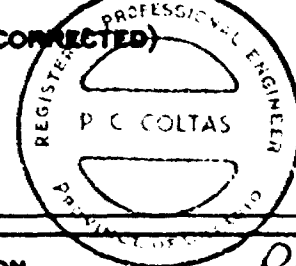
LOCATION S-626361-1; 590'S, 590'W BEARING N-40°E HOLE NO. 85-B-4
 LOGGED BY P.C. Coltas ELEVATION _____ DIP -30° PROPERTY Fraser Bay Hill
 STARTED May 1985 TESTS (CORRECTED) 575' - 18°
 FINISHED June 1985 Recovery 86%
 CASING 4.0' All bearings relate to
 magnetic north
 CORE SIZE AXT

FROM	TO	DESCRIPTION
0.0'	152.5'	White quartzite with sections of light buff sandstone. 0.0' - 18.0' Quartzite 50% white 50% light buff. 18.0' - 55.0' White to light grey quartzite, minor sericite schist on fractures. 54.2' 1/4" to 1/2" sericite schist. 55.0' - 76.3' White quartzite and light buff sandstone. 76.3' - 150.1' White quartzite, minor sericite schist on fractures. 86.3' heavy Fe stained fracture, minor sulphides. 150.1' - 152.5' Quartzite, red stained, contact zone with lamprophyre dyke.
152.5'	156.2'	Lamprophyre dyke 152.5' - 154.8' Lamp dyke 154.8' - 156.2' Quartzite 3% sulphides and 10% lamp dyke. Contact \pm 30° to core axis.
156.2'	450.0'	White to light buff quartzite 156.2' - 159.5' White quartzite, minor staining on fractures, minor occasional pyrite grains. 159.5' - 169.0' Sericite schist & quartzite. 169.0' - 173.5' Buff sandstone, red staining minor sulphides. 173.5' - 210.4' White to light grey quartzite. Minor narrow sections 1" to 4" of light buff sandstone.

11-7-44

INDUSMIN LIMITED**DIAMOND DRILL LOG**

LOCATION _____ BEARING _____ HOLE NO. 85-B-4
 LOGGED BY _____ ELEVATION _____ DIP _____ PROPERTY _____
 STARTED _____ TESTS (CORRECTED) _____
 FINISHED _____
 CASING _____
 CORE SIZE _____



FROM	TO	DESCRIPTION
156.2'	450.0'	210.4' - 244.4' White to light grey quartzite, minor light buff sandstone sections. 244.4' - 245.5' Sericite schist. 245.5' - 326.3' White to light grey, minor light buff sandstone sections, minor sericite schist on fractures. 263.5' - 266.0' Sericite schist & quartzite 326.3' - 334.7' Sericite schist and quartzite. 334.7' - 450.0' White to light grey quartzite. 420' to 440' badly fractured, parallel fractures, poor recovery. Minor areas of sandstone.
450.0'	460.0'	Lamprophyre dyke and red stained quartzite.
460.0'	492.0'	Light grey to white quartzite, minor light buff areas of sandstone.
492.0'	494.0'	Lamprophyre dyke.
494.0'	542.5'	White to light grey quartzite, minor light buff sandstone sections.
542.5'	552.0'	Sericite schist and quartzite.
552.0'	591.0'	White to light grey quartzite. Minor sericite schist on fractures.
		578.0' - 584.0' Minor sulphides, area covered with unidentified black material. Core clean, mud on core from mud seam at 591' to 592'.
591.0'	592.0'	Mud seam
	592.0'	End of Hole.

P.C. Coltas

INDUSMIN LIMITED

DIAMOND DRILL LOG

LOCATION S-626361-1; 850'S, 380'W BEARING N 40°E HOLE NO. 85-B-5
 LOGGED BY P.C. Coltas ELEVATION - DIP -30° PROPERTY Fraser Bay Hill
 STARTED June 1985 TESTS (CORRECTED) 500' - 24°
 FINISHED June 1985 Recovery = 85%
 CASING 4.0' All bearings relate to
 CORE SIZE AXT magnetic north

FROM	TO	DESCRIPTION
0.0'	17.0'	White quartzite, very minor sandy sections.
17.0'	30.2'	Sericite schist, minor short sections of quartzite.
30.2'	386.7'	Quartzite, white to light grey, minor light buff sandstone sections 6" to 2'. Minor sericite schist on fractures.
		30.2' - 87.2' White quartzite, very minor light buff sandstone sections. 32' - 1" of dark material, magnetite with limestone -?
		87.2' - 87.6' Sericite schist
		87.6' - 92.0' White quartzite
		92.0' - 95.7' Light buff sandstone
		95.7' - 170.1' White quartzite, occasional sericite schist on fractures, not enough to affect Al ₂ O ₃ .
		170.1' - 175.6' Dark grey quartzite, no visible sulphides, high Fe ₂ O ₃ of Al ₂ O ₃ .
		175.6' - 358.0' White to light buff quartzite, minor sericite schist on fractures. Occasional areas of sand.
		315' - 4' lost, too soft to core. 340' - 8' lost, too soft to core.
		357.0' - 358.0' Sericite schist
		358.0' - 386.7' White to light grey quartzite, minor sericite schist on fractures.
		362.8' - 363.1' Sericite schist

18-7-64

INDUSMIN LIMITED**DIAMOND DRILL LOG**LOCATION _____ BEARING _____ HOLE NO. 85-B-5

LOGGED BY _____ ELEVATION _____ DIP _____ PROPERTY _____

STARTED _____ TESTS (CORRECTED) _____

FINISHED _____

CASING _____

CORE SIZE _____

FROM	TO	DESCRIPTION
386.7'	408.5'	Lamprophyre dyke, very weak, 80% quartzite, 20% limonite, hematite, high $Fe_2O_3 + Al_2O_3$.
408.5'	573.0'	White to light buff quartzite, very uniform. Very minor sericite schist on fractures.
		500' to 555' Lots of mud on core and in box, probably a few small mud seams.
	573'	End of Hole.
		Hole lost due to sand in bottom of hole. Sand comes from numerous sandy sections.

35-7-64

INDUSMIN LIMITED**DIAMOND DRILL LOG**LOCATION _____ BEARING _____ HOLE NO. 85-B-5

LOGGED BY _____ ELEVATION _____ DIP _____ PROPERTY _____

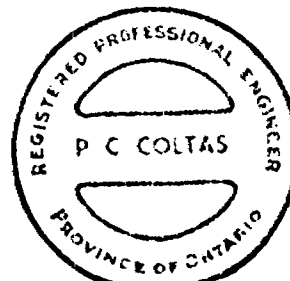
STARTED _____ TESTS (CORRECTED) _____

FINISHED _____

CASING _____

CORE SIZE _____

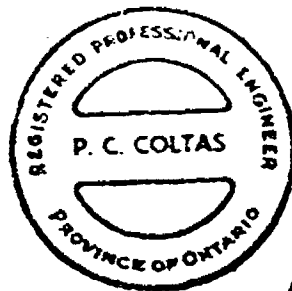
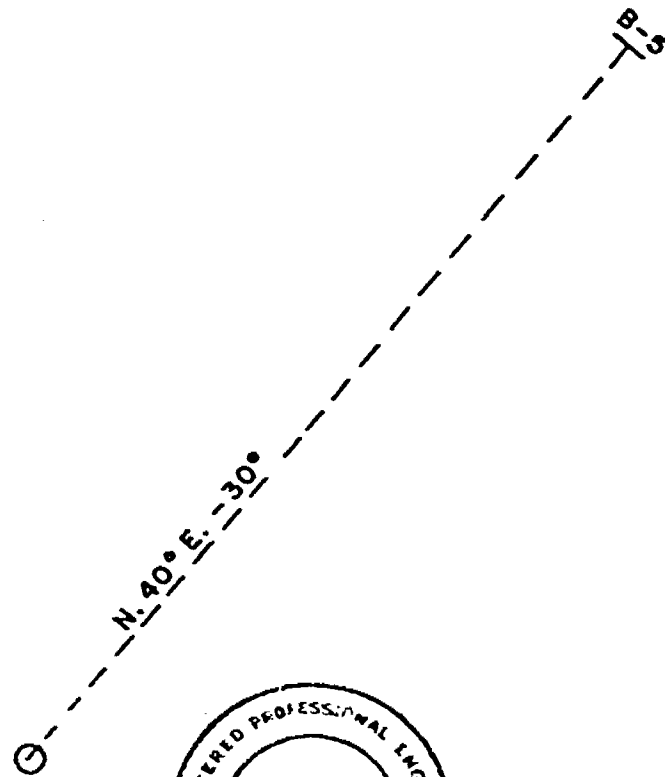
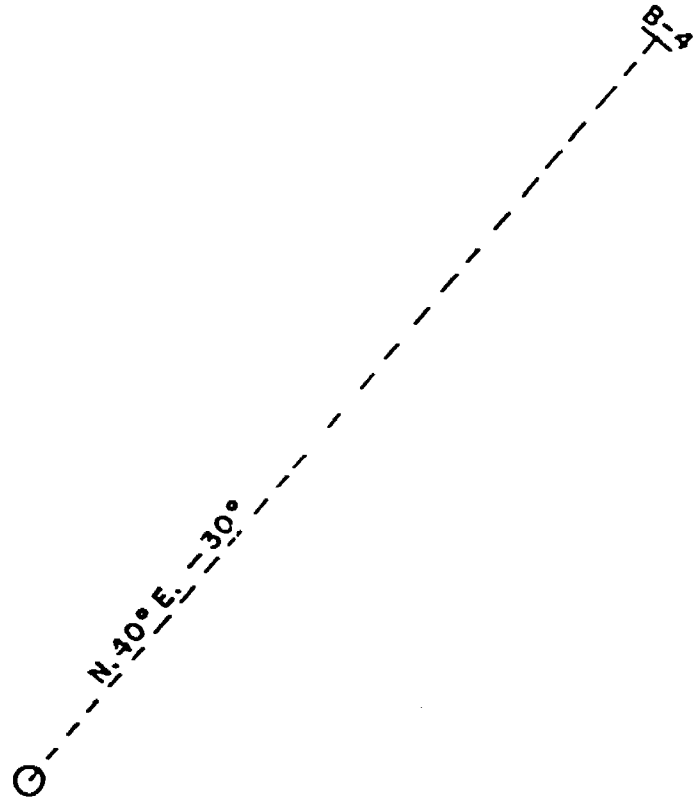
FROM	TO	DESCRIPTION
		Ground and lost core.
		FOOTAGE CORE LOST
		16' 0.5'
		33' 0.5'
		38' 1.0'
		67' 0.5'
		107' 1.5'
		111' 0.5'
		145' 1.0'
		185' 1.0'
		190' 1.5'
		198' 2.0'
		218' 1.0'
		224' 3.5'
		239' 4.0'
		257' 0.5'
		275' 0.5'
		315' 4.0'
		320' 2.0'
		325' 1.5'
		330' 2.0'
		340' 8.0'
		345' 3.5'
		348' 1.0'
		355' 1.5'
		370' 0.5'
		375' 0.5'
		380' 2.0'
		385' 1.5'



P. C. Coltas

S-626361-1

N (mag.)



P. C. Coltas

INDUSMIN division of Falconbridge Limited
FRASER BAY HILL CLAIMS
Killarney & Rutherford Townships District of Manitoulin Diamond Drill Hole No. B-4&B-5 July 1985 Scale 1"=100' P.C. Coltas

33-7-84

INDUSMIN LIMITED**DIAMOND DRILL LOG**

LOCATION S-626362-2; 345' N. 445' W BEARING N-55°W HOLE NO. 85-C-1
 LOGGED BY P. C. Coltas ELEVATION - DIP -30° PROPERTY Fraser Bay Hill
 STARTED May 1985 TESTS (CORRECTED) = 642' -25°
 FINISHED June 1985 Recovery = 88%
 CASING 2.0' All bearings relate
 CORE SIZE AXT to Magnetic North

FROM	TO	DESCRIPTION
0.0'	652.0'	Quartzite, white to light buff, minor sandy sections, minor areas of vugs. Some secondary silica.
		0.0' - 160.0' Good white to light buff quartzite only minor sericite schist on fractures. Very uniform with no sign of sulphides.
		160.0' - 231.0' White to light grey quartzite, minor sericite schist on fractures. Good material.
		231.0' - 286.0' White quartzite, minor sericite schist on fractures.
		286.0' - 321.0' White to light grey, possible very minor sulphides.
		321.0' - 342.4' White to light buff, very uniform.
		342.4' - 344.3' Sericite schist and quartzite.
		344.3' - 352.0' Light grey quartzite, probably a little high in Al_2O_3 .
		352.0' - 353.9' Sericite schist.
		353.9' - 433.9' White - light grey to light buff quartzite, areas of light buff material with sandy (vugs) sections. Minor sericite schist on fractures.
		433.9' - 434.5' Sericite schist.
		434.5' - 436.2' Light grey to grey quartzite, high Al_2O_3 .

35-7-64

INDUSMIN LIMITED**DIAMOND DRILL LOG**

LOCATION _____ BEARING _____ HOLE NO. 85-C-1

LOGGED BY _____ ELEVATION _____ DIP _____ PROPERTY _____

STARTED _____ TESTS (CORRECTED) _____

FINISHED _____

CASING _____

CORE SIZE _____

FROM	TO	DESCRIPTION
0.0'	652.0'	436.2' - 437.5' Light grey quartzite, numerous sericite schist covered fractures.
		437.5' - 515.9' Light grey to light buff quartzite. Very poor recovery from 445' to 491', only 22' recovered of 46'.
		515.9' - 522.6' Buff quartzite, with sandy sections, 65% quartzite to 35% sandstone, poor recovery - 445' to 491', could be sandstone too soft to core -?
		522.6' - 523.0' Sericite schist
		523.0' - 538.0' White to light grey quartzite, minor 1/4" to 1/2" sericite schist on fractures.
		538.0' - 539.2' Sericite schist.
		539.2' - 544.0' White to light buff quartzite.
		544.0' - 546.5' Sericite schist
		546.5' - 556.0' Red quartzite, minor sulphides, high Al_2O_3 . (551.5' - 556.0' quite high in Al_2O_3).
		556.0' - 585.5' White to light grey quartzite, good material.
		585.5' - 586.9' Sericite schist.
		586.9' - 652.0' White to light grey and light buff quartzite. Very minor sericite schist on fractures.
		652.0' End of Hole.

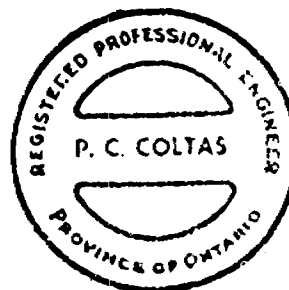
33-7-44

INDUSMIN LIMITED

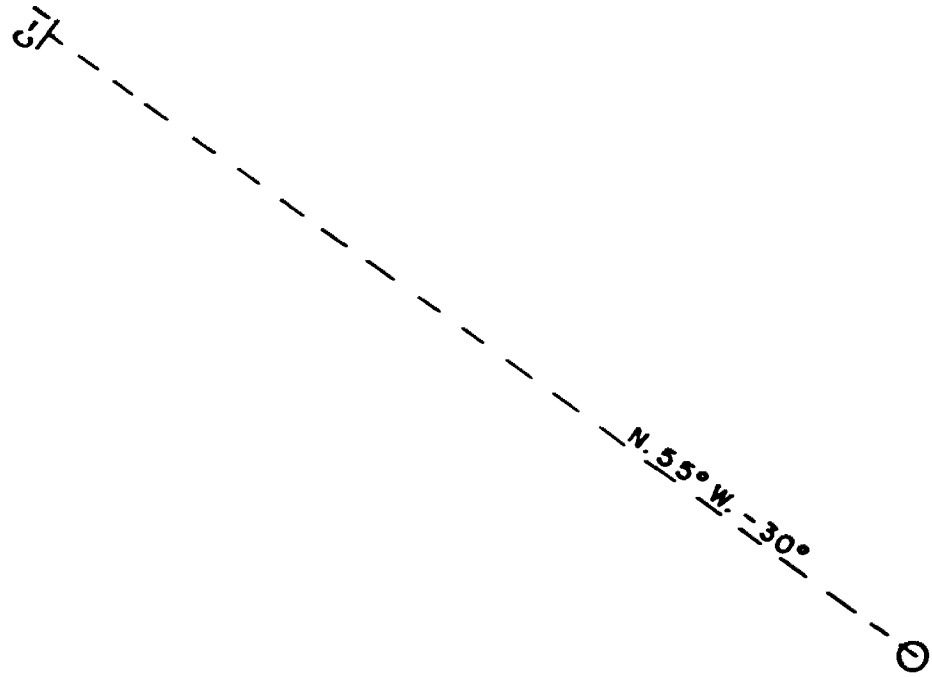
DIAMOND DRILL LOG

LOCATION _____ BEARING _____ HOLE NO. 85-C-1
 LOGGED BY _____ ELEVATION _____ DIP _____ PROPERTY _____
 STARTED _____ TESTS (CORRECTED) _____
 FINISHED _____
 CASING _____
 CORE SIZE _____

FROM	TO	DESCRIPTION																								
		<p>Use of plastic footage markers in this hole was a mistake. A great many were not legible, so ground core information difficult to establish.</p> <p>Information on ground or lost core.</p> <table data-bbox="812 978 1218 1404"> <thead> <tr> <th>FEET</th> <th>CORE LOST</th> </tr> </thead> <tbody> <tr><td>340'</td><td>1.0'</td></tr> <tr><td>386'</td><td>2.0'</td></tr> <tr><td>431'</td><td>1.0'</td></tr> <tr><td>446'</td><td>1.0'</td></tr> <tr><td>451'</td><td>1.5'</td></tr> <tr><td>456'</td><td>3.5'</td></tr> <tr><td>468'</td><td>3.5'</td></tr> <tr><td>476'</td><td>2.5'</td></tr> <tr><td>491'</td><td>12.0'</td></tr> <tr><td>501'</td><td>3.0'</td></tr> <tr><td>506'</td><td>1.0'</td></tr> </tbody> </table>	FEET	CORE LOST	340'	1.0'	386'	2.0'	431'	1.0'	446'	1.0'	451'	1.5'	456'	3.5'	468'	3.5'	476'	2.5'	491'	12.0'	501'	3.0'	506'	1.0'
FEET	CORE LOST																									
340'	1.0'																									
386'	2.0'																									
431'	1.0'																									
446'	1.0'																									
451'	1.5'																									
456'	3.5'																									
468'	3.5'																									
476'	2.5'																									
491'	12.0'																									
501'	3.0'																									
506'	1.0'																									



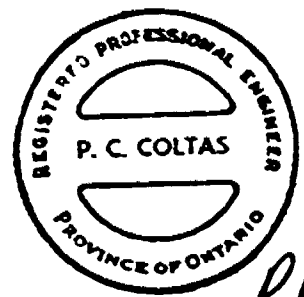
P. C. Coltas



N(mag.)



S-626362-2



P. C. Coltas

INDUSMIN division of Falconbridge Limited
FRASER BAY HILL CLAIMS
Killarney & Rutherford Townships District of Manitoulin Diamond Drill Hole No. C-1 July 1985 Scale 1"=100' P.C. Coltas

#85-65



Ministry of Natural Resources

Report of Work

KILLARNEY TWP. (M-969) Mining Act

Instructions

FILE S-626361 - Supply required data on a separate form for each type of work to be recorded (see table below). - For Geo-technical work use form no. 1362 "Report of Work (Geological, Geophysical, Geochemical and Expenditures)".

Name and Postal Address of Recorded Holder: INDUSMIN LIMITED, P.O. Box 40, Commerce Court West, Toronto, Ontario, M5L 1B4. Prospector's Licence No.

Summary of Work Performance and Distribution of Credits

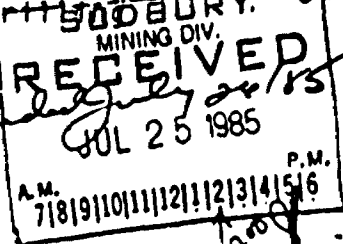
Table with columns: Total Work Days Cr. claimed (1709), Mining Claim Prefix/Number, Work Days Cr. for various work types (Manual, Shaft Sinking, etc.)

All the work was performed on Mining Claim(s): 626361 and 626362. WORK 655760

Required Information eg: type of equipment, Names, Addresses, etc. (See Table Below) S-626361 = 1086, Bal. 25; S-626362 = 512, Bal. 243

Work performed by: Eastern Ontario Diamond Drilling Co. Ltd., 28310 Lake, Ontario

No of Holes: 26, 1985; Total footage: 1817'; Date drilled: May to June



See attached logs for diameter or core angle of holes, hole length etc. See attached map for location of holes relative to claim boundaries. The remaining 108 days credits will be retained for future allocation.

TOTAL CREDITS = 1817; CREDITS APPLIED (REPORT #85-66) = 1709; CREDITS REMAINING = 108

Date of Report: July 16, 1984; Recorded Holder or Agent (Signature)

Certification Verifying Report of Work

I hereby certify that I have a personal and intimate knowledge of the facts set forth in the Report of Work annexed hereto having performed the work or witnessed same during and/or after its completion and the annexed report is true.

Name and Postal Address of Person Certifying: Tony Masciotra, INDUSMIN Ltd, P.O. Box 40, 40 Commerce Court West, Toronto, Ontario, M5L 1B4. Date Certified: July 16, 1984

Table of Information/Attachments Required by the Mining Recorder

Table with columns: Type of Work, Specific information per type, Other information (Common to 2 or more types), Attachments