

DIAMOND DRILLING



41104SE0004 0013A1 KILLARNEY

010

TOWNSHIP: Killarney

REPORT No.: 12

WORK PERFORMED BY: Indusmin Ltd.

<u>CLAIM No.</u>	<u>HOLE No.</u>	<u>FOOTAGE</u>	<u>DATE</u>	<u>NOTE</u>
S 626359	A-1	500	June/83	(1)
	A-2	351	June/83	(1)
	A-3	402	July/83	(1)
	A-4	200	July/83	(1)
S 626361	B-1	477	June/83	(1)
	B-2	251	June/83	(1)
	B-3	250	July/83	(1)

TOTAL: 7 DH 2431 FT

NOTES: (1) #102-83

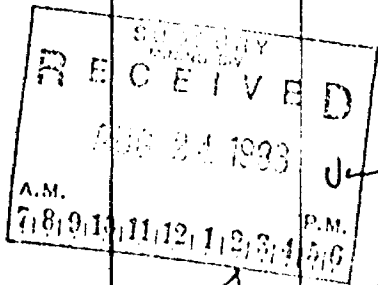
33-7-14

INDUSMIN LIMITED

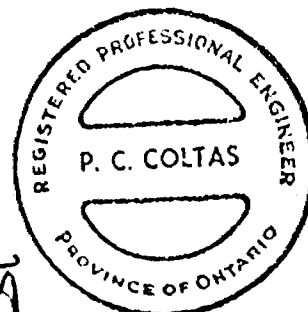
DIAMOND DRILL LOG

LOCATION S-626359-3; 380 N. 560 E. BEARING N.40° W. HOLE NO. A-1
 LOGGED BY P.C. Coltas ELEVATION - DIP -28° PROPERTY Frazer Bay Hill Claims
 STARTED June, 1983 TESTS (CORRECTED)
 FINISHED June, 1983 Recovery 91%
 CASING 3.0' All bearings relate to magnetic north
 CORE SIZE AXT.

FROM	TO	DESCRIPTION
0.0'	3.0'	Casing
3.0'	500.0'	<p>White fine to medium grained Quartzite, 2 to 3 fractures per foot, fractures 40 to 45° core axis. Minor iron, staining on some fractures.</p> <p>43.5' very thin ½" of amphibolite on fracture, 25° to core axis.</p> <p>81.5' vug - dark stained, magnetite - ?</p> <p>113.2' - ½" sericite schist.</p> <p>118.7' - thin skin sericite schist on fracture.</p> <p>122.1' - 122.8' ground core - fracture.</p> <p>143.5'-144.3' ground core - fracture.</p> <p>170.0'-182.9' area of staining, buff to light grey quartzite, vuggy areas, one nearly every foot, possible minor iron contamination, minor visible sulphides.</p> <p>182.9'-204.2' white quartzite, no contamination - 203.5' 1/8" sericite schist.</p> <p>204.2'-209.3' light grey quartzite, vugs every two feet, minor sulphides.</p> <p>209.3'-228.5' white quartzite, no contamination.</p> <p>228.5' - thin skin of sericite schist.</p> <p>228.5-232.5' white to very light grey quartzite.</p> <p>232.5'-233.2' sericite schist.</p> <p>233.2'-238.7' light grey quartzite, minor occasional vugs.</p>



P. C. Coltas



DIAMOND DRILL LOG

LOCATION _____ BEARING _____ HOLE NO. A-1
 LOGGED BY _____ ELEVATION _____ DIP _____ PROPERTY _____
 STARTED _____ TESTS (CORRECTED) _____
 FINISHED _____
 CASING _____
 CORE SIZE _____

FROM	TO	DESCRIPTION
3.0'	500.0'	238.7'-239.8' ground core - fracture. 239.8'-241.5' light grey to white quartzite. 241.5'-243.1' ground core - fracture. 243.1'-246.5' white quartzite. 246.5'-247.8' Vugs - minor sulphides. 247.8'-253.5' White quartzite. 253.5'-254.5' ground core - fracture. 254.5'-267.8' white to light grey quartzite, minor vugs, very minor sulphides. 267.8'-268.5' ground core - fracture. 268.5'-273.5' white quartzite. 273.5'-274.8' iron stained fracture, 10° to core axis. 274.8'-278.4' white quartzite. 278.4'-279.3' ground core - fracture. 279.3'-284.0' white quartzite. 284.0'-285.0' ground core - fracture. 285.0'-287.1' white quartzite. 287.1'-287.9' ground core - fracture. 287.9'-290.0' white quartzite, crumbled core. 290.0'-292.3' light to medium grey quartzite, minor sericite schist, minor sulphides 292.3'-357.0' white quartzite, competent, only one fracture or less per foot. 357.0'-358.0' ground core. 358.0'-359.2' white quartzite. 359.2'-360.0' ground core.

INDUSMIN LIMITED

DIAMOND DRILL LOG

LOCATION _____ BEARING _____ HOLE NO. A-1

LOGGED BY _____ ELEVATION _____ DIP _____ PROPERTY _____

STARTED _____ TESTS (CORRECTED) _____

FINISHED _____

CASING _____

CORE SIZE _____

FROM	TO	DESCRIPTION
3.0'	500.0'	360.0'-381.0' Stained quartzite, pink to grey, mixed with white and light buff quartzite. 381.0'-393.7' white quartzite. 393.7'-394.5' ground core. 394.5'-396.6' white quartzite. 396.6'-397.6' ground core. 397.6'-407.2' white to light grey quartzite, minor vugs, and porous quartzite. 407.2'-447.4' white uniform quartzite. 447.4'-457.4' white to light grey quartzite. 450.9'-451.5' minor sericite schist. 459.0'-500.0' white quartzite, occasional minor sericite schist on fractures, minor porous areas, no sulphides.
	500.0'	End of Hole. Ground core 407.2'-408.0' 413.6'-414.6' 417.1'-418.5' 420.0'-421.2' 422.6'-423.4' 426.3'-427.3' 428.9'-430.0' 430.3'-431.8' 437.2'-438.6' 442.8'-444.1' 446.6'-447.4' 457.4'-459.0'

A-1
N. 40°W - 28°

N (Mag.)

380' N

380' E

S-626359-3

RECEIVED
AUG 24 1983
7:59.10 AM
1818-150

INDUSMIN LIMITED
FRAZER BAY HILL CLAIMS
Killarney & Rutherford Townships
District of Manitoulin
Diamond Drill Hole No. A-1
Scale 1" = 100'
Aug. 1983 P. C. COLTAS

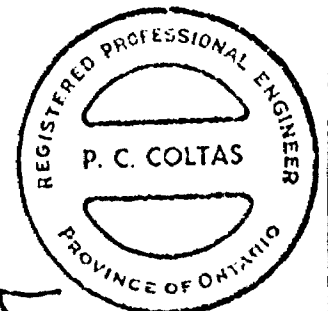
P. C. Coltas

INDUSMIN LIMITED

DIAMOND DRILL LOG

LOCATION S-626359-3; 450'N - 500' E. BEARING N.35' E. HOLE NO. A-2
 LOGGED BY P.C. Coltas ELEVATION - DIP -30° PROPERTY Frazer Bay Hill
 STARTED June, 1983 TESTS (CORRECTED) Claims
 FINISHED July, 1983 Recovery 97%
 CASING 25.0' All bearings relate
 CORE SIZE AXT. to magnetic north

FROM	TO	DESCRIPTION
0.0'	25.0'	Casing
25.0'	351.0'	White quartzite, minor sericite schist on fractures. 25.0'-88.6' Good white quartzite, only odd fractures with sericite schist, minor secondary quartz stringers. 88.6'-196.0' white quartzite, occasional minor sericite schist, usually on fractures. Very uniform, fractures 30 to 45° to core axis. 196.0'-219.8' White to buff quartzite, dark brown staining in vugs, no visible sulphides. 219.8'-268.0' White quartzite, very minor occasional sericite schist on fractures. 268.0'-268.2' Dark area, possible sulphides. 268.2'-351.0' White quartzite, very minor occasional sericite schist on fractures.
	351.0'	End of Hole.



P. C. Coltas

S-626359-3

600' E

O - N. 35° E. - 30° - A-2

450' N

N (mag)

INDUSMIN LIMITED
FRAZER BAY HILL CLAIMS

Killarney & Rutherford Townships
District of Manitoulin
Diamond Drill Hole No. A-2

Scale 1" = 100'

Aug. 1983

P. C. COLTAS

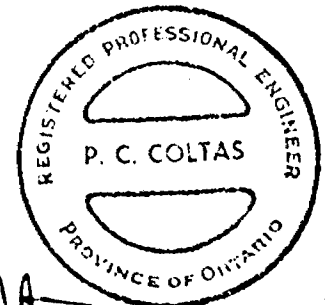
P. C. Coltas

INDUSMIN LIMITED

DIAMOND DRILL LOG

LOCATION S-026359-3; 650'N 420'W BEARING N57°E HOLE NO. A-3
 LOGGED BY P. C. Coltas ELEVATION - DIP -28° PROPERTY Frazer Bay
Hill Claims
 STARTED July, 1983 TESTS (CORRECTED)
 FINISHED July, 1983 Di. Test - 23°
 All Bearings relate
 to Magnetic north.
 CASING 15'
 CORE SIZE AXT (Recover - 98%)

FROM	TO	DESCRIPTION
0.0'	15.0'	Casing
15.0'	315.0'	<p>White Quartzite.</p> <p>15.0'-136.5' Very uniform quartzite, Fractures vary from 70° to 20° to core axis, with one to two fractures per foot on average, some 3 to 4 foot sections with no fractures. Except for minor sericite schist coatings on fractures, no other visible contamination.</p> <p>136.5'-157.4' White quartzite, occasional minor sections 1" to 4" of light buff to light brown porous quartzite. These sections are porous sandy sections, with silica cement. Little or no visible contamination. Some very minor dark brown areas could contain iron.</p> <p>157.4'-236.2' White to very light grey quartzite, predominantly white, very minor one to two foot sections of light red to light grey quartzite, probably minor iron, however not enough to affect ore grade. One to two fractures per foot.</p> <p>236.2'-240.7' Buff quartzite, porous sandy sections filled with unknown substance - oily appearance. Probably contains minor iron, one to two fractures per foot.</p>



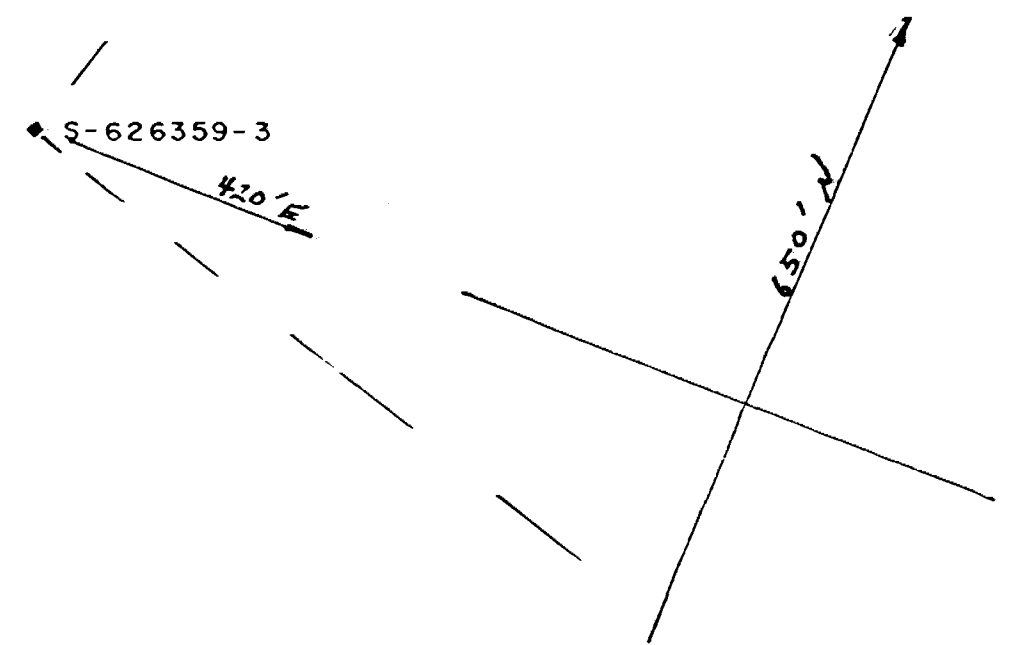
DIAMOND DRILL LOG

LOCATION _____ BEARING _____ HOLE NO. A-3
 LOGGED BY _____ ELEVATION _____ DIP _____ PROPERTY _____
 STARTED _____ TESTS (CORRECTED) _____
 FINISHED _____
 CASING _____
 CORE SIZE _____

FROM	TO	DESCRIPTION
15.0'	315.0'	240.7'-309.0' White to very light grey quartzite, very uniform, fine grained. Occasional minor areas of grey to buff staining, good material. 309.0'-315.0' Grey quartzite, red staining, probably high Fe ₂ O ₃ , contact zone.
315.0'	327.0'	Amphibolite dyke, minor disseminated sulphides throughout (pyrite?)
327.0'	402.0'	White to light grey quartzite. 327.0'-329.3' Grey stained quartzite, high Fe ₂ O ₃ , contact zone. 329.3'-335.6' White quartzite, minor areas of porous sandstone, good material. 335.6'-338.5' Grey quartzite, very minor disseminated sulphides (pyrite?). 338.5'-347.7' White quartzite, occasional vugs, or sandy sections. 347.7'-353.0' Grey quartzite, very minor disseminated sulphides (pyrite?). 353.0'-402.0' White quartzite, uniform material 395.0' - ½" dark grey area - minor sulphides. 396.0' - ¼" dark grey area - minor sulphides. minor sericite schist on fractures.
	402.0'	End of Hole.

N. 53° E. - 28°

N (Mag)



INDUSMIN LIMITED
 FRAZER BAY HILL CLAIMS
 Killarney & Rutherford Townships
 District of Manitoulin
 Diamond Drill Hole No. A-3
 Scale 1" = 100'

P. C. Coltas

Aug. 1983

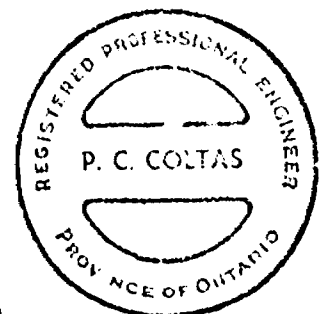
P. C. COLTAS

INDUSMIN LIMITED

DIAMOND DRILL LOG

LOCATION S-626359-3; 540' N. 460' E. BEARING S.45° W. HOLE NO. A-4
 LOGGED BY P.C. Coltas ELEVATION - DIP -34° PROPERTY Frazer Bay
Hill Claims
 STARTED July, 1983 TESTS (CORRECTED)
 FINISHED July, 1983 Recovery 93%
 CASING 3.0' All bearings relate
 to magnetic North.
 CORE SIZE AXT

FROM	TO	DESCRIPTION												
0.0'	3.0'	Casing												
3.0'	200.0'	<p>White quartzite, extremely uniform, occasional sericite schist on fractures. One to two fractures per foot, some areas only one fracture in 2 to 3 feet.</p> <p>169' - 170.5' fracture, minor sulphides.</p> <table> <thead> <tr> <th>Ground Core</th> <th>Ground Core</th> </tr> </thead> <tbody> <tr> <td>76' - 0.5'</td> <td>166' - 2.0'</td> </tr> <tr> <td>144' - 0.5'</td> <td>180' - 2.0'</td> </tr> <tr> <td>151' - 1.0'</td> <td>190' - 2.5'</td> </tr> <tr> <td>156' - 2.0'</td> <td>194' - 2.0'</td> </tr> <tr> <td>161' - 1.5'</td> <td></td> </tr> </tbody> </table> <p>Parallel fractures responsible for some ground core, however poor drilling responsible for most of the ground core.</p>	Ground Core	Ground Core	76' - 0.5'	166' - 2.0'	144' - 0.5'	180' - 2.0'	151' - 1.0'	190' - 2.5'	156' - 2.0'	194' - 2.0'	161' - 1.5'	
Ground Core	Ground Core													
76' - 0.5'	166' - 2.0'													
144' - 0.5'	180' - 2.0'													
151' - 1.0'	190' - 2.5'													
156' - 2.0'	194' - 2.0'													
161' - 1.5'														
	200.0'	End of Hole.												



P. C. Coltas

S-626359-3

460' E

540' N

A-4
S 45° W - 34°

N (mag)

INDUSMIN LIMITED
FRAZER BAY HILL CLAIMS

Killarney & Rutherford Townships
District of Manitoulin
Diamond Drill Hole No. A-4

Scale 1" = 100'

P. C. Coltas

Aug. 1983

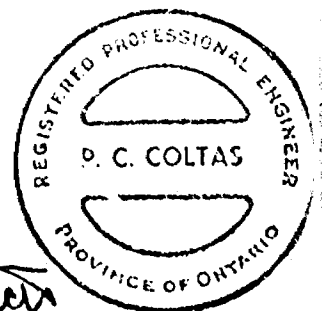
P. C. COLTAS

INDUSMIN LIMITED

DIAMOND DRILL LOG

LOCATION S-626359-3; 40' S. 680' E. BEARING S-46° W. HOLE NO. B-1
 LOGGED BY P. C. Coltas ELEVATION - DIP 31° PROPERTY Frazer Bay
Hill Claims
 STARTED June, 1983 TESTS (CORRECTED)
 FINISHED June, 1983 All bearings relate to
 Magnetic North
 CASING 5.0' Recovery 92%
 CGRE SIZE AXT.

FROM	TO	DESCRIPTION												
0.0'	5.0'	Casing												
5.0'	283.8'	White fine grained quartzite. 5.0'-120.9' White quartzite, sericite schist coating on fractures, 1 to 3 fractures per foot. <table data-bbox="662 957 1289 1144"> <tr> <td><u>Ground Core</u></td> <td><u>Ground Core</u></td> </tr> <tr> <td>35.0'-37.2'</td> <td>74.5'-75.0'</td> </tr> <tr> <td>40.6'-41.2'</td> <td>85.2'-86.3'</td> </tr> <tr> <td>47.0'-48.2'</td> <td>95.2'-96.3'</td> </tr> <tr> <td>58.6'-60.0'</td> <td>107.7'-108.3'</td> </tr> <tr> <td>62.5'-63.4'</td> <td></td> </tr> </table> 120.9'-122.8' Sericite Schist 122.8'-124.0' White to light grey quartzite, minor sericite schist. 124.0'-231.9' White quartzite, minor thin sericite schist on fractures, minor areas of light grey quartzite. 150.3'-151.7' grey area, very minor sulphides. 231.9'-237.7' Light grey quartzite, frequent thin seams of sericite schist, high Al_2O_3 . 237.7'-277.0' White quartzite, thin skin sericite schist on fractures, 1 to 2 fractures per foot. 250.9'-252.0' ground core. 252.0'-253.0' broken crumbled core, parallel fracture. 253.0'-253.0' ground core	<u>Ground Core</u>	<u>Ground Core</u>	35.0'-37.2'	74.5'-75.0'	40.6'-41.2'	85.2'-86.3'	47.0'-48.2'	95.2'-96.3'	58.6'-60.0'	107.7'-108.3'	62.5'-63.4'	
<u>Ground Core</u>	<u>Ground Core</u>													
35.0'-37.2'	74.5'-75.0'													
40.6'-41.2'	85.2'-86.3'													
47.0'-48.2'	95.2'-96.3'													
58.6'-60.0'	107.7'-108.3'													
62.5'-63.4'														



P. C. Coltas

DIAMOND DRILL LOG

LOCATION _____ BEARING _____ HOLE NO. B-1

LOGGED BY _____ ELEVATION _____ DIP _____ PROPERTY _____

STARTED _____ TESTS (CORRECTED) _____

FINISHED _____

CASING _____

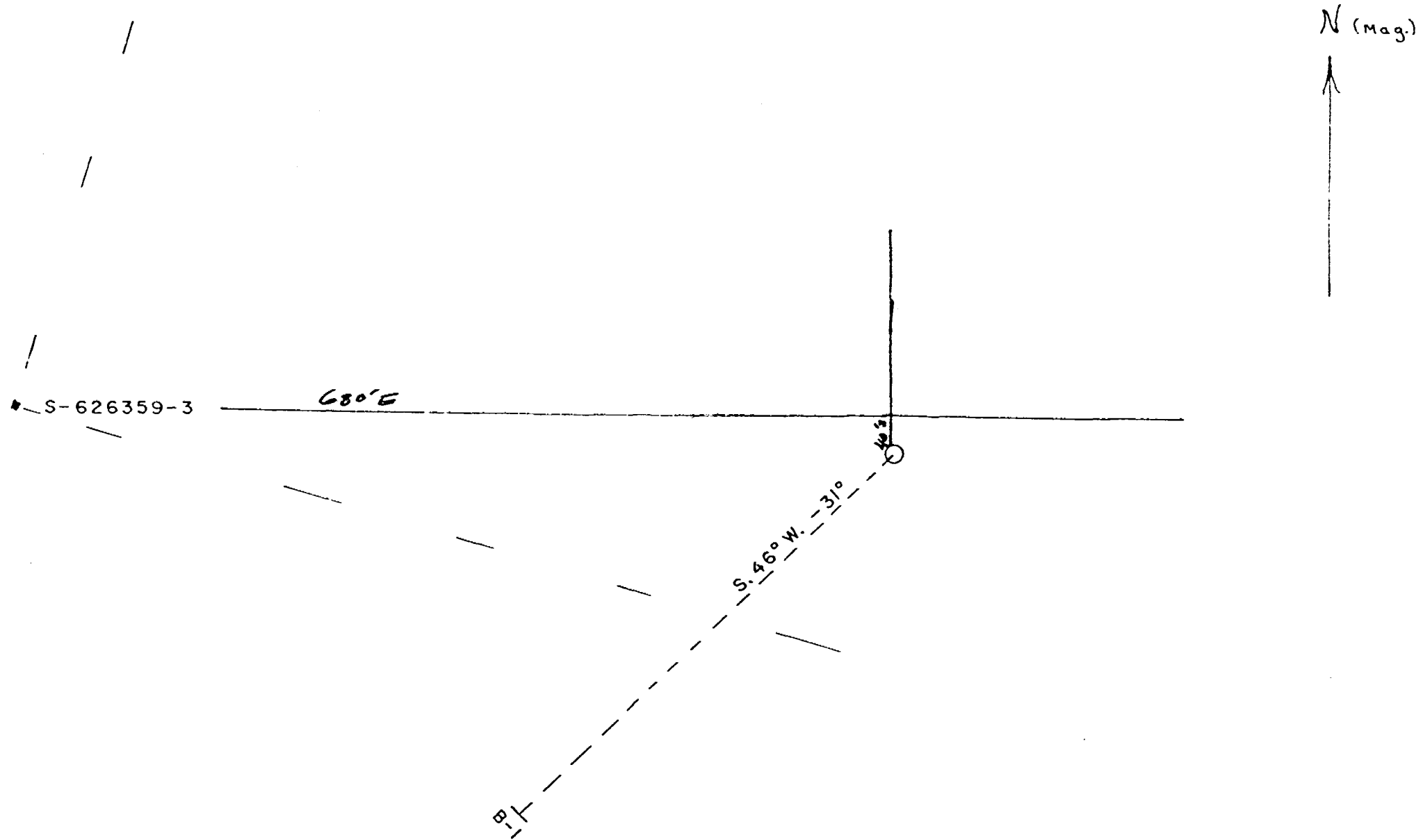
CORE SIZE _____

FROM	TO	DESCRIPTION
5.0'	283.8'	277.0'-283.8' Contact zone, white to light grey quartzite, minor red to buff banding, minor contamination from amphibolite dyke.
283.8'	286.5'	Amphibolite dyke, contact 70° to core axis.
286.5'	477.0'	White quartzite. 286.5'-291.4' Contact zone, contamination in quartzite from amphibolite.
		Ground core 289.1'-290.0' 290.5'-291.4'
		291.4'-300.0' White to pink quartzite, 0.1' sericite schist at 296.4'; 0.2' sericite schist at 297.1'. Quartzite high in Al ₂ O ₃ .
		300.0'-332.5' White quartzite, minor areas of light buff to pink quartzite.
		Ground core 306.1'-307.0' 330.5'-331.1'
		332.5'-335.5' White quartzite, occasional vugs, minor sulphides in vugs.
		335.5'-401.0' White quartzite, minor sericite schist on fractures.

DIAMOND DRILL LOG

LOCATION _____ BEARING _____ HOLE NO. B-1
 LOGGED BY _____ ELEVATION _____ DIP _____ PROPERTY _____
 STARTED _____ TESTS (CORRECTED) _____
 FINISHED _____
 CASING _____
 CORE SIZE _____

FROM	TO	DESCRIPTION
286.5'	477.0'	335.5'-401.0' <u>Ground core</u> <u>ground core</u> <u>ground core</u> 340.2'-340.7' 368.0'-369.4' 385.3'-386.0' 345.7'-346.6' 370.0'-371.1' 386.6'-387.4' 348.1'-348.6' 373.5'-374.3' 393.4'-394.5' 360.3'-361.6' 376.2'-377.5' 395.5'-396.6' 363.2'-364.1' 378.5'-380.0' 399.0'-401.0' 366.4'-367.5' 380.7'-381.8'
		401.0'-402.5' Sericite schist and quartzite 402.5'-409.3' White quartzite. 409.3'-409.8' Sericite Schist. 409.8'-450.0' White uniform quartzite. 450.0'-455.0' White quartzite, moderately friable. 455.0'-467.0' White quartzite, minor sericite schist on fractures. 467.0'-477.0' White quartzite, areas of sand, or friable sandstone
		<u>Ground core</u> <u>Ground core</u> 1' at 414' 2' at 450' 1' at 423' 0.5' at 460' 1' at 427' 1' at 470'
	477.0'	End of Hole Hole lost due to cave, sand material coming into hole.



P. C. Coltas

<p>INDUSMIN LIMITED</p> <p>FRAZER BAY HILL CLAIMS</p>
<p>Killarney & Rutherford Townships</p> <p>District of Manitoulin</p> <p>Diamond Drili Hole No. B-1</p> <p>Scale 1" = 100'</p>
<p>Aug. 1983</p> <p>P. C. COLTAS</p>

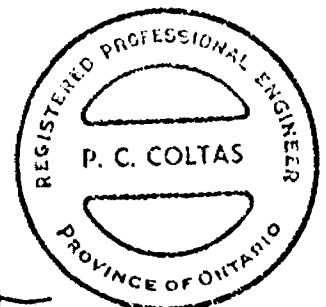
35-7-64

INDUSMIN LIMITED

DIAMOND DRILL LOG

LOCATION S-626361-1; 90' S. 750' W. BEARING S-44° W HOLE NO. B-2
 LOGGED BY P.C. Coltas ELEVATION - DIP -31° PROPERTY Frazer Bay
Hill Claims
 STARTED June, 1983 TESTS (CORRECTED)
 FINISHED July, 1983 Dip Test - 27°
 All bearings relate
 to magnetic north.
 CASING 2.0'
 CORE SIZE AXI (recovery 90%)

FROM	TO	DESCRIPTION								
0.0'	2.0'	Casing								
2.0'	207.0'	<p>White quartzite, only very minor sericite schist on fractures.</p> <p>2.0'-17.0' White quartzite, 10.0' recovered, rest ground core.</p> <p>17.0'-23.0' White to light buff friable sandstone. 5.8' feet recovered, rest ground core.</p> <p>23.0' to 72.0' White quartzite, occasional minor sericite schist on fractures. Minor rusted fractures, occasional fractures near parallel to core axis, creates lost ground core.</p> <table style="margin-left: auto; margin-right: auto;"> <tr> <td style="text-align: center;">Ground core</td> <td style="text-align: center;">Ground core</td> </tr> <tr> <td style="text-align: center;">19' - 1.5'</td> <td style="text-align: center;">49' - 0.5'</td> </tr> <tr> <td style="text-align: center;">32' - 2.0'</td> <td style="text-align: center;">68' - 0.5'</td> </tr> <tr> <td style="text-align: center;">37' - 1.0'</td> <td style="text-align: center;">72' - 1.0'</td> </tr> </table> <p>72.0'-106.0' White to very light grey quartzite, minor sericite schist on fractures.</p> <p>106.0'-125.0' White quartzite, minor areas of 1" to 2" vugs, minor sulphides.</p> <p>125.0'-135.0' White quartzite, occasional sections 0.1' to 0.8' of fracture filling, quartz in fractures porous, quartz surrounding these areas light buff to light grey in colour.</p>	Ground core	Ground core	19' - 1.5'	49' - 0.5'	32' - 2.0'	68' - 0.5'	37' - 1.0'	72' - 1.0'
Ground core	Ground core									
19' - 1.5'	49' - 0.5'									
32' - 2.0'	68' - 0.5'									
37' - 1.0'	72' - 1.0'									



P. C. Coltas

DIAMOND DRILL LOG

LOCATION _____ BEARING _____ HOLE NO. B-2 _____

LOGGED BY _____ ELEVATION _____ DIP _____ PROPERTY _____

STARTED _____ TESTS (CORRECTED) _____

FINISHED _____

CASING _____

CORE SIZE _____

FROM	TO	DESCRIPTION
2.0'	207.0'	<p>135.0'-150.0' White quartzite, increase in sericite schist filled fractures.</p> <p>150.0'-151.5' White to pink quartzite, porous, possibly higher in Fe_2O_3 and CaO.</p> <p>151.5'-178.0' White to light grey quartzite.</p> <p>178.0'-180.5' White quartzite, minor porosity, friable material.</p> <p>180.5'-204.7' White quartzite, occasional sericite schist covered fractures, minor porous sandy areas, medium Al_2O_3.</p> <p><u>Ground core</u> 110' - 0.5' 135' - 2.0' - Too soft to core 170.0' - 0.5'</p> <p>204.7' - 207.0' Red stained quartzite, minor sulphides, contact zone.</p>
207.0'	218.0'	amphibolite dyke, contact with quartzite, 65° to core axis.
218.0'	251.0'	White quartzite, minor light buff areas of sandy material. Minor sericite schist covered fractures.

DIAMOND DRILL LOG

LOCATION _____ BEARING _____ HOLE NO. B-2

LOGGED BY _____ ELEVATION _____ DIP _____ PROPERTY _____

STARTED _____ TESTS (CORRECTED) _____

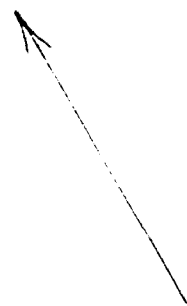
FINISHED _____

CASING _____

CORE SIZE _____

FROM	TO	DESCRIPTION
218.0'	251.0'	233.5' 2 to 3 inches of sericite schist. 250.8' to 251.0' Sericite schist. Ground core 207' - 1.0' 210' - 0.5' 233' - 1.0' 246' - 1.0' End of Hole.
	251.0'	

N (mag)



S-626361-1

750' W

90' S

S. 44° W. - 318'

BH-2

INDUSMIN LIMITED
FRAZER BAY HILL CLAIMS

Killarney & Rutherford Townships
District of Manitoulin
Diamond Drill Hole No. B-2

Scale 1" = 100'

P. C. Coltas

Aug. 1983

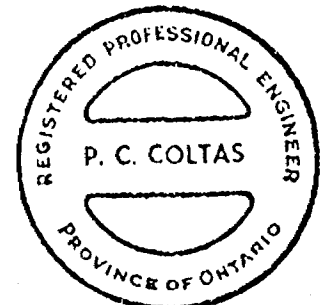
P. C. COLTAS

INDUSMIN LIMITED

DIAMOND DRILL LOG

LOCATION S-626361-4; 480 S. 980 E. BEARING S. 42° W. HOLE NO. B-3
 LOGGED BY P. C. Coltas ELEVATION - DIP -33° PROPERTY Frazer Bay Hill
 STARTED July, 1983 TESTS (CORRECTED) Claims
 FINISHED July, 1983 Recovery 97%
 CASING 2.0' All bearings relate
 to Magnetic North.
 CORE SIZE AXT

FROM	TO	DESCRIPTION
0.0'	2.0'	Casing
2.0'	250.0'	<p>White quartzite, fine to medium grained, occasional sericite filled fractures</p> <p>2.0'-9.5' White quartzite</p> <p>9.5'-11.0' Sericite schist and quartzite.</p> <p>11.0'-41.0' White quartzite, occasional sericite schist filled fractures.</p> <p>41.0'-45.0' Light buff quartzite, porous sandy sections (1.0' ground core).</p> <p>45.0'-67.0' White quartzite, minor sericite schist on fractures.</p> <p>67.0'-73.0' Sericite schist in quartzite, high Al_2O_3.</p> <p>73.0'-79.0' Light grey quartzite, high in sericite schist.</p> <p>79.0'-146.5' White quartzite, very uniform, occasional minor sericite schist on fractures. (136.3'-137.0' high sericite schist).</p>



P. C. Coltas

DIAMOND DRILL LOG

LOCATION _____ BEARING _____ HOLE NO. B-3

LOGGED BY _____ ELEVATION _____ DIP _____ PROPERTY _____

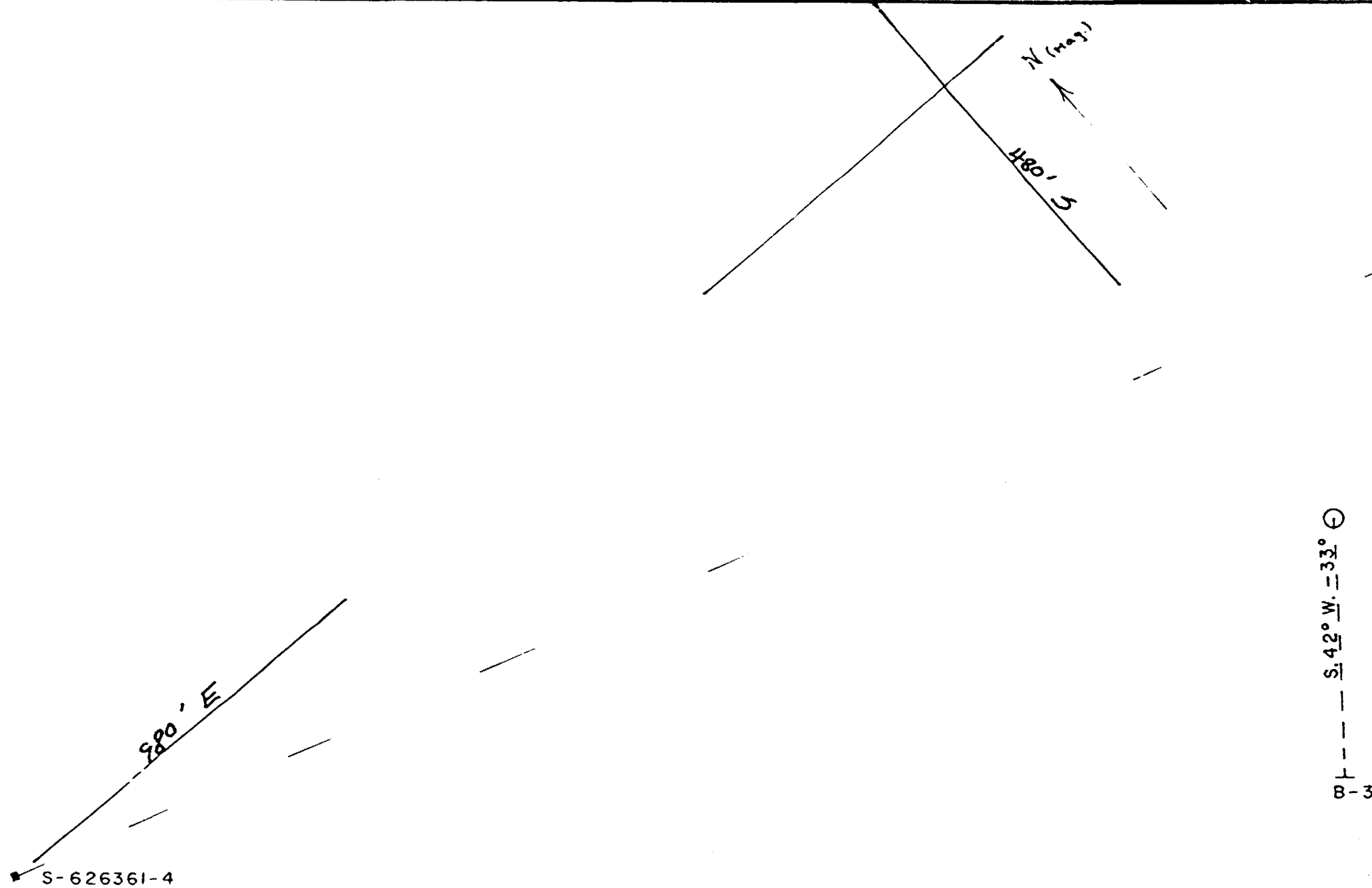
STARTED _____ TESTS (CORRECTED)

FINISHED _____

CASING _____

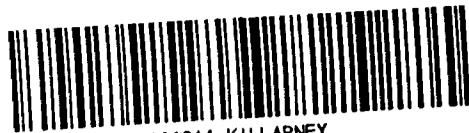
CORE SIZE _____

FROM	TO	DESCRIPTION
2.0'	250.0'	<p>146.5'-160.0' White to light buff quartzite, sections of porous sandy material.</p> <p>160.0'-174.6' White quartzite, minor porous sandy areas, occasional sericite schist on fractures.</p> <p>174.6'-198.6' Light grey to light buff quartzite, minor sericite schist throughout. Possibly minor sulphides, occasional rusted areas, high Al_2O_3, medium Fe_2O_3.</p> <p>198.6'-250.0' White uniform quartzite, occasional sericite schist on fractures.</p> <p>214.0'-216.0' sandy porous section 1.0' ground core.</p> <p>242.1'-242.4' high sericite schist.</p> <p>243.3'-243.6' high sericite schist.</p> <p>End of Hole.</p>



P. C. Coltas

<p>INDUSMIN LIMITED</p> <p>FRAZER BAY HILL CLAIMS</p> <p>Killarney & Rutherford Townships</p> <p>District of Manitoulin</p> <p>Diamond Drill Hole No. B-3</p> <p>Scale 1" = 100'</p>
<p>Aug. 1983</p> <p>P. C. COLTAS</p>



900



KILLARNEY (M. 969)
RUTHERFORD
The Mining Act

FILE S. 626359
Instructions - Supply required data on a separate form for each type of work to be recorded (see table below).
- For Geo-technical work use form no. 1362 "Report of Work (Geological, Geophysical, Geochemical and Expenditures)".

Name and Postal Address of Recorded Holder INDUSMIN LIMITED	Prospector's Licence No. 7186
P.O. Box 40, Commerce Court West, Toronto, Ontario M5L 1B4	

Summary of Work Performance and Distribution of Credits

Total Work Days Cr. claimed 2431	Mining Claim			Mining Claim			Mining Claim		
	Prefix	Number	Work Days Cr.	Prefix	Number	Work Days Cr.	Prefix	Number	Work Days Cr.
For Performance of the following work. (Check one only) <input type="checkbox"/> Manual Work <input type="checkbox"/> Shaft Sinking Drifting or other Lateral Work. <input type="checkbox"/> Compressed Air, other Power driven or mechanical equip. <input type="checkbox"/> Power Stripping <input checked="" type="checkbox"/> Diamond or other Core drilling <input type="checkbox"/> Land Survey	S	626345	100	S	626354	100	S	626362	100
		626346	100		626355	100		626371	100
		626347	100		626356	100		626372	100
		626348	100		626357	100		626373	100
		626349	100		626358	100		629882	100
		626350	100		626359	100		629883	100
		626351	100		626360	100		648304	60
		626352	100		626361	111		648305	60

All the work was performed on Mining Claim(s) **626353 100 S626359 and S626361**

Required Information eg: type of equipment, Names, Addresses, etc. (See Table Below)

Work performed by Eastern Ontario Drilling Limited
Sharbot Lake, Ontario
KOH 2PO

Equipment - Boyls Bros Drilling Unit
Core Size; AXT
Personnel employed: Ron Ferguson (driller) Sharbot Lake Ont. KOH 2PO
Kevin Ferguson (helper) " " " "
Brian Hackett (driller) " " " "
John Morrow (helper) " " " "

Dates work was performed - June 15, 1983 to July 15, 1983
Total Footage Drilled 2431'

WORK ASSIGNMENT
S. 626359 = 1830, BAL. 2170
S. 626361 = 390, BAL. 3610

Date of Report: September 7, 1983
Recorded by Holder or Agent (Signature): *P. C. Coltas*

RECEIVED
Sept 9/83
7:20 10:11 12:12 1:20 4:26

Certification Verifying Report of Work

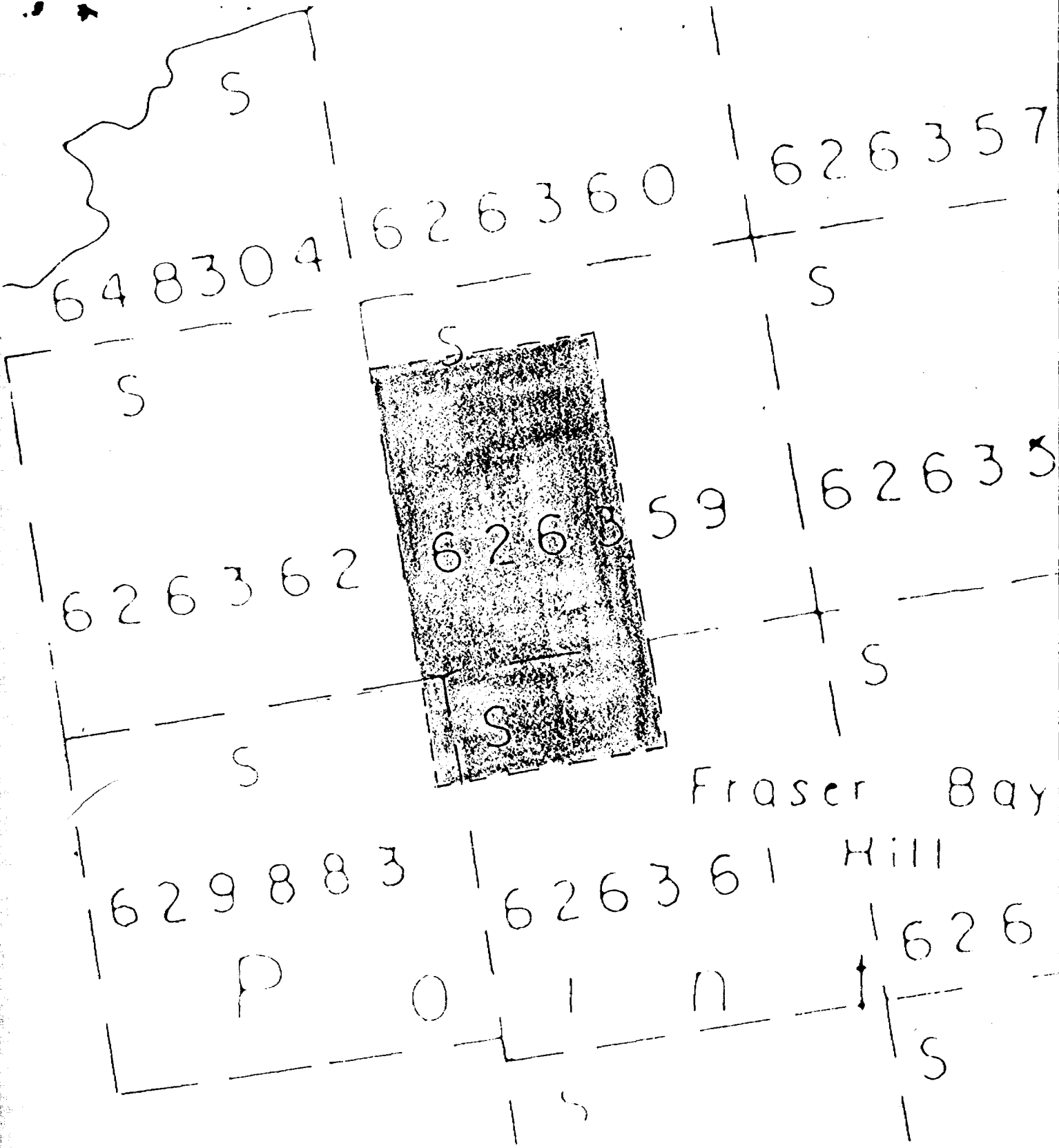
I hereby certify that I have a personal and intimate knowledge of the facts set forth in the Report of Work annexed hereto, having performed the work or witnessed same during and/or after its completion and the annexed report is true.

Name and Postal Address of Person Certifying
Peter C. Coltas, Indusmin Limited, P.O. Box 40, Commerce Court West
TORONTO, Ontario M5L 1B4


Date Certified: **September 7, 1983**
Certified by (Signature): *P. C. Coltas*

Table of Information/ Attachments Required by the Mining Recorder

Type of Work	Specific information per type	Other information (Common to 2 or more types)	Attachments
Manual Work	Nil	Names and addresses of men who performed manual work/operated equipment, together with dates and hours of employment.	Work Sketch: these are required to show the location and extent of work in relation to the nearest claim post.
Shaft Sinking, Drifting or other Lateral Work			
Compressed air, other power driven or mechanical equip.	Type of equipment	Names and addresses of owner or operator together with dates when drilling/stripping done.	
Power Stripping	Type of equipment and amount expended. Note: Proof of actual cost must be submitted within 30 days of recording.		
Diamond or other core drilling	Signed core log showing: footage, diameter of core, number and angles of holes.		Work Sketch (as above) in duplicate
Land Survey	Name and address of Ontario land surveyor.	Nil	Nil



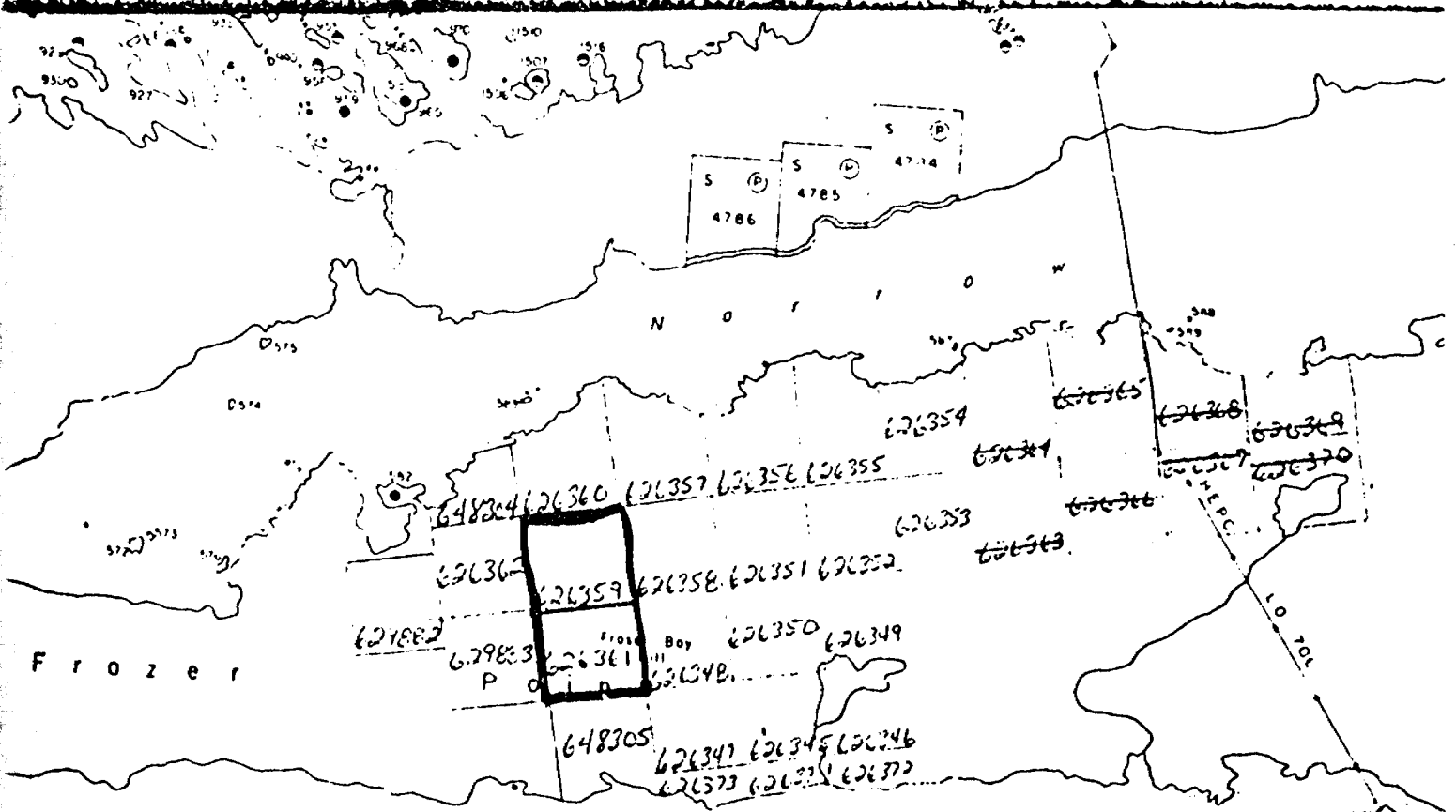
INDUSMIN LIMITED
 FRAZER BAY HILL CLAIMS

Location 1983 Drilling 

Scale 1" = 450'

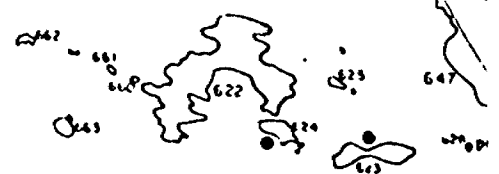
Aug. 1983 P.C. Collas

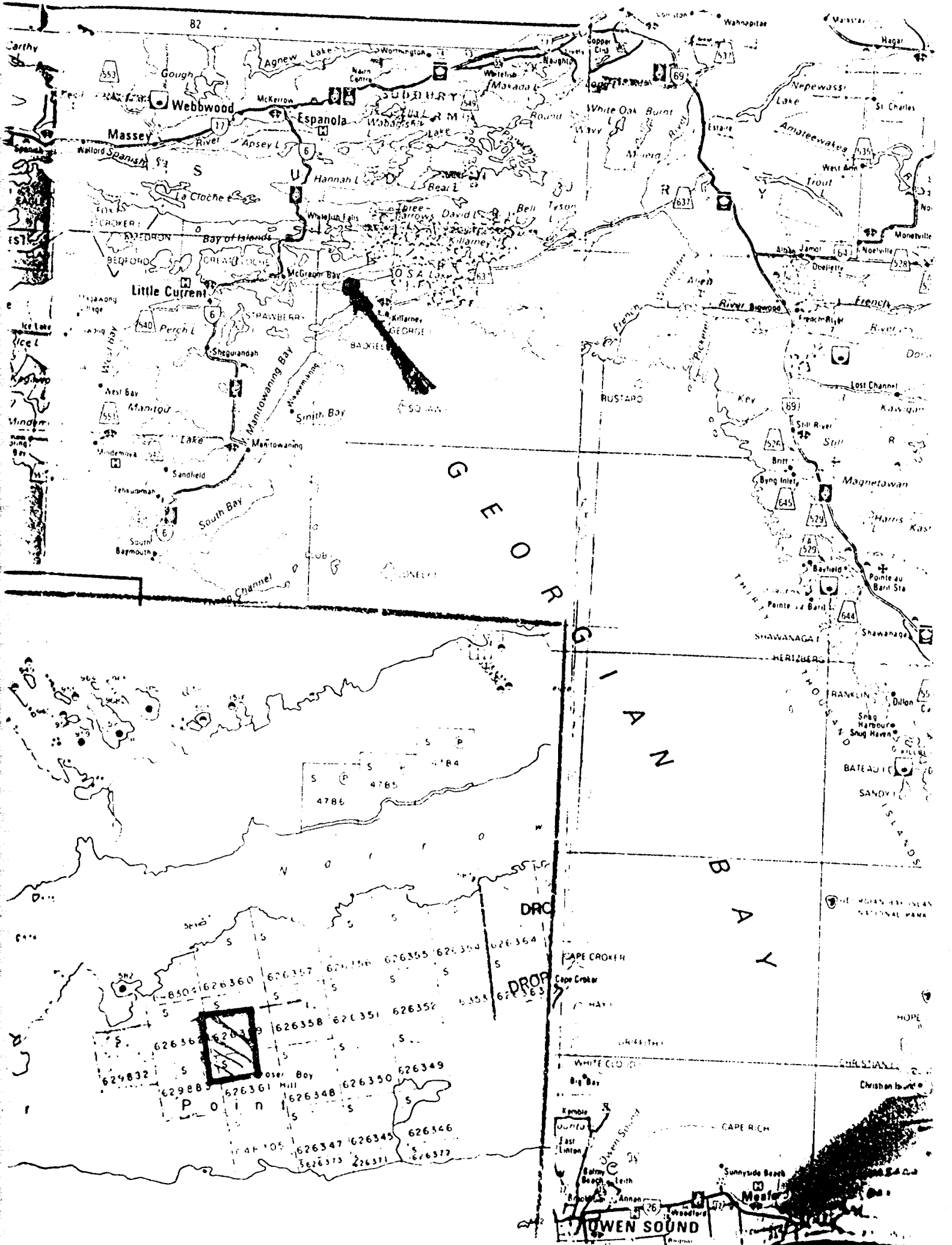
*Added
 by P.C. Collas*



KILLARNEY

SCALE 1" = 40 CH





G
E
O
R
G
I
A
N
B
A
Y

S
P
4785
4786

626332 62988 626361 626348 626350 626346
626336 626337 626338 626351 626352 626354
626360 626361 626362 626363 626364
626365 626366 626367 626368 626369 626370
626371 626372 626373 626374 626375 626376
626377 626378 626379 626380 626381 626382
626383 626384 626385 626386 626387 626388
626389 626390 626391 626392 626393 626394
626395 626396 626397 626398 626399 626400

CAPE CROKER
Cape Croker
WHITE CLOUT
Big Bay
Kembie
Ontonagon
East Linton
Sunnyvale Beach
Mentor
OWEN SOUND

CHRISTIAN ISLANDS
SANDY ISLANDS
SHAWANAGAN
MAGNETAWAN
BATEAU ISLANDS
FRANKLIN
Dillon
Snug Harbour
Snug Haven
HOPE
CHRISTIAN ISLANDS
CHRISTIAN ISLANDS
CHRISTIAN ISLANDS
CHRISTIAN ISLANDS