



Diamond Drilling

010

Township of HYMAN

Report No: 19

Work performed by: Amax Exploration Incorporated

| Claim No | Hole No | Footage | Date | Note |
|----------|---------|---------|--------|------|
| S 359577 | 54028-0 | 351' | Jan/76 | (1) |
| | 54034-0 | 141' | Mar/76 | (1) |
| | 54035-0 | 271' | Mar/76 | (1) |
| | 54038-0 | 220' | Mar/76 | (1) |
| S 359575 | 54033-0 | 650' | Feb/76 | (1) |
| S 359576 | 54039-0 | 285' | Mar/76 | (1) |
| S 359579 | 54041-0 | 432' | Mar/76 | (1) |
| S 359580 | 54040-0 | 490' | Mar/76 | (1) |

TOTAL 8 DH 2840 FT

Notes:

(1) #27

BOREHOLE RECORD

#27 - Sudbury

DATE PROCESSED MAY 06, 1976

BOREHOLE# 54028-0 PROPERTY AGNEW LAKE NTS# 411-5 SH# ANCH# DEPTH 00351 AZIMUTH 289 GRID B. 00 31500 DIP -45 00 ELEV 0875 LATITUDE 5000655 DEPARTURE E002375

CHK'D.....

DATE.....

INCLINATION AND TROPARI TESTS

DEPTH AZIMUTH DIP DEPTH AZIMUTH DIP DEPTH AZIMUTH DIP DEPTH AZIMUTH DIP
 0012 -45 30 0100 -38 30 0200 -34 30 0340 -34 30

COMMENTS

LOGGED BY..W O HANSON STARTED..JAN 28, 1976 COMPLETED..JAN 30, 1976
 DRILLED EX BY CANICO L-24 GAS CLAIM S-359577 IN LOT 12 CON I
 OF HYMAN TOWNSHIP EW CSG AND SHOE LEFT IN HOLE

SAMPLE ENTRIES

| DEPTH | LENGTH | MNZN | ROCK | DESCRIPTION | ANG |
|--------|--------|------|------|--|-----|
| 0000.0 | 0.0 | | | COLLAR | |
| 0008.0 | 8.0 | | | OVERBURDEN SOC EW CSG TO 9 FEET | |
| 0015.0 | 7.0 | QTE | | FG LT GY WKLY SHRD WITH FOTN PLL TO SHRG 10-15 PCNT SRCT OCCURRING ALONG SHRG AND AS DISCRETE CLUSTERS WITH RANDOM ORIENTATION THESE CLUSTERS MAY BE AFTER FSP GRAINS THE SRCT PLL TO THE SHRG XCUTS QTZ GRAINS AND IS PROB AFTER QTZ SHRG OBSCURES MOST PRIMARY SED FEATURES SUCH AS XBOG ET C THE ORIGINAL SED APPEARS TO HAVE BEEN GRITTY WITH GRAINS TO 2-3MM IN A MIX LESS THAN 1MM QTZ=85 PCNT SRC T 10-15 PCNT KSPAR 0-5 PCNT 0-1 PC NT CHL LOCALLY ORIGINAL BEDS APPEAR TO HAVE BEEN THICKLY BEDDED AND NEAR 70 LY MASSIVE 25-35 CPS | 65 |
| 0020.0 | 5.0 | QTE | | AS ABOVE AT 15.0 SAMPLED FOR BACKGRD 65 UND ASSAY 25-35 CPS | |
| 0022.0 | 2.0 | QTE | | AS ABOVE AT 15.0 25-35 CPS | 65 |
| 0022.8 | 0.8 | QTE | | AS ABOVE AT 15.0 SLLY YELLOWISH AND GRITTIER TEXTURE TO 10 PCNT OF KSPAR APPEARS TO BE A DISTINCT BED CTS ARE WKLY GRDL OVER 2 CM AND OBLIQUE TO FOTN IE 40, ABNT SRCT 25-35 CPS | |
| 0029.4 | 6.6 | QTE | | AS ABOVE AT 15.0 SLLY FELDSPATHIC WITH KSPAR TO 5 PCNT OCC QTZ CLAST TO 3MM 25-35 CPS | 65 |
| 0030.0 | 0.6 | QTE | | LT GY FG-MG FOTO TO POORLY FOTO FELD SPATHIC QTE QTZ 75 PCNT SRCT 15 PCNT KSPAR 10 PCNT SERICITIC FOTN PLL TO SHRG OVERPRINTS AND OBSCURES BEDDING FEATURES QTZ GRAINS GENERALLY ABOUT 1MM MOST OF THE QTZ IS VITREOUS TO GALSSY AND APPEAR TO BE DERIVED FROM AN IGNEOUS SOURCE RK UCT IS GRDL OVER 5CM AT ABOUT 40 TO THE CORE UCT ALSO APPEARS VAGUELY IRREGULAR 25-35 CPS | 70 |

| DEPTH | LENGTH | MNZN | ROCK | DESCRIPTION | ANG |
|--------|--------|------|---------------------------------------|--------------------------------------|-----|
| 0035.0 | 5.0 | QTE | AS ABOVE AT 30.0 SAMPLED FOR BACKGRO | UND ASSAY 25-35 CPS | 65 |
| 0046.0 | 11.0 | QTE | AS ABOVE AT 30.0 25-35 CPS | | 6' |
| 0051.0 | 5.0 | QTE | AS ABOVE AT 30.0 5 FOOT BARREN SAMP | LE 25-35 CPS | 65 |
| 0052.6 | 1.6 | QTE | AS AT 30.0 34.8 - 61.5 CPS | | 70 |
| 0054.6 | 2.0 | QTE | LT GY SLLY FSPC 2 PCNT KSPAR WKLY | 8XYD AND GRITTY 1-2MM WITH LOW PCNT | |
| | | | | OF FG MTX WKLY SHRD POORLY SORTED | |
| | | | | POSS A DISTINCT BED 33 TO 110.6 CPS | |
| 0059.6 | 5.0 | QTE | AS ABOVE AT 30.0 5 FOOT BARREN SAMPL | E 25-35 CPS | 65 |
| 0066.8 | 7.2 | QTE | AS ABOVE AT 30.0 25-35 CPS CORE | ANGLES VAGUE | 60 |
| 0075.0 | 8.2 | QTE | LT GY TO SLLY REDDISH DUE TO HEMATIT | E STAINING QUITE MASS TEXT WITH WK | 55 |
| | | | | FOTN 10 PCNT SRCT 90 PCNT QTZ WITH | |
| | | | | ONLY RARE FSP IE CLEAN QTE TEXTURAL | |
| | | | | LY THIS RK IS QUITE GRITTY. GRAINS | |
| | | | | RED GOETHITE TO 5 PCNT AND 1MM THAT | |
| | | | | COULD BE OXIDIZED PY ALSO VERY RARE | 60 |
| | | | | SPK PY 25-35 CPS | |
| 0080.0 | 5.0 | QTE | AS AT 75.0 BACKGROUND SAMPLE 25-35 | | |
| 0082.3 | 2.3 | QTE | AS ABOVE AT 81.9 WKLY VUGGY AND BLEA | CHED APPEARANCE 25-35 CPS | |
| 0083.4 | 1.1 | GC | GROUND CORE POSS WATER BEARING ZONE | AS BH MAKES WATER AT ABOUT 3-5 GALLO | |
| | | | | NS PER MINUTE | |
| 0083.9 | 0.5 | DIKE | FG BRICK RED VERY WKLY FOTD TO MASS | MICROCLINE 90 PCNT QTZ 10 PCNT WITH | |
| | | | | MINOR SRCT POSS A SMALL FG ACIO DIKE | |
| | | | | 25-35 CPS CTS SHARP AND IREGULAR | |
| 0088.2 | 4.3 | QTE | LT GY FG EVEN TEXTURED WKLY FOTD | NO DISCERNABLE BEDDING ON SMALL SCAL | 65 |
| | | | | E BUT ENTIRE UNIT MAY BE A BED 10-15 | |
| | | | | PCNT SRCT MINOR KSPAR 25-35 CPS | |
| 0089.8 | 1.6 | QTE | AS ABOVE AT 88.2 35-50 CPS | | |
| 0100.0 | 10.2 | QTE | VFG-FG SLLY GRITTY FELOSPATHIC QTE | OCC QTZ GRAIN 1MM BY 3MM IN MTX AVGE | 65 |
| | | | | 1MM GRAINS SLLY ANGULAR AT SUB ROUND | |
| | | | | ED SERICTTIC ALONG WK FOTN WHICH | |
| | | | | OVERPRINTS AND OBSCURES VAGUE BEDDIN | |
| | | | | G WITH ANGLES VAGUE AT 40-50 AND OBL | 70 |
| | | | | IQUE TO FOTN 25-35 CPS | |
| 0104.7 | 4.7 | QTE | AS ABOVE AT 100.0 BACKGROUND SAMPLE | | 70 |
| | | | | 25-35 CPS | |
| 0113.8 | 9.1 | QTE | AS ABOVE AT 100.0 SLLY LESS GRITTY | WITH POSS VAGUE THICK BEDDING RARE | 65 |
| | | | | THIN BED TO 5CM THAT CONTAIN TO 10 | |
| | | | | PCNT MAFIC MINERAL POSS HBL 25-35 | 70 |
| | | | | CPS | |
| 0116.8 | 3.0 | GC | GROUND CORE | | |
| 0135.0 | 18.2 | QTE | FG GY-LT GY MASS TEXTURE WITH NO DISC | ERNABLE BEDDING FEATURES A DISTINCT | 55 |
| | | | | SHRG FOTN OVERPRINTS SED FEATURES | |

| DEPTH | LENGTH | MNZN | ROCK | DESCRIPTION | ANG |
|--------|--------|------|------|--|-----|
| | | | | 10-15 PCNT SRCT HAS DEVELOPED ALONG SHRG AFTER QTZ QTZ GRAINS 1MM AND LESS WITH RAKE QTZ GRAIN TO 2MM GRAINS ARE ROUNDED TO ANGULAR WHERE SHATTERED BY SHRG SOME VFG FSP LESS THAN 5 PCNT OF RK 25-35 CPS | 65 |
| 0140.0 | 5.0 | QTE | | AS ABOVE AT 135.0 25-35 CPS | 60 |
| 0141.0 | 1.0 | QTE | | AS ABOVE AT 135.0 44-63 CPS | 65 |
| 0143.8 | 2.8 | CONG | | QPC WITH POOR PEBBLE PACKING QTZ PBL S 1-3CM FORM 10 PCNT OF RK AND ARE UNEVENLY DISTRIBUTED THROUGH THE RK PBL ARE SHRD AND STRETCHED WITH SRC T ALONG SHRG MTX IS FG QTE AS AT 135.0 NO SULP OBSERVED, QTZ VEIN 142 .1 TO 142.3 62-148 CPS SHRG & WK FRACTURING AT 40 DEGREES ALSO SHRG AT 65 VAGUE BEDDING AT 35-40 | 65 |
| 0148.8 | 5.0 | QTE | | AS ABOVE AT 135.0 30-40 CPS | 55 |
| 0154.8 | 6.0 | QTE | | AS ABOVE AT 135.0 30-40 CPS | 50 |
| 0158.3 | 3.5 | QTE | | AS ABOVE AT 135.0 30-50 CPS | 40 |
| 0160.2 | 1.9 | QTE | | AS ABOVE AT 135.0 30-40 CPS | 55 |
| 0163.6 | 3.4 | QTE | | AS ABOVE AT 135.0 RARE QTZ PBL 40-303 CPS | 60 |
| 0165.2 | 1.6 | CONG | | QPC WITH HLY SHRD QTZ PBL 1CM TO 4 CM PBL ARE 80 PCNT OF RK IN FG QTE MTX PBL ARE HLY SHRD AND STRETCHED WITH ABNT SRCT ALONG SHRG BED CTS ARE DISTINCT AT 85 TO CORE MTX IS SRCT RICH QTZ PBL ARE OF IGNEOUS ORIGIN NO SULP WERE OBSERVED 125-165 CPS | 85 |
| 0165.8 | 0.6 | QTE | | AS ABOVE AT 135.0 45-85 CPS | |
| 0169.0 | 3.2 | QTE | | AS ABOVE AT 135.0 30-35 CPS | 65 |
| 0172.0 | 3.0 | QTE | | AS ABOVE AT 135.0 RARE QTZ PBL 35-46 CPS | 65 |
| 0176.0 | 4.0 | QTE | | AS ABOVE AT 135.0 ARGILLACEOUS 174 T 75 D 175.0 25-35 CPS RARE SPK PY A 174.4 5FOOT BARREN SAMPLE | |
| 0183.6 | 7.6 | QTE | | MG GY MASS GRITTY SLLY DIRTY WITH MINOR BIOT AND RAKE GARNET QTZ GRAINS 1-2MM ARE 60 PCNT OF RK IN A MTX LESS THAN 1MM OF QTZ-SRCT AND MINOR BIOT SHRG IS PROMINENT UCT AND LCT ARE DISTENCT AT 85-90 DEGREES TO CORE UNIT PROB IS A SINGLE DISTINCT BED 25-35 CPS LCLY TO 1 PCNT PD GRAINS | 60 |
| 0187.3 | 3.7 | QTE | | FG MASS DK GY SLLY AGLC WITH RARE GAR BECOMES PROGRESIVELY MORE AGLC IN DOWN HOLE DIRECTION AND GRADES IN TO NEXT UNIT DOWNHOLE 25-35 CPS | 50 |
| 0190.6 | 3.3 | GWKE | | FG DK GY STGLY FOTD A VERY DIRTY PELTIC RK BIOT-SRCT-QTZ FSP MTX WHICH IS HLY SHRD AND LCLY CNRD GAR TO 2-3 MM LCLY TO 15 PCNT WHICH | 60 |

| DEPTH | LENGTH | MNZN | ROCK | DESCRIPTION | ANG |
|--------|--------|------|------|---|-----|
| | | | | ARE ROTATED AND RIMMED BY CHL RK IS | |
| | | | | VERY SCHISTOSE 25-35 CPS | |
| 0194.2 | 3.6 | GC | | GROUND CORE | |
| 0200.0 | 5.8 | GWKE | | AS ABOVE AT 190.6 25-35 CPS LCLY STK 65 | |
| | | | | 5 PY TO 1 PCNT GAR ABNT | |
| 0206.8 | 6.8 | GWKE | | AS ABOVE AT 190.6 25-35 CPS | |
| 0217.6 | 10.8 | GWKE | | AS ABOVE AT 190.6 NMRS SND QTE HLY 60 | |
| | | | | CNRD 25-35 | |
| 0219.7 | 2.1 | QTZ | | VEIN QTZ WHITE MASS HYDROTHERMAL QTZ | |
| | | | | WITH NMRS INCL GWKE WKLY SHRD 25-35 | |
| | | | | CPS | |
| 0224.7 | 5.0 | QTZ | | VEIN QTZ AS ABOVE AT 219.7 25-35 CPS 50 | |
| 0227.3 | 2.6 | CONG | | QPC QTZ PBL 1CM TO 4CM TO 30 PCNT 45 | |
| | | | | OF RK PBL'S ARE VEIN QTZ TYPE AND ARE | |
| | | | | STRETCHED AND SHEARED MTX IS A GRIT | |
| | | | | TY QTE THAT HAS MINOR CHL AND TO 10 | |
| | | | | PCNT PK FSP GRAINS NO SULP HAS OBSE. | |
| | | | | RVED IN THE MTX 65-749 CPS 40 | |
| 0229.6 | 2.3 | QTZ | | QTZ VEIN WHITE MASS 35-40 CPS | |
| 0231.6 | 2.2 | QTE | | FG GY-LT GY FSPC QTE WITH RARE QTZ 55 | |
| | | | | PBL HLY SHRD WITH ABNT SRCT ALONG | |
| | | | | SHRG 35-40 CPS | |
| 0233.1 | 1.3 | CONG | | QPC 15 PCNT SHRD QTZ PBL 2CM-5CM 45 | |
| | | | | IN A CLEAN QTE MTX NO SULP 25-40 CP | |
| | | | | S | |
| 0236.2 | 3.1 | QTE | | FG LT GY SLLY GRITTY HLY SHRD SRCT 50 | |
| | | | | RICH MINOR FSP RARE QTZ PBL 2MMX5MM | |
| | | | | HLY SHRD SRCT TO 20 PCNT ALONG SHRG | |
| | | | | 25-40 CPS | |
| 0238.0 | 1.8 | QTE | | AS AT 236.2 BUT INTENSELY SHRD AND 50 | |
| | | | | WITH BANDS SRCT TO 1CM THICK COMPRIS | |
| | | | | E 30 PCNT OF BK | |
| 0240.0 | 2.0 | CONG | | QPG AS ABOVE AT 233.1 ABNT SRCT IN 50 | |
| | | | | QTE MTX 35-247 CPS | |
| 0245.0 | 5.0 | QTE | | FG LT GY SLLY GRITTY CLEAN QTE PROND 60 | |
| | | | | UNCED SHRG WITH ABNT SRCT ALONG SHRG | |
| | | | | QTZ VEIN 241.5 TO 242.5 30-35 CPS | |
| 0251.7 | 6.7 | QTE | | AS ABOVE AT 245.0 30-40 CPS 65 | |
| 0252.5 | 0.8 | QTZ | | WHITE MASS VEIN QTZ WITH INCLUSIONS | |
| | | | | OF QTE, SPKS PY 30-40 CPS | |
| 0257.4 | 4.9 | QTE | | FG LT GY-LT GKN HLY SHRD DIRTY WITH 60 | |
| | | | | 5-10 PCNT BIOT SRCT ALONG SHRG TO | |
| | | | | 25 PCNT VERY PRONOUNCED FOTN PLL TO | |
| | | | | SHRG 1-2 PCNT PO-PY 50-40 CPS | |
| 0258.8 | 1.4 | QTZ | | MASS WHITE VEIN QTZ WITH INCLUSIONS | |
| | | | | DIRTY SRCT QTE BLEBS PY 1 PCNT 30-40 | |
| | | | | CPS | |
| 0268.5 | 9.7 | QTE | | AS ABOVE AT 257.4 PLUS RARE GAR TO 65 | |
| | | | | 1MM 30-40 CPS | |
| 0272.0 | 3.5 | GC | | GROUND CORE | |
| 0276.4 | 4.4 | SCH | | FG DK GY AGLC-PELITIC METASED HLY 65 | |
| | | | | SHRD WITH STG FOTN BIOT-SRCT-QTZ WIT | |
| | | | | H GAR 1MM TO 5MM TO 20 PCNT OF THE | |
| | | | | RK GAR ARE SHATTERED AND ROTATED ALO | |
| | | | | NG SHRG SMEARS AND STKS PY 2-3 PCNT | |

BOREHOLE RECORD

DATE PROCESSED MAY 06, 1976

BOREHOLE# 54034-0 PROPERTY AGNEW LAKE NTS# 411-5 SH# ANOM# DEPTH 00141 AZIMUTH 289 00 GRID B. 31500 DIP -50 00 ELEV 0865 LATITUDE S001100 DEPARTURE E001600
CHK'D..... DATE.....

INCLINATION AND TROPARI TESTS

DEPTH AZIMUTH DIP DEPTH AZIMUTH DIP DEPTH AZIMUTH DIP DEPTH AZIMUTH DIP
0050 -48 30

COMMENTS

LOGGED BY...R L HORST STARTED..MAR 03, 1976 COMPLETED..MAR 04, 1976
DRLLD EX BY CANICO L-24 GAS CLAIM S-359577 HYMAN TOWNSHIP
ABANDONED AT 141 FT DUE TO BENT CSNG CAUSING VIBRATION & SHRNG
OF RODS

SAMPLE ENTRIES

| DEPTH | LENGTH | MNZN | ROCK | DESCRIPTION | ANG |
|--------|--------|------|------|---|-----|
| 0000.0 | 0.0 | | | COLLAR | |
| 0043.5 | 43.5 | | | CVERBURDEN CASING TO 44 FT | |
| 0050.0 | 6.5 | QTE | | FG TO MG SRCTZD & SLLY SCHSTSE GRTTY 80 WITH 2-3 MM QTZ GRNS & MNOR K-SPR BD DNG SUB-PRLL TO SCHSTSTY QTZ 80% K-S PR 5% & SRCT 15% WELL SORTED & MTR SUB-RNOD GRNS ORGNL SED PRBLY ORTH QOTE MNOR 1 MM QTZ VEINS PRLL SCHST 20-35 CPS | |
| 0060.0 | 10.0 | MVVW | QTE | FG TO MG SRCTZD AS ABOVE WELL SRTD MTR FG MVVW DISS & BLEBS PY PSSBLY FRAMBOIDS 25-35 CPS | 75 |
| 0070.0 | 10.0 | MVVW | QTE | FG TO MG SRCTZD AS ABOVE QTZ RICH AT 80 66.6 FT TO 67.1 FT PSSBLY QTZ VEINS MVVW PY AS BLEBS & DSSMNTD 25-35 CPS | |
| 0078.9 | 8.9 | MVVW | QTE | FG TO MG SRCTZD & GRTTY AS ABOVE SHP 80 CONTACT TO VERY PURE FG QTE WITH ONLY MNOR SRCT AT 78.9 FT MVVW PY AS BLEBS & DSSMNTD 25-35 CPS | |
| 0086.0 | 7.1 | | QTE | FG LT GY AS OPPOSED TO PRVS DK GY SLCS & PURE ONLY MNOR SRCT & KSPR NOT GRTTY AS PRVS DSTNCT LTHCGCL CHANGE NU PY 25-35 CPS | 80 |
| 0089.3 | 2.3 | | QTE | FG TO MG SPDTAL BETWEEN GRTTY DK GY & PURE LT GY QTE GRDD BODNG WITH CG TO 88 FT BECOMING GRITTIER NO PY 25- 35 CPS | 75 |
| 0090.0 | 1.7 | | QTE | MG DK GY GRTTY AS 78.9 SCHSTSE & SRCTZD 2-3 MM QTZ & K-SPR GRNS WELL SORTED MATURE 25-35 CPS | 75 |
| 0097.3 | 7.3 | | QTE | MF DK GY GRTTY AS ABOVE 25-35 CPS | 75 |
| 0097.9 | 0.6 | | QTE | MG DK GY AS ABOVE BUT WITH POSSBLE 1 CM STRETCHED PEBBLES MAY BE QTZ VEINS SRCTZD NO RCTVTY 30 CPS | 75 |
| 0099.4 | 1.5 | | QTE | MG DK GY AS ABOVE GRTTY WELL SRTD & MATURE SHARP CONTACT TO PURE LT GY QTE AT 99.4 FT 25-35 CPS | 75 |
| 0099.7 | 0.3 | | QTE | LT GY PUREK & FG WITH PINK K-SPAR | 75 |

| DEPTH | LENGTH | MNZN | ROCK | DESCRIPTION | ANG |
|--------|--------|------|------|--|-----|
| | | | | 5 MM BLOBS PSSBL PHNCRYSTS FROM ALTERATION 25-35 CPS | |
| 0100.8 | 1.1 | LC | | LOST CORE | |
| 0101.5 | 0.7 | QTE | | LT GY FG TO MG AS 99.7 FT 25-35 CPS | 75 |
| 0102.7 | 1.2 | QTE | | FK GY MG GRITTY 1-3 MM QTZ & K-SPR GRNS WELL-SORTED SRTZD & SCHSTSE AS 99.4 FT 25-35 CPS | |
| 0104.0 | 1.3 | QTE | | FG TO MG LIGHTER GY GRADITIONAL TYPE SRTZD & SCHSTSE 25-35 CPS | 75 |
| 0109.0 | 5.0 | QTE | | FG TO MG LT GY TO DK GY AS 104.0 FT 25 TO 30 CPS | 75 |
| 0110.0 | 1.0 | QTE | | MG TO CG FEW 5 MM TO 1 CM QTZ PEBBLE S LT GY TO DK GY SLIGHTLY RDCV 30 TO 35 CPS | 75 |
| 0110.4 | 0.4 | QTE | | CG WITH 1 CM STRETCHED QTZ PEBBLES MEDIUM RDCV IN VERY NARROW 1 INCH ZONE MATRIX SIMILAR TO PREVIOUS 50-66 CPS | 75 |
| 0113.3 | 2.9 | QTE | | MG DK GY GRITTY SRTZD & SCHSTD 1 MM TO 3 MM QTZ & K-SPAR GRAINS WELL SORTED & MATURE BACKGROUND 25-35 CPS | 75 |
| 0114.1 | 0.8 | QTE | | MG DK GY GRITTY AS PREVIOUS BUT WITH 1 TO 2 CM K-SPAR BLCBS PSSBL PHNCRST 30 CPS | 75 |
| 0118.9 | 4.8 | QTE | | MG DK GY GRITTY SRTZD AS 113.3 FT 25-35 CPS | |
| 0119.8 | 0.9 | QTE | | MG DK GY GRITTY AS 118.9 BUT WITH 1 CM PSSBL STRETCHED QTZ PEBBLES NO RDCV 25-35 CPS | |
| 0125.0 | 5.2 | QTE | | MG DK GY GRITTY AS 118.9 FT WLL SRTD & MATURE 25 TO 35 CPS | 75 |
| 0130.0 | 5.0 | QTE | | MG LT GY TO DK GY GRITTY SIMILAR TO PREVIOUS MNOR LT & DK BNONG PSSBLY DUE TO SILTY CONTAMINATION 25-35 CPS | 80 |
| 0141.0 | 11.0 | QTE | | MG & LT GY GRITTY AS PRVS SLLY BNDD 25 TO 35 CPS FOOT OF HOLE | 80 |

BOREHOLE RECORD #27 - Sudbury

DATE PROCESSED MAY 06, 1976

BOREHOLE# 54035-0 PROPERTY AGNEW LAKE NTS# 411-S SH# ANOM# DEPTH 00271 AZIMUTH 289 00 GRID B. 31500 DIP -55 00 ELEV 0865 LATITUDE S001100 DEPARTURE E001600

CHK'D.....

DATE.....

INCLINATION AND TROPARI TESTS

DEPTH AZIMUTH DIP DEPTH AZIMUTH DIP DEPTH AZIMUTH DIP DEPTH AZIMUTH DIP
 0045 -55 30 0271 -45 30

COMMENTS

LOGGED BY..R L HORST STARTED..MAR 04, 1976 COMPLETED..MAR 06, 1976
 DRLLD EX BY CANICO L-24 GAS CLAIM S-359577 HYMAN TOWNSHIP AS
 54034 BUT STEEPENED 5 DEGREES

SAMPLE ENTRIES

| DEPTH | LENGTH | MNZN | ROCK | DESCRIPTION | ANG |
|--------|--------|------|------|---|-----|
| 0000.0 | 0.0 | | | COLLAR | |
| 0043.0 | 43.0 | | | OVERBURDEN TO 43 FT & CSNG TO 45 FT | |
| 0050.0 | 7.0 | | QTE | | |
| 0060.0 | 10.0 | | QTE | DK GY MG GRITTY 1-3 MM GRNS QTZ & K-SPAR WELL-SORTED & MATURE SRCTZD & SLIGHTLY SCHSTD BDDNG SUBPRLL TO SCHSTSY MNOR BDDG BUT BEDS 5 FT 25-35 CPS | 80 |
| 0063.2 | 3.2 | | QTE | DK GY MG GRITTY AS 60.0 FT BECOMING MORE SLCS 25-35 CPS | 80 |
| 0065.8 | 2.6 | MVVM | QTE | LT GY MG GRITTY 85-90% QTZ GRNS 1 TO 3 MM SRCTZD & SCHSTD WITH BLEBS & DSSPNTNS PY 2% 25-35 CPS | 80 |
| 0070.0 | 4.2 | | QTE | DK GY MG GRITTY AS 60.0 FT BECMNG SLIGHTLY MORE CG SCHSTD & SRCTZD AS PKVS 25-35 CPS | 75 |
| 0076.2 | 6.2 | | QTE | DK GY MG GRITTY AS 70.0 FT 25-35 CPS | 80 |
| 0080.0 | 3.8 | | QTE | LT GY FG TO MG GRITTY AS 65.8 FT PURER THAN PRVS 85-90% QTZ & LESS SRCTZD 25-35 CPS | 80 |
| 0085.8 | 5.8 | | QTE | DK GY MG GRITTY AS 70.0 FT 25-35 CPS | 80 |
| 0091.0 | 5.2 | | QTE | LT GY MG GRITTY WELL ROUNDED 1-3 MM QTZ & K-SPAR GRNS AS PRVS SRCTZD & SCHSTD 25-30 CPS | 80 |
| 0091.9 | 0.9 | | QTE | LT GY MG GRITTY AS 91.0 FT BUT WITH K-SPAR ALTERATION 1-2 CM BLOTCHES PK 25-35 CPS | 80 |
| 0094.5 | 2.6 | | QTE | DK GY MG GRITTY AS 85.8 WELL-SORTED & MATURE 25-35 CPS | 80 |
| 0098.8 | 4.3 | | QTE | LT GY FG TO MG PURER 85-95% QTZ & LESS SRCT MNOR 5 MM QTZ VEINLETS & SOME PSSBLG STRCHD QTZ PEBBLES NO RDCVTY 25-35 CPS | 80 |
| 0101.7 | 2.9 | | QTE | DK GY MG GRITTY 80% QTZ 10% K-SPR & 10% SRCT AS 94.5 FT 25-35 CPS | 80 |
| 0102.5 | 0.8 | | LC | LOST CORE | |
| 0104.3 | 1.8 | | QTE | DK GY MG GRITTY AS 101.7 FT 25-35 CPS | 80 |
| 0104.8 | 0.5 | | LC | LOST CORE | |

| DEPTH | LENGTH | MNZN | ROCK | DESCRIPTION | ANG |
|--------|--------|------|------|--|-----|
| 0106.8 | 2.0 | | QTE | DK GY MG GRITTY AS PRVS 25-35 CPS | |
| 0107.6 | 0.8 | | QTE | DK GY MG GRITTY AS PRVS BUT WITH 1-2 CM PK K-SPAR BLOTCHS 25-35 CPS | |
| 0112.0 | 4.4 | | QTE | DK GY MG GRITTY AS PRVS AT 106.8 FT WELL-SORTED & MATURE 25-35 CPS MORE SRCTZD | 80 |
| 0112.9 | 0.9 | | QTE | DK GY MG GRITTY & SRCTZD AS PRVS BUT WITH PK K-SPAR ALTERATION 25-35 CPS | 80 |
| 0120.9 | 8.0 | | QTE | DK GY MG GRITTY AS PRVS WITH LOCAL PK K-SPR VEINING 1 CM SCALE WELL-ROU NDED WELL SORTED & MATURE 25-35 CPS | 80 |
| 0123.8 | 2.9 | | QTE | DK GY MG GRITTY AS PRVS LITTLE K-SPR VEINING 25-35 CPS | 80 |
| 0125.8 | 2.0 | | LC | LOST CORE | |
| 0133.8 | 8.0 | | QTE | DK GY MG GRITTY AS PRVS WELL-SORTED & MATURE 25-35 CPS | 80 |
| 0134.2 | 0.4 | MVVW | CGL | QTZ PEBBLES 2-3CM BY 1 CM STRETCHED IN MG GY QTE PY VEINLETS 2 MM ALNG SCHSTSTY & BDDNG 1% NO RDCV 30 CPS | 80 |
| 0138.5 | 4.3 | | QTE | DK GY MG GRITTY AS PRVS 25-35 CPS | 80 |
| 0145.0 | 6.5 | | QTE | DK GY TO LT GY MORE MATURE QTZ RICH & LESS SRCT 25-35 CPS | |
| 0146.7 | 1.7 | | QTE | LT GY PURER THAN PRVS 90% QTZ 1-3MM RNDG GRNS MATURE SNDS 25-35 CPS | 75 |
| 0150.0 | 3.3 | | QTE | DK GY TO LT GY MG MATURE META-SNDS MNOR 2 MM QTZ UNLTS SRCTZD & SCHSTD 25-35 CPS | 75 |
| 0155.0 | 5.0 | | QTE | DK GY TO LT GY MG TO CG BECOMING LSS SRTD MNOR QTZ VEINLETS 25-35 CPS | 75 |
| 0160.0 | 5.0 | MVVW | QTE | DK GY TO LT GY MG SMLR TO 155.0 FT VERY MNOR PY NO RDCV 25-35 CPS | 75 |
| 0165.0 | 5.0 | | QTE | AS 160.0 FT 25-40 CPS RDCV INCRSNG VRY SLGHTLY | 75 |
| 0166.5 | 1.5 | | QTE | MG DK GY TO LT GY 1-3 MM ROUNDED QTZ K-SPR GRNS IN SRCT GRNDMSS WELL SRTD & MTR RDCV INCRSNG 40-48 CPS | 75 |
| 0168.6 | 2.1 | | QTE | MG DK GY TO LT GY AS 166.5 FT BUT LSS RDCV 30-35 CPS | 75 |
| 0169.5 | 0.9 | | CGL | 1-2 CM STRETCHED QTZ PBL IN MG DK GY TO LT GY QTE MTRX SLGHT URNM HIGH 35 CPS | 75 |
| 0172.1 | 2.6 | | QTE | MG DK GY TO LT GY AS 166.5 FT BCKGND 30-35 CPS | 75 |
| 0172.9 | 0.8 | | QTE | AS 172.0 FT BUT SLGHT RDCV HIGH 45-48 CPS | 75 |
| 0175.0 | 2.1 | | QTE | MG DK GY TO LT GY 1-3 MM QTZ K-SPR GRNS SRCTZD & SCHSTS BCKGRND 33-38 CPS | 75 |
| 0175.6 | 0.6 | MVVW | QTE | MG DK GY TO LT GY WITH MNOR 5 MM QTZ PBLBLS STRNGLY RDCV & 1% DSSMNTD PY 75-155 CPS | 75 |
| 0177.0 | 1.4 | MVW | CGL | 1-2 CM STRCHD QTZ PBLBLS IN DK GY TO LT GY MG QTE MTRX VERY STRNGLY RDCV WITH 5-10% PY DSSMNTD & ALONG SCHST PSSBLY FRMBDL 200-605 CPS | 75 |

| DEPTH | LENGTH | MNZN | ROCK | DESCRIPTION | ANG |
|--------|--------|------|------|--|-----|
| 0177.6 | 0.6 | | QTE | MG DK GY TO LT GY AS 175.6 FT 75-200 CPS | 75 |
| 0178.7 | 1.1 | | QTE | MG DK GY TO LT GY AS 177.6 BUT LSS RDCV 37-75 CPS | 75 |
| 0185.0 | 6.3 | | QTE | AS PRVS MG DK GY TO LT GY BCKGRND RDCV 30-40 CPS | 75 |
| 0189.0 | 4.0 | | QTE | MG DK GY TO LT GY 1-3 MM RND QTZ K-SPR GRNS MTR & WLL SRTD 30-40 CPS | 75 |
| 0190.0 | 1.0 | MVVW | QTE | AS 189.0 FT BUT 1% DSSMNTD PY & SLGHT RDCV HIGH 35-55 CPS | 75 |
| 0195.0 | 5.0 | | QTE | MG DK GY TO LT GY AS 189.0 FT BCKGRD RDCV 35-45 CPS | 75 |
| 0197.0 | 2.0 | MVVW | QTE | DK GY TO LT GY MG META-SNDS AS PRVS MTR SLIGHTLY RDCV 35-45 CPS 1% PY | 75 |
| 0198.6 | 1.6 | MVVW | CGL | 1-2 CM QTZ PBBL & PSSBL QTZ VEINS IN MG DK GY QTE MTRX MDRT RDCV 1% PY PBBL STRTCHD ALNG SCHSTSTY 40-75 CPS | 75 |
| 0201.0 | 2.4 | | QTE | DK GY TO LT GY MG META-SNDS AS PRVS BCKGRND RDCV 35-40 CPS | 75 |
| 0202.5 | 1.5 | MVVW | CGL | 1-2 CM STRETCHED QTZ PBBL ALONG SCHISTOSITY IN DK GY MG QTE MATRIX MDRT RDCV MVVW DSSMNTD PY 40-80 CPS | 70 |
| 0204.0 | 1.5 | | QTE | DK GY MG 1-3 MM QTZ GRNS SRTD & SCHSTD SMLR PRVS LOW RDCV 35-48 CPS | 70 |
| 0205.0 | 1.0 | MVVW | CGL | RARE 1-2 CM QTZ PBBL STRTCHD ALONG SCHSTSTY IN MG GY QTE SIMILAR TO 202 .5 FT MVVW DSSMNTD PY 48-66 CPS | 70 |
| 0207.0 | 2.0 | | QTE | DK GY TO LT GY MG WLL SRTD AS PRVS BCKGRND RDCV 30-35 CPS | 70 |
| 0208.0 | 1.0 | | QTE | AS 207.0 FT BUT SLGHT RDCV HIGH & MGR CG 35-45 CPS | 70 |
| 0213.0 | 5.0 | | QTE | DK GY MG SRTD MTR AS 207.0 FT SRTD & SCHSTD 30-35 CPS | 70 |
| 0214.0 | 1.0 | | QTE | MG DK GY SRTD MTR AS 213 FT WITH RDCV & CG 35-45 CPS | 70 |
| 0219.0 | 5.0 | | QTE | MG DK GY SRTD MTR META-SNDS AS PRVS 30-35 CPS | 70 |
| 0220.0 | 1.0 | | QTE | AS PRVS BUT SLIGHTLY RDCV 35-40 CPS | 70 |
| 0223.0 | 3.0 | | QTE | AS PRVS BCKGRND RDCV 25-30 CPS | 70 |
| 0224.5 | 1.5 | | CGL | 1-2 CM SBRND QTZ PBBL STRTCHD ON SCHSTSTY NOT AS MATURE AS PRVS CGLS NO PY & BCKGRND RDCV 30-35 CPS | 70 |
| 0230.0 | 5.5 | | QTE | MG DK GY 1-3 MM QTZ FLDSR GRNS IN SCHSTD SRTD MTRX SRTD & MTR BCKGRND RDCV 25-30 CPS | 70 |
| 0231.5 | 1.5 | | QTE | MG DK GY AS 230.0 FT 30-40 CPS | 70 |
| 0235.0 | 3.5 | MVVW | CGL | 1-2 CM BY 5 MM STRTCHD QTZ PBBL ON SCHSTSTY IN MG SRTD QTE MTRX MDRT RDCV 1% DSSMNTD PY 40-80 CPS | 70 |
| 0240.0 | 5.0 | | QTE | MG DK GY SRTD MTR AS PRVS 30-35 CPS | 70 |
| 0242.0 | 2.0 | | QTE | MG DK GY SRTD MTR AS PRVS 25-40 CPS | 70 |
| 0244.0 | 2.0 | | QTE | MG-CG LT GY TO DK GY MORE RDCV THAN 242 35-50 CPS | 70 |

BOREHOLE RECORD # 27-Subury

DATE PROCESSED MAY 06, 1976

BOREHOLE# 54038-0 PROPERTY AGNEW LAKE NTS# 4115 SH# ANUM# DEPTH 00220 AZIMUTH 289 00 GRID B. 31500 DIP -87 00 ELEV 0870 LATITUDE 5000655 DEPARTURE E002375 DATE.....

INCLINATION AND TROPARI TESTS

DEPTH AZIMUTH DIP DEPTH AZIMUTH DIP DEPTH AZIMUTH DIP DEPTH AZIMUTH DIP
 0100 -84 30 0200 -80 30

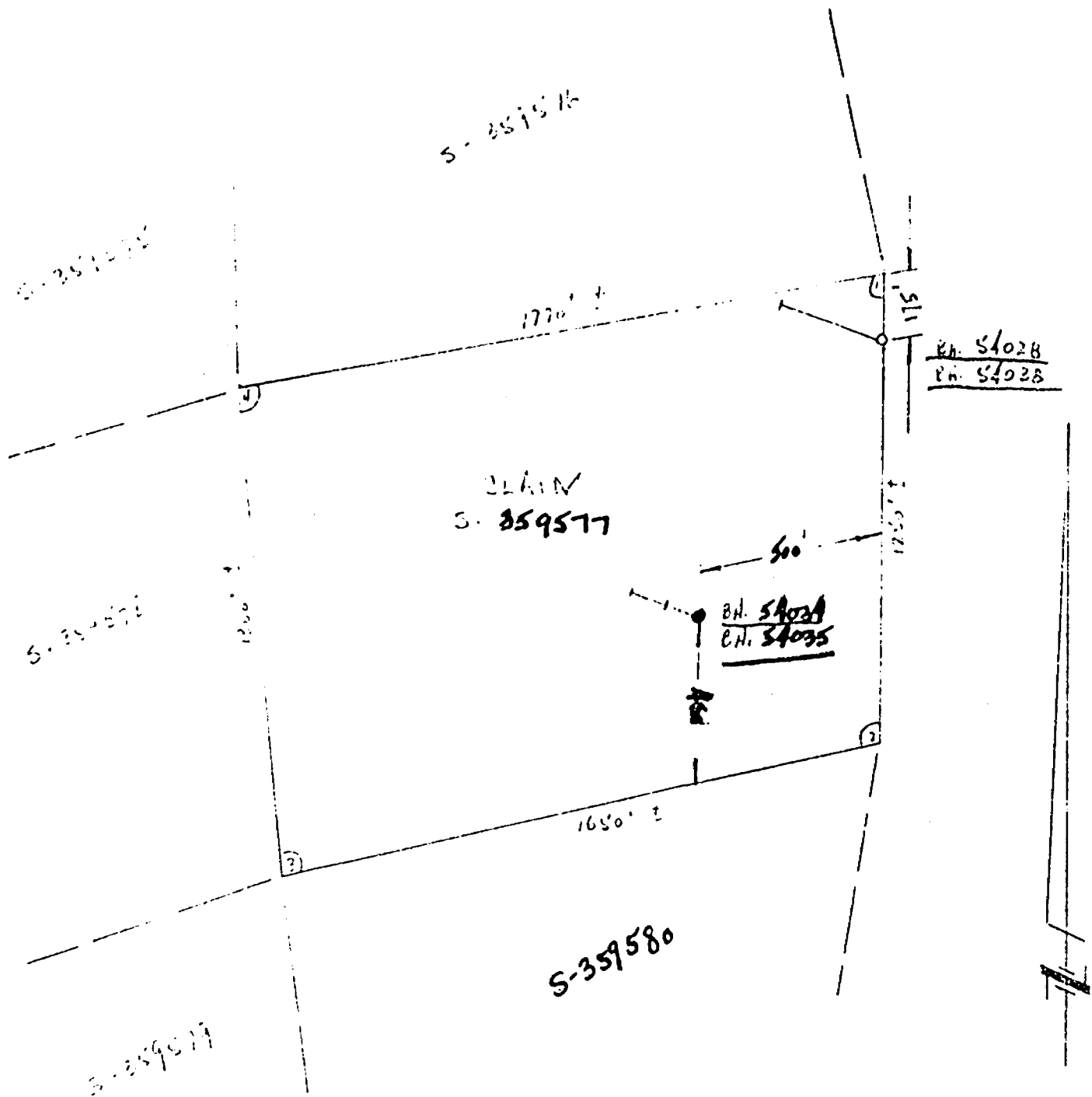
COMMENTS

LOGGED BY..W.O.HANSON STARTED..MAR 17,1976 COMPLETED..MAR 18,1976
 DRILLED AX BY CANICO L-24GAS CLAIM S-359577 ON LOT 12 CON I OF
 HYMAN TWP

SAMPLE ENTRIES

| DEPTH | LENGTH | MNZN | ROCK | DESCRIPTION | ANG |
|--------|--------|------|------|--|----------|
| 0000.0 | 0.0 | | | COLLAR | |
| 0007.0 | 7.0 | | | OVERBURDEN SOC AW CSG TO 8 FT | |
| 0016.0 | 9.0 | QTE | | FG-MG GY GRITTY QTE WKLY FSPC WITH ABNT CLASTS OF WELL ROUNDED QTZ GRAI NS 2-3MM WHICH ARE SLLY STRETCHED PLL TO FOTN 10-15 PCNT SRCT ALONG SHRG FOTN IS POORLY DEVELOPED TO VAG UE AND ORIGINAL BEDS APPEAR TO HAVE BEEN QUITE MASSIVE OFTEN VAGUELY BND ED ALONG DARKER BANDS WHICH CONTAIN MINOR BIOT AND COULD BE A PRIMARY BEDDING FEATURE 30-40 CPS | 30 |
| 0018.5 | 2.5 | QTE | | AS ABOVE AT 16.0 30-45 CPS WK RDCV IN BH | 35 |
| 0020.0 | 1.5 | QTE | | AS ABOVE AT 16.0 30-45 CPS | 35 |
| 0036.0 | 16.0 | QTE | | AS ABOVE AT 16.0 30-40 CPS | 35 |
| 0038.0 | 2.0 | QTE | | AS ABOVE AT 16.0 30-45 CPS WKLY RDCV IN BH | 45 |
| 0046.0 | 6.0 | QTE | | AS ABOVE AT 16.0 RARE PBL 2-3 MM 30- 40 CPS | 40 |
| 0047.0 | 3.0 | QTE | | AS ABOVE AT 16.0 LT GY VERY GRITTY WKLY SHRD 30-40 CPS | 45 |
| 0049.0 | 2.0 | QTE | | FG-MG DK GY VERY GRITTY WITH ABNT QT Z CLASTS 1-3MM IN FG MTX WHICH IS QU ITE DIRTY WITH NURS IRREGULARLY DISS GRAINS BIOT ONLY WKLY SHRD WITH SRCT ALONG SHRG 45-108 CPS | 45 30 |
| 0054.0 | 5.0 | QTE | | AS ABOVE AT 16.0 30-40 CPS | 30 |
| 0060.0 | 6.0 | QTE | | AS ABOVE AT 16.0 30-40 CPS RARE SPK PY | 35 |
| 0061.0 | 1.0 | QTE | | FG-MG LT GY TO LCLY SLLY REDDISH STK S ALONG SHRG POSS MEM ALTN AFTER PY VERY GRITTY AND WKLY FRCTD OBLIQUE TO FOTN 35-45 WKLY RDCV IN BH | 35 |
| 0064.0 | 3.0 | QTE | | AS AT 61.0 VERY GRITTY STGLY FRACTUR ED AND BPOKEN WITH STG SHRG AND ABNT SRCT RARE QTZ VEIN TO 5MM ALONG FRAC TURING 10 PCNT LOST CORE 30-45 CPS WKLY RDCV IN BH | 25 20 |

| DEPTH | LENGTH | MNZN | ROCK | DESCRIPTION | ANG |
|--------|--------|------|--|-------------|-----|
| 0074.0 | 10.0 | QTE | FG-MG LT GY TO SLLY YELLOWISH VERY GRITTY AND STRONGLY SHRD WITH ABNT SRCT ALONG SHRG WKLY FSPC AND GEN A CLEAN GRITTY MG QTE 30-40 CPS | 35 | 40 |
| 0077.0 | 3.0 | QTE | FG LT GY WKLY GRITTY HLY SHRD WIT AB NT SRCT VAGUELY BANDED 30-40 CPS BUT WKLY RDCV IN BH | 40 | |
| 0105.0 | 28.0 | QTE | FG-MG LT GY GEN GRITTY WITH ABNT QTZ CLASTS 1-2MM IN FG QTZ-SRCT MTX RAKE VAGUE BANDING THAT PROB REFLECTS ORIGINAL BEDDING FEATURES LCLY VFG 92.0 TO 93.5 OCC SMALL QTZ FILLED FRACTURE 2-4MM 3CM QTZ VEIN AT 87.4 30-40 CPS LCT IS FW CONTACT AND IS KNIFE SHARP AT 45 DEGREES | 50 | 40 |
| 0110.5 | 5.5 | SCH | BIOT SCH WITH UP TO 20 PCNT FG QTZ AND MINOR FSP VERY SCSS AND LCLY CNR D 25-35 CPS | 40 | 45 |
| 0119.7 | 9.2 | SCH | AS AT 110.5 WITH OCC QTZ PBL 1-3CM HLY SHR DCC GAR 5-6MM AND RARE STK PY ALONG SHRG GAR PARTIALLY ALTERED TO CHL 25-35 CPS | 45 | |
| 0138.7 | 19.0 | BSLT | FG-MG HLY SHR D AND ALTERED META BSLT FG CHL MTX WITH PORPHYROBLASTS OF HB L 1-3MM HAVING RANDOM ORIENTATION AND ABNT GAR 3-4MM WITH CHL ALTN RIMS 25-35 CPS RARE SPKS DISS PY-CP(Q) FCIN IS VAGUE | 45 | |
| 0190.0 | 51.3 | GWKE | FG-MG DK GY-BLK MAFIC GWKE QTZ-BIOT-AMPB PROB OF VOLC DERIVATION WKLY FD TO WITH ABNT GAR 2-3 MM RARE QTZ VEIN 2-4MM NO PRIMARY SED FEATURES OBSERVED AMPB GRAINS OCCUR AT RANDOMLY DRND GRS TO POORLY DRND GRS 25-35CPS | 45 | 40 |
| 0203.3 | 13.3 | SCH | FG DK GY BIOT SCH AS AT 110.5 WITH NMRS QTZ STR 1-2CM MINOR CHL AND SRC T AND SOME DRND AMPB GRS NMRS GAR WITH CHL ALTN RIMS 25-35 CPS | 35 | 45 |
| 0220.0 | 16.7 | GWKE | AS ABOVE AT 190.0 25-35 CPS FOOT OF HOLE | | 45 |



Location: Street
 Parcels: 54026; 54034; 54025; 54038
 Defined in Ct. S-359577
 Hyman Township in 1927
 Survey: MINING DIVISION
 Scale: 1 inch = 400 ft



BOREHOLE RECCRD

DATE PROCESSED MAY 06, 1976

| BOREHOLE# | PROPERTY | NTS# | SH# | ANOM# | DEPTH | AZIMUTH | GRID B. | DIP | ELEV | LATITUDE | DEPARTURE | CHK#D..... |
|-----------|------------|------|-----|-------|-------|---------|---------|--------|------|----------|-----------|------------|
| 54033-0 | AGNEW LAKE | 411S | | | 00650 | 155 00 | 18000 | -45 00 | 0903 | N001170 | E001200 | DATE..... |

INCLINATION AND TROPARI TESTS

| DEPTH | AZIMUTH | DIP | DEPTH | AZIMUTH | DIP | DEPTH | AZIMUTH | DIP | DEPTH | AZIMUTH | DIP |
|-------|---------|--------|-------|---------|--------|-------|---------|--------|-------|---------|--------|
| 0100 | | -45 00 | 0200 | | -34 00 | 0300 | | -28 30 | 0400 | | -26 00 |
| 0480 | | -19 00 | 0610 | | -09 00 | | | | | | |

COMMENTS

LOGGED BY..W.O. MANSON STARTED..FEB 22, 1976 COMPLETED..FEB 29, 1976
 DRILLED EX CORE BY CANICO L-24 GAS ON CLAIM S-359575 IN LOT 12
 CON IT OF HYMAN TWP AW CSG TO 83 EW TO 98

SAMPLE ENTRIES

| DEPTH | LENGTH | MNZN | ROCK | DESCRIPTION | ANG |
|--------|--------|------|------|---|-----|
| 0000.0 | 0.0 | | | COLLAR | |
| 0090.0 | 90.0 | | | OVERBURDEN SOC AW CSG TO 83 EW TO 98 | |
| 0110.0 | 20.0 | AGLT | | FG GY WELL DEVELOPED FOTN STGLY SCHI 20 STOSE GENERALLY SLLY SILTY AVGE GRAI N SIZE IS MUCH LESS THAN IMM ABNT SRCT AND CHL ALONG SHRG WITH 25-35 PCNT VFG QTZ RARE SHEAR OF PY ALONG SHR PLANES 30-40 CPS | |
| 0111.0 | 1.0 | LC | | GROUND CORE | |
| 0115.3 | 4.3 | AGLT | | AS AT 110.0 30-40 CPS | 30 |
| 0117.2 | 1.9 | LC | | GROUND CORE | |
| 0120.0 | 2.8 | AGLT | | AS AT 110.0 30-40 CPS | 30 |
| 0120.9 | 0.9 | LC | | GROUND CORE | |
| 0140.5 | 19.6 | AGLT | | AS AT 110.0 30-40 CPS | 35 |
| 0141.3 | 0.8 | LC | | GROUND CORE | |
| 0163.8 | 22.5 | AGLT | | AS AT 110.0 30-40 CPS | 40 |
| 0165.0 | 1.2 | LC | | GROUND CORE | |
| 0171.0 | 6.0 | AGLT | | AS AT 110.0 30-40 CPS | 45 |
| 0204.0 | 33.0 | SLST | | VFG GY AGLC WELL FOTO SLLY SCHISTOSE 40 QTZ AND SRCT RICH WITH SOME CHL RARE CLAST FSP-QTZ TO 0.5MM GRAIN SIZE IS COMMONLY MUCH LESS THAN IMM SHRG HAS OBLITERATED ANY PRIM.RY SED FEATURES THIS UNIT IS GRCL OVER SEVERAL FEET FROM THE AGLT ABOVE 30-40 CPS | 50 |
| 0204.6 | 0.6 | LC | | GROUND CORE | |
| 0257.2 | 52.6 | SLST | | AS AT 204.0 30-40 CPS RARE SHEAR PY ON SHR PLANES | 65 |
| 0258.7 | 1.5 | LC | | GROUND CORE | |
| 0261.7 | 3.0 | SLST | | AS AT 204.0 30-40 CPS | 65 |
| 0263.2 | 1.5 | LC | | GROUND CORE | |
| 0308.0 | 44.8 | SLST | | AS AT 204.0 30-40 CPS | 65 |
| 0309.0 | 1.0 | LC | | GROUND CORE | |
| 0356.7 | 47.7 | SLST | | AS AT 204.0 30-40 CPS | 65 |
| 0363.0 | 6.3 | SLST | | AS AT 204.0 30-40 CPS 20 PCNT GC | 65 |
| 0395.0 | 32.0 | SLST | | AS AT 204.0 30-40 CPS | |
| 0395.6 | 0.6 | LC | | GROUND CORE | |
| 0396.6 | 1.0 | BX | | FG GY BXD QTE NMRS FRMS OF GRITTY | |

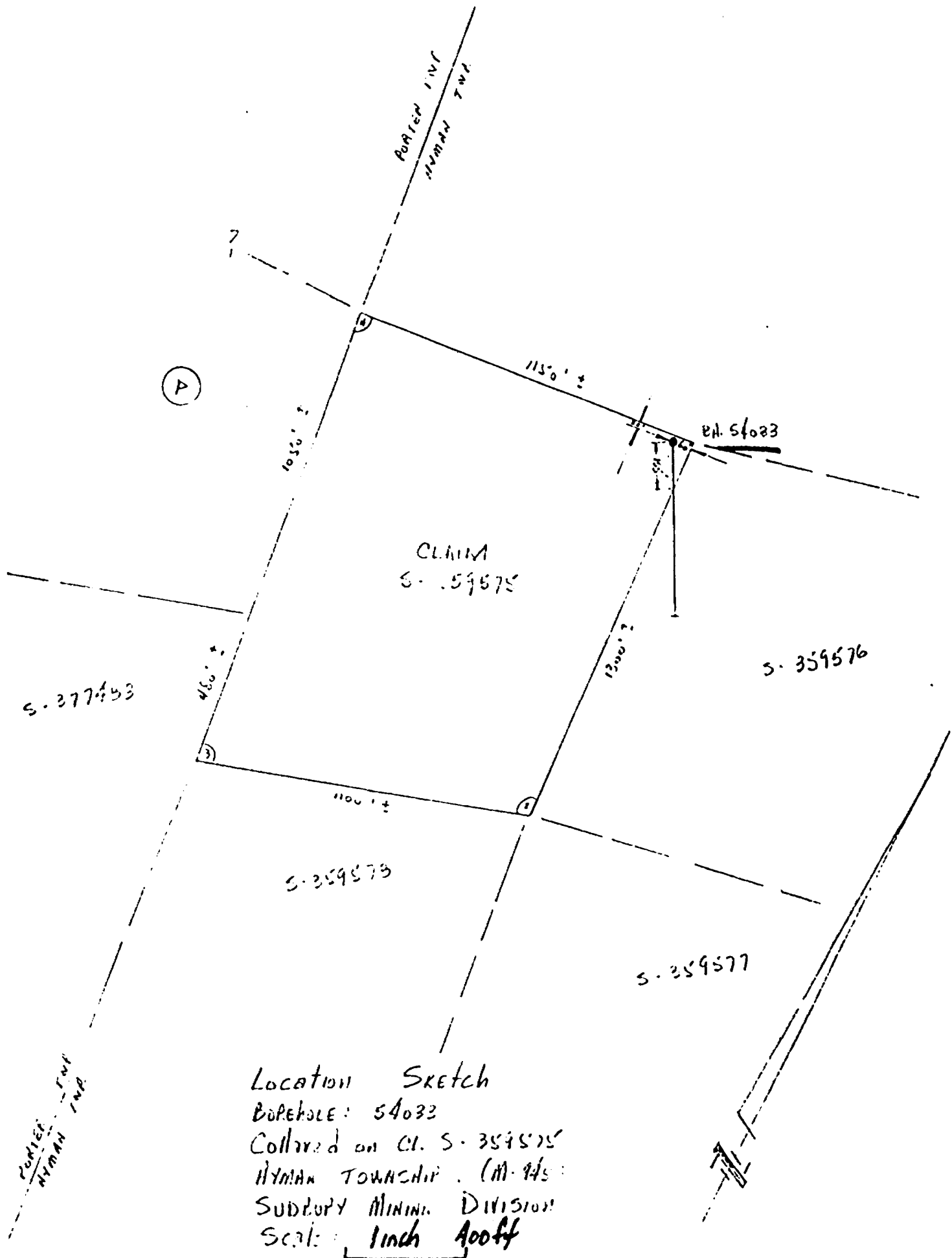
| DEPTH | LENGTH | MNZN | ROCK | DESCRIPTION | ANG |
|--------|--------|------|------|--|-----|
| | | | | FELDSPATHIC QTE CEMENTED BY VFG GY SILICEOUS RK FLOUR PROB FAULT ZONE | |
| 0405.6 | 9.0 | BX | | 40 PCNT GROUND CORE 30-40 CPS AS AT 396.6 WITH OCC VEINS WHITE QTZ BRECCIATION IS SOMEWHAT LESS INTENSE BUT RK IS VERY BROKEN AND SHATTERED GROUND CORE IS 75 PCNT 30-40 CPS | |
| 0407.0 | 1.4 | QTE | | FG-MG GRITTY FELDSPATHIC QTE SLLY REDDISH DUE TO MINOR HEM (O)STAINING STRONGLY SHRD WITH SUDD FOTN DUE TO SRCT DEVELOPMENT PLL TO SHRG LOCALLY HAS ENOUGH FSP GRAINS TO BE CONSIDER ED A SUB ARKOSE GENERALLY POORLY SORTED WITH SUB ROUNDED TO ANGULAR CLASTS IN THE FG MTX RARE QTZ VEIN TO 5MM CORE IS BADLY BROKEN AND FRAC TURED 30-60 CPS IN BH 25-35 CPS IN CORE | 55 |
| 0409.5 | 2.5 | QTE | | AS AT 407.0 25-35 CPS | 55 |
| 0410.0 | 0.5 | QTZ | | MASS WHITE VEIN QTZ WITH NMRS INCL BXD QTE 25-35 CPS | |
| 0412.9 | 2.9 | LC | | GROUND CORE | |
| 0416.0 | 3.1 | QTZ | | AS AT 419.0 25-35 CPS | |
| 0417.1 | 1.1 | LC | | GROUND CORE | |
| 0420.0 | 2.9 | QTE | | AS AT 407.0 25-35 CPS | 60 |
| 0420.5 | 0.5 | LC | | GROUND CORE | |
| 0423.0 | 2.5 | QTE | | AS AT 407.0 25-35 IN CORE 35-75 CPS IN BH | |
| 0434.0 | 11.0 | QTE | | AS AT 407.0 25-35 | 65 |
| 0435.4 | 1.4 | LC | | GROUND CORE | |
| 0442.0 | 6.6 | QTE | | FG-MG LT GY TO LT PK QTZ-FSP SUB ARK GRITTY WKLY TO VAGUELY BANDED WITH ALT BNS LT PK AND LT GY OCC QTZ VEI N TO 5 MM PRONCUNED SHRG ABNT SRCT ALONG SHRG QTZ IS 65 PCNT OF THE RK CORE IS LCLY HLY FRACTURED WITH UP TO 40 PCNT GC IN THESE BROKEN ZONES 30-40 CPS | 65 |
| 0445.0 | 3.0 | QTE | | AS AT 442.0 30-40 CPS IN THE CORE 45-55 CPS IN THE BH | 65 |
| 0450.0 | 5.0 | QTE | | AS AT 442.0 30-40 CPS IN CORE 45-60 IN BH | 65 |
| 0455.0 | 5.0 | QTE | | AS AT 442.0 30-40 CPS IN CORE 45-85 IN BH | 65 |
| 0458.4 | 3.4 | QTE | | AS AT 442.0 30-40 CPS | 65 |
| 0460.0 | 1.6 | LC | | GROUND CORE | |
| 0469.0 | 9.0 | QTE | | AS AT 442.0 20 PCNT GC 30-40 CPS | |
| 0474.0 | 5.0 | QTE | | AS AT 442.0 30-40 CPS IN CORE 35-95 IN BH | |
| 0477.0 | 3.0 | QTE | | AS AT 442.0 30-40 CPS | |
| 0480.0 | 3.0 | LC | | GROUND CORE | |
| 0482.0 | 2.0 | QTE | | AS AT 442.0 30-40 CPS | 60 |
| 0485.0 | 1.0 | QTE | | FG-MG GRITTY FELDSPATHIC QTE POORLY SORT SUB ANGULAR TO POORLY ROUNDED CLASTS IN FG WELL SORTED MTX STGLY | 50 |

| DEPTH | LENGTH | MNZN | ROCK | DESCRIPTION | ANG |
|--------|--------|------|------|---|----------|
| | | | | SHRD WITH SRCT ALONG SHRG SLLY YELLO WISH DUE YG ABNT SRCT 30-40 CPS | |
| 0484.4 | 1.4 | QTE | | AS AT 483.0 WITH NMRS VEINS QTZ 1-2 CM TO 25 PCNT OF RK 30-40 CPS | 65 |
| 0485.8 | 1.4 | LC | | GROUND CORE | |
| 0488.9 | 3.1 | QTE | | AS AT 484.4 30-40 CPS | |
| 0503.8 | 14.9 | QTE | | AS AT 483.0 30-40 CPS 20 PCNT GROUND AND BROKEN CORE | 60 |
| 0505.0 | 1.2 | LC | | GROUND CORE | |
| 0508.0 | 3.0 | QTE | | AS AT 483.0 30-40 CPS RARE QTZ PBL | 60 |
| 0508.5 | 0.5 | LC | | GROUND CORE | |
| 0509.5 | 1.0 | QTE | | AS AT 483.0 30-90 CPS RARE QTZ PBL | 60 |
| 0512.4 | 2.9 | LC | | GROUND CORE | |
| 0513.2 | 0.8 | QTE | | FG-LT GY GRITTY SLLY SFPC WITH ABNT SRCT ALONG SHRG OCC QUESTIONABLE QTZ PBL 3MM X 5MM 30-40 CPS | 60 |
| 0515.0 | 1.8 | LC | | GROUND CORE | |
| 0517.5 | 2.5 | QTE | | AS AT 513.2 30-40 CPS | 65 |
| 0532.2 | 14.7 | LC | | GROUND CORE CEMENTED ZONE BADLY BRO KEN GROUND AND CAVING BADLY | |
| 0534.5 | 2.3 | QTE | | AS AT 513.2 CC PBL 3MMX5MM 30-40 CPS | 70 |
| 0538.5 | 4.0 | LC | | GROUND CORE | |
| 0540.0 | 1.5 | QTE | | AS AT 513.2 30-40 CPS | |
| 0544.0 | 4.0 | LC | | GROUND CORE | |
| 0545.0 | 1.0 | QTE | | AS AT 513.2 30-40 CPS | 70 |
| 0546.8 | 1.8 | LC | | GROUND CORE | |
| 0550.0 | 3.2 | QTE | | FG-MG LT GY WITH REDDISH STKS POSS DUE TO SHRD KSPAR GRAINS GRITTY AND SHRD WITH SRCT ALONG SHRG OCC QTZ CLAST 1-2 MM IN SRCT QTZ MTX OVERALL THE RK IS A FAIRLY CLEAN BUT POORLY SORTED | 70 70 |
| 0553.8 | 3.8 | QTE | | AS AT 550.0 30-40CPS | 70 |
| 0555.0 | 1.2 | LC | | GROUND CORE | |
| 0559.0 | 4.0 | QTE | | AS AT 550.0 30-40 CPS QTZ VEINS TO 5 CM ARE 10 PCNT OF RK | 70 |
| 0560.0 | 1.0 | LC | | GROUND CORE | |
| 0563.2 | 3.2 | QTE | | AS AT 550.0 BUT WITH SLLY PK COLOR 30-40 CPS | 65 |
| 0591.0 | 27.8 | QTE | | FG LT GY SLLY GRITTY STGLY SHRD WITH ABNT SRCT ALONG SHRG FSP TO 10 PCNT RARE QTZ CLAST 2-3MM OCC QTZ VEIN TO 1CM AT ANGLES OBLIQUE TO FOTN GEN FAIRLY CLEAN | 70 70 |
| 0601.4 | 10.4 | QTE | | AS AT 591.0 BUT DK GY AND VERY GRITT Y WITH ABNT DK GY QTZ CLAST TO 1MM 25-35 CPS | 65 70 |
| 0602.6 | 1.2 | SCH | | VFG SRCT SCH OCC PEG STR POSS ZONE OF INTENSLY SHRD | 75 75 |
| 0617.4 | 14.8 | QTE | | AS AT 601.4 25-35 CPS | 70 |
| 0619.0 | 1.6 | SCH | | VFG SRCT SCH LCT IS FW UNCONFORMITY THE RK IS PROUBLY SHRD AND ALTERED QTE THAT HAS UNDERGONE MOVEMENT ALON G THE PLANE OF THE UNCONFORMITY | 75 |

DEPTH LENGTH MNZN ROCK
0650.0 31.0

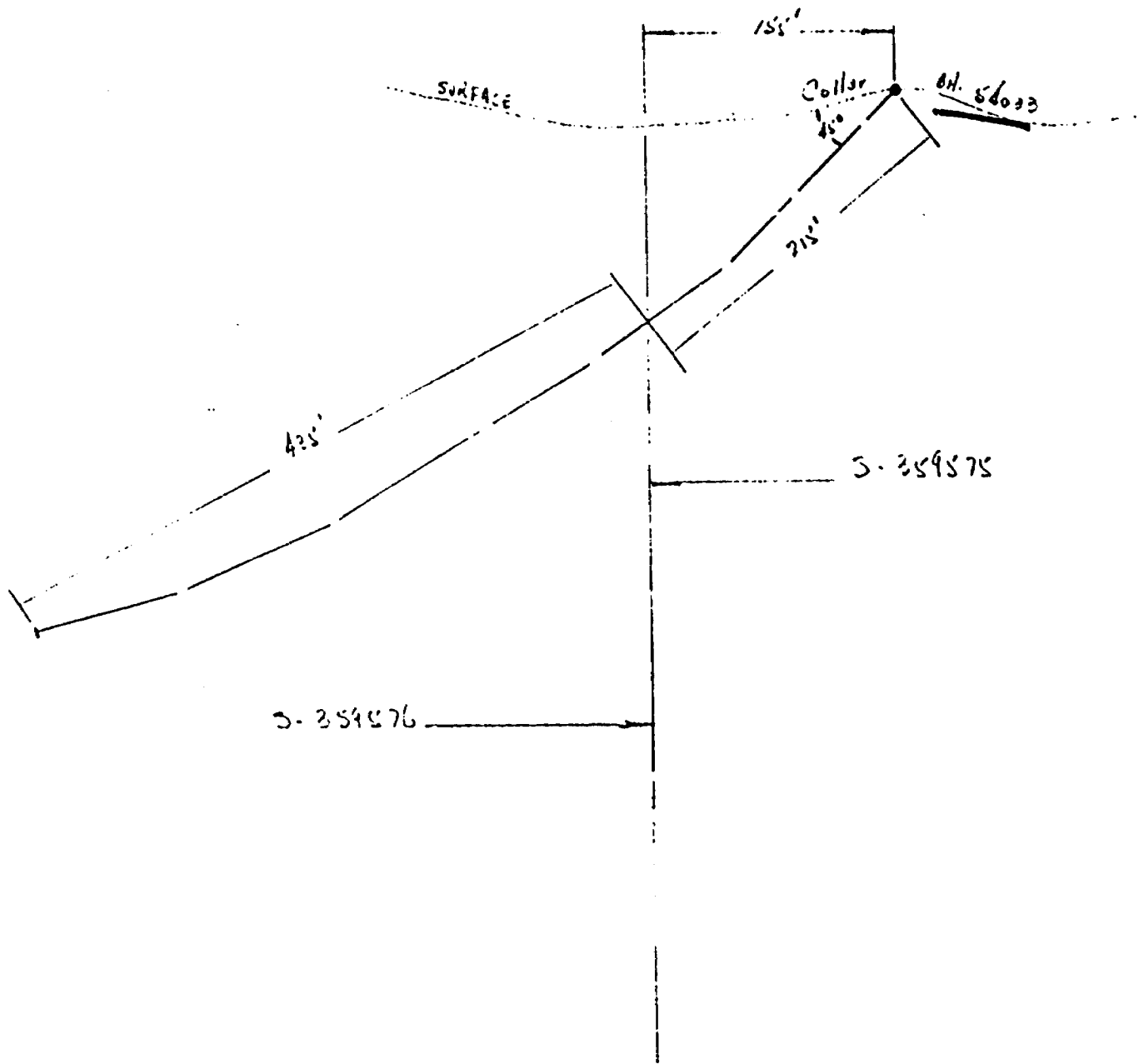
DESCRIPTION ANG

GNKE FG DK GY WELL FCTD CML BIOT SCH WITH
SOME VFC QTZ AND STKS SRCT LCLY CNRD
PROP A METASED WITH MATERIAL FROM
A SOURCE HIGH IN MAFIC MINERALS BEIN
G MIXED WITH QTZ-FSP MATERIAL DERIVE
D FROM A GRANITIC SOURCE OCC CLASTS
QTZ 2-3MM HLY SMRD RARELY VERY WKLY
BANDED WHICH MAY BE ORIGINAL SED FEA
TURE 25-35 CPS GC 619.0 TO 623.1
FOOT OF HOLE



Location Sketch

Borehole: 54033
 Collected on Cl. S. 359575
 HYMAN TOWNSHIP (M. 45)
 SUDBURY MINING DIVISION
 Scale: 1 inch 400 ft



SECTION PLAN
 BOREHOLE: 54033
 HYMAN TOWNSHIP (M 945)
 SUDBURY M.D.
 Scale: 1 inch = 100 ft.



BOREHOLE# 54039-0 PROPERTY AGNEW LAKE NTS# 4115 SH# ANDM# DEPTH 00286 AZIMUTH 244 GRID B. 00 27000 DIP -45 00 0985 ELEV 0985 LATITUDE N000400 DEPARTURE E002400

CHK'D.....

DATE.....

INCLINATION AND TROPARI TESTS

DEPTH AZIMUTH DIP DEPTH AZIMUTH DIP DEPTH AZIMUTH DIP DEPTH AZIMUTH DIP
 0100 -41 00 0200 -39 30 0285 -36 30

COMMENTS

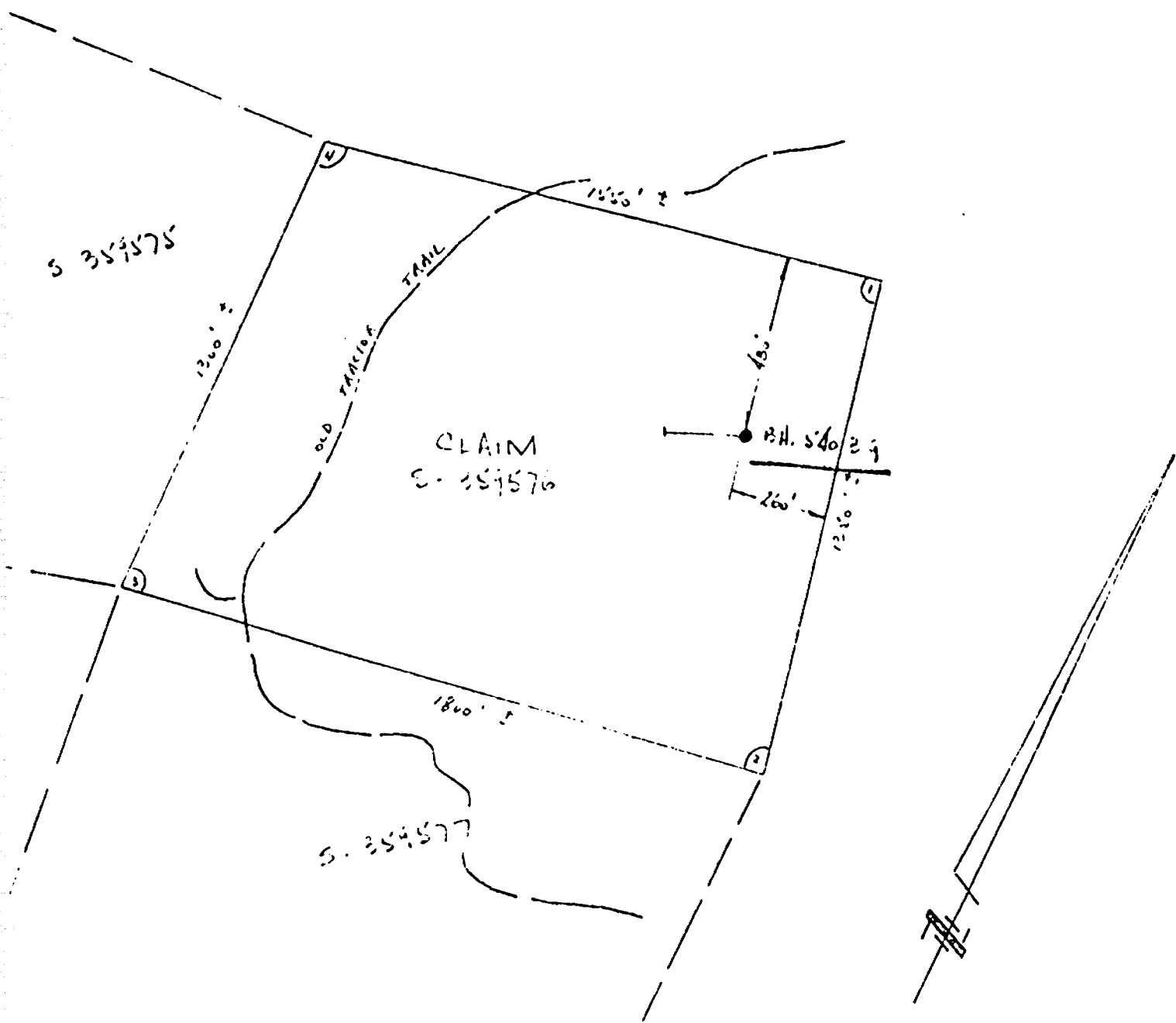
LOGGED BY: W.J. HANSON STARTED: MAR 21, 1976 COMPLETED: MAR 23, 1976
 DRILLED AX BY CANICO L-24 GAS ON CLAIM S-359576 IN LOT 12 CON
 II OF HYMAN TWP

SAMPLE ENTRIES

| DEPTH | LENGTH | MNZN | ROCK | DESCRIPTION | ANG |
|--------|--------|------|------|---|-----|
| 0000.0 | 0.0 | | | COLLAR | |
| 0004.0 | 4.0 | | | AW CSG THROUGH DB SOC CSG TO 8 FEET | |
| 0055.0 | 51.0 | QTE | | FG-MG LT GY TO BUFF OCC BND IS SLLY PK DUE TO KSPAR INCREASE GRITTY WITH QTZ GRS 1-3MM IN FG SRCT-QTZ MTX HLY SHRD WITH ABNT SRCT ALONG SHRG RARE QTZ VEIN TO 5MM VAGUELY THICK | 40 |
| 0058.0 | 3.0 | QTE | | AS AT 55.0 40-60 CPS, MED RDCV IN BH | 50 |
| 0069.1 | 11.1 | QTE | | AS AT 55.0 40-60 CPS RARE QTZ PBL TO 4-5MM | 45 |
| 0071.3 | 2.2 | SCH | | FG LT GRY SRCT SCH WITH LESS THAN 25 PCNT VFG QTZ 30-40 CPS POSS A SHR ZONE IN THE QTE | 45 |
| 0087.8 | 16.5 | QTE | | FG-MG GRITTY HLY SHRD WITH ABNT SRCT ALONG SHRG VARYING GY-LT GY LCLY WITH M NMRS YELLOW SPKS OF CRUSHED QTZ TH AT ARE STAINED BY IRON OXIDE CORE IS HLY FRACTURED AND BROKEN UP 25-40 CPS | 35 |
| 0088.4 | 0.6 | LC | | GROUND CORE | |
| 0090.0 | 1.6 | QTE | | AS AT 87.8 30-40 CPS | 35 |
| 0090.5 | 0.5 | GC | | GROUND CORE | |
| 0093.8 | 3.3 | CONG | | OPC HLY SHRD AND BXD NMRS QTZ PBL | 30 |
| 0095.0 | 1.2 | QTE | | IN FG QTE MTX PBL ARE STRETCHED AND BADLY BROKEN ABNT SRCT ALONG SHRG AN 0 NMRS STKS BRICK MED HEM ALONG SHR PLANES LCT IS SHP AT 45 APPEARS TO HAVE BEEN CONSIDERABLE MOVEMENT PLL TO THE BEDDING IN THIS ZONE PROB A SHRG ADJUSTMENT ALONG LEAST COMPETEN T BEDDING DURING FOLDING 30-40 CPS BUT IS DISTINCTLY RDCV IN THE BH | 45 |
| 0096.1 | 1.1 | LC | | GROUND CORE | |
| 0100.7 | 4.6 | QTE | | FG-LT GY TO SLLY YELLOW HLY SHRD TO INTENSELY SHRD LCLY SCSS WITH TO 60 PCNT SRCT 30-40 CPS | 45 |
| 0105.6 | 4.9 | LC | | GROUND CORE | |

| DEPTH | LENGTH | MNZN | ROCK | DESCRIPTION | ANG |
|--------|--------|------|---|--------------------------------------|-----|
| 0111.7 | 6.1 | QTE | FG-MG LT GY SLLY GRITTY HLY SHRD WIT 35 | H ABNT SRCT WKLY FSPC RARE VAGUE TO | |
| | | | | DOUDFUL QTZ PBL 5-10MM 25-45 CPS | 45 |
| 0112.3 | 0.6 | LC | GROUND CORE | | |
| 0119.8 | 7.5 | QTE | AS AT 111.7 25-45 CPS | | 45 |
| 0120.6 | 0.8 | LC | GROUND CORE | | |
| 0122.4 | 1.8 | SLST | VFG LT GY SCSS AGLC SLST HLY SHRD WI 40 | TH TO 60 PCNT SRCT AND MINOR BIOT | |
| | | | | 25-40 CPS | |
| 0123.7 | 1.3 | LC | GROUND CORE | | |
| 0125.2 | 1.5 | SLST | AS AT 122.4 25-40 CPS | | 40 |
| 0133.8 | 8.6 | QTE | AS ABOVE AT 111.7 25-35 CPS HLY FRCD | | 45 |
| 0134.2 | 0.4 | LC | GROUND CORE | | |
| 0139.3 | 5.1 | SLST | AS AT 122.4 25-35 CPS | | 45 |
| 0140.0 | 0.7 | LC | GROUND CORE | | |
| 0141.6 | 1.6 | SLST | AS AT 122.4 25-35 CPS | | 45 |
| 0143.5 | 1.9 | LC | GROUND CORE | | |
| 0145.7 | 2.2 | SLST | AS AT 122.4 FAULT ZONE OF MYLONITIC | MUD ICM AT 144.8 RARE QTZ PBL TO ZCM | 45 |
| | | | | 25-47 CPS | |
| 0150.0 | 4.3 | QTE | FG-MG LT GY-GY VAGUELY BNDG BY | BIOT RICH ZONES 1-3 MM THICK STGLY | 45 |
| | | | | SHRD WITH ABNT SRCT ALONG SHRG WKLY | |
| | | | | GRITTY VERY MINOR FSP 25-47 CPS | 50 |
| 0153.5 | 3.5 | QTE | AS AT 150.0 25-35 CPS | | 50 |
| 0155.0 | 1.5 | QTE | AS AT 150.0 30-50 CPS WK RDCY IN BH | | 50 |
| 0157.5 | 2.5 | QTE | AS AT 150.0 25-35 CPS | | 50 |
| 0173.5 | 16.0 | QTE | AS AT 150.0 30-45 CPS | | 50 |
| 0176.0 | 2.5 | QTE | AS AT 150.0 30-40 CPS | | 50 |
| 0178.5 | 2.5 | QTE | FG-MG GY VERY GRITTY ROUNDED QTZ GRS | 1-JMM ARE NOT UNCOMMON SRCT IS ABNT | 50 |
| | | | | ALONG MOD SHRG SLLY FSPC VAGUE BNDS | |
| | | | | THAT MAY REFLECT DRIG BDG 30-45 WKLY | |
| | | | | RDCV IN BH | |
| 0180.5 | 2.0 | QTE | AS AT 150.0 25-35 CPS | | 50 |
| 0190.0 | 9.5 | QTE | AS AT 150.0 25-40 CPS | | 50 |
| 0192.0 | 2.0 | QTE | AS AT 150.0 30-50 CPS | | 50 |
| 0194.0 | 2.0 | QTE | AS AT 150.0 40-50 CPS RDCV IN BH | | 50 |
| 0196.5 | 2.5 | QTE | AS AT 150.0 30-45 CPS | | 50 |
| 0199.5 | 3.0 | QTE | FG-MG LT GY-SLLY YELLOW DUE TO ABNT | | 45 |
| | | | | SRCT AND NO BIOT THE CT WITH QTE AT | |
| | | | | 196.5 IS SMP AND SHOWS DISTINCT COCO | |
| | | | | R CHANGE VERY GRITTY WKLY FSPC OCC | |
| | | | | ICM BND SLST 30-40 CPS RDCV IN BH | |
| 0202.4 | 2.9 | QTE | AS AT 199.5 30-40 CPS | | 45 |
| 0205.0 | 2.6 | QTE | AS AT 199.5 30-40 CPS | | 45 |
| 0207.0 | 2.0 | QTE | AS AT 199.5 25-35 WKLY RDCV IN BH | | 45 |
| 0209.5 | 2.5 | QTE | AS AT 199.5 25-35 CPS | | 45 |
| 0227.2 | 17.7 | QTE | AS AT 199.5 30-40 CPS | | 45 |
| 0228.5 | 1.3 | QTE | AS AT 199.5 55-65 CPS | | 45 |
| 0230.5 | 2.0 | QTE | AS AT 199.5 50-60 CPS | | 45 |
| 0231.9 | 1.4 | QTE | AS AT 199.5 65-100 CPS | | 45 |
| 0233.0 | 1.1 | QTE | AS AT 199.5 65-80 CPS | | 45 |
| 0235.9 | 2.9 | QTE | AS AT 199.5 65-110 CPS | | 45 |
| 0237.0 | 1.1 | QTE | AS AT 199.5 65-80 CPS | | 45 |

| DEPTH | LENGTH | MNZN | ROCK | DESCRIPTION | ANG |
|--------|--------|------|------|--|-----|
| 0238.7 | 1.7 | | QTE | AS AT 199.5 60-65 CPS | 50 |
| 0240.8 | 2.1 | | QTE | AS AT 199.5 60-115 CPS | 50 |
| 0243.0 | 2.2 | | QTE | FG-MG LT GY-GY GRITTY AND SHRD WITH SRCT ALONG SHRG RARE VAGUE TO ODDTF UL QTZ PBL 3-5MM MINOR SYKS BIOT SLL Y FSPC 75-85 CPS | 50 |
| 0245.5 | 2.5 | | QTE | AS AT 243.0 75-120 CPS | 50 |
| 0248.0 | 2.5 | | QTE | AS AT 243.0 60-70 CPS | 45 |
| 0250.0 | 2.0 | | QTE | AS AT 243.0 70-90 CPS | 45 |
| 0252.0 | 2.0 | | QTE | AS AT 243.0 70-135 CPS | 45 |
| 0255.0 | 3.0 | | QTE | AS AT 243.0 60-70 CPS | 45 |
| 0257.3 | 2.3 | | QTE | AS AT 243.0 80-170 CPS | 45 |
| 0259.5 | 2.2 | | QTE | AS AT 243.0 65-85 CPS | 45 |
| 0270.0 | 10.5 | | CONG | POLYMICTIC CONG PBL AND COBBLES OF MAFIC RK WHICH ARE ALTERED TO CHL ALSO OCC QTZ PBL MTX IS A FG GY DIRT Y GTE WITH RARE SPKS PD THIS RK IS A TRANSITION PHASE FROM FW RK TO THE OVERLYING CLEAN QTE 50-70 CPS | 45 |
| 0272.0 | 2.0 | | CONG | AS AT 270.0 60-80 CPS INCREASE BIOT IN MTX | 40 |
| 0274.0 | 2.0 | | CONG | AS AT 270.0 80-100 CPS VERY BIOT RIC H ALSO 1 PCNT DISS PD | 45 |
| 0275.0 | 1.0 | | CONG | AS AT 270.0 50-60 MTX BIOT AND QTZ | 45 |
| 0285.0 | 10.0 | | CONG | AS AT 270.0 QTZ-BIOT AND NMRS GAR IN MTX FOOT OF HOLE | 45 |



Location Sketch
 Borehole : 54029
 Collared on Cl. S-354576
 HYMAN Township (R. 945)
 SUDBURY Mining Division
 Scale : 1 inch : 400 ft.

BOREHOLE# 54040-0 PROPERTY AGNEW LAKE NTS# 4115 SH# ANOM# DEPTH 00490 AZIMUTH 335 00 GRID B. 36000 DIP -45 00 ELEV 1010 LATITUDE S001500 DEPARTURE E000400
 CM#0..... DATE.....

INCLINATION AND TROPARI TESTS

DEPTH AZIMUTH DIP DEPTH AZIMUTH DIP DEPTH AZIMUTH DIP DEPTH AZIMUTH DIP
 0100 -38 00 0200 -33 00 0300 -30 00 0400 -29 00
 0490 -25 30

COMMENTS

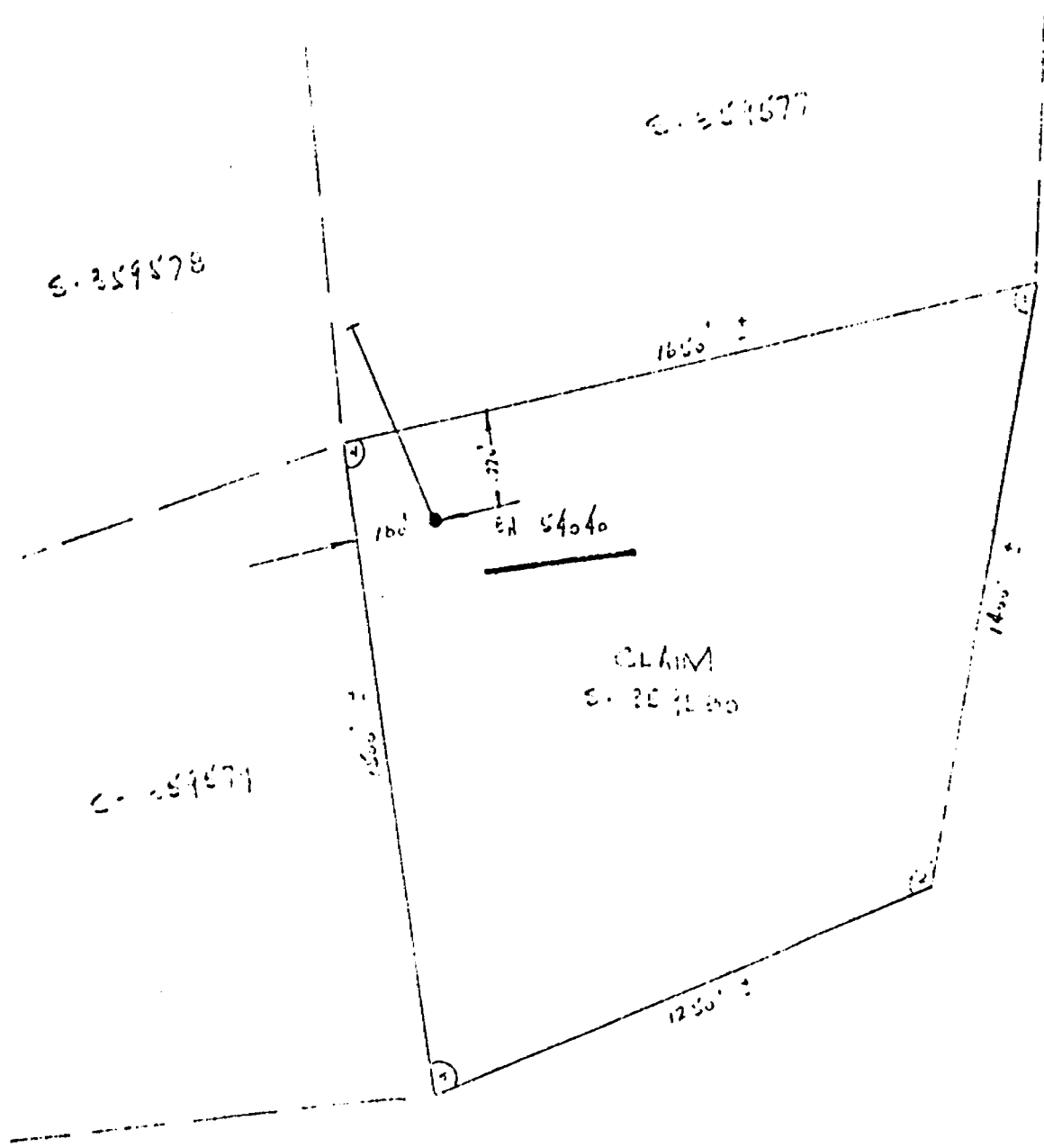
LOGGED BY..W.D.MANSON STARTED..MAR 25,1976 COMPLETED..MAR 28,1976
 DRILLED AX BY CANICO L-24 GAS CN CLAIM S-359580 LOT 12 CON I OF
 HYMAN TWP ALL CSG REMOVED

SAMPLE ENTRIES

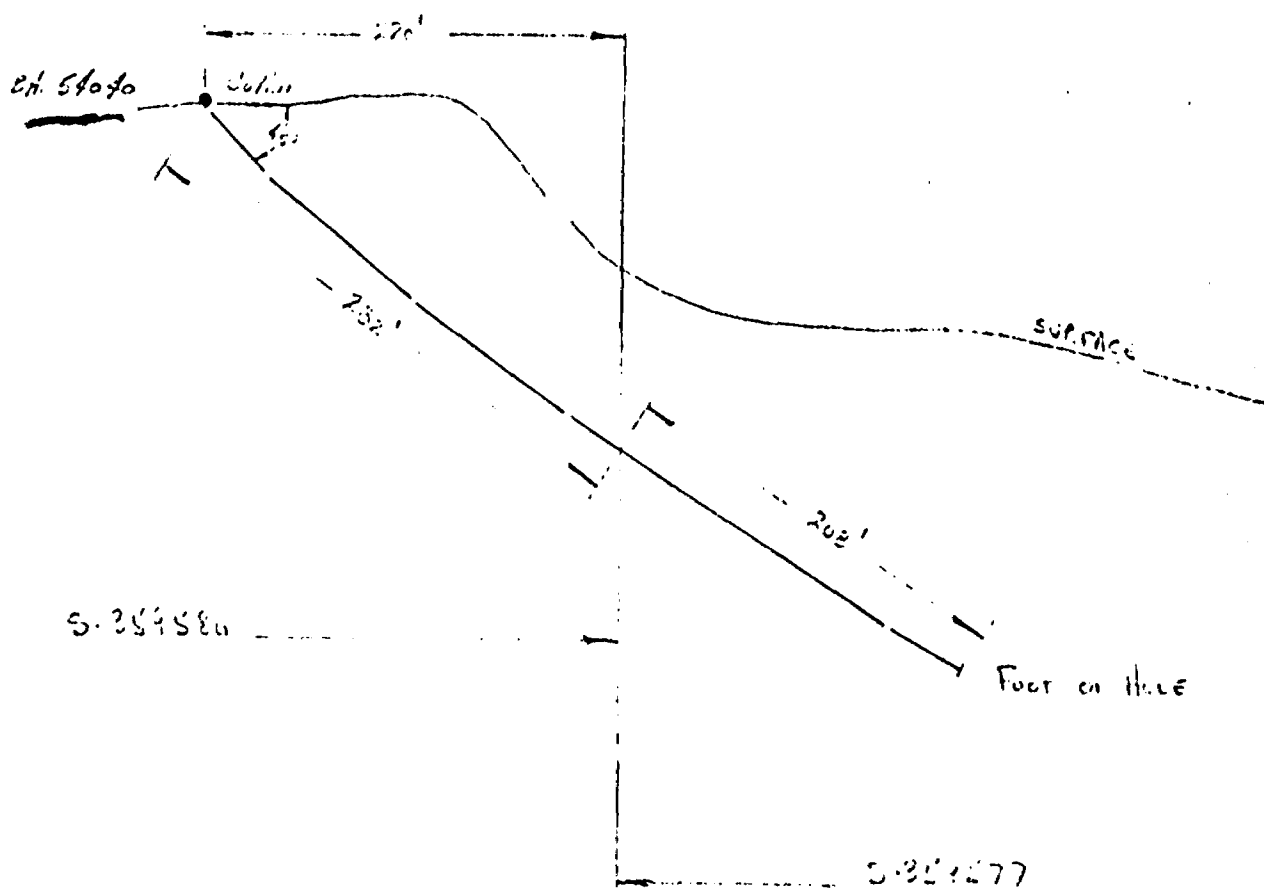
| DEPTH | LENGTH | MNZN | ROCK | DESCRIPTION | ANG |
|--------|--------|------|------|---|-----|
| 0000.0 | 0.0 | | | COLLAR | |
| 0004.0 | 4.0 | | | AW CSG THROUGH DB AND BEDROCK TO 8 FT SOC 4 FT | |
| 0014.2 | 10.2 | QTE | | FG-MG LT GY TO SLLY YELLOW GRITTY WI TH QTZ GRS 1-3MM ARE 70 PCNT OF RK IN VFG QTZ-SRCT AND MINOR FSP MIX HLY SHRD WITH SRCT FOTN PLL TO SHRG VAGUE TO DOUDTFUL BDG GEN THICK BEDE D TO MASS QTZ GRS WELL ROUNDED 35-50 50 CPS | 45 |
| 0023.8 | 9.6 | QTE | | FG LT GY TO SLLY YELLOWISH CLEAR TO WKLY FSPC QTE VERY WELL SORTE MASS BDG STGLY SHRD WITH ABNT SRCT ALONG SHRG UCT AND LCT GRDL OVE 5 CM 35-50 | 55 |
| 0025.5 | 1.7 | QTE | | AS ABOVE AT 14.2 35-50 CPS | 55 |
| 0028.7 | 3.2 | QTE | | AS ABOVE AT 23.8 35-45 CPS | 50 |
| 0038.1 | 9.4 | QTE | | AS ABOVE AT 14.2 35-45 CPS OCC VAGU | 55 |
| 0049.4 | 11.3 | QTE | | E PSL 3-4 MM FG-MG GY WITH DK GLASSY QTZ GRS 1-2 MM QUITE GRITTY HLY SHRD AND ABNT SRCT ALONG SHRG MINOR BIOT AS DISS GRS 1-2 PCNT 35-45 CPS | 60 |
| 0055.0 | 5.6 | QTE | | FG-VFG GY MASS BDED STGLY SHRD WITH ABNT SRCT ALONG SHRG VERY MINOR DISS BIOT AND OCC SLLY GRITTY DUE TO RARE QTZ GR 1-2 MM 35-45 CPS | 55 |
| 0057.5 | 2.5 | QTE | | AS ABOVE AT 55.0 35-60 CPS | 55 |
| 0058.5 | 1.0 | QTE | | VFG LTGY WITH STKS BRICK RED HEM ALO NG VERY INTENSE SHRG POSS AFTER PY ABNT SRCT ALONG SHRG POSS A NARROW SHRD ZONE WITH ENOUGH MOVEMENT TO HA VE CRUSHED THE GRS AND DEVELOP ABNT SRCT RK NOW SHOWS PRONOUNCED SCSY 40-60 CPS | 55 |
| 0060.0 | 1.5 | QTE | | FG-MG GY-LT GY WKLY BDED WELL FOTO AND AGLC WITH STKS AND DISS BIOT 5-10 PCNT LCLY GRITTY OCC STK HEM STAI N ALONG SHR PLANES STGLY SHRD WITH | 55 |

| DEPTH | LENGTH | MNZN | ROCK | DESCRIPTION | ANG |
|--------|--------|------|------|--|-----|
| 0103.7 | 43.7 | QTE | | ABNT SRCT ALONG SHRG 40-50 CPS A VE RY DIRTY QTE LCLY COULD BE A GWKE | 60 |
| | | | | DIRTY AGLC QTE AS AT 60.0 35-45 CPS RARE VAGUE QTZ PBL AND OCC GRITTY | 70 |
| 0138.9 | 35.2 | QTE | | BED 1-2 FT VAGUE TO OCUYFUL GRDL BDG CTS PLL TO SHRG | 65 |
| | | | | FG-MG GY GRITTY WITH ABNT GRS WELL ROUNDED QTZ 2-3MM IN HLY SHRD SRCT | 70 |
| 0144.2 | 5.3 | QTE | | RICH MTX VAGUELY BEDED TO MASS GRDL CTS 35-45 CPS | 70 |
| | | | | FG-MG VERY GRITTY AND VERY CLEAN POS S SLLY FSPC GRIT IS QTZ GRS 1-3MM OF | |
| | | | | WHITE VEIN QTZ IN YELLOWIS SRCT QTZ VFG MTX GEN HLY SHRD WITH ABNT SRCT | |
| | | | | PLL TO FOTN THIS UNIT MAY BE ASSINGL E BED WITH CTS GRDL OVE 10 CM 35-45 | |
| 0174.6 | 30.4 | QTE | | CPS FG-MG GY-LTGY HLY SHRD WITH SRCT ALO | 65 |
| | | | | NG SHRG GEN GRITTY DUE TO ABNT QTZ GRS 1-3 MM OF DK GLASSY QTZ THESE | |
| | | | | QTZ GRS GENERALLY WELL ROUNDED VERY MINOR DISS BIOT WKLY FSPC 35-45 CPS | 75 |
| 0177.3 | 2.7 | ARK | | MG LT GY GRITTY ARK QTZ-FSP ARE 60-4 0 PCNT AND SHRD WITH ABNT SRCT ALONG | 75 |
| | | | | SHRG MINOR QTZ VEINS TO 2CM CTS ARE GRDL 35-45 CPS | |
| 0183.2 | 5.9 | QTE | | AS AT 174.6 35-45 CPS | 75 |
| 0188.2 | 5.0 | QTE | | AS AT 174.6 40-50 CPS | 80 |
| 0188.8 | 0.6 | QTE | | AS AT 174.6 RARE QTZ PBL 3-6MM 50-75 CPS | 75 |
| 0188.9 | 0.1 | CONG | | QPC WHITE QTZ PBL 4MMX15MM IN FG SRCTC MTX RDCV 100-115 CPS | 75 |
| 0189.5 | 0.6 | QTE | | AS AT 174.6 50-75 CPS | 75 |
| 0194.5 | 5.0 | QTE | | AS AT 174.6 35-45 CPS | 75 |
| 0218.0 | 23.5 | QTE | | FG-MG SLLY GRITTY LT GY T3 SLLY YELL OW MASS BOED MDT SHRG WITH ABNT SRC | 75 |
| | | | | T PLL TO SHRG LCLY GRDL TO VFG 35-45 GPS | 80 |
| 0231.9 | 13.9 | QTE | | AS AT 218.0 SLLY FINER GRND 35-45 CPS | 80 |
| 0243.7 | 11.8 | QTE | | FG-MG LT GY-GY GRITTY WITH GRIT FRMS OF WHITE MILKY QTZ AND OCC FSP GKN | 85 |
| | | | | VAGUE BNGG DUE TO SLIGHT VARIATIONS OF A MINOR BIOT CONTENT 35-40 CPS | |
| 0274.6 | 30.9 | QTE | | FG GY WKLY SHRD LCLY VFG TO SILTY SRCT ALONG SHRG GEN A VERY CLEAN WEL | 85 |
| | | | | L SORTED QTE 35-45 CPS | |
| 0280.0 | 5.4 | QTE | | AS ABOVE AT 218.0 35-45 CPS | 85 |
| 0282.0 | 2.0 | QTE | | AS ABOVE AT 218.0 35-50 CPS | 85 |
| 0284.3 | 2.3 | QTE | | AS AT 218.0 VERY GRITTY HLY SHRD 50- 60 CPS RDCV IN BH | 85 |
| 0287.0 | 2.7 | QTE | | AS AT 218.0 30-50 CPS | 85 |
| 0289.8 | 2.8 | QTE | | AS AT 214.6 | |
| 0330.0 | 40.2 | QTE | | FG-MG FAIRLY CLEAN GRITTY AND LCLY YELLOW DUE TO ABNT SRCT VAGUELY BNDE | 85 |

| DEPTH | LENGTH | MNZM | ROCK | DESCRIPTION | ANG |
|--------|--------|------|---|-------------|-----|
| 0340.2 | 10.2 | QTE | D 30-40 CPS FG-MG LY GY VERY GRITTY ROUNDED QTZ GRS UP TO 3MM WKLY FSPC WITH MINOR DISS BIOT MODERATELY SHRD WITH SRCT ALONG SHRGS 35-45 CPS LCLY GRDL OVER 10 CM | 80 | |
| 0342.1 | 1.9 | SLST | VFG FISSILE HLY SHRD AND ABNT SRCT ARD LCLY SILTY AGLC OCC THIN BED TO 1CM OF CLEAN QTE 35-45 CPS | 80 | |
| 0346.3 | 4.2 | SLST | AS ABOVE AT 342.1 45-85 CPS | 85 | |
| 0349.0 | 2.7 | SLST | AS ABOVE AT 342.1 40-50 CPS | 85 | |
| 0352.5 | 3.5 | SLST | AS ABOVE AT 342.1 AGLC 40-50 CPS RAR E SPK PY ON SHR PLANES | 80 | |
| 0354.5 | 2.0 | SLST | AS ABOVE AT 342.1 AGLC 40-50 CPS | 80 | |
| 0357.5 | 3.0 | SLST | AS ABOVE AT 342.1 AGLC 30-45 CPS | 80 | |
| 0361.7 | 4.2 | SLST | AS ABOVE AT 342.1 30-40 CPS LCT IS GRDL TO SILTY QTE | 85 | |
| 0368.2 | 6.5 | QTE | FG GY LCLY BANDS ARE SILTY BUT GEN A WKLY GRITTY QTE WITH MINOR DISS BI OT AND MASS TEXT 35-45 CPS | 80 | |
| 0414.3 | 46.1 | QTE | FG-MG LT GY LCLY GRITTY MODERATELY SHRD WITH SRCT ALONG SHRGS WKLY FSPC AND MINOR DISS BIOT RARE SHEAR PY ALONG SHR PLANES 30-40 CPS | 85 | |
| 0418.3 | 4.0 | QTE | AS ABOVE AT 368.2 35-50 CPS | 85 | |
| 0426.2 | 7.9 | QTE | AS ABOVE AT 414.3 35-50 CPS | 85 | |
| 0427.8 | 1.6 | QTE | FG LT GY VERY CLEAN QTE WKLY SHRD WITH MINOR SRCT ALONG SHRGS 35-45 CPS | 85 | |
| 0431.1 | 3.3 | QTE | AS ABOVE AT 414.3 35-45 CPS | 85 | |
| 0433.1 | 2.0 | QTE | AS ABOVE AT 427.8 35-45 CPS | 85 | |
| 0434.5 | 1.4 | QTE | AS ABOVE AT 414.3 35-45 CPS | 85 | |
| 0437.0 | 2.5 | QTE | FG GY WKLY GRITTY WK BNOG ABNT SRCT 50-70 CPS | 85 | |
| 0439.0 | 2.0 | QTE | AS ABOVE AT 414.3 40-50 CPS | 85 | |
| 0441.3 | 2.3 | QTE | AS ABOVE AT 414.3 40-60 CPS | 85 | |
| 0443.4 | 2.1 | CONG | QPC QTZ PBLs 1-2CM WELL ROUNDED AND STRETCHED PLL TO FOIN PBLs ARE IN A QTE-SRCTC MTX AND FOP4 LESS THAN 10 PCNT OF THE RK 80-220 CPS | 85 | |
| 0445.7 | 2.3 | QTE | AS ABOVE AT 414.3 40-50 CPS | 85 | |
| 0449.0 | 3.3 | QTE | AS ABOVE AT 414.3 35-50 CPS | 85 | |
| 0453.0 | 4.0 | QTE | AS ABOVE AT 414.3 35-70 CPS | 85 | |
| 0457.0 | 4.0 | QTE | AS ABOVE AT 414.3 40-60 CPS | 85 | |
| 0459.6 | 2.6 | QTE | AS ABOVE AT 414.3 40-50 CPS | 85 | |
| 0462.5 | 2.9 | CONG | QPC OCC QTZ PBLs TO 3-4 CM IN FG GY SRCTC AND WKLY GRITTY QTE MTX PBLs ARE LESS THAN 5 PCNT OF THE RK 55-10 5 CPS | 85 | |
| 0465.0 | 2.5 | QTE | AS ABOVE AT 414.3 35-50 CPS | 85 | |
| 0467.8 | 2.5 | QTE | AS ABOVE AT 414.3 35-50 CPS | 85 | |
| 0469.5 | 1.7 | QTE | FG GY WELL BNOG WITH BIOT RARE QTZ PBL 3-4MM LCLY VERY AGLC RARE STK PY AND OCC GAR IMM TRANSITION ZONE TO FW RKS IE QTE WITH UP TO 60 PCNT OF FW MATERIAL PROB REWORKED INTO THE QTE | 85 | |



Location Sketch
 Borehole = 5404
 Collar on St. S. 359580
 Hyman Township (Ill. 945)
 Subdiv. Illinois Division
 Scale: 1 inch = 400 ft.



SECTION PLAN
 BOREHOLE : 540.0
 HORIZ. TOWNSHIP (11.942)
 SURFACE : 11.1
 Scale : 1 inch = 100 ft.

BOREHOLE RECORD #27 - Sudbury

DATE PROCESSED MAY 06, 1976

BOREHOLE# 54041-0 PROPERTY AGNEW LAKE NTS# 4115 SM# ANOM# DEPTH 00432 AZIMUTH 335 00 GRID B. 36000 DIP -45 00 ELEV 0915 LATITUDE S001525 DEPARTURE W000400 CMK'D..... DATE.....

INCLINATION AND TROPARI TESTS
DEPTH AZIMUTH DIP DEPTH AZIMUTH DIP DEPTH AZIMUTH DIP DEPTH AZIMUTH DIP
0100 -42 30 0200 -39 00 0300 -37 30 0400 -35 00

COMMENTS
LOGGED BY..R L HORST STARTED..MAR 29, 1976 COMPLETED..APR 01, 1976
DRILLED AX BY CANICO L-24 GAS ON CLAIM S-359579 LOT 12 CON I
HYMAN TWP

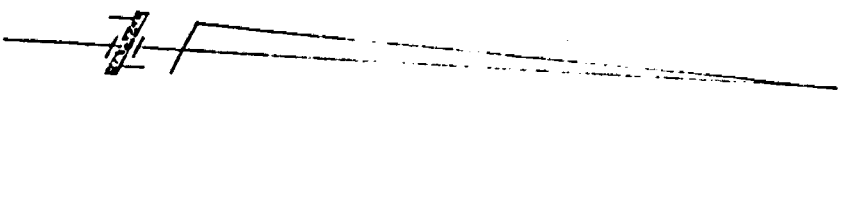
| SAMPLE ENTRIES | | | | | | |
|----------------|--------|------|------|--|-----|--|
| DEPTH | LENGTH | MNZN | ROCK | DESCRIPTION | ANG | |
| 0005.0 | 0.0 | | | COLLAR | | |
| 0008.3 | 8.3 | | | OVERBURDEN CSNG TO 11 FT | | |
| 0013.7 | 5.4 | QTE | | MG SRCTZD SCHSTD 1-3 MM QTZ FLOSPR & 60 RF GRNS ARGCLS & SBMTR MDRT SRNG & RNDNG 30-40 CPS | | |
| 0014.7 | 1.0 | QTE | | MG SRCTZD SCHSTD AS PRUS MNDR 1 CM QTZ VEINS SLLY RDCV 40-60 CPS | 60 | |
| 0024.1 | 9.4 | QTE | | MG ARGCLS SRCTZD SCHSTD AS 13.7 FT MNDR 1 CM QTZ VEINS 35-45 CPS | 60 | |
| 0024.4 | 0.3 | QTZ | | VEIN PRL TO SCHSTSTY & BDDNG MSSV & 60 PURE NO RDCV 45 CPS | | |
| 0038.4 | 14.0 | QTE | | MG SRCTZD SCHSTD AS 24.1 FT 35-45 CPS | 65 | |
| 0038.7 | 0.3 | MVVM | QTZ | VEIN PRL TO SCHSTSTY MSSV WITH 19 PY AS VEIN IN QTZ 45 CPS | 65 | |
| 0040.8 | 2.1 | QTE | | AS 38.4 FT 30-40 CPS | 65 | |
| 0042.1 | 1.3 | QTE | | FG MORE SLCS & PURER SRCTZD & SCHSTD MORE MTR 35-45 CPS | 65 | |
| 0052.9 | 10.8 | QTE | | MG ARGLS SRCTZD SCHSTD AS 38.4 FT 35 -45 CPS | 65 | |
| 0053.5 | 0.6 | QTZ | | TWO 3 CM QTZ VEINS IN MG ARGLS QTE PURE WHITE PRL SCHSTSTY & BDDNG 35- 45 CPS | 70 | |
| 0060.3 | 6.8 | QTE | | MG ARGLS SBMTR SRCTZD SCHSTD AS PRUS 1-3 MM QTE FLOSPR SRCY RF GRNS 35-45 CPS | 70 | |
| 0083.6 | 23.3 | QTE | | FG TO MG LT GY ARGLS BUT PURER THAN PRUS MNDR 1 CM QTE VNS SRCTZD & SCHSTD AS PRUS 35-45 CPS | 70 | |
| 0106.6 | 23.0 | QTE | | MG LT GY ARGLS SRTO SBMTR SRCTZD & SCHSTD MRE MTR THAN PRUS MRE FLOSPR & LSS ARGLS CNTNT 35-55 CPS | 70 | |
| 0123.3 | 16.7 | QTE | | FG LT GY MRE SCHSTD & SRCTZD 20-25% SRCT, 50-65% QTZ, 10-30% FLOSPR 35-45 CPS | 70 | |
| 0125.0 | 1.7 | LC | | LOST CORE | | |
| 0128.2 | 3.2 | QTE | | FG LT GY VRY SRCTZD YLCS & SOFT BC SLST SIZE GRNS 35-45 CPS | 75 | |
| 0130.0 | 1.8 | QTE | | MG DK GY TO LT GY SRCTZD & SCHSTD AS | 75 | |

| DEPTH | LENGTH | MNZN | ROCK | DESCRIPTION | ANG |
|--------|--------|------|------|---|-----|
| | | | | 60.3 FT BUT WITH ABNDNT 1 CM QTZ VNS PRL SCHSTSTY & BDDNG MCR-FLTNG DN | |
| 0135.0 | 5.0 | QTE | | FG TO MG MRE SLCS & PURER THAN PRVS SRCTZD & SCHSTD 35-45 CPS | 75 |
| 0136.5 | 1.5 | LC | | LOST CORE | |
| 0138.0 | 1.5 | QTE | | AS 135.0 FT 35-45 CPS | 75 |
| 0145.0 | 7.0 | QTE | | MG DK GY SBMTR ARGLS SRCTZD SCHSTD AS 130.0 FT MNCR BNDNG WITH ARGLS & BIOTITE BNDG 1-3 CM QTZ VEINS PRL TO SCHSTSTY & BDDNG 35-50 CPS | 75 |
| 0146.2 | 1.2 | QTE | | AS 145.0 FT BUT SLLY RDCV 50-85 CPS | 75 |
| 0154.4 | 8.2 | QTE | | BND QTZ-RICH & ARGLS-BIOTITE-RICH BNDG SRCTZD & SCHSTD SMLR TO 145.0 FT 35-40 CPS | 75 |
| 0155.0 | 0.6 | MVW | CGL | QTZ PBBL CGL SCHSTD SRCTZD 1-2 CM WIDTH STRCHD PBBL IN ARGLS-BIOTITE RICH QTE MTRX 1% DSSMNTD PY SLLY RDCV 60-85 CPS | 75 |
| 0156.2 | 1.2 | MVW | CGL | QTZ PBBL AS PRVS BUT MORT RDCV & MRE PBBL SCHSTD SRCTZD & QTZ VND 1% DSSMNTD PY 100-160 CPS | 75 |
| 0163.7 | 7.5 | QTE | | DK GY MG SRD SBMTR SBMTRD SRCTZD & SCHSTD AS 145.0 FT 35-45 CPS | 75 |
| 0173.1 | 9.4 | QTE | | MG DK-LT GY WITH ABNDNT QTZ FLNG & K-SPR VNS FRNG 50% OF UNIT SRCTD & SCHSTD & SRCTZD NO RDCV 35-45 CPS | 75 |
| 0178.1 | 5.0 | QTE | | MG TO CG AS 173.1 FT BUT LESS QZ & K-SPR FLNG 25% SRCTZD & CHRTZ SLLY RDCV 45-60 CPS | 75 |
| 0182.8 | 4.7 | QTE | | MG DK GY ARGLS WITH ONLY MNCR QTZ & K-SPR VNS SRD & SBMTR 45-60 CPS | 75 |
| 0183.4 | 0.6 | QTZ | | PURE WHITE QTZ VEIN SBPRL TO SCHST & BDDNG MNCR BIOTITE 45 CPS | 70 |
| 0189.0 | 5.6 | QTE | | AS 182.8 FT 45-60 CPS | 70 |
| 0190.8 | 1.8 | MVW | CGL | QTZ PBBL SCHSTD & SRCTZD ARGLS WITH BIOTITE RICH LYRS 1-2 CM WIDTH QTZ STRCHD PBBL ON SCHSTSTY 1% DSSMNT PY 80-215 CPS MORT RDCV | 70 |
| 0193.3 | 2.5 | QTE | | MG DK GY ARGLS AS 189.0 FT SRCTZD & SCHSTD 35-60 CPS | 70 |
| 0194.3 | 1.0 | CGL | | QTE PBBL STRCHD 1 CM WIDTH SRCTZD SCHSTD & ARGLS MNCR RDCV 55-90 CPS | 70 |
| 0200.0 | 5.7 | QTE | | MG DK GY ARGLS SRD SBMTR SRCTZD & SCHSTD AS 193.3 FT 30-50 CPS | 70 |
| 0210.0 | 10.0 | QTE | | LT GY MG MTR ALL SRD RND QTZ RF & FLDSPR GRNS SRCTZD & SCHSTD 30-55 CPS | 70 |
| 0220.7 | 10.7 | QTE | | LT GY MG AS 210.0 FT BUT MRE SLCS & LSS ARGLS 5% QTZ MNCR SRCTZTN & SCHSTSTY 30-40 CPS | 75 |
| 0221.3 | 0.6 | LC | | LOST CORE | |
| 0223.8 | 2.5 | QTE | | AS 220.7 FT 30-40 CPS | 75 |
| 0224.5 | 0.7 | LC | | LOST CORE | |
| 0227.5 | 3.0 | QTE | | MG LT GY-DK GY SRD SCHSTD SRD & | 75 |

| DEPTH | LENGTH | MNZN | ROCK | DESCRIPTION | ANG |
|--------|--------|------|------|---|-----|
| 0228.7 | 1.2 | LC | | SBMTR AS PRVS 30-40 CPS LOST CORE | |
| 0236.0 | 7.3 | QTE | | AS 227.5 FT 35-45 CPS | 80 |
| 0236.4 | 0.4 | LC | | LOST CORE | |
| 0250.0 | 13.6 | QTE | | MG TO CG LT GY WLL-SRTD MTR META- SNDS SRTZD & SCHSTD AS 236.0 FT BUT SLLY MORE CG 35-50 CPS | 80 |
| 0271.0 | 21.0 | QTE | | MG LT GY SRTZD SCHSTD AS 250.0 FT BUT LESS CG 35-45 CPS | 75 |
| 0272.1 | 1.1 | QTE | | MG LT GY WITH ABNDNT QTZ VEINS & K-SPR FLONG MITD TXTR 40-50 CPS | 75 |
| 0285.4 | 13.3 | QTE | | MG LT GY MTR RNDQ QTZ, FLDSPP, RF GRNS 1-3 MM SCHSTD & SRTZD META-SNDS AS PRVS 40-50 CPS | 75 |
| 0287.1 | 1.7 | QTE | | AS 285.4 FT BUT WITH ABNDNT K-SPR & QTZ 1 CM VNS & ALTRTN SBRLL TO BDNG 40-50 CPS | 80 |
| 0305.0 | 17.9 | QTE | | MG LT GY SRTZD & SCHSTD AS 285.4 FT 40 - 50 CPS | 80 |
| 0306.5 | 1.5 | QTE | | CG LT TO DK GY SRTZD SCHSTD WITH ABNDNT K-SPR & QTZ VEINING 35-50 CPS | 80 |
| 0320.6 | 14.1 | QTE | | MG LT GY TO DK GY SRTZD & SCHSTD SBMTR & RNDQ QTZ FLDSPP RF GRNS 1-3 MM 35-45 CPS | 80 |
| 0323.2 | 2.6 | QTE | | FG TO MG MORE SLCS PURE & MTR WLL- RNDQ QTZ GRNS 40-50 CPS LESS SRTZD 5% QTZ | 80 |
| 0345.0 | 21.8 | QTE | | MG LT GY TO DK GY SRTZD & SCHSTD AS PRVS SBMTR TO 305.0 FT 35-55 CPS | 85 |
| 0349.0 | 4.0 | QTE | | FG TO MG LT GY SLCS PURER 85% QTZ LESS SRTZD & SCHSTD 35-45 CPS | 85 |
| 0360.0 | 11.0 | QTE | | MG MTR RNDQ QTZ, FLDSPP RF 1-3 MM GRNS SRTZD & SCHSTD AS 345.0 FT 35- 55 CPS | 80 |
| 0361.2 | 1.2 | QTE | | MG TO CG WELL SRTD & MTR META-SNDS SRTZD & SCHSTD MDRT RDCV 55-150 CPS | 85 |
| 0362.4 | 1.2 | MVVW | CGL | QTZ PBLS 1 CM WIDTH STRCHD ON EDNG & SCHSTSY IN ARGLS-BIOTITE RICH MTRX 1-2% PY ON SCHSTSY PLNS STRNG RDCV 150-550 CPS | 85 |
| 0363.5 | 1.1 | MVVW | QTE | MG TO CG WELL SRTD & MTR AS 361.2 FT MDRT RDCV MVVW PY ON SCHSTSY 75-150 CPS | 85 |
| 0368.0 | 4.5 | QTE | | MG TO CG SCHSTD AS 360.0 FT 45-55 CPS | 80 |
| 0372.8 | 4.8 | QTE | | MG SRTZD SCHSTD WLL SRTD & MTR AS PRVS MNCK RDCV 50-80 CPS | 80 |
| 0375.0 | 2.2 | LC | | LOST CORE | |
| 0380.0 | 5.0 | QTE | | MG SRTZD SCHSTD WITH MNOR QTZ VFINS & BRCTN SLLY RDCV AS 372.8 FT 45-72 CPS | 85 |
| 0388.0 | 8.0 | QTE | | MG LT GY SRTD MTR AS 380.0 FT BUT NO RDCV 40-50 CPS | 85 |
| 0390.0 | 2.0 | MVVW | QTE | CG PBBL WITH RARE 1 CM QTZ PBLS SCHSTD ON SCHSTSY SRTZD AS PRVS | 85 |



LORRY L. SWANSON
 CORPORATE S4041
 COLLIER OR CL. 0.259579
 HYPERION TRACT (M-945)
 SUBDIVISION MAP NO. 100000
 SCALE: 1 inch = 400 FT.





41105NE0051 0014B1 HYMAN

900

SCHEDULE "B"

Ex d.d. hole 54028-0, located on S-359577, Angle -45°NW, 351 ft. - 351 days ✓ x
 Ext.d.d. hole 54030-0, located on S-377486, Angle -37°SE, 325 ft. - 325 days ✓ x
 Ext d.d. hole 54031-0, located on S-377486, Angle -45°NW, 670 ft. - 670 days ✓
 Ext d.d. hole 54032-0, located on S-377489, Angle -40°SE, 200 ft. - 200 days ✓
 Ex d.d. hole 54033-0, Angle -45°SE, 215 ft. drilled on S-359575, and
 435 ft. drilled on S-359576 - Total = 650 ft. - 650 days ✓ x
 Ex d.d. hole 54034-0, located on S-359577, Angle -50°NW, 141 ft. - 141 days x
 Ex d.d. hole 54035-0, located on S-359577, Angle -55°NW, 271 ft. - 271 days ✓ x
 Ax d.d. hole 54036-0, Angle -45°NW, 365 ft. drilled on S-377482 and
 83 ft. drilled on S-377483 - Total = 448 ft. - 448 days ✓
 Ax d.d. hole 54037-0, located on S-377482, Angle -45°NW, 381 ft. - 381 days ✓
 Ax d.d. hole 54038-0, located on S-359577, Angle -87°NW, 220 ft. - 220 days ✓ x
 Ax d.d. hole 54039-0, located on S-359576, Angle -45°W, 285 ft. - 285 days x
 Ax d.d. hole 54040-0, Angle -45°NW, 282 ft. drilled on S-359580, and
 208 ft. drilled on S-359577 - Total = 490 ft. - 490 days ✓
 Ax d.d. hole 54041-0, located on S-359579, Angle -45°NW, 432 ft. - 432 days ✓

Total work available = 4,865 ft. - 4,864 days
 Work recorded as per Schedule "A" 4,864 days
 Credits Remaining - Nil

Drilling dates for the above thirteen (13) boreholes

BH 54028-0 - January 28-30, 1976
 BH 54030-0 - February 5-7, 1976
 BH 54031-0 - February 10-15, 1976
 BH 54032-0 - February 18-19, 1976
 BH 54033-0 - February 22-29, 1976
 BH 54034-0 - March 3-4, 1976
 BH 54035-0 - March 4-6, 1976
 BH 54036-0 - March 8-11, 1976
 BH 54037-0 - March 13-14, 1976
 BH 54038-0 - March 17-18, 1976
 BH 54039-0 - March 21-23, 1976
 BH 54040-0 - March 25-28, 1976
 BH 54041-0 - March 29 - April 1, 1976

By: Canadian Nickel Company Limited (L-24 Drill)
 Copper Cliff, Ontario

W. V. Rodney

May 19, 1976

MAY 26

TOWNSHIP

HYMAN

DISTRICT

SUDBURY

MINING DIVISION

SUDBURY



Ministry of Natural Resources

Ontario

Surveys and Mapping Branch

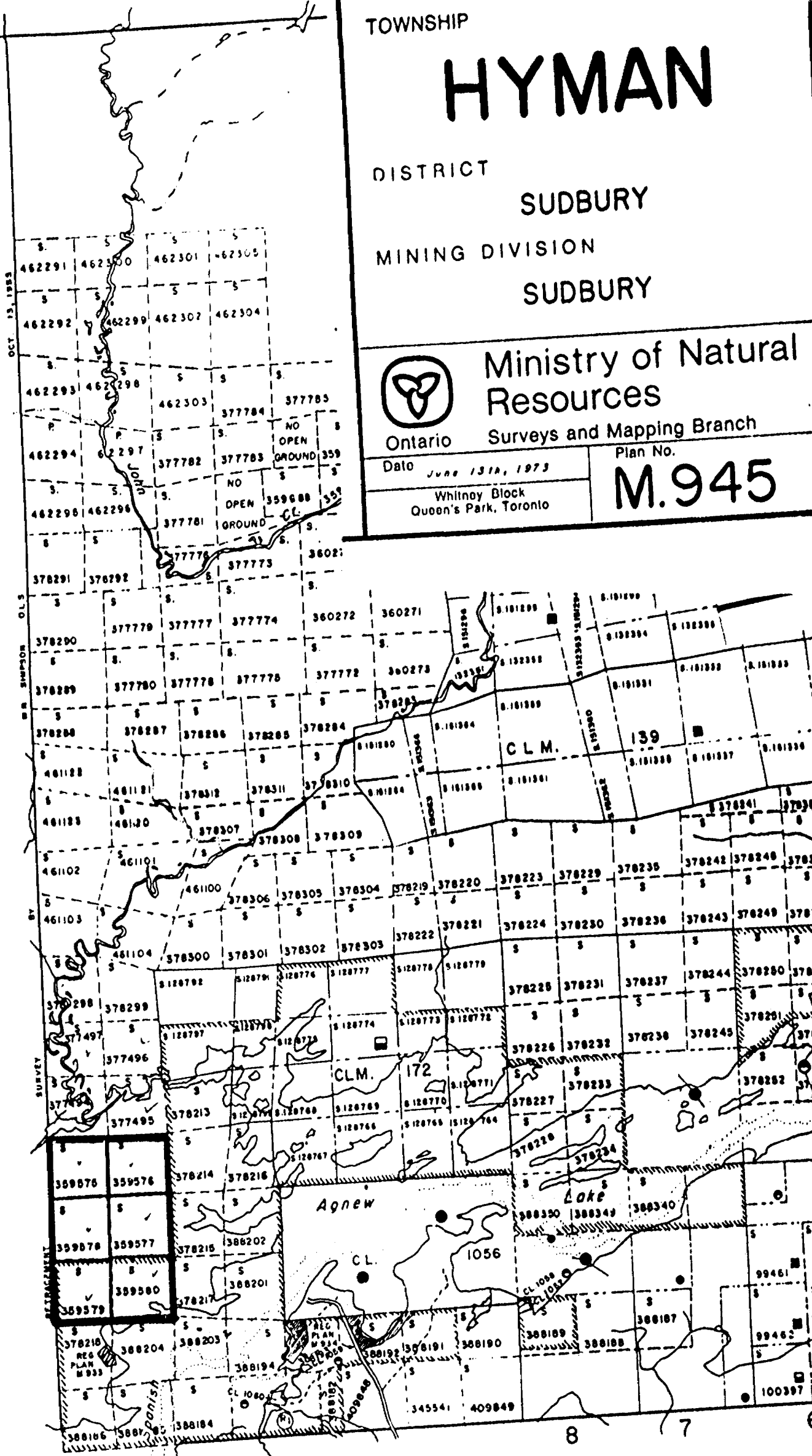
Date *June 13th, 1973*

Plan No.

Whitney Block
Queen's Park, Toronto

M.945

PORTER TP. M.1061



27-76
 HYMAN & PORTER TOWNSHIPS. SCALE 1" = 40 CH
 AMAX EXPLORATION INC. NAIRN TP. N