

DIAMOND DRILLING



411055E0024 0012E1 NAIRN

010

TOWNSHIP: NAIRN

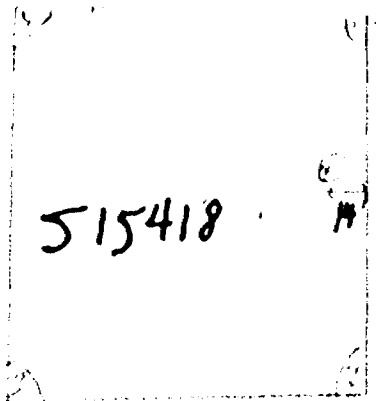
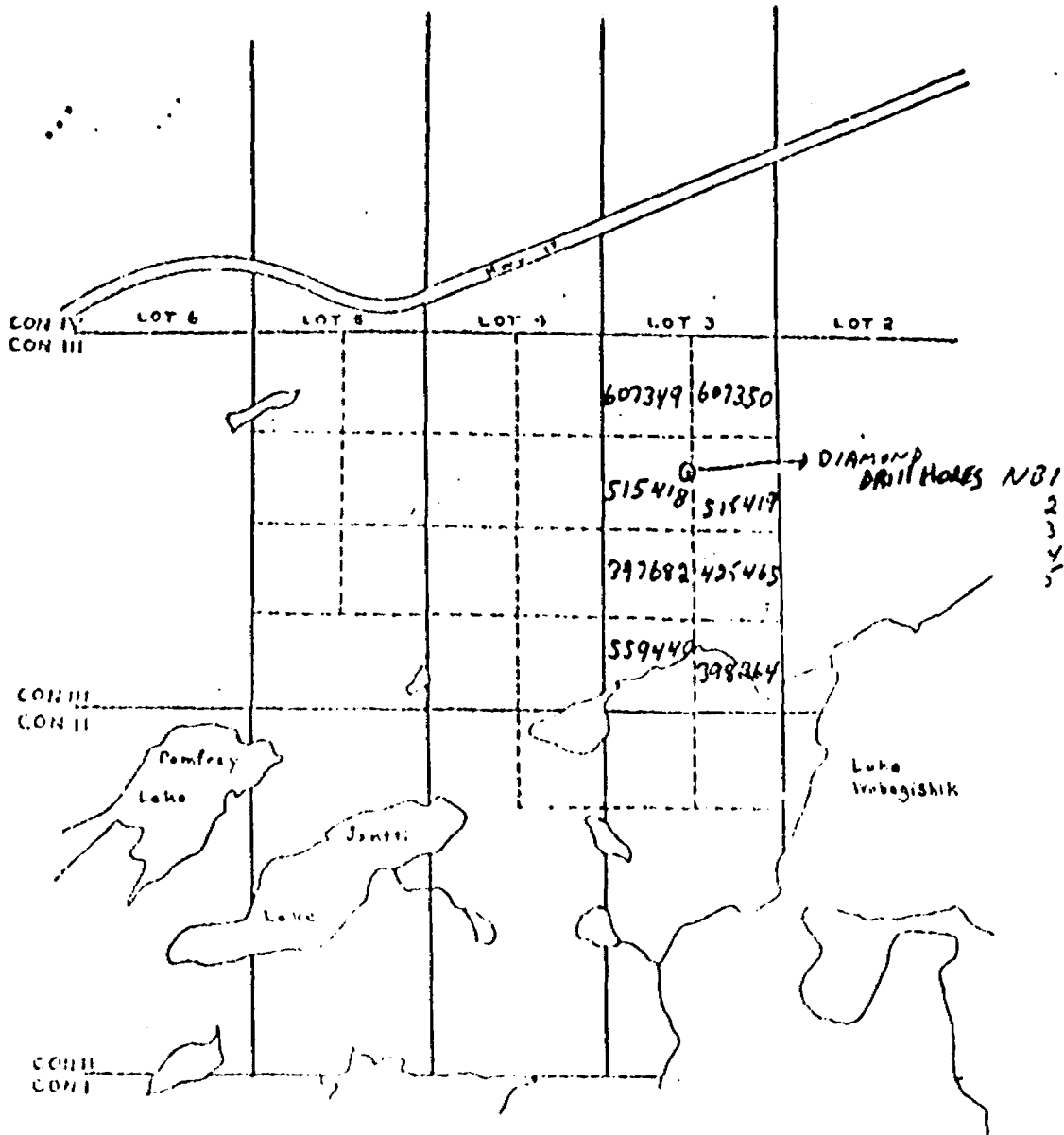
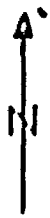
REPORT NO.: 22

WORK PERFORMED BY: Wm. Alanen

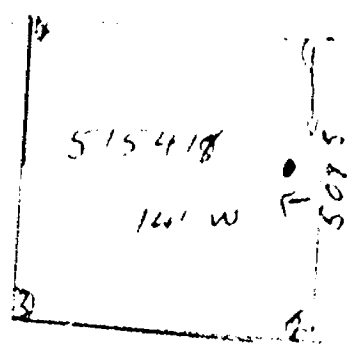
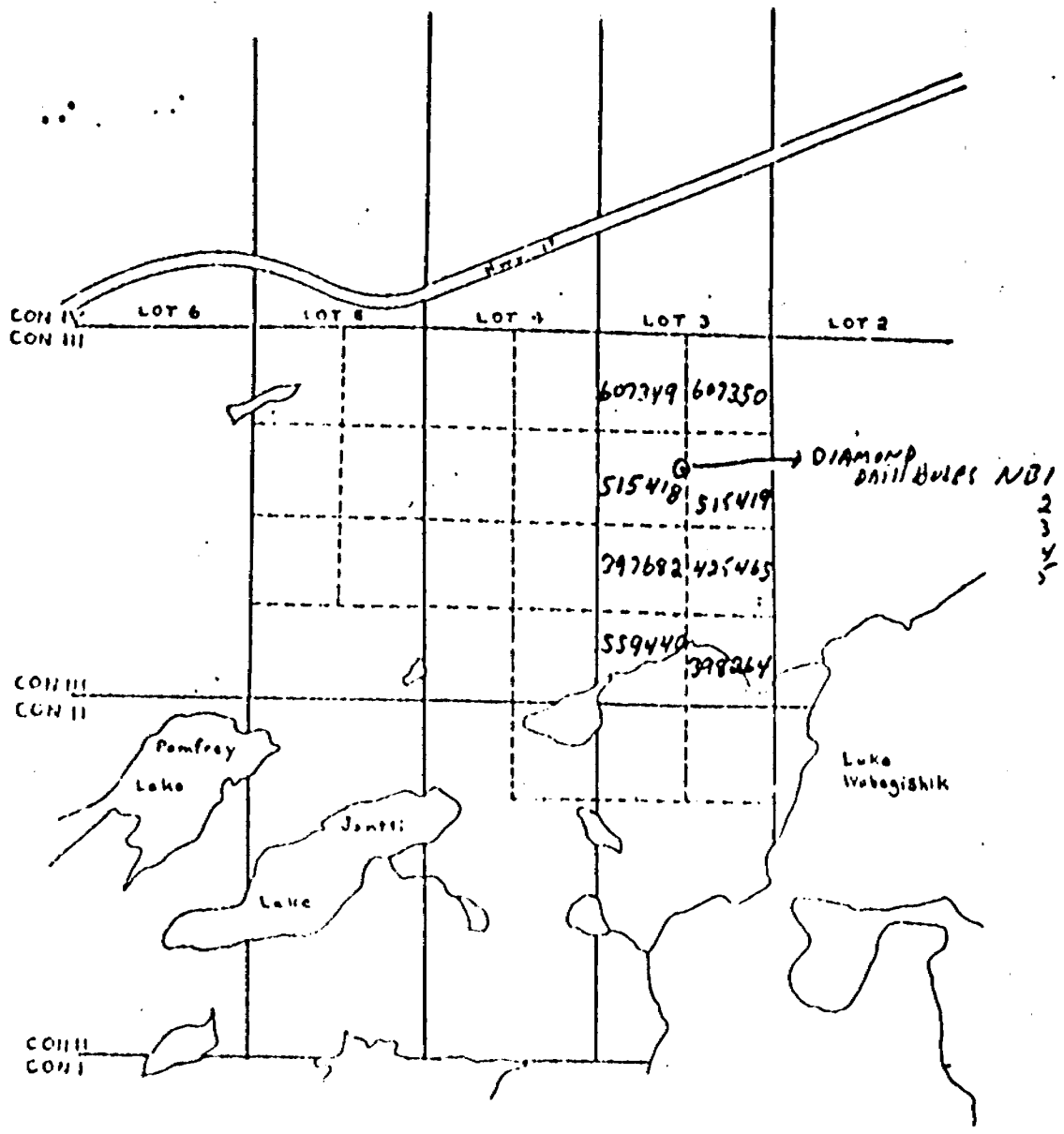
<u>CLAIM No.</u>	<u>HOLE No.</u>	<u>FOOTAGE</u>	<u>DATE</u>	<u>NOTE</u>
S 515418	NB - 1	110.0	June/81	(1)
	NB - 2	32.0	June/81	(1)
	NB - 3	28.0	June/81	(1)
	NB - 4	28.0	June/81	(1)
	NB - 5	26.0	June/81	(1)

TOTAL: S DH 224FT

NOTES: (1) #79-81



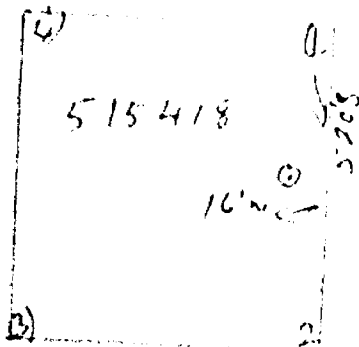
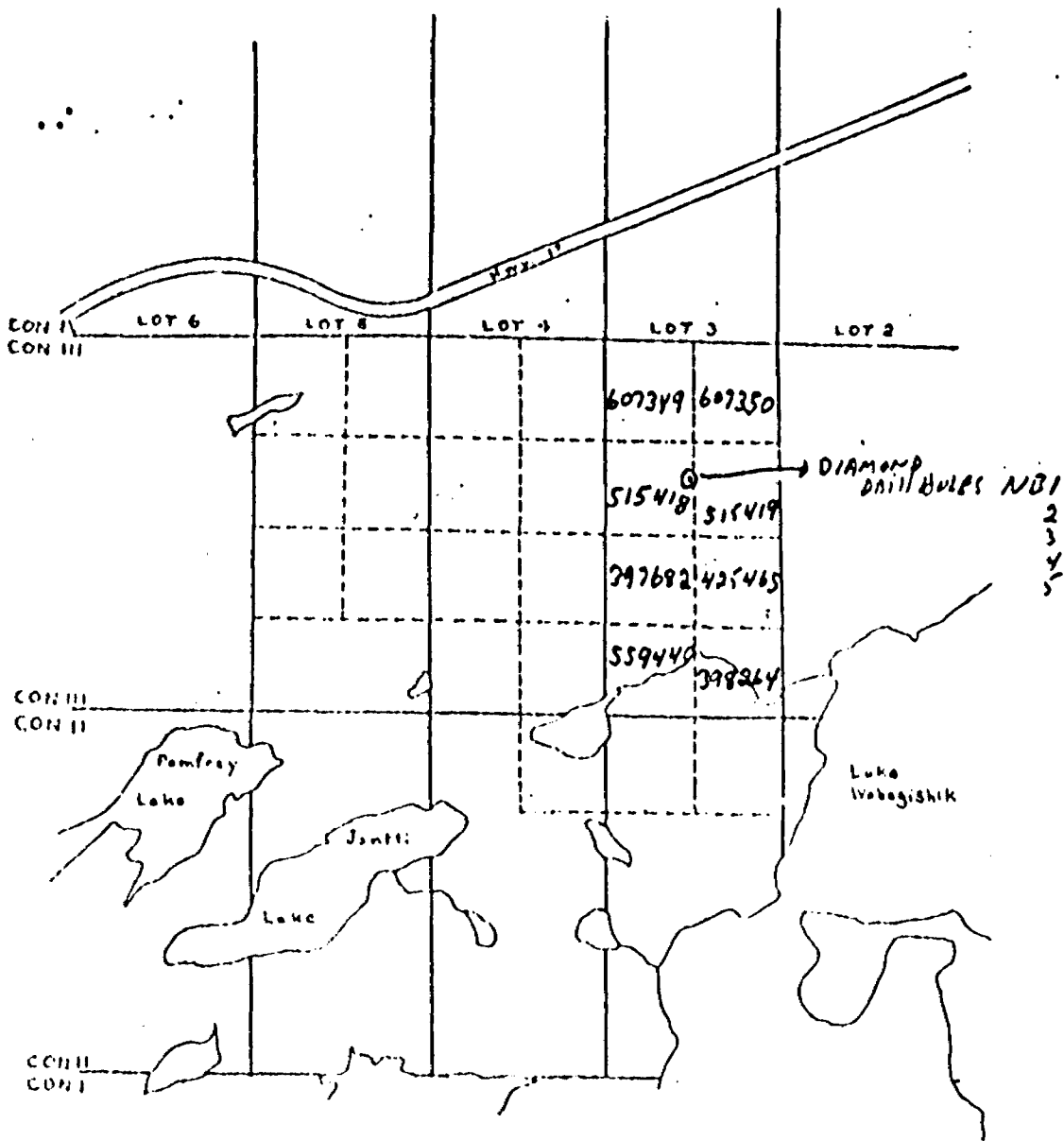
DI hole #1
 519' from 1st post
 South #1 post
 100' WEST CLAIM LINE
 14' WEST CLAIM LINE



D D Hole 2

508 S from #1 post

141 W from CLM LINE



DD HOLE # 3
520' SOUTH # 1 POST
16' W CLAIM LINE

SURFACE DIAMOND DRILL CORE RECORD

DATE DRILLED: JUNE 15-27 1981

LOCATION - NORTH 7TH APPROX 509'S 19'W FROM N.E. CORNER

SW 1/4 N 1/2 LOT 3 CON 3

CLAIM # 515418

LOC # NB4

DRILLER: D. BASFALL

DIP: N.E. 45°

45°

HOLE SIZE

XRP

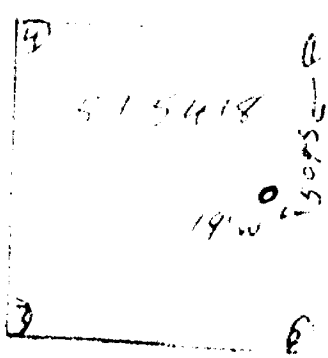
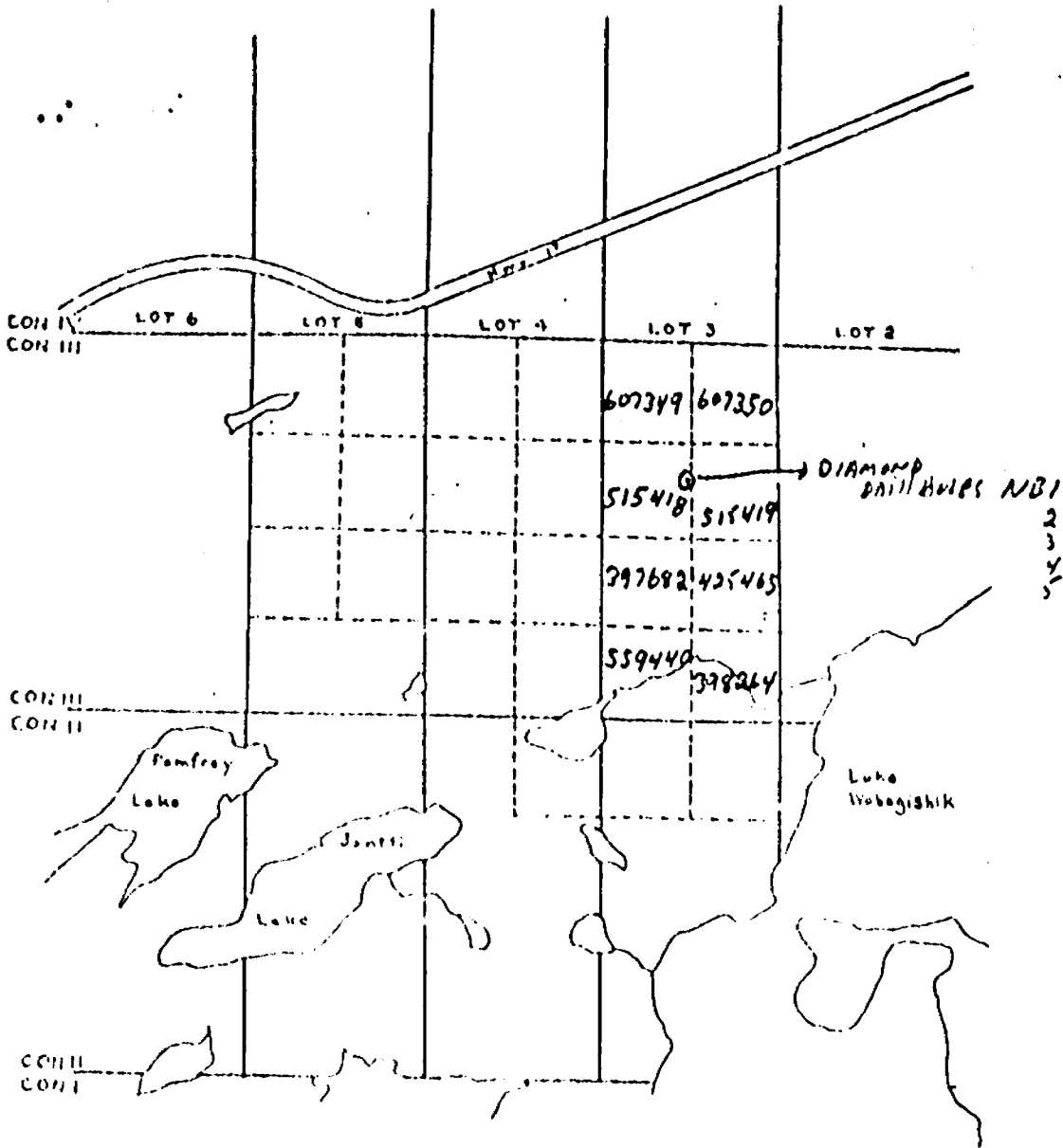
REMARKS

SELF - BASFALL & CBIS

CORE ANALYSIS

CORE IDENT

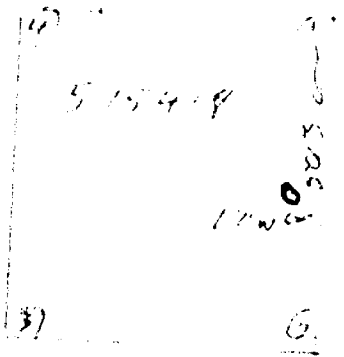
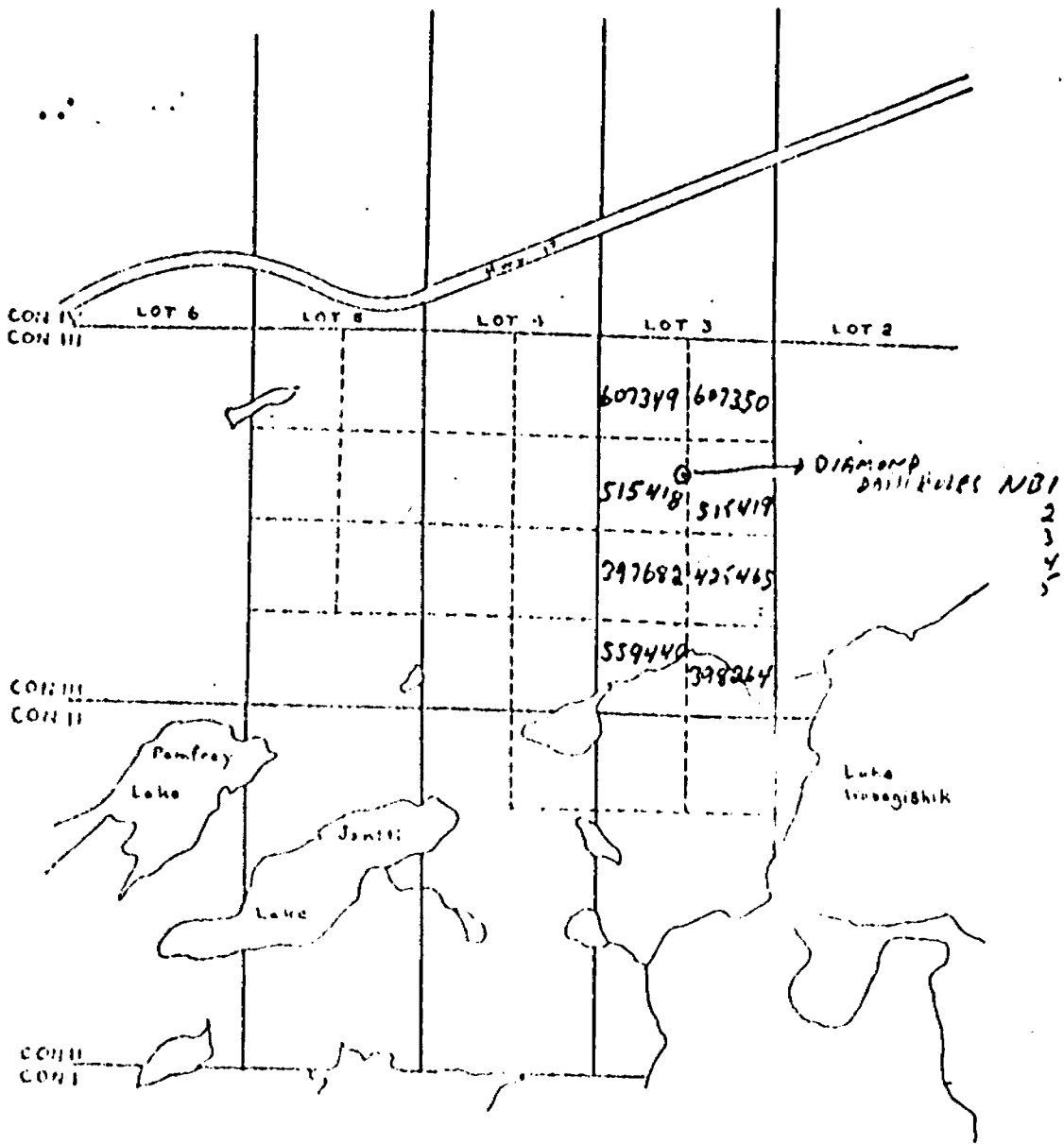
FROM-FT.	TO-FT.	DESCRIPTION
0	2'	SUBURBY GABBRO MIXING DIABASE VERY BROKEN
2'	15'	DISSEMINATED SULPHIDE ZONE
15'	28'	SUBURBY GABBRO - DIABASE VERY BROKEN



DD HOLE # 4
 509' SOUTH #1 post
 19'W of CLAIM LN.

SURFACE DIAMETER DRILL RECORD
 DATE: JUNE 29-30 1981
 LOCATION: NARRAN TWP 17' W, 501'S, FROM N.E. CORNER
 SW 1/4 LOT 3 CONS CLAIM # 515418
 HOLE NUMBER: NB5
 26'
 D. BASTALL
 CORE COMPENSATED CORE INTACT
 HOLE SIZE: 90°
 XRD
 SELF BASTALL & CRILL

FROM - FT.	TO - FT.	DESCRIPTION
0	1'	SUDBURY GABBRO
1'	13'	DISSEMINATED SULPHIDE ZONE
13'	26'	SUDBURY GABBRO.
CORE IS INTACT AT W.M. ANNEK PLACE, SMITH ST NARRAN CREEK CRT		



H.D. HOLE # 5
50' SOUTH #1 POST
171 WEST CLAIM LINE