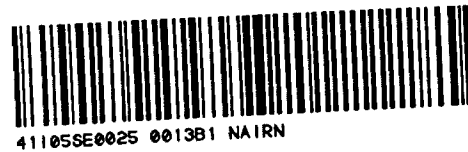


DIAMOND DRILLING



010

TOWNSHIP: Nairn

REPORT No.: 23

WORK PERFORMED BY: E. G. Crick

<u>CLAIM No.</u>	<u>HOLE No.</u>	<u>FOOTAGE</u>	<u>DATE</u>	<u>NOTE</u>
S 607348	NBR1	104.0	May/82	(1)
	NBR2	102.0	May/82	(1)
	NBR3	110.0	June/82	(1)
	NBR4	104.0	June/82	(1)

TOTAL 4DH 420 FT

NOTES: (1) #33-83

SURFACE DIAMOND DRILL CORE RECORD

DATE DRILLED: **MAY 8 - MAY 19 / 1982** LOCATION: **NORTH W. corner of SW 1/4, Lot 2, Con 3, Claim 607348** HOLE NUMBER: **NBR 1**

DRILLED BY: **D. BASTAL** BEARING: **S 30° W** DIP: **40°** HOLE SIZE: **ENT X PD**

Core Contained: Core Intact: Hole Counted: Collar Counted: CONTRACTOR: **EDWARD CRICK NORTH CENTRAL OIL**

FROM - FT.	TO - FT.	DESCRIPTION
0.0	2'	SUBSANT GABARO GREENISH GREY Medium GRAINED
2	3'	BROKEN FRACTURED GABARO
3'	6'	GABARO Med GRAIN
6	7'	BROKEN GABARO
7	10	SUBSANT GABARO Med GRAIN
10	11.6'	FRACTURED Rusty SEAMS GABARO
11.6	12.4	QUARTZ Vein WHITE
12.4	14.6	SUBSANT GABARO Med GRAIN
14.6	15'	BROKEN WHITE QUARTZ Veins
15'	34'	SUBSANT GABARO Med GRAINED
34'	37'	BROKEN FRACTURED GABARO
37	39'	QUARTZ Vein VERY Rusty
39	42'	SUBSANT GABARO Med GRAIN
42	43'	BROKEN FRACTURED GABARO
43	66'	SUBSANT GABARO Med GRAINED
66'	68.6	BROKEN FRACTURED GABARO
68.6	71'	REDISH MIXED QUARTZ + GABARO
71'	78	SUBSANT GABARO

CONT'D -

SURFACE DIAMOND DRILL CORE RECORD

DATE MAY 8 - MAY 19 / 1982	LOCATION Nairn Twp. approx 500' E. 220'S 25' from NW corner of SW 1/4, lot 2, Con 3, Claim 667348	HOLE NUMBER NBR 1
BORED BY D. BASTALL	BEARING S 30 W	DIP 40°
Cure Condensed <input checked="" type="checkbox"/>	Core Intact <input type="checkbox"/>	Hole Cemented <input type="checkbox"/>
	Collar Cemented <input type="checkbox"/>	CONTRACTOR EDWARD CRICK NAIEN CENTRE ONT

FROM - FT.	TO - FT.	DESCRIPTION
98'	78.2"	QUARTZ Vein white
78.2	86'	SUBBURY GABBRO greenish grey MED GRAIN
88	92'	SHEARED ZONE WITH SLIGHT DISMINATED MINERALIZATION CALCOPHYRITES
92	97	FRACTURED BROKEN GABBRO
97	100	SUBBURY GABBRO greenish grey MED GRAIN
100'	103'	SMALL QUARTZ Vein LETS + GABBRO
103	104'	BROKEN SLIGHTLY DISMINATED MINERALIZATION CALCOPHYRITES
		END OF HOLE.

SURFACE DIAMOND DRILL CORE RECORD

DATE: MAY 22 - JUNE 5 1942 LOCATION: Nairn Twp. approx 4152 E. 2355 St HOLE NUMBER: N882
 FROM: NW corner of SW 1/4 Lot 2, Con 3, Claim 602348
 BEARING: N. 10° W DIP: 50° HOLE SIZE: EXT V R P
 Core Condensed Core Intact Hole Cemented Collar Cemented CONTRACTOR: EDWARD CBICK NAIRN CENTRE ONT

FROM - FT.	TO - FT.	DESCRIPTION
0.0	2'	SUBBURY GABBRO MED GRAINED GREENISH GREY
2'	3'	BROKEN GABBRO
3	7'	SUBBURY GABBRO MED GRAIN
7'	7.6	BROKEN GABBRO
7.6	9'	SUBBURY GABBRO
9	12'	BROKEN GABBRO FRACTURED
12	16	SUBBURY GABBRO GREENISH MED GRAIN
16	17	BROKEN FRACTURED GABBRO
17	21	SUBBURY GABBRO
21	22	BROKEN "
22	22.6	RUSTY SEAM
22.6	34	SUBBURY GABBRO
34	36	BROKEN GABBRO
36	37	GABBRO
37	42	BROKEN SLIGHTLY MINERALIZED CALCIFYING RUSTY SEAMS
42	47	GABBRO
47	48'	MINERALIZED ZONE ASSIMILATED CALCIFYING
48	50	SUBBURY GABBRO
50	51	BROKEN GABBRO

SURFACE DIAMOND DRILL CORE RECORD

DATE: June 6 - June 12, 1982
 LOCATION: Nairn Twp. approx 460 E. 175' S 12' E
 FROM NW corner of SW 1/4 lot 2, Con 3, Claim 607348
 HOLE NUMBER: NBR 3
 DRILLER: D. Bassan
 BEARING: SHOE
 DIP: 50°
 HOLE SIZE: EXT 1 1/2"

Core Condensed Core Intact Hole Cemented Collar Cemented
 CONTRACTOR: EDWARD COOKS NAIRN CENTRE ONT

FROM - FT.	TO - FT.	DESCRIPTION
0.0	15'	BROKEN & RUSTY SEAMS SUDBURY GABBRO MED GRAIN GREENISH GREY
15	25'	SUDBURY GABBRO RUSTY SEAMS EVERY 4-6" MED GRAIN " "
25	27'	SUDBURY GABBRO
27	27.6	WHITE QUARTZ VEIN
27	36'	SUDBURY GABBRO MED GRAIN
36	38'	BROKEN QUARTZ VEIN
38	43'	SUDBURY GABBRO
43	47	BROKEN SUDBURY GABBRO
47	49	WHITE QUARTZ VEIN
49	53	SUDBURY GABBRO MED GRAIN GREENISH GREY
53	53.4	MINERALIZED CALC PHYLITE
53.4	55	SUDBURY GABBRO
55	57	QUARTZ VEIN WHITE
57	75	SUDBURY GABBRO
75	77	BROKEN "
77	82	SUDBURY "
82	82.2	QUARTZ VEIN WHITE
82.2	93	SUDBURY GABBRO
93	100'	BROKEN QUARTZ WHITE VEIN 100'-110' SUDBURY GABBRO

CONT'D

SURFACE DIAMOND DRILL CORE RECORD

DATE MAY 22 - JUN 5 1926	LOCATION Nelson Twp. approx N1/2 Sec. 2355 from NW corner of SW 1/4 N 1/2 lot 2, Con 3, Claim 602340	HOLE NUMBER N882
DRILLER D. BASTALL	DIP 50°	WELL SIZE EXT. XRP
Core Condensed <input checked="" type="checkbox"/>	Core Intact <input type="checkbox"/>	Hole Cased <input type="checkbox"/>
Collar Cased <input type="checkbox"/>		CONTRACTOR EDWARD CBICK MAIN CONTRACT

FROM - FT.	TO - FT.	DESCRIPTION
51	55'	SLIGHTLY MINERALIZED SANDSTONE ZONE
55	57	SUBSTRATE GABBRO
57	58	QUARTZ VEIN & SLIGHTLY MINERALIZED ZONE
59	67	SUBSTRATE GABBRO
67	623'	QUARTZ VEIN WHITE
623'	71'	SUBSTRATE GABBRO
71	71'3"	QUARTZ VEIN MINERALIZED CALC PEARLITE & SANDSTONES
71.3	85	SUBSTRATE GABBRO
85	88	BROKEN "
88	92	SUBSTRATE GABBRO "
92	94	BROKEN "
94	96	SUBSTRATE "
96	98	GROUND CORE
98	102	BROKEN & MINOR

SURFACE DIAMOND DRILL CORE RECORD

DATE: June 15-19 1982
 LOG BY: D Basson

LOCATION: Nain Twp. approx 400' E
 FROM NW corner of SW 1/4, Lot 2, Con 3, Claim
 BEARING: S 50° E
 DIP: 70°

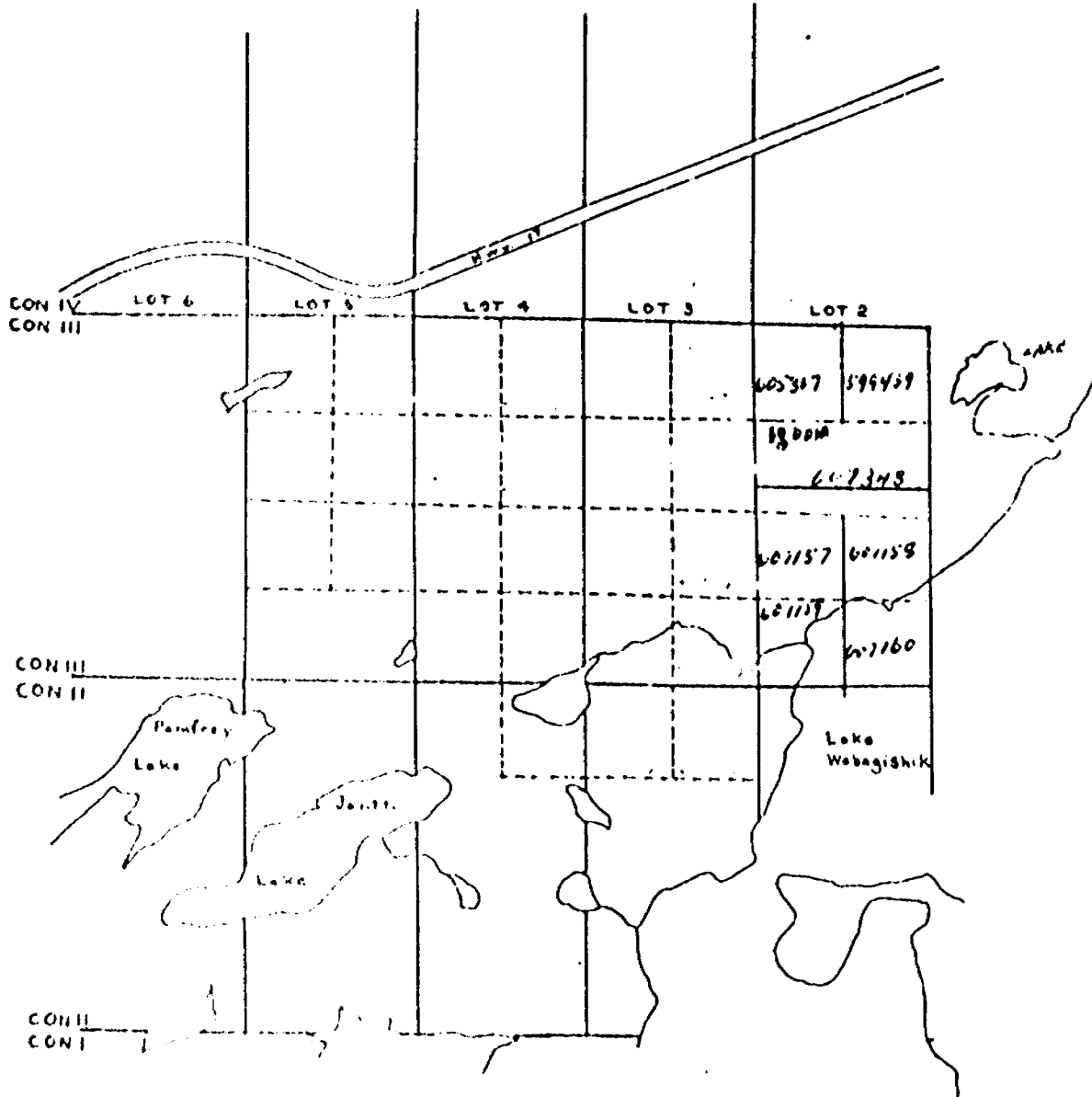
HOLE NUMBER: NBR 4

HOLE SIZE: 6 1/2" YRP

Contractor: EDWARD CRICK MINING CONTRACTORS

Core Condensed Core Intact Hole Counted Collar Coated

FROM - FT.	TO - FT.	DESCRIPTION
0.0	2'	Sudbury Gabbro greenish grey med grain
2'	3'	Broken " " " "
3	3.10'	Mineralizer sulphide
3.10'	5'	Rust & Broken Sudbury Gabbro
5	43'	Sudbury Gabbro greenish grey med grain
43	45'	Broken " " " "
45	57	Sudbury " " " "
57	60'	Quartz veins white
60	65'	Sudbury Gabbro
65	68	Broken " " "
68	72	Sudbury " "
72	72.6	Broken " "
72.6	74	Ground Core
74	74.6	Sudbury Gabbro
74.6	75'	Ground Core
75	78	Broken Gabbro
78	104	Sudbury Gabbro greenish grey med grain



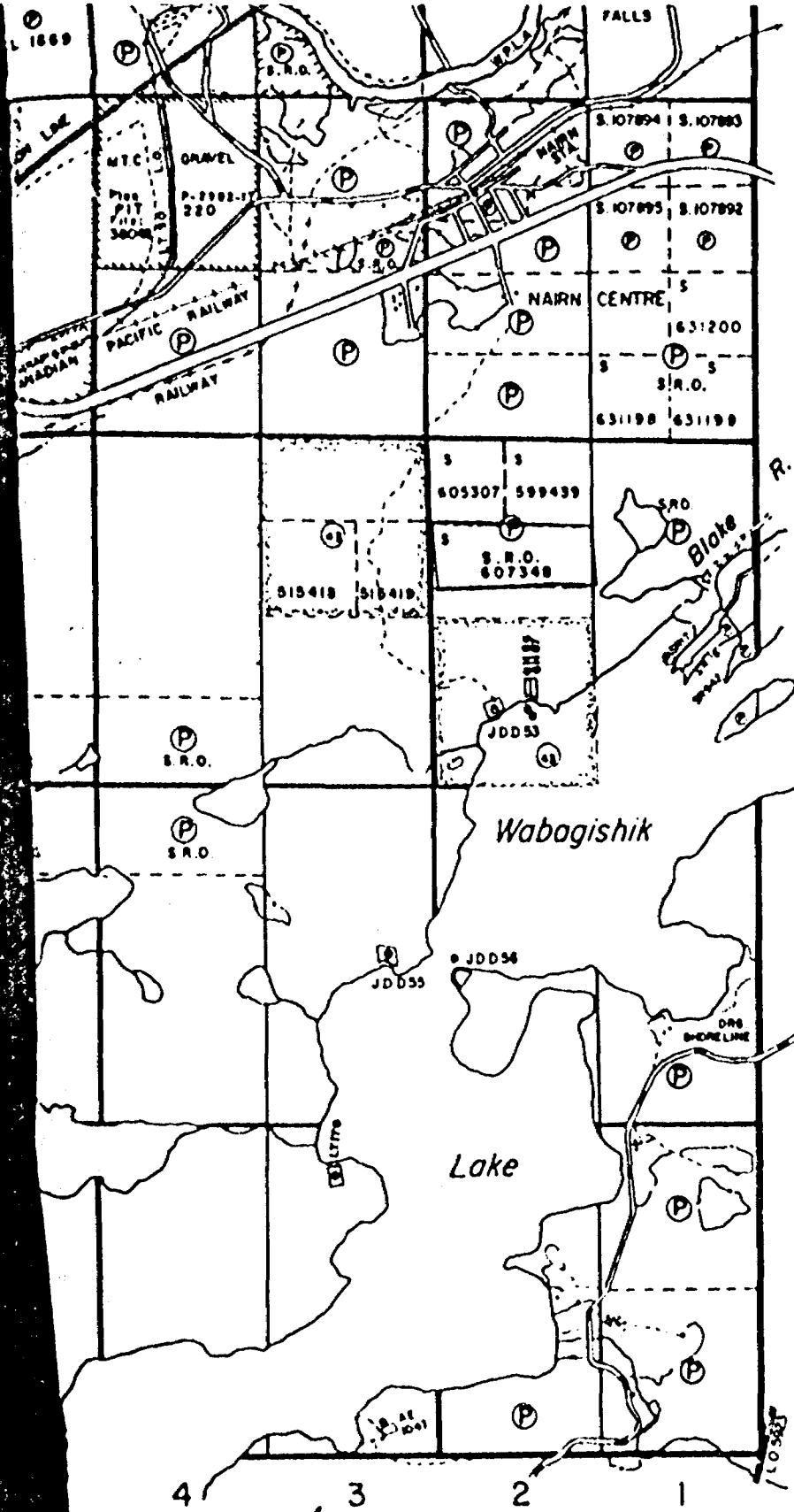
LOCATION MAP

ASSESSMENT WORK, NAIRN TWP.
EDWARD C CRICK - NAIRN CENTRE CRT

DATE:

SCALE: 1" = 1/2 MILE

CLAIM # 5607348



NAIRN TWP
SCALE 1" = 40 CH

Lorne Twp. (M-999)

- LEASES
- LOCATED LAND
- LICENSE OF OCCUPATION
- MINING RIGHTS ONLY
- SURFACE RIGHTS ONLY
- ROADS
- IMPROVED ROADS
- KING'S HIGHWAYS
- RAILWAYS
- POWER LINES
- MARSH OR MUSKEG
- MINES
- CANCELLED
- PATENTED S.R.O.

400' surface rights
 shores of all lakes

Area Shown Thus
 RIGHTS Only With
 Sec 42 of the Min
 File: 77208.

Nairn Twp.
33-83

SURFACE RIGHTS
 Ministry of N.R. in
 and all of Lot 9 C
 File: 77198.

Areas withdrawn fr
 43 of the Mining A
 File
 77201

DATE OF IS
 FEB 28 19
 Ministry of Natural
 TORONTO

PLAN NO. **M.8**

ON
 MINISTRY OF NA
 SURVEYS AND