

DIAMOND DRILL RECORD

PROPERTY MOGUL MINING CORPORATION LIMITED

Hole 44

SHEET NUMBER _____

SECTION FROM _____ TO _____

STARTED _____

~~April 1, 1955~~

April 30, 1955.

LATITUDE EAST 2400

DATUM _____

COMPLETED _____

~~South 10 Oct 1955~~

DEPARTURE South 10 + 85

BEARING 0°

ULTIMATE DEPTH _____

ELEVATION Collar 125'

DIP Collar 70°
-43° -50°

PROPOSED DEPTH _____

Ref: R6, Elev 100'

DEPTH FEET	FORMATION	SAMPLE NO	WIDTH OF SAMPLE	GOLD S	SLUGS OF GOLD
0 - 8	Casing				
8	Altered quartzite core angle 58°				
	bedding faint, Med Gr. sized				
	Impure Quartzite 456.5				
	60-65 Blocky core				
	80 Bedding pronounced CA 60°				
	Occ speck of Pyrrhotite				
	114 Quartose, coarse bedding				
	157.5 Pyrrhotite stringer				
	160-162 Scattered Pyrite 71%				
	170 cherty quartose quartzite				
	186 Impure grayish quartzite argillite				
	200 Bedding strong C.A. 63°				
	250-255 Pyrrhotite 1%				
	280 Rocky Core - some brecciation				
	310 Massive but well banded				
	357 Apparent seasonal banding				
	379 Chloritic alteration mottled with sparse pyrrhotite				

010



411055E0025 NAIRN13A1 NAIRN

-STOCK FORM NO 201 REV 12/51

DRILLED BY _____

SIGNED _____

St. John

DIAMOND DRILL RECORD

Sheet #2

PROPERTY _____

HOLE NO. 44

SHEET NUMBER _____

SECTION FROM _____ TO _____

STARTED _____

April 1, 1955

LATITUDE _____

DATUM _____

COMPLETED _____

April 30, 1955

DEPARTURE _____

BEARING _____

ULTIMATE DEPTH _____

ELEVATION Collar 117'

DIP _____

PROPOSED DEPTH _____

Ref B7 E1 100^a

DEPTH FEET	FORMATION	SAMPLE NO	WIDTH OF SAMPLE	GOLD g	SLUDGE GOLD g
	395 Light Greenish impure quartzite				
	mottled alteration - partially recrystallized				
456.5	Gabbroic - fine grained & chilled at border				
	489.5-493 Red Rock alteration - granitoid				
	497 as above but in cooling points				
	Diabase				
	Tendency to diabasic texture but variable				
	526 Med. grained massive quartz diabase				
	600 Red Rock granitoid alteration				
	640 Coarse grained diabasic				
	679 Fine grained chilled gabbro - sill				
	680 Coarse texture				
768	698 Second sill - chilled contact				
	748 Red Rock granitoid alteration				
	768 End of hole				

DRILLED BY _____

SIGNED _____

A. Steiner

U
MOGAL DRILL LOG NOTES
NAIRN PROPERTY

D.D.H. # A-2.

S13+50, E22+00, Az. North, dip 45 degrees, elev. 125.

Footage.	Lith.
0-5	overburden
5-11	quartz diorite dyke
11-168	quartzite, some breccia at 91
168-190	arkose
190-249	impure quartzite trending to a more chloritic rock.
286	brecciation
409	brecciation
430-440	strong brecciation
450	massive quartzite
487	siliceous quartzite
551	impure quartzite
660	arkose
708-937	diabase
950-952	brecciation and pyrite mineralization
955	chilled contact
975	faint bedding
985-1006	med. gr. gabbro
	end of hole

#####

D.D.H. # B-1.

S7+19, E3+59 Az. 206 degrees, dip 45 deg., elev. 243.

Footage.	Lith.
0-5	casing
5-11.5	gabbro, fine gr., with blueish quartz eyes.
11.5-100	grey impure quartzite
	end of hole

#####

D.D.H. # B2.

S11+00, E3+41, Az. 180 deg., dip 45 deg., elev. 164

Footage	Lith.
0-10	casing
10-95	diabasic gabbro
	end of hole

#####

D.D.H. # B-3.

S11+00, E.3+89, Az. 180deg. dep 45 deg. elev. 155.

Footage		Lith.
0-7	casing	
7-100	diabase	no mineralization

end of hole

#####

D.D.H. # B4

S11+37, E4+00, Az. vert. hole, elev. 152

Footage		
0-7	casing	
7-201	diabase (probably gabbro)	quartz eyes near top of unit.

end of hole

#####

D.D.H. # B-5

S14+00, E4+00, Az 0 deg. dip 45 deg. elev. 100.

Footage		Lith
0-40	casing	
40-450	diabasic gabbro	no mineralization

end of hole

#####

D.D.H. # B-6

S18+00, E4+00, Az. 0 deg. dip 45 deg. elev. 100

Footage		Lith
0-203	casing	
203-342		impure aquartzite.
342-355		diabase dike
355-428		quartzite
428-707		varied diabasic gabbro

end of hole

#####

D.D.H. # B-7

S2+50, E7+54, Az. 123 deg. dip 45 deg. elev. 321

Footage		Lith
0-4	casing	
4-97	med. gr. diabase,	Minor mineralization

end of hole

#####

D.D.H. # B-8

S2+50, E7+54, Az. 57 deg. dip 45 deg. elev. 321

Footage	Lith.	
0-6	casing	
6-53	diabasic gabbro, slight chalcopyrite, pyrrhotite.mineri.	
	end of hole	

~~~~~

D.D.H. # B-9

S2+50, E7+54, Az 332 deg. dip 45 deg. elev. 321

|         |                              |             |     |
|---------|------------------------------|-------------|-----|
| Footage | Lith                         | Values: Cu. |     |
| 0-3     | casing                       |             | .40 |
| 3-7.    | diabase, scattered sulphides |             | 133 |
|         |                              |             | .57 |
|         |                              |             | .06 |
|         | end of hole                  |             | 107 |

~~~~~

D.D.H. # B-10

S2+50 E7+54, Az. ~~332~~ 332 deg. dip 60 deg. elev. 321

Footage	Lith:
0-3	casing
3-166	diabase'
	end of hole

~~~~~

DD.H. # B-11

S1+95, E7+00 Az. 145 degs. dip 60 degs. elev. 326

|          |                            |            |         |
|----------|----------------------------|------------|---------|
| Footage  | Litho                      | Values Cu. |         |
| 0-3      | casing                     |            | .43     |
| 3-71     | diabase ( probably gabbro) |            | Ni. .05 |
| 71-80    | olivine diabase            |            |         |
| 80-165.3 | diabasic gabbro            |            |         |
|          | end of hole                |            |         |

~~~~~

D.D.H. # B-12

S1495, E7400, Az. 190 deg. dip 60 deg. elev. 326

Footage
03
3-160.2

Litho
casing
diabasic gabbro

At 147, there was a 4" seam of chalco/pyrrhotite.

D.D.H. # B-13

S6470, E14400, Az. 180 deg. dip 65 deg. elev. 244

Footage
0-5
5-849
849-875

Lith
casing
varied diabasic gabbro with scattered sulphides
quartzite, extreme alteration with gabbroic sections
and minor sulphides.

end of hole

|||||

D.D.H. B-6 was used as the base elevation of 100 feet.

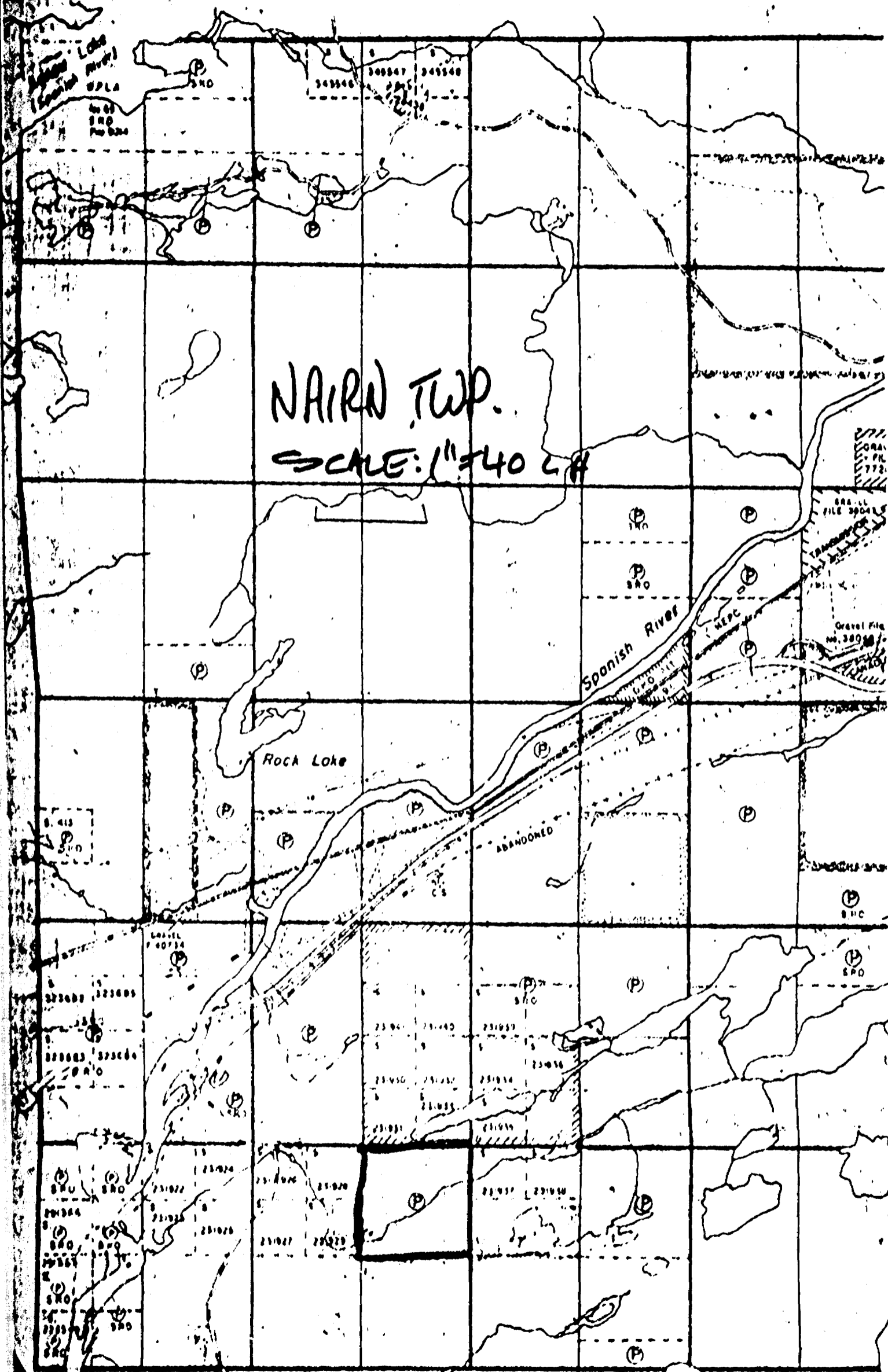


41105SE0026 NAIRN13A1 NAIRN

Hyman Twp. (M-945)

900

NAIRN TWP.
SCALE: 1" = 40 CH

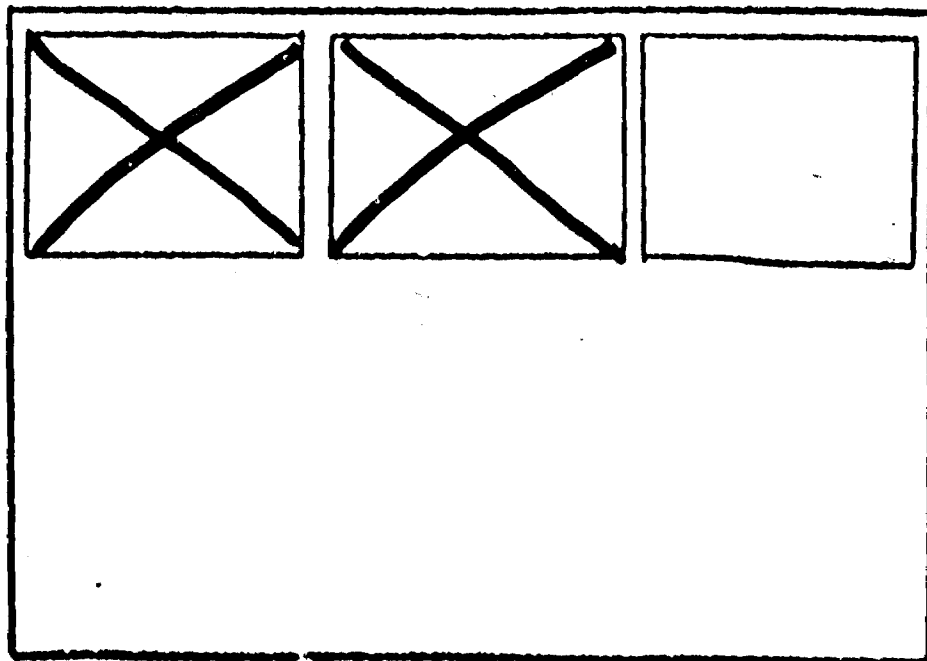


12 11 10 9 8 7 6 5

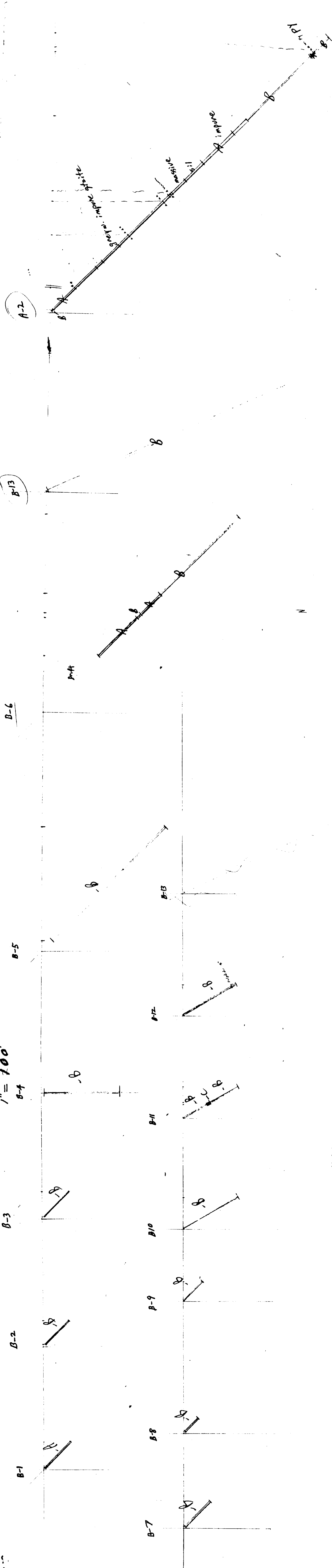
SEE ACCOMPANYING
MAP(S) IDENTIFIED AS
NAIRN-0013-A1-#1

#2

LOCATED IN THE MAP
CHANNEL IN THE FOLLOWING
SEQUENCE (X)

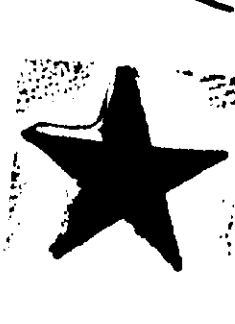


MOGUL DRILL SECTIONS FROM NAIRN TWP
1" = 100'



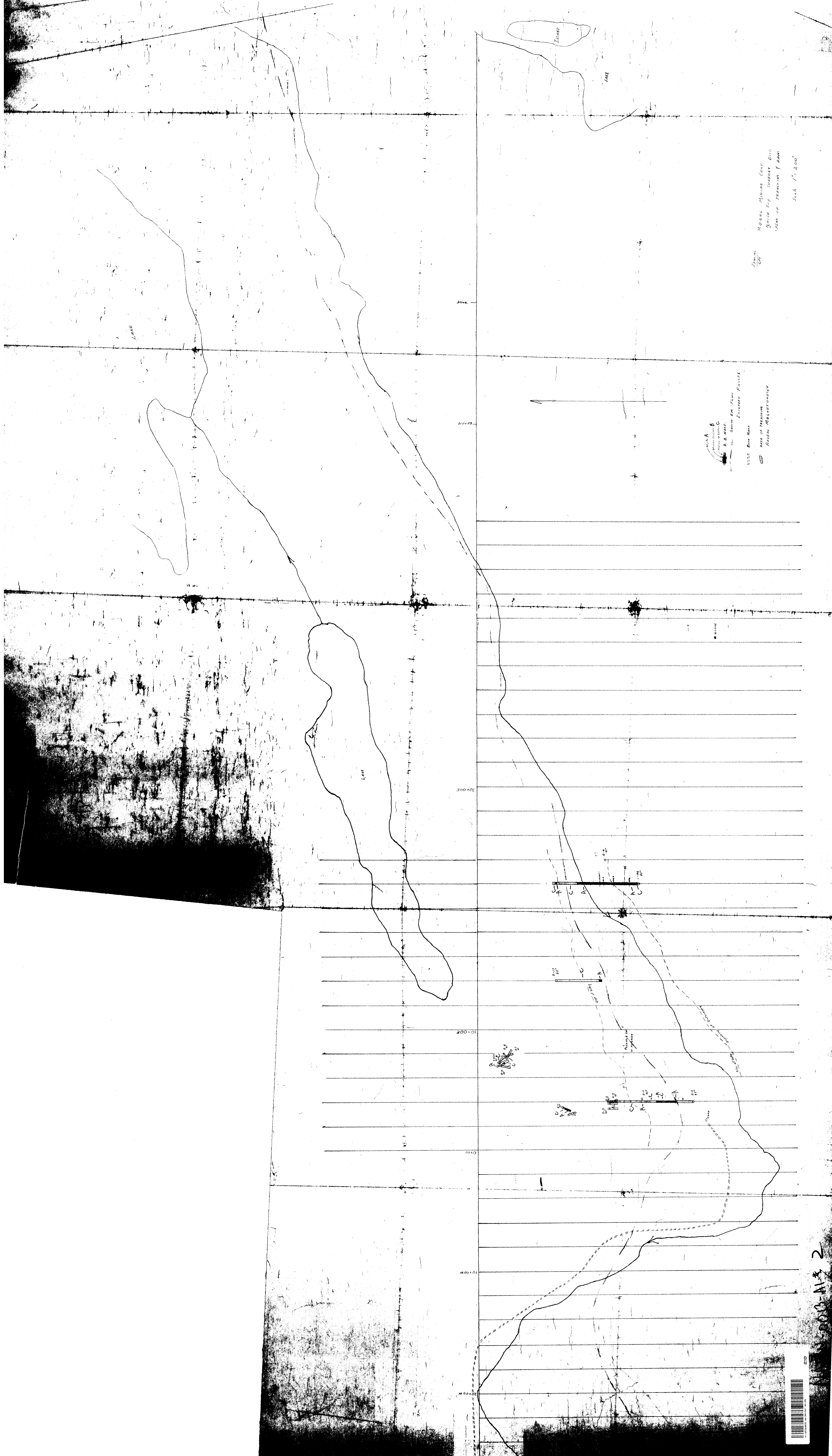
- 1006
- 95
- 100
- 201
- 450
- 207
- 97
- 53
- 71
- 166
- 160
- 160
- 875

- A ○ Quartzite
- B ○ Gabbro-d.i.a.base
- C ● Olivine diabase



NAIRN-0013-A1-71





MOORE MINING CORP.
 SHOW TOP SURFACE DISE.
 PLAN OF PREVIOUS F. PLAN
 Scale 1" = 200'

SINK A
 SINK B
 SINK C
 B.B. HOLE
 GREEN EM TANK
 ZINCED FENCE
 AREA OF PREVIOUS
 RECENT MEASUREMENTS
 BORDER

800-A13 2

