

Diamond Drilling



41105SE0038 0012C1 NAIRN

010

Township of NAIRN

Report NO 20

Work performed by: Wm. Alanen

Claim NO	Hole NO	Footage	Date	Note
S 397682	1	104.0'	May/77	(1)
	2	101.0'	May/77	(2)
	3	104.0'	June/77	(2)

---

TOTAL 3 PH 309 FT.

Notes.

(1) #59-77

(2) # 1-78





Alanen Claim 39/682

Hole #2 S50°E at 45° 525'S and 660'W of No.1 Post

0-10': - fine-grained partly altered mafic rock

10'-48': - well foliated mafic rock with a few specks of sulfides (po-py); about 30% quartz; large clots of brown biotite; mafics altered to chlorite and amphibole.

48'-90': medium-grained, less altered massive gabbro

90'-100': medium-grained, leucocratic gabbro

100'-101': medium-grained gabbro





Alanen Claim 397682

Hole #3 S42°E at 45° 497'S and 636'W of No. 1 Post

- 0-2' : casing
- 2'-56' : fine-grained mafic rock with rounded plag. grains; massive
- 56'-60.5' : well-foliated, sheared mafic rock; ~ 20% biotite porphyroblasts
- 60.5'-63.5' : disseminated py-po with some cpy; sheared and well-foliated
- 63.5'-64' : foliated mafic rock
- 64'-66' : disseminated py-po with some cpy; large clots of brown biotite; quartz common
- 66'-69.5' : altered, partly foliated mafic rock
- 69.5'-71' : mineralized-disseminated po-py - some cpy; blue quartz common
- 71'-75' : massive, fine-grained mafic rock
- 75'-100' : fine-grained massive gabbro with medium-grained phases
- 100'-104' : quartz-bearing, massive mafic rock

W. Glanville

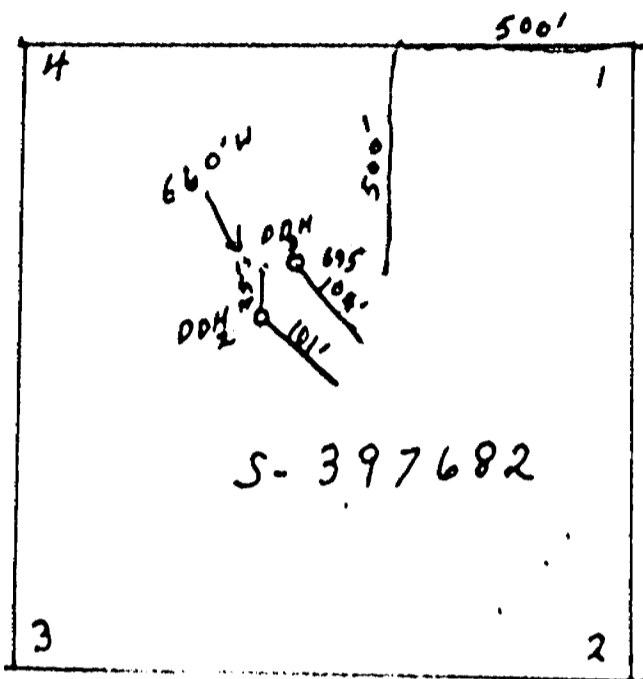
Not  
Post

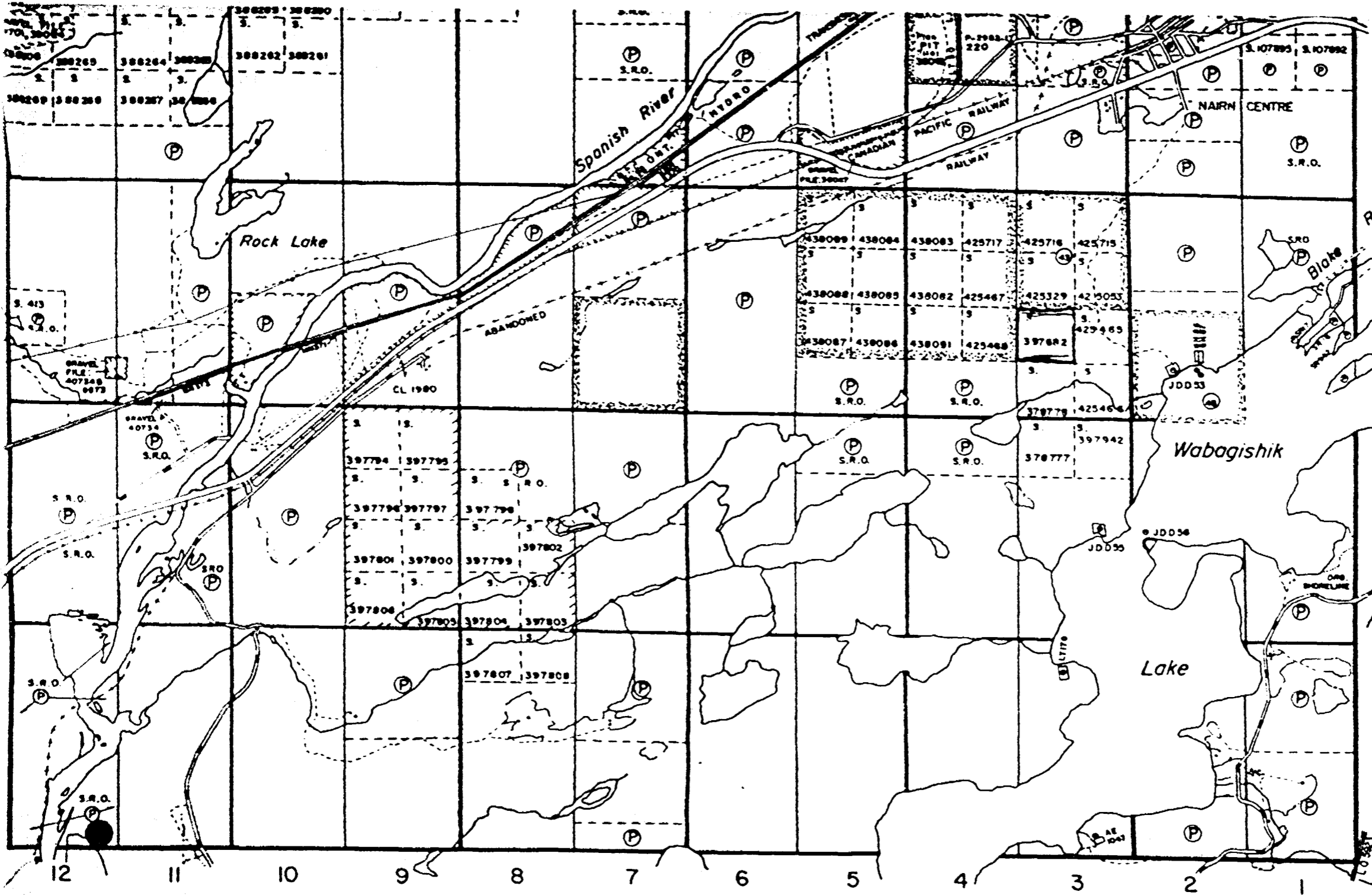
D.H. 618'W Not
5397682

527.5

ST. HURV  
RECEIVED  
JUL 12 1977  
P.M.







IV

III

II

Lorne Twp. (M-999)

NAIRN  
TWP.  
#59-77  
Wm.  
Alaman

RO  
IMP  
KIN  
RA  
PO  
MA  
MI  
CA  
PA

40  
sh

Pi