



41105SE0054 0019A1 NAIRN

010

63,604  
NAIRN TWP.

RESULTS OF AN  
ELECTROMAGNETIC SURVEY  
on  
THE PROPERTY  
of  
MOGUL MINING CORPORATION, LTD.  
NAIRN TOWNSHIP...  
ONTARIO

INTRODUCTION:

An electromagnetic survey was carried out on the property of Mogul Mining Corporation, Ltd., in Nairn Township, Ontario during the months of January and February 1955.

Three strong conducting zones and several weak zones were located by the survey.

LOCATION & ACCESSABILITY:

The property is located about 30 miles west of Sudbury, Ontario. It is easily accessible by road and rail, being a short distance south of No. 3 Highway and the main C.P.R. line running between Sudbury and Blind River. A bush road joins the property to the Highway.

RESULTS:

Anomaly "A" is a strong conducting zone running in an east-west direction across the entire property.

It is believed to be a strong shear zone.

In places the zone is a very strong conductor; i.e: Line 22, 24 & 26 west at 1300 S; lines 4 W, 2 W, 0, 2 E, 4E & 6E at about 1500 South; lines 18 E, 20 E, 22 E, 24E & 26E at about 700 South; and from line 78 E to 92 E inclusive.

These stronger sections are believed to be caused by either graphite or sulphide mineralization. As sulphide mineralization occurs in the area, there is a very good possibility that these stronger anomalies are due to mineralized zones.

Anomaly "B" is also a strong conducting zone located 1500 feet north of anomaly "A". It is believed to be a parallel shear zone.

Anomaly "C" towards the north of the property is similar to "B", but weakens at the eastern end and disappears on line 3800 E.

The other zones indicated are all fairly weak conductors.

#### RECOMMENDATIONS:

It is recommended that the zones indicated be checked magnetically and that an extensive diamond drilling program be laid out to explore fully the possibilities of the property.

The dip of the zone is to the south.

At least four holes should be drilled on the "A" conductor to test the stronger sections and one each on the "B" and "C" anomalies.

Suggested holes are as follows:

- |              |        |
|--------------|--------|
| 1. Line 24 W | 1650 S |
| 2. Line 2 W  | 1700 S |
| 3. Line 20 E | 1100 S |
| 4. Line 82 E | 1150 N |
| or Line 90 E | 1350 N |
| 5. Line 38 E | 900 N  |
| 6. Line 30 E | 2900 N |

Respectfully submitted,



Ivan Christopher, B. Sc.P. Eng.

IC/mc

Bathurst, N. B.  
March 4, 1955

August 12th, 1955.


MOGUL MINES LIMITED

Summary of personnel engaged on the  
Electromagnetic Survey performed on  
the property of Mogul Mines Limited  
in Nairn Township, in the Province  
of Ontario.

Man day distribution from: January 12, 1955 to  
February 11, 1955

---

<u>Men Employed</u>	<u>Man Days</u>
Al Smith	31
A. Hatters	31
J. McAloon	15
I. Christopher	10
T. Cripps	5
B. Jarnason	5
<u>Total</u>	<u>97 Man Days</u>

  
I. G. Christopher.

MOGUL MINING CORPORATION LIMITED

ALLOCATION OF ASSESSMENT WORK

(1) Line Cutting

<u>Period</u>	-	Dec. 6/54	-	Jan. 20/55
<u>Length</u>	-	52 miles		
<u>Contractor</u>	-	Stanley Grimsell		
<u>Character</u>	-	Lines are cut at 200 foot intervals in north-south direction.		
<u>Workmen</u>	-	Stanley Grimsell	-	44 days
		Stanley Wainman	-	41 days
		Alfred Wainman	-	43 days
		William Alnen	-	44 days
		Total	-	215 days

All are residents of Worthington, Ont.

Credit: Claims 881207-10, incl; 79164-68 incl; 80806-09 incl; 880943-47 inc; 81078-81, incl; 81362; and 81109 are located in Main Twp, Sudbury Mining Division

Maximum allowance = 24 claims = 120 days  
Total allowance x factor A = 480 days

(2) Magnetometer Survey

The instrument used was a Sharpe DMI Magnetometer. The purpose of the survey was to check the indicated anomalous areas of the electromagnetic survey for abnormal terrestrial magnetism due to the presence of magnetic sulphides. A map is enclosed showing the stations read, corrected to read in gammas and adjusted for diurnal and magnetic storm influences.

D. M. Coates, Civil Engineer and P. Henry, assistant, completed the field and office work during the period March 22-May 14th, 1955.

D. M. Coates	-	38 days
J. P. Henry	-	42 days
		<u>80 days</u>

Credit: Claims 8-81207-10; 79164-68 inc; 81078-81 incl; 80943-47 inc; 80806-09 inc; 81362; 81109

(3) Electromagnetic Survey

Report as filed by Ivan Christopher, Geophysicist in charge of operation:

<u>Operators:</u>	Al. Smith, Bathurst, N.B.	-	31 days
	P. Waters, " "	-	31 "
	J. McAlloon " "	-	31 "
			<u>93</u>

MOGUL MINING CORPORATION LIMITED

SUMMARY OF ALLOCATION OF ASSESSMENT WORK - MAIRN TWP.

Claim	Line Cutting and Geophysical	Rock Trench- ing	Diamond Drill- ing	TOTAL
S-81207 ✓	40 Days		42.6 Days	82.6 Days
8 ✓	40 "		42.6 "	82.6 "
9 ✓	40 "		42.6 "	82.6 "
10 ✓	40 "		42.6 "	82.6 "
S-79164 ✓	40 "		42.6 "	82.6 "
65 ✓	40 "		42.6 "	82.6 "
66 ✓	40 "		42.6 "	82.6 "
67 ✓	40 "		42.6 "	82.6 "
68 ✓	40 "		42.6 "	82.6 "
S-80806 ✓	40 "		42.6 "	82.6 "
09 ✓	40 "		42.6 "	82.6 "
08 ✓	40 "		42.6 "	82.6 "
09 ✓	40 "		42.6 "	82.6 "
S-80944 ✓	40 "		42.6 "	82.6 "
45 ✓	40 "		42.6 "	82.6 "
46 ✓	40 "		42.6 "	82.6 "
47 ✓	40 "		42.6 "	82.6 "
S-81081 ✓	40 "		42.6 "	82.6 "
S-80943 ✓	40 "			40 "
S-81078 ✓	40 "			40 "
79 ✓	40 "			40 "
80 ✓	40 "			40 "
S-81362	40 "			40 "
S 81109 ✓	40			40
	<u>960</u>		<u>766.8</u>	<u>1726.8</u>

*A. Scher*

Forward 77 days

Draughtsman and Office work:

T. Cripps -	5 days
B. Jarnason -	5 days
I. Christopher -	<u>10 days</u>
	97 days

Credit: Claims S 81207-10 inc. 79164-68 inc; 80943-47 inc; 80806-09 inc. 81362; 81109.

Additional Re Survey

(A) Magnetic Survey

June 6th - 10th, 1955

D. M. Coster

Re Claims 79167, 79166, 80806 5 days

Total Geophysical Survey = 182 days.

Man day equivalents x factor = 728 days

Man day Credit for 24-claim group =  $\frac{728}{24} = 30.3$  days

Total Line Cutting & Survey

Since the line cutting and geophysical surveys are limited to a maximum of 40 man day equivalents, the above credit of 40 man days is applicable to the above stated 24 claim group.

Rock Trenching

The rock trenching reported and shown on the accompanying map is entirely within a patented lot and hence not applicable to unpatented claims.

Diamond Drilling

A total of 5039' of drilling was completed with only one hole, A4, without the patented lot and located in claim 79167. The drilling was "A" core size. The contractor was Cameron Diamond Drilling Co., of Malartic, Quebec. The drilling was completed during the period March-August 1955. Hole A4 was drilled during the period March 15-30th.



An application for the grouping of 18 claims contiguous to 79167 is requested and the following footage of 768 feet is applicable to the following contiguous claims:

S-79164-79168; S-81207-10 inc; S 80806-80809; 80944-80947 and 881081.

Footage A4 - claim 79167 = 768 feet

Credit: above 18 claims =  $\frac{768}{18}$  = 42.6 man days.

A drill plan of all holes and the logs in duplicate of Hole A4 are enclosed.

*W. Weber*  
W. Weber,  
Consulting Geologist

Office of the Mining Recorder

electromagnetic field have been recorded at the stations noted at 100' intervals, and the distortions due to abnormal conductivity are noted in the heavy dashed lines.

We have indicated on the attached schedule the positions of the men attached to this survey.

With regard to the drilling, a single hole, M, was drilled on unpatented ground, Claim S-79167. A grouping is requested for the following claims with an additional 42.6 days credit per claim: S-81207-10 inclusive; 79164-8 incl.; 80944-47 incl.; 80806-09 incl.; and 81081.

Since this option has been terminated, the Company will not retain its claims 83161-66 incl. and they will be allowed to lapse. Likewise records of work performed on S-81520-81529 under option will be returned to the originals for filing.

We trust the above information will suffice for your purpose. We wish to thank you for your attention and co-operation.

Yours very truly,

MOGUL MINING CORPORATION LIMITED



W. W. Weber,  
Consulting Geologist.

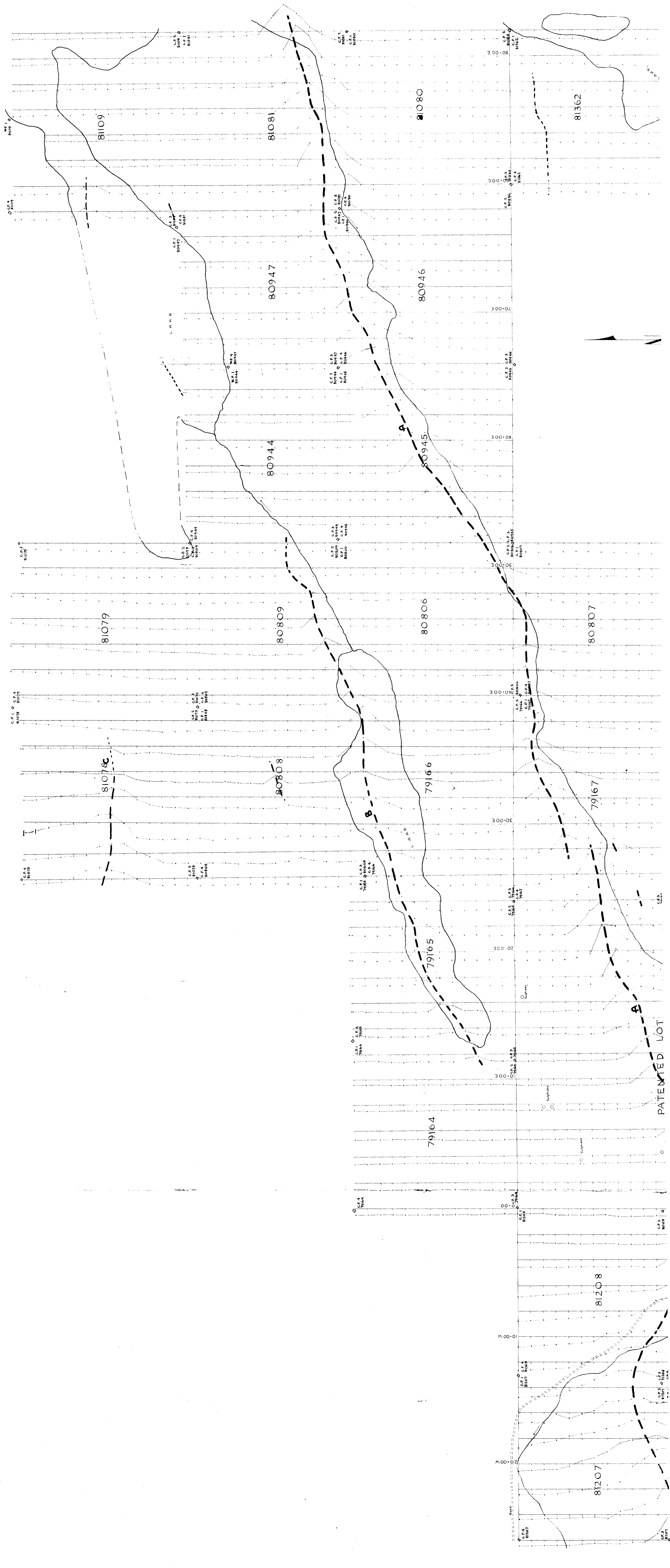


WWW:BD  
Encls.

FOR ADDITIONAL  
INFORMATION

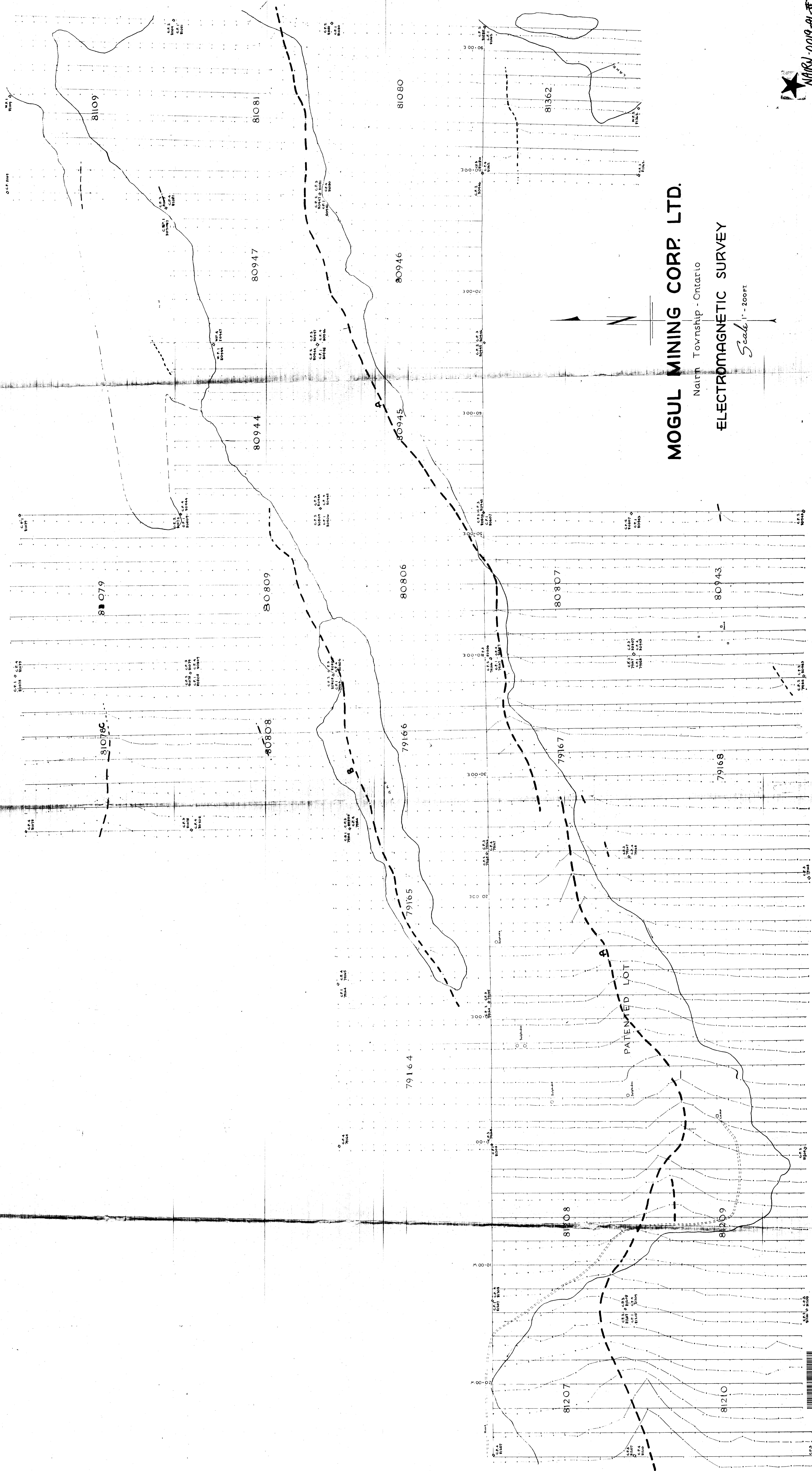
SEE MAPS:

NAIRN-0019-A1 # 1-4



PATENTED LOT





**MOGUL MINING CORP. LTD.**

Nairn Township - Ontario

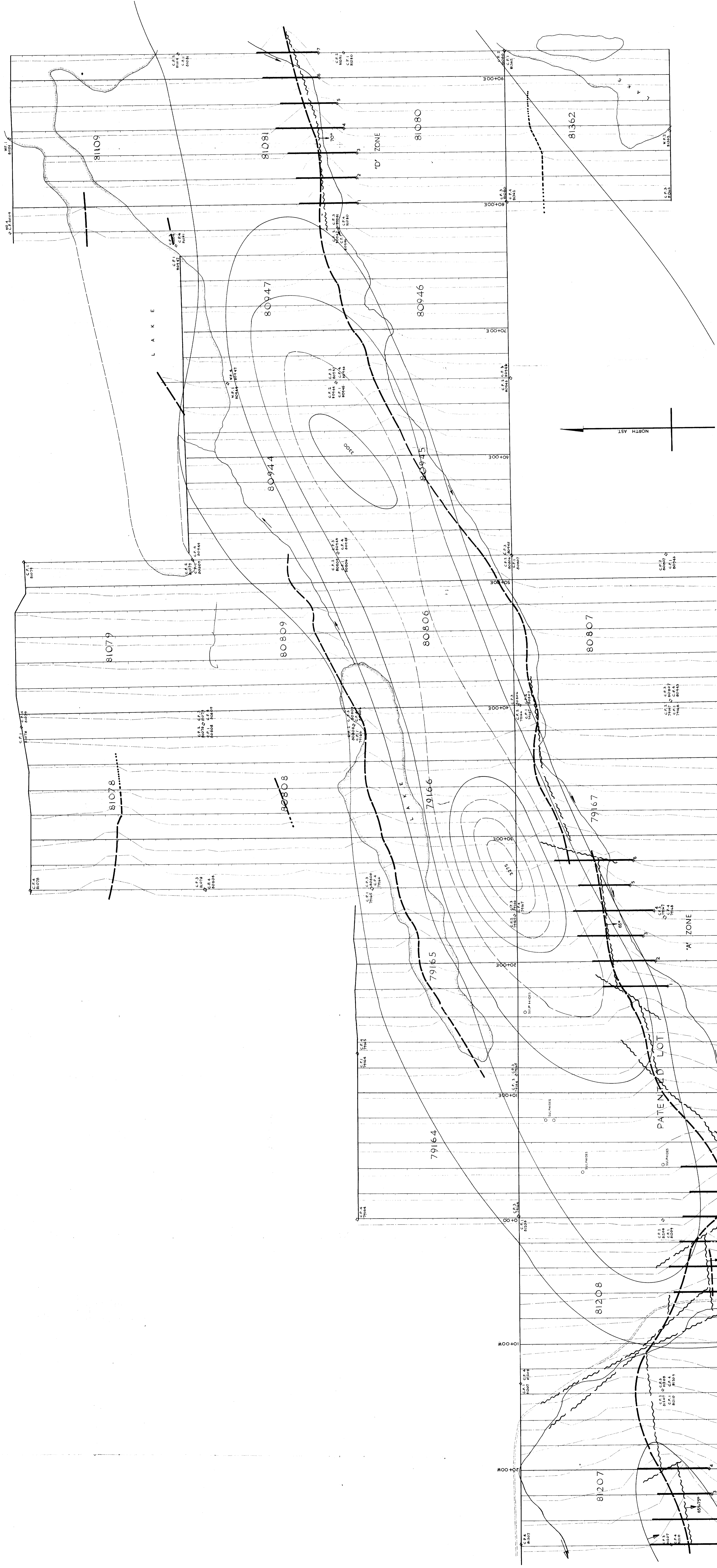
**ELECTROMAGNETIC SURVEY**

Scale 1" = 200 FT



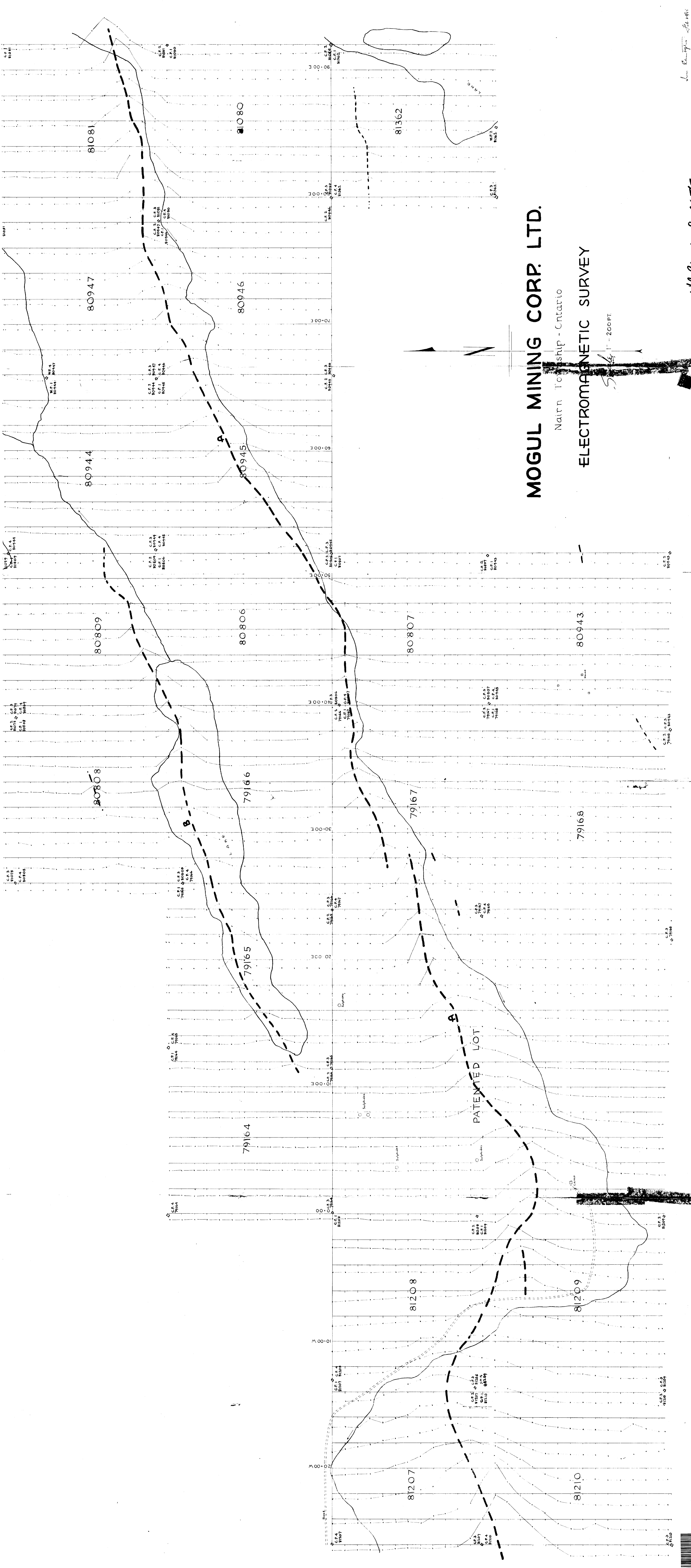
NARN-0019-41-43











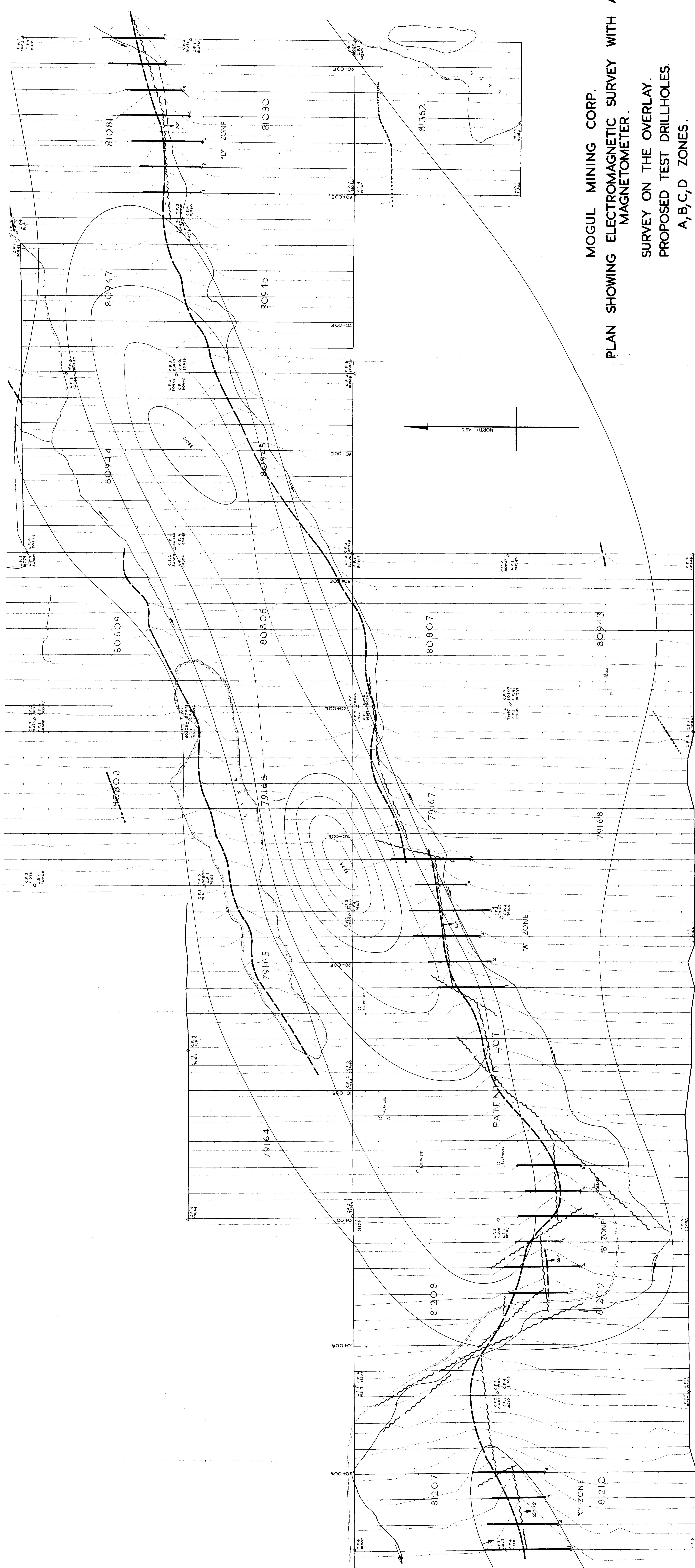
**MOGUL MINING CORP. LTD.**

Nairn Township - Ontario

**ELECTROMAGNETIC SURVEY**

Scale 1" = 200 FT



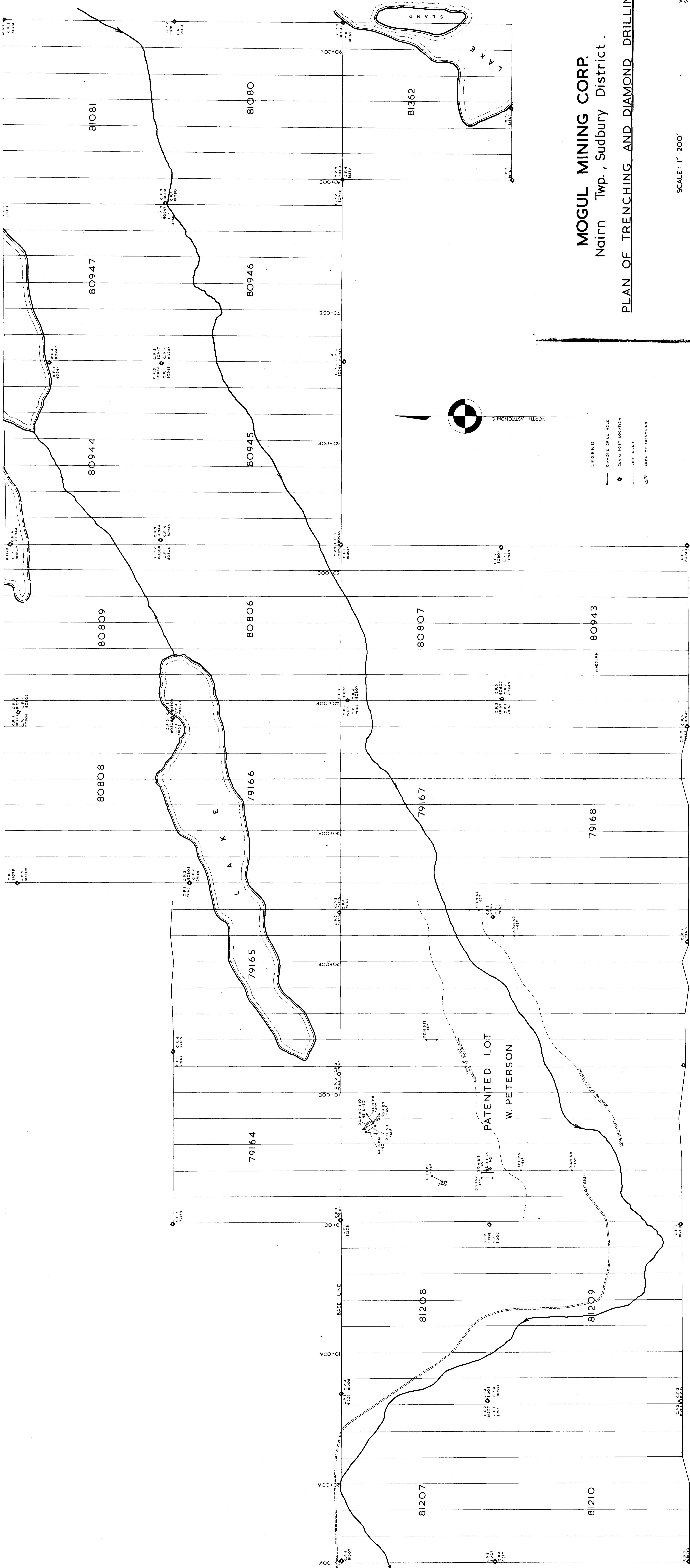


MOGUL MINING CORP.  
 PLAN SHOWING ELECTROMAGNETIC SURVEY WITH AERIAL  
 MAGNETOMETER.  
 SURVEY ON THE OVERLAY.  
 PROPOSED TEST DRILLHOLES.  
 A, B, C, D ZONES.

SCALE: 1"=200'

W. WEBER,  
FEBR. 1955.

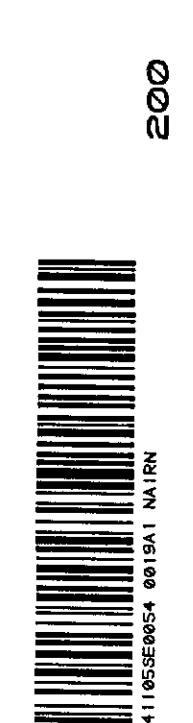
Naim Twp., Sudbury District.



**MOGUL MINING CORP.**  
 Nain Twp., Sudbury District.

**PLAN OF TRENCHING AND DIAMOND DRILLING**

SCALE: 1"=200'  
 W. WEBER  
 SEP. 1955



2000  
 NAIN-0019-A1

NAIN-0019-A1-12