



41105SE0090 0010A1 BALDWIN

010

# Diamond Drilling

Township OF BALDWIN

Report NO: 16

Work performed by: FEDERAL KIRKLAND MINING COMPANY

Claim NO	Hole NO	Footage	Date	Note
S 29401	<u># 28</u>	<u>422'</u>	May/57	
	TOTAL: 1 DH	422'		

Notes:

LOCATED ALONG BOUNDARY LINE BETWEEN LOTS 54 & 55  
 AT A POINT 380' EAST OF THE LINE BETWEEN LOTS 54  
 & 6 BALDWIN & 52.5' SOUTH OF THE BOUNDARY.

# DIAMOND DRILL RECORD

PROPERTY Baldwin Property of Federal Rickland Mining Co. HOLE No. 28.

SHEET NUMBER 1 SECTION FROM between TO between STARTED May 31/57

LATITUDE located along the boundary line between DATUM between COMPLETED June 3/57

DEPARTURE east of the line between lots 54 & 6 Baldwin BEARING N-18°W ULTIMATE DEPTH N-18°W

ELEVATION collar - 35.00 DIP 100' - 27.00 PROPOSED DEPTH collar - 35.00  
350' - 138.00 100' - 27.00 350' - 138.00

DEPTH FEET	FORMATION	SAMPLE NO.	FROM	TO	WIDTH	ASSAY VALUES			
0.00	6.0 - Casing.								
6.0	14.0 - quartzite, fine grained, slightly sheared and sericitic - schist at 45 deg.								
14.0	39.0 - quartzite, fine grained to medium finely massive.								
39.0	130.5 - quartzite, fine grained, dark green to almost black, being well sheared at 65° - well sericitized.								
130.5	131.0 - graywacke and quartzite, well sheared to 131'; schist at 30-45°, a few black hairlike fractures.								
	122-127 - conglomerate - pebbly.								
131.0	149.0 - quartzite - medium - fine grained, massive.								

*W.P. Muehlen*

# DIAMOND DRILL RECORD

PROPERTY Bakwin. HOLE No. 28.  
 SHEET NUMBER 2. SECTION FROM ..... TO ..... STARTED .....  
 LATITUDE ..... DATUM ..... COMPLETED .....  
 DEPARTURE ..... BEARING ..... ULTIMATE DEPTH .....  
 ELEVATION ..... DIP ..... PROPOSED DEPTH .....

DEPTH FEET	FORMATION	SAMPLE NO.	FROM	TO	WIDTH	ASSAY VALUES			
149.0 - 214.5	quartzite, medium grained, massive, an occasional section slightly sheared at 45° and sericitic.								
214.5 - 243.8	quartzite, medium to fine grained, fairly well sheared								
241.8 - 242.6	quartz, some pyrite and a little chole.								
243.8 - 297	quartzite, medium grained, an occasional section well sheared with some quartz and a little alteration present at 272 - 8 in. gray quartz.								
From 287.5 -	fairly well sheared and altered, an occasional blue quartz stringer and speck of pyrite and a little chole.								
290 - 291.3	blue quartz & little pyrite and chole.								

NORTHERN MINER FORM 805 REV. 74

DRILLED BY \_\_\_\_\_

SIGNED \_\_\_\_\_

*W. J. ...*

# DIAMOND DRILL RECORD

PROPERTY Baldwin HOLE No. 28  
 SHEET NUMBER 3 SECTION FROM \_\_\_\_\_ TO \_\_\_\_\_ STARTED \_\_\_\_\_  
 LATITUDE \_\_\_\_\_ DATUM \_\_\_\_\_ COMPLETED \_\_\_\_\_  
 DEPARTURE \_\_\_\_\_ BEARING \_\_\_\_\_ ULTIMATE DEPTH \_\_\_\_\_  
 ELEVATION \_\_\_\_\_ DIP \_\_\_\_\_ PROPOSED DEPTH \_\_\_\_\_

DEPTH FEET	FORMATION	SAMPLE NO.	FROM	TO	WIDTH	ASSAY VALUES			
297.0 - 299.0	greywacke - fine grained, well sheared and altered, an occasional blue quartz stringer.								
299.0 - 318.0	greywacke, very fine grained, well sheared and altered, an occasional blue quartz stringer and trace of mica.								
318.0 - 357.0	greywacke, very fine grained, well sheared, at 347.5 - 4. in. blue quartz, a little pyrite.								
357.0 - 391.5	quartzite - medium to fine grained, slightly sheared and sericitic, some spots of blue quartz and slightly altered with some small disseminated pyrite.								
391.5 - 422.0	quartzite, medium grained, slightly altered to medium gray, an occasional small fracture, blue quartz stringer with some pyrite.								

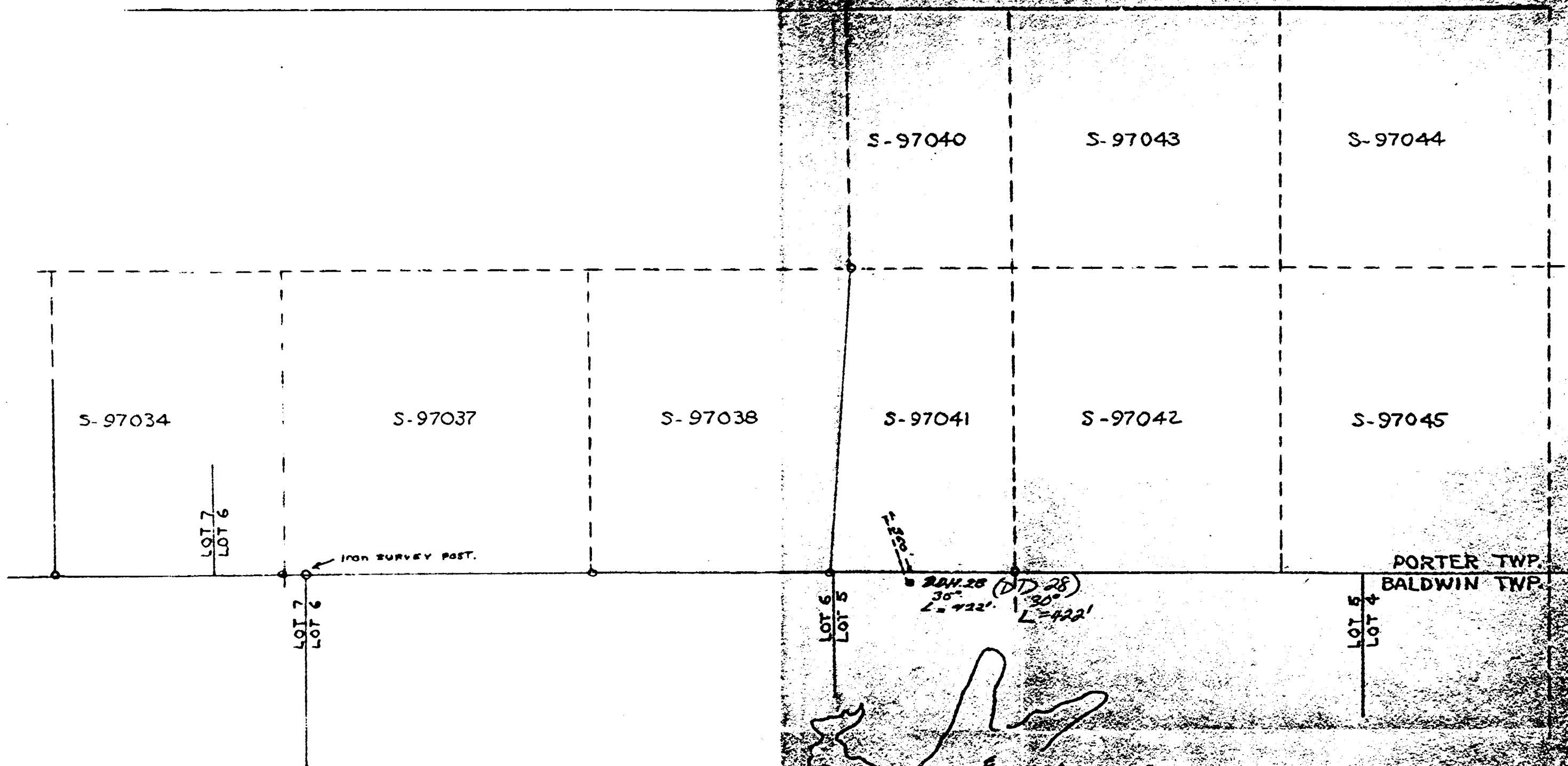
NORTHERN MINER FORM 303 REV. 1964

DRILLED BY

*Inspiration Drilling Co.*

SIGNED

*J.P. Muehl*



RECORDING OF WORK ON MINING CLAIMS IN PORTER TWP.

SCALE-1-IN=500 FT

APR 1957