



41105SW0033 0018 BALDWIN

010

# Diamond Drilling

Township OF BALDWIN

Report N<sup>o</sup>: 13

Work performed by: FEDERAL KIRKLAND MINING COMPANY

Claim N <sup>o</sup>	Hole N <sup>o</sup>	Footage	Date	Note
S 89405	# 11	437'	Sept/56	
	# 13	618'	Sept/56	
	# 14	805'	Sept/56	
	# 15	214'	Oct/56	
	# 23	158'	Nov/56	
S 85320	# 12	284'	Sept/56	
	# 16	238'	Oct/56	
	# 17	405'	Oct/56	
	# 18	175'	Oct/56	
	# 19	227'	Oct/56	
S 35014	# 20	482'	Oct/56	
	# 24	644'	Nov/56	
S 89406	# 21	228'	Oct/56	
	# 22	311'	Nov/56	
	# 25	618'	Nov/56	
	# 26	565'	Nov/56	

TOTAL: 16DH 6409 FT

Notes:

7-18

# DIAMOND DRILL RECORD

PROPERTY FEDERAL / BALDWIN HOLE No. 11  
 SHEET NUMBER 1 SECTION FROM                      TO                      STARTED Sept. 5/56  
352 ft. south of Baseline A  
 LATITUDE and 100 ft. east of DATUM                      COMPLETED Sept. 10/56  
0.00  
 DEPARTURE 44.86 BEARING N- 20-30-W. ULTIMATE DEPTH 437 ft.  
 ELEVATION 25.00- 42 deg. ; 375- 39 deg. PROPOSED DEPTH                     

DEPTH FEET	FORMATION	SAMPLE NO.	FROM	TO	WIDTH	ASSAY VALUES			
0.00 -- 12.00	Casing								
12.00 -- 153.40	Greywacke, dark grey-green, in general, well sheared and talcose. schist- 75 deg. - 60 deg. to core.								
153.40 -- 158.00	Quartzite, medium grained, dark grey, slightly sheared in places.								
158.00 -- 168.00	Impure quartzite ?, dark grey-green, dense, highly siliceous and silicified. 159-162- 25 % quartz stringers with a little chalcopryite and pyrrhotite.								
168.00 -- 176.00	Silicified Greywacke- dark grey, fine grained, fairly well sheared and silicified.								
176.00 -- 178.50	Blue-grey, dense, silicified Greywacke?. 176-177.5- 40 % quartz, some pyrite and chalcopryite.								
178.50 -- 182.50	Greywacke, blue-grey, dense, silicified ( impure quartzite ? )								
182.50 -- 199.00	Greywacke, dark grey-green, fairly well sheared at 50 deg.								
199.00 -- 202.00	Greywacke, dark grey-green, well sheared and talcy.								
202.00 -- 210.00	Impure quartzite, <del>dark</del> grained, dark grey-green								
210.00 -- 245.00	Argillite with narrow bands of greywacke, fairly well sheared and slightly silicified. A little pyrite and pyrrhotite in streaks. Some mica present.								
245.00 -- 260.50	Greywacke, dark green, talcy, fairly well sheared at 45 deg.								
260.50 -- 267.00	Greywacke, dark grey.								

NORTHERN MINER FORM 505 REV./54

DRILLED BY \_\_\_\_\_ SIGNED \_\_\_\_\_

# DIAMOND DRILL RECORD

PROPERTY FEDERAL - BALDWIN HOLE No. 11  
 SHEET NUMBER 2 SECTION FROM \_\_\_\_\_ TO \_\_\_\_\_ STARTED \_\_\_\_\_  
 LATITUDE \_\_\_\_\_ DATUM \_\_\_\_\_ COMPLETED \_\_\_\_\_  
 DEPARTURE \_\_\_\_\_ BEARING \_\_\_\_\_ ULTIMATE DEPTH \_\_\_\_\_  
 ELEVATION \_\_\_\_\_ DIP \_\_\_\_\_ PROPOSED DEPTH \_\_\_\_\_

DEPTH FEET	FORMATION	SAMPLE NO.	FROM	TO	WIDTH	ASSAY VALUES				
267.00--	295.4--									
	Coarse, pebbly quartzite, slightly sheared and sericitized, some pyrrhotite on slips. At 291.2-1-1/2 blue quartz stringer with streak of chalcopyrite in center. Schist at 20 deg. to core.									
295.40--	364.00-									
	ZONE of silicification and mineralization Dense, blue-grey, highly silicified; an occasional grey to white quartz injection; chalcopyrite fairly well distributed throughout but containing exceptionally well mineralized sections down to 353.0.									
364.00--	375.00-									
	sheared and slightly dragfolded rock; 30 % blue silicified; occasional short sections and streaks of chalcopyrite. Probably interbedded greywacke and quartzite.									
375.00--	388.00-									
	Interbedded argillite, pebbly quartzite and greywacke; occasional blue, highly silicified sections; some fine pyrite and chalcopyrite.									
388.00--	403.00-									
	Pebble quartzite, blue-grey; a fair number of blue-grey, silicified bands with chalcopyrite in places down to 396.5 ft.									
403.00--	421.50-									
	Grey green schist, 30 - 50 deg. to core, interlaced with blue-grey, silicified bands. An occasional speck of chalcopyrite.									
421.50--	434.00-									
	Grey-green argillite or greywacke, well sheared, slightly talcy. A little pyrite and chalcopyrite on slips.									
434.00--	437.00-									
	quartzite, slightly pebbly, slightly sheared.									
END OF HOLE.										

NORTHERN MINER FORM 905 REV. 1964

DRILLED BY Inspiration Diamond Drilling Co.

SIGNED \_\_\_\_\_

*W.P. Murdoch*  
W.P. Murdoch

# DIAMOND DRILL RECORD DUPLICATE COPY POOR QUALITY ORIGINAL TO FOLLOW

PROPERTY FEDERAL - BALDWIN

12

SHEET NUMBER 1 SECTION FROM  
100 ft. north of Baseline A

STARTED Sept. 11/56

LATITUDE and 46 ft. west of DATUM  
0.00

COMPLETED Sept. 14/56

DEPARTURE BEARING S-20 deg.-30 min.-E  
0.00-- 45 deg.

ULTIMATE DEPTH 284.00

ELEVATION 39.03 DIP 125 ft.-41 deg. 30 min.  
250 ft.-38 deg.

PROPOSED DEPTH

DEPTH FEET	FORMATION	SAMPLE NO	FROM	TO	WIDTH	ASSAY VALUES			

0.00-- 4.00 -- casing.

4.00-- 178.00-- Quartzite, medium grained, massive. At 16.5-chalcopyrite stringers 1/8 inc. 60 degrees to core.  
16.1 -19.0 - chalcopyrite stringers 60 deg. to core, some silicification.  
23.0-29.0 - well silicified, a few stringers with core containing a little chalcopyrite. At 43.5 - water seam. At 52.0 - water channel. 55.5 - 59.8 - a fair amount of blue-grey silicification with fair chalcopyrite. Fairly well sheared and containing blue quartz stringers. 72.5 - 111.5 - slightly altered, slightly sheared. An occasional blue quartz stringer and some chalcopyrite.  
106. - 115.5 - alteration more intense (medium grey) 2 blue quartz stringers up to 3 in.; good copper. At 143 - blue quartz stringers distributed over 1.0 ft. containing a little copper. From 161 - more dark blue, medium grained, slightly sheared, small blue grey streaks, slightly sericitized.

178.00-- 192.20 00 The start of the main zone -- Quartzite, dark blue grey, some sections of blue quartz containing good chalcopyrite mineralization.

192.20-- 236.00-- Sections of mud-grey silicification with sheared sections between. A fair distribution of chalcopyrite. In general, highly silicified. 204.0 - 206.5 - well sheared, some copper in schist. 213 - 215 -- highly sheared with good chalcopyrite min. in blue quartz streaks. Mineral good down to 214.5 - 225.5 - 224 -- Well silicified good chalco - At 232.5 -- 2 inches heavy chalcopyrite.

COPY

# DIAMOND DRILL RECORD

PROPERTY FEDERAL - BALDWIN

HOLE No. 12

SHEET NUMBER 2

SECTION FROM

**DUPLICATE COPY  
POOR QUALITY ORIGINAL  
TO FOLLOW**

STARTED

LATITUDE

DATUM

COMPLETED

DEPARTURE

BEARING

ULTIMATE DEPTH

ELEVATION

DIP

PROPOSED DEPTH

DEPTH FEET	FORMATION	SAMPLE NO.	FROM	TO	WIDTH	ASSAY VALUES			
236.00--	245.50- Quartzite, medium grained, light to dark grey with blue silicified streaks, some sections containing a fair amount of chalcopryite. at 238.4 - a fair amount of "splashy chalco".  End of Zone.								
245.50 --	284.00-- Impure quartzite, slightly sericitized, slightly mottled, fairly well sheared. A fair number of blue quartz stringers. Altered light grey to dark grey. A very little chalcopryite.  END OF HOLE								

Drilled by Inspiration Diamond Drilling Co.

Signed W. P. Murdoch P.Eng.

*COPY*









# DIAMOND DRILL RECORD

PROPERTY FEDERAL - BALDWIN

HOLE No.

SHEET NUMBER 2

SECTION FEED

DUPLICATE COPY

VARIED

13

LATITUDE

DATUM

POOR QUALITY ORIGINAL

COMPLETED

DEPARTURE

BEARING

TO FOLLOW

ULTIMATE DEPTH

ELEVATION

DIP

PROPOSED DEPTH

DEPTH FEET	FORMATION	SAMPLE NO	FROM	TO	WIDTH	ASSAY VALUES			
485.00	506.00								
						Quartzite ? - slightly banded, light grey to slightly pistachio green. A fair number of small blue quartz stringers. At 501 - a 4 in. quartz stringer with chalco.			
506.00	524.00								
524.00	554.00					Quartzite, medium to coarse grained; an occasional quartz stringer. Light grey alteration, numerous blue quartz stringers and sections, the rock is sheared and sericitized. 535 - 538 -- 60% blue silicified 530 - 533.9 -- fair chalco.			
554.00	578.00								
578.00	618.00					Bluish, highly silicified; fair distribution of chalcopyrite. Quartzite.			

Drilled by Inspiration Diamond Drilling Co.

Signed: W. P. Murdoch

*copy*

# DIAMOND DRILL RECORD

PROPERTY..... FEDERAL - BALDWIN..... HOLE No. .... 13.....  
 SHEET NUMBER..... 1..... SECTION FROM..... TO..... STARTED Sept.19/56.....  
                   506 ft. south of baseline A.....  
 LATITUDE..... DATUM..... COMPLETED Sept.24/56.....  
                   and 398 ft. west of 0.00.....  
 DEPARTURE..... BEARING N- 21 deg.-30 min.-West..... ULTIMATE DEPTH 618 ft.....  
                   24.17 ft. collar-55 deg. 375 ft.-39 deg.  
 ELEVATION..... DIP 75 ft.-52 deg. 525 ft.-32 deg. PROPOSED DEPTH.....  
   225 ft.-43 deg. 610 ft.-28 deg.

DEPTH FEET	FORMATION	SAMPLE NO.	FROM	TO	WIDTH	ASSAY VALUES			
0.00-- 51.00	Casing								
51.00-- 120.00	Black to grey argillite, highly sheared and talcose. 54-55 Blueish-white quartz., a little pyrite in shear planes. Schist at 75 deg. to core. 95-96.8-blue-grey quartz at 45 deg. to core, one to two feet of schist on walls. From 100- 111-- numerous grey, silicified streaks, a little pyrite and pyrrhotite. 111-12--								
111.00-- 120.00	Greywacke, in general, fairly well sheared and talcy.								
120.00-- 150.00	Transitional, argillite to greywacke, fairly well sheared and talcy.								
150.00-- 185.50	Mainly greywacke with a few gradational argillite-greywacke sections. fairly well sheared and talcy.								
185.50-- 225.00	Argillaceous greywacke to argillite. An occasional band of greywacke, all fairly well sheared at 60 to 70 deg. 205-207.5-- slightly silicified with an occasional quartz stringer a little chalco and pyrite.								
225.00-- 377.50	Greywacke, grey, fairly well sheared at 50 deg to core, slightly talcose, all quite fine grained and argillaceous. 307.5-310- two small quartz stringers containing a little chalco. 343-355-- medium grained, slightly silicified, an occasional quartz stringer containing a little chalco. 375-377.5-- slightly graphitic, some fine chalco. in streaks and disseminated.								
377.5-- 452.00	Pebbly quartzite and conglomerate. 430.5-436-- slightly sheared with light mud colored alteration. and an occasional small blue quartz stringer. At 458- one 1 in. blue quartz stringer with a little chalco.								
452.00-- 485.00	Quartzite, medium grained.								

# DIAMOND DRILL RECORD

PROPERTY FEDERAL - BALDWIN HOLE No. 13  
 SHEET NUMBER 2 SECTION FROM \_\_\_\_\_ TO \_\_\_\_\_ STARTED \_\_\_\_\_  
 LATITUDE \_\_\_\_\_ DATUM \_\_\_\_\_ COMPLETED \_\_\_\_\_  
 DEPARTURE \_\_\_\_\_ BEARING \_\_\_\_\_ ULTIMATE DEPTH \_\_\_\_\_  
 ELEVATION \_\_\_\_\_ DIP \_\_\_\_\_ PROPOSED DEPTH \_\_\_\_\_

DEPTH FEET	FORMATION	SAMPLE NO.	FROM	TO	WIDTH	ASSAY VALUES			
485.00-- 506.00--	Quartzite ?- slightly banded, light grey to slightly pistachio green. a fair number of small blue quartz stringers. At 501- a 4 in. quartz stringer, with chalco.								
506.00-- 524.00--	Quartzite, medium to coarse grained; an occasional quartz stringer.								
524.00-- 554.00--	Light grey alteration, numerous blue quartz stringers and sections, the rock is sheared and sericitized. 535-538--60% blue silicified 530-533, 9-- fair chalco.								
554.00-- 578.00--	bluish, highly silicified; a fair distribution of chalcopryite.								
578.00-- 618.00--	Quartzite.								

NORTHERN MINER FORM 908 REV./84

DRILLED BY Inspiration Diamond Drilling Co. SIGNED W.P. Murdoch.

(510 Main) DIAMOND DRILL RECORD

PROPERTY

Bitter Township, Ontario

HOLE No.

13

SHEET NUMBER

1

SECTION FROM

TO

STARTED

Sept 19/56

LATITUDE

Plain No.

DATUM

COMPLETED

Sept 24/56

DEPARTURE

S-89405'

BEARING

N-21°-30'-W

ULTIMATE DEPTH

618'

ELEVATION

26.59

PROPOSED DEPTH

Collar - 55' dia, at 75°-39', 525'-425', at 375'-39', 525'-325'

DEPTH FEET	FORMATION	SAMPLE NO.	FROM	TO	WIDTH	ASSAY VALUES			
0.00 - 51.0	Casing								
51.0 - 120.0	Black and grey arg. H.L., highly sheared, foliated, 54-55 - blue-white quartz, a little pyrite on shear planes								
	(SCHIST & NEAR SICLE FROM 1-2 feet AT 45° TO 50°)								
	(FROM 100-111.0 - numerous grey silicified streaks a little pyrite & pyroxene (IMMEDIATE QUARTZITE, MED. GRAINED))								
	From 102-111.0 - numerous grey silicified streaks - a little pyrite and pyroxene (impure quartzite, medium grained)								
	111.0-120.0 - grey arg. H.L., highly well sheared and foliated								
120.0 - 150.0	transitional arg. H.L. to black arg. H.L., well sheared and foliated								

NORTHERN MINER FORM 905 REV 1964 MORE GREY TO BLACK WELL SHEARED AT 65' + ?

SIGNED

W. B. ...

# DIAMOND DRILL RECORD

PROPERTY Baldwin Township HOLE No. 18  
Claim No. 5-89405  
 SHEET NUMBER 2 SECTION FROM \_\_\_\_\_ TO \_\_\_\_\_ STARTED \_\_\_\_\_  
 LATITUDE \_\_\_\_\_ DATUM \_\_\_\_\_ COMPLETED \_\_\_\_\_  
 DEPARTURE \_\_\_\_\_ BEARING \_\_\_\_\_ ULTIMATE DEPTH \_\_\_\_\_  
 ELEVATION \_\_\_\_\_ DIP \_\_\_\_\_ PROPOSED DEPTH \_\_\_\_\_

DEPTH FEET	FORMATION	SAMPLE NO.	FROM	TO	WIDTH	ASSAY VALUES			
150.0 - 185.5	Thinly graywacke, with a few gradationally argill. graywacke sections; fairly well sheared and to base.								
185.0 - 225.0	Argillaceous graywacke to argillite, an occasional good band of graywacke; all fairly well sheared at 70° to 60°.								
208.0 - 207.5	Slightly s.p.c. bed with an occasional quartz stringer with some chalc. pyrite.								
225 - 277.5	Graywacke - gray; fairly well sheared at 50 deg. to cone slightly to base, all quite fine grained and argillaceous.								
277.5 - 310	Two small quartz stringers - a little chalc.								
310 - 355	Thinly bedded, argill. s.p.c. bed with a little quartz stringer, chalc., an occasional quartz stringer.								

NORTHERN MINER FORM 908 REV./84

DRILLED BY \_\_\_\_\_

SIGNED \_\_\_\_\_

*J. W. Marshall*

# DIAMOND DRILL RECORD

PROPERTY Baldwin, James L. Co. HOLE No. 19  
Claim No. - 5-89405  
 SHEET NUMBER 3 SECTION FROM \_\_\_\_\_ TO \_\_\_\_\_ STARTED \_\_\_\_\_  
 LATITUDE \_\_\_\_\_ DATUM \_\_\_\_\_ COMPLETED \_\_\_\_\_  
 DEPARTURE \_\_\_\_\_ BEARING \_\_\_\_\_ ULTIMATE DEPTH \_\_\_\_\_  
 ELEVATION \_\_\_\_\_ DIP \_\_\_\_\_ PROPOSED DEPTH \_\_\_\_\_

DEPTH FEET	FORMATION	SAMPLE NO.	FROM	TO	WIDTH	ASSAY VALUES		
225 - 377.5	(contin.)							
	375-377.5 - v. light gray to white granular disintegrates							
377.5 - 452.0	Conglomerate (pebbly quartzite)							
	430.5-436 - v. light to medium light, usual colored alteration, and on occasion small quartz stringers; at 458 - 1/2" blue quartz stringer w. shales							
(452.0 - 485.0)								
452.0 - 485.6	Quartzite, medium to fine grained							
485.0 - 506.0	Quartzite, slightly banded - 1.5 ft. gray to light gray, pistachio green alteration; a few small blue quartz stringers; at 501 - 4" quartz stringer + sh.							
506.0 - 524	Quartzite, medium to coarse grained, occasional quartz stringer							

NORTHERN MINER FORM 808 REV. 7/64

DRILLED BY \_\_\_\_\_

SIGNED \_\_\_\_\_

*M. M. Muddal*

# DIAMOND DRILL RECORD

PROPERTY Baldwin Township HOLE No. 13  
Claim S-89405  
 SHEET NUMBER 4 SECTION FROM \_\_\_\_\_ TO \_\_\_\_\_ STARTED \_\_\_\_\_  
 LATITUDE \_\_\_\_\_ DATUM \_\_\_\_\_ COMPLETED \_\_\_\_\_  
 DEPARTURE \_\_\_\_\_ BEARING \_\_\_\_\_ ULTIMATE DEPTH \_\_\_\_\_  
 ELEVATION \_\_\_\_\_ DIP \_\_\_\_\_ PROPOSED DEPTH \_\_\_\_\_

DEPTH FEET	FORMATION (ZONE OF SILICIFICATION)	SAMPLE NO.	FROM	TO	WIDTH	ASSAY VALUES		
<u>524 - 534</u>	<u>MINERALIZATION</u>							
	<u>(ZONE OF SILICIFICATION)</u>							
	<u>MINERALIZATION</u>							
	<u>light grey alteration - numerous blue quartz streaks and sections rock checked and sericitic.</u>							
	<u>535 - 538 - 60% blue silicified</u>							
	<u>530 - 533.9 - fair chalcophite</u>							
	<u>ZONE CONTINUED.</u>							
<u>534 - 578</u>	<u>Dark - highly silicified - a good distribution of chalcophite</u>							
<u>578 - 618</u>	<u>Quartzitic</u>							

NORTHERN MINER FORM 505 REV. 7/54

DRILLED BY

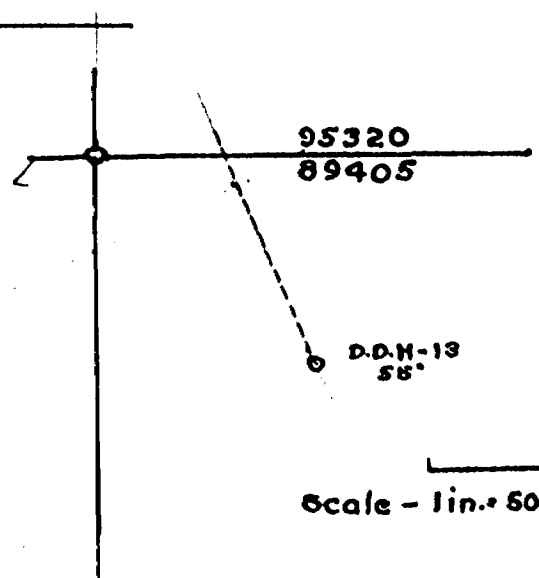
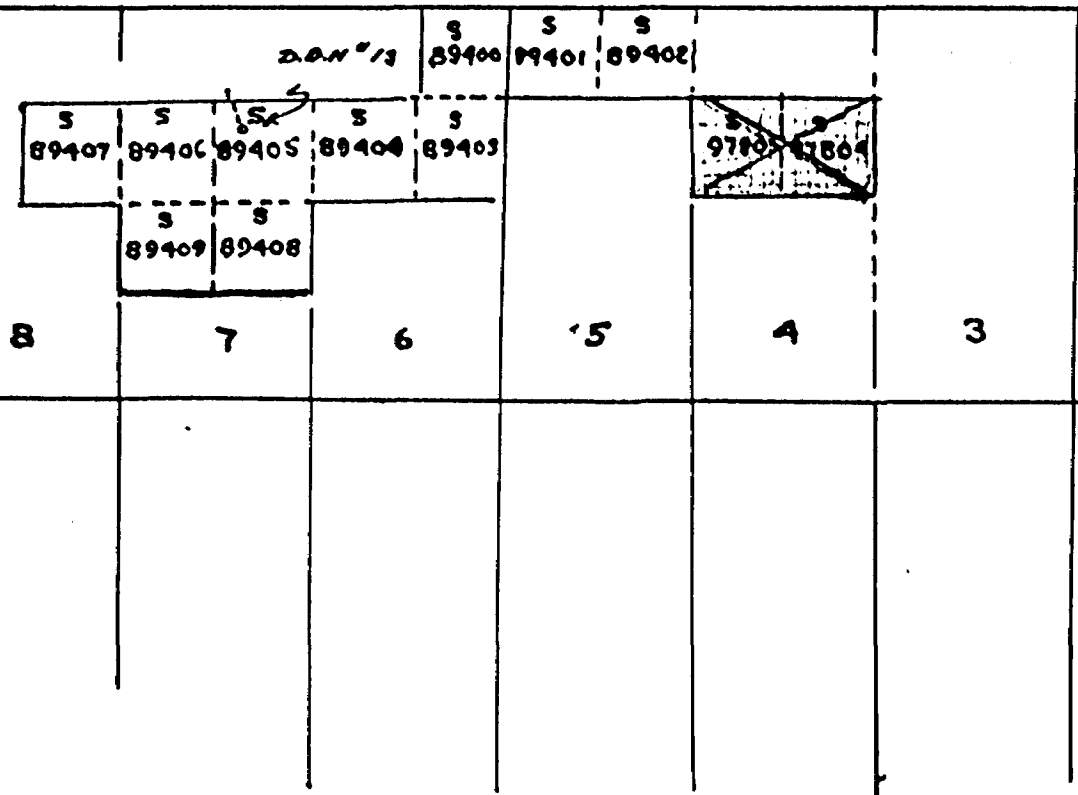
Inspiration D. Dilling

SIGNED

W.D. Marshall

PORTER  
BALDWIN

VI.



Scale - 1 in. = 500 FT.

RECORDING OF WORK  
ON CLAIMS  
No: S - 8 - 89400 TO S - 89409 - Includ.  
and.  
~~S. 89404 to S. 89406~~  
- 1956 -



# DIAMOND DRILL RECORD

PROPERTY FEDERAL - BALDWIN

HOLE No. 14

SHEET NUMBER 1 SECTION FROM 533 ft. south of Baseline A TO

STARTED sept 25/56

LATITUDE and 58 ft. west of 0.00 DATUM

COMPLETED Oct. 3/56

DEPARTURE BEARING N- 21 deg.-30-W

ULTIMATE DEPTH 805 ft.

ELEVATION 33.45

collar-60 deg.; 375 ft.-50 deg.  
 75 ft.-53 deg.; 525 ft.-40 deg.  
 225 ft.-52 deg.; 675 ft.-36 deg.  
 775 ft.-35 deg.

PROPOSED DEPTH

DEPTH FEET	FORMATION	SAMPLE NO.	ASSAY VALUES		
			FROM	TO	WIDTH
0.00-- 5.00--	Casing				
5.00-- 257.00--	Schist, argillaceous, talcy; dark grey - green. 75 to 80 deg. to core. at 94- a few quartz stringers, schist 60 deg. to core, 112-116--slightly crumpled, a few quartz stringers and blue quartz eyes ( pebbly quartzite )				
257.00-- 327.50--	Greywacke and argillaceous greywacke, mainly grey, fine grained and fairly well sheared; some sections fairly well silicified ( blue-grey ) an occasional small quartz fracture and a little sulphide. An occasional sheared talcy section. Schist 60 deg. to core.				
327.50-- 347.50--	Greywacke-light to dark grey, coarse to medium to fine grained, massive. an occasional quartz gash with a little chalc. Fairly sericitic in places.				
347.50-- 500.00--	Greywacke, argillaceous, well sheared at 70 deg. and fairly talcose. An occasional small quartz stringer. Very little mineral. Sheared at 40 to 50 deg. 473.00--479.00-- slightly crumpled, a little quartz. 446-450- a number of narrow quartz stringers. In vicinity of 565- a little graphite on slips.				
500.00-- 519.00--	Greywacke, fine grained, light grey, fairly well sheared and talcy.				
519.00-- 534.00--	Greywacke, grey, medium grained, slightly sericitic. 529-531.5- quartz, white to blue.				
534.00-- 568.00--	Greywacke (dark to light grey), medium grained, slightly sheared.				
568.00-- 622.50--	Greywacke, medium to fine grained, fairly well sheared at 50 deg.				
622.50-- 627.00--	Quartz, white to blue. 625-627- a fair amount of " splashy " chalc.				
627.00-- 636.00--	Pebble quartzite, slightly sericitic, a little chalc.				
636.00-- 643.00--	quartzite, fairly well sheared and sericitic, a little chalc.				

NORTHERN MINER FORM 808 REV. 1/54

DRILLED BY \_\_\_\_\_

SIGNED \_\_\_\_\_

# DIAMOND DRILL RECORD

PROPERTY ..... HOLE No. **14**  
 SHEET NUMBER **2** SECTION FROM ..... TO ..... STARTED .....  
 LATITUDE ..... DATUM ..... COMPLETED .....  
 DEPARTURE ..... BEARING ..... ULTIMATE DEPTH .....  
 ELEVATION ..... DIP ..... PROPOSED DEPTH .....

DEPTH FEET	FORMATION	SAMPLE NO.	FROM	TO	WIDTH	ASSAY VALUES			
347.5 - 500.0	Greywacke - argillaceous; well sheared at 70° and fairly talcose; an occasional small quartz stringer; very little mineral; schist at 40-50 deg. 473-479 - slightly crumpled; a little quartz. 446-450 - a number of narrow quartz stringers; in vicinity of 565 - a little graphite on slips;								
500.0 - 519.0	Greywacke, fine grained, light-grey; fairly well sheared and talcy								
519.0 - 534.0	Greywacke - grey, medium grained, slightly sericitic. 529-531.5 - quartz - white to blue								
534.0 - 568.0	Greywacke - <sup>LIGHT TO DARK GREY</sup> (light to dark grey) medium grained, slightly sheared.								
568.0 - 622.5	Greywacke - medium to fine grained; fairly well sheared at 50 deg.								
622.5 - 627.0	Quartz - white to blue - 625-627 - a fair amount of "splashy" chalco								

NORTHERN MINER FORM 805 REV. 1964

DRILLED BY \_\_\_\_\_

SIGNED \_\_\_\_\_

*W. M. Maudslayi*



# DIAMOND DRILL RECORD

PROPERTY **FEDERAL - BALDWIN**

HOLE No. **15**

SHEET NUMBER **2** SECTION FROM **TO**  
**175 ft. south of baseline A**

STARTED **Oct. 4/56.**

LATITUDE **and 86 ft. East of 0.00**

COMPLETED **Oct. 6/56.**

DEPARTURE **BEARING N- 23 deg.-W**  
**collar-45 deg.**

ULTIMATE DEPTH **214 ft.**

ELEVATION **72.78 ft.** DIP **75 ft.40 deg.**  
**150 ft.39 deg.**

PROPOSED DEPTH

DEPTH FEET	FORMATION	SAMPLE NO	IRON	TO	WIDTH	ASSAY VALUES		
0.00-- 12.00--	casing							
12.00-- 13.00--	white, highly silicified (boulder ?)							
13.00-- 45.50--	conglomerate, an occasional boulder, NUMerous small quartz pebbles.							
45.50-- 84.70--	conglomerate, groundmass more fine grained than above, an occasional pebble. 73.5-74.5--oxidized water seam.							
84.70-- 131.30--	Greywacke, dense, dark grey-green							
131.30-- 136.00--	Grey, altered, slightly speckled, greywacke ?; numerous dark blue quartz stringers; some chalcopryite.							
136.00-- 139.20--	Dark blue-grey, fairly well silicified quartzite ? some chalco.							
139.20-- 188.50--	Dark blue-grey, highly silicified quartzitic rock. Excellent chalcopryite to 155. 155-170-copper very finely disseminated, occasionally in streaks. 170-186-15- good copper mineralisation with a few short sections very good.							
188.50-- 194.00--	light grey altered and silicified quartzite schist. Numerous blue quartz stringers. 60 % silicified, some copper.							
194.00-- 214.00--	Quartzite, grey, medium grained. 97-97.5- few quartz stringers, some silicification and a little chalco. 197.5-214-an occasional quartz stringer with a trace of chalco.							
END OF HOLE								

*W.P. Murdoch*

# DIAMOND DRILL RECORD

PROPERTY **FEDERAL - BALDWIN**

HOLE No. **16**

SHEET NUMBER **1** SECTION FROM **TO**  
**88 ft. north of baseline A**

STARTED **Oct. 10/56**

LATITUDE **and 238 ft. west of 0.00** DATUM  
**0.00**

COMPLETED **Oct. 12/56**

DEPARTURE BEARING **S- 20 deg.-E**  
**collar-45 deg.**

ULTIMATE DEPTH **238 ft.**

ELEVATION **50.17 ft.** DIP **100 ft.-40 deg.**  
**200 ft.-50 deg.**

PROPOSED DEPTH

DEPTH FEET	FORMATION	SAMPLE NO	FROM	TO	WIDTH	ASSAY VALUES			
0.00-- 5.00	casing								
5.00-- 5.50	quartz, leached, some chalco.								
5.50-- 161.00	quartzite, medium to coarse grained. 9.0- 12.0- quartz, some splashy chalco. At 12.8- 1 inch quartz stringer with some chalco. 98.3-99.5--60 % blue quartz. 102-105- well sheared at 60 deg. 108-113- some silicification with quartz stringers and some chalcopryite.								
161.00-- 163.00	silicified schist with quartz stringers. A little chalco.								
163.00-- 168.00	70 % highly silicified. A fair amount of chalcopryite.								
168.00-- 188.00	Dark grey-green schist with finely disseminated chalco.								
178.00-- 191.00	Quartzite, coarse to medium grained.								
191.00-- 238.00	Quartzite, medium to coarse grained, fairly well silicified ( brownish) At 203.5 a splash of chalco.								
END OF HOLE									

*W.P. Murdoch*

# DIAMOND DRILL RECORD

PROPERTY FEDERAL - BALDWIN

HOLE No. 17

SHEET NUMBER 1

SECTION FROM TO

STARTED Oct.16 /56

190 ft. north of baseline A

LATITUDE and 214 ft. west of 0.00

DATUM

COMPLETED Oct.22 / 56

DEPARTURE 19.79 ft.

BEARING S- 20 deg.-E

ULTIMATE DEPTH 405 ft.

ELEVATION

collar- 45 deg.; 225 ft.-28 deg.

DIP 75 ft.-41 deg.; 300 ft.-25 deg.

150 ft.-34.30 ; 400 ft.-21 deg.

DEPTH FEET	FORMATION	SAMP. L NO	FROM	TO	WIDTH	ASSAY VALUES		
0.00-- 44.00--	casing							
44.00-- 46.00--	Argillaceous greywacke, well sheared at 30 deg, sericitic, quite blocky some wavy.							
46.00-- 85.00--	Argillaceous greywacke, well sheared and sericitized, some sections talc 52-53.2- quartz. 82-85-few narrow stringers up to 1/8 inches CARRYING CHALCO.							
85.00-- 256.00--	Quartzite, medium to coarse grained. At 127- a large splash of chalco. From 123-186-slight shear becoming noticeable with some alteration. From 248- 256-- a number of blue quartz stringers in slightly altered rock							
256.00-- 276.00--	Quartzite, medium, well altered, slightly sheared and fractured. A few small blue quartz stringers.							
276.00-- 303.60--	Pebby quartzite, slightly sheared and altered. From 298--fairly well sheared, numerous quartz stringers, some blue silicification							
303.60-- 305.40--	Start of Zone--Schist, well silicified and containing quartz stringers with traces of chalco.							
305.40-- 313.30--	Bluish, highly silicified ( not complete) good chalco. 313-313.3-- well sheared.							
313.30-- 318.00--	Quartzite, fine grained, slightly silicified. A few gashes containing chalcopryite.							
318.00-- 323.00--	fairly well sheared and altered; fair chalco-321-322.5							
323.00-- 328.00--	Pebby quartzite, brownish, highly silicified.							
328.00-- 337.00--	Highly silicified, blue-grey, fair chalco.							
337.00-- 356.00--	brownish-grey, well silicified, a little chalco.							
356.00-- 383.00--	Quartzite, medium grained.							

NORTHERN MINER FORM 808 RE. /54

DRILLED BY \_\_\_\_\_

SIGNED \_\_\_\_\_



# DIAMOND DRILL RECORD

3-20

PROPERTY	FEDERAL - BALDWIN	HOLE No.	18
SHEET NUMBER	1	SECTION FROM	TO
	103 ft. north of baseline A		
LATITUDE	and 389. ft. west of	DATUM	
		BEARING	S-20 deg.-E
DEPARTURE			collar 30 deg.
ELEVATION	36.0 ft.	DIP	100 ft.- 14 deg.
		STARTED	Oct. 22nd. 1956.
		COMPLETED	Oct. 26th. 1956
		ULTIMATE DEPTH	175 ft.
		PROPOSED DEPTH	

DEPTH FEET	FORMATION	SAMPLE NO	FROM	TO	WIDTH	ASSAY VALUES		
0.00-- 3.50	casing							
3.50-- 5.50	Quartzite, medium grained, fairly well sheared.							
5.50-- 45.50	Quartzite, medium grained. At 15.5-- quartz stringer at 60 deg. with some pyrite; same at 22.0.							
45.50-- 81.00	Quartzite, light grey, fine grained. A few short sections slightly sheared and altered.							
81.00-- 109.80	Quartzite, medium grained, an occasional blue quartz stringer.							
109.80-- 117.50	Quartzite, with blue quartz stringers and some sections bluish-silicified short sections of blueish silicified and well mineralized with chalco and pyrite.							
117.50-- 133.00	Quartzite, medium grained, an occasional section having 50 % blue quartz with a little chalco. 124.4--125.8--fairly well mineralized.							
133.00-- 143.50	about 40 % blue quartz. An occasional section containing some chalco.							
143.50-- 144.40	schist, some silicification and chalco.							
144.40-- 164.00	schist, dark grey-green to grey, slightly talcy; occasional narrow stringers of pyrite and chalco.							
164.00-- 174.50	Quartzite, medium to fine grained.							
END OF HOLE								

*W.P. Murdoch*



# DIAMOND DRILL RECORD

PROPERTY FEDERAL - BALDWIN

HOLE No. 19

SHEET NUMBER 1 SECTION FROM TO  
195 ft south of baseline A

STARTED Oct.21 /56

LATITUDE and 291 ft. east of 0.00

COMPLETED Oct.25 /56

DEPARTURE 57 ft. BEARING N-20 deg.-W  
collar--45 deg.

ULTIMATE DEPTH 227 ft.

ELEVATION 100 ft.--38 deg.  
200 ft.--36 deg.

PROPOSED DEPTH

DEPTH FEET	FORMATION	SAMP. L NO	FROM	TO	WIDTH	ASSAY VALUES		
0.00--6.00	Casing							
6.00--28.50	Quartzite, medium grained, massive.							
28.50--32.50	Quartzite, grey, highly silicified, containing small white fragments.							
32.50--46.00	Quartzite, pebbly, dark grey-green, fairly well silicified.							
46.00--105.00	Conglomerate, an occasional large pebble and boulder.							
105.00--106.50	START OF ZONE--70 % blue-silicified.							
106.50--115.00	Blue, highly silicified, very little mineral.							
115.00--137.00	Numerous small blue quartz stringers in a grey groundmass--a little chalcopryite.							
137.00--140.00	Bluish, highly silicified, Fair chalco.							
140.00--176.50	Numerous small, blue quartz stringers with an occasional silicified section containing some copper.							
176.50--179.00	Highly silicified, white to grey, poorly mineralized.							
179.00--187.00	Dark grey-green, fairly well silicified, fair pyrite and chalcopryite in sections.							
187.00--189.20	Dark grey-green quartzite. A fair number of blue quartz stringers.							
189.20--237.00	Quartzite, medium grained. An occasional blue quartz stringer.							
END OF HOLE								

NORTHERN MINER FORM 805 REV/54

INSPIRATION DIAMOND DRILLING CO.

W.P. Murdoch.

DRILLED BY

SIGNED

# DIAMOND DRILL RECORD

PROPERTY **FEDERAL - BALDWIN** HOLE No. **20**  
 SHEET NUMBER **1** SECTION FROM **TO** STARTED **Oct. 27 /56**  
**243 ft. north of baseline A**  
 LATITUDE **and 584 ft. west of 0.00** DATUM COMPLETED **Nov. 2 /56**  
 DEPARTURE BEARING **S- 20 deg.-E** ULTIMATE DEPTH **482 ft.**  
**collar--55 deg.; 300 ft. 35-00**  
 ELEVATION **21.87** DIP **100 ft.--53-30 400 ft.--27-00** PROPOSED DEPTH  
**200 ft.--45-00**

DEPTH FEET	FORMATION	SAMPLE NO.	FROM	TO	WIDTH	ASSAY VALUES		
0.00-- 52.00--	Casing							
52.00-- 155.00--	Dark grey-green argillaceous greywacke, well sheared at 30 to 40 deg. ar. and fairly talcose--56-57--brownish-white quartz. 134.4-138.0--2 ft. white quartz, some pyrrhotite, the remainder, highly sgeared and dragfolded with some blue quartz and pyrrhot.							
155.00-- 168.00--	NEW ZONE ?--155-157--a few blue quartz stringers with some chalco. 157-159.2--80 % blue to white quartz with some chalco and pyrrhotite, 159.2-161.5--schist with a few white quartz stringers some chalco and pyrrhotite, 161.5-167-90 % white quartz. little mi.							
168.00-- 194.00--	Argillaceous greywacke, well sheared and talcy.							
194.00-- 213.50--	The same as above bur more light grey. An occasional narrow streak of pyrrhotite.							
213.50-- 310.00--	Quartzite, medium grained. At 233- 4 in. quartz stringer. At 256- a 2 in. quartz stringer with a little chalco. 268-270-- a number of small black fractures and some alteration. At 303--1 in. blue qua quartz some pyrrhotite, 307.5-309.5--blue, glassy quartz, a little pyrite. 337.8-343.3--quartz, slightly bluish, glassy. 407.0-410.0--fairly well sheared; a number of small, blue quartz stringers.							
410.00-- 446.50--	MAIN ZONE--410-421--bluish, highly silicified, a little schist, well mineralized with chalco--a little pyrrhotite.							
421.00-- 429.00--	Light blue to grey, fairly well sheared, and silicified. Fair chalco down to 425. 429.00--438.3--blue grey, fairly well silicified and shear numerous small quartz stringers; some chalco. 438.3-446.5--blue, highly silicified. Fair chalco to 443.8							
446.50-- 482.00--	Quartzite, medium grained, slightly sheared to 456.							
END OF HOLE.								

NORTHERN MINER FORM 809 REV /54

INSPIRATION DIAMOND DRILLING CO.

W.P. Murdoch.

DRILLED BY

SIGNED

# DIAMOND DRILL RECORD

DUPLICATE COPY  
POOR QUALITY ORIGINAL  
TO FOLLOW

PROPERTY FEDERAL - BALDWIN

LOG No. 21

SHEET NUMBER 1

SECTION FROM

STARTED October 28/56

LATITUDE 126 ft. north of baseline A  
and 975 ft. west of 0.00

COMPLETED NOV. 2/56

DEPARTURE

BEARING S-20 deg./E

ULTIMATE DEPTH 228.00

ELEVATION 16.71

collar-- 45 deg.  
100 ft. -- 42-45 deg.  
200 ft. -- 41-00 deg.

PROPOSED DEPTH

DEPTH FEET	FORMATION	SAMPLE NO	FROM	TO	WIDTH	ASSAY VALUES			

0.00--	53.00	-- Casing								
53.00	151.50	dark grey-green schist (argillaceous greywacke) some sections quite talcy. Schist 30-34 deg. to core. 93.8 - 94.0 - 4 in. white quartz. 116 - 118 -- lost core; 148 - 151.5 -- an occasional streak of chalcopryrite and pyrrhotite.								
151.50	187.80	Zone of silicification and mineralization. - 151.5 - 154.0 - Blue-grey silicified grewacke? with numerous small blue quartz stringers and a little chalcopryrite. 154 - 165 - bluish grey, very highly silicified a fair amount of chalcopryrite. 165 - 169 - quartzite, medium grained, slightly silicified, no mineral. 169 - 171.5 - quartzite, well silicified, no mineral. 171.5 - 190.5 - quartzite, fairly well silicified - an occasional quartz stringer with some chalco. 185.8 - 187.8 - blue, silicified, some heavy chalco.								
181.78	222.00	Quartzite, fairly well silicified in short sections and an occasional white or blue quartz stringer. 192 - 197 - a little chalco in stringer.								
222.00	228.00	Quartzite, an occasional quartz stringer.								

END OF HOLE.

Drilled by: INSPIRATION DIAMOND DRILLING CO.

Signed: W. P. Murdoch.

*copy*



# DIAMOND ~~DUPLICATE COPY~~

POOR QUALITY ORIGINAL 22

TO FOLLOW

PROPERTY FEDERAL - BALDWIN

SHEET NUMBER 1

SECTION FROM

STARTED November 1/56

LATITUDE 134 ft. north of baseline A  
and 1125 ft. west of 0.00

COMPLETED November 18/56

DEPARTURE

BEARING 8-20 deg. -E  
collar - 50 deg.; 200 ft.-45 deg.

ULTIMATE DEPTH 311 ft.

ELEVATION 22.95 ft.

DIP 100 ft. - 48 deg.

PROPOSED DEPTH

DEPTH FEET	FORMATION	SAMPLE NO.	FROM	TO	WIDTH	ASSAY VALUES			
0.00 - 61.00	Casing								
61.00 - 64.50	Coarse Cabbro, boulders?								
64.50 - 188.00	Greywacke, sheared 35 to 45 deg. to core, some impure quartzite. 171.0 - 171.6 - bluish, white quartz.								
188.00 - 200.80	ZONE - Greywacke, highly sheared, slightly chloritic, slightly altered, an occasional quartz stringer with a little chalcoppyrite. 184 - 186 - quite chloritic.								
200.80 - 226.50	ZONE - Mineralized sericitic schist with quartz stringers and fair chalcoppyrite. Fair silicification in places. 201.5 - 263.5 - 60% quartz - good chalco mineralization.								
226.5 - 259.50	Silicified pebbly quartzite or conglomerate, fairly well sericitized and containing a number of quartz stringers with some chalco. From 254-259.5 - highly silicificied, some mineral. 258.5 - 259.6 - quartz with considerable chalco.								
259.50 - 311.00	Quartzite, medium to coarse grained, some fairly well sheared and altered. An occasional small quartz gash.								

END OF HOLE

Drilled by: INSPIRATION DIAMOND DRILLING CO.

Sgd. W. P. Murdoch.

COPY



# DIAMOND DRILL RECORD DUPLICATE COPY

**POOR QUALITY ORIGINAL  
TO FOLLOW**

PROPERTY FEDERAL - BALDWIN

HOLE No. 23

SHEET NUMBER 1

SECTION FROM

STARTED NOV. 5/56

LATITUDE 87 ft. north of baseline A

COMPLETED NOV. 7/56

and 583 ft. west of 0.00

DEPARTURE

BEARING S-20 deg. -E

ULTIMATE DEPTH

collar -- 45 deg.

ELEVATION 50.0 ft.

DIP 80 ft. -- 35 deg.

PROPOSED DEPTH

DEPTH FEET	FORMATION	SAMPLE NO	FROM	TO	WIDTH	ASSAY VALUES		
0.00 - 22.00	Casing							
22.00 - 103.00	Quartzite, medium grained. At 63.5 - 2 1/2 inches of blue quartz with a little pyrite. At 64.5 - 1/2 in. blue quartz. 89 - 60 fairly schistose, slightly altered. 96-103 - well sheared and altered, an occasional blue quartz stringer.							
103.00 - 128.00	MAIN ZONE - 103.0 - 114.5 - bluish, highly silicified; from 106.5 to 114.5 - very good chalco mineralization. 114.5 - 118.5 - quartzite, well silicified, a little chalcopryrite. 118.5 - 121.2 - quartzite, well silicified, a fair amount of chalcopryrite but distribution erratic. 121.2 - 128.0 - Greywacke, well sheared a few small streaks of chalcopryrite.							
128.00 - 140.90	Greywacke well sheared, a few small streaks of chalcopryrite.							
140.90 - 158.00	Quartzite, coarse grained.							

Drilled by: INSPIRATION DIAMOND DRILLING CO.

Sgd.

W. P. Murdoch

*COPY*

# DIAMOND DRILL RECORD

PROPERTY FEDERAL - BALDWIN HOLE No. 23  
 SHEET NUMBER 1 SECTION FROM \_\_\_\_\_ TO \_\_\_\_\_ STARTED NOV. 5 /56  
 LATITUDE 87 ft. north of baseline A DATUM \_\_\_\_\_ COMPLETED NOV. 7 /56  
 DEPARTURE and 583 ft. west of 0.00 BEARING \_\_\_\_\_ ULTIMATE DEPTH 158 ft.  
 ELEVATION 50.0 ft. DIP S- 20 deg. -E PROPOSED DEPTH \_\_\_\_\_  
collar--45 deg.  
80 ft.--35 deg.

DEPTH FEET	FORMATION	SAMPLE NO.	FROM	TO	WIDTH	ASSAY VALUES			
0.00-- 22.00--	Casing								
22.00-- 103.00--	Quartzite, medium grained. At 63.5--2-1/2 inches of blue quartz with a little pyrite. At 64.5- 1/2 in. blue quartz. 89-96-fairly schistose, slightly altered. 96-103- well sheared and altered, an occasional blue quartz stringer.								
103.00-- 128.00--	MAIN ZONE--103.0-114.5--bluish, highly silicified; from 106.5 to 114.5--very good chalco mineralization. 114.5-118.5-- quartzite, well silicified, a little chalcopryite. 118.5-- 121.2--quartzite, well silicified, a fair amount of chalcopryite but distribution erratic. 121.2-128.0--Greywacke, well sheared a few small streaks of chalcopryite.								
128.00-- 140.90--	Greywacke well sheared, a few small streaks of chalcopryite.								
140.90-- 158.00--	Quartzite, coarse grained.								
END OF HOLE at 158.0 ft.									
<i>W.P. Murdoch</i>									

NORTHERN MINER FORM 503 REV./54

DRILLED BY INSPIRATION DIAMOND DRILLING CO. SIGNED W. P. Murdoch.



# DIAMOND DUPLICATE COPY

POOR QUALITY ORIGINAL  
TO FOLLOW

PROPERTY FEDERAL - BALDWIN

HOLES No. 24

SHEET NUMBER 1  
SECTION FROM  
285 ft. north of baseline A

STARTED NOV. 1/56

LATITUDE and 783 ft. west of DATUM  
0.00

COMPLETED NOV. 17/56

DEPARTURE

BEARING S-20 deg. -E  
collar -70 deg; 400 ft.-45 deg.

ULTIMATE DEPTH

ELEVATION

DIP 100 ft.-63 deg; 500 ft.-41 deg.  
200 ft.-56 deg; 600 ft.-36 deg.  
300 ft.-49 deg.

PROPOSED DEPTH

DEPTH FEET	FORMATION	SAMPLE NO	FROM	TO	WIDTH	ASSAY VALUES			
0.00	20.00								
20.00	40.00								
40.00	86.00								
86.00	159.00								
159.00	165.00								
165.00	241.50								
241.50	570.00								
570.00	603.00								
603.00	607.00								
607.00	626.00								
626.00	644.00								

END OF HOLE

Drilled by: INSPIRATION DIAMOND DRILLING CO.

Signed: W. P. Murdoch

*COPY.*

# DIAMOND DRILL RECORD

PROPERTY FEDERAL - BALDWIN

HOLE No. 24

SHEET NUMBER 1  
285 ft. north of baseline A

SECTION FROM TO

STARTED Nov. 10 /56

LATITUDE and 783 ft. west of DATUM 0.00

COMPLETED NOV. 17 /56

DEPARTURE BEARING S-20 deg -E

ULTIMATE DEPTH 644 ft.

ELEVATION 26.35

collar-- 70 deg.; 400 ft.-45 deg.  
DIP 100 ft.- 63 deg.; 500 ft.-41 deg.  
200 ft.- 56 deg.; 600 ft.-36 deg.  
300 ft.- 49 deg.

PROPOSED DEPTH

ASSAY VALUES

DEPTH FEET	FORMATION	ASSAY VALUES
0.00-- 20.00--	Casing.	
20.00-- 40.00--	Dark grey-green sericitic schist at 60 deg. to core. ( medium grained impure quartzite ) some very finely disseminated mineral.	
40.00-- 86.00--	Impure fine grained quartzite.	
86.00-- 159.00--	Greywacke, some impure quartzite, highly sheared, talcose, in places. 129-130--blue-grey quartz, a little pyrite and chalco.	
159.00-- 165.00--	Greywacke, banded and slightly dragfolded.	
165.00-- 241.50--	Greywacke, well sheared, quite talc. in places. 200-200.8--quartz 221-223-- quartz and schist.	
241.50-- 570.00--	Quartzite, coarse grained, varying from light grey, coarse gnained, to bluish, silicified medium grained then to dark grey, medium grain all quite siliceous. Some pyrite and a little chalco and pyrrhot. An occasional quartz stringer from 475. At 495--6 inches quartz	
570.00-- 603.00--	Conglomerate, an occasional pebble. Fairly well sheared, slightly altered.	
603.00-- 607.00--	Schist, fairly well silicified, some chalco. 603-603.6--fairly well sheared and altered. Some chalco.	
607.00-- 626.00--	Highly silicified with a fair amount of quartz present and an occasional narrow band of schist. Chalcopyrite distribution fairly erratic.	
626.00--644.00--	Sericitic schist, fairly well altered and silicified. Some patchy chalco. An occasional blue quartz stringer. 628.8-630.8--fair chalcopyrite.	

END OF HOLE

NORTHERN PLASTER FORM 200-450-54

DRILLED BY INSPIRATION DIAMOND DRILLING CO.

SIGNED

*W.P. Murdoch*  
W.P. Murdoch.

# DIAMOND DRILL RECORD

PROPERTY FEDERAL-BALDWIN HOLE No. 25  
 SHEET NUMBER 1 SECTION FROM \_\_\_\_\_ TO \_\_\_\_\_ STARTED Nov. 18/56  
 LATITUDE 275 ft. north of Baseline A DATUM \_\_\_\_\_ COMPLETED Nov. 27/56  
 DEPARTURE 1425 ft. west of 0.00 BEARING N-20 deg.-E. ULTIMATE DEPTH 618  
 ELEVATION 81.91 DIP 0.00--55 deg. 300.0-45-30 PROPOSED DEPTH \_\_\_\_\_  
100.00--50-30 400.0-45-30  
200.00--51-30 500.0-41-30

DEPTH FEET	FORMATION	SAMPLE NO.	FROM	TO	WIDTH	ASSAY VALUES			
0.00	5.00--CASING								
5.00	25.00--Quartzite, medium grained.								
25.00	93.00--Fine grained, impure, sericitic quartzite, fairly well sheared.								
93.00	159.50--Diabase, very fine grained, brownish, 157-159.5--well sheared, chloritic, some pyrrhotite.								
159.50	484.00-- Sericitic greywacke, well sheared at 35 deg.; some sections talcy, slight banding.								
	430-443--shearing more intense and talcy, more open and containing quartz stringers.								
	443.00-484.0--small streaks of pyrrhotite, a fair amount of light alteration, schist 45-60 deg.								
	484.0-489.0--Some silicification and a fair amount of pyrite.								
484.00	604.00--Quartzite, coarse grained-519.5-520- 1-1/2 % copper (est.)								
	487-489--quartz-some pyrite, chalcopyrite and pyrrhotite.								
	572-592--some fracturing, a little silicification and alteration.								
604.00-	618.00--Quartzite, coarse grained; pebbly. at 612 to 618.								
	<u>NOT SAMPLED</u>								

NORTHERN MINER FORM 505 REV./54

DRILLED BY Inspiration Diamond Drilling co.

SIGNED \_\_\_\_\_

*W.P. Murdoch*  
W.P. Murdoch.

# DIAMOND DRILL RECORD

PROPERTY FEDERAL-BALDWIN

HOLE No. 26

SHEET NUMBER 1 SECTION FROM \_\_\_\_\_ TO \_\_\_\_\_

STARTED Nov. 18/56.

LATITUDE 274 ft. north of Baseline A  
and 1725 ft. west of 0.00

COMPLETED Nov. 28/56

DEPARTURE \_\_\_\_\_ BEARING South 20 deg. West.  
0.00-50 deg. 300- 41 deg.

ULTIMATE DEPTH 565 ft.

ELEVATION 41.15 DIP 100.00-46 " 400- 37-30  
200.00-45 "

PROPOSED DEPTH \_\_\_\_\_

DEPTH FEET	FORMATION	SAMPLE NO.	FROM	TO	WIDTH	ASSAY VALUES			
0.00	16.00--CASING								
16.00	31.00--Quartzite, fine grained, fairly well fractured, some silicification.								
31.00	79.00--Impure quartzite, very fine grained, some medium grained, grading into fine grained greywacke.								
79.00	122.50--Fine grained, grey, impure quartzite, fairly well sheared, schist at 30 de								
122.50	181.00--Diabase, fine grained; from 148-175- medium grained.								
181.00	417.00--Greywacke or impure quartzite, well sheared and sericitized; some fine banding. 211.5-217- white milky quartz with very little ch chalcopyrite. 239.5-241.0- core lost. 389.0-417.0- contains bands up to 16 in. of massive, fine grained quartzite.								
417.									
417.00	477.50--Greywacke, well sheared; From 436-a fair number of small fractures containing pyrrhotite and a little chalcopyrite; schist 15 deg.								
477.50	479.00--70 % quartz, the remainder, schist. A considerable amount of pyrrhotite in streaks								
479.00	505.00--Quartzite, medium to coarse grained, some sections sheared, and silicified and containing some sulphide.								
	488-489.5- slightly sheared and silicified, some chalcopyrite and pyrrhotite.								
	492.5-497-Schist-dark green to brown.								

# DIAMOND DRILL RECORD

PROPERTY FEDERAL-BALDWIN HOLE No. 26  
 SHEET NUMBER 2 SECTION FROM \_\_\_\_\_ TO \_\_\_\_\_ STARTED \_\_\_\_\_  
 LATITUDE \_\_\_\_\_ DATUM \_\_\_\_\_ COMPLETED \_\_\_\_\_  
 DEPARTURE \_\_\_\_\_ BEARING \_\_\_\_\_ ULTIMATE DEPTH \_\_\_\_\_  
 ELEVATION \_\_\_\_\_ DIP \_\_\_\_\_ PROPOSED DEPTH \_\_\_\_\_

DEPTH FEET	FORMATION	SAMPLE NO.	FROM	TO	WIDTH	ASSAY VALUES			
505.00	535.00--Blue-grey, fairly well silicified, slightly fractured, fine grained quartzite ?								
	505-507- fairly well sheared and containing brown streaks.								
	513-520-blue-grey, fairly well silicified quartzite ?								
	fairly well fractured-514-515.5-a little chalcopryrite.								
	530-535-well sheared and altered, containing pistacio green streaks-532-535 a little chalcopryrite with 0.5 ft section at 533 probably grading 3.5 % copper.								
535.00	559.00--Greywacke schist with occasional streaks and blobs of chalcopryrite.								
559.00	565.00--Impure quartzite, slightly sheared and silicified, containing a little sulphide.								
	END OF HOLE								
	<u>NOT SAMPLED</u>								

NORTHERN MINER FORM 908 REV. 7/54  
 DRILLED BY Inspiration Diamind Drilling Co.

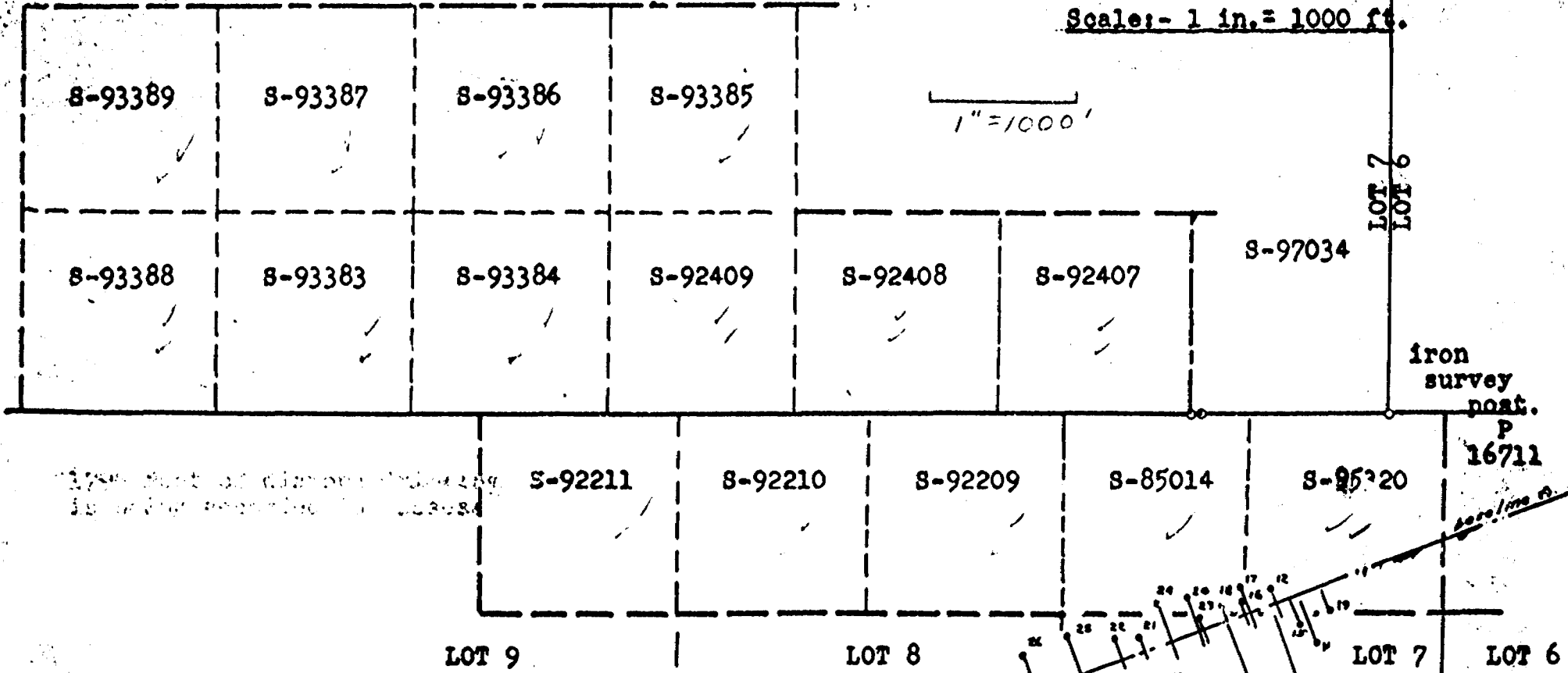
SIGNED W.P. Murdoch  
 W.P. Murdoch. *V.E.s.*

Baldwin

**A GROUP OF 15 MINING CLAIMS**  
 Situated in Porter and Baldwin Twps.  
**SUDBURY MINING DIVISION**

Registered in the name of **F. S. Linton**--Mining Lic. No. C 19758

Scale:- 1 in. = 1000 ft.



1796 feet of diamond drilling is being recorded for assessment purposes as follows :-

Hole No.	From	To	Feet	Hole No.	From	To	Feet
11	285	437	152	17	0	263	263
12	0	243	243	18	0	67	67
14	700	805	105	19	0	227	227
15	67	214	147	20	0	205	205
16	0	127	127	24	0	210	210



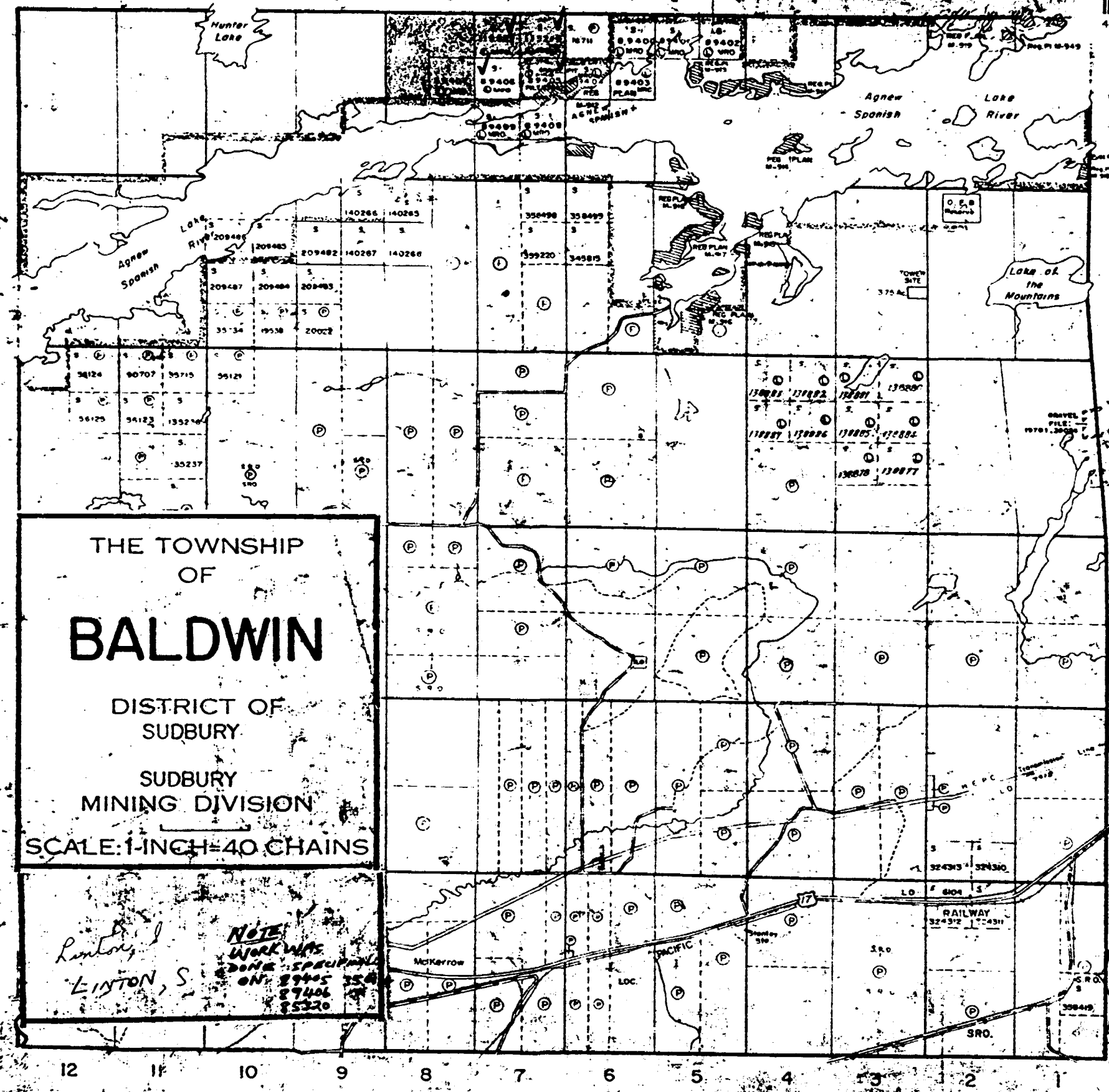
January 17th, 1957.

Porter Twp. (M-1061)



900

Shakespeare Twp. (M-1104)



VI

V

IV

III

II

I

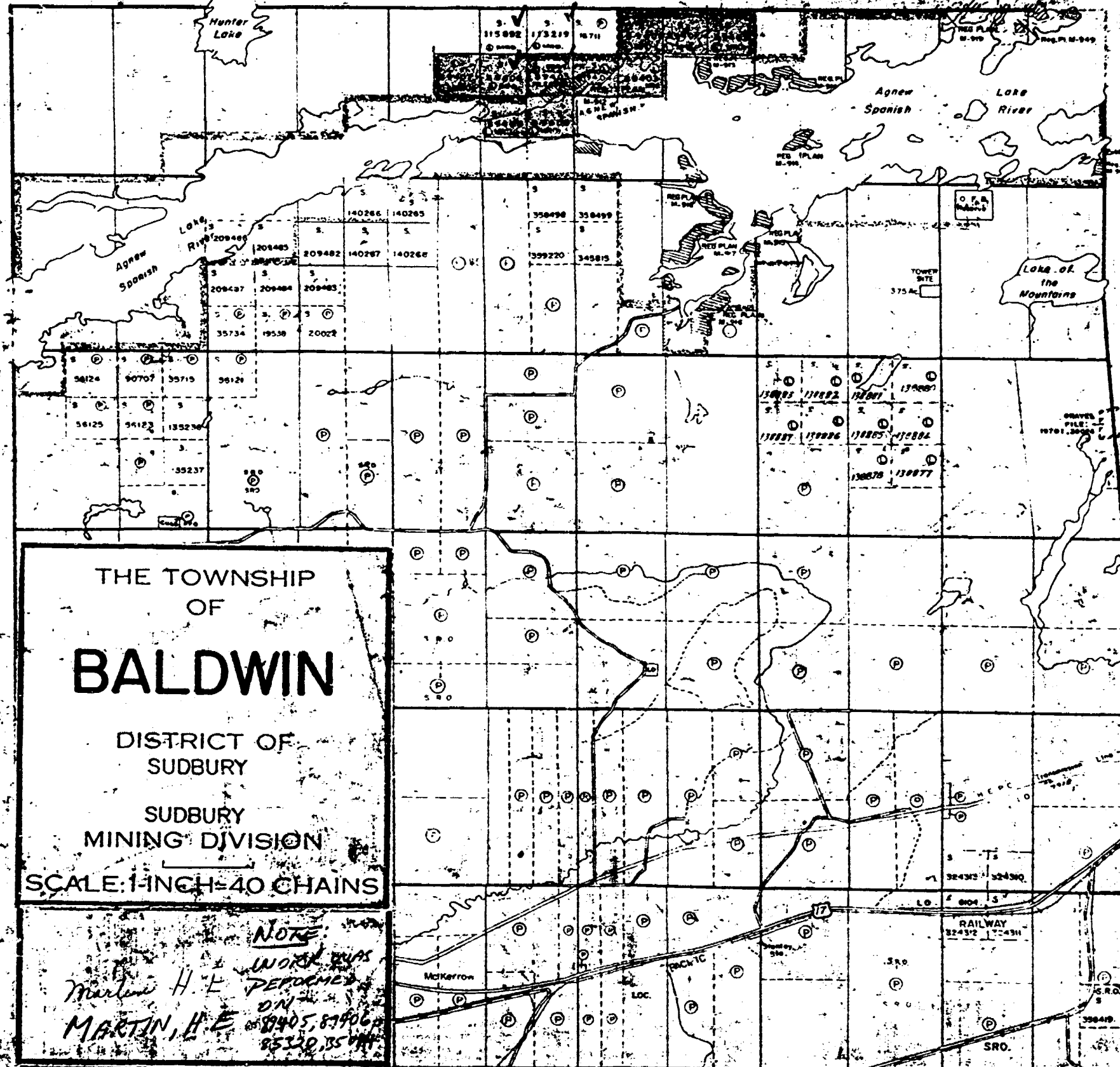
Nairn Twp. (M-883)

THE TOWNSHIP  
OF  
**BALDWIN**  
DISTRICT OF  
SUDBURY  
SUDBURY  
MINING DIVISION  
SCALE: 1 INCH = 40 CHAINS

*Linton, S.*  
**NOTE**  
WORK WAS  
DONE SPECIALLY  
ON 2945 2946  
2946 2947  
2948

Merritt Twp. (M-863)

Porter Twp. (M-106)



THE TOWNSHIP  
OF  
**BALDWIN**  
DISTRICT OF  
SUDBURY  
SUDBURY  
MINING DIVISION  
SCALE: 1 INCH = 40 CHAINS

**NOTE**  
WORK WAS  
PERFORMED  
ON  
MARTIN, H.E.  
88405, 88406,  
88330, 88341

VI

V

IV

III

II

I

Nairn Twp. (M-883)

12 11 10 9 8 7 6 5 4 3 2 1

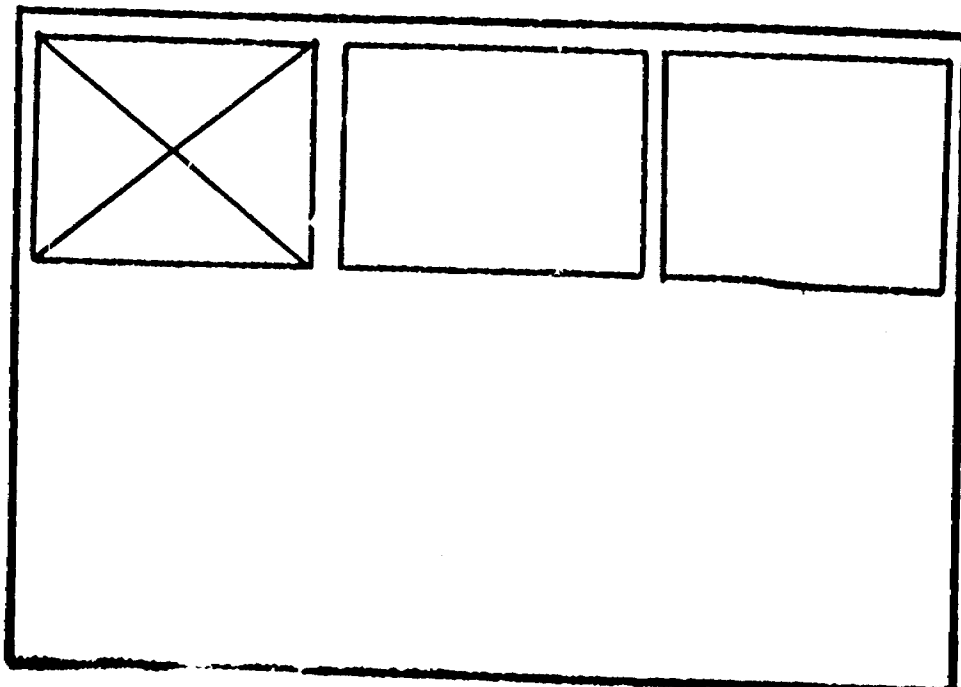
Merritt Twp. (M-863)

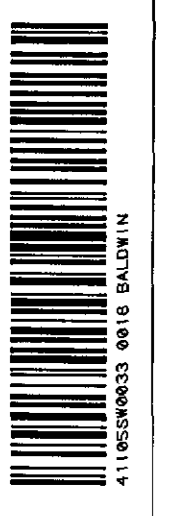
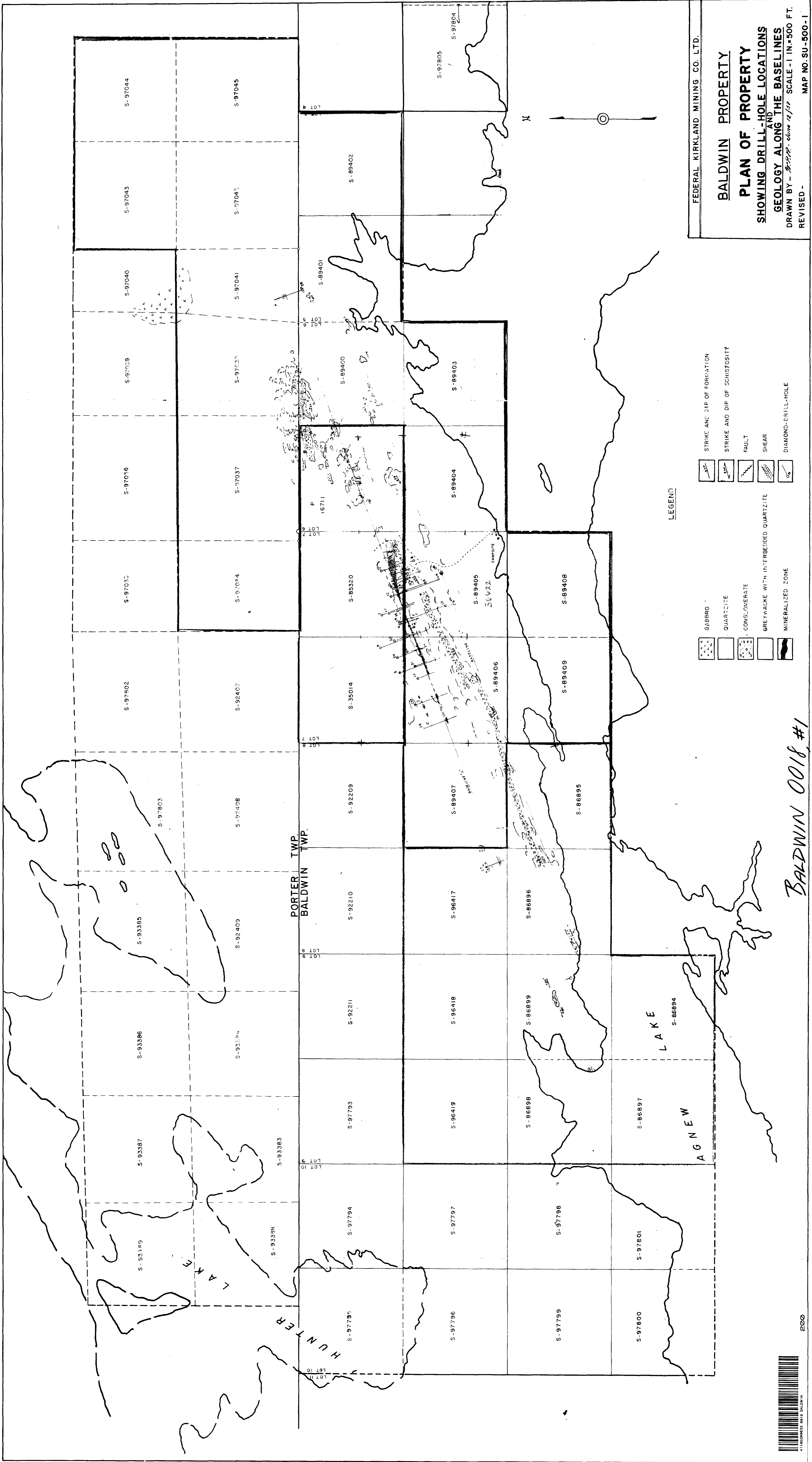


SEE ACCOMPANYING  
MAP(S) IDENTIFIED AS

BALDWIN 0018, #1

LOCATED IN THE MAP  
CHANNEL IN THE FOLLOWING  
SEQUENCE (X)





*BALDWIN 0018 #1*