



411055W0037 0016A1 BALDWIN

010

# Diamond Drilling

Township OF BALDWIN

Report NO: 27

Work performed by: MID NORTH ENGINEERING

Claim NO	Hole NO	Footage	Date	Note
S 137665	# R-1	472'	July/67	
	# 3	495'	July/67	
S 137664	# 4	165'	July/67	
	# 5	381'	Aug/67	
S 139202'	# 6	227'	Aug/67	
	# 7	401'	Aug/67	

TOTAL: 6 DH 2141 FT

Notes:

Company MID-NORTH ENGINEERING SERVICES LTD.

**Drill Hole Log**

Dip Tests

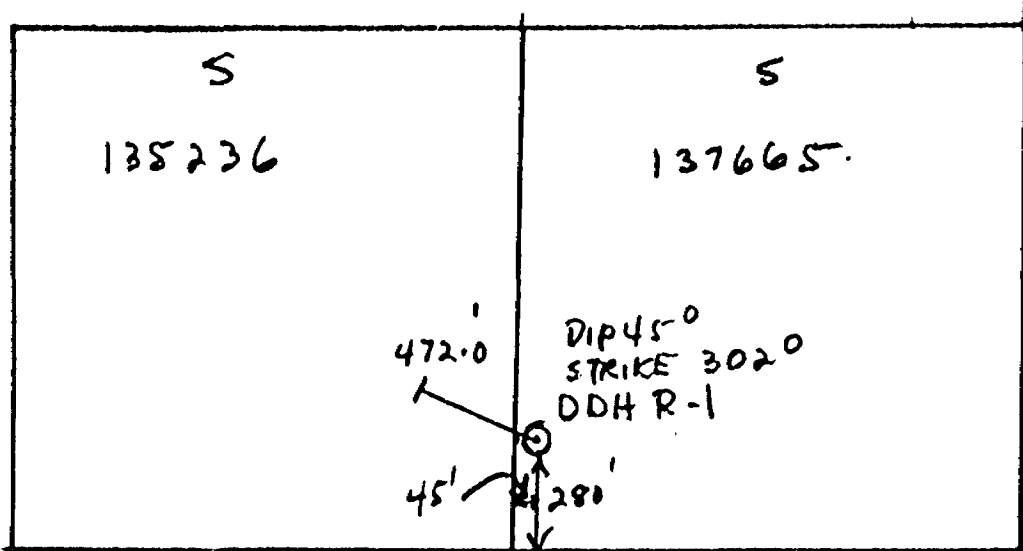
At \_\_\_\_\_ Ft. \_\_\_\_\_  
 At \_\_\_\_\_ Ft. \_\_\_\_\_  
 At \_\_\_\_\_ Ft. \_\_\_\_\_  
 At \_\_\_\_\_ Ft. \_\_\_\_\_  
 At \_\_\_\_\_ Ft. \_\_\_\_\_

Property BARDWIN TWP  
SUD BURY MINING DIST  
 Claim No. 5137665  
 Working Place \_\_\_\_\_  
 Baseline Footage 1660 NORTH  
 Baseline Offset 45-0' EAST  
 Date Started JULY 2, 1967  
 Date Completed JULY 15, 1967

Hole Number R-1  
 Dip 45°  
 Length 472-0  
 Bearing 302°  
 Elev. Collar \_\_\_\_\_  
 Horiz. Trace \_\_\_\_\_  
 Vert. Trace \_\_\_\_\_  
 Date Logged \_\_\_\_\_

FROM	TO	DESCRIPTION	SAMPLE NUMBER	ASSA
0	32-0	CASINGS.		
32-0	66-5	IMPURE QUARTZITE, NOTICEABLE BEDDING. AT 66-5 SPLASH CPY.		
66-5	77-0	WHITE QUARTZITE.		
77-0	182-5	TUFF? WEAL DEFINED BEDDING. FINE SCATTERED CPY, PYR, PYRR THROUGH.		
182-5	270-0	WHITE QUARTZITE, VERY HARD. AT 252-0 - STREAK OF CPY.		
270-0	324-5	MASSIVE GREY SEDIMENT, NO DISCERNIBLE BEDDING.		
324-0	352-5	INTENSIVE - POSSIBLE GRANODIORITE.		
352-5	435-0	CONGLOMERATE, SPARSE PEBBLES & BOULDERS. SCATTERED CPY & PYRR		
435	457-0	BASIC FLOW OR INTRUSIVE.		
457	462	LAMPROPHYRE.		
462-0	472-0	GREY SEDIMENT, SHEARED AT 463-0 SPLASH OF CPY.		
472-0		END OF HOLE		
		END OF HOLE		

Logged by R. J. Jensen P. Eng.



DRILL HOLE LOCATION FOR ASSESSMENT WORK ON  
 ON MIDNORTH ENGINEERING SERVICES LTD OPTION  
 BAWDWIN TWP. SUDBURY MINING DISTRICT.

SCALE  $1'' = 500'$

RIB July 18, 1967

BALDWIN TOWNSHIP  
SUDBURY MINING DIVISION -

				S 137664	
S 139701			S 135236	S 137665	S 137663
S 137662	S 137661			S 135237	S 139202
S 137660	S 137659	S 137658	S 137666	S 139201	S 139204



MIDNORTH ENGINEERING SERVICES OPTION

SCALE 1" = 1/4 MILE

R.I.B. July 18, 1967

# DIAMOND DRILL RECORD

MID-NORTH ENGINEERING SERVICES LIMITED  
 PROPERTY / Rowan Consolidated Mines Limited - ) HOLE NO. 3  
 (Baldwin Township)

SHEET NUMBER \_\_\_\_\_ SECTION FROM \_\_\_\_\_ TO \_\_\_\_\_ STARTED July 18, 1967  
 LATITUDE 2400 North DATUM \_\_\_\_\_ COMPLETED July 25, 1967  
 DEPARTURE 455 E. BEARING West ULTIMATE DEPTH 495.0  
 ELEVATION \_\_\_\_\_ DIP 45° PROPOSED DEPTH \_\_\_\_\_

DEPTH FEET	FORMATION	SAMPLE NO.	WIDTH OF SAMPLE	GOLD g	SLUDGE GOLD g
0 - 27.0	Casing				
27.0 - 102.8	Basic Lava				
	at 102.8 - 2" Calcite & breccia				
102.8 - 121.5	Tuff ?				
	at 105.8 - Splash cpy.				
121.5 - 175.5	Conglomerates, numerous pebbles				
	mostly Qtz., some angular				
	scattered pyr., cpy. & pyrr.,				
	pink garnets.				
175.5 - 227.0	Massive gray sediment, odd Qtz. pebble				
	210.0 - 221.0 - Well fract'd.				
227.0 - 495.0	Impure Qtzte.				
	487.0 - 495.0 - Broken Fract'd.				
495.0	End of Hole				

N.M.P. TORONTO-STOCK FORM NO. 901 REV. 12/51

DRILLED BY \_\_\_\_\_ SIGNED Ralph I. Benner

# DIAMOND DRILL RECORD

MID-NORTH ENGINEERING SERVICES LIMITED  
 PROPERTY Rowan Consolidated Mines Limited  
 (Baldwin Township)

HOLE NO. 4

SHEET NUMBER \_\_\_\_\_

SECTION FROM \_\_\_\_\_ TO \_\_\_\_\_

STARTED July 29, 1967

LATITUDE 2665 North

DATUM \_\_\_\_\_

COMPLETED July 30, 1967

DEPARTURE 1600 East

BEARING 235°

ULTIMATE DEPTH 165.0

ELEVATION \_\_\_\_\_

DIP 60°

PROPOSED DEPTH \_\_\_\_\_

DEPTH FEET	FORMATION	SAMPLE NO.	WIDTH OF SAMPLE	GOLD \$	SLUDGE GOLD \$
0 - 6.0	Casing				
6.0 - 65.0	Greywacke				
65.0 - 75.0	Quartzite & coarse grit. - occasional pebble; sl. radioactivity.				
75.0 - 165.0	Greywacke, scattered cpy. & pyrr.				
165.0	End of Hole				

N.M.P., TORONTO - STOCK FORM NO. 501 REV. 12/61

DRILLED BY \_\_\_\_\_

SIGNED Ralph H Benner

# DIAMOND DRILL RECORD

MID-NORTH ENGINEERING SERVICES LIMITED

PROPERTY (Rowan Consolidated Mines Limited) - Baldwin Township HOLE NO. 5

SHEET NUMBER \_\_\_\_\_ SECTION FROM \_\_\_\_\_ TO \_\_\_\_\_ STARTED August 7, 1967  
 West Boundary Claim  
 LATITUDE 780 South DATUM \_\_\_\_\_ COMPLETED August 12, 1967  
 DEPARTURE \_\_\_\_\_ BEARING South ULTIMATE DEPTH 381.0  
 ELEVATION \_\_\_\_\_ DIP 45° PROPOSED DEPTH \_\_\_\_\_

DEPTH FEET	FORMATION	SAMPLE NO.	WIDTH OF SAMPLE	GOLD g	<del>SLUDGE</del> GOLD g
0 - 5.0	Casing				
5.0 - 48.5	Basic Lava Qtz. Strs.				
48.5 - 137.0	Banded Greywacke				
137.0 - 166.0	Quartzite				
166.0 - 292.0	Impure Qtz. & Greywackes				
292.0 - 355.0	Quartzite				
	312.8 - 313.8 - Qtz. Pebble Conglomerate				
	RS-1 12" - Radioactive				
355.0 - 381.0	Diorite				
381.0	End of Hole				

N.M.P. TORONTO-STOCK FORM NO. 501 REV. 12/61

DRILLED BY \_\_\_\_\_ SIGNED Ralph I. Benner

# DIAMOND DRILL RECORD

MID-NORTH ENGINEERING SERVICES LIMITED

PROPERTY (Rowan Consolidated Mines Limited)  
(Baldwin Township)

HOLE NO. 6

SHEET NUMBER \_\_\_\_\_

SECTION FROM \_\_\_\_\_ TO \_\_\_\_\_

STARTED Aug. 14, 1967

LATITUDE 800' North

DATUM \_\_\_\_\_

COMPLETED Aug. 21, 1967

DEPARTURE 100' East

BEARING 280°

ULTIMATE DEPTH 227.0

ELEVATION \_\_\_\_\_

DIP 45°

PROPOSED DEPTH \_\_\_\_\_

DEPTH FEET	FORMATION	SAMPLE NO.	WIDTH OF SAMPLE	GOLD g	SLUDGE GOLD †			
0 - 32.0	Casing							
32.0 - 57.5	Impure Qtz., sheared, odd scattered pebble, sl. pyr.							
57.5 - 132.0	Impure Qtzite, 50% quartz							
132.0 - 135.8	Argillite ?							
135.8 - 144.0	Qtz. pebble conglomerate, rusty, slightly radioactive - 138.2 - 143.2	R6 - 1	5.0					
144.0 - 177.0	impure Qtzites							
<del>177.0 - 223.0</del>								
177.0 - 223.0	Qtz. pebble conglomerate - 207 - 212	R6-2	5.0					
223.0 - 227.0	Greywacke							
227.0	End of Hole							

DRILLED BY .....

SIGNED R. LI. BENNER



# DIAMOND DRILL RECORD

MID-NORTH ENGINEERING SERVICES LIMITED

PROPERTY (Rowan Consolidated MINES LIMITED)

HOLE NO. 7

(Baldwin Township)

SHEET NUMBER \_\_\_\_\_ SECTION FROM \_\_\_\_\_ TO \_\_\_\_\_ STARTED Aug. 23, 1967  
LATITUDE \_\_\_\_\_ DATUM \_\_\_\_\_ COMPLETED Aug. 26, 1967  
DEPARTURE 800' North BEARING 280° ULTIMATE DEPTH 401.0  
ELEVATION 150' East DIP 60° PROPOSED DEPTH \_\_\_\_\_

DEPTH FEET	FORMATION	SAMPLE NO.	WIDTH OF SAMPLE	GOLD g	SLUDGE GOLD g
0 - 60.0	Casing				
60.0 - 170.0	Sheared, altered, scattered Qtz. pebbles, weak radio activity - 110.0 - 155.0 - 50% Qtz.				
170.0 - 401.0	Alternate layers of greywacke and Qtz. scattered Qtz. pebbles but no definable bed. scattered pyr. & cov.				
401.0	End of Hole				

N.M.P. TORONTO-STOCK FORM NO. 801 REV. 12/61

DRILLED BY .....

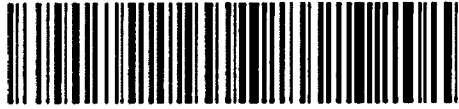
SIGNED R. I. Benner



ONTARIO

DEPARTMENT OF MINES

Aug. 1, 1967.



411055W0037 0016A1 BALDWIN

300

Dr. J. F. Donovan,  
Resident Geologist,  
172 Elm Street W.,  
SUDBURY, Ontario.

Dear Sir:

We enclose herewith Diamond Drill log and sketch in the name of Midnorth Engineering Services Ltd., pertaining to work performed on claims S.135236 and S.137665, Baldwin Twp.

Yours very truly,

K. M. Hallock  
Mining Recorder

KMH;jm  
Encl.

1 DDH (R-1)  
2 claims



ONTARIO

DEPARTMENT OF MINES

SUDBURY MINING DIVISION

SUDBURY, ONTARIO

Dec. 27, 1967.

Dr. J. F. Donovan,  
Resident Geologist,  
172 Elm Street W.,  
Sudbury, Ontario.

Dear Sir:

We enclose herewith Diamond Drill logs and sketch  
pertaining to work submitted in the name of Mid-North Engineer-  
ing Services Ltd. All work was performed on claims S.139202,  
137664-5, Baldwin Township.

Yours very truly,

A handwritten signature in cursive script that reads "K. M. Hallock".

K. M. Hallock  
Mining Recorder

KMH: jm  
Encl.

500A

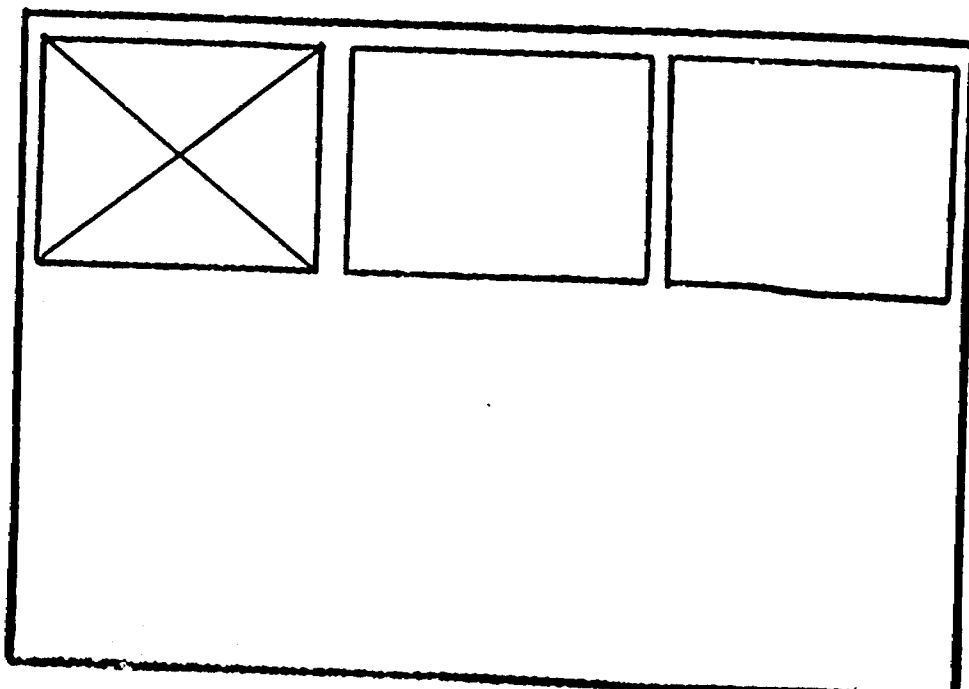
SEE ACCOMPANYING  
MAP(S) IDENTIFIED AS

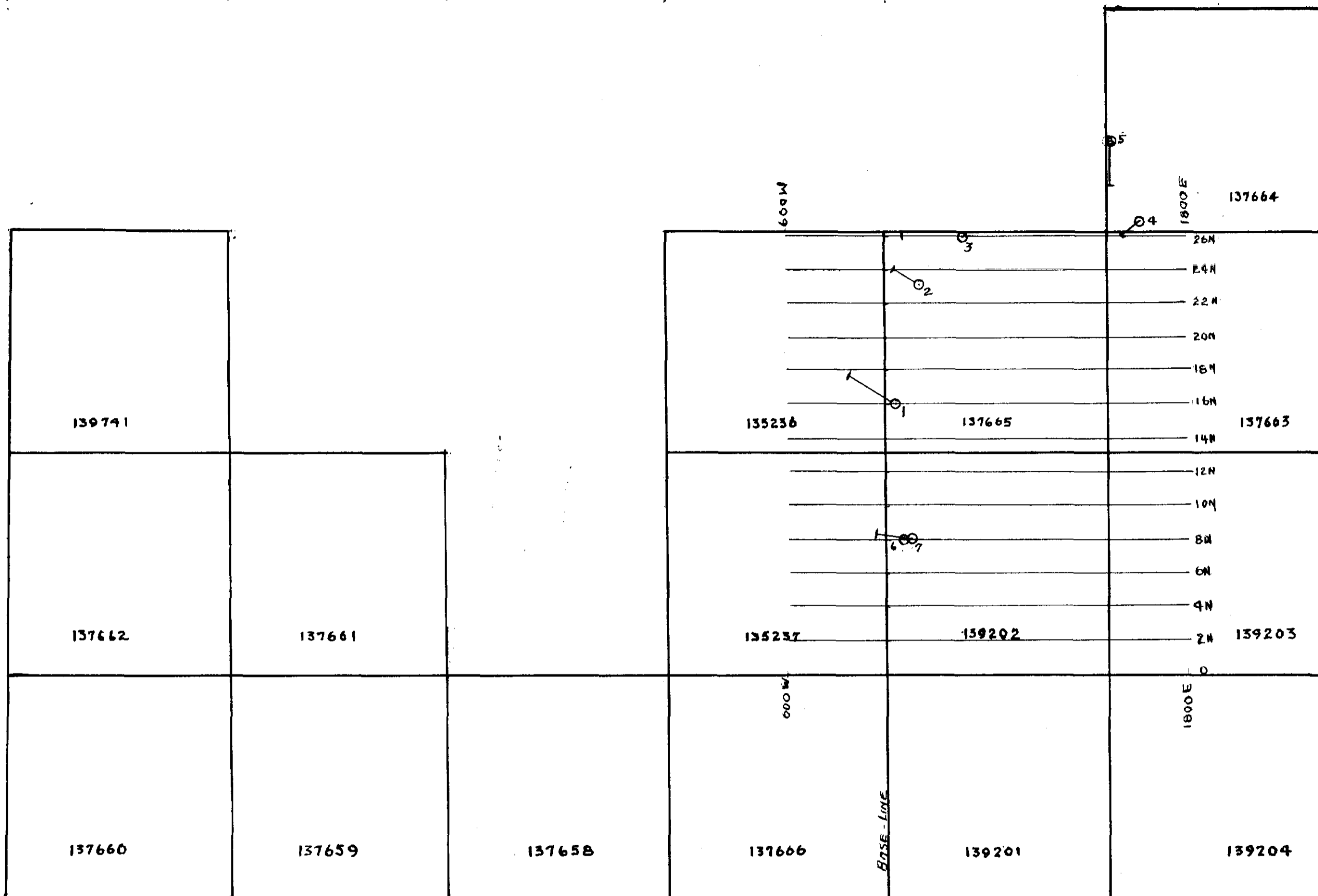
BALDWIN 0016-A1, #1

-----

-----

LOCATED IN THE MAP  
CHANNEL IN THE FOLLOWING  
SEQUENCE (X)





**DRILL HOLE LOCATIONS ON THE PROPERTY OF**  
**MID-NORTH ENGINEERING SERVICES LIMITED**  
 BALDWIN TWP - SUDBURY MINING DIVISION

SCALE: ONE INCH = 600 FEET

RIE Dec. 1967

BALDWIN 0016-A1, #1

