



010

Diamond Drilling

Township OF SHAKESPEARE

Report NO: 20

Work performed by: (DOMINION GULF COMPANY)
DOMINION GULF OF CANADA LIMITED

Claim NO	Hole NO	Footage	Date	Note
S 72566	167-54-1	148'	May/54	
S 71877	167-54-2	158'	May/54	
TOTAL:		2 PH	306'	

Notes:

PROPERTY Shakespeare IHOLE NUMBER 167-54-1SHEET NUMBER 1

DIAMOND DRILL RECORD

SECTION FROM TO

LOCATION: LAT. Claim No. S-72566
DEP. 90'W of 330'S of B.L. "B" on L12+00ESTARTED May 18, 1954

ELEVATION OF COLLAR

COMPLETED May 26, 1954

DATUM

ULTIMATE DEPTH 148'DIRECTION AT START: BEARING South
DIP 45°PROPOSED DEPTH Limit of equipment

DEPTH FEET	FORMATION	SAMPLE NO	WIDTH OF SAMPLE	GOLD \$	SLUDGE GOLD \$
0-4	Casing				
4-30	Quartz pebble conglomerate - blue quartz pebbles subrounded to rounded up to 1/4" dia., minor pyrite at 7.0', locally rusty from weathering, light buff colour; cores well with pieces up to 1 1/2" long. 17.5-19.5 core shattered				
30	Gradational contact				
30-72.5	Quartzite - fine grained, light buff coloured, fairly uniform; a few quartz pebbles near the start. 48-50 coarse grained with some quartz pebbles. 50-56 fine grained, buff colour 56-62 coarse grained, occasional pebbles to 1/8" 62-63 fine grained, soft, sericitic	163	91.6-92		
72.5-103.2	Impure Quartzite - schistose, soft, easily scratched with a knife 75.1-72.8 Lost core 75-76.1 very fine grained schist 76.1-90 fairly massive appearance, occasional pebbles or fragments of quartz. 90-101.5 schistose, muddy or altered 102.4-103.2 Lost core 101.5-102.4 very fine grained, grey, with quartz fragments				

NORTHERN MINERALS LIMITED TORONTO STOCK EXCHANGE CODE NO. 101

DRILLED BY E. McKinnon - D.G.C.SIGNED C. McAulay

PROPERTY Shakespeare I

HOLE NUMBER 167-54-1

SHEET NUMBER 2

DIAMOND DRILL RECORD

SECTION FROM TO

LOCATION: LAT.....
 DEP.....
 ELEVATION OF COLLAR.....
 DATUM.....
 DIRECTION AT START: BEARING.....
 DIP.....

STARTED.....
 COMPLETED.....
 ULTIMATE DEPTH.....
 PROPOSED DEPTH.....

DEPTH FEET	FORMATION	SAMPLE NO	WIDTH OF SAMPLE	GOLD \$	SLUDGE GOLD \$
103.2-104.2	Syenite or granite with very little quartz - medium grained; quartz fragments or inclusions; part of indefinite marginal zone between the sediments and the granite.				
104.2-105	Pegmatite				
105-106	Granite, fine grained, uniform				
106-107.1	Pegmatite				
107.1-107.6	Granite or syenite, fine grained				
107.6-108	Pegmatite mainly				
108-109.6	Granite, medium grained, impure				
109.6-109.8	Quartz, white				
109.8-110.4	Syenite				
110.4-111.1	Pegmatite, coarse grained				
111.1-130.2	Syenite, grey, dioritic, minor pegmatitic material at irregular intervals				
130.2-130.5	Granite, grades into following section,				
130.5-142	Granite - progressively lighter gray				
142-148	Granite - coarse grained, pink, fairly normal appearance				
	END OF HOLE.				

PROPERTY Shakespeare I

X / RAY

HOLE NUMBER 167-54-2

DIAMOND DRILL RECORD

SHEET NUMBER 1

SECTION FROM TO

LOCATION: LAT. Claim 9-72566 2' north of 14+46 east on
DEP. tie line

STARTED May 27, 1954.

ELEVATION OF COLLAR

COMPLETED May 31, 1954.

DATUM

ULTIMATE DEPTH 158

DIRECTION AT START BEARING 84.5° E
DIP 45°

PROPOSED DEPTH Limit of equipment

DEPTH FEET	FORMATION	SAMPLE NO	WIDTH OF SAMPLE	GOLD %	SLUDGE GOLD %
0-3	Casing				
3-26	Granite impure, gneissic, variable composition				No sludge after 24'
26-27.5	Granite				
27.5 - 28.0	Quartz vein				
28.0-32.5	Gneiss, grey, may be altered or impure granite				
32.5-34	Schist, fine grained dark grey				
34-53	Gneiss, grey, coarser grained				
53-87.5	Schist fine grained, dark, roughly banded, may have been greywacke originally, 54-55 lost core 65.5-66.1 lost core 61.3-63.8 coarser grained, lighter grey colour, variable; a few feldspar crystals 63.8-66.6 dark grey, streaky or rudely banded, very fine grained, tiny streaks of fine pyrite 66.6-67.3 quartz with minor pyrite 67.3-87.5 roughly banded, fairly uniform; magnetic from 75 on.				

PROPERTY, Shakespeare I

HOLE NUMBER 167-54-2

SHEET NUMBER 2

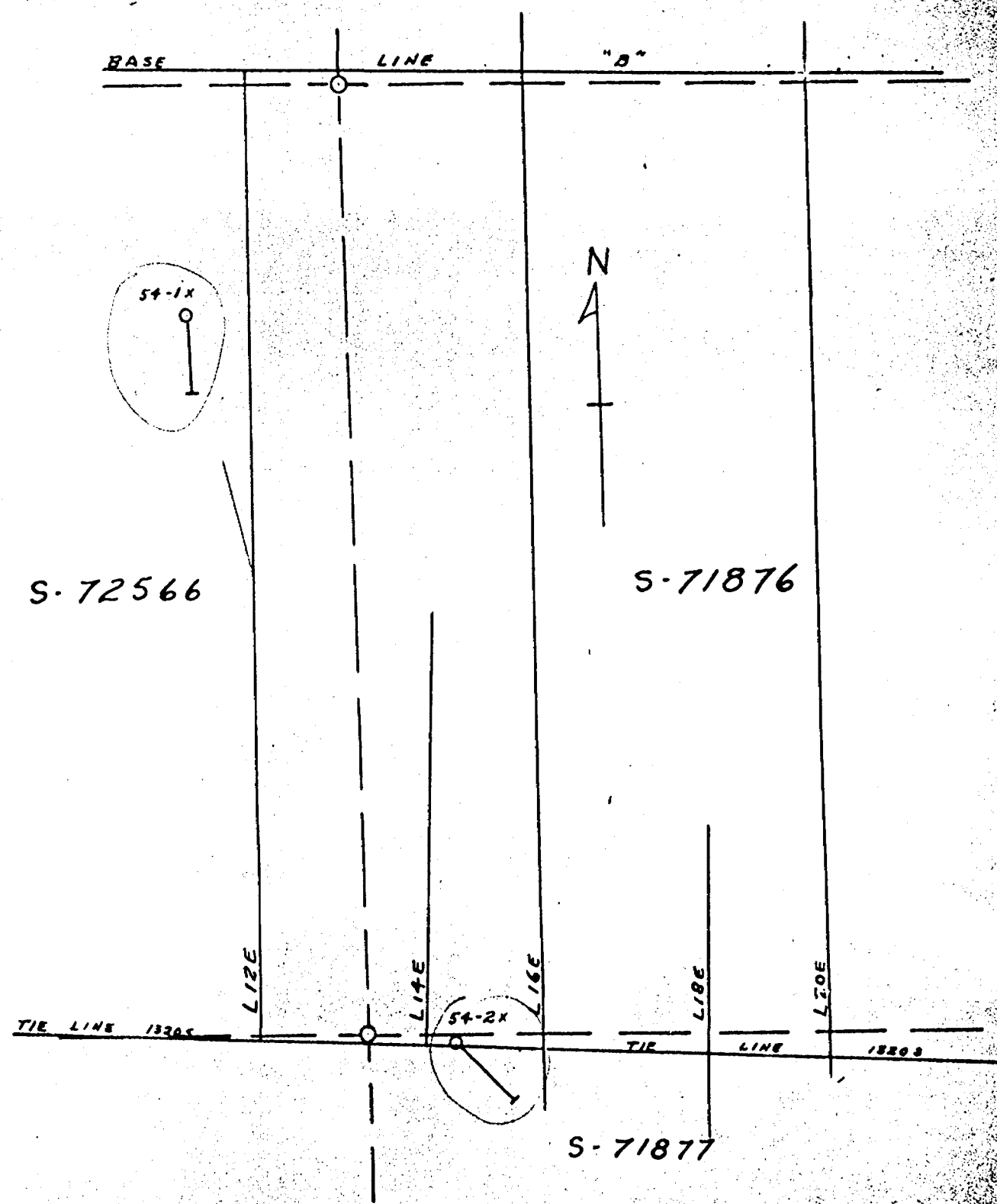
SECTION FROM TO

X - RAY
DIAMOND DRILL RECORD

LOCATION: LAT.
DIP
ELEVATION OF COLLAR
DATUM
DIRECTION AT START BEARING
DIP

STARTED
COMPLETED
ULTIMATE DEPTH
PROPOSED DEPTH

DEPTH	FORMATION	SAMPLE NO	WIDTH OF SAMPLE	GRADE	SLUGS OF GROUND
87.5	Gradational contact				
87.5-158	Quartz diabase(?)				
	slightly magnetic, locally slightly sheared,				
	101-103 rust seams, blocky				
	105-124 very fine grained, dark grey green,				
	occasional dark irregular quartz				
	stringers				
	124-125 roughly banded				
	125-142.5 medium grained, diabasic texture				
	144-144.5 quartz vein at 20° to core				
	146.9-147.7 creamy quartz vein at 45° to the				
	core				
	144-146.9 fairly coarse grained				
	158 - End of Hole				



Dominion Gulf Company
 LOCATION PLAN SHOWING D.P.N. 54-1X, 54-2X
 SHAKESPEARE I
 Province of Ontario
 Scale: 1:200
 Sept. 24, 1954



411055W0095 001201 SHAKESPEARE

900



DOMINION GULF COMPANY

165 BLOOR STREET EAST
TORONTO 5, ONTARIO, CANADA

E. W. WESTRICK
GENERAL AGENT

IN REPLY REFER TO:

October 28, 1954

Dr. M. E. Hurst,
Provincial Geologist,
Ontario Department of Mines,
Parliament Buildings,
Toronto, Ontario.

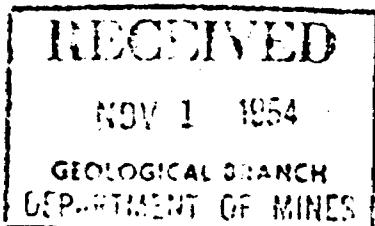
Dear Dr. Hurst:

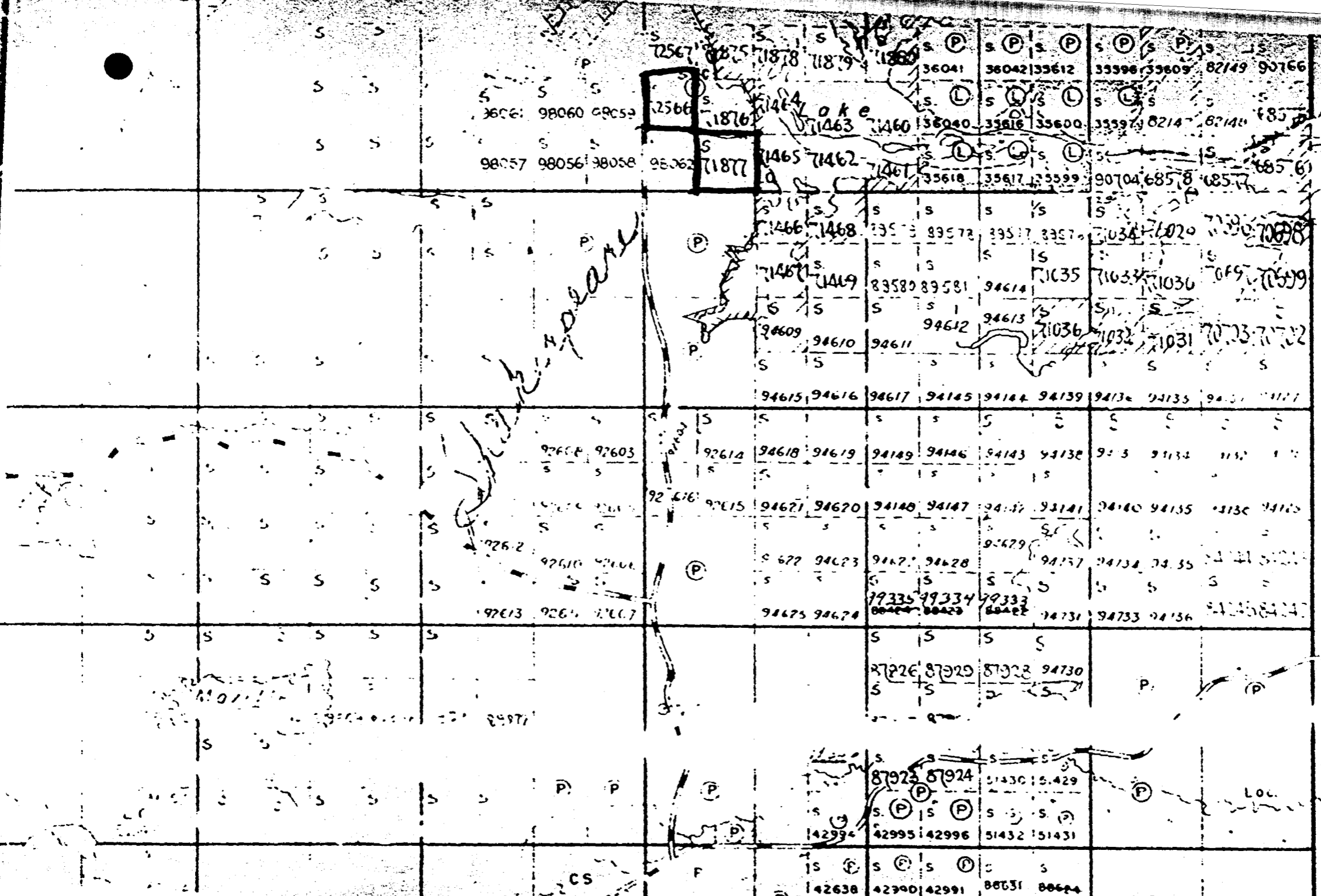
With reference to an assessment work report submitted to the Sudbury Mining Recorder on October 14, covering certain claims located in Shakespeare Township, please be advised that the diamond drill core is stored at our warehouse in Larder Lake, Ontario.

Very truly yours,

E. W. Westrick
E. W. Westrick.

JHS:jm
c.c. Mining Recorder, Sudbury Mining Division.





H. Dean

MO...

CS

P

P

P

P

P

P

P

P

P

Loc.

V

IV

III

II

Baldwin Twp.