



411055W0106 0016 SHAKESPEARE

010

# Diamond Drilling

Township OF SHAKESPEARE

Report NO: 10

Work performed by: BROULAN REEF MINES COMPANY LTD.

Claim NO	Hole NO	Footage	Date	Note
S 133409	BSU #1	537'	Aug/68	
	BSU #8	733'	Oct/68	
S 133411	BSU #9	1411'	Oct/68	
	BSU #10	1162'	Oct-Nov/68	
	SC-1	935'	Nov/68	
	SC-1	771'	Oct/67	
	SC-2	786'	Oct/67	
	SC-3	394'	Nov/67	
	SC-3-1-N	692'	Jan/68	
	SC-5	1250'	Feb/68	
S 133412	BSU #2	417'	Aug-Sept/68	
	BSU #3	567.5'	Sept/68	
	BSU #4	547'	Sept/68	
	BSU #6	870'	Sept/68	
	BSU #7	527'	Sept-Oct/68	
S 133417	BSU #5	610'	Sept/68	
	BSU #11	133'	Nov/68-Feb/69	
S 133420	SC-4	744'	Jan/68	

TOTAL:

18 DH

13,086.5 ft

13,086.5 FT

Notes:

BROULAN REEF MINES LIMITED

SHAKESPEARE TWP.

CLAIM 133409

STARTED 18-8-68

COMPLETED 23-8-68

HOLE NO. B.S.U. #1

PROPERTY SHAKESPEARE

DIP -55°

BEARING S 155° E  
S 25° E

LENGT. 537 ft

LAT. 51° S

DEP. 387' W

ELEV. ± 66' above Lake level

FOOTAGE		DESCRIPTION	DIP TEST	CORE				
FROM	TO			SPL NO.	FROM	TO	WIDTH	GRADE
0	18.0	Casing	100'/42½°					
18.0	65.0	Yellowish-green sericitic quartzite; med. to fine grained. Odd dark py.seams & disseminations.	200'/38° 300'/34°					
65.0	89.0	Green gritty quartzite with odd narrow pebble bands (up to 1/3" peb.size); same py.seams & dissem.	400'/32½° 500'/30°					
89.0	141.0	The same, grading locally into conglomeratic quartzite.						
		1" peb.band at 106' - 1" pebbles )						
		1" " " " 106½' - " )						
		6" " " " 112½' - " )						
		1" " " " 118' - " )						
		1" " " " 119' - " )						
		1" " " " 120' - " )						
		2" " " " 135½' - " )						
		some py. & pyrrh. in matrix						
141.0	150.0	Quartz pebble conglomerate, impure towards bottom peb.size - 1" to 4" max. py. & pyrrh. in matrix		4601	141.0	144.0	3.0'	
		The Lower 12" show 4 x B.G.		4602	144.0	147.0	3.0'	
				4603	147.0	150.0	3.0'	

BROULAN REEF MINES LIMITED

DIP \_\_\_\_\_

BEARING \_\_\_\_\_

LENGTH \_\_\_\_\_

STARTED \_\_\_\_\_  
COMPLETED \_\_\_\_\_

HOLE NO. B,S,U.#1  
PROPERTY \_\_\_\_\_

LAT. \_\_\_\_\_  
DEP. \_\_\_\_\_  
ELEV. \_\_\_\_\_

FOOTAGE		DESCRIPTION	CORE				
FROM	TO		SPL NO.	FROM	TO	WIDTH	GRADE
150.0	249.0	Banded Volcanic tuff (basement)					
249.0	255½	Basal conglomerate, banded, with some quartz pebbles in individual bands.					
255½	259.0	The same, but more gritty matrix; up to 2" peb.					
259.0	268½	Banded mudstone & mudstone cgl. with odd quartz-pebbles.					
268½	273	Poor, loosely packed qtz.peb.cgl. in greenish sericitic matrix. Up to 1" pebbles; pebbles are squeezed.	4604	268½	273	6.0'	
273.0	277.0	Greenish sericitic qte.					
277.0	291.0	Quartz pebble cgl. in greenish sericitic matrix. Peb. are squeezed; size up to several inches. Locally fair py. & pyrhh. in matrix. 2 x BG at 287½	4605	277.0	280.0	3.0'	
			4606	280.0	283.0	3.0'	
			4607	283.0	286.0	3.0'	
			4608	286.0	291.0	5.0'	
291.0	295.0	Greenish sericitic qte. med. grained, with a few odd qtz. pebbles.					
295.0	395	Greenish ser.qte. med. grained with local small peb.lenses & bands. 1/3" peb.					

BROULAN REEF MINES LIMITED

DIP \_\_\_\_\_

BEARING \_\_\_\_\_

LENGTH \_\_\_\_\_

STARTED \_\_\_\_\_  
 COMPLETED \_\_\_\_\_

HOLE NO. B.S.U.#1  
 PROPERTY \_\_\_\_\_

LAT. \_\_\_\_\_  
 DEP. \_\_\_\_\_  
 ELEV. \_\_\_\_\_

FOOTAGE		DESCRIPTION	CORE				
FROM	TO		SPL. NO.	FROM	TO	WIDTH	GRADE
395.0	444.0	The same. Locally a few bands of f. grained sericitic qte.					
444.0	514.0	The same.					
514.0	537.0	The same - qte. is getting finer grained.					
E N D							
		End of Hole HT. 537 FEET.					
		Core logged by G. J. Westner.					

Shakespeare Twp.  
 CLAIM NO. 133409  
 STARTED October 2, 1968  
 COMPLETED October 12, 1968

BROULAN REEF MINES LIMITED  
 HOLE NO. BSU #8  
 PROPERTY \_\_\_\_\_

DIP - 85° BEARING N 155° E LENGTH 733 ft.  
 LAT. 100' S  
 DEP. 2400 W  
 ELEV. 110.0 feet above datum

FOOTAGE		DESCRIPTION	DIP TEST	CORE				
FROM	TO			SPL NO.	FROM	TO	WIDTH	GRADE
0	8.0	Casing	100'/83°					
8.0	386.0	Feldspathic member of Lower Mississagi Formation	200'/83°					
		8-56½ Impure quartz with graywacke - a few sections of white sugary quartz.	300'/83°					
		56½-65 Graywacke.	400'/83°					
		65-96 Quartz, fine grained, pink.	500'/81½					
		96-114 Graywacke.	600'/88½					
		114-147 Quartz, fine grained, pink, feldspathic.	700'/---					
		147-154 Graywacke.	unreliable test.					
		154-176 Quartz, white & pink, feldspathic.						
		176-200 Quartz, with impure arcose sections.						
		200-294 Quartz, white and pink, feldspathic. Locally a few coarse arcose sections.						
		294-308 as above.						
		308-312 Mudstone conglomerate with angular grains up to 1/3".						

BROULAN REEF MINES LIMITED

DIP

BEARING

SHEET II

LENGTH

STARTED \_\_\_\_\_  
COMPLETED \_\_\_\_\_

HOLE NO. BSU #8  
PROPERTY \_\_\_\_\_

LAT. \_\_\_\_\_

DEP. \_\_\_\_\_

ELEV. \_\_\_\_\_

FOOTAGE		DESCRIPTION	CORE				
FROM	TO		SPL NO.	FROM	TO	WIDTH	GRADE
386.0	707.0	312-361 Quartz, white and pink, feldspathic. Locally impure and arcose.					
		361-386 Pink and white, feldspathic quartz.					
		Sericitic member of Lower Mississagi Formation.					
		<u>386-431</u> Medium grained sericitic quartz with a few coarser sections.					
		<u>431-555</u> Gray impure quartz, sericitic, contains a few feldspathic, sugary sections as well as some arcose. Gradual increase in coarseness. Odd pebble bands and pebble concentrations.					
		<u>555-696</u> Gray, medium grained to coarse grained sericitic quartz with odd small pebbles and a few conglomeratic sections.					
		615-616½ Conglomeratic quartz.					
		622-623 " ; 2 - 3 X BG.		4716	622	623	1.0'
624-625½ "							
683.....		2" pebble band, small pebbles.					

BROULAN REEF MINES LIMITED

DIP

BEARING

LENGTH

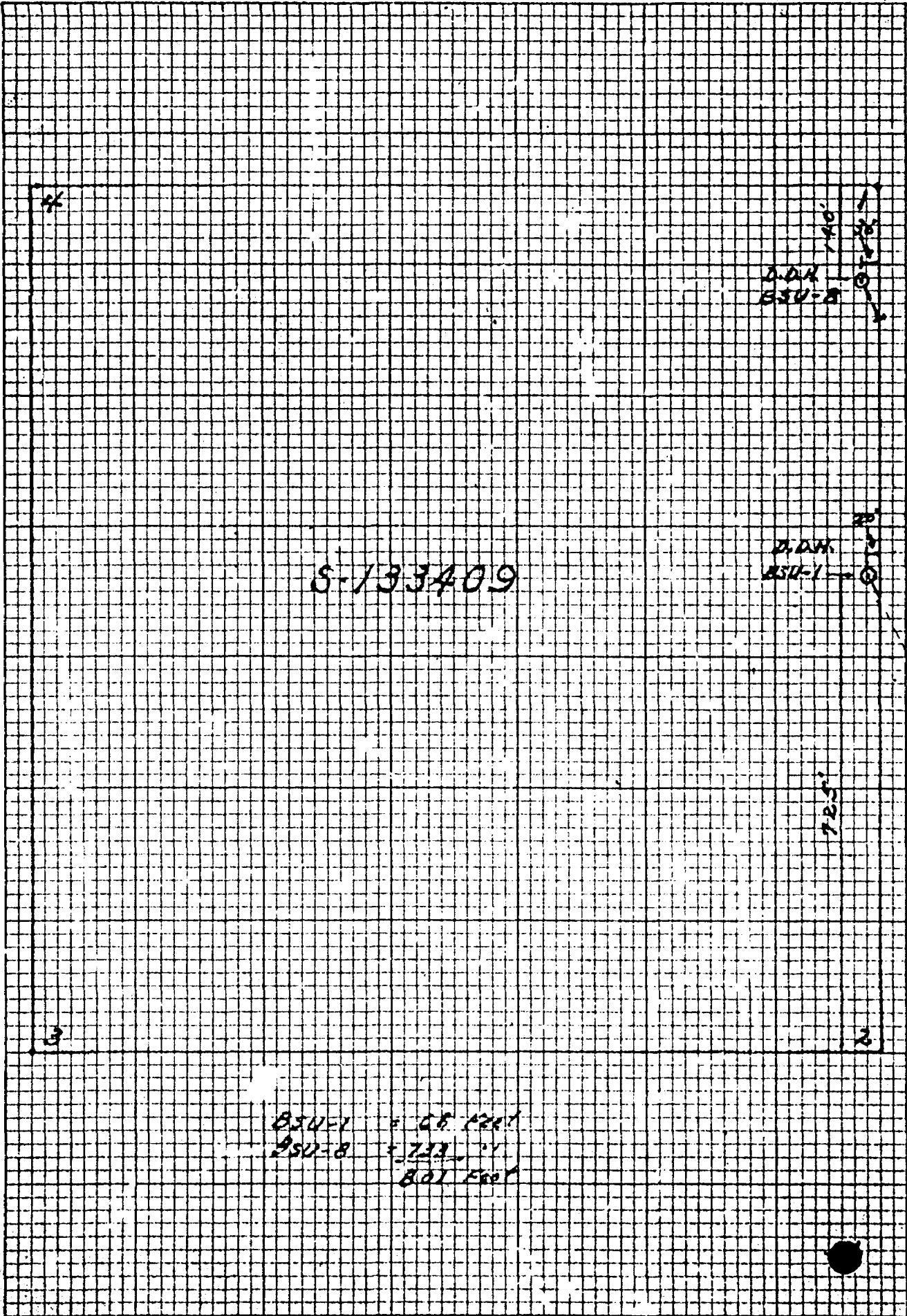
STARTED \_\_\_\_\_  
COMPLETED \_\_\_\_\_

HOLE NO. BSU #8  
PROPERTY \_\_\_\_\_

LAT. \_\_\_\_\_  
DEP. \_\_\_\_\_  
ELEV. \_\_\_\_\_

FOOTAGE		DESCRIPTION	CORE				
FROM	TO		SPL. NO.	FROM	TO	WIDTH	GRADE
		689'... 1" pebble band; 1" pebbles. 694'... 2" " ;					
		696-708 Quartz pebble conglomerate; matrix sericitic and impure towards bottom. 1"-2" pebbles. Sulphide mineralization poor but increases to fair towards bottom. Some radioactivity. 1½ - 2 X BG.	4717 4718 4719 4720	696 699 702 705	699 702 705 708	3.0' 3.0' 3.0' 3.0'	
708	733	Basement Volcanics.					
		END OF HOLE AT 733'.					
		Core logged by: G. J. Westner.					

K&E 1/2 X 10 INCHES  
K&E 10 X 10 TO THE INCH  
KENNETH & EBERLE CO.  
NEW HAVEN, CT 06510



S-133409

D.D.M.  
BSU-8  
1.40

D.D.M.  
BSU-1  
7.25

BSU-1 = 66 FEET  
BSU-8 = 7.25 FEET  
801 FEET

A

B

C

D



Shakespeare Twp.  
 CLAIM NO. 133411  
 STARTED October 7, 1968  
 COMPLETED October 30, 1968

BROULAN REEF MINES LIMITED

HOLE NO. B.S.U. 19  
 PROPERTY \_\_\_\_\_

DIP - 85° BEARING N 155° E LENGTH 1,411 ft  
 LAT. 42° S  
 DEP. Line 8 / 00 E  
 ELEV. 94' above datum

FOOTAGE		DESCRIPTION	DIP TEST	CORE				
FROM	TO			SPL NO.	FROM	TO	WIDTH	GRADE
0.0	1.0	Casing	100' / 84½					
1.0	51.0	Impure qte. with some argillite bands. Qtz. veinlets and imbibations of vein quartz sulphides from 35-49 ft.	200' / 83° 300 / 80°					
51.0	173.0	Whitish-gray quartzite, in part impure. Veinlets & imbibations as above. Dissem. sulphides.	400 / 82° 500 / 82 3/4					
173.0	196.0	Quartzite med. grained gray, with sections of argillite. Some quartz imbibations & quartz stringers. Dissem. sulphides.	600 / 83 1/2 700 / 82 3/4 800 / 81 1/2 900 / 83°					
196.0	220.0	The same, qte. less impure.	1000 / 82 1/2 1100 / 82 1/2					
220.0	269.0	Impure argillaceous qte. with vein stringers & sulphides.	1200 / 80° 1300 / 83° 1400 / 80 1/2					
269.0	298.0	Argillite with quartz stringers and imbibations. Sulphides locally very strong (10% - 20%)						
298.0	372.0	Impure quartzite with argillaceous sections; quartz veinlets and imbibations; sulphides as above.						
372.0	1090.0	Gabbro dyke. Very likely doubled by thrust faulting. Location of fault in hole questionable. FW - contact 45°-50° to core axis.						

BROULAN REEF LINES LIMITED

DIP

BEARING

LENGTH

LAT.

DEP.

ELEV.

STARTED \_\_\_\_\_  
COMPLETED \_\_\_\_\_

HOLE NO. B.S.U. #9  
PROPERTY \_\_\_\_\_

FOOTAGE		DESCRIPTION	CORE				
FROM	TO		SPL NO.	FROM	TO	WIDTH	GRADE
1090.0	1128.0	Impure argill. quartzite; vein Qtz. stringers and imbibations. Poor and sporadic sulphides.					
1128.0	1167.0	The same. Locally some sulphides (1148-1150).					
1167.0	1216.0	Gabbro dyke. 60-70° to core axis.					
1216.0	1232.0	Contact area of dyke - greywacke - argillite with obscure dyke material.					
1232.0	1276.0	Banded tuff with a little argillite - greywacke.					
1276.0	1285.0	Dyke.					
1285.0	1306.0	Argillite - greywacke and some tuff. Contact gradual, approximately at 1,300 ft.					
1306.0	1330.0	Banded basement tuff.					
1330.0	1411.0	Gabbro with lesser inclusions of basement tuff (?).					
		END OF HOLE AT 1,411.0 FEET					
		Core logged by: G. J. Westner.					

BROULAN REEF MINES LIMITED

DIP - 85° BEARING N 155° E LENGTH 1162

Shakespeare Twp.

LAT. - 380 N

CLAIM NO. 133411

STARTED October 15, 1968

HOLE NO. B.S.U.#10

DEP. Line 4 / CO E

COMPLETED November 2, 1968

PROPERTY

ELEV. 38.0 ft. above datum

TRO-PARI SURVEY

FOOTAGE		DESCRIPTION	DIP TEST	DIP AZ.		CORE		GRADE	
FROM	TO			DIP	AZ.	TO	WIDTH		
0.0	4.0	Casing	100' / 82½						
4.0	1162½	Argillite-greywacke belonging to Middle Mississagi Formation. Hole stopped at 1,162½ ft. after Tro-pari survey showed that it turned off and cannot cut across formation.	200' / 84½ 300' / 84½ 400' / 82' 500' / 83½ 600' / 81½ 700' / 79° 800' / 77° 900' / 70½ 1000' / 75° 1100' / 71°	85° 85° 83° 79° 74°	168° 215° 250° 223° 273°				
		END OF HOLE 1,162½ FEET							
		Core logged by: G. J. Westner							

BROULAN REEF MINES LIMITED

Shakespeare Twp.

CLAIM NO. 133411

STARTED November 1, 1968

COMPLETED November 3, 1968

HOLE NO. SC-1

PROPERTY (Deepening hole from 771' to 935')

DIP - 60°

BEARING N 164° E LENGTH 935'

LAT. \_\_\_\_\_

DEP. \_\_\_\_\_

ELEV. \_\_\_\_\_

TROPARY CHECK

FOOTAGE		DESCRIPTION	DIP TEST	Dip True Az.		CORE		GRADE	
FROM	TO			XSEKNEK	XFROMK	TO	WIDTH		
0.0	12.0	Casing	110/56°	-	-				
12.0	380.0	Argillite - Greywacke of Middle Mississagi Formation	200/55°	56°	N169°E				
380.0	795½	Feldspathic member of Lower Mississagi Formation Details: 380-550 Feldspathic qte with a few argillite bands 550-574 Argillaceous qte. Probable fault in silicified zone at approximately 560' 574-621 Impure feldspathic qte. 621-644 Banded argillite and some qte after 637 644-667 Feldspathic qte. 667-692 Sericitic qte with some feldspathic parts. A few obscure pebbles in sericitic section. 692-715 The same. 715-795½ Feldspathic qte. <u>Note:</u> In the core section from 560' to 733' samples have been taken last year to check on sulphides in parts showing quartz stringers & quartz imbibations. For details refer to old Log.	300/53½° 400/48° 500/44° 600/41½° 700/38° 800/35° 900/33°	- 52° - 45° - 37° -	- N170°E - N167°E - N165½E -				
795½	885½	Sericitic member of Lower Mississagi Formation quartzite, greenish-grey sericitic medium to coarse grained. Odd scattered 1/3" - 1/2" pebbles. A few 1" pebbles and one 2" pebble in the lowest 5 ft. of core. A few specks of disseminated pyrite.							
885½	935.0	Basement Volcanics (banded tuff). Contact about 70° to core axis. R.A. NIL. END OF HOLE at 935 FEET. Core logged by: G. J. Westner.							



BROULAN REEF MINES LIMITED

S.C. 1  
Sheet # 1

CLAIM NO. S-133411

ASSESSMENT GROUP NO. \_\_\_\_\_

DIP - 60°

STARTED - Oct. 13, 1967

HOLE NO. SC # 1

BEARING S-20°E

COMPLETED \_\_\_\_\_

PROPERTY SHAKESPEARE COPPER

LENGTH \_\_\_\_\_

LAT. 357'-N Baseline

DEP. 4+16E

ELEV. 10,036

FOOTAGE		DESCRIPTION	Dip Test	CORE					
FROM	TO			SPL NO.	FROM	TO	WIDTH	Gr.	Th.
0.0	12.0	Casing							
12.0	26.5	DIABASE: med.gr.-dark grey to black colour fractured strongly magnetic. 12.0-16.0 oxide or slip faces 20.6-26.5 becoming very fine gr. 26.5 contact @ 20° to core axis.	100'-56° 200'-55° 300'-53½° 400'-48° 500'-44° 600'-41½°						
26.5	41.3	QUARTZITE: fine gr. light grey colour-fractured-mr. greywacke bands @ 35° to 45° to core axis - very minor py. 27.8-29.4 gw band upper contact 85° - lower contact 60° to core axis. 41.3 contact 60° to core axis.							
41.3	347.9	GREYWACKE fine-med.gr.dk. grey to black colour sections shrd. ll(?) to bedding - minor py. generally quartzitic some argillaceous sections. 41.7 2" qtzite. 41.3-50.0 bedding 60° to core axis. Patch-V.W.K.Ra							
45.5	50.0-91.5	bedding gradually flattening to 20° to core axis.							
87.0-100.0	125.0	few qtz.-carb. and calcite stringers. bedding 30° to core axis.							
178.0-271.0	167.7-167.8	becomes more pyritized smear px. on fracture face - few specks c.p.							
181.0-182.4	190.4-192.0	w.k.py. minor c.p. 1-1/8" streak c.p. wk.py & pyrr. - scattered specks.							
199.5-202.5	200.3-201.4	quartzitic fine streaks c.p. 40% vein in qtz. 10% massive c.p.							
202.5-223.6	215.8-216.7	bedding 15° to 30° to axis of core-wkly.shrd to bedding - w.k.fine py. and c.p. scattered along cove.							
217.3	223.6-271.0	½" qtz. veinlet 5° to core aix. med.bleb c.p. smear of galena with py. on slip face. becoming more massive-bedding 15° to 30° to core axis-occs.specks-py, pyrr & cp.							
257.8-258.4	271.0-347.9	band quartzite-lower contact 30° to core axis. Argillaceous-sections wkly.shrd.pyritized my.qtz. carb.veinlets.							
279.5		½" qtz. veinlet 35° to core axis. w.k.cp							

**DUPLICATE COPY  
POOR QUALITY ORIGINAL  
TO FOLLOW**

218	181.0	182.4	1.4'
219	190.4	192.0	1.6'
220	199.5	202.5	3.0'

BROULAN REEF MINES LIMITED

SHEET 2

CLAIM NO. \_\_\_\_\_ ASSESSMENT GROUP NO. \_\_\_\_\_ DIP \_\_\_\_\_  
 STARTED \_\_\_\_\_ HOLE NO. S.C. # 1 BEARING \_\_\_\_\_ LAT. \_\_\_\_\_  
 COMPLETED \_\_\_\_\_ PROPERTY \_\_\_\_\_ LENGTH \_\_\_\_\_ DEP. \_\_\_\_\_  
 ELEV. \_\_\_\_\_

FOOTAGE		DESCRIPTION	Dip Test	CORE						
FROM	TO			SPL NO.	FROM	TO	WIDTH	Gr.	Th.	Yc.
281.4-282.0		Graphitic band-vuggy 20% py.-contacts 50° to core axis.								
286.4-290.3		qtz. veinlets @20° to 50° to core axis. med.streaks py. minor scattered cp.								
331.4-331.7		shr.py.in stringers @35° to bedding								
332.7-336.0		graphitic zone-vuggy 20% massive py. in band @ 30° to core aixs. minor cp								
340.6-345.8		bedding @ 45° to core axis. minor py. RA 1.5XBG								
345.8-347.9		Contact zone-few scattered qtz.pebbles in gw matrix RA 2XB.G.								
347.9-356.1		347.9 indefinite contact appears to be flat. QUTZ pebble congl. med.gr.dk grey to black gw matrix mx.rice to pea size white qtz. pebbles v.minor py. RA 2XBG. 349.6-353.1 gw fine gr. bedding 25° to core axis upper contact 44° lower @ 32° to core aixs. 353.1-356.1 qtz. peb; congl. RA 1.5xBG								
356.1-371.3		GREYWACKE fine gr. dk. grey to black colour sections bedded 50° to core axis-wkly. shrd. 11° to bedding my qtzite bands and qtz. veinlets-platty py. on slip faces RA 1.5X BG								
371.3-374.5		QTZ. peb.congl.as above - bands gw upto 1/2" wide @ 50° to core axis minor py.Ra 1.5X BG								
374.5-380.9		GREYWACKE as above, 376.8-376.9 band qtzite wk py.Ra 1.5XBg								
380.9-382.5		QTZ.pebble congl. as above- pebble upto 3/8" V.minor py. VWK RA								
382.5-434.0		QTZITE-fine gr.light grey colour-fractured. scattered grains feldspar along core wk.platy py. on fracture faces v.minor py.cp. 387.5 - 1/2" qtz. veinlet @ 20° to core axis. 382.5-394.0 fine gr. pure qtzite. 394.0-408.0 med. cse gr. dk. grey colour my.qtz. carb. stringers & veinlets @ 15° to 20° to core axis. minor py. odd specks cp.								
408.0 - 418.9		grey colour-fractured-sections bedded @ 10 to 25° to core axis. minor platy py. occs. speck cp								
418.9 - 423.9		qtzite wk.py.scattered streaks cp								
423.0 - 423.9		1/2" qtz. veinlet @ 10° to core aixs								
423.9 - 432.2		as above - minor py. v. minor py.								

**DUPLICATE COPY  
 POOR QUALITY ORIGINAL  
 TO FOLLOW**

BROULAN REEF MINES LIMITED

SHEET 3

CLAIM NO. \_\_\_\_\_

ASSESSMENT GROUP NO. \_\_\_\_\_

DIP \_\_\_\_\_

STARTED \_\_\_\_\_

HOLE NO. S.C. # 1 \_\_\_\_\_

BEARING \_\_\_\_\_

COMPLETED \_\_\_\_\_

PROPERTY \_\_\_\_\_

LENGTH \_\_\_\_\_

LAT. \_\_\_\_\_

DEP. \_\_\_\_\_

ELEV. \_\_\_\_\_

FOOTAGE		DESCRIPTION	Dip Test	CORE						
FROM	TO			SPL NO.	FROM	TO	WIDTH	Gr.	Th.	Fe.
432.2	434.0	6" band str.cp.p wk. fine dissem. cp								
434.0	448.4	fine-med. gr. dk grey colour occ.narrow bands greywacke sections bedded @ 20 to 25° core axis. wkly shrd. to bedding. 440.1-440.3 med. py and cp								
443.4	445.2	Feldspathic. 446.2-446.4 qtz. veinlet 10 to 20° C/A-3/4" bleb cp								
446.7	465.3	med.gr.grey colour feldspathic.								
465.3	474.6	impure med.gr. platy py. on fracture faces minor cp sections wkly shrd few qtz. veinlets @ 30° to core axis								
474.6	485.0	feldspathic-narrow bands qw wk platy py. minor pyrr. and cp along core.								
485.0	514.0	impure qtzite-fine.med.gr. section bedded @ 30° to core axis few qtz.veinlets to bedding - scattered feldspar grains along core occ narrow bands qw. v. minor py. 485.0 contact @ 30°l								
514.0	519.7	GREYWACKE-med.gr.dk grey colour bedding @ 30° to core axis shrd.ll to bedding minor platy py.								
517.0	519.7	few badns qtzite @ 30° to core axis few scattered specks cp.								
519.7	546.9	QUARTZITE-feldspathic-med. gr.grey colour some dk. grey sections few narrow bands gw - few qtz. carb streaks @ 45° to core axis. minor py.platy and scattered fine py.								
539.4		smear at cp. on fracture face								
546.9		contact @ 35° to core axis.								
546.9	559.2	GREYWACKE-fine-med.gr. dk colour bedding @ 15 to 50° to core axis-narrow qtz.veinlets ll to bedding shrd. 551.3-553.5-congl. cse.gr. gw matrix my rice to pea size qtz. pebbles minor py.&cp / 559.2 contact @ 5°l								
559.2	564.2	QUARTZITE-fine gr. dk grey colour fractured sections bedded @ 18°l to core axis. few qtz. stringers ll to bedding - minor py.-minor scattered cp with cp blebs @ 562.5-563.0	223	559.2	564.2	5.0'				
564.2	568.3	Greywacke - fine.med.gr. dk grey colour bedding @ 30°l to core axis-my.narrow qtzite bands-minor py.fine dissem cp and cp streaks ll to bedding.	224	564.2	568.3	4.1'				
568.3	570.8	quartzite zone- as above - wk. py and cp	225	568.3	570.8	2.5'				
570.8	771.0	QUARTZITE; 570.8-574.0 impure bands qw.@ 20° to core axis wk. py -wk. med.cp along core blebs cp @ 571.5	226	570.8	574.0	3.2'				

DUPLICATE COPY  
POOR QUALITY ORIGINAL  
TO FOLLOW



BROULAN REEF MINES LIMITED

SHEET

CLAIM NO. \_\_\_\_\_

ASSESSMENT GROUP NO. \_\_\_\_\_

DIP \_\_\_\_\_

STARTED \_\_\_\_\_

HOLE NO. S.C. # 1

BEARING \_\_\_\_\_

LAT. \_\_\_\_\_

COMPLETED \_\_\_\_\_

PROPERTY \_\_\_\_\_

LENGTH \_\_\_\_\_

DEP. \_\_\_\_\_

ELEV. \_\_\_\_\_

FOOTAGE		DESCRIPTION	Dip Test	CORE						
FROM	TO			SPL NO.	FROM	TO	WIDTH	Un.	Th.	Zc.
574.0	- 584.0	as above - minor py. pyrr & cp								
584.0	- 589.0	as above v. wk cp		227	584.0	587.0	3.0			
589.0	- 590.4	as above wk. cp.		228	587.0	590.4	3.4			
590.4	- 592.4	white qtz. vein-contacts @ 20° to core axis - minor py.pyrr								
592.4	- 602.1	impure qtzite bedding @ 40° to core axis-minor py. few specks cp along core. 596.5-597.2 qtz vein @ 10° to core axis. 602.1-606.8 50% impure qtzite-50% qtz.veinlets @ 40° to core axis. med.py.pyrr.cp.		229	602.1	607.8	4.7			
606.8	11.2	impure qtzite-my-marrow qtz. veinlets 30-40° to core axis wk.py.pyrr.cp. 611.2-616.2 as above.		230	606.8	611.2	4.5			
616.2	- 621.0	interbedded qtzite and gw-wk.py.pyrr.v.wk cp with few small blebs cp along core. 621.0-625.0 As above - wk.py and cp.		231	611.2	616.2	5.0			
625.0	- 628.0	as above v.wk. py. pyrr and cp.		233	621.0	625.0	4.0			
628.0	- 631.0	as above wk. py and cp.		234	625.0	628.0	3.0			
631.0	- 633.9	fine gr. light grey pure qtzite. qtz.veinlet at 5° to core axis. wk. py and cp.		235	628.0	631.0	3.0			
633.9	- 636.0	as above plufy py. minor cp		236	631.0	633.9	3.9			
636.0	- 641.0	grey qtzite-few qtzite strings @ 40° to core axis. wk. py. wk.med. cp with few blebs cp		237	633.9	636.0	2.1			
641.0	- 643.3	as above. wk. py. wk.med cp		238	636.0	641.0	5.0			
643.3	- 649.9	grey qtzite translucent - no min.		239	641.0	643.3	2.3			
649.9	- 652.2	Narrow interbedded bands gw @ 42° to core axis-qtz.carb. streaks ll to bed. ding. few specks py.								
652.2	- 655.3	grading from light grey to dk grey colour-bedding @ 40° to core axis wk med. py. pyrr. wk cp		240	652.2	655.3	3.1			
655.3	- 695.0	impure narrow bands gw bedding @ 40° to core axis. sections wkly shrd. ll. to bedding-few qtz. carb-streaks wk. plff py. on bedding faces and wk-fine py. minor pyrr. few specks cp. smear cp								
681.8	687.0	1/32" streak cp few fine specks cp. 695.0-704.0 as above - bedding steepening to 50° l to core axis.								
704.0	- 708.0	qtzite interbedded gw @ 60° to core axis - few qtz. cb. streaks wk. py. pyrr. minor cp on bedding faces.		241	704.0	708.0	4.0			
708.0	- 710.0	as above- wk.cp shrd. wk. py. pyrr. cp		242	708.0	710.0	2.0			
710.0	- 714.1	as above. med. py-pyrr. wk. med. cp.		243	710.0	714.1	4.1			
714.1	- 717.6	light grey qtzite few dk. bands wk. py and cp		244	714.1	717.6	3.5			

CLAIM NO. \_\_\_\_\_

ASSESSMENT GROUP NO. \_\_\_\_\_

DIP \_\_\_\_\_

STARTED \_\_\_\_\_

HOLE NO. \_\_\_\_\_ S.C.# 1 \_\_\_\_\_

BEARING \_\_\_\_\_

LAT. \_\_\_\_\_

COMPLETED \_\_\_\_\_

PROPERTY \_\_\_\_\_

LENGTH \_\_\_\_\_

DEP. \_\_\_\_\_

ELEV. \_\_\_\_\_

FOOTAGE		DESCRIPTION	Dip Test	CORE						
FROM	TO			SPL NO.	FROM	TO	WIDTH	Us.	Th.	Zs.
717.6	- 720.4	as above - bleb cp @ 717.9		245	717.6	720.4	2.8			
720.4	- 722.1	" " wk. med. py and cp.		246	720.4	722.1	1.7			
722.1	- 726.3	" " str. py. pyrr. 1" and 1/2" bands pyrr. @ 20° to core axis. med. cp.		247	722.1	726.3	4.2			
726.3	- 730.0	interbedded qtz. and gw. bedding @ 42° to core axis. wk. py & pyrr. - minor cp		248	726.3	730.0	3.7			
730.0	- 732.0	as above - minor py.								
732.0	- 771.0	feldspathic qtzite - light grey colour - sections with a buff colour tint few impure sdctions - dk. grey colour bedding @ 40° to core axis. wkly shrd. to bedding. few narrow qtz. veinlets v. minor fine py.								

END OF HOLE AT 771 FEET

**DUPLICATE COPY  
POOR QUALITY ORIGINAL  
TO FOLLOW**



























BROULAN REEF MINES LIMITED

SHEET 1

CLAIM NO. S-133411

ASSESSMENT GROUP NO. S.C. # 2 DIP 00 60°

STARTED October 23, 1969  
COMPLETED

HOLE NO. S.C. # 2  
PROPERTY SHAKESPEARE COPPER

BEARING S-40°E

LAT. 4+15N

DEP. 0+20E

ELEV. 10,015

FOOTAGE		DESCRIPTION	Dip Test	CORE			
FROM	TO			SPL NO.	FROM	TO	WIDTH
0.0	12.0	Casing Wedge @ 5' - casing drilled into 12'	100'-50°				
12.0	414.1	GREYWACKE-fine med.gr.grey to dk. grey colour. my. qtzite bands and sections - beddings from 20° to 50° to core axis-sections carrying plates and dissem. py-min. pyrr. v.minor specks cp. badly fractured-my.oxid.zones	200'-48° 300'-44° 400'-42° 500'-37° 600'-35½° 700'-33½°				
12.0	39.0	sections bedded 25° to 40° to core axis wkly shrd. bedding minor py. & pyrr. along core.					
60.5	82.3	becoming very qtzitic well bedded @ 20° few qtz. streaks ll to bedding 60.5 contd.@20° to core axis.					
41.1	60.5	cross bedding					
71.4	75.9	Cross bedding & ripple marks shrd.minor py.					
87.3	108.5	qtzitic massive - sections bedded @ 45° to core axis minor platy py.					
108.5	144.5	bedding 15° to 40° to axis core - shrd. to bedding some sections corss bedded-minor py & pyrr.					
155.7		¼" qtz. veinlet @ 60° to core axis					
198.0	204.0	bedding steepening to 40°-50° to core axis. med. shrd wk py.&pyrr. odd specks cp on slip faces					
204.0	248.0	becoming massive interbedded qtzite and argillaceous bands bedding @ 25 to 40° to core axis. minor py & pyrr. odd specks cp along core					
230.6	230.8	qtz. veinlets 42° to core axis.					
235.6		¼" qtz. veinlet @32° to core axis - specks py & cp.					
246.4		small bleb cp and few fine specks cp					
249.9		¼" qtz. veinlet @ 20° to core axis					
248.0	250.2	med. gr. bedding @ 59° to core axis my. qtz. carb. streaks bedding - v. minor min.					
250.2	258.3	qtzitic bedding @ 35° to core axis wk. platf py.					
250.3	264.3	my. qtz.carb. streaks-bedding @ 39° to core axis shrd ll to bedding. near lower contact.					
264.3	272.0	fine gr. qtzitic sections bedded @ 30° to 45° to core axis - minor platff py.					

DUPLICATE COPY  
POOR QUALITY ORIGINAL  
TO FOLLOW















BROULAN REEF MINES LIMITED

SHEET No. 6

#SC-2

CLAIM NO. \_\_\_\_\_

ASSESSMENT GROUP NO. \_\_\_\_\_

DIP \_\_\_\_\_

STARTED \_\_\_\_\_  
COMPLETED \_\_\_\_\_

HOLE NO. SC-2  
PROPERTY SHAKESPEAR  
COPPER

BEARING \_\_\_\_\_

LENGTH \_\_\_\_\_

LAT. \_\_\_\_\_

DEP. \_\_\_\_\_

ELEV. \_\_\_\_\_

FOOTAGE		DESCRIPTION	Dip Test	CORE						
FROM	TO			SPL NO.	FROM	TO	WIDTH	Ur.	Th.	Yt.
		456.6-457.4 band gwc - contacts @ 55°L;								
		467.8 1/2" Qtz veinlet @ 60°L;								
		469.0-521.6 Impure Qtzite - my narrow gwc bands - dk color; bed @ 45°L - 60°L wk. med sh. d 11° to bedding - wk platy & scattered py. minor pyr. oec. speckled								
		484.9-485.2 - 2-1" Qtz veinlets @ 55°L;								
		486.7 - 1/4" Qtz str. @ 57°L to core axis								
		487.3-487.6 - Qtz veinlet @ 30° & 11° to core axis.								
		488.3 - 1/2" Qtz veinlet @ 55°L; 2" streaks orth. fold on contacts (pyrometite)?; 490.7 med. CP pyrr. on fracture faces; 492.1 - 1/2" Qtz veinlet @ 42°L; wk. pyr; 500.1 - 1/4" Qtz veinlet @ 35°L; 500.3-520.5 Qtz veinlet @ 60°L, med py. str. CP.								
		516.0 - 520.4 same as above few specks CP.								
		520.4-524.6 " " " v. minor py. pyr. & CP.								
				4509	521.0	525.2	4.2			



BROULAN REEF MINES LIMITED

SHEET No 8

# SC-2

CLAIM NO. \_\_\_\_\_

ASSESSMENT GROUP NO. \_\_\_\_\_

DIP \_\_\_\_\_

LAT. \_\_\_\_\_

STARTED \_\_\_\_\_

HOLE NO. \_\_\_\_\_

BEARING \_\_\_\_\_

DEP. \_\_\_\_\_

COMPLETED \_\_\_\_\_

PROPERTY \_\_\_\_\_

LENGTH \_\_\_\_\_

ELEV. \_\_\_\_\_

FOOTAGE		DESCRIPTION	Dip Test	CORE						
FROM	TO			SPL NO.	FROM	TO	WIDTH	Ur.	Th.	Zt.
		582.5 - 588.6 - Qtzite - 50% light grey pure bands, 50% dk. impure bands, wk. py. & pyr. - v. ex. fine cp.		4520	585.2	588.6	3.4			
		588.6 - 593.8 - Qtzite - light grey - beds @ 45° L, str. py. & pyr. med. cp. in strks 11° bedding.		4521	588.6	593.8	5.2			
		593.8 - 609.6 - Qtzite - fine gr. - light grey to white color, bedding @ 59° L; v. minor min.								
		609.6 - 614.7 - Qtzite - light grey color. wk. finely disc. py. pyr. & cp.		4522	609.6	614.7	5.1			
		614.7 - 619.5 - Qtzite - dk. color. bedded @ 60° L; v. wk. finely disc. py. pyr. & cp.		4523	614.7	619.5	4.8			
		619.5 - 624.5 - as above - v. wk. py. pyr. & cp.		4524	619.5	624.5	5.0			
		624.5 - 637.7 - Qtzite - grey to dk grey color, bed @ 60° L; occ narrow bands wk. py. pyr. in strks - 11° to bed. wkly. shrd. - v. minor speck cp.								
		637.7 - 641.9 - Qtzite - banded - light & dk. grey color; bed @ 60° - 70° - wk. med py. & pyr. wk. to med. disc. & strky. cp.		4525	637.7	641.9	4.2			





BROULAN REEF MINES LIMITED

SHEET No 10  
# SC-2

CLAIM NO. \_\_\_\_\_

ASSESSMENT GROUP NO. \_\_\_\_\_

DIP \_\_\_\_\_

LAT. \_\_\_\_\_

STARTED \_\_\_\_\_

HOLE NO. SC-2

BEARING \_\_\_\_\_

DEP. \_\_\_\_\_

COMPLETED \_\_\_\_\_

PROPERTY SHARPSPEAR  
COPPER

LENGTH \_\_\_\_\_

ELEV. \_\_\_\_\_

FOOTAGE		DESCRIPTION	Dip Test	CORE						
FROM	TO			SPL NO.	FROM	TO	WIDTH	Ur.	Th.	It.
		light grey to buff color - highly feldspathic - some fracturing, minor min.								
713.4	714.2	Gabbro - med grey. dk. color; badly broken up; cont @ 65° L.								
714.2	786.0	Quartzite - Feldspathic; med gr; grey; dark bands, bed @ 80° L fractured. wk. platy py. wk. ppyr; 715.1 - 1/4" str. gabbro @ 42° L; 719.5 becoming darker, grey - wkly sh'd. 747.9 - 752.9 - as above - v. wk. fine disc. py. ppyr. & c.p. 752.9 - med esc. gr; Feld - grey color - darker sections; some section wkly sh'd; wk platy & fine disc. py. wk. ppyr. - minor specks c.p. 743.5 - 744.6 - as above, med str. py. 744.6 - 786.0 - med. esc. gr.; grey to dk. Feld.; sections wkly sh'd; few 1/4" str. @ 60°; minor py. ppyr. - occ. specks fine c.p.								
				4535	747.9	752.9	510			
	786.0	End of hole.								

J.E. Beardley

3 - D.M. Nickel Tests - Nil

BROULAN REEF MINES LIMITED

SHEET 1

CLAIM NO. \_\_\_\_\_ ASSESSMENT GROUP NO. \_\_\_\_\_ DIP 60°  
 STARTED Nov. 3, 1967 HOLE NO. SC # 3 BEARING South LAT. I+85N  
 COMPLETED \_\_\_\_\_ PROPERTY SHAKESPEARE COPPER LENGTH 394' DEP. I+85E  
 ELEV. 10,109

FOOTAGE		DESCRIPTION	Dip Test	CORE						
FROM	TO			SPL NO.	FROM	TO	WIDTH	Gr.	Th.	Zc.
0.0	9.0	Casing: ledge @ 5.0' drill casing to 9.0'	100'	-	57 1/2°					
9.0	55.0	Interbedded greywacke & impure qtzite med. grey in colour fine grain, shrd bedding @ 15° to 20°l to core axis; platy py. & pyrr. along bedding face. x-bedding @ 25° to core axis; very few minor specks of cp. qtz. veinlet 16.5 1/8" @ 10° to core axis; gwke bands @ 52.8-55.0 - 25°L	200'	-	55 1/2°					
			300'	-	51°					
			394'	-	58°					
55.0	64.0	GREYWACKE & conglomerate 2A? med. grey. med.grain. rice size to 2" pebbles. upper contact @ 25°L; lower @ 50°L. some minor pyrr. py. & diss. c.a. v.minor galena along fractures 58.5-59.3 - qtz. veinlet v.minor c.a.								
64.0	65.7	QUARTZITE.med. tolight grey in colour, med. grain. contact @ 30°L								
65.7	104.6	INTERBEDDED greywacke, med. to fine grain, med. grey, highly sheared ll° to bedding; bedding @ 25°L to 50°L to core axis. few scattered pebbles rice size to 1/2" 78.8-79.6 qtz. veinlets @ 20°L 82.0-85.3 highly sheared @ 25°-40°L 91.0-93.8 " " @ 50°L 95.5-104.5 " " " platy py. on bed face 101.9 1/2" qtz. str. @ 35°L								
104.6	130.9	QUARTZITE, very impure med grey in colour, med. grain wkly shrd' to bedding @ 35°L; interbedded greywacke sections; 112.1-114.0 conglomerate band. rice size to pea size, qtz. pebbles; v.minor py. pyrr & cp 120.5-121.6 gwke shrd ll to bed @ 55°L 126.1-126.4 as above bedding @ 50°L 129.2-130.3 as above " " 134.3-135.4 as above " " 139.0-140.8 conglomerate band, rice size qtz. pebbles.								
130.9	242.0	INTERBEDDED greywacke; med, to fine grain, med. grey in colour shrd to bedding @ 55°L; upper contact @ 35°L; v.wk. platy py. 142.4 broken, irreg. carb. qtz. str. 143.8-144.2 qtzite impure. 148.2-148.9 " " @ 35°L 153.3-156.0 " " few scattered rice size qz. pebbles lower contact @ 42°L;								

**DUPLICATE COPY  
 POOR QUALITY ORIGINAL  
 TO FOLLOW**

CLAIM NO. \_\_\_\_\_

ASSESSMENT GROUP NO. \_\_\_\_\_

DIP \_\_\_\_\_

STARTED \_\_\_\_\_

HOLE NO. S. C. # 3

BEARING \_\_\_\_\_

LAT. \_\_\_\_\_

COMPLETED \_\_\_\_\_

PROPERTY \_\_\_\_\_

LENGTH \_\_\_\_\_

DEP. \_\_\_\_\_

ELEV. \_\_\_\_\_

FOOT/GE		DESCRIPTION	Dip Test	CORE						
FROM	TO			SPL NO.	FROM	TO	WIDTH	Us.	Th.	To.
163.0	163.6	str.shrd 11° to bedding; qtz. str.								
163.7	164.5	(1/4" @ 35°L; 163.9-164.2 qtz. veinlet minor py; dip @ 35°L)								
		164.6-165.6 qtzite, med. grey. med. grain								
		171.0-172.0 as above. core broken up.								
		172.0 - 1" qtz. veinlet;								
		174.3-175.0 qtzite as above; 1" qtz. veinlet, minor py. pyrr & v.few specks cp. 176.5(1/4" qtz. veinlet @ 25°L								
		172.0-242.0 core broken up								
		179.3-1/4" of veinlet @ 60°L;								
		180.4-185.1 1/4" qtz. veinlets @ 40°L; v.minor py & pyrr.								
		187.1-187.9 Brecciated carb. qtz. fragments								
190.0	196.0	qtzite. med. grey med.to fine grain; 192.0-193.0 30% qtz. med. cp. & py. pyrr.; 200.5-201.0 40% qtz. str @ 40°L & minor py & pyrr.; 209.9-210.0 1/4" feldspathic str. @ 40°L; 211.1 3/4" qtz. veinlet @ 35°L;		4549	192.0	193.0	1.0			
212.7	242.0	interbedded gwke & qtzite a few widely scattered speck cp; platy py. along bed faces.								
242.0	267.6	GREYWACKE, med. grain, med. to light grey in colour, lower contact @ 50°L; bedding @ 35°L; many 1/4" qtz. str. @ 35°L; 254.0-255.0 50%qtz. @ 45°L; py. pyrr. Heavy cp.		4550	254.0	255.0	1.0			
		261.7-265.8 gwke few scattered qtz. str. minor py.pyrr.wk cp		4551	261.7	265.8	4.1			
		265.8-267.6 gwke few scattered qtz. str. minor py.pyrr. wk cp.		4552	265.8	267.6	1.8			
267.6	284.0	QUARTZITE light grey to white in colour; med. grain upper contact @ 50°L - 267.6-272.2 qtzite;v.minor py.pyrr & cp		4553	267.6	272.2	4.6			
		272.2-274.5 qtzite-med.py.pyrr & wk cp		4545	272.2	274.5	2.3			0.35
		274.5-278.0- as above, py. pyrr & med. cp		4546	274.5	278.0	3.5			0.96
		278.0-282.0 as above py.pyrr. med. to heavy cp		4547	278.0	282.0	4.0			1.80
		282.0-284.0 as above py. pyrr. v. minor wk. cp.		4548	282.0	284.0	2.0			0.10
284.0	394.0	QUARTZITE-feldspathic, light grey colour, med. grain. some small section buff colour; bedding @ 45°l; wk. shred to bed; minor qtz. str. 282.2 1" irreg. qtz. str. wk py. med. cp; 305.5-305.8 qtzite-med.py. pyrr and cp; 310.5 blebs of cp; 319.7 speck cp; 329.0, 331.0, 331.2 specks. cp; 338.5-338.6 qtz. veinlet pyrr. py & cp 341.3-341.6 qtzite & minor py & pyrr & cp.								

**DUPLICATE COPY  
POOR QUALITY ORIGINAL  
TO FOLLOW**

CLAIM NO. \_\_\_\_\_

ASSESSMENT GROUP NO. \_\_\_\_\_

DIP \_\_\_\_\_

STARTED \_\_\_\_\_

HOLE NO. S.C. 13

BEARING \_\_\_\_\_

LAT. \_\_\_\_\_

COMPLETED \_\_\_\_\_

PROPERTY \_\_\_\_\_

LENGTH \_\_\_\_\_

DEP. \_\_\_\_\_

ELEV. \_\_\_\_\_

FOOTAGE		DESCRIPTION	Dip TEST	CORE					
FROM	TO			SPL NO.	FROM	TO	WIDTH	Gr.	Th.

344.5 - cp along fractures here										
345.9-346.9 qtzite minor cp. along fractures			4554	345.9	346.0	1.0				
349.5-350.3 qtzite platy py & pyrr. med. cp			4555	349.5	350.5	1.0				
354.0-356.8 qtzite platy py & pyrr. wk. cp.			4556	354.0	356.8	2.8				
368.8-369.4 qtzite platy py & pyrr. v.wk. cp										
392.3-394.0 qtzite platy py & pyrr. v. minor wk cp along fractures.										
394.0 END OF HOLE.										

**DUPLICATE COPY  
POOR QUALITY ORIGINAL  
TO FOLLOW**









BROULAN REEF MINES LIMITED

#50-3

CLAIM NO. \_\_\_\_\_

ASSESSMENT GROUP NO. \_\_\_\_\_

DIP \_\_\_\_\_

LAT. \_\_\_\_\_

STARTED \_\_\_\_\_

HOLE NO. SC-3

BEARING \_\_\_\_\_

DEP. \_\_\_\_\_

COMPLETED \_\_\_\_\_

PROPERTY SURRESPERRE  
CRAPER

LENGTH \_\_\_\_\_

ELEV. \_\_\_\_\_

FOOTAGE		DESCRIPTION	Dip Test	CORE						
FROM	TO			SPL NO.	FROM	TO	WIDTH	Ur.	Th.	Yt.
		172.5 - 242.0 core broken up								
		179.3 1/4" of veinlet @ 20° E								
		180.4 - 185.1 1/2" of veinlets @ 10° E minor and burr								
		177.1 - 180.0 Brecciated carb. of fragments								
		190.0 - 192.0 Slate med grain, med to fine								
		grain; 192.0 - 193.0 30% of med gr. sp. burr		4549	192.0	193.0	1.0			
		200.5 - 201.0 140% of str @ 40° E; minor burr								
		209.9 - 210.1 1 1/2" "Isotactic str @ 40° E								
		211.1 1/4" of veinlet @ 20° E								
		212.7 - 242.0 Interbedded quartz & white a fine white scattered spec. of plate of elongated bars								
242.0	267.6	Grey wacke, med grain, med to light grey in color, lower contact @ 50° E; bedding @ 35° E; many 1/4" of str @ 35° E								
		246.0 - 255.0 - 50% of str @ 45° E; minor burr		4550	246.0	255.0	1.0			
		261.7 - 265.8 - 90% of scattered 9/16" str minor py, pyr, wk. cr.		4551	261.7	265.8	4.1			



























BROULAN REEF MINES LIMITED

# SC-5

Sheet 1

CLAIM NO. S-133417

ASSESSMENT GROUP NO. \_\_\_\_\_

DIP -45°

STARTED February 2, 1968

HOLE NO. S.C. #5

BEARING South

COMPLETED Feb.

PROPERTY Shakespeare Copier Mines.

LENGTH \_\_\_\_\_

LAT. 6+37S

DEP. 30+00E

ELEV. \_\_\_\_\_

FOOTAGE		DESCRIPTION	Dip Test	CORE						
FROM	TO			SPL NO.	FROM	TO	WIDTH	Ur.	Th.	Yt.
00	8.0	Casing	100-42°							
8.0	28.5	Greywacke - fine med. gr. - greyish black color - mt. hair	200-42°							
		width STRAS. Carbonate 11' to bedding - bedding @ 55°	300-41°							
		to 65° to E.H. - Strly. shd. 11' bedding - Frequent	400-39°							
		Qtz - Carb. Veinlet 5-1/4" to 1/2" wide @ 45° to 65°	500-39°							
		to core axis - no min.								
		25.6-25.7 - Qtzitic band @ 60° to E.H.								
		28.9-29.0 - Milky white Qtz. Veinlet @ 60° to E.H.								
28.5	33.8	Quartz-vein - Milky white color - cc - small patches & specks biotite mica - lower cont @ 55° to E.H. no min								
		31.0-31.4 - gw - Altered - some biotite								
33.8	54.9	Greywacke - as above								
		51.2-52.0 - Qtz. vein - as above upper cont @ 55° to E.H.								
		54.6-54.9 - gw - Qtzitic - cont @ 60° to E.H. no min								
		54.9 - contact @ 75°								
54.9	60.2	Gabbro - fine - med. gr. massive - dk. grey color - no min								

N.B. similar to lower gw. bed in D.H. S.C. #4



















BROULAN REEF MINES LIMITED

Sheet 10

CLAIM NO. 5-133417

ASSESSMENT GROUP NO. \_\_\_\_\_

DIP \_\_\_\_\_

STARTED Feb. 2, 1968  
COMPLETED Feb. 18, 1968

HOLE NO. S.C. #5  
PROPERTY Shazkespeare Copper Mines

BEARING S. 07° W  
LENGTH 1250'

LAT. \_\_\_\_\_  
DEP. \_\_\_\_\_  
ELEV. \_\_\_\_\_

FOOTAGE		DESCRIPTION	Dip Test	CORE								
FROM	TO			SPL NO.	FROM	TO	WIDTH	Ur.	Th.	Yt.		
		1131.2-1/4" Qtz. Strk. @ 55° to E.A. No min										
		1150.8-1/2" " " @ 60° to E.A. " "										
		1165.3-1/2" " " @ 25° to E.A. " "										
		1165.7-1/2" " " @ 55° to E.A. " "										
		1178.4-1179.3 - Qtz vein @ 70° to E.A. " "										
		1179.3-1179.6 - Fibrous med. gr. w. shd. @ 70° to E.A. " "										
		1179.6-11800 - Fine gr. dk. color. Alt. red. ser. shd. - 20% Qtz										
		Matrix patches & strks. @ 50° to E.A. - v. fine PY.										
		1185.5-1185.8 - Qtz vein @ 50° to E.A. No min										
		1194.5-1/4" Qtz. Strk. @ 40° to E.A. " "										
		1215.0-1250.0 - Fibrous @ 50° massive - dk. gray color										
		" violet appearance' low fine gr. & Qtz - each -										
		Strks. - general @ 40° to 60° to E.A. - minor min.										
		1227.5-3/8" Qtz. vein @ 50° to E.A. No min										
		1247.2-1/4" Qtz. Strk. @ 47° to E.A. - fine SPK EP.										
		1247.3-1/4" " " @ 62° to E.A. - 17% min										
		END of hole 1250 Feet.										

J. E. Brandy

Shakespeare Twp. BROULAN REEF MINES LIMITED  
 CLAIM NO. 133412

DIP - 70° BEARING N 155° E LENGTH 417'

STARTED August 24, 1968  
 COMPLETED September 4, 1968

HOLE NO. B.S.H. #2  
 PROPERTY

LAT. 600 S  
 DEP. 025 E  
 ELEV. 83' above Lake level

FOOTAGE		DESCRIPTION	DIP TEST	CORE					
FROM	TO			SPL. NO.	FROM	TO	WIDTH	GRADE	
							Ur.	Th.	
0-	12.0	Casing	100'/57°						
12.0	40.0	Sericitic quartzite fine grained to med. grained, yellowish green	200'/51½						
40.0	200.0	Sericitic quartzite, med. grained with increasingly coarser grain after 120' Locally py. & pyrrh. seams & fine disseminations	300'/46° 400'/43°						
200.0	215.0	Conglomeratic qte. 6" pebble bd. at 201½ 6" " " " 206½ 18" " " " 207½ 3" " " " 212	2½ x B.G. 2½ x B.G.						
215.0	222	Quartz pebble conglomerate, tightly packed; py. seams and disseminations.		4609 4610	215.0 218.0	218.0 222.0	3.0 4.0	0.01% 0.01	- -
222.0	226.0	Quartz vein, 20° to core axis - some py.							
226.0	243.½	Conglomeratic qte. with scattered pebbles							
243½	246½	Pebble conglomerate; pyrite disseminations		4611	243½	246½	3.0	0.02	-
246½	250.0	Coarse ser. quartzite							
250.0	253.0	Pebble conglomerate (poor), some sulphides							
253.0	262½	Volcanic Tuff (Basement)							



BROULAN REEF MINES LIMITED

DIP \_\_\_\_\_ BEARING \_\_\_\_\_ LENGTH \_\_\_\_\_  
 LAT. \_\_\_\_\_  
 DEP. \_\_\_\_\_  
 ELEV. \_\_\_\_\_

STARTED \_\_\_\_\_  
 COMPLETED \_\_\_\_\_

HOLE NO. B.S.U. #2  
 PROPEFTY \_\_\_\_\_

FOOTAGE		DESCRIPTION	CORE				
FROM	TO		SPL NO.	FROM	TO	WIDTH	GRADE
262½	268½	Poor basal conglomerate with quartz pebbles, some qte & reworked tuff.					
268½	279½	Quartz pebble conglomerate, well packed; py & pyrrh.	4612	268½	271½	3.0	0.01 -
			4613	271½	275½	4.0	0.01 -
			4614	275½	279½	4.0	0.02 -
279½	295.0	Conglomeratic ser. qte. with scattered pebbles - some py. 281½ - 6" peb. bd. (4" pebbles) 291.0- 8" " " (½" pebbles)					
295.0	336.0	Conglomeratic ser. qte. with odd scattered pebbles. Some py. seams & disseminations.					
336.0	358½	Volcanic Tuff (Basement)					
358½	417.0	Med. grained ser. qte. getting finer grained towards bottom. Odd pebbles & small peb. bds. R.A. locally up to 3 X B.G. over a few inches.  End of Hole at 417'  Core logged by G. J. Westner.					

Shakespeare Twp.  
CLAIM NO.S-133412

BROULAN REEF MINES LIMITED

DIP - 80° BEARING N 155°E LENGTH 567½ ft.

STARTED September 5, 1968  
COMPLETED September 10, 1968

HOLE NO. B.S.U. #3  
PROPERTY \_\_\_\_\_

LAT. 880 S  
DEP. 400 E  
ELEV. 75' above Datum (Lake Level)

FOOTAGE		DESCRIPTION	DIP TEST	CORE				
FROM	TO			SPL NO.	FROM	TO	WIDTH	GRADE
0	15.0	Casing	100'/70½	4615	139.0	142.0	3.0	
15.0	120.0	Ser. Qte. medium grained, locally fine grained/odd bands of conglomerate qte. up to ¼" pebble size. Some dissem. py.	200/66½ 300'/65°	4616 4617	142.0 145.0	145.0 148.0	3.0 3.0	
120.0	226	Ser. qte. med. grained to coarse, single pebbles & small pebble bds. of ½" peb. size. 3" mud band at 139 ft. 139-161½ conglomeratic quartzite; ½" peb. 2 x B.G., Locally 3 x B.G. (146'-147')	400'/60½ 500'/51½	4618 4619 4620 4621	148.0 151.0 154.0 157.0	151.0 154.0 157.0 161.½	3.0 3.0 3.0 4½	
		161½-163½ 2 ft. peb. bd. up to ½" peb./2-2½ B.G.		4622	161½	163½	2.0	
		167½-169½ " " /2-2½ B.G.		4623	167½	169½	2.0	
		182 3" peb.bd. - ½" peb.						
		184 3" " - 1" peb.						
		197 2" " - 1" peb.						
226.0	235.0	Qtz. pebble conglomerate - pebbles 2" - B.G. to 2 x B.G.		4624 4625 4626	226.0 229.0 232.0	229.0 232.0 235.0	3.0 3.0 3.0	

BROULAN REEF MINES LIMITED

DIP \_\_\_\_\_ BEARING \_\_\_\_\_ LENGTH \_\_\_\_\_

STARTED \_\_\_\_\_  
COMPLETED \_\_\_\_\_

HOLE NO. B.S.U. #3  
PROPERTY \_\_\_\_\_

LAT. \_\_\_\_\_  
DEP. \_\_\_\_\_  
ELEV. \_\_\_\_\_

FOOTAGE		DESCRIPTION	CORE				
FROM	TO		SPL NO.	FROM	TO	WIDTH	GRADE
235.0	310.0	Gray med. grained quartzite At 241' 2" peb. band; 1/2" peb. At 286' 6" " ; 1/2" peb.					
310.0	313.0	Gray qte. with odd pebbles grading with conglom. qte.					
313 1/2	316.0	Poorly packed pebble conglomerate	4627	313 1/2	316.0	2 1/2	
316.0	317.0	Qte.					
317.0	318.0	Poor conglomerate	4628	317.0	318.0	1.0'	
318.0	321.0	Qte. - medium grained					
321.0	342 1/2	Conglomeratic qte. with local small peb. bds. at 336 1/2 & 337 1/2 ft.					
342 1/2	344.0	Pebble conglomerate; 1/2" peb.	4629	342 1/2	344.0	1 1/2'	
344.0	346.0	Qte.					
346.0	347 1/2	Poor conglomerate	4630	346.0	347 1/2	1 1/2'	
347 1/2	348.0	Qte.					
348.0	351 1/2	Qtz. pebble conglomerate	4631	348.0	351 1/2	3 1/2'	
351 1/2	363.0	Qte. - medium grained - Locally conglomeratic					
363.0	366 1/2	Qtz. pebble conglomerate	4632	363.0	366 1/2	3 1/2'	

DIP \_\_\_\_\_ BEARING \_\_\_\_\_ LENGTH \_\_\_\_\_  
 LAT. \_\_\_\_\_  
 DEP. \_\_\_\_\_  
 ELEV. \_\_\_\_\_

STARTED \_\_\_\_\_ HOLE NO. B.S.U. #3  
 COMPLETED \_\_\_\_\_ PROPERTY \_\_\_\_\_

FOOTAGE		DESCRIPTION	CORE				
FROM	TO		SPL NO.	FROM	TO	WIDTH	GRADE
366½	367½	Poor conglomerate to conglomeratic qte.					
367½	369.0	Qte. with 2" pebble band.					
369.0	414.0	Qte. medium grained to coarse, locally conglomeratic At 410.0' ... 12" poor conglomerate, max. ½" peb. near Pyrite seam 2½ - 3 x B.G.					
414.0	461½	Medium grained quartzite; sporadic pebbles; towards bottom becoming finer grained.					
461½	526.0	The same.					
526.0	547.0	Impure, in part feldspathic quartzite					
547.0	567½	Volcanic tuff & alternating impure quartzite bands. Paleosoil - Transition zone to volcanic basement.					
		END OF HOLE - 567½ ft.					
		Core logged by - G. J. Westner					
		NOTE: Varved mineralization of pyrite & pyrrhotite as seams & impregnations in conglomerate zones predominantly.					

BROULAN REEF MINES LIMITED

SHAKESPEARE TWP.  
CLAIM NO. 133412

DIP --80 BEARING N 155° E LENGTH 547 ft.  
LAT. 1000 S  
DEP. 800 E  
ELEV. 107.0

STARTED September 12, 1968 HOLE NO. B.S.U.#4  
COMPLETED September 17, 1968 PROPERTY

FOOTAGE		DESCRIPTION	DIP TEST	CORE				
FROM	TO			SPL NO.	FROM	TO	WIDTH	GRADE
0	12.0	Casing	100'/75 3/4					
12.0	118.0	Qte, greenish-gray, medium grained, locally feldspathic 12'-15' conglimeratic qte; 1/4" peb. 77'-79' Quartz vein	200/64 1/2 300'/64 1/2 400'/59 3/4					
118.0	130.0	Qte; yellowish sericitic, fine grained	500'/57 1/2					
130.0	203.0	Qte, coarse grained to conglomeratic with sections of fine grained qte.						
203.0	285.0	Qte, medium grained to coarse						
285.0	302.0	Quartz pebble conglomerate, well packed, 1-2" peb.		4633	285	288	3.0	
302.0	307.0	Qte. with odd pebbles; 3" peb. bd. at 304'.		4634	288	291	3.0	
307.0	314.0	Qte. pebble conglomerate, 1-2" peb. (The conglomerate is poor from 307-308)		4635 4636	291 294	294 298	3.0 4.0	
314.0	338.0	Qte. coarse grained, locally conglomeratic.		4638	298	302	4.0	
338.0	349.0	Qte. medium grained						
349.0	395.0	Qte., gray, medium grained turning fine grained towards bottom. 1" peb. bd. at 384'.		4639 4640	307 310	310 314	3.0 4.0	

BROULAN REEF MINES LIMITED

DIP \_\_\_\_\_

BEARING \_\_\_\_\_

SHEET 11

LENGTH \_\_\_\_\_

LAT. \_\_\_\_\_

DEP. \_\_\_\_\_

ELEV. \_\_\_\_\_

STARTED \_\_\_\_\_

HOLE NO. \_\_\_\_\_

B.S.U. #4

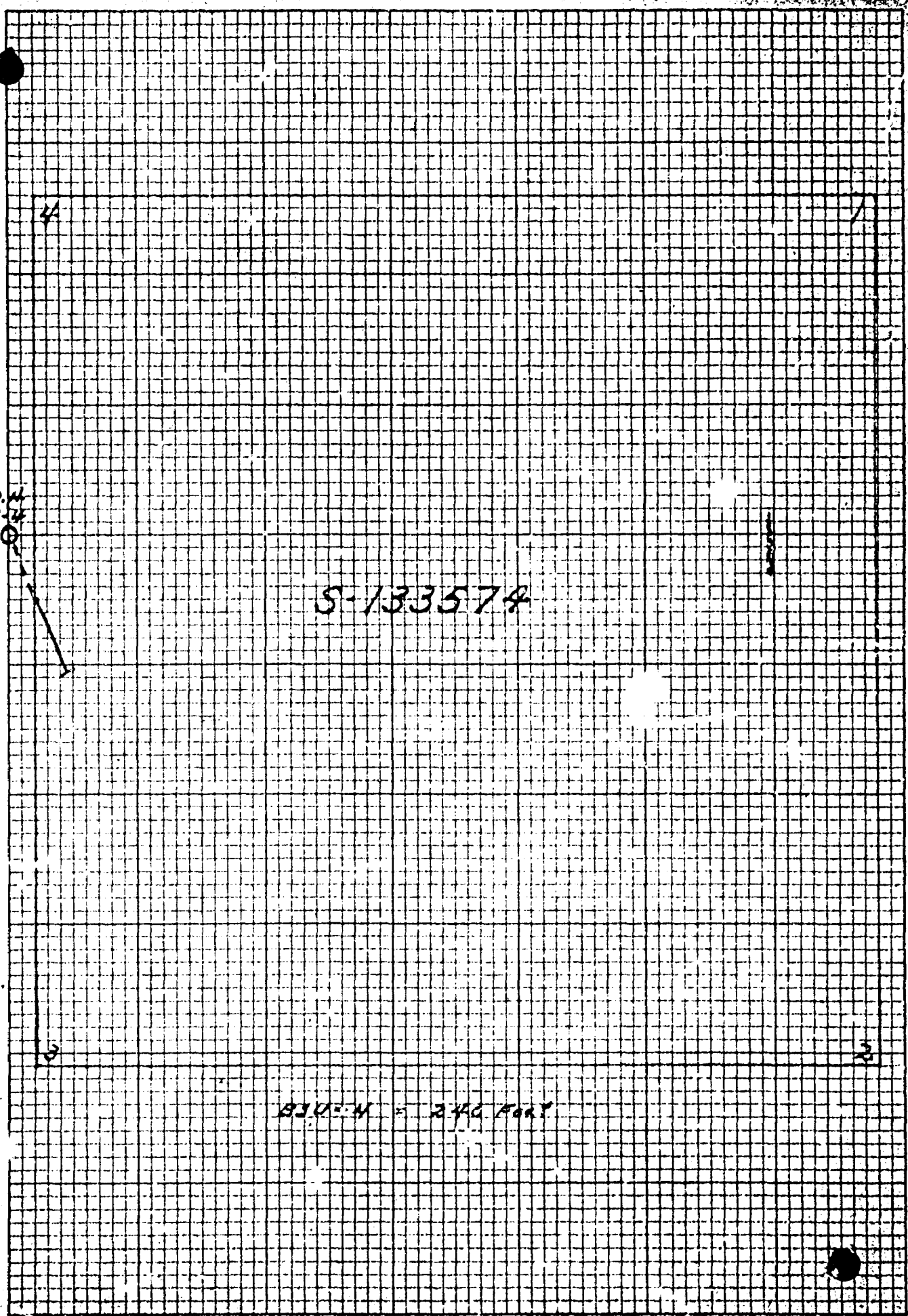
COMPLETED \_\_\_\_\_

PROPERTY \_\_\_\_\_

FOOTAGE		DESCRIPTION	CORE				
FROM	TO		SPL NO.	FROM	TO	WIDTH	GRADE
395.0	418.0	Qte. greenish medium to fine grained. Locally feldspathic over a few feet.					
418.0	442.0	The same - qte. is getting more feldspathic 438½ - 441 qte. dark impure.					
442.0	477.0	Qte. very fine grained, banded, feldsathic, very little sericite.					
477.0	483.0	Volcanics of Basement.					
483.0	547.0	Intensive gabbro dyke.					
		Radioactivity Locally 1½ - 2 x B.G. in conglomerate horizons.					
		END OF HOLE AT 547.0 FEET.					
		Core logged by: G. J. Westner.					

K-E  
3 X 10 INCHES  
REINART & BROS. CO.  
10 X 10 TO 10 LINE INCH  
NEW YORK  
48 0203

P.D. N  
BSU-74



S-133574

BSU-N = 240 FORT

BROULAN REEF MINES LIMITED

Shakespeare Twp.  
CLAIM NO. 133412

STARTED September 22, 1968  
COMPLETED September 28, 1968

HOLE NO. BSU #6  
PROPERTY \_\_\_\_\_

DIP 85° BEARING N 155° E LENGTH 870 feet

LAT. 48° S

DEP. 600 E

ELEV. ± 77.0 ft. above datum  
line.

FOOTAGE		DESCRIPTION	DIP TEST	CORE				
FROM	TO			SPL. NO.	FROM	TO	WIDTH	GRADE
0	18.0	Casing	100'/83 1/2°					
18.0	60.0	Quartzite, gray feldspathic-arcosic, medium grained.	200/83 1/2°					
60.0	74.0	Quartzite pink, feldspathic.	300'/83 1/4°					
74.0	222.0	Quartzite, gray, medium grained arcosic, in parts conglomeratic. After 170 ft. gradually turning conglomeratic.	400/77 3/4° 500/75 3/4°					
222.0	400.0	Greenish sericitic quartzite, medium grained to coarse grained. Locally more fine grained, or feldspathic: some parts more conglomeratic quartzite. Single odd 1/2" pebbles in coarser grained sections.	600/65 3/4° 700/59 3/4° 800/57°					
400.0	517.0	Quartzite sericitic, coarse grained; Locally conglomeratic. 513-515 conglomerate quartz with few 1"-2" bands of 1/2" pebbles. 515-517 same; pebbles squeezed.						
517.0	556.0	Quartzite greenish; medium to fine grained.						
556.0	590.0	The same - some small sections of conglomeratic quartzite.						



BROULAN REEF MINES LIMITED

DIP \_\_\_\_\_ BEARING \_\_\_\_\_ LENGTH \_\_\_\_\_

STARTED \_\_\_\_\_  
COMPLETED \_\_\_\_\_

HOLE NO. BSU #6  
PROPERTY \_\_\_\_\_

LAT. \_\_\_\_\_  
DEP. \_\_\_\_\_  
ELEV. \_\_\_\_\_

FOOTAGE		DESCRIPTION	CORE				
FROM	TO		SPL NO.	FROM	TO	WIDTH	GRADE
590.0	639.0	Coarse grained, gritty conglomeratic quartz.	4701	639	643	4'	
		611½ - 612½ pebble band, poor, 1/2" pebbles.	4702	643	647	4'	
		614 7" band	4703	647	651	4'	
		615½ 6" band	4704	651	655	4'	
		616 12" poor conglomerate to conglomeratic quartz.	4705	655	658	3'	
639.0	661½	Quartz pebble conglomerate, sericitic 1-3" pebbles	4706	658	661½	3½'	
661½	667.0	Quartzite coarse to poor conglomeratic quartz.		---			
667.0	704½	Quartz pebble conglomerate, more or less sericitic, becoming more chloritic and impure towards bottom.	4707	667	671	4'	
		1-3" pebbles	4708	671	675	4'	
			4709	675	679	4'	
704½	870	Basement volcanics; contact 60° to core axis	4710	679	683	4'	
			4711	683	687	4'	
		Radioactivity in conglomerates between 639 & 704½	4712	687	691	4'	
		2 - 3 x BG.	4713	691	695	4'	
			4714	695	699	4'	
			4715	699	704½	5½'	
		HOLE STOPPED AT 870 FEET.					
		Core logged by G. J. Westner.					

Shakespeare Twp.  
 CLAIM NO. 133412  
 STARTED September 30, 1968  
 COMPLETED October 4, 1968

BROULAN REEF MINES LIMITED

HOLE NO. B.S.U.#7  
 PROPERTY \_\_\_\_\_

DIP - 85° BEARING N 155° E LENGTH 527 ft  
 LAT. 260° S  
 DEP. 2700 E  
 ELEV. 113' above datum

FOOTAGE		DESCRIPTION	DIP TEST	CORE				
FROM	TO			SPL NO.	FROM	TO	WIDTH	GRADE
0	269.0	Sericitic qte. medium to coarse grained with a tendency to become conglomeratic. 88'-93' conglomeratic qte. to poor conglomerate 1/3" pebbles 115½-118 poor pebble conglomerate. ½-1" pebbles 119 -120 " " " 128 -129 poor conglomerate to conglomeratic qte.	100'/82½ 200'/80½ 300'/79° 400'/73½ 500'/73½					
269.0	290.0	Sericitic qte; medium grained. Locally a little conglomerate. 283-285 conglomeratic qte. to poor conglomerate. 1/3"-1/2" pebbles						
290.0	315.0	Conglomeratic qte. - Odd 1/2" pebbles						
315.0	320.0	Qte - medium grained.						
320.0	328.0	Conglomeratic qte.						
328.0	332.0	Qte. - medium grained.						
332.0	338.0	Conglomeratic qte. - Odd 1/2" pebbles						
338.0	367.0	Medium to coarse grained qte. with odd conglomeratic sections. 344½ - 345½ conglomeratic qte. 346½ - 347 " 352 - 353 "						

BROULAN REEF MINES LIMITED

DIP \_\_\_\_\_

BEARING \_\_\_\_\_

LENGTH \_\_\_\_\_

LAT. \_\_\_\_\_

DEP. \_\_\_\_\_

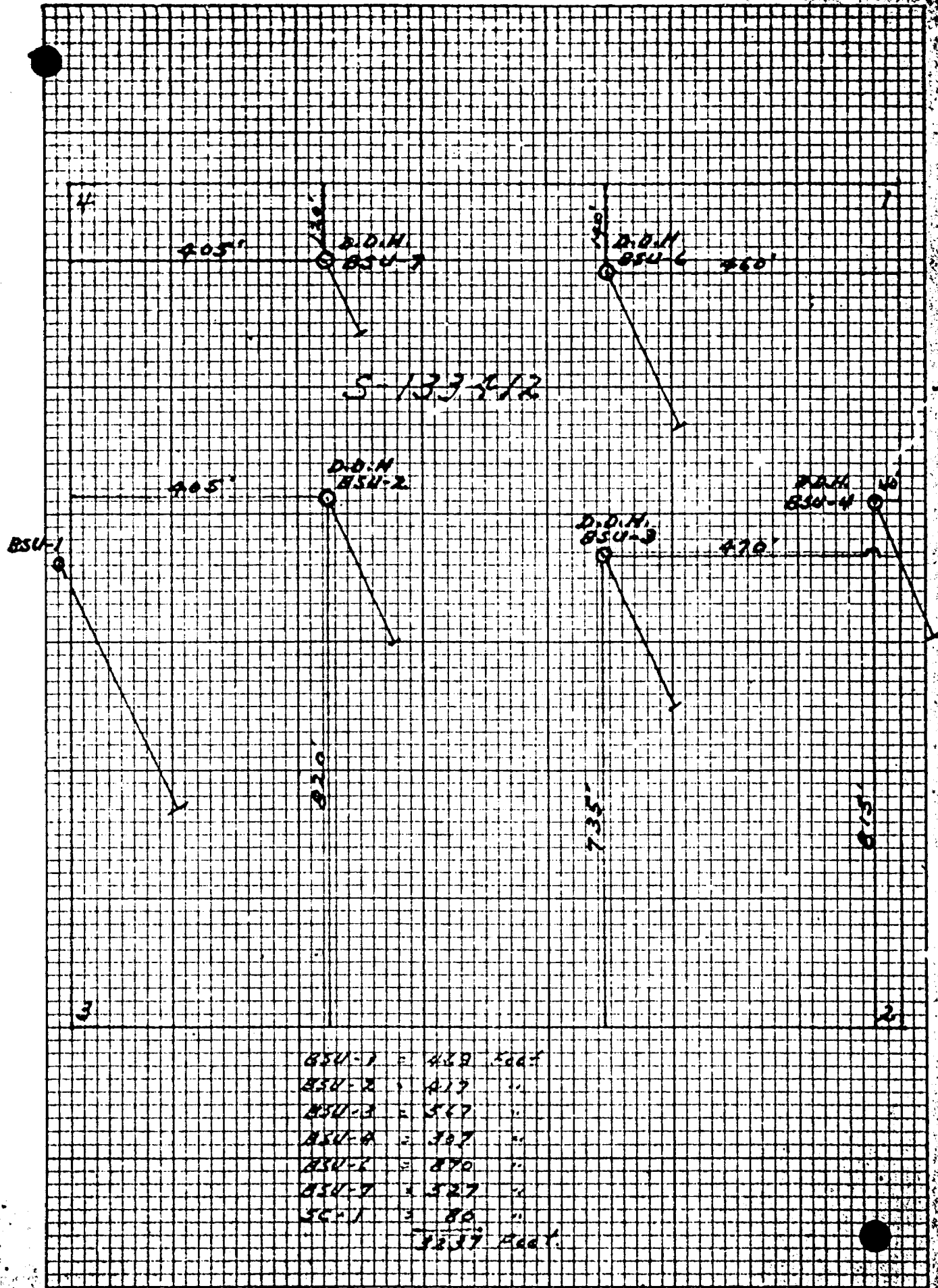
ELEV. \_\_\_\_\_

STARTED \_\_\_\_\_  
COMPLETED \_\_\_\_\_

HOLE NO. B.S.U. #7  
PROPERTY \_\_\_\_\_

FOOTAGE		DESCRIPTION	CORE				
FROM	TO		SPL NO.	FROM	TO	WIDTH	GRADE
367.0	416½	coarse grained sericitic qte. with small conglomeratic bands. Locally, odd much squeezed pebbles.					
416½	438.0	Coarse grained conglomeratic qte. 428½ - 42½ poor qtz. pebble conglomerate 432½ - 434½ " "					
438.0	469.0	(31 feet) quartz pebble conglomerate poor to fair. core ground up from 442-447 sulphide mineralization stringers at the bottom part. Radioactivity locally 1½ - 2 x BG.	4641	438	442	4.0'	
			4642	442	446	4.0'	
			4643	446	450	4.0'	
			4644	450	454	4.0'	
469.0	527.0	Basement Volcanics.	4645	454	458	4.0'	
			4646	458	462	4.0'	
			4647	462	466	4.0'	
			4648	466	469	3.0'	
		END OF HOLE AT 527.0'					
		Core logged by: G. J. Westner.					

K&E  
 1/2" INCHES  
 10 X 10 TO THE INCH  
 KEANER & ESSER CO.  
 NEW YORK, N.Y.



BROULAN REEF MINES LIMITED

Shakespeare Twp.  
CLAIM NO. 133417

STARTED September 20, 1968  
COMPLETED September 29, 1968

HOLE NO. BSU #5  
PROPERTY \_\_\_\_\_

DIP 80° BEARING N 155° E LENGTH 610'  
LAT. 850 S  
DEP. 3200 E  
ELEV. 55½ feet above datum line

FOOTAGE		DESCRIPTION	DIP TEST	CORE				
FROM	TO			SPL NO.	FROM	TO	WIDTH	GRADE
0	4.0	Casing	100'/76 1/2°					
4.0	83.0	Gabbro Dyke - 50° to core axis	200'/75°					
83.0	238.0	Feldspathic quartzite - Upper member of Lower Mississagi Formation.	300'/72° 400'/70 1/4°					
238.0	397.0	Sericitic quartzite fine grained with small sections of feldspathic quartzite. at 399 1/2 ... 3" pebble band 399 1/2 - 401.0 conglomerate gritty quartzite	500'/70 3/4° 600'/70 3/4°					
397.0	416.0	The same quartzite.						
416.0	457½	Fine grained to medium grained sericitic quartz; locally feldspathic or conglomeratic for a few feet. Small, odd pebbles. at 438 ... 1" band - 1/2" pebbles at 453 ... 1" band - 1" pebbles						
457½	499.0	Gabbro dyke - 45° to core axis						
499.0	528.0	Fine grained to medium grained feldspathic quartzite with odd small pebbles (1/4" max.)						

BROULAN REEF MINES LIMITED

DIP \_\_\_\_\_ BEARING \_\_\_\_\_ LENGTH \_\_\_\_\_

LAT. 850 South

DEP. 3200 East

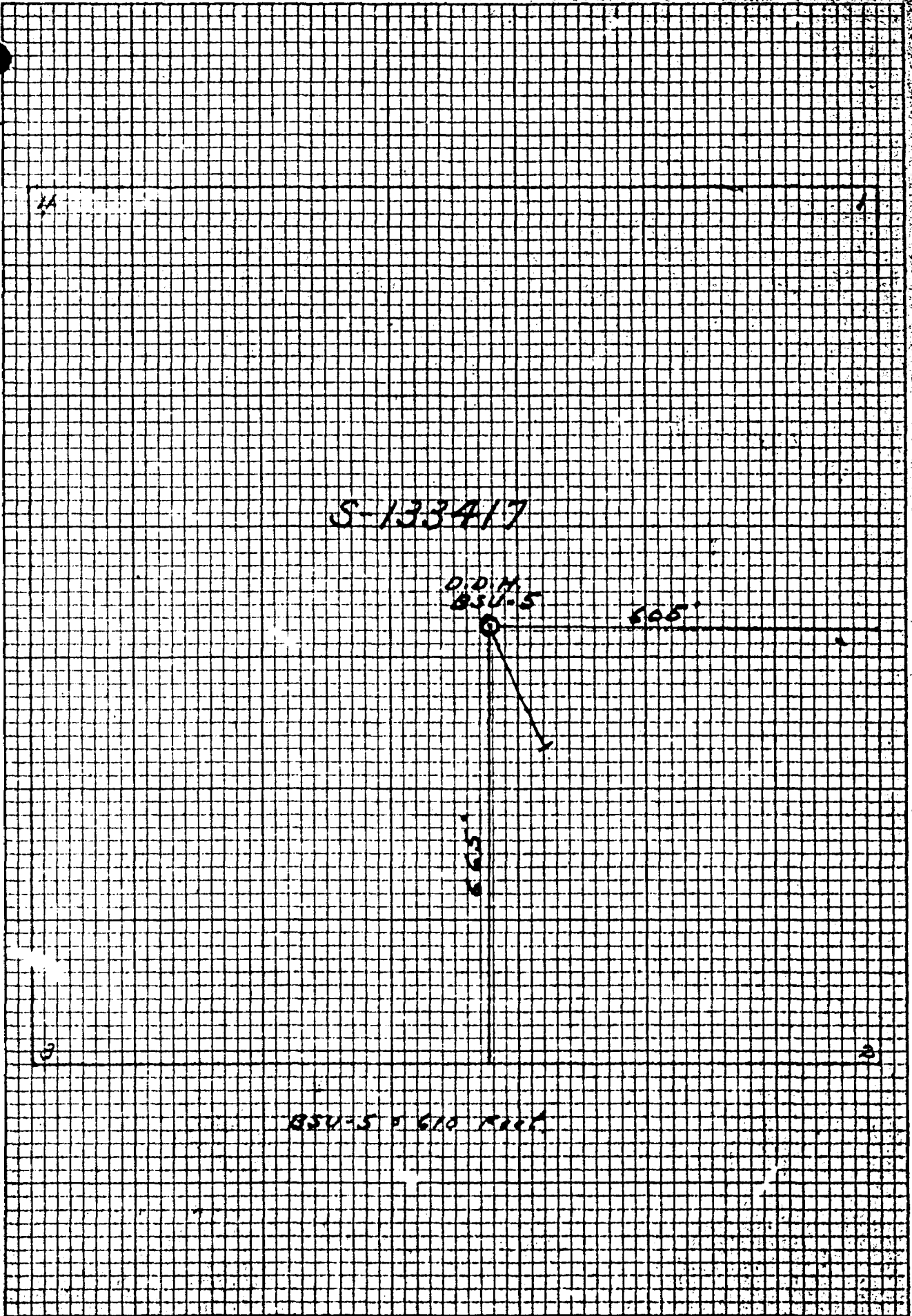
ELEV. 55 1/2 feet above datum line

STARTED \_\_\_\_\_  
COMPLETED \_\_\_\_\_

HOLE NO. BSU #5  
PROPERTY \_\_\_\_\_

FOOTAGE		DESCRIPTION	CORE				
FROM	TO		SPL NO.	FROM	TO	WIDTH	GRADE
528.0	570.0	Gabbro dyke - approx. 45° to core axis					
570.0	610.0	Gabbro dyke					
		<u>NOTE:</u> Hole was stopped to avoid unnecessary drilling in dyke.					
		Radioactivity: NIL					
		END OF HOLE AT 610.0 FEET					
		Core logged by: G. J. Westner					

K&E  
1 1/2 X 10 INCHES  
KIMBARK & BAKER CO.  
10 X 10 JOINT INCH  
NO. 0103  
MADE IN U.S.A.



S-133417

D.D.M.  
BSU-5

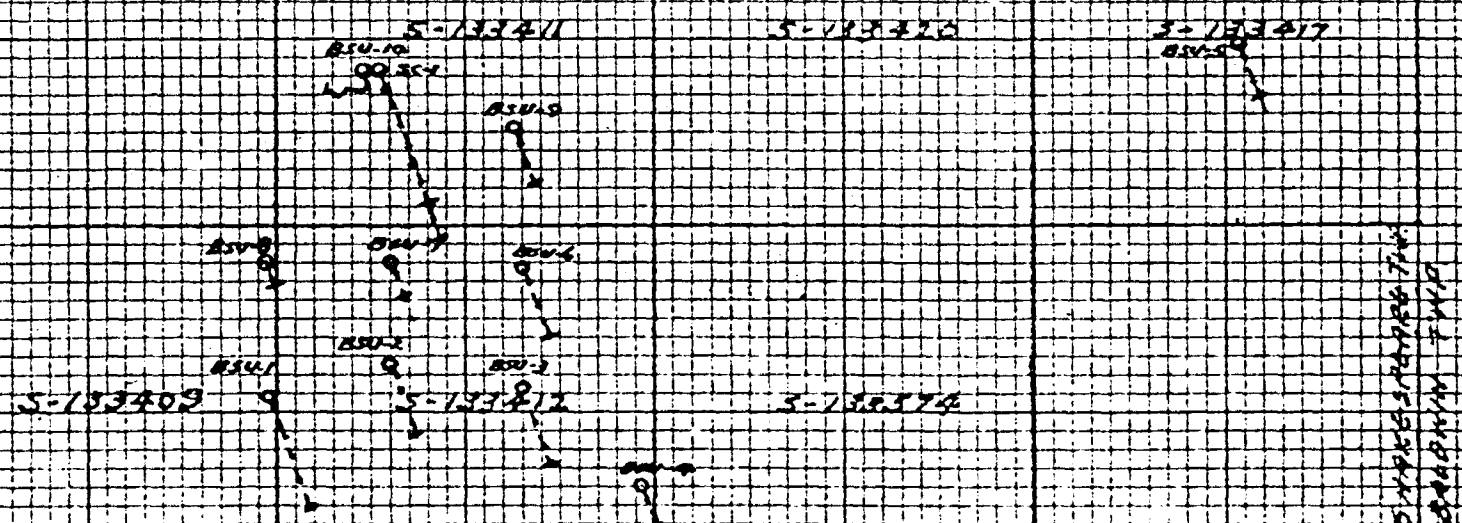
505'

610 feet

BSU-5 = 610 feet

LOT 2

LOT 1



SHAKESPEARE TWP.  
BRANDON TWP.

CON. II  
CON. I

BROULAN REEF MINES LTD.  
SHAKESPEARE TWP.

SCALE: 1" = 10 CH.

JANUARY 27, 1968

1" = 10 CH.



BROULAN REEF MINES LIMITED

Shakespeare Twp.  
CLAIM NO. S-133417

STARTED November 7, 1968 \*  
COMPLETED February 11, 1969

HOLE NO. BSU-11  
PROPERTY

DIP - 80°

BEARING N 155° E

LENGTH 1330'

LAT. 98° S

DEP. 3560 F

ELEV. 49' above datum

FOOTAGE		DESCRIPTION	DIP TEST	CORE				
FROM	TO			SPL NO.	FROM	TO	WIDTH	GRADE
0	12.0	Casing	100/79½					
12.0	168.0	Diabase Dyke 20° to core - is	200/77½					
168.0	204.0	Fine grained Feldspathic Quartzite (= Upper Member of Lower Mississagi Formation)	300/75° 400/74½					
204.0	212.0	Diabase Dyke	500/72½					
212.0	222.0	Feldspathic quartzite	600/67°					
222.0	237.0	Diabase Dyke	700/67°					
237.0	302.0	Feldspathic quartzite	800/61½					
302.0	453.0	Diabase Dyke	900/60½					
453.0	525.0	Fine grained felspathic quartzite	1000/58					
525.0	846½	Gray, locally fine grained sericitic quartzite with lesser feldspathic.	1100/58 1200/56½					
846½	1330.0	Gabbro; contact 60° to core axis - 6" brecciated zone at 1,100 ft. (= Fault)						
		END Hole was stopped at 1,330 FEET						
		Core logged by G. J. Westner.						

\* Drilling Nov.7, 1968 - Nov.11, 1968  
Freeze-up Interruption  
Drilling Feb.6, 1969 - Feb.11, 1969

RANGE V

RANGE IV

FALCON BRIDGE  
BROULAN REEF

LOT 2

LOT 1

CLAIM  
S-133417  
B.S.U.#11

A  
G  
N  
E  
W

L  
A  
K  
E

PROPERTY  
BOUNDARY

SHAKESPEARE TWP.  
BALDWIN TWP.

DESCRIPTION OF LOCATION OF COLAR  
OF Q.D.#. B.S.U.#11:

S 1/2 OF E 1/2 LOT 1, RANGE V  
SHAKESPEARE TWP.

300' W } POST NO 1, CLAIM 133417  
600' S }

BROULAN REEF MINES LTD.

LOCATION MAP B.S.U. #11  
SHAKESPEARE TWP. - SUDBURY, MIN. DIV.

DATE : 11-2-69  
SCALE : 1" = 1000'  
DRAWN BY: G.J.W.

1" = 1000'



















BROULAN REEF MINES LIMITED

# SC-4  
Sheet 9.

CLAIM NO. \_\_\_\_\_

ASSESSMENT GROUP NO. \_\_\_\_\_

DIP \_\_\_\_\_

STARTED Jan. 25/68

HOLE NO. S.C. # 4

BEARING \_\_\_\_\_

COMPLETED Jan. 30/68

PROPERTY SHARK-SPEAR COPPER

LENGTH \_\_\_\_\_

LAT. \_\_\_\_\_

DEP. \_\_\_\_\_

ELEV. \_\_\_\_\_

Notes

FOOTAGE		DESCRIPTION	Dip Test	CORE															
FROM	TO			SPL NO.	FROM	TO	WIDTH	Ur.	Th.	Yt.									
		688.9-689.0 - Qtz - veinlet @ 55° To C.A. No. Min																	
		690.3-690.6 " " @ 65° " " " "																	
		691.0-3/4" " " @ 60° " " " "																	
		701.8-702.0 - Qtzite - contacts @ 55° & 70° To C.A. " "																	
		706.6-706.8 - Qtz - carb - veinlet @ 50° To C.A. " "																	
		718.2-1/2" Carb - Qtz veinlet @ 65° To C.A. " "																	
		720.2-720.6 - contact zone - digested gw. No sharp contact																	
720.6	744.0	6.7 lb. bro. - massive - fine - med - gr. becoming cse. so. @ 723.7 - dark grey - black color - ccl - carb - Qtz - stak.																	
		@ various L to R axis - No. Min																	
		725.3-1/4" Carb - Qtz - stak @ 45° To C.A. " "																	
		726.0-726.5-1/4" Carb - Qtz - stak @ 15° To C.A. " "																	
		735.0-1/4" " " @ 45° " " " "																	
		741.6-1/2" " " @ 50° " " " "																	
		742.9-743.2-1/2" " " @ 15° " " " "																	
		743.5-1/4" Qtz - carb - stak @ 40° " " " "																	
		End of hole 744 Feet																	

J. E. Beardsley



ONTARIO

THE MINING ACT REPORT OF WORK

A separate form is required for each type of work to be recorded.

To the Recorder of... Sudbury... Mining Division

I, ... Broulan Reef Mines Limited name of Recorded Holder A 31385 Miner's Licence

do hereby report the performance of ... 4,637 ... days of ... Diamond Drilling ... type of work

not before reported to be applied on the following contiguous claims - see attached schedule.

Table with columns: Claim No., Days, Claim No., Days, Claim No., Days. Includes a barcode for 411055W0106 0016 SHAKESPEARE and the number 900.

All the work was performed on Mining Claim (s) ... S133411; S133417; and S133420 ... (In the case of geological and/or geophysical survey (s) where more than 18 claims are involved attach a schedule)

READ CAREFULLY: THE FOLLOWING INFORMATION IS REQUIRED BY THE MINING RECORDER.

- For Manual Work, Stripping or Opening up of Mines, Sinking Shafts or Other Actual Mining Operations - Names and addresses of the men who performed the work and the dates and hours of their employment.
For Diamond and other Core Drilling - Footage, No. and angle of holes and diameter of core. Name and address of owner or operator of drill. Dates when drilling was done. Signed core log and sketch in duplicate.
For Compressed Air or Other Power Driven or Mechanical Equipment
Type of drill or equipment. Names and addresses of men engaged in operating equipment and the dates and hours of their employment.
For Power Stripping - Type of equipment. Name and address of owner or operator. Amount expended. Dates on which work was done. Proof of actual cost must be submitted within 30 days of recording.
With each of the above types of work sketches are required to show the location and extent of the work in relation to the nearest claim post. In the case of diamond or other core drilling the sketch must be submitted in duplicate.
For Geological and Geophysical Survey - The names and addresses of men employed as well as dates. Type of instrument used in the case of geophysical survey. Reports and maps in duplicate must be filed with the Minister within 60 days of recording.
For Land Survey - the name and address of Ontario Land surveyor.

The Required Information is as Follows: (Attach a list if this space is insufficient)

4,637 feet of diamond drilling, AX core (1 1/8") in six holes. Drilling Contractor - F. Grouleau, 411 Taschereau St. East, Rouyn, P.Q. Drilling started October 13, 1967 - completed February 19, 1968.

Table with columns: HOLE NO., FOOTAGE, DIP, HOLE NO., FOOTAGE, DIP. Rows include S.C.-1 (771, -60), S.C.-2 (786, -60), S.C.-3 (394, -60), S.C.3 N 1 (692, -60), S.C.4 (744, -45), S.C.5 (1250, -43).

Date May 30 1968 Signature of Recorded Holder or Agent

The Mining Act Certificate Verifying Report of Work

I, ... H. F. Atkins, P. E. Suite 705, 105 Adelaide Street West, Toronto 1, Ontario (Post Office Address)

hereby certify: 1. That I have a personal and intimate knowledge of the facts set forth in the report of work annexed hereto, having performed the work or witnessed some during and/or after its completion. 2. That the annexed report is true.

Dated MAY 10 19 68 Signature

147594

THE PENALTY FOR MAKING A FALSE STATEMENT IN THIS REPORT AND/OR CERTIFICATE IS \$500. OR SIX MONTHS IMPRISONMENT OR BOTH

BROULAN REEF MINES LIMITED  
SCHEDULE OF ASSESSMENT WORK  
GROUP 1968-1

<u>CLAIM NO.</u>	<u>DAYS</u>	<u>CLAIM NO.</u>	<u>DAYS</u>	<u>CLAIM NO.</u>	<u>DAYS</u>
S147594	80	S133409	54	S136866	20
S147595	80	S133411	54	S136867	20
S147596	80	S133412	54	S136868	20
S147597	80	S133413	60	S136869	20
S147598	80	S133414	60	S136870	20
S147599	80	S133415	60	S136871	20
S147600	80	S133416	60	S136872	20
S147601	80	S133417	60	S136873	20
S147602	80	S133418	60	S136874	20
S147603	80	S133419	60	S136875	20
S147604	80	S133420	55	S136876	20
S147605	80	S133574	60	S136877	20
S147606	80	S133581	60	S136878	20
S147607	80	S133582	60	S136879	20
S147608	80	S133583	60	S136880	20
S147609	80	S133584	60	S136881	20
S147614	80	S133585	60	S136882	20
S147615	80	S133586	60	S136883	20
S147616	80	S148246	60	S137495	20
S147617	80	S148247	60	S137496	20
S147618	80	S148248	60	S137497	20
S147619	80	S148249	60	S137498	20
S147620	80	S148250	60	S137499	20
S147621	80	S148251	60	S137500	20
S147622	80	S148252	60	S137501	20
	<u>2,000</u>	S148253	60	S137502	20
		S148254	60	S137503	20
		S148255	60	S137504	20
		S148256	60	S137505	20
			<u>1,717</u>	S137506	20
				S137507	20
				S137508	20
				S137509	20
				S139286	20
				S139287	20
				S139288	20
				S139289	20
				S139290	20
				S140056	20
				S140057	20
				S140058	20
				S140059	20
				S140060	20
				S140061	20
				S140062	20
				S140063	20
				<u>920</u>	
	<u>2,000</u>		<u>1,717</u>		

GRAND TOTAL (100 CLAIMS) 4,637



ONTARIO

THE MINING ACT REPORT OF WORK

A separate form is required for each type of work to be recorded.

To the Recorder of SUDBURY Mining Division
BROULAND REEF MINES LIMITED A-31385
I, name of Recorded Holder Suite 705, 105 Adelaide St. West. Toronto, Ontario Miner's Licence
Post Office Address

do hereby report the performance of 6365 days of Diamond drilling type of work

not before reported to be applied on the following contiguous claims

Table with 6 columns: Claim No., Days, Claim No., Days, Claim No., Days. Content: See attached list

All the work was performed on Mining Claim (s) S-133409, S-133411, S-133412, S-133417, S-133574 (In the case of geological and/or geophysical survey (s) where more than 18 claims are involved attach a schedule)

READ CAREFULLY: THE FOLLOWING INFORMATION IS REQUIRED BY THE MINING RECORDER.

- For Manual Work, Stripping or Opening up of Mines, Sinking Shafts or Other Actual Mining Operations - Names and addresses of the men who performed the work and the dates and hours of their employment.
For Diamond and other Core Drilling - Footage, No. and angle of holes and diameter of core. Name and address of owner or operator of drill. Dates when drilling was done. Signed core log and sketch in duplicate.
For Compressed Air or Other Power Driven or Mechanical Equipment
Type of drill or equipment. Names and addresses of men engaged in operating equipment and the dates and hours of their employment.
For Power Stripping - Type of equipment. Name and address of owner or operator. Amount expended. Dates on which work was done. Proof of actual cost must be submitted within 30 days of recording.
With each of the above types of work sketches are required to show the location and extent of the work in relation to the nearest claim post. In the case of diamond or other core drilling the sketch must be submitted in duplicate.
For Geophysical, Geological, Geochemical Surveys and Expenditure Credits - the name of author of report. Covering dates of survey (linecutting in office). Type of instrument used. Total amount of expenditure. Technical reports, maps, expenditure breakdown, receipts must be filed in duplicate with the Minister within 60 days of recording.
For Land Survey - the name and address of Ontario Land surveyor.

The Required Information is as Follows: (Attach a list if this space is insufficient)

Table with 6 columns: Hole No., Dip, Bearing, Length, CLAIM NO., FOOTAGE. Content: HOSKING DIAMOND DRILLING CO. LTD. McWATTERS, QUEBEC. BSU-1 to BSU-9, SC-1. Total = 6365'

Date January 28, 1969 Signature of Recorded Holder or Agent

The Mining Act Certificate Verifying Report of Work

I, G. J. Westner, McKerrow, Ontario (Post Office Address)

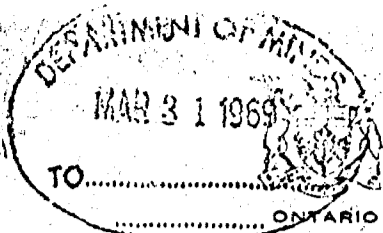
hereby certify:

- 1. That I have a personal and intimate knowledge of the facts set forth in the report and have verified the same here-to, having performed the work or witnessed some during and/or after its completion.
2. That the annexed report is true.

Dated 19 Signature

THE PENALTY FOR MAKING A FALSE STATEMENT IN THIS REPORT AND/OR CERTIFICATE IS \$500. OR SIX MONTHS IMPRISONMENT OR BOTH

DUPLICATE COPY POOR QUALITY ORIGINAL TO FOLLOW



73

A separate form is required for each type of work to be recorded.

THE MINING ACT REPORT OF WORK

To the Recorder of.....SUDBURY.....Mining Division

I, .....BROQUAN REEF MINES LIMITED.....A-21385  
 name of Recorded Holder Miner's Licence  
 .....Suite 705, 105 Adelaide Street West, Toronto 1, Ontario......  
 Post Office Address

do hereby report the performance of .....6365..... days of .....Diamond Drilling.....  
 type of work

not before reported to be applied on the following contiguous claims

Claim No.	Days	Claim No.	Days	Claim No.	Days
..... <u>See attach. 1. list</u> .....	.....	.....	.....	.....	.....
.....	.....	.....	.....	.....	.....
.....	.....	.....	.....	.....	.....
.....	.....	.....	.....	.....	.....
.....	.....	.....	.....	.....	.....
.....	.....	.....	.....	.....	.....
.....	.....	.....	.....	.....	.....

*Shakerpegging*

All the work was performed on Mining Claim (s) S-133409, S-133411, S-133412, S-133417, S-133574  
 (In the case of geological and/or geophysical survey (s) where more than 18 claims are involved attach a schedule)

READ CAREFULLY: THE FOLLOWING INFORMATION IS REQUIRED BY THE MINING RECORDER.

- For Manual Work, Stripping or Opening up of Mines, Sinking Shafts or Other Actual Mining Operations - Names and addresses of the men who performed the work and the dates and hours of their employment.
- For Diamond and other Core Drilling - Footage, No. and angle of holes and diameter of core. Name and address of owner or operator of drill. Dates when drilling was done. Signed core log and sketch in duplicate.
- For Compressed Air or Other Power Driven or Mechanical Equipment  
 Type of drill or equipment. Names and addresses of men engaged in operating equipment and the dates and hours of their employment.
- For Power Stripping - Type of equipment. Name and address of owner or operator. Amount expended. Dates on which work was done. Proof of actual cost must be submitted within 30 days of recording.
- With each of the above types of work sketches are required to show the location and extent of the work in relation to the nearest claim post. In the case of diamond or other core drilling the sketch must be submitted in duplicate.
- For Geological and Geophysical Survey - The names and addresses of men employed as well as dates. Type of instrument used in the case of geophysical survey. Reports and maps in duplicate must be filed with the Minister within 60 days of recording.
- For Land Survey - the name and address of Ontario Land surveyor.

The Required Information is as Follows: (Attach a list if this space is insufficient)

Hosking Diamond Drilling Co., Ltd.  
 McWatters, Quebec.

CLAIM NO.	FOOTAGE
S-133409	801 Feet
S-133411	2477 "
S-133412	3237 "
S-133417	610 "
S-133574	210 "
TOTAL	6365

HOLE NO.	DIP	BEARING	LENGTH	HOLE NO.	DIP	BEARING	LENGTH
BSU-1	-55	S-25-E	537 Feet	BSU-8	-85	S-25-E	733 Feet
BSU-2	-70	"	417 "	BSU-9	-35	"	1411 "
BSU-3	-80	"	567 "	SC-1	-60	S-20-E	116 "
BSU-4	-80	"	517 "	TOTAL			6365 Feet
BSU-5	-80	"	610 "				
BSU-6	-85	"	870 "				
BSU-7	-85	"	527 "				

Date .....January 28, 1969.....

Signature of Recorded Holder or Agent

The Mining Act Certificate Verifying Report of Work

I, .....G. J. Woskner.....  
 .....McKerrow, Ontario.....  
 (Post Office Address)

hereby certify:

1. That I have a personal and intimate knowledge of the facts set forth in the report of work annexed hereto, having performed the work or witnessed same during and/or after its completion.
2. That the annexed report is true.

Dated .....Jan 28..... 19.....1969.....  
 Signature

147594

THE PENALTY FOR MAKING A FALSE STATEMENT IN THIS REPORT AND/OR CERTIFICATE IS \$500. OR SIX MONTHS IMPRISONMENT OR BOTH

CLAIM NUMBER	DAYS WORK	CLAIM NUMBER	DAYS WORK
S147594	120	S148249	80
S147595	120	S148250	80
S147596	120	S148251	80
S147597	110	S148252	80
S147598	60	S148253	80
S147599	60	S148254	80
S147600	60	S148255	80
S147601	60	S148256	80
S147602	60		
S147603	60	S136866 <i>Parce</i>	54
S147604	60	S136867 "	54
S147605	60	S136868 "	54
S147606	60	S136869 "	54
S147607	60	S136870 "	54
S147608	60	S136871 <i>Bellevue</i>	54
S147609	60	S136872 "	54
S147614	60	S136873 "	54
S147615	60	S136874 "	54
S147616	60	S136875 "	54
S147617	60	S136876 "	54
S147618	60	S136877 "	54
		S136878 "	54
S147619	60	S136879 "	54
S147620	60	S136880 "	54
S147621	60	S136881 "	54
S147622	60	S136882 <i>Parce</i>	54
		S136883 <i>Bellevue</i>	54
S133409	66	S137495 "	54
S133411	66	S137496 "	54
S133412	66	S137497 "	54
		S137498 "	54
S133413 <i>Bellevue</i>	74	S137499 "	54
S133414 "	74	S137500 "	54
S133415 "	74	S137501 "	54
S133416	74	S137502 "	54
		S137503 "	54
S133417	60	S137504 "	54
		S137505 "	54
S133418	74	S137506 "	54
S133419	74	S137507 "	54
		S137508 "	54
S133420	65	S137509 "	54
		S139286 "	54
S133574	60	S139287 "	54
		S139288 "	54
S133581 <i>Bellevue</i>	74	S139289 <i>Bellevue</i>	54
S133582 "	74	S139290 "	54
S133583 "	74	S140056 <i>Bellevue</i>	54
S133584 "	74	S140057 "	54
S133585 "	74	S140058 "	54
S133586 "	74	S140059 "	54
		S140060 "	54
S148246	80	S140061 "	54
S148247	80	S140062 "	54
S148248	80	S140063 "	54

Total: 100 claims      6,365 days work.





ONTARIO

THE MINING ACT REPORT OF WORK

A separate form required for each type of work to be recorded.

11 OCT 1969

To the Recorder of..... Sudbury..... Mining Division

I, ..... Broulan Reef Mines Limited..... A-31385..... Miner's Licence

name of Recorded Holder  
105 Adelaide St. West, Toronto, Ontario..... Post Office Address

do hereby report the performance of ..... 2,321..... days of diamond drilling and core specimens..... type of work

not before reported to be applied on the following contiguous claims

Claim No.	Days	Claim No.	Days	Claim No.	Days
.....(per list attached hereto).....					
.....	.....	.....	.....	.....	.....
.....	.....	.....	.....	.....	.....
.....	.....	.....	.....	.....	.....
.....	.....	.....	.....	.....	.....
.....	.....	.....	.....	.....	.....

All the work was performed on Mining Claim (s) S. 133417; S. 140256; S. 137290; Shakespeare Twp. (In the case of geological and/or geophysical survey (s) where more than 18 claims are involved attach a schedule)

READ CAREFULLY: THE FOLLOWING INFORMATION IS REQUIRED BY THE MINING RECORDER.

- For Manual Work, Stripping or Opening up of Mines, Sinking Shafts or Other Actual Mining Operations - Names and addresses of the men who performed the work and the dates and hours of their employment.
- For Diamond and other Core Drilling - Footage, No. and angle of holes and diameter of core. Name and address of owner or operator of drill. Dates when drilling was done. Signed core log and sketch in duplicate.
- For Compressed Air or Other Power Driven or Mechanical Equipment - Type of drill or equipment. Names and addresses of men engaged in operating equipment and the dates and hours of their employment.
- For Power Stripping - Type of equipment. Name and address of owner or operator. Amount expended. Dates on which work was done. Proof of actual cost must be submitted within 30 days of recording.
- With each of the above types of work sketches are required to show the location and extent of the work in relation to the nearest claim post. In the case of diamond or other core drilling the sketch must be submitted in duplicate.
- For Geological and Geophysical Survey - The names and addresses of men employed as well as dates. Type of instrument used in the case of geophysical survey. Reports and maps in duplicate must be filed with the Minister within 60 days of recording.
- For Land Survey - the name and address of Ontario Land surveyor.

The Required Information is as Follows: (Attach a list if this space is insufficient)

HOLE NO.	DIP	FOOTAGE	Core size: AX
BSU-11	-80°	1,330'	
AN -2	-60°	902'	
		2,232'	= credit of 2,232 days
Core specimens submitted herewith for credit of			89 days
Total Credit			2,321 days

Contractor: Hosking Diamond Drilling Co. Limited, McWatters, Quebec.

BROULAN REEF MINES LIMITED

Date ..... July 14, 1969.....

Signature of Recorded Holder or Agent

The Mining Act Certificate Verifying Report of Work

I, ..... George J. Westner, ..... c/o Broulan Reef Mines Limited, P.O. Box 1487, Espanola, Ontario, (Post Office Address)

hereby certify:

- That I have a personal and intimate knowledge of the facts set forth in the report of work annexed hereto, having performed the work or witnessed same during and to the completion.
- That the annexed report is true.

Dated July 14, 1969

SUDBURY JUL 16 1969

Signature

5137895

THE PENALTY FOR MAKING A FALSE STATEMENT IN THIS REPORT AND/OR CERTIFICATE IS \$500. OR SIX MONTHS IMPRISONMENT OR BOTH

BROULAN REEF MINES LIMITED

CLAIM NO.	DAYS	CLAIM NO.	DAYS	CLAIM NO.	DAYS	CLAIM NO.	DAYS
Shakespeare Twp.							
S.137895	34✓	S.133584	1✓	S.155176	20✓	S.155323	20
S.137896	34✓	S.137503	1✓	S.155177	20✓	S.155324	20
S.137897	34✓	S.136880	1✓	S.155178	20✓	S.155325	20
S.137898	34✓	S.136876	1✓	S.155851	20✓	S.155326	20
S.137899	34✓	S.136871	1✓	S.155296	5✓	S.155327	20
S.139709	34✓			S.155297	20✓	S.155328	20
Porter Twp.							
S.139710	34✓	S.136866	1✓	S.155298	20✓	S.155329	20
S.139711	34✓	S.155388	1✓	S.155299	20✓	S.155330	20
S.139712	34✓	S.155386	1✓	S.155300	20✓	S.155331	20
S.139304	34✓	S.155384	1✓	S.155301	20✓	S.155332	20
S.139305	34✓	S.155816	1✓	S.155302	20✓	S.155333	20
S.139306	34✓	S.155397	1✓	S.155303	20✓	S.155334	20
S.139307	34✓	S.155398	1✓	S.155304	20✓	S.155335	20
S.139308	34✓	S.151444	60✓	S.155305	20✓	S.155336	20
S.139309	34✓	S.151445	60✓	S.155306	20✓	S.155337	20
S.139310	34✓	S.151446	60✓	S.155307	20	S.155338	20
S.139311	34✓	S.151447	60✓	S.155308	20	S.155339	20
S.139312	34✓	S.151448	60✓	S.155309	20	S.155340	20
S.139289	1✓	S.151449	60✓	S.155310	20✓	S.155341	20
<del>S.139290</del>	1✓	S.155164	20✓	S.155311	20✓	S.155399	20
S.148253	1✓	S.155165	20✓	S.155312	20✓	S.155400	20
S.148247	1✓	S.155166	20✓	S.155313	20✓	S.155401	20
S.148246	1✓	S.155167	20✓	S.155314	20✓	S.155402	20
S.147619	1✓	S.155168	20✓	S.155315	20✓	S.155403	20
S.133409	1✓	S.155169	20✓	S.155316	20		
S.133412	1✓	S.155170	20✓	S.155317	20✓		
S.133574	1✓	S.155171	20✓	S.155318	20		
S.133417	1✓	S.155172	20✓	S.155319	20		
		S.155173	20✓	S.155320	20		
Baldwin Twp.							
S.133415	1✓	S.155174	20✓	S.155321	20		
S.133582	1✓	S.155175	20✓	S.155322	20		

TOTAL DAYS 2,321

NOTE: 89 days credit included above for core specimens applied as follows:

S.155326	20 days	S.155328	20 days	S.155330	9 days
S.155327	20 days	S.155329	20 days		

137895



705 674-3151

ONTARIO  
DEPARTMENT OF MINES

June 10, 1968.

Dr. J. F. Donovan,  
Resident Geologist,  
1349 Lasalle Blvd.,  
Sudbury, Ontario.

Dear Sir:

We enclose herewith Diamond Drill logs and sketch  
pertaining to work submitted by Broulan Reef Mines Limited,  
with respect to mining claims S.133411, 133417, and 133420.  
These claims are situate in Shakespeare Twp.

Yours very truly,

P. Logee  
Acting Mining Recorder

/jm  
Encl.

3 claims (4607') 6 DH

1250'  
744  
692  
394  
786  
771  

---

4607'



ONTARIO  
DEPARTMENT OF MINES  
Mining Lands Branch

PARLIAMENT BUILDINGS  
TORONTO 2, ONTARIO

Tel. 416 365-6139

February 19, 1969.

Resident Geologist,  
Ont. Dept. Mines,  
1349 LaSalle Blvd.  
SUDBURY, Ontario.

Att'n: Mr. Ken Card,

Dear Ken:

Enclosed you will find diamond drill logs for  
Mining Claims S.133409, S.133411, S.133412, S.133417, S.133574  
in Shakespeare Township.

Drill logs are now routed through us by the Mining  
Recorder.

Yours very truly,

*pu* G. T. Stevens,  
Research Officer.

MPH/fv

Drill Core Specimens  
DDH # BSU-9 to 17  
AN-2



ONTARIO  
DEPARTMENT OF MINES  
Mining Lands Branch

PARLIAMENT BUILDINGS  
TORONTO 2, ONTARIO  
Tel. 416 365-6139

March 3, 1969.

Dr. K. D. Card,  
Geologist,  
Ont. Dept. Mines,  
1349 LaSalle Blvd.,  
SUDBURY, Ontario.

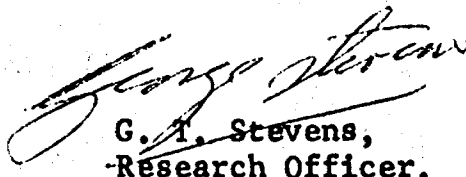
Dear Sir:

Thank you for your letter of February 28th informing us of how to forward drill logs to you. Since this is a newly acquired task for us we are grateful for your help in showing us the proper format.

As for the drill logs in question, the work was performed on mining claims S.133409-11, S.133412, S.133417, S.133574 in Shakespeare Township in the name of Broulan Reef Mines Ltd., forwarded to us by Mr. Hallock on February 12th, 1969.

Please bear with us and again thank you.

Yours very truly,

  
G. T. Stevens,  
Research Officer.

M<sub>PH</sub>/fv



ONTARIO  
DEPARTMENT OF MINES  
Mining Lands Branch

PARLIAMENT BUILDINGS  
TORONTO 2, ONTARIO  
Tel. 416 365-6139

April 10, 1969.

Resident Geologist,  
Ont. Dept. Mines,  
1349 LaSalle Blvd.  
SUDBURY, Ontario.

Dear Sir:

I am enclosing diamond drill core logs and maps  
submitted by the following to the Mining Recorder at Sudbury;

SHAKESPEARE  
TWP  
NB. ←

#73 - Broulan Reef Mines Ltd.  
Shakespeare Township.

#75 - Cominco Ltd.,  
Township 143.

Please add these to your files.

Yours very truly,

*G. T. Stevens*  
G. T. Stevens,  
Research Officer.

*This belongs to  
Sault Ste.  
Marie.*

GTS/fv

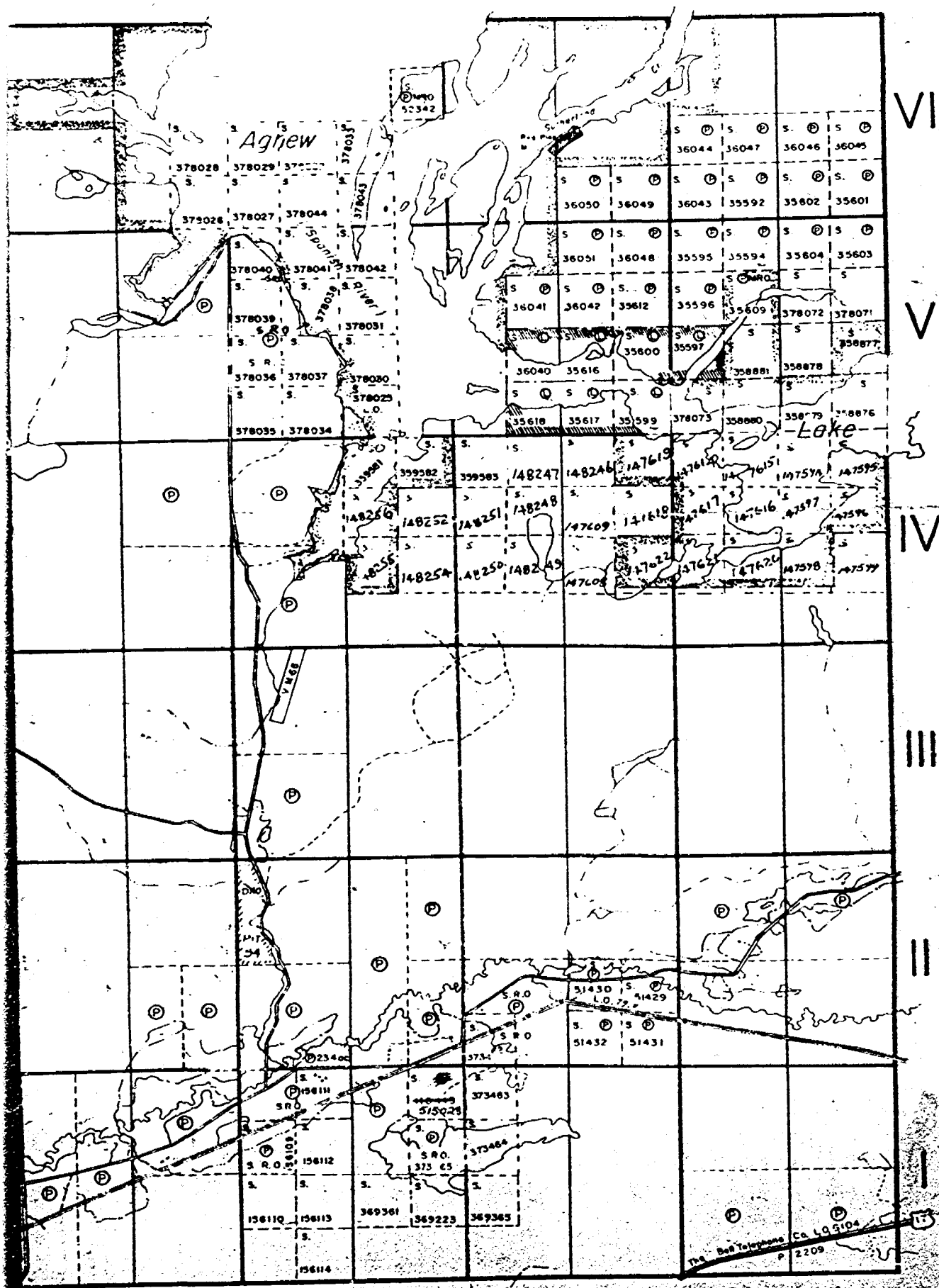
Dunlop Twp. (M.771)

# SHAKESPEARE

DISTRICT OF  
SUDBURY

SUDBURY  
MINING DIVISION

SCALE: 1-INCH 40 CHAINS



Baldwin Twp. (M.645)

## LEGEND

- |                       |        |
|-----------------------|--------|
| PATENTED LAND         | Ⓟ      |
| CROWN LAND SALE       | C.S.   |
| LEASES                | Ⓛ      |
| LOCATED LAND          | Loc.   |
| LICENSE OF OCCUPATION | L.O.   |
| MINING RIGHTS ONLY    | M.R.O. |
| SURFACE RIGHTS ONLY   | S.R.O. |
| ROADS                 |        |
| IMPROVED ROADS        |        |
| KING'S HIGHWAYS       |        |
| RAILWAYS              |        |
| POWER LINES           |        |
| MARSH OR MUSKEG       |        |
| MINES                 |        |
| CANCELLED             |        |

## NOTES

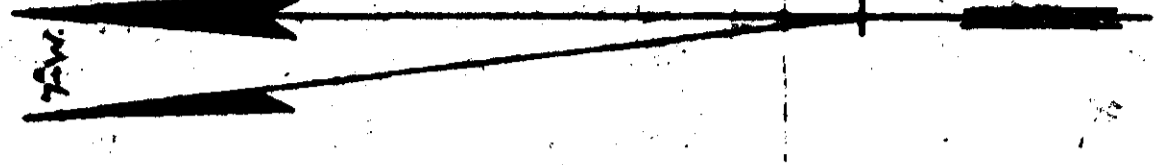
400' SURFACE RIGHTS RESERVATION AROUND ALL LAKES AND RIVERS.

AREA SHOWN THUS: W.P.L. A. No. -69.  
MINING CLAIMS WITHIN THIS AREA ARE FOR MINING RIGHTS ONLY

AREA SHOWN THUS: M.R.O.

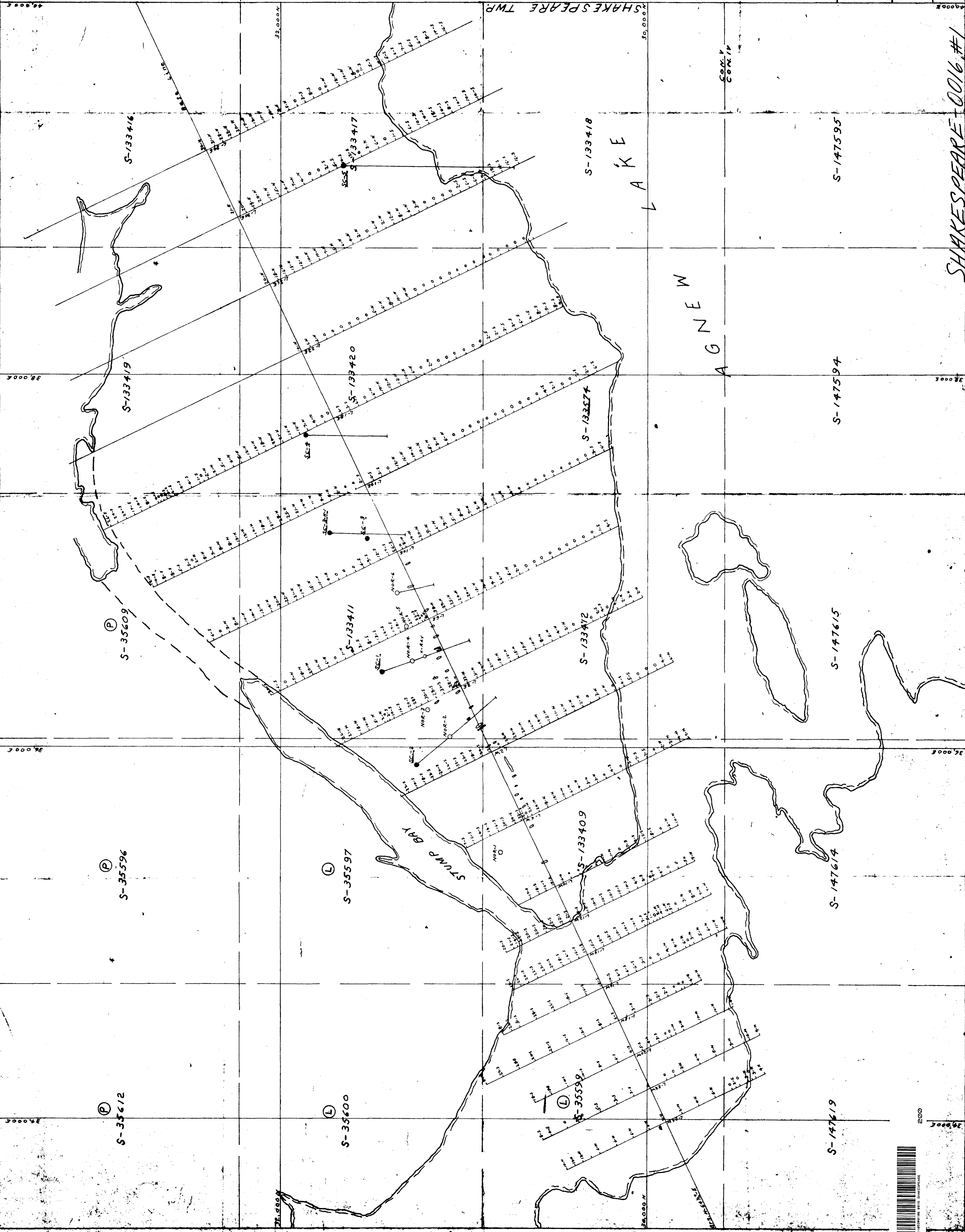
MINING LANDS  
DATE OF ISSUE  
JAN - 3 1974  
MINISTRY  
OF NATURAL RESOURCES

PLAN NO. M-1104



**SYMBOLS**

- Contour Line
- Pocket Line
- Radem Reading
- Diamond Drill Hole
- Trench
- Claim Number
- Lake Shore



**BROULAN REEF MINES LTD.**  
 SHAKESPEARE TWP  
 SUDBURY MINING DIVISION, ONT.

**RADEM SURVEY**  
 DRILL HOLE LOCATIONS.

SCALE: 1 inch = 200 feet  
 DRAWN BY: J.E.R.  
 DATE: APR. 25, 1948

SHAKESPEARE 0016 #1

