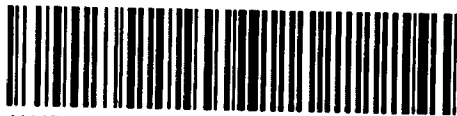


Diamond Drilling



41105SW0131 0010C1 HALLAM

010

Township of HALLAM

Report NO 15

Work performed by: Cleveland Copper Corporation

Claim NO	Hole NO	Footage	Date	Note
S 79739	C-1	475.0'	June/57	
	C-3	350.0'	June/57	
	C-4	472.0'	July/57	

TOTAL 3DH 1297 FT.

Notes:



DELCAN MINERALS Limited

NO. 2 COPY

Vertical Sec. HOLE NO C-1

True Brg. 165°

Looking North East

Scale 1"=40'

CONT

Lot 9

Lot 8

(P)

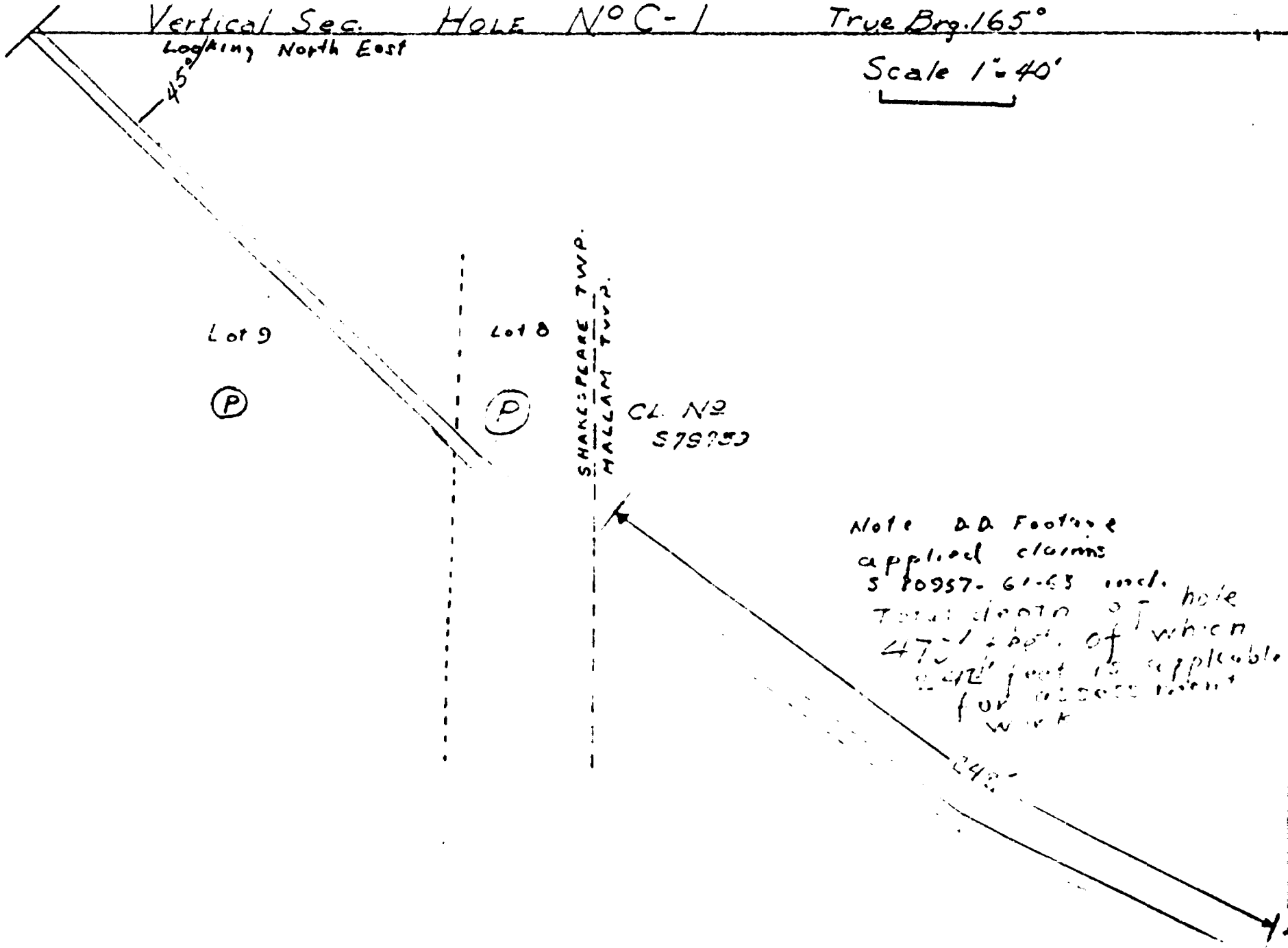
(P)

SHAKESPEARE TWP.  
MALLAM TWP.

CL. NO  
579753

Note D.D. Footage  
applied claims  
5 80957-61-63 incl. hole  
Total depth of hole  
475' of which  
242' foot is applicable  
for assessment  
work

242'



Direction 156° T.B.

PROPERTY DELCAN - CLEVELAND COPPER CORPORATION

HOLE NO. C-3

LATITUDE :	BEARING:	DIP: AT COLLAR -30°	STARTED: June 28/57	COMPLETED: July 5/57	
DEPARTURE:	V.D. 155'	H.D. 312'	DRILLED BY:		DEPTH: 350'
ELEVATION:	LOCATION: 296' N, 46° E, Station 'A'				LOGGED BY: Jack Kirk

FOOTAGE	SAMPLE FOOTAGES	SAMPLE No.	WIDTH FT.	ASSAY DATA			

0.0- 4.0	Casing
4.0- 82.0	Quartzite-Lost core 44-45,46-47,61.5-65,79.4-80.3 some alteration
82.0-101.5	Fine grained diabase.
101.5-102.0	Lost core
102.0-104.0	Altered greywacke
104.0-150.0	Light grey quartzite
150.0-152.0	Lost core
152.0-156.5	Dark badly fractured quartzite
156.5-157.5	Argillaceous quartzite
157.5-170.0	Light grey quartzite
170.0-173.5	Massive white quartzite
173.5-176.0	Light grey quartzite
176.0-193.0	Greywacke-some highly altered
193.0-196.2	Diabase
196.2-204.5	Highly altered greywacke
204.5-213.0	Sheared quartzite
213.0-227.0	Light grey quartzite
227.0-228.3	Lost core
228.3-233.0	Quartzite
233.0-238.0	Sheared and altered greywacke
238.0-243.0	Light grey quartzite
243.0-244.2	Lost core
244.2-246.0	Quartzite
246.0-247.3	Lost core
247.3-249.3	Quartzite
249.3-251.0	Lost core
251.0-254.0	Dark grey quartzite
254.0-255.0	Lost core
255.0-259.0	Dark grey quartzite
259.0-260.0	Lost core
260.0-273.0	Dark grey quartzite
273.0-274.0	Lost core
274.0-280.0	Quartzite
280.0-282.0	Lost core
282.0-288.5	Dark grey quartzite
288.5-299.8	Highly altered greywacke
299.8-350.0	Grey quartzite

END OF HOLE

JACK KIRK

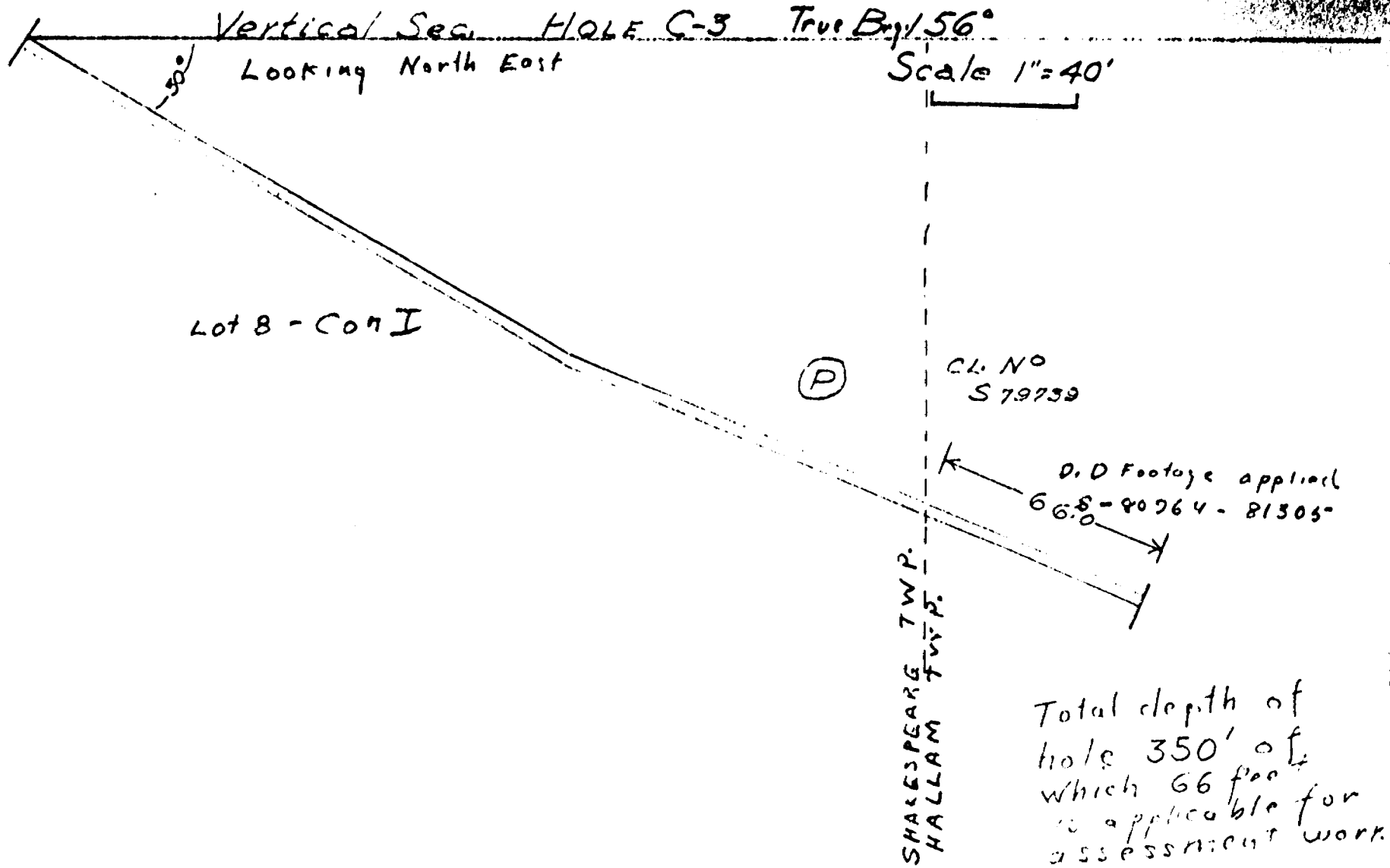
**DUPLICATE COPY  
POOR QUALITY ORIGINAL  
TO FOLLOW**





DELCAN MINERALS Ltd.

No 2 copy













Vertical Sec.

HOLE N° C-4

True Dip 55°

Looking North East

Scale: 1" = 40'

35°

SHAKESPEARE TWP.  
HALLAM TWP.

(D)

CL. N°  
S79739

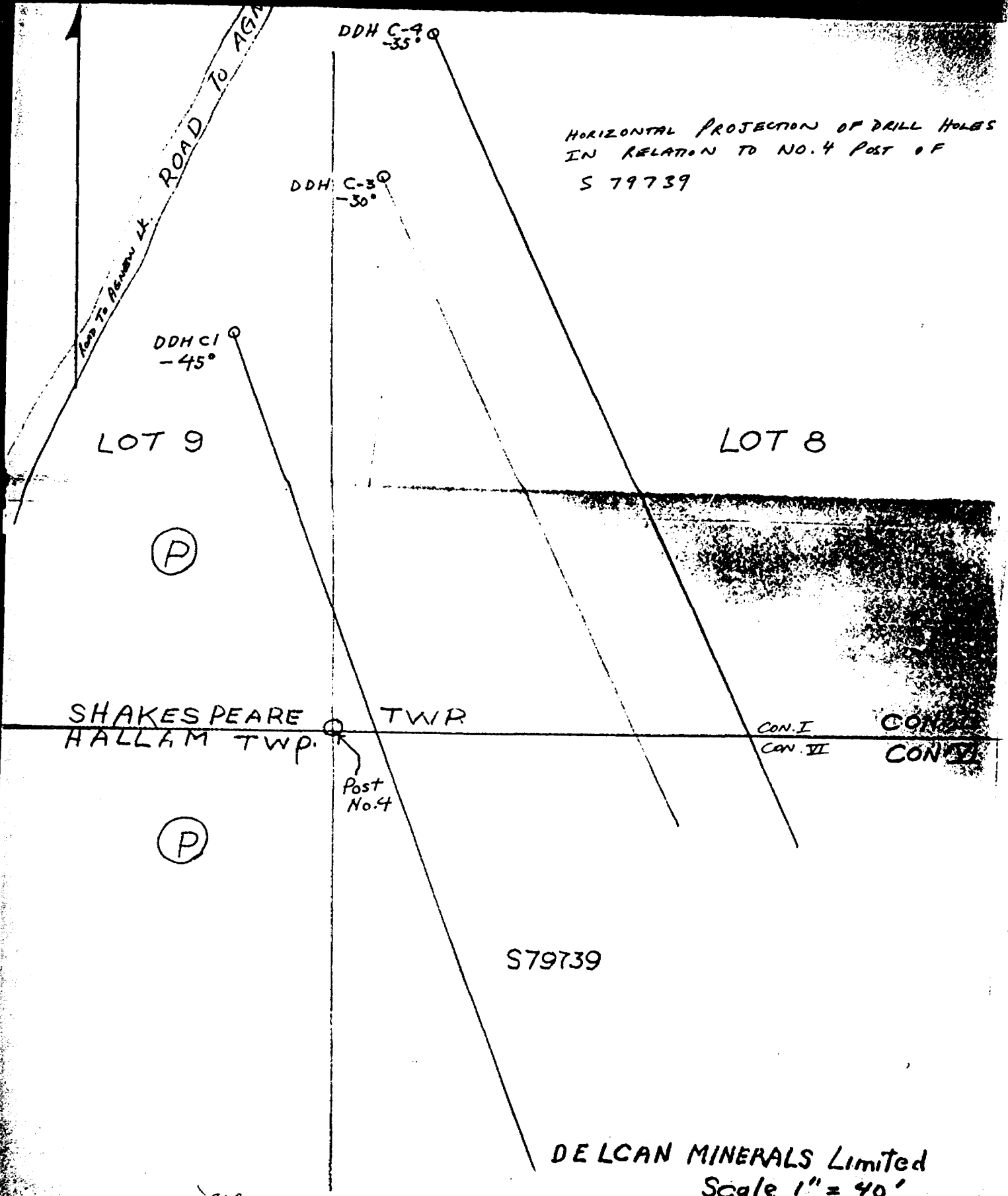
D.P. Footage  
Applied S 81305-67

Lot 8 Con I

100'

Total depth  
of hole 472  
feet of which  
100 feet is  
applicable.

HORIZONTAL PROJECTION OF DRILL HOLES  
IN RELATION TO NO. 4 POST OF  
S 79739



LOT 9

LOT 8

(P)

SHAKESPEARE TWP.  
HALLAM TWP.

CON. I  
CON. VI  
CON. VII

Post No. 4

(P)

S79739

DELCAN MINERALS Limited  
Scale 1" = 40'

Surveyed & Drawn by J.B. Kirk

Handwritten notes and signatures at the bottom left, including 'LWB' and '21'.

# DELCAN MINERALS Limited

PLAN SHOWING GROUPING OF CLAIMS

WORK DONE ON 579739 AS PER ATTACHED

1" = 20 chains

