



4106NE0002 W9670-00105 CREIGHTON

010

ASSESSMENT REPORT
INCO LIMITED DIAMOND DRILLING
CREIGHTON TOWNSHIP
NTS: 41-I-06
NOVEMBER 23, 1994 TO JANUARY 31, 1995

E.F. Makela
Inco Limited - Field Exploration
Copper Cliff, Ontario
May 21, 1996

A handwritten signature in black ink, appearing to be 'E.F. Makela', followed by a horizontal line extending to the right.

HEATH & SHERWOOD DRILLING (1986) INC.

FORAGE HEATH & SHERWOOD (1986) INC.

P.O. BOX 998
34 DUNCAN AVE. NORTH
KIRKLAND LAKE, ONTARIO, CANADA
P2N 3L3

INVOICE

Inco Exploration & Technical Services Inc.
Engineering Building
Highway 17 West
Copper Cliff, Ontario
P0M 1N0

Invoice No.: 4756
Date : November 30/ 94
D. O. No. : 1296

Attention: Mr. Wayne Garland

Terms: Net 30 Days or as per Contract

November 16 - 30, 1994

Gertrude Property Shallow Drilling West Of The Creighton Mine

Drilling

# 93617	0	130	130	13.70	1 781.00	
# 93619	0	150	150	13.70	2 055.00	
# 93618	0	500	500	13.70	6 850.00	
	500	667	167	13.70	2 287.90	
# 93620	0	260	260	13.70	3 562.00	
# 93621	0	130	130	13.70	1 781.00	
# 93624	0	100	100	13.70	<u>1 370.00</u>	\$ 19 686.90

Acid Tests

# 93617	@ 112					
# 93619	@ 132					
# 93618	@ 8, 150, 250, 652					
# 93620	@ 250					
# 93621	@ 130					
# 93624	@ 6, 90	= 10 Tests		55.00		550.00

Special Operations

November 18	Orientation	48			
November 21	Orientation	4			
November 22	Orientation	<u>2</u>	54 Man Hours	21.50	1 161.00

Materials

1 Only BW shoe # 2R0996D		132.00	
5 Only BW 2 Ft. Casing	35.00	<u>175.00</u>	
		307.00	
Plus 10%		<u>30.70</u>	<u>337.70</u>

Dec 12/94 WJ
19403-10124

\$ 21 735.60

Plus 7% G.S.T. (R102312840)

S.C. 9475

1 521.50

TOTAL INVOICE

cl exp 553

\$ 23 257.10

ok for payment
R. K. White

NUMBER MINE NAME CODE LEV. DEPTH AZ DIP SYS LAT DEP ELEV DATE

 934180 GERTRUDE 509 0 657 0 -9000 1 384056 357817 995 1194

1. -- M.N. NAPOLI DRILLED BY H&S ERS-1. HOLE DRLD TO EVALUATE SULPHIDE &
2. -- GET A MILL TEST SAMPLE. CASING LEFT IN. DRLD ON 12W @ 2800.
3. -- DRLD BY HEATH & SHERWOOD. STARTED 11/22/94 & COMPLETED 11/24/94.
4. -- ALL CORE SAMPLED FOR CU/NI/TPM ASSAY. SPECIMENS @ 10 FOOT INTERVALS
5. -- COLLECTED & STORED AT INCO'S LITTLE STOBIE CORE FARM. DRILLED ON
6. -- INCO PATENTED MINING LANDS, SOUTH HALF LOT 3, CONC.1, CREIGHTON TWP.


***** TESTS ***** *** METERS ***

8	-8900
150	-9000
250	-9000
657	-9000

*** LOG ENTRIES ***

DEPTH	DIPP	SAMP #	CU	NI	TPM	ROCK	DESCRIPTION
****	****	*****	**	**	***	****	*****
0.0							COLLAR
9.0	9.0						CASNG OVERBURDEN
24.0	15.0	MJ295027	0.02	0.02	0.000	GGNR #R00065 ANG70 SUL	CCR, MASS GGNR CNTNS BLBY, BLUISH QTZ AND LG BIOT XTLS TO 4MM. W/LY MTC. W/LY MNZD W TR PO+CP AS FN SCAT SPKS (INSU).
40.4	16.4	MJ295028	0.04	0.04	0.000	GGNR #R00090 ANG35 SUL001	AS ABV BUT MNZD WITH 1%PO+0.5 %CP+TR PY AS DISCRETE DISS BLES UP TO 1.4CM SIZE LOCY ENCLING SILICATES, CUT BY SOME FRACS AT 30 DEG TO CAX WHICH ARE COATED WITH CHLR AND MINOR CTE.
58.2	17.8	MJ295029	0.04	0.04	0.000	GGNR #R00065 ANG25 SUL	AS ABV TO 24.0 FT BUT THIS NR CNTNS PARTIALLY DIGESTED INCLS OF GRDRIC MATERIAL AND IS CUT BY MANY FN CHLC(+CT+QZ+FP) SLPS ORIENTED 5-20 DEG TO CAX
77.0	18.8	MJ295030	0.02	0.02	0.000	GGNR #R00075 ANG35 SUL	AS ABV TO 24.0 FT. W/LY-MOBY MTC. MMV. CUT BY SOME CHLC SLPS AT 30 DEG TO CAX.
92.9	15.9	MJ295031	0.02	0.02	0.000	GGNR #R00100 ANG SUL	AS ABV.
97.9	5.0	MJ295032	0.12	0.08	0.000	GGNR #R00100 ANG SUL003	AS ABV TO 40.4 FT WITH 30%PO+TR CP AS FN SCAT BLEBS. W/LY MTC
116.6	18.7	MJ295033	0.02	0.02	0.000	GGNR #R00070 ANG25 SUL	AS ABV BUT THIS NR IS BROWER COLORED (NOT AS STRY APPHTZD) AND CNTNS SECTS OF PK GRIC MATERIAL. LOCY CUT BY MANY FN IREG FRACS COATED WITH QZ+CTE +CHLR.

LOGGED BY:
 MAURIZIO NAPOLI
 Start Date: 11/23/94
 Completion Date: 11/26/94



BOREHOLE 936190

DEPTH	DIFF	SAMP #	CU	NI	TPM	ROCK	DESCRIPTION
****	****	*****	**	**	***	****	*****
123.9	7.3	MJ296034	0.10	0.14	0.000	QSNR	#R00095 ANG40 SUL004 AS ABV BUT LOGY MNZD W TR CP + 4% PO AS DISCRETE, DISS BLS OF INSUL. MOST OF THESE BLS ARE CONCENTRATED IN A SECTION OF CORE BETWEEN 121 & 122.5 FT
143.0	19.1	MJ296035	0.04	0.02	0.000	QSNR	#R00060 ANG30 SUL AS ABV TO 77.0 FT. THIS UNIT IS CUT BY NUM FN FRACS AT 25-35 DEG TO CAX WHICH ARE COATED WITH WHT QTZ+CTE AND CHLR.
161.9	18.9	MJ296036	0.02	0.02	0.000	QSNR	#R00060 ANG25 SUL AS ABV WITH A SECT OF VERY CGR QTZOSE MTGB-GRDR (PROBABLY A LG INCL IN THE NR). THIS UNIT IS ALSO BROKEN UP QUITE BADLY BY THE QTZ-CTE-CHLR SLPS AT 20-25 DEG TO CAX.
169.0	7.1	MJ296037	0.06	0.38	0.000	QSNR	#R00090 ANG45 SUL006 AS ABV TO 123.9 FT. MNZD WITH EXPO+PN. PO AS SCAT BLOBS W PINDS OF PN.
183.3	14.3	MJ296038	0.34	1.08	0.000	IBNR	#R00080 ANG SUL019 AS ABV BUT THIS UNIT CNTNS APPROX 60% FGR AMPC MTGB INCLSTHE MTX TO THE INCLS CONSISTING OF CGR QSNR, FGR BSNR AND RGD1 PO,PN & CP (19% PO+ <1% CP + PN). ALSO CNTNS SOME BLK, MOR, UM INCLS (TS @ 178.5 FT OF MGR-CGR, FRESH PERIDOTITE WITH 40% MODAL, RND OL XTLS).
190.0	6.7	MJ296039	0.18	0.28	0.000	SLNR	#R00090 ANG55 SUL003 FGR, AMPC MTGB INCLS IN A FGR, MODY BIOTIC SLNR MTX. APPROX 3% PO+<1% CP.
195.2	5.2	MJ296040	0.18	2.08	0.000	SLNR	#R00085 ANG45 SUL055 AS ABV BUT THE MTX CONSISTS BOTH PATCHES OF FGR SLR AND CGR QSNR. THE SLP OCCURS AS S EMI-MASS, RGD1 PO+PN HOSTING INCLS OF FGR AMPC MTGB.
212.1	16.9	MJ296041	0.46	0.50	0.000	SLNR	#R00080 ANG60 SUL010 MIXTURE OF FGR-MOR, BIOTIC SLNR AND CGR, QSNR?SLNR? (TS @ 202.8 OF CGR, POIKIC TXTRD, BIMODAL PLAG SLNR OR BSNR) WITH HFLS MTGB INCLS. MNZD WI 9% PO AS RGD1 MINZ AND 1.5% CP AS BLS AND STRKS SCAT TRGT.
216.8	4.7	MJ296042	0.32	2.10	0.000	SLNR	#R00065 ANG50 SUL055 AS ABV TO 195.2 FT. THE PN SEEMS TO FORM FN WISPY HALOS SURROUNDING THE HFLSD INCLS. OBSERVE A M GRN COL UM INCL AT 215.5 TO 216.0 FT.

BORE-HOLE 936180

DEPTH	DIFF	SAMP #	CU	NI	TPH	ROCK	DESCRIPTION
*****	***	*****	**	**	***	****	*****
221.4	4.6	MU296043	0.16	0.38	0.000	SLNR	*R02060 ANG30 SUL003 AS ABV BUT W/LY MNZD. MOSTLY CGR GENR AND BSNR (TS AT 217.8 FT MAY BE A CGR, SUB-POLYIC TWO PX GB OR CGR, BSNR).
226.0	4.6	MU296044	0.18	1.50	0.000	SLNR	*R02085 ANG35 SUL027 AS ABV TO 195.2 FT. SOME SFCTS OF THIS UNIT ARE NOT AS WELL MNZD. LOCY CUT BY 30 DEG CHLC+ QTZ+CTE SLPS. MOST OF THE MTX MATERIAL CONSISTS OF EITHER CGR, BSNR OR SEMI MASS RGD1 PO
232.3	6.3	MU296045	0.12	0.24	0.002	SLNR	*R02075 ANG15 SUL003 AS ABV BUT MORE W/LY MNZD.
242.0	9.7	MU296046	0.98	0.58	0.000	SLNR	*R02060 ANG45 SUL018 AS ABV BUT THIS UNIT IS MNZD W 15% PO AS RGD1 SULP + 3-4% CP AS DISS. RGD BLBS, STKS AND STRS. STILL SEE SOME PATCHES OF COARSER GRAINED BSNR AS MTX
246.1	4.1	MU296047	0.22	0.84	0.000	SLNR	*R02075 ANG30 SUL017 AS ABV BUT THIS UNIT ONLY CNTNS TR CP. THESE UNITS ARE ALL CUT BY NUM CHLC SLPS AT 15-30 AND 50-65 DEG TO CAX.
259.7	13.6	MU296048	0.08	0.08	0.000	SLNR	*R02070 ANG20 SUL002 AS ABV. APPROX 20-30% OF THIS UNIT IS FOR SLNR; THE REMAIND R BEING FOR MTGB, HFLS AND AMP AT 254-255 FT THE CORE IS BRKN BY SEVERAL FRACS PRL TO CAX. MNZD W SOME COARSE BLBS PO+TR CP.
270.0	10.3	MU296049	0.10	0.12	0.000	SLNR	*R02085 ANG25 SUL004 THE MTX IN THIS UNIT IS GEN THE SAME BUT DESERVE MUCH MORE AMPHIC INCLS WHICH HAVE A POKADOT TXTR (FELSIC CLOTS). MNZD W 3-4% PO AND TR CP AS STKY BLBS, BNDS AND FN IREG STRS. THE AMPIC INCLS ARE NOT NTC.
282.9	12.9	MU296050	0.08		0.000	AMPH	*R02085 ANG30 SUL AS ABV BUT WITH V MINOR SLR MTX. MOSTLY GEN AMPH FULL OF WH SPLOTCHES TRGT. AT 272.8 TO 279.7 FT THE CORE IS QUITE BA ILY BRN DUE TO SEVERAL FRAC SETS AT 10, 30 AND 60 DEG TO CAX. GEN UNMNZD.
295.3	12.4	MU296051	0.04		0.001	AMPH	*R02075 ANG50 SUL AS ABV.
305.7	10.4	MU296052	0.18	0.02	0.000	SLNR	*R02085 ANG35 SUL025 AS ABV TO 259.7 FT. THIS SLR IS FOR AND COMPLETELY PACKED WITH SMALL AMPIC HFLSD INCLS. MNZD W <1% CP AND TR PO.

BOREHOLE 936190

DEPTH	DIFF	SAMP #	CU	NI	TFM	ROCK	DESCRIPTION
*****	****	*****	**	**	***	****	*****
322.6	16.9	MJ296053	0.16	0.04	0.000	SLNR	*R00095 ANG55 SUL AS ABV. TS AT 316.1 FT APPEARS TITELY TO BE SOUTH RANGE SLNR POKD W AMPIC, HFLSD INCLS BUT IN TS CONSISTS OF LG DENUCLEAT ED PLAG'S AND STURBY, ANML-SRL OPX XTLS IN FLOOD QTZ AND K-SPAR; THIS LOOKS LIKE A GOOD ANATEXITE-MAY BE THE SOUTH RANGE EQUIVALENT OF MTBX-GRBX. MNZD W TR CP (+ VERY MINOR PO) AS FN DISS INSU SCAT TRGT THIS UNIT. CP ALSO ACCOMPANIES QTZ +CTE AS FRAC FILLINGS.
326.4	13.8	MJ296054	0.04		0.000	SLNR	*R00090 ANG50 SUL AS ABV WITH SOME LG AMPC INCLS TO 1.5 FT SIZE. THE CORE IN T HESE UNITS IS VERY GOOD.
351.2	14.8	MJ296055	0.10	0.06	0.003	SLNR	*R00095 ANG75 SUL AS ABV. LOCY MORE STRY MNZD W FN DISS CP AS INSU & FRAC FILL
363.2	12.0	MJ296056	0.02		0.000	SLNR	*R00095 ANG60 SUL AS ABV TO 372.6 FT. MAM. TS AT 354.0 FT OF SLNR-SR MTBX PACKED W PARTIALLY DIGESTED, HFLS INCLS, WKLY POKILITIC, FLOOD QTZ AND K-SPAR.
391.5	18.3	MJ296057	0.02		0.002	AMPH	*R00090 ANG60 SUL MOSTLY PALE GRN, FOR AMPC ROCKS WITH SECTS OF BIOT-FELD PORPHYRY. TS AT 367.5 FT OF STR
399.6	18.1	MJ296058	0.02	0.02	0.000	AMPH	*R00095 ANG35 SUL AS ABV BUT CNTNS SECT AT 395.4 TO 397.6 FT OF STRY BIOTIC FELD PRPH. TS OF PRPH AT 398.3 FT SHOWS SOME GOOD PARTIAL ME LT FFATURES; I.E: DENUCLEATED FELD AND FLOOD QTZ AND K-SPAR. CUT BY MINOR QTZ-CHLR SLPS AT 30 & 50 DEG TO CAX
416.7	17.1	MJ296059			0.000	MTBX	*R00090 ANG70 SUL SIMILAR TO ABV TO 363.2 FT. IN TS AT 400.8 FT CONSISTS OF LG CLOTS OF AMPH (MOSTLY AFTER CPX-SOME OPX RELICTS) AND DENU CLEATED PLAG IN FLOOD K-SPAR AND QTZ. THIS ROCK DOES NOT APPEAR TO HAVE BEEN FRAGMENTAL BUT IS MORE ACCURATELY DESCRIB ED AS A ANATEXITE.

		BURSHOLE 936180						
DEPTH	DIFF	SAMP #	CU	NI	TPM	ROCK	DESCRIPTION	
****	****	*****	**	**	***	****	*****	
427.0	10.3	MJ296060			0.000	AMPH	#R00095 ANG30 SUL MED GRN COLORED, MGR AMPH IS CUT BY NUP QTZ+CHL+FP+CHL HEALED FRACS AT 25-35 DEG TO CAX. GEN UNMZD. WMLY TO NON- MTC. LOCY CNTNS SMALL CLOTS OF BLUISH FLOOD QTZ INDICATING T HIS ROCK IS STILL STRY THERMAL LY METAMORPHOSED.	
447.8	20.8	MJ296061	0.02	0.02	0.000	AMPH	#R00075 ANG30 SUL AS ABV. LOCY THIS UNIT IS BRKN DUE TO FN CHLC SLPS AT 10-25 DEG TO CAX (CORE QUITE BADLY BRKN AT 434.0 TO 437.0 FT.	
462.0	14.2	MJ296062	0.06	0.06	0.004	MTGB	#R00030 ANG25 SUL000 SIMILAR TO ABV AT 416.7 FT BUT LESS STRY THERMALLY METAMOR- PHOSED. THIS UNIT IS CHARACTER IZED BY 10% FN BIOT TRGT WITH WML STRS OF QTZ+FP+MINOR CTE- SOME OF THESE SLPS ARE CHLC AT 15-25 DEG TO CAX. GEN UNMZD AND NON-MTC. SOME OF THE THICKER QTZ-FP STRS HAVE TR FN CP+PY MINZ.	
475.6	13.6	MJ296063	0.02		0.000	MTGB	#R00035 ANG50 SUL AS ABV. IS AT 474.0 FT OF PARTIALLY MELTED, HRNFLSD FW META-GRD-QZGB CONSISTS OF STRY APMZD PY AND MDDY DENUCLEATED PLAG WITH FLOOD QTZ AND SOME K-SPAR. LOCY SEE CHARNOKITIC TXTR WITH SMALL GUMDROP OPX XTLS IN FLOOD QTZ. GEN UNMZD. NON-MTC.	
495.0	9.4	MJ296064			0.000	AMPH	#R00090 ANG30 SUL FOR AMPC MTGB DOES NOT CNTN AS MUCH BIOT AS UNIT ABV. CUT BY SPIDERY NETWORK OF WML STRS & QTZ-FP-CHL SLIPS AT 15-30 DEG TO CAX.	
498.6	13.6	MJ296065			0.000	AMPH	#R00075 ANG25 SUL AS ABV	
514.4	15.8	MJ296066			0.000	AMPH	#R00065 ANG30 SUL AS ABV TO 427.0 FT. MGR. MED GRN AMPH CNTNS 7-9% MGR BIOT TRGT AND LOCY SOME BLUISH QTZ FLOODS TO 1 CM SIZE. THIS UNIT IS UNMZD AND GRADCS FROM WML Y MTC AT TOP TO MDDY MTC AT BOTTOM.	
521.2	6.8	MJ296067			0.000	AMPH	#R00025 ANG10 SUL AS ABV BUT CUT BY MANY CHLC SLPS AT 5-15 DEG TO CAX SO THAT CORE IS BADLY BRKN FROM 514.4 TO 519.4 FT. THIS UNIT IS UNMZD AND STRY MTC.	

BOROHOLE 936180

DEPTH	DIFF	SAMP #	CU	NI	TPM	ROCK	DESCRIPTION
*****	****	*****	**	**	***	****	*****
539.8	18.6	MJ296668			0.000	MTGB	*R00095 ANG25 SUL AS ABV TO 475.6 FT. HOWEVER, IN TS AT 529.6 FT THIS MTGB IS PERVASIVELY HORNFELSED BUT CONTNS NO PARTIAL MELT FEATURES GEN UNMNZD AND WPLY MTC.
557.7	17.9	MJ296669			0.000	MTGB	*R00095 ANG40 SUL AS ABV. TS AT 552.0 FT IS SAME AS TS AT 529.6 FT. THE OPAQUE MIN'S ARE ALWAYS ASSOC WITH THE AMPH CLOTS.
567.0	9.3	MJ296670			0.000	MTGB	*R00090 ANG25 SUL AS ABV WITH SOME SECTS OF FGR AMPH. CUT BY SOME CHLC SLPS AT 15-25 DEG TO CAX.
581.0	14.0	MJ296671			0.000	MTGB	*R00095 ANG45 SUL AS ABV.
596.7	15.7	MJ296672	0.02		0.000	GN	*R00090 ANG30 SUL ALTERNATING SECT OF GRN. FGR AMPH AS ABV AND PORPHIC FELDIC GN. THESE UNITS APPEAR TO BE REXTALLIZED BUT NOT MELTED.
615.4	18.7	MJ296673	0.02	0.02	0.000	AMPH	*R00100 ANG70 SUL AS ABV BUT WITH FAR LESS FELDIC GN SECT. AMPH IS FGR. MASS. CONTNS NO BIOT, IS NON-MTC AND MM W TR PY+MINOR PO. CUT BY SPIDERY NETWORK OF VERY FN WH STRS.
629.7	14.3	MJ296674			0.000	AMPH	*R00090 ANG10 SUL AS ABV BUT VERY MINOR FELD GN AT 627.0 TO 629.7 FT THE CORE IS BRKN DUE TO NUM CHLC SLPS AT 5 TO 15 DEG TO CAX.
644.4	14.7	MJ296675		0.02	0.000	AMPH	*R00090 ANG10 SUL AS ABV BUT GEN CORE IS NOT AS BRKN
658.2	13.8	MJ296676	0.02	0.02	0.000	AMPH	*R00100 ANG SUL MASS LT GRN COL. MGR AMPH FULL OF WH SPKS DUE TO STRY SAUS'D PLAG XTLS (STRY ALTD SUROPHIT IC TXTRD MTGB) MNZD W TR FN DISS PY. NON-MTC
667.0	8.8	MJ296677		0.02	0.000	AMPH	*R00065 ANG10 SUL AS ABV BUT FROM 658.6 TO 659.5 FT THE CORE IS BRKN DUE TO NUM CHLC SLPS AT 5-10 DEG TO CAX. FOH @ 667.0 FT. ACCT NUM: 19403 - 10124. ACCOUNT NUMBER 19403-10124

*****END OF BOROHOLE*****

HEATH & SHERWOOD DRILLING (1986) INC.

FORAGE HEATH & SHERWOOD (1986) INC.

P.O. BOX 998
34 DUNCAN AVE. NORTH
KIRKLAND LAKE, ONTARIO, CANADA
P2N 3L3

INVOICE

Inco Exploration & Technical Services Inc.
Engineering Building
Highway 17 West
Copper Cliff, Ontario
P0M 1N0

Invoice No.: 4756
Date : November 30/ 94
D. O. No. : 1296

Attention: Mr. Wayne Garland

Terms: Net 30 Days or as per Contract

November 16 - 30, 1994

Gertrude Property Shallow Drilling West Of The Creighton Mine

Drilling

# 93617	0	130	130	13.70	1 781.00
# 93619	0	150	150	13.70	2 055.00
# 93618	0	500	500	13.70	6 850.00
	500	667	167	13.70	2 287.90
# 93620	0	260	260	13.70	3 562.00
# 93621	0	130	130	13.70	1 781.00
# 93624	0	100	100	13.70	<u>1 370.00</u>
					\$ 19 686.90

Acid Tests

# 93617	@ 112				
# 93619	@ 132				
# 93618	@ 8, 150, 250, 652				
# 93620	@ 250				
# 93621	@ 130				
# 93624	@ 6, 90	= 10 Tests		55.00	550.00

Special Operations

November 18	Orientation	48			
November 21	Orientation	4			
November 22	Orientation	<u>2</u>	54 Man Hours	21.50	1 161.00

Materials

1 Only BW shoe # 2R0996D		132.00
5 Only BW 2 Ft. Casing	35.00	<u>175.00</u>
		307.00
Plus 10%		<u>30.70</u>
		<u>337.70</u>

*Dec 12/94 WJ
19403-10124*

\$ 21 735.60

Plus 7% G.S.T. (R102312840)

S.C. 9475

1 521.50

TOTAL INVOICE

cl exp 553

\$ 23 257.10

*ok for payment
R. B. Whelsh*

NUMBER MINE NAME CODE LEVEL DEPTH AZ DIP SYS LAT DEP FLEV DATE

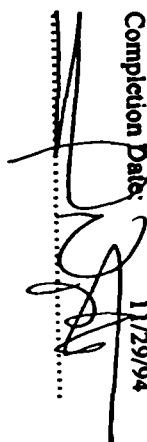
 936260 GERTRUDE 509 0 260 0 -9000 1 384090 357919 993 1194
 1. -- M.G. NAPOLI, DRILLED BY H&S BBS-1. DRLD TO OUTLINE SULPHIDE & GET
 2. -- MIN TEST SAMPLE. CASING PULLED. DRLD ON 11W SECTION @ 255 S.
 3. -- DRLD BY HEATH & SHERWOOD. STARTED 11/29/94 & COMPLETED 11/29/94.
 4. -- ALL CORE SAMPLED FOR CU/NI/TPM ASSAY. SPECIMENS @ 10 FOOT INTERVALS
 5. -- COLLECTED & STORED AT INCO'S LITTLE STORIE CORE FARM. DRILLED ON
 6. -- INCO PATENTED MINING LANDS, SOUTH HALF LOT 3, CONC.1, CREIGHTON TWP.
 ***** TESTS ***** *** WEDGES ***

260 -9000

*** LOG ENTRIES ***

DEPTH	DIFF	SAMP #	CU	NI	TPM	ROCK	DESCRIPTION	
*****	*****	*****	**	**	***	****	*****	
0.0							COLLAR	
9.6	9.6						CASING OVERBURDEN	
14.4	4.8	MJ296078			0.000	QGNR	#R00085 ANG SUL001 CASING CORE- BX SIZE.	
34.0	19.6	MJ296079	0.02	0.02	0.000	QGNR	#R00090 ANG65 SUL001 AS ABV. MASS. CGR. MED TO DK GRN COLORED QGNR IS CHARACTERI ZED BY 10-12% CGR. BLUSH. OPA LESCENT FLOOD QTZ. MNZD MKLY WITH 1% PO+ TR CP AS DISS. VERY RDG BLBS OF INSU GEN <.5CM SIZE. MKLY MTC.	
50.5	16.5	MJ296080	0.02		0.000	QGNR	#R00090 ANG50 SUL AS ABV. BLUE QTZ CONTENT SEEMS HAS INCROD TO 15-17%. M.V.M W TR PO + TR CP.	
58.2	7.7	MJ296081	0.04	0.06	0.000	QGNR	#R00095 ANG SUL002 AS ABV WITH SOME BLUE QTZ CLOTS TO 1.5 CM SIZE.	
78.0	19.8	MJ296082	0.02	0.02	0.000	QGNR	#R00085 ANG35 SUL001 AS ABV BUT WITH SOMEWHAT LOWER QTZ CONTENT AND 10% BIOT PRPH RBLSTS TO 0.4CM SIZE. CUT BY NUM CHLC SLIPS AT 25-35 DEG TO CAX.	
90.6	12.6	MJ296083			0.000	GRGN	#R00095 ANG SUL PK. CGR GIGN CONSISTS OF ALTERNATING IREG BNDIS OF FGR APLITIC ROCK WITH BIOT-KSPAR- PLAG-QTZ GN. MW WITH TR FN BLBY PO+CP.	
110.2	19.6	MJ296084			0.02	0.000	QGNR	#R00090 ANG55 SUL AS ABV TO 78.0 FT BUT CNTNS SOME SECTS OF FINER GRAINED SECTS OF QGNR.
126.0	15.8	MJ296085			0.000	QGNR	#R00085 ANG70 SUL AS ABV.	
144.5	18.5	MJ296086			0.000	QGNR	#R00100 ANG SUL AS ABV TO 34.0 FT. SOME OF THE LGER BLUE QTZ FLOODS ARE UP TO 1CM SIZE AND ENCLOSE LG OPX XTLS WHICH ARE UP TO 0.3CM LONG. M.V.M. THIS UNIT IS EQUIGEN.R.	

LOGGED BY:
 MAURIZIO NAPOLI
 Start Date: 11/28/94
 Completion Date: 11/29/94



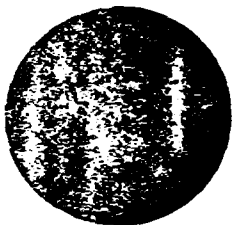
SCHEDULE 936200

DEPTH	DIFF	SAMP #	CU	NI	TPM	ROCK	DESCRIPTION
*****	****	*****	**	**	***	****	*****
158.0	13.5	MJ296087			0.000	OSNR	#R01100 ANG65 SUL AS ARV. IN THE LAST 0.5 FT AT THE BOTTOM OF THIS UNIT THE AVG GRAIN SIZE INCREASES APPRECI- ABLY FROM 2-3MM TO 1MM (LOOKS LIKE A CHILL MARGIN).
164.2	6.2	MJ296088	0.02	0.16	0.000	SLNR	#R02100 ANG SUL002 ALTERNATING PATCHES OF OSR OSNR, FOR SLNR (POSS A VERY HIGH GRADE MTGB PM) AND MTGB. THE MTGB IS PERMEATED WITH R001 PO (APPROX 2%).
174.0	9.8	MJ296089	0.74	1.22	0.000	SLNR	#R03095 ANG60 SUL017 ALTERNATING PATCHES OF FGR, GREY MTGB, BNR AND HIGH PM. BECAUSE THIS UNIT IS SO INCL PACKED, IT IS DIFFICULT TO SEE THE BORDERS OF THE INCLS. MNZD W 15% PO+ 2% CP AS SEMI MASS R001 BLBS WITH DISCRETE BLBS OF CP. APPROX 10% OF THIS UNIT APPEARS TO BE MORITE.
177.7	3.7	MJ296090	0.10	4.06	0.000	MASU	#R00100 ANG60 SUL085 GEN MASS FO WITH OF FN RIBBONS OF PN (APPROX 4%) WITH SOME INCLS OF MTGB AND AMPH. INCLS HAVE GOOD SHARP BOUNDARIES.
195.6	17.9	MJ296091	0.54	1.42	0.000	SLNR	#R02100 ANG50 SUL011 AS ARV 174.0 FT EXCEPT THIS UNIT CNTNS MORE CP (2-3%) AS LG R00 BLBS TO 0.5CM SIZE ALWAYS ASSOC WITH PO (8%). STILL CNTNS PATCHES OF BIOTIC FOR SLNR?GREY MTGB PM?
204.2	8.6	MJ296092	0.22	1.10	0.000	SLNR	#R03095 ANG60 SUL009 AS ARV BUT SEEMS TO CNTN MORE AMPHIC AND MTGB-LESS MTX. ALSO DIFF IS THE CHARACTER OF THE SULPS WHICH OCCUR AS R001 AND STKS AND VNS.
212.0	7.8	MJ296093	0.12	1.22	0.000	AMPH	#R00075 ANG45 SUL007 AMPH MNZD W 7% R001 PO TRGT. SEEMS TO BE NO MTX EXCEPT FOR SULP IN THIS UNIT. THE AMPH IS PALE GEN COLORED WITH F WH SPKS (STRY ALTD FP XTLS).
227.0	15.0	MJ296094	0.04	0.12	0.000	AMPH	#R03090 ANG35 SUL AMPH AS ARV BUT GEN UNMNZD OR MNZD VRY WGLY W TR PO+CP.
245.6	19.6	MJ296095	0.02	0.06	0.000	AMPH	#R00070 ANG55 SUL AS ARV WITH A SECT OF FGR GREY MTGB. THIS UNIT IS GEN UNMNZD AND WGLY MTC.

BOREHOLE 936200

DEPTH	DIFF	SAMP #	CU	NI	TPH	ROCK	DESCRIPTION
****	****	*****	**	**	***	****	*****
250.0	12.4	MJ298096	0.08	0.06	0.000	EX	#RQ070 AN330 SUR.001 THIS UNIT CONSISTS OF MGR, FELDIC EXENITE WITH INCLS OF FOR AMPH (PERHAPS SOME TYPE OF VOLCANIC BX). TS AT 254.0 FT OF MGR MTX CONSISTS OF CSR SHREDDY AMPH WITH SOME FRESH, LG, TABULAR PLAG WITH LOCAL PATCHES OF FLOOD QTZ AND GRPR (TOTALING APPROX 3-4%) SHOT THROUGH WITH FN, DISS CP (=MINOR PO)-TOTAL APPROX 2%. THIS UNIT SEEMS TO REPRESENT A FW BX WHICH HAS BEEN PERMEATED WITH GRIC COMP FLUIDS AND CP (SORT OF AN IPFW). AT 258.8 TO 259.7 FT THERE IS A QTZ VN AT 50 DEG TO CAX WHICH IS MNZD WITH IREG BLEY (STRKS) PO+CP (SOME OF THE QTZ IS BLUE OPALE SCENT). FOM AT 250.0 FT. ACCT #19403-10124. ACCOUNT NUMBER 19403-10124

*****END OF BOREHOLE*****



PHONE 705-567-9311
FAX 705-567-3014

HEATH & SHERWOOD DRILLING (1986) INC.

FORAGE HEATH & SHERWOOD (1986) INC.

P.O. BOX 998
34 DUNCAN AVE. NORTH
KIRKLAND LAKE, ONTARIO, CANADA
P2N 3L3

INVOICE

Inco Exploration & Technical Services Inc.
Engineering Building
Highway 17 West
Copper Cliff, Ontario
POM 1N0

Invoice No.: 4776
Date : December 15/94
D. O. No. : 1296

Attention: Mr. Wayne Garland

Terms: Net 30 Days or as per Contract

December 1 - 15, 1994

Gertrude And Whistle Property Shallow Drilling West Of The Creighton Mine

Drilling

# 93625	210			
# 93622	180			
# 93623	260			
# 93626	300			
# 93613	150			
# 93610	107			
# 67180	227			
# 67181	200			
# 67182	140			
# 67183	140			
# 67184	100			
# 67185	<u>100</u>	2 114 Ft.	13.70	\$ 28 961.80

Acid Tests

# 93625	@ 5, 100, 200			
# 93622	@ 14, 100, 168			
# 93623	@ 12, 130, 245			
# 93626	@ 11, 100, 200, 285			
# 93613	@ 11, 100			
# 93610	@ 6, 107	= 17 Tests	55.00	935.00

Area Moves

Gertrude to Whistle Property:

Approximately 800 Ft. to Loading Point			2 000.00	
Load and Unload			450.00	
Additional 800 Ft. to Drill Site			230.00	
Highway Trucking	= 223 Miles	2.00	<u>446.00</u>	3 126.00

Special Operations

December 12 Co. request to move drill	3 Rig Hours	33.00	99.00	
	6 Man Hours	21.50	129.00	
December 13 Ream Casing	1 Rig Hour	33.00	33.00	
	2 Man Hours	21.50	<u>43.00</u>	304.00

SUBTOTAL

\$ 33 326.80

NUMBER MINE NAME CODE LEVEL DEPTH AZ DIP SYS LAT DEP ELV DATE

 962260 GERTRUDE 509 0 300 15000 -7300 1 394056 357817 995 1294
 1. -- M.G. NAPOLI DRILL BQ BY HIS BBS-1 RIG ON 10W SECT @ 295 S. CASING
 2. -- PULLED. DRILL TO CONFIRM SULPHIDE & PREPARE A MILL TEST SAMPLE.
 3. -- DRILL BQ BY HEATH & SHERWOOD. STARTED 12/05/94 & COMPLETED 12/07/94.
 4. -- ALL CORE SAMPLED FOR CU/NI/TPM ASSAY. SPECIMENS @ 10 FOOT INTERVALS
 5. -- COLLECTED & STORED AT INCO'S LITTLE STORIE CORE FARM. DRILLED ON
 6. -- INCO PATENTED MINING LANDS, SOUTH HALF LOT 3, CONC.1, CREIGHTON TWP.

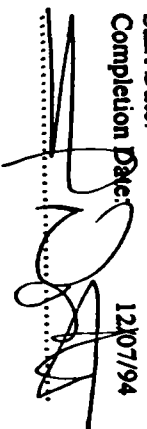
***** TESTS ***** *** WEIGES ***

10 -7300
 100 -7610
 200 -7530
 285 -7515

*** LOG ENTRIES ***

DEPTH	DIFF	SAMP #	CU	NI	TPM	ROCK	DESCRIPTION
*****	****	*****	**	**	***	****	*****
0.0							COLLAR
11.5	11.5					OB	OVERBURDEN
31.0	19.5	MJ296159	0.02	0.02	0.000	QGNR #R0D085	ANG30 SUL MASS, CGR, BIOTIC QGNR CNTNS APPROX 12% BLUE FLOOD QTZ AND <1% TO TR AMOUNTS OF DISS PO AS INSU. LOCY THIS CORE IS CUT BY NUM CHLC (+OR- CTE) FRACS AT 30 DEG TO CAX.
51.0	20.0	MJ296160	0.02	0.02	0.000	QGNR #R0D080	ANG25 SUL AS ABV
71.0	20.0	MJ296161	0.02	0.02	0.000	QGNR #R0D035	ANG30 SUL AS ABV BUT THIS INTERVAL OF CORE IS MORE BRKN UP BY MANY CHLC SLPS WHICH ARE ORIENTED AT 5 TO 40 DEG TO CAX.
91.0	20.0	MJ296162	0.02	0.02	0.000	QGNR #R0D055	ANG40 SUL AS ABV WITH SECT FROM 71.0 TO 82.0 FT WHICH IS QUITE BADLY BRKN. LOCY THE QGNR CNTNS PK PATCHES (LOOKS LIKE FELD ARE STAINED BY HFEM?). MNZD WITH TR BLBY PO+CP.
111.0	20.0	MJ296163	0.02	0.02	0.000	QGNR #R0D090	ANG45 SUL AS ABV TO 31.0 FT. GEN THIS INTERVAL IS UNBRKN.
121.3	10.3	MJ296164	0.02	0.02	0.000	QGNR #R0D099	ANG50 SUL AS ABV BUT THERE ARE SECTS WITHIN THIS INTERVAL WHICH ARE COARSER GRAINED (TXTR SIMILAR TO LEUCO NR VNS).
140.8	19.5	MJ296165	0.04	0.04	0.000	QGNR #R0D098	ANG25 SUL AS ABV BUT CNTNS SOME PATCHES OF FGR-MGR MASS SLNR. MNZD W TR-1% MGR BLBY PO+MINOR CP AS DISS INSU.

LOGGED BY:
 MAURIZIO NAPOLI
 Start Date: 12/05/94
 Completion Date: 12/07/94



BOREHOLE 934260

DEPTH	DIFF	SAMP #	CU	NI	TPM	ROCK	DESCRIPTION
*****	****	*****	**	**	***	****	*****
145.0	5.2	MJ296166	0.18	0.40	0.000	SLNR	#R00095 ANG55 SUL004 CONSISTS OF ALTERNATING SECTS OF CGR. MASS CGR. AS ABV AND MGR INCL SLR. HOWEVER THIS SLR LOOKS DIFF WITH PALE GRN ALTD FELD IN FGR BROWN GRN MASS. (TS #094-1848 AT 145.2 FT OF MASS MGR QTZ POOR SLNR CONSIST MAINLY BIMODAL PLAG, OPX (COM PLETELY ALTD TO SHREDDY ANTHO PHYLLITE) AND FLOOD. FGR GRPR THIS SLR CNTNS APPROX 5% WELL RND INCLS OF AMPHITE AND FGR GYGB (SEE TS). MNZD WITH 3-4% BLBY DISS PO+TR CP.
164.2	18.2	MJ296167	0.66	0.52	0.000	SLNR	#R00096 ANG50 SUL009 AS ABV. STILL CNTNS SOME MGR PATCHES OF CGR QBNR WITH BLUE FLOOD QTZ. MOSTLY SLNR PACKED WITH INCLS OF FGR GYGB AND PALE GRN AMPHITE. MNZD WITH 8% PO+1% CP AS RGD1 SULP BLOBS W HIGH OFTEN ENCLOSE VRY WELL RND INCLS OF MTGB, GYGB & AMPHITE. PLS SIT.
171.2	7.0	MJ296168	0.40	1.42	0.000	SLNR	#R00100 ANG60 SUL017 AS ABV BUT SOMEWHAT MORE MNZ AND LESS CP (16%PO+TR-(1%CP).
182.8	11.6	MJ296169	0.06	0.18	0.000	SLNR	#R00100 ANG50 SUL003 SIMILAR TO ABV BUT DOES NOT CNTN ANY CGR QBNR; CPD OF MGR , BIOTIC SLNR MTX HOSTING INCLS OF PALE GRN FELDIC AMPH. FGR GYGB AND GRN MTGB. MNZD W ITH 2-3% PO+ TR CP CONCENTRATE D IN PATCHES OF RGD1 MNZ AND AS DISS, RGD INSU.
195.5	12.7	MJ296170	0.16	0.12	0.000	SLNR	#R00093 ANG45 SUL AS ABV.
204.9	9.4	MJ296171	0.28	0.20	0.000	SLNR	#R00095 ANG40 SUL002 AS ABV BUT MANY OF THE INCLS ARE HOSTED IN A SLR? MTX WHICH IS PALE GRN COLORED (HIGH AMPH CONTENT) AND MNZD WITH FN-MGR DISS CP (SEE TS BELOW)
211.3	6.4	MJ296172	0.16	0.16	0.000	MTGB	#R00099 ANG55 SUL001 GREYISH COLORED FOR MASS FOR MTGB IS CUT BY SOME SLR? VNS MNZD WITH CP (AS ABV).
217.8	6.5	MJ296173	0.10	0.04	0.000	MTGB	#R00100 ANG SUL MIXTURE OF GREYISH GR (AS ABV) FELDIC AMPHITE AND MGR. IGNEOUS MTX (MNZD WITH DISS CP AS ABV) AS TREG VNS (SEE TS #)

BOREHOLE 935260

DEPTH	DIFF	SAMP #	CU	NI	TPM	ROCK	DESCRIPTION
232.7	14.9	MU296174	0.10	0.04	0.000	MTGB	*RQD093 AN#25 SUL MIXTURE OF FG (GREY-GRN MTGB (SIMILAR TO ABV), AMPC MTGB (GRN WITH FN WH SPOKLS-ALTD FPS) AND PRPC META VOLC (GRN WITH LG WH BLRS; FELSIC CLOTS LOOK SORT OF LIKE AN ELLIPSOIDAL METAGREYWACKE), STILL CUT BY RARE IREG VNS MNZD WITH DISS CP AS ABV.
245.0	12.3	MU296175	0.12	0.06	0.000	AMPH	*RQD025 AN#10 SUL MIXTURE OF FGR AMPC MTGB AS ABV + METACRYSTIC FELDIC AMPHITE WITH LG IREG CLOTS OF AN#4?CHLR? THE CORE IN THIS UNIT IS BADLY BRKN DUE TO A NETWORK OF SPIDERY CHLC SLPS AT 0-15 DEG TO CAX. STILL CUT BY RARE MTGB? VNS MNZD W FN DISS CP.
259.8	14.8	MU296176			0.000	GR	*RQD097 AN#25 SUL MASS PK MGR GR WITH SHRP UPPER (ORIENTED 20 DEG TO CAX) AND LOWER (ORIENTED 45 DEG) CTS WITH MTGB-AMPHITE FW.
279.0	19.2	MU296177	0.02	0.02	0.000	MTGB	*RQD080 AN#40 SUL MIXTURE OF MOSTLY FGR GREYISH GRN MTGB WITH INCL OF PK, PGTC GR. IMMEDIATELY ADJACENT TO THE GR UPHOLE THERE IS A UNIT OF BIOTIC MTGB PARTIAL MELT? (SEE TS AT 260.1 FT.....)
300.0	21.0	MU296178	0.12	0.04	0.001	MTGB	*RQD070 AN#25 SUL AS ABV TO 211.3 FT. THIS FGR MTGB IS CUT BY NUM IREG VNS OF GB PK? AS ABV WHICH ARE MNZD W DISS CP UP TO .2" SIZE. THIS INTERVAL OF CORE IS SOMEWHAT BRKN UP DUE TO NUM FN CHLR+CT E SLPS ORIENTED AT 15-30 DEG TO CAX. FCM AT 300 FEET. ACCOUNT NUMBER 19403-10124

*****END OF BOREHOLE*****



HEATH & SHERWOOD DRILLING (1986) INC.

FORAGE HEATH & SHERWOOD (1986) INC.

P.O. BOX 998
34 DUNCAN AVE. NORTH
KIRKLAND LAKE, ONTARIO, CANADA
P2N 3L3

INVOICE

Inco Exploration & Technical Services Inc.
Engineering Building
Highway 17 West
Copper Cliff, Ontario
P0M 1N0

Invoice No.: 4807
Date : Jan. 31/95
D. O. No. : 1296

Attention: Mr. Wayne Garland

Terms: Net 30 Days or as per Contract

January 16 - 31, 1995

Gertrude And Whistle Property Shallow Drilling West Of The Creighton Mine # A-10246

Drilling

# 93607	63	147	84			
# 93606	0	99	99			
# 93630	0	500	500			
# 93630	500	530	30			
# 93629	0	410	410			
# 93631	0	430	430			
# 93632	0	500	500			
# 93633	0	500	500	2 553 Ft.	13.95	\$ 35 614.35

Acid Tests

# 93606	@ 9, 99					
# 93630	@ 8, 100, 200, 300, 400, 500					
# 93629	@ 9, 100, 200, 300, 410					
# 93631	@ 3, 100, 200, 300, 430					
# 93632	@ 5, 100, 200, 300, 400, 500					
# 93633	@ 5, 100, 200, 300, 400, 500, = 30 Tests			55.00		1 650.00

Special Operations

January 23	Orientation	8 Man Hours		22.00		176.00
------------	-------------	-------------	--	-------	--	--------

Consumables

6 Only	BW choes # 2P5592D, 2R1635, 36, 37, 38, 41D	132.00			792.00	
5 Only	BW 2 Ft. casing	35.00	175.00			
3 Only	BW 5 Ft. casing	54.00	162.00			
2 Only	BW 10 Ft. casing	89.00	178.00		515.00	
					1 307.00	
	Plus 10%				130.70	1 437.70

SUBTOTAL

\$ 38 878.05

NUMBER MINE NAME CODE LEVEL DEPTH AZ DIP SYS LAT DEP ELEV DATE

 934300 GERTRUDE 509 0 530 0 -9000 1 384413 357920 999 0195

1. -- BRIAN JOHNSTON, DRLD BO WITH M&S BGS-1 ON 11W SECTION @ 70 N TO
2. -- OUTLINE SULPHIDE. CASING LEFT IN FOR POSSIBLE RIM TESTS.
3. -- DRLD BO BY HEATH & SHERWOOD. STARTED 01/19/95 & COMPLETED 01/23/95.
4. -- ALL CORE SAMPLED FOR CU/NI/TPM ASSAY. SPECIMENS @ 10 FOOT INTERVALS
5. -- COLLECTED & STORED AT INCO'S LITTLE STOBIE CORE FARM. DRILLED ON
6. -- INCO PATENTED MINING LANDS, SOUTH HALF LOT 3, CONC.1, CREEFTON TWP.

***** TESTS ***** *** WEDGES ***

15	-9000
100	-8845
200	-8845
300	-8915
400	-8845
500	-8845

*** LOG ENTRIES ***

DEPTH	DIFF	SAMP #	CU	NI	TPM	ROCK	DESCRIPTION
*****	****	*****	**	**	***	****	*****
0.0							COLLAR.
10.0	10.0					OB	OVERBURDEN, GROUND UP 2 FT.
20.0	10.0	MJ296398	0.05	0.05	0.000	GRNR #R00095 ANG SUL	FG-MG, DK GRN. CG BIOTS AND ABRL BLUE QTZ COMMON. LATHY PLAG ALSO. <1% SPKS TO RGD POPN. 7 FT IS BN CSNG CORE. JT AT 5 TCA. SAMPLE LOST. IF CHEMEX DID NOT RECEIVE IT. ARBITRY VALUES. KAR
40.0	20.0	MJ296399	0.02	0.02	0.000	GRNR #R00095 ANG SUL	AS ABOVE WITH 1% POPN AND <.5 % CP. JTG AT 50-60 TCA AND SUB PLL.
60.0	20.0	MJ296400	0.02	0.02	0.000	GRNR #R00090 ANG SUL	AS ABOVE BUT MORE ALTD. <1% SPKS OF POPN. JTG AT 60-70 TCA
80.0	20.0	MJ299101			0.000	GRNR #R00095 ANG SUL	AS ABOVE WITH OCC ALTN ZONE WI PK PLAG. <1% SPKS OF POPN. MNOR CP. <1/4" CARB VN AT 15 TCA. JTG AT 50-60 TCA.
100.0	20.0	MJ299102			0.000	GRNR #R00097 ANG SUL	AS ABOVE WITH <1% SPKS OF POPN WELL JTD AT 25-60 TCA.
108.3	8.3	MJ299103			0.000	GRNR #R00095 ANG SUL	AS ABOVE WITH <1% SPKS OF POPN NO CP. JTG AT 15, 25, 60 TCA.
130.0	11.7	MJ299104			0.000	GRNR #R00090 ANG SUL	FG-MG, DK GY. NO BLUE QTZ AND DOES NOT APPEAR TO BE AS ALTD AS ABOVE. STILL CNTNS CG BIOTS AND <1% SPKS OF POPN. WELL JTD AT 25, 40, 65, 70 TCA.
140.0	20.0	MJ299105			0.000	GRNR #R00097 ANG SUL	AS ABOVE. M.V.W WI RARE SPKS PO PN. JTG AT 45-50 TCA.

LOGGED BY:
 BRIAN JOHNSTON
 Start Date: 01/19/95
 Completion Date: 01/23/95

Brian Johnston
 R. D. Marshdale - Manager Sudbury
 Basin Exploration, for Brian Johnston

		BOREHOLE 936300					
DEPTH	DIFF	SAMP #	CU	NI	TPH	ROCK	DESCRIPTION
*****	****	*****	**	**	***	****	*****
150.0	10.0	MJ299106			0.000	GNR #R00100	ANG SUL AS ABOVE. MVM WITH SPKS OF PD PK. OCC ZONS WITH OPALESCENT BLUE QTZ. JTG AT 55 TCA.
165.0	12.0	MJ299107		0.02	0.000	GNR #R00095	ANG SUL AS ABOVE BUT WITH NO BLUE QTZ OR SULP. JTG AT 20,55,60 TCA.
173.0	5.0	MJ299108	0.04	0.04	0.000	GNR #R00100	ANG SUL AS ABOVE WITH 2% R001 POPN ANG <1% SPKS OF CP. JTG AT 55 TCA.
193.0	20.0	MJ299109			0.000	GNR #R00095	ANG SUL AS ABOVE WITH NO SULP. ALTN ZONES SIMILAR TO 80FT. OCC ZONES WITH BLUE QTZ. JTG AT 20 40,55,70 TCA.
213.0	20.0	MJ299110			0.000	GNR #R00080	ANG SUL SIMILAR TO 20FT. WITH A 3FT ALTN ZONE. THERE ARE QTZ-FDPC VNS UP 1 1/2 IN AT 15,30 TCA. PLAG IS PK IN PLACES. OCC CARB VNS AT 15,35 TCA. WELL JTD AT 15-65 TCA.
230.4	17.4	MJ299111			0.000	GNR #R00095	ANG SUL AS ABOVE. MVM WITH RARE SPKS OF POPN. QTZ-CARB VN AT 10 TCA WELL JTD AT 40-60 TCA.
250.0	19.6	MJ299112			0.000	GNR #R00095	ANG SUL AS ABOVE BUT NO BLUE QTZ. OCC ALTN ENDS UP TO 2" WHERE PLAG IS WHITE TO PK AT 50 TCA. WELL JTD AT 50-60 TCA.
270.0	20.0	MJ299113			0.000	GNR #R00090	ANG SUL AS TO 230.4'. MVM WITH <1% R001 POPN AND MNOR CP. OCC DK GY. FG MFC INCLS UP 2". JTG AT 45-70 TCA.
290.0	20.0	MJ299114			0.000	GNR #R00095	ANG SUL AS ABOVE. JTG AT 20,60 TCA.
302.6	12.6	MJ299115	0.04	0.04	0.000	GNR #R00097	ANG SUL AS ABOVE. MORE ALTD. WITH MG. GRN HRFL/AMPC INCLS UP TO 2". 1% R001 POPN AND <1% SPKS OF CP. JTG AT 50,15 TCA.
315.0	12.4	MJ299116	0.06	0.06	0.000	GNR #R00090	ANG SUL AS ABOVE. WITH FEW FG. DK GY INCLS. 1% R001 POPN. <1% SPKS OF CP. JTG AT 60-70 TCA.
324.5	9.5	MJ299117	0.02	0.04	0.000	GNR #R00090	ANG SUL AS ABOVE. ALTD. 2% BLEY POPN WITH VISIBLE FN LAMELLAE. <1% SPKS OF CP. JTG 20,55 TCA.
325.3	10.8	MJ299118	0.02	0.02	0.000	GNR #R00097	ANG SUL AS ABOVE. <1% R001 POPN AND MNOR CP. QTZ-CARB VN AT 15 TCA JTG AT 60,40 TCA.

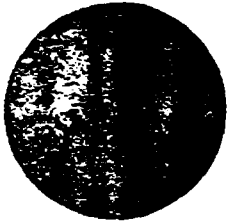
ROSEHOLE 936300

DEPTH	DIFF	SAMP #	CS	NI	TPM	ROCK	DESCRIPTION
*****	****	*****	**	**	***	****	*****
345.9	10.6	MJ299119	0.09	0.14	0.000	SLNR #R00090 ANG SUL	FG GRN NR MTX WITH 20% AMPC INCLS. QTZ-CAPS NR AT 55 TCA. 3% R001 TO BLBY POPN WITH VISIBLE PN AND <1% R001 CP. JTG AT 45, 10 TCA.
355.2	9.3	MJ299120	0.10	0.12	0.000	SLNR #R00090 ANG SUL	AS ABOVE WITH PATCHES OF MG LEUCO-00. 3% R001 TO BLBY POPN AND 1% R001 STRS OF CP AT IRFG ANGLES. AT 353' IS A 2" QTZ VN (65 TCA) WITH 1/4" VMS OF POPN AND CP AT BOTH CTS. JTG AT 30- 60 TCA. 358'-PY RICH CARB VN.
371.4	16.2	MJ299121	0.04	0.02	0.000	GRNR #R00095 ANG SUL	FG-MG GRN WITH BLUF QTZ. NO INCLS AND VERY LITTLE SULP - OCC SPKS OF POPN, MHR CP. JTG AT 30-60 TCA.
383.5	12.1	MJ299122	0.14	0.24	0.000	SLNR #R00090 ANG SUL	FG-MG NR MTX WITH 10% AMPC INCLS. 1% R001-BLBY POPN AND <1% CP. JTG AT 15, 50-60 TCA.
392.9	9.4	MJ299123	0.40	0.70	0.000	SLNR #R00098 ANG SUL	AS ABOVE. 4% POPN, WITH PN VISIBLE. 1% R001 CP. JTG AT 50 TO 60 TCA.
409.3	16.4	MJ299124	0.14	0.68	0.000	SLNR #R00100 ANG SUL	AS ABOVE. 4% BLBY POPN WITH <1 % BLBY CP. VERY LITTLE NR MTX JTG AT 70-75 TCA.
421.8	12.5	MJ299125	0.22	0.82	0.000	SLNR #R00100 ANG SUL	AS ABOVE BUT ALMOST INMS IN PLACES. 10% BLBY-PASS POPN WI VISIBLE PN AND 1% R001 CP.
441.0	19.2	MJ299126	0.06	0.08	0.000	MTGB #R00100 ANG SUL	FG, GY-GRN. RIBBING IS COMMON AT LOW ANGLES TCA. <1% SPKS PO PN AND CP. JTG AT 55-60 TCA.
455.6	14.6	MJ299127	0.04	0.02	0.000	MTGB #R00095 ANG SUL	AS ABOVE. FEWER RIBS. JTG AT 35, 15, 65. (SUBURITE?)
475.0	19.4	MJ299128	0.06	0.02	0.000	BSLT #R00090 ANG SUL	FG-MG, BK WITH STRETCHED OUT QTZO-FIDPC AMYG AT HIGH ANGLES TCA. CARB VN SUB-PLL TCA. JTG AT 50, 40, 30 TCA.
489.0	14.0	MJ299129	0.08	0.02	0.000	BSLT #R00095 ANG SUL	AS ABOVE BUT MG AND AM30 SEEM ASSIMILATED. 1% SPKS OF POPN AND CP. AT 484.5' IS A 1MM VN CP AT 60 TCA. JTG AT 30-50, 80 TCA.
509.0	20.0	MJ299130	0.04	0.02	0.000	MTGB #R00100 ANG SUL	FG, GY WITH CG BIOTS. 1% SPKS OF CP. VERY HNGS. JTG AT 60 TCA.

BOREHOLE 936300

DEPTH	DIFF	SAMP #	CU	NI	TPH	ROCK	DESCRIPTION
*****	****	*****	**	**	***	****	*****
502.8	13.8	KJ255131	0.02	0.02	0.000	MTGB	*R00100 ANG S.L. AS ABOVE WITH RARE SPKS OF PD PN AND OP. JTG AT 20.55-60 TCA
500.0	7.2	KJ255132	0.06	0.02	0.000	MTGB	*R00100 ANG S.L. AS ABOVE BUT DM QV, NO CS BIOT AND <1% POPN ANCP. JTG AT 40- 50 TCA. TS CYS-0111. FOR ACCOUNT NUMBER 19403-10124

*****END OF BOREHOLE*****



HEATH & SHERWOOD DRILLING (1986) INC.

FORAGE HEATH & SHERWOOD (1986) INC.

P.O. BOX 998
34 DUNCAN AVE. NORTH
KIRKLAND LAKE, ONTARIO, CANADA
P2N 3L3

INVOICE

Inco Exploration & Technical Services Inc.
Engineering Building
Highway 17 West
Copper Cliff, Ontario
P0M 1N0

Invoice No.: 4807
Date : Jan. 31/95
D. O. No. : 1296

Attention: Mr. Wayne Garland

Terms: Net 30 Days or as per Contract

January 16 - 31, 1995

Gertrude And Whistle Property Shallow Drilling West Of The Creighton Mine # A-10246

Drilling

# 93607	63	147	84		
# 93606	0	99	99		
# 93630	0	500	500		
# 93630	500	530	30		
# 93629	0	410	410		
# 93631	0	430	430		
# 93632	0	500	500		
# 93633	0	500	<u>500</u>	2 553 FL ✓	13.95
					\$ 35 614.35

Acid Tests

# 93606	@ 9, 99				
# 93630	@ 8, 100, 200, 300, 400, 500				
# 93629	@ 9, 100, 200, 300, 410				
# 93631	@ 3, 100, 200, 300, 430				
# 93632	@ 5, 100, 200, 300, 400, 500				
# 93633	@ 5, 100, 200, 300, 400, 500, = 30 Tests			55.00	1 650.00

Special Operations

January 23	Orientation	8 Man Hours		22.00	176.00
------------	-------------	-------------	--	-------	--------

Consumables

6 Only	BW choes # 2P5592D, 2R1635, 36, 37, 38, 41D	132.00		792.00	
5 Only	BW 2 Ft. casing	35.00	175.00		
3 Only	BW 5 Ft. casing	54.00	162.00		
2 Only	BW 10 Ft. casing	89.00	<u>178.00</u>		<u>515.00</u>
					1 307.00
	Plus 10%			<u>130.70</u>	1 437.70

SUBTOTAL

\$ 38 878.05

NUMBER NAME CODE LVL DEPTH AZ DIP SYS LAT DEP ELEV DATE

 92425 GERTRUDE 509 0 500 0 -9000 1 054304 057920 992 01/95

1. -- BRIAN JOHNSTON. DRILL BO WITH HQS BPS-1 ON 11 SECT 2 40S TO OUTLINE
2. -- SULPHIDE FOR POSS PIT. CASING LEFT IN FOR FUTURE RIM TESTING.
3. -- OUTLINE SULPHIDE. CASING LEFT IN FOR POSSIBLE RIM TESTS.
4. -- DR 2 BO BY LEATH & SHERWOOD. STARTED 01/30/95 & COMPLETED 01/31/95.
5. -- ALL CORE SAMPLED FOR QUANT/TPM ASSAY. SPECIMENS @ 10 FOOT INTERVALS
6. -- COLLECTED & STORED AT INCO'S LITTLE STORIE CORE FARM. DRILLED ON
7. -- INCO PATENTED MINING LANDS, SOUTH HALF LOT 3, CORP. 1, CRESTON TWP.

***** TESTS ***** *** WEIGHS ***

5	-9000
100	-9000
200	-8915
300	-8900
400	-8845
500	-8845

*** LOG ENTRIES ***

DEPTH	DIFF	SAMP #	CU	NI	TPM	ROCK	DESCRIPTION
*****	****	*****	**	**	***	****	*****
0.0							COLLAR.
5.7	5.7					OB	OVERBURDEN.
15.0	9.3	MJ299003			0.000	GRNR	#RQD095 ANG SUL 9.3' OF BM CSNG CORE. FG-MG, GY-BK, LONG LATHY FLAG, STUBBY PRXN MDY ALTD TO AMPH. BLUE OPALCFNT QTZ AND CS PIOT TRGT JTG AT 50-60 TCA.
34.9	19.9	MJ299004			0.000	GRNR	#RQD090 ANG SUL AS ABOVE. BITC IN PLACES. JTG AT 45-60 TCA.
53.0	18.1	MJ299005			0.000	GRNR	#RQD095 ANG SUL AS ABOVE. OOD CASP VN AT 25 TCA. JTG AT 20-55 TCA.
66.8	13.8	MJ299006			0.000	GRNR	#RQD100 ANG SUL AS ABOVE. JTG AT 50-70 TCA. VERY RARE FG, GY MTGB INCL.
86.2	19.4	MJ299007			0.000	GRNR	#RQD100 ANG SUL AS ABOVE. BUT NO BLUE QTZ AND LESS ALTD (MORE GY). RARE MTGB INCL UP TO 1 1/2". JTG AT 65 TCA
95.0	8.8	MJ299008			0.000	GRNR	#RQD097 ANG SUL AS ABOVE WITH BLUE QTZ. NO INCLS. JTG 20-30 TCA.
115.0	20.0	MJ299009			0.000	GRNR	#RQD095 ANG SUL AS ABOVE WITH BLUE QTZ AND NOT AS ALTD. OOD MTGB INCL UP TO 2". SVRL ALTN ENDS WITH WHITE FLAG AROUND HEALED FROTS. JTG AT 35,55,65 TCA.
135.0	20.0	MJ299010			0.000	GRNR	#RQD095 ANG SUL AS ABOVE. MAIN WITH RARE SPKS OF CP. SIMILAR ALTN ENDS AS PR AT HIGH ANG FS TCA. JTG AT 70,80 TCA.
155.0	20.0	MJ299011			0.000	GRNR	#RQD097 ANG SUL AS ABOVE. JTG AT 15,50 TCA.

R. D. Marindale - Manager Sudbury
 Basin Exploration, for Brian Johnston

LOGGED BY:
 BRIAN JOHNSTON
 Start Date: 01/30/95
 Completion Date: 01/31/95

			BOREHOLE 926030				DESCRIPTION
DEPTH	DIFF	SAMP #	CU	NJ	TRM	PCY	
*****	****	*****	**	**	***	****	*****
175.0	20.0	MJ299012			0.000	GENR	#R00095 ANG SUL AS ABOVE. MASS WITH RAPE SPKS OF POPN. OCC CARB LN AT 25 TCA AT 158' IS A 1" MTGB INCL. JTG AT SUB-PLL, 60-70 TCA.
194.4	19.4	MJ299013			0.000	GENR	#R00097 ANG SUL AS ABOVE. NO INCLS. JTG AT SUB PLL, 60-70 TCA.
210.5	14.1	MJ299014			0.000	GENR	#R00095 ANG SUL AS ABOVE. SIMILAR FRCTS AND ALTN AS TO 115'. JTG AT SUB- PLL, 50, 80 TCA.
230.0	19.5	MJ299015			0.000	GENR	#R00090 ANG SUL AS TO 95'. MASS WITH RAPE SPKS POP. WELL JTG AT 20-70 TCA.
250.0	20.0	MJ299016	0.02	0.000	0.000	GENR	#R00097 ANG SUL AS ABOVE WITH <1% SPKS OF POPN JTG AT 10, 45, 50 TCA.
256.5	6.5	MJ299017			0.000	GENR	#R00097 ANG SUL AS ABOVE. MNZD WITH <1% SPKS OF POPN WITH ALSO A FEW MTGB INCLS. JTG AT 35, 55, 60, 70 TCA.
272.7	16.2	MJ299018	0.02	0.04	0.000	GENR	#R00095 ANG SUL AS ABOVE WITH NO BLUE QTZ. MT- GB INCLS UP TO 1". 2% RGD1 TO BLBY POPN AND <1% SPKS OF CP. JTG AT 50-70 TCA.
287.3	14.6	MJ299019			0.000	GENR	#R00090 ANG SUL AS TO 256.5'. MNZD WITH 1% SPKS TO RGD1 POPN AND <1% SPKS CP. OCC CARB LN AT 15, 30 TCA. FRCTS AND ALTN AS TO 115'. JTG AT 40-70 TCA.
296.1	8.8	MJ299020	0.04	0.04	0.000	GENR	#R00065 ANG SUL AS ABOVE AND MNZD WITH 1% SPKS TO RGD1 POPN AND <1% SPKS OF CP. ROUND BROKEN DUE TO CARB RICH STRT ZONE. WK FOTN AT 45 TCA. CARB VNS AT 45 TCA AND WELL JTD AT 45 TCA.
312.7	16.6	MJ299021	0.02	0.04	0.000	GENR	#R00090 ANG SUL AS ABOVE. MNZD WITH 1% SPKS TO RGD1 POPN AND <1% SPKS CP. OCC MTGB INCLS AND FG NEAR END OF ENTRY. JTG AT 30-60 TCA.
318.6	5.9	MJ299022	0.06	0.10	0.000	GENR	#R00095 ANG SUL AS TO 272.7' FINER GRAINED. 1% RGD1 POPN AND <1% SPKS CP. FEW INCLS. JTG AT 40-50 TCA.
328.8	10.2	MJ299023	0.16	0.50	0.000	SLNR	#R00065 ANG SUL AS ABOVE BUT WITH MTGB, MFCC INCLS. IN PLACES IS INMS. 5% BLBY POPN AND VERY LITTLE CP. AT 324' IS A 2" FG NFO BIKE AT 40 TCA.

BOREHOLE 93-330

DEPTH	DIFF	SAMP #	CU	NI	TPM	ROCK	DESCRIPTION
****	****	*****	**	**	***	****	*****
335.0	6.2	MJ299024	0.62	2.14	0.000	SLNR #R02090 ANG SUL	AS ABOVE WITH 10% BLBY TO INPS PO WITH VISIBLE PN LAMLEEA AND 1% R001 TO BLBY OF. 40% MTGB-HRFO INCLS. JTG AT 30-40 TCA.
344.9	9.9	MJ299025	0.24	0.80	0.000	SLNR #R02090 ANG SUL	MTGB-HRFO INCLS WITH 10% POPN AND 1% CP. PN IS VISIBLE IN THE PO. JTG AT 60 TCA.
359.3	14.4	MJ299026	0.20	0.44	0.000	SLNR #R02090 ANG SUL	AS ABOVE WITH A LM INCL AT 348 FT. 5% POPN AND 1% CP. JTG AT 10-60 TCA. ORPTION A
369.3	10.0	MJ299027	1.06	0.66	0.000	SLNR #R02095 ANG SUL	AS ABOVE WITH 10% POPN AND 2% CP. CP APPEARS TO BE IN R001 BNTS. JTG AT SUB-FLL TO 30 TCA
378.2	8.9	MJ299028	0.04	0.06	0.000	MTBS #R02090 ANG SUL	FG, GN TO BK. ALT. 000 AMYG <1% SPKS TO R001 POPN AND CP. JTG SUB-FLL TO 30 TCA.
384.7	6.5	MJ299029	0.04	0.04	0.000	MTGB #R02095 ANG SUL	FG, GY, NFRS FINE QTZ-CARB VNS AT VARIOUS ANGLES. RARE DGR PERMEATIONS UP TO 1/4" WITH <1 % SPKS POPN AND CP. JTG AT 20- 50 TCA.
402.6	17.9	MJ299030	0.06	0.24	0.000	MTGB #R02075 ANG SUL	AS ABOVE WITH 1% R001 TO BLBY POPN AND <1% R001 CP. WELL JTG AT 20-60 TCA.
422.0	19.4	MJ299031	0.06	0.02	0.000	MTGB #R02097 ANG SUL	AS ABOVE BUT GY WITH CG BIOTS. MNM WITH <1% R001 CP WITH NO POP. JTG AT 60 TCA.
442.0	20.0	MJ299032	0.04	0.04	0.000	MTGB #R02095 ANG SUL	AS ABOVE WITH NO MNZN. SOME RIBBING PRESENT. JTG AT 30,60 TCA.
460.5	19.5	MJ299033	0.04	0.02	0.000	MTGB #R02097 ANG SUL	AS ABOVE WITH <1% SPKS OF CP. MNR POPN. JTG AT 15,60 TCA.
470.5	10.0	MJ299034	0.02	0.02	0.000	MTBS #R02097 ANG SUL	FG, BK GY TO BK WITH QTZ-FRFO AMYG UP TO 1/4". AT 464.3' IS A 1 1/2" QTZ VN AT 45 TCA. MNR CARB WITH IT ALSO. JTG AT 40-60 TCA.
483.9	13.4	MJ299035	0.04	0.02	0.000	MTBS #R02090 ANG SUL	AS ABOVE BUT AMYG MORE ASSIMIL ATED. MNM WITH <1% SPKS OF CP WELL JTG AT 30-60 TCA.

BOREHOLE 934300

DEPTH	DIFF	SAMP #	CU	NI	TPH	ROCK	DESCRIPTION
*****	****	*****	**	**	***	****	*****
500.0	16.1	B3299036	0.02	0.02	0.000	MTGB #R20095 ANG	SUL AS TO 422' WITH NYS FINE CARB ONS AT LOW ANGLES TOA, BOTTOM 2' OF ENTRY IS A STEELWREN INCL MANW WITH 61% GRA% OF POBN AND CP, JTG AT 60 TOA, FOM, ACCOUNT NUMBER 19403-10124

*****END OF BOREHOLE*****

ROCK NAME ABBREVIATIONS

Sudbury Igneous Complex

GRNR - Green Norite

QBNR - Quartzose Brown Norite

QGNR - Quartzose Green Norite

IBNR - Inclusion Basin Norite

SLNR - Sublayer Norite

MASU - Massive Sulphide

Footwall Breccia

MTBX - Metabreccia

Creighton Pluton

GR - Granite

GRGN - Granite, Gneissic Textured

GN - Granite and Amphibolite Gneissic Melange

Elsie Mountain Formation

AMPH - Amphibolite

BX - Volcanic Breccia

BSLT - Basalt

MTGB - Metagabbro

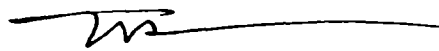
Miscellaneous

CSNG - Casing

CERTIFICATE OF QUALIFICATIONS

I, Everett F. Makela of 343 Maple Street, Lively, Ontario hereby certify that:

- 1. I am a 1986 graduate of Laurentian University at Sudbury, with an Honours Bachelor of Science Degree in Geology.**
- 2. I have practiced in my profession continuously since 1985.**
- 3. I am currently employed by Inco Exploration in Copper Cliff, Ontario.**



.....
Everett F. Makela
May 21, 1996






CREIGHTON

93630-0
93633-0
93632-0
93628-0
93618-0



GRAHAM

-  INCO PATENTED LAND
-  INCO LEASED LAND
-  INCO UNPATENTED CLAIMS

INCO
EXPLORATION

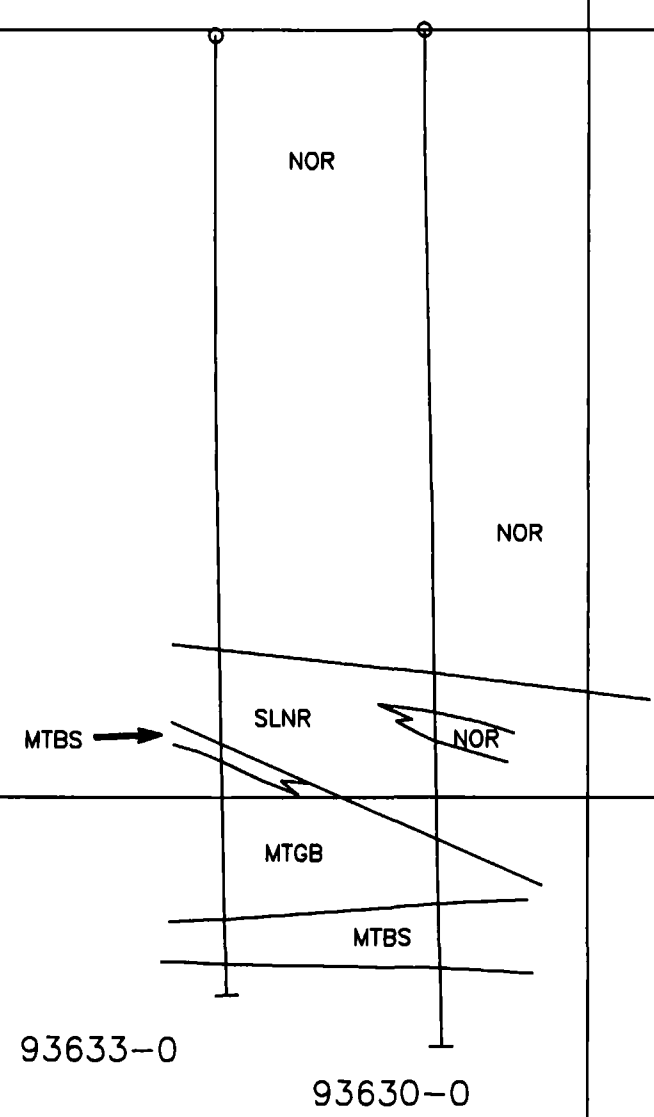
0 10,000
ft

1000 Elev

600 Elev

384100N

384500N

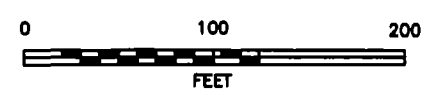


NOR	Norite
SLNR	Sublayer Norite
MTBX	Metabreccia
MTBS	Metabasalt
MTGB	Metagabbro
GR	Granite

ASSESSMENT INFORMATION

Borehole #	Azimuth	Angle	Total Length
93630-0		-90°	500'
93633-0		-90°	530'

NOTE: ALL BOREHOLES ON INCO PATENTED MINING CLAIM SOUTH HALF OF LOT 3, CONCESSION 1 IN CREIGHTON TOWNSHIP



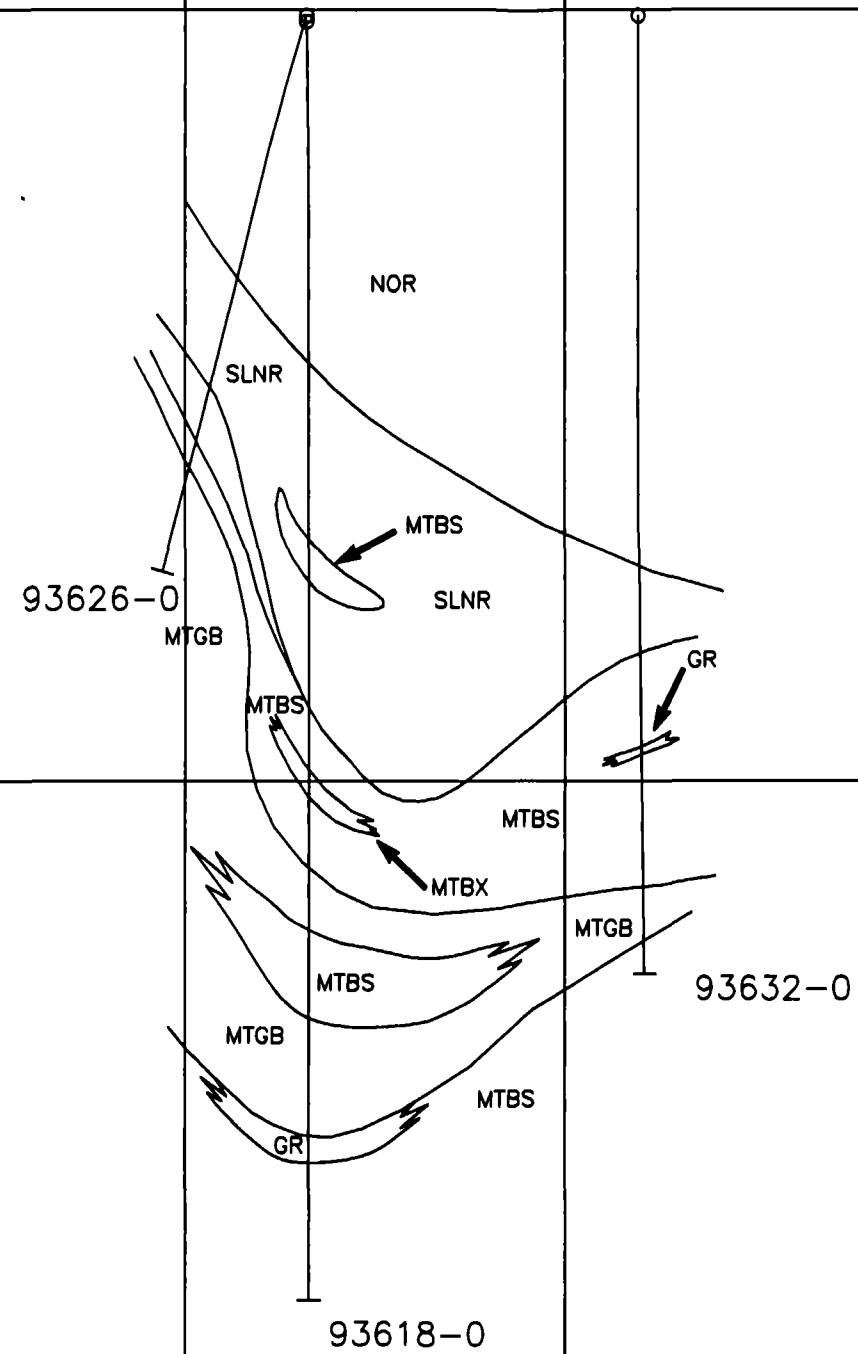
INCO
EXPLORATION

Copper Cliff, Ontario
POM 1NO

Project: GERTRUDE PROJECT		Area: Graham Township, Ontario	
SECTION 1100W LOOKING WEST			
Compiled by: E.Makela		Supervisor: R.D.Martindale	
Drawn by: B.Halbert		Revised by:	
Scale: 1=100		N.T.S. 41 I	
File: GRORSEC2.DWG			
		Date drawn: May 1, 1996	
		Revised:	

1000 Elev

600 Elev

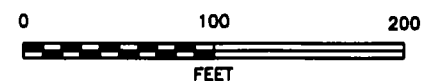


NOR	Norite
SLNR	Sublayer Norite
MTBX	Metabreccia
MTBS	Metabasalt
MTGB	Metagabbro
GR	Granite

ASSESSMENT INFORMATION

Borehole #	Azimuth	Angle	Total Length
93618-0		-90°	667'
93626-0	180	-73°	300'
93632-0		-90°	500'

NOTE: ALL BOREHOLES ON INCO PATENTED MINING CLAIM SOUTH HALF OF LOT 3, CONCESSION 1 IN CREIGHTON TOWNSHIP



INCO
EXPLORATION

Copper Cliff, Ontario
POM 1NO

Project: GERTRUDE PROJECT

Area: Graham Township, Ontario

SECTION 1200W
LOOKING WEST

Compiled by: E.Makela

Supervisor: R.D.Martindale

Date drawn:
May 1, 1996

Drawn by: B.Halbert

Revised by:

Revised:

Scale: 1=100

N.T.S. 41 1

File: GRDRSEC1.DWG



Report of Work Conducted After Recording Claim

Mining

Transaction Number
W9670.00105

Personal information collected on this form is obtained under the authority of the Access to Information Act. This collection should be directed to the Provincial Manager, Mining Law, Sudbury, Ontario, P3E 6A5, telephone (705) 670-7264.



41106NE0002 W9670-00105 CREIGHTON 900

- Instructions:**
- Please type or print and submit in duplicate.
 - Refer to the Mining Act and Regulations for requirements of mining assessment work.
 - A separate copy of this form must be completed for each Work Group.
 - Technical reports and maps must accompany this form in duplicate.
 - A sketch, showing the claims the work is assigned to, must accompany this form.

Recorded Holder(s) Inco Limited		Client No. 147534
Address c/o Field Exploration Office, Hwy 17 West, Copper Cliff, Ont. P0M 1N0		Telephone No. 705-682-8451
Mining Division Sudbury	Township/Area Graham Creighton	M or G Plan No.
Dates Work Performed From: November 23, 1994		To: January 31, 1995

Work Performed (Check One Work Group Only)

Work Group	Type
<input type="checkbox"/> Geotechnical Survey	
<input checked="" type="checkbox"/> Physical Work, including Drilling	Diamond Drilling
<input type="checkbox"/> Rehabilitation	
<input type="checkbox"/> Other Authorized Work	SECTION 18 ONLY
<input type="checkbox"/> Assays	
<input type="checkbox"/> Assignment from Reserve	

Total Assessment Work Claimed on the Attached Statement of Costs \$ 31,178.40

Note: The Minister may reject for assessment work credit all or part of the assessment work submitted if the recorded holder cannot verify expenditures claimed in the statement of costs within 30 days of a request for verification.

Persons and Survey Company Who Performed the Work (Give Name and Address of Author of Report)

Name	Address
Heath & Sherwood Drilling	PO Box 998, 34 Duncan Ave., Kirkland Lake, Ont. P2N 3L3
Everett F. Makela	343 Maple Street, Lively, Ontario

(attach a schedule if necessary)

Certification of Beneficial Interest * See Note No. 1 on reverse side

I certify that at the time the work was performed, the claims covered in this work report were recorded in the current holder's name or held under a beneficial interest by the current recorded holder.	Date May 23/96	Recorded Holder or Agent (Signature) <i>Brian Randa</i>
	Agent for Inco Limited	

Certification of Work Report

I certify that I have a personal knowledge of the facts set forth in this Work report, having performed the work or witnessed same during and/or after its completion and annexed report is true.		
Name and Address of Person Certifying Everett F. Makela, c/o Inco Limited Field Exploration Office, Hwy 17 West, Copper Cliff, Ontario P0M 1N0		
Telephone No. 705-682-8412	Date May 22, 1996	Certified By (Signature) <i>EM</i>

For Office Use Only

Total Value Cr. Recorded Applied \$14,400.00 Received \$16,778.00	Date Recorded May 23, 1996	Mining Recorder <i>[Signature]</i>	SUDBURY RECEIVED MAY 23 1996 A.M. P.M. 7, 8, 9, 10, 11, 12, 1, 2, 3, 4, 5, 6
	Deemed Approval Date August 21, 1996	Date Approved July 9, 1996	
	Date Notice for Amendments Sent		

Work Report Number for Applying Reserve	Claim Number (see Note 2)	Number of Claim Units
Parcel #1317	Creighton Twp. SW1/4 Lot 3 Con I	2
	S1197724	1
	S1197725	1
	S1197726	1
	S1197727	1
	S1197728	1
	S1197729	1
Total Number of Claims		7

Value of Assessment Work Done on this Claim	Value Applied to this Claim	
31,178	2,400	
	2,400	
	2,400	
	2,400	
	2,400	
	2,400	
	2,400	
Total Value Work Done		31,178
Total Value Work Applied		14,400

Value Assigned from this Claim	Reserve: Work to be Claimed at a Future Date	
14,400	16,778	
Total Assigned From		14,400
Total Reserve		16,778

Credits you are claiming in this report may be cut back. In order to minimize the adverse effects of such deletions, please indicate from which claims you wish to prioritize the deletion of credits. Please mark (✓) one of the following:

- Credits are to be cut back starting with the claim listed last, working backwards.
- Credits are to be cut back equally over all claims contained in this report of work.
- Credits are to be cut back as prioritized on the attached appendix.

In the event that you have not specified your choice of priority, option one will be implemented.

Note 1: Examples of beneficial interest are unrecorded transfers, option agreements, memorandum of agreements, etc., with respect to the mining claims.

Note 2: If work has been performed on patented or leased land, please complete the following:

I certify that the recorded holder had a beneficial interest in the patented or leased land at the time the work was performed.	Signature <i>Brian Randa</i>	Date May 22, 1996
	Brian Randa Agent for Inco Limited	



Ministry of
Northern Development
and Mines

Ministère du
Développement du Nord
et des mines

**Statement of Costs
for Assessment Credit**

**État des coûts aux fins
du crédit d'évaluation**

Transaction No./N° de transaction

W9670.00105

Mining Act/Loi sur les mines

Personal information collected on this form is obtained under the authority of the Mining Act. This information will be used to maintain a record and ongoing status of the mining claim(s). Questions about this collection should be directed to the Provincial Manager, Minings Lands, Ministry of Northern Development and Mines, 4th Floor, 159 Cedar Street, Sudbury, Ontario P3E 6A5, telephone (705) 670-7264.

Les renseignements personnels contenus dans la présente formule sont recueillis en vertu de la Loi sur les mines et serviront à tenir à jour un registre des concessions minières. Adresser toute question sur la collecte de ces renseignements au chef provincial des terrains miniers, ministère du Développement du Nord et des Mines, 159, rue Cedar, 4^e étage, Sudbury (Ontario) P3E 6A5, téléphone (705) 670-7264.

1. Direct Costs/Coûts directs

Type	Description	Amount Montant	Totals Total global
Wages Salaires	Labour Main-d'oeuvre		
	Field Supervision Supervision sur le terrain		
Contractor's and Consultant's Fees Droits de l'entrepreneur et de l'expert- conseil	Type		
	Diamond Drilling	31,178	
			31,178
Supplies Used Fournitures utilisées	Type		
Equipment Rental Location de matériel	Type		
Total Direct Costs Total des coûts directs			31,178

2. Indirect Costs/Coûts indirects

** Note: When claiming Rehabilitation work Indirect costs are not allowable as assessment work.
Pour le remboursement des travaux de réhabilitation, les coûts indirects ne sont pas admissibles en tant que travaux d'évaluation.

Type	Description	Amount Montant	Totals Total global
Transportation Transport	Type		
Food and Lodging Nourriture et hébergement			
Mobilization and Demobilization Mobilisation et démobilisation			
Sub Total of Indirect Costs Total partiel des coûts indirects			
Amount Allowable (not greater than 20% of Direct Costs) Montant admissible (n'excédant pas 20 % des coûts directs)			
Total Value of Assessment Credit (Total of Direct and Allowable indirect costs)		Valeur totale du crédit d'évaluation (Total des coûts directs et indirects admissibles)	31,178

Note: The recorded holder will be required to verify expenditures claimed in this statement of costs within 30 days of a request for verification. If verification is not made, the Minister may reject for assessment work all or part of the assessment work submitted.

Note : Le titulaire enregistré sera tenu de vérifier les dépenses demandées dans le présent état des coûts dans les 30 jours suivant une demande à cet effet. Si la vérification n'est pas effectuée, le ministre peut rejeter tout ou une partie des travaux d'évaluation présentés.

Filing Discounts

1. Work filed within two years of completion is claimed at 100% of the above Total Value of Assessment Credit.
2. Work filed three, four or five years after completion is claimed at 50% of the above Total Value of Assessment Credit. See calculations below:

Total Value of Assessment Credit	Total Assessment Claimed
	× 0.50 =

Remises pour dépôt

1. Les travaux déposés dans les deux ans suivant leur achèvement sont remboursés à 100 % de la valeur totale susmentionnée du crédit d'évaluation.
2. Les travaux déposés trois, quatre ou cinq ans après leur achèvement sont remboursés à 50 % de la valeur totale du crédit d'évaluation susmentionné. Voir les calculs ci-dessous.

Valeur totale du crédit d'évaluation	Evaluation totale demandée
	× 0,50 =

Certification Verifying Statement of Costs

I hereby certify:
that the amounts shown are as accurate as possible and these costs were incurred while conducting assessment work on the lands shown on the accompanying Report of Work form.

that as Landman I am authorized
(Recorded Holder, Agent, Position in Company)

to make this certification

Attestation de l'état des coûts

J'atteste par la présente :
que les montants indiqués sont le plus exact possible et que ces dépenses ont été engagées pour effectuer les travaux d'évaluation sur les terrains indiqués dans la formule de rapport de travail ci-joint.

Et qu'à titre de _____ je suis autorisé
(titulaire enregistré, représentant, poste occupé dans la compagnie)

à faire cette attestation.

Signature Brian Randa Date May 22, 1996
Agent for Inco Limited

W. 138

CREIGHTON TWP.

85 T.M

BALFOUR TWP.

THE TOWNSHIP OF
OF
CREIGHTON
DISTRICT of SUBURY
SUBURY MINING
DIVISION

SCALE: 1 INCH TO 40 CHAINS

LEGEND

- PATENTED LANDS (P)
- CROWN LAND SALES (C.S.)
- LICENSE OF OCCUPATION (L.O.)
- LOCATED LANDS (Loc.)
- IMPROVED ROADS (—)
- RAILWAYS (—+—+—)
- POWER TRANSMISSION LINE (—+—+—+—)

NOTES

AREA MARKED THUS
SUBJECT TO S. 91 OF THE ACT.

400' Surface Rights Reservation around
all Lakes and Rivers.

Areas withdrawn from staking under Section
43 of the Mining Act, R.S.O. 1970.

Order No.	File No.	Date	Disposition
0-3-40784	18850	3/16/76	—SRO—
W-36-726	188320	—	—SRO—

L.O. 9122 issued for flooding rights for
Stobie Dam (Lot 10 Con VII) and lands flooded
to contour elevation 81'

* JUNE 1, 1994 OPENINGS ONTARIO GAZETTE
VOL. 127-20 MAY 14, 1994 PAGE 1659

DATE OF ISSUE

JUL 09 1998
SUDBURY
MINING RECORDER'S OFFICE

THE INFORMATION THAT
APPEARS ON THIS MAP
HAS BEEN COMPILED
FROM VARIOUS SOURCES,
AND ACCURACY IS NOT
GUARANTEED. THOSE
WISHING TO STAKE MIN-
ING CLAIMS SHOULD CON-
SULT WITH THE MINING
RECORDER, MINISTRY OF
NORTHERN DEVELOP-
MENT AND MINES, FOR AD-
DITIONAL INFORMATION
ON THE STATUS OF THE
LANDS SHOWN HEREON.

M.738

ONTARIO
MINISTRY OF NATURAL RESOURCES
SURVEYS AND MAPPING BRANCH

W. 138

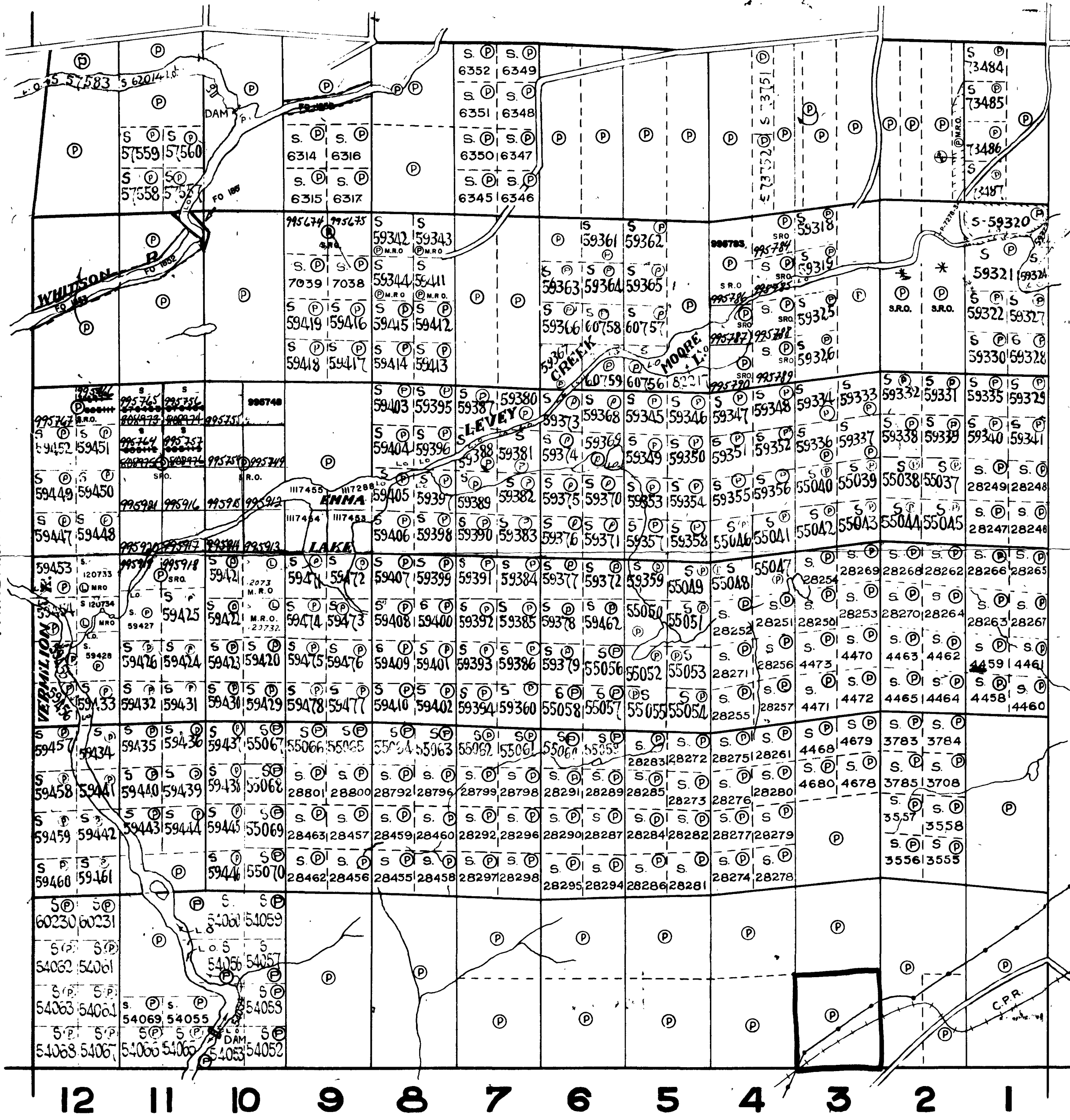
CREIGHTON TWP.

85 T.M

VI
V
IV
III
II
I

SNIDER TWP.

W 9670-00105
PDRILL



CREIGHTON TOWNSHIP

GRAHAM TOWNSHIP

LOT 6

LOT 5

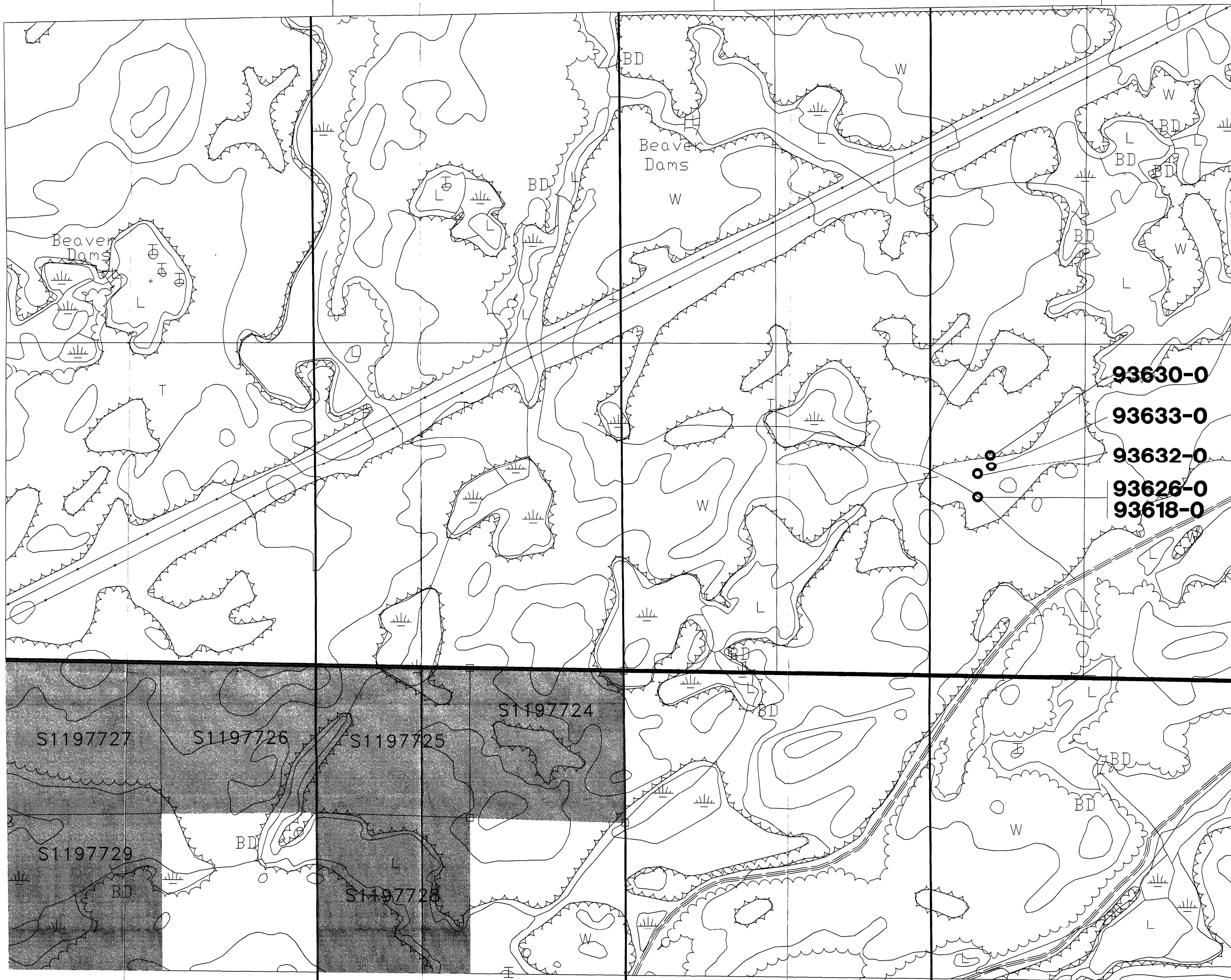
LOT 4

LOT 3

482000E

483000E

484000E

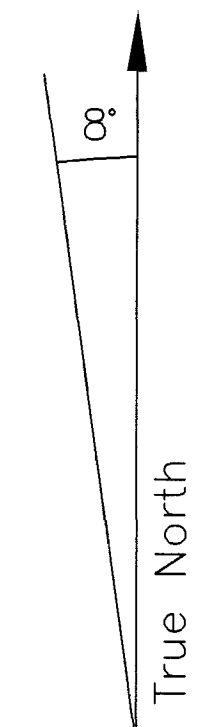


LOT 6

LOT 5

LOT 4

LOT 3



Magnetic Declination = 8°

CREIGHTON TOWNSHIP

- BH93618-0 123m W, 467m N OF SOUTH WEST CORNER OF LOT 3, CON. 1
- BH93626-0 123m W, 467m N OF SOUTH WEST CORNER OF LOT 3, CON. 1
- BH93630-0 155m W, 586m N OF SOUTH WEST CORNER OF LOT 3, CON. 1
- BH93632-0 123m W, 529m N OF SOUTH WEST CORNER OF LOT 3, CON. 1
- BH93633-0 153m W, 550m N OF SOUTH WEST CORNER OF LOT 3, CON. 1

CON I

CON VI

LEGEND

- BH COLLAR
- S1197727 INCO PATENTED CLAIMS / SURFACE AND MINING RIGHTS
- TRAIL
- ROAD
- EDGE OF FOREST COVER
- WATER OUTLINE
- POWER LINE
- CLAIM POST



Copper Cliff, Ontario
POM 110

Project: GERTRUDE PROJECT		Area: Graham Township, Ontario	
DRILLING PLAN			SHEET 1
Supervisor: R.Martindale	Instrument:	Survey date:	
Compiled by: E.Makela	Drawn by: B.Halbert	Date drawn: 05/01/98	Revised:
Scale: 1 = 5000	File: GRDRPLN.DWG	N.T.S. 4:1	

