

DEN-01

Consolidated Venturex Holdings

DIAMOND DRILL RECORD

Denison Property

HOLE NUMBER DEN-01

GRID LOCATION 10+07N / 13+00E
SURVEYED No
LENGTH 9.2m
GRID BEARING 380
AZIMUTH 380
INCLINATION -45
COLLAR ELEVATION 1000
UTM coordinates 5137029N
469539E

COMMENCED 3-Sep-02
COMPLETED 3-Sep-02
DRILLING CO. Agile Drilling
CORE SIZE BQ thinwall
CASING LEFT left
LOGGED BY Beilhartz *O. Beilhartz*
CORE LOCATION 999 Penage Lake road
CLAIM 1247346

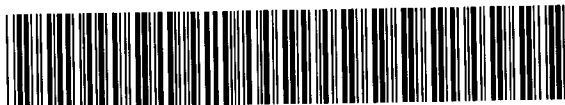
SURVEY INFORMATION

DEPTH
0

INCLINATION
-45

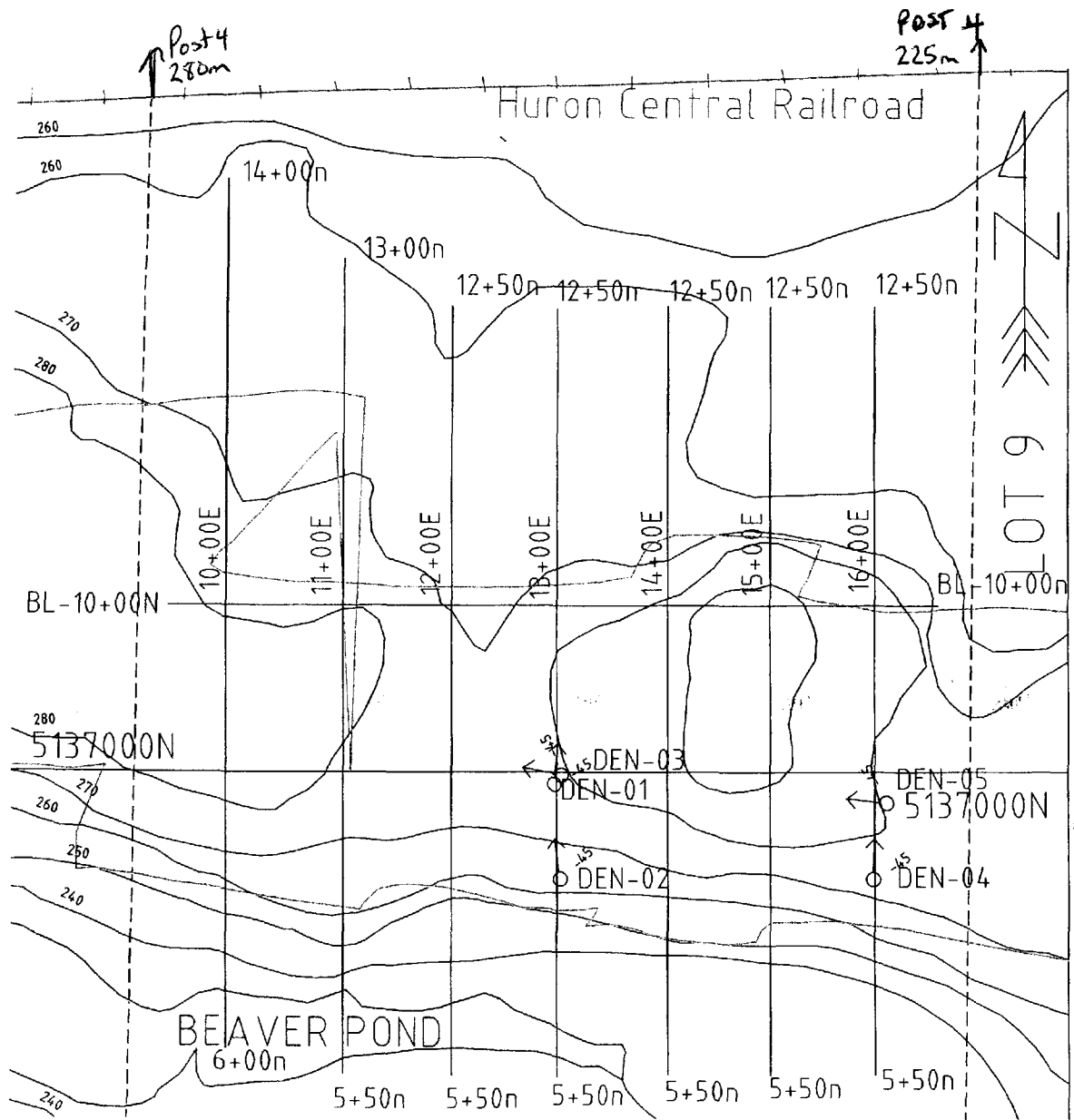
AZIMUTH
180

Sperry-Sun



DEN-01

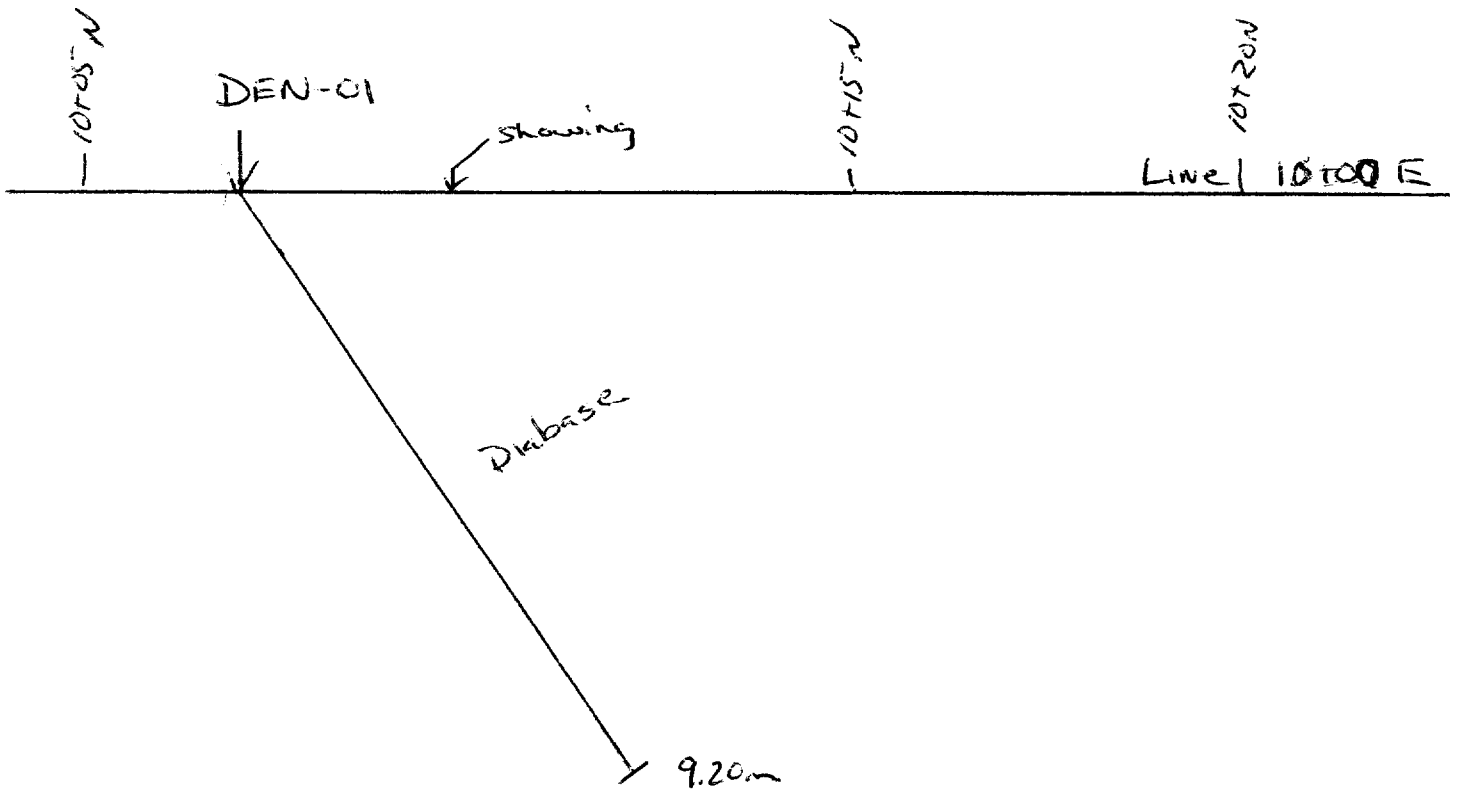
DRILL HOLE		DEN-01												
INTERVAL	LENGTH	LITHOLOGY	DESCRIPTION	SAMPLE	INTERVAL	LENGTH	Cu	Ni	Co	Pt	Pd	Au		
0.00	9.20	9.20	Diabase	Medium grained , light to medium green, mafic Intrusive. Nipissing Diabase. Comprised of mainly of amphibolitized pyroxenite. Masssive to weakly foliated. Occasional 1-5 mm quartz calcite veinlets. No sulfides observed.										
			7.0 to 7.3 meters, Weakly to mModeratly foliated at 45 degrees.											
	9.20	9.20	End Of Hole											



CONSOLIDATED
 VENTUREX
 HOLDINGS LTD
 Denison Property
 Claim 1247342
 Lot 9 Conc 2 Denison Township
 Prospecting and Geology
 Diabase Contacts
 Mapping By:
 Doug MacMillan
 Scale 0 50 100m Drawn By:
 David Beilhartz

O. Beilhartz
Drill Hole Layout

- DEN-01
- Diabase Contacts
- Contour Lines
Interval 10m
- Buildings



DEN-01

Azimuth 360°

DIP -45°

DENISON TWP

CLAIM 1247346

Scale.

0 1 2 3m

1:100

DEN-02

Consolidated Venturex Holdings

DIAMOND DRILL RECORD

Denison Property

HOLE NUMBER DEN-02

GRID LOCATION 13+00E / 8+70 N
SURVEYED No
LENGTH 76.2m
GRID BEARING 340
AZIMUTH 360
INCLINATION -45
COLLAR ELEVATION 1000
UTM Coordinates 5137029N
469533E

COMMENCED 4-Sep-02
COMPLETED 5-Sep-02
DRILLING CO. Agile Drilling
CORE SIZE BQ thinwall
CASING LEFT left
LOGGED BY Beilhartz *D. Beilhartz*
CORE LOCATION 999 Penage Lake road
CLAIM 1247346

SURVEY INFORMATION

DEPTH 0 INCLINATION -45 AZIMUTH 180

Sperry-Sun

Date Printed: 10-Nov-02

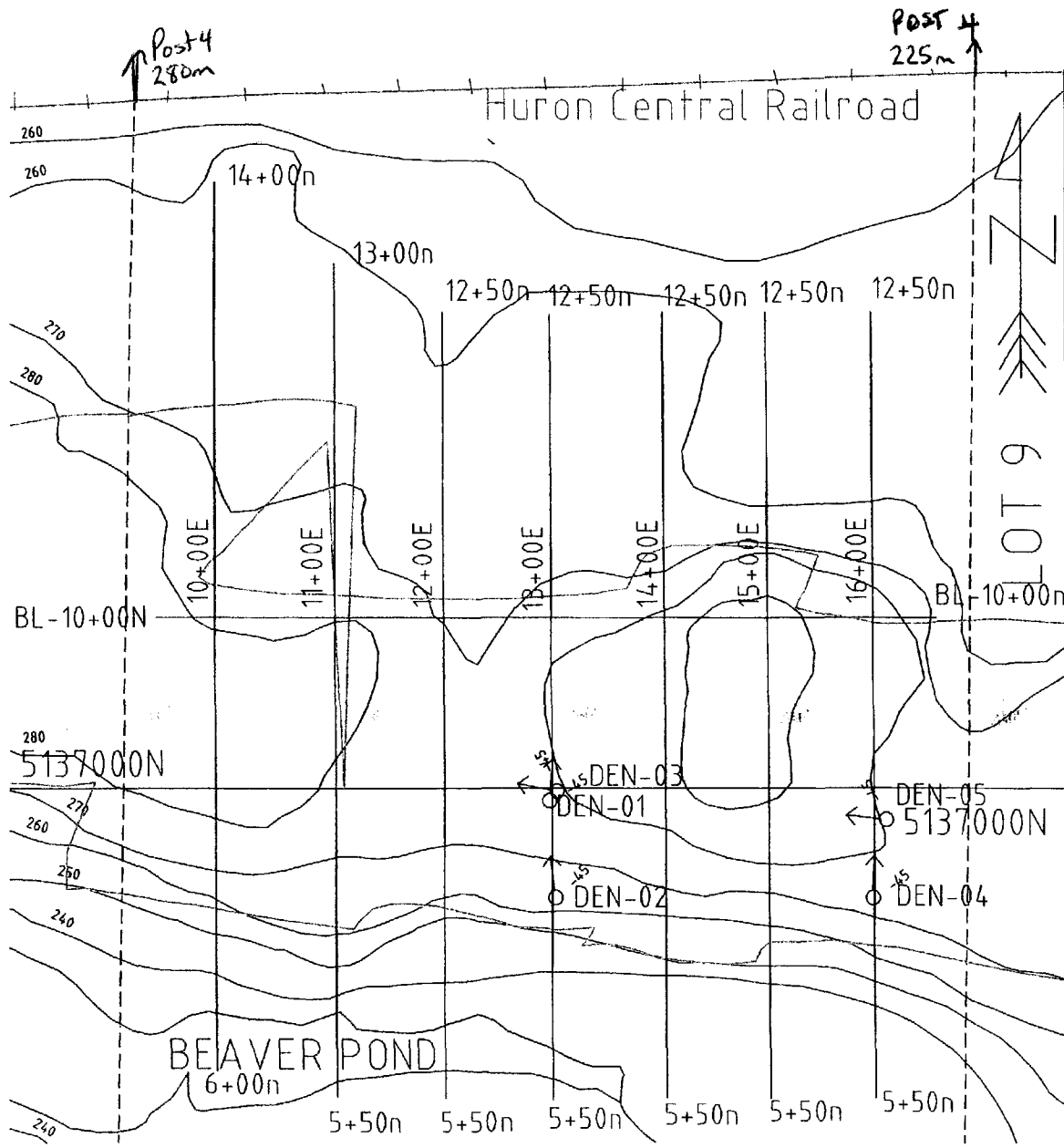


DEN-01

DRILL HOLE		DEN-02			SAMPLE	INTERVAL	LENGTH	Cu	Ni	Co	Pt	Pd	Au
INTERVAL	LENGTH	LITHOLOGY	DESCRIPTION										
0.00	12.80	12.80	Overburden	Casing, sand and gravel.									
12.80	33.50	20.70	Diabase	Medium grained, light to medium green, mafic Intrusive. Nipissing Diabase. Comprised of mainly of amphibolitized pyroxenite. Massive to weakly foliated. Several 1-2cm quartz calcite veinlets parallel to foliation. Random chloritic fracture from 1 to 5 mm. No sulfides observed.	No Samples								
33.50	48.75	15.25	Diabase	Medium grained, light to medium green, mafic Intrusive. As above. Nipissing Diabase. Comprised of mainly of amphibolitized pyroxenite. Massive to weakly foliated. Several 1-2cm quartz calcite veinlets parallel to foliation. The random chloritic fracture which range from 1 to 5 mm also contains minor graphite. No sulfides observed.									
48.75	56.50	7.75	Diabase	Medium grained, light to medium green, mafic Intrusive. As above. Nipissing Diabase. Comprised of mainly of amphibolitized pyroxenite. Massive to weakly foliated. Several 1-2cm quartz calcite veinlets parallel to foliation. 1-2% random fractures which range from 1 to 5 mm contain graphite. No sulfides observed. Possible IP conductor.									
				56.50m, 10cm weakly breccated fracture with 20% graphite matrix.									
				56.50m, 2cm weakly breccated fracture with 20% graphite matrix.									

DEN-01

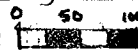
INTERVAL	LENGTH	LITHOLOGY	DESCRIPTION	SAMPLE	INTERVAL	LENGTH	Cu	Ni	Co	Pt	Pd	Au
56.50	67.06	10.56 Diabase	Medium grained , light to medium green, mafic Intrusive. As above. Nipissing Diabase. Comprised of mainly of amphibolitized pyroxenite. Masssive to weakly foliated. Several 1-2cm quartz calcite veinlets parallel to foliation. The random chloritic fracture which range from 1 to 5 mm also contains minor graphite. No sulfides observed.									
67.06	76.20	9.14 Diabase	Medium grained , light to medium green, mafic Intrusive. Nipissing Diabase. Comprised of mainly of amphibolitized pyroxenite. Masssive to weakly foliated. Random chloritic fracture from 1 to 5 mm. No sulfides observed.									
76.20		-76.20	End of Hole									



CONSOLIDATED
VENTUREX
HOLDINGS LTD

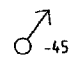



Denison Property
Claim 1247342
Lot 9 Conc 2 Denison Township

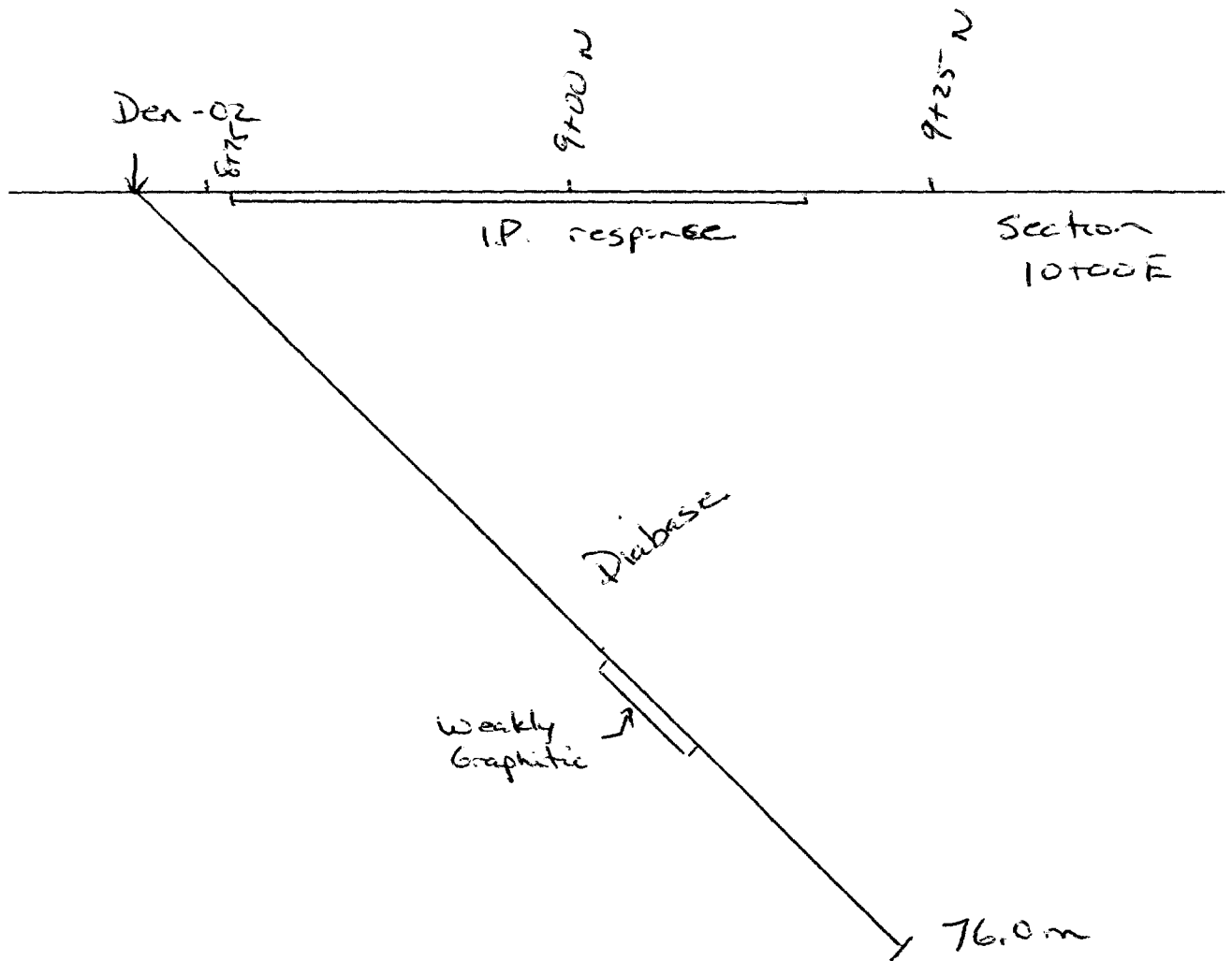
Prospecting and Geology
Diabase Contacts

Mapping By:
Doug MacMillan
Scale  Drawn By:
David Beilhartz

D. Beilhartz

Drill Hole Layout

-  DEN-01
-  Diabase Contacts
-  Contour Lines
Interval 10m
-  Buildings



DEN-02

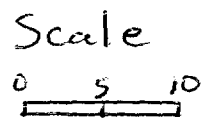
SECTION 10+00E

Azimuth 360°

Dip -45

DENSION TWP

CLAIM 1247346



1:500

DEN-03

Consolidated Venturix Holdings

DIAMOND DRILL RECORD

Denison Property

HOLE NUMBER DEN-03

LOCATION 13+06.5 / 10+09N
SURVEYED No
LENGTH 21.5
GRID BEARING 280
AZIMUTH 280
INCLINATION -45
COLLAR ELEVATION 1000
UTM Coordinates 5137083N
NAD 27 469870E

COMMENCED 6-Sep-02
COMPLETED 6-Sep-02
DRILLING CO. Agile Drilling

CORE SIZE BQ thinwall
CASING LEFT left
LOGGED BY Beilhartz *D. Beilhartz*
CORE LOCATION 999 Penage Lake road

CLAM 1247346

SURVEY INFORMATION

DEPTH 0
INCLINATION -45
AZIMUTH 100

Sperry-Sun

Date Printed: **10-Nov-02**

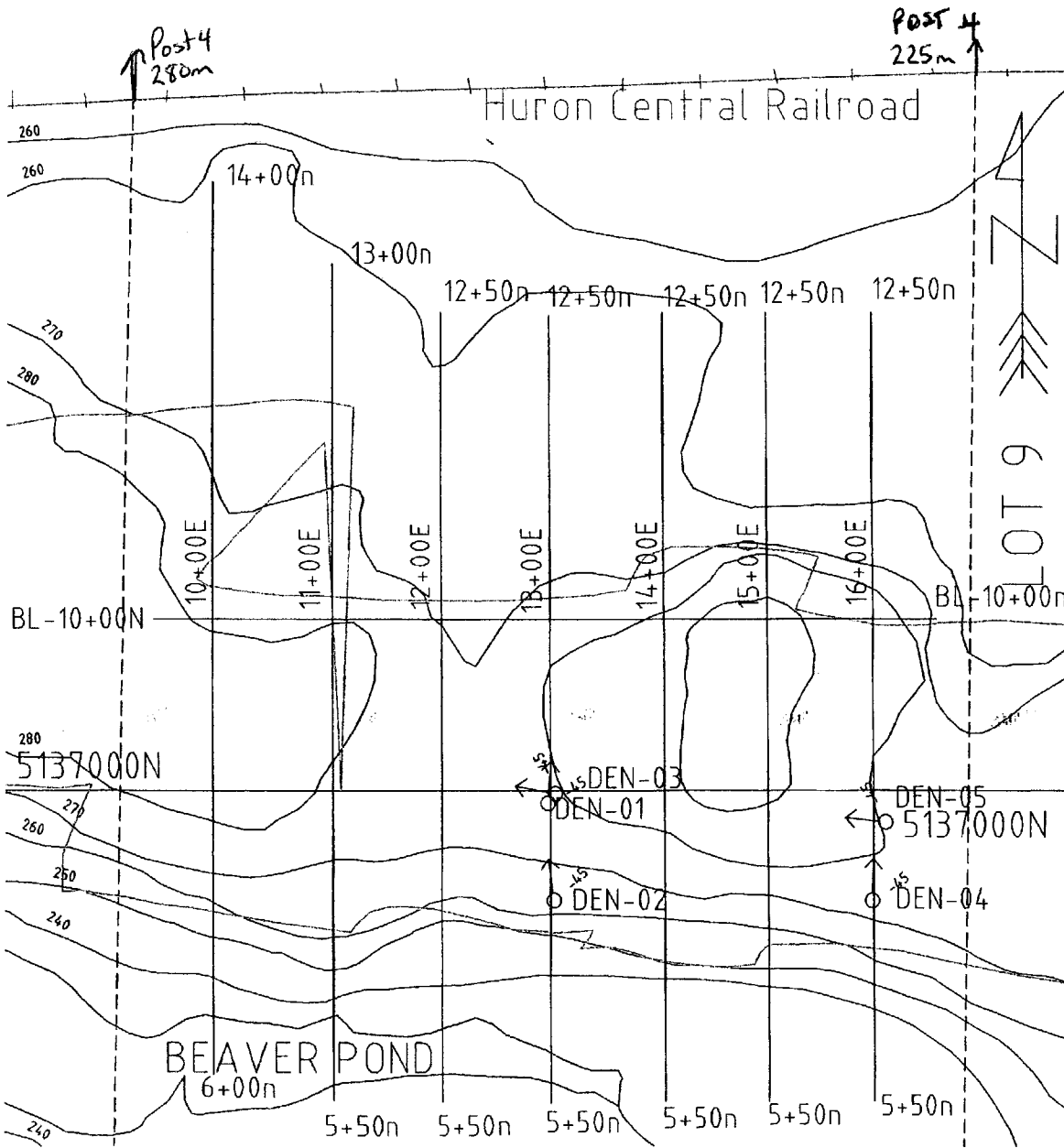


DEN-03

INTERVAL	LENGTH	LITHOLOGY	DESCRIPTION	SAMPLE	INTERVAL	LENGTH	Cu (ppm)	Ni (ppm)	Au (ppb)	Pt (ppb)	Pd (ppb)	
0.00	8.70	8.70	Diabase Medium grained, light to medium green, mafic Intrusive. Nipissing Diabase. Comprised of mainly of amphibolitized pyroxenite. Masssive to weakly foliated. Occasional 1-5 mm quartz calcite veinlets. No sulfides observed.									
8.70	17.78	9.08	Diabase Medium grained, light to medium green, mafic Intrusive. Nipissing Diabase. Comprised of mainly of amphibolitized pyroxenite. Masssive to weakly foliated. Occasional 1-5 mm quartz calcite veinlets. Trace to locally 5% disseminated pyrrhotite in blebs up to 3mm. Trace to locally 1% chalcopyrite associated with the pyrrhotite. Graphite is commonly associated with the sulfides and occurs as disseminated grains and globuals. locally the globuals form massive patches.									
			Trace pyrrhotite, Rare chalcopyrite	81051	6.10	7.62	1.52	14	151	10	22	14
			Trace pyrrhotite, Rare chalcopyrite	81052	7.62	8.27	0.65	10	113	6		12
			Trace pyrrhotite, Rare chalcopyrite, 1% graphite, 5% quartz veining.	81053	8.27	8.70	0.43	501	196			11
			3% pyrrhotite, Trace to 1% chalcopyrite, 10% graphite.	81054	8.70	9.21	0.51	3545	3218			
			1% pyrrhotite, trace chalcopyrite, 3-5% graphite.	81055	9.21	9.67	0.46	618	1477	26	98	146
			1% pyrrhotite, trace chalcopyrite, 1-2% graphite.	81056	9.67	10.27	0.60	1033	1735	25	87	161
			2-4% pyrrhotite, trace to 1% chalcopyrite, 3-5% graphite.	81057	10.27	10.67	0.40	3579	5624	54	82	200
			Trace pyrrhotite, Rare chalcopyrite, 3-5% graphite.	81058	10.67	11.20	0.53	925	1049	71	144	243
			Trace pyrrhotite, trace chalcopyrite, trace graphite.	81059	11.20	11.58	0.38	36	152	28	48	87
									17			15

DEN-03

INTERVAL	LENGTH	LITHOLOGY	DESCRIPTION	SAMPLE	INTERVAL	LENGTH	Cu (ppm)	Ni (ppm)	Au (ppb)	Pt (ppb)	Pd (ppb)	
			2-4% pyrrhotite, trace chalcopyrite, 40% graphite.	81060	11.58	12.03	0.45	2409	2321			
			1% pyrrhotite, trace chalcopyrite, 3-5% graphite.	81061	12.03	12.83	0.80	1209	1130	32	364	202
			Trace pyrrhotite, Rare chalcopyrite, 1-3% graphite.	81062	12.83	13.54	0.71	513	328	29	68	103
			Trace pyrrhotite, 1% graphite.	81063	13.54	14.27	0.73	224	270	37	52	100
			4-5% pyrrhotite, trace chalcopyrite, 30-40% graphite.	81064	14.27	15.58	1.31	1125	1070	39		58
			Trace pyrrhotite, trace chalcopyrite, 5% graphite.	81065	15.58	15.63	0.05	254	572	58	362	823
			Trace pyrrhotite, trace chalcopyrite, 1% graphite, 3% quartz veining.	81066	15.63	17.10	1.47	420	507	19	98	229
			Trace pyrrhotite, 2-3% graphite.	81067	17.10	17.28	0.18	117	137	16	37	58
			1-2% pyrrhotite, trace chalcopyrite, 1-3% graphite.	81068	17.28	17.78	0.50	394	213		35	52
			Trace pyrrhotite, trace chalcopyrite.	81069	17.78	18.29	0.51	75	112	17	100	173
17.78	21.40	3.62	Diabase									39
			Medium grained, light to medium green, mafic Intrusive. Nipissing Diabase. Comprised of mainly of amphibolitized pyroxenite. Massive to weakly foliated. Occasional 1-5 mm quartz calcite veinlets. No sulfides observed.									
21.40			End Of Hole									



CONSOLIDATED
VENTUREX
HOLDINGS LTD

Denison Property
Claim 1247342
Lot 9 Conc 2 Denison Township

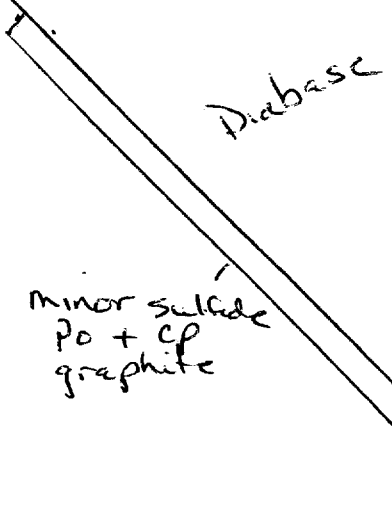
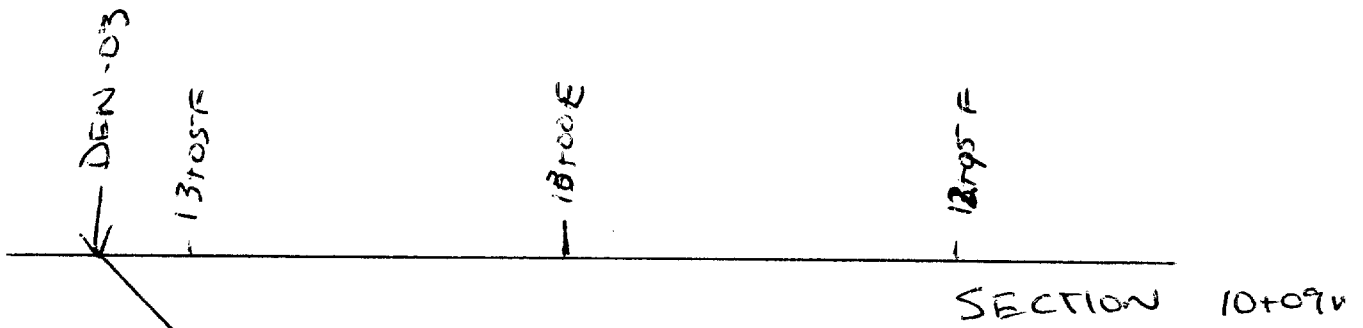
Prospecting and Geology
Diabase Contacts

Mapping By:
Doug MacMillan
Scale Drawn By:
David Beilhartz

D. Beilhartz

Drill Hole Layout

- DEN-01
- Diabase Contacts
- Contour Lines
Interval 10m
- Buildings



DEN-03

SECTION 10+09N

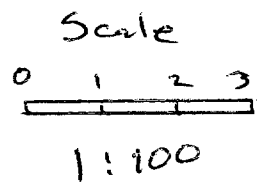
Azimuth 280°

Dip -45

DENISON TWP

CLAIM 1247346

21.5



O. B. Hart

2.24665

DEN-04

Consolidated Venturex Holdings

DIAMOND DRILL RECORD

Denison Property

HOLE NUMBER DEN-04

LOCATION 16+01E / 9+13N
 SURVEYED No
 LENGTH 61.0m
 GRID BEARING 360
 AZIMUTH 360
 INCLINATION -45
 COLLAR ELEVATION 1000
 UTM Coordinates 5137083N
 NAD 27 469870E

COMMENCED 10-Sep-02
 COMPLETED 11-Sep-02
 DRILLING CO. Agile Drilling

CORE SIZE BQ thinwall
 CASING LEFT left
 LOGGED BY Beilhartz *D. Beilhartz*
 CORE LOCATION 999 Penage Lake road
 CLAIM 1247346

SURVEY INFORMATION

DEPTH 0

INCLINATION -45

AZIMUTH 180

Sperry-Sun

Date Printed: 10-Nov-02

Consolidated Venturex Holdings

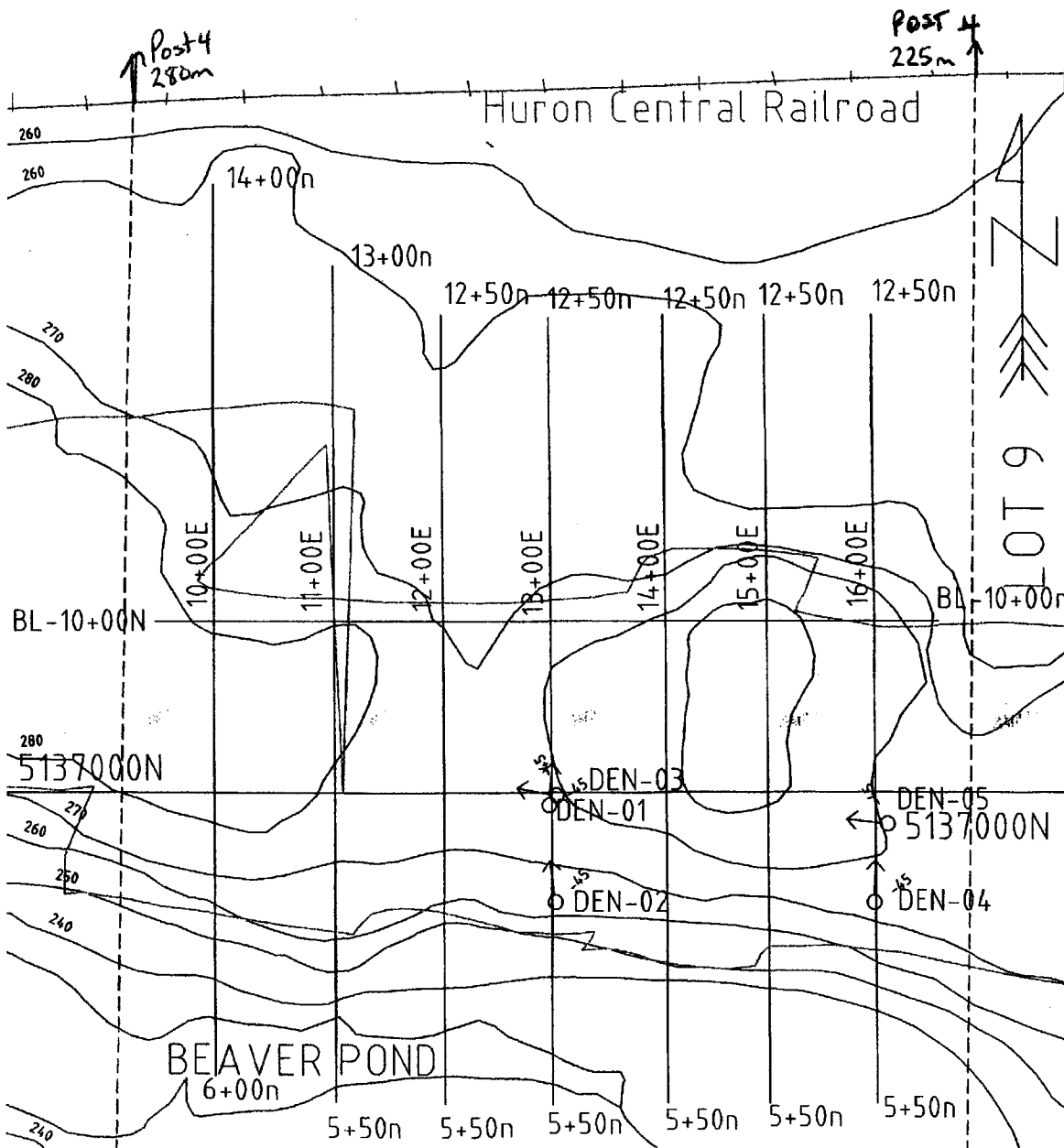


DEN -04

INTERVAL	LENGTH	LITHOLOGY	DESCRIPTION	SAMPLE	INTERVAL	LENGTH	Cu (ppm)	Ni (ppm)	Au (ppb)	Pt (ppb)	Pd (ppb)
0.00	3.35	3.35	Overburden								
	3.35	39.62	36.27	Diabase							
				Casing, sand and gravel.							
				Medium grained, light to medium green, mafic Intrusive. Nipissing Diabase. Comprised of mainly of amphibolitized pyroxenite. Masssive to weakly foliated. Occasional 1-5 mm quartz calcite veinlets. No sulfides observed.							
				5-7% quartz veining, weakly brecciated.	81070	10.90	11.60	0.70			
				1% quartz veining	81071	11.60	11.83	0.23	9	<5	35
				Trace pyrrhotite. 3-4% quartz viening	81072	20.20	20.80	0.60	<5	37	43
				1-2% pyrrhotite.	81073	31.50	31.90	0.40	10	<5	17
				1-2% pyrrhotite. Trace pyrite, 1-2% quartz veining	81074	31.90	32.42	0.52	6	<5	20
									11	28	22
39.62	48.13	8.51	Diabase								
				Medium grained, light to medium green, mafic Intrusive. Nipissing Diabase. Comprised of mainly of amphibolitized pyroxenite. Foliated to weakly sheared at 60 to 70 degrees. Locally up to 25% quartz veining. Quartz is white to light gray. No sulfides observed. Shearing may represent the IP response.							
				As above.	81075	39.62	40.37	0.75	7	15	10
				80% quartz veining.	81076	40.37	41.00	0.63	<5	<5	13
				80% quartz veining.	81077	41.00	41.66	0.66	13	<5	<5
				5% quartz veining. Trace pyrite.	81078	41.66	42.05	0.39	<5	<5	<5
				5% quartz veining.	81079	42.05	43.23	1.18	7	17	15
				3-4% quartz veining.	81080	43.23	44.37	1.14	14	20	12
				1-2% quartz veining.	81081	44.37	45.55	1.18	10	<5	12
				80% quartz veining.	81082	45.55	46.00	0.45	14	<5	<5
				3-4% quartz veining.	81083	46.00	47.10	1.10	10	19	17
				10-15% quartz veining.	81084	47.10	48.13	1.03	8	<5	13
									8	<5	13

DEN -04

INTERVAL	LENGTH	LITHOLOGY	DESCRIPTION	SAMPLE	INTERVAL	LENGTH	Cu (ppm)	Ni (ppm)	Au (ppb)	Pt (ppb)	Pd (ppb)
48.13	61.00	12.87	Diabase								
			Medium grained , light to medium green, mafic Intrusive. Nipissing Diabase. Comprised of mainly of amphibolitized pyroxenite. Massive to weakly foliated. Occasional 1-5 mm quartz calcite veinlets. No sulfides observed.								
61.00			End of Hole								



CONSOLIDATED
VENTUREX
HOLDINGS LTD

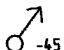

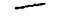

Denison Property
Claim 1247342
Lot 9 Conc 2 Denison Township

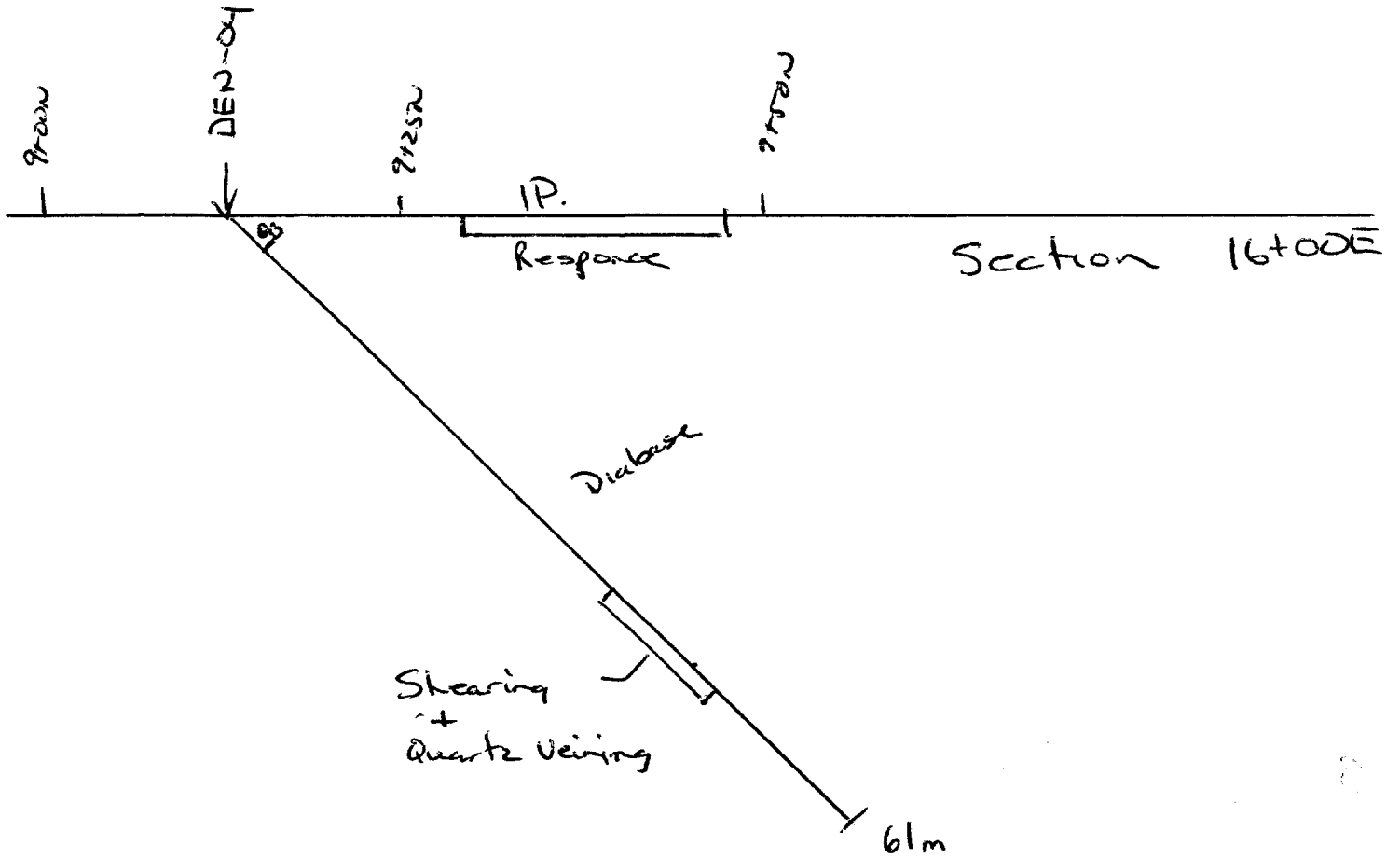
Prospecting and Geology
Diabase Contacts

Mapping By:
Doug MacMillan
Scale  Drawn By:
David Beilhartz

D. Beilhartz

Drill Hole Layout

-  DEN-01
-  Diabase Contacts
-  Contour Lines
Interval 10m
-  Buildings



DEN-04

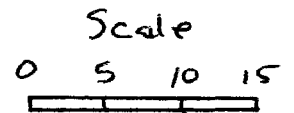
SECTION 16+00E

Azimuth 360

DIP -45°

DENISON TWP

CLAIM 1247346



1:500

A. Bulhart

DEN-05

Consolidated Venturix Holdings

DIAMOND DRILL RECORD

Denison Property

HOLE NUMBER DEN-05

LOCATION 16+05E / 9+70N
SURVEYED No
LENGTH 30.5m
GRID BEARING 270
AZIMUTH 270
INCLINATION -45
COLLAR ELEVATION 1000
UTM Coordinates 5137113N
 469841E

COMMENCED 13-Sep-02
COMPLETED 13-Sep-02
DRILLING CO. Agile Drilling

CORE SIZE BQ thinwall
CASING LEFT left
LOGGED BY Beilhartz *O. Beilhartz*
CORE LOCATION 999 Penage Lake road
CLAIM 1247346

SURVEY INFORMATION

DEPTH 0
INCLINATION -45
AZIMUTH 90

Sperry-Sun

Date Printed: 10-Nov-02

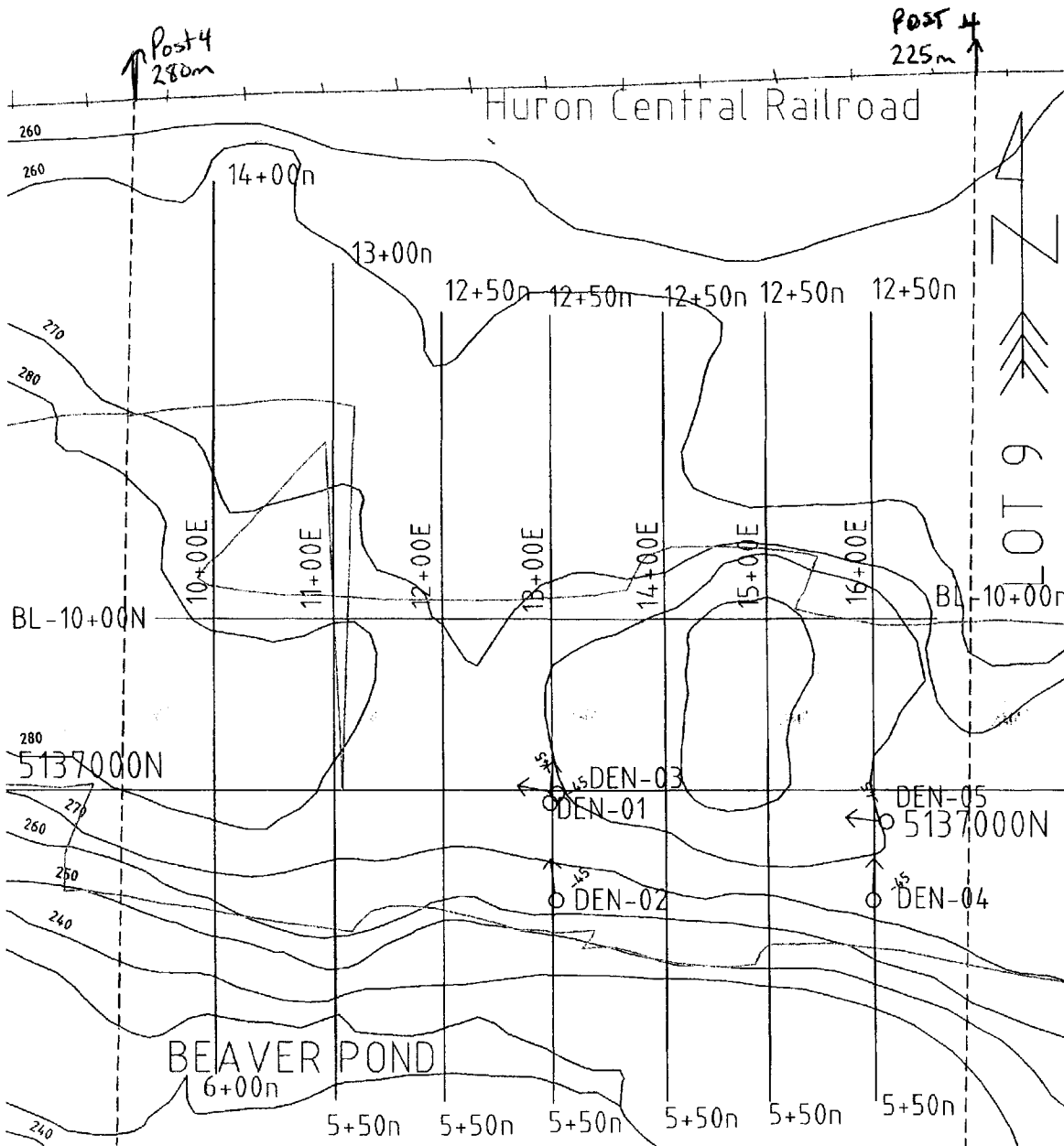


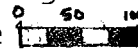
DEN-05

INTERVAL	LENGTH	LITHOLOGY	DESCRIPTION	SAMPLE	INTERVAL	LENGTH	Cu (ppm)	Ni (ppm)	Au (ppb)	Pt (ppb)	Pd (ppb)	
0.00	1.50	1.50	Overburden									
1.50	10.07	8.57	Diabase									
			Casing, sand and gravel.									
			Medium grained, light to medium green, mafic Intrusive. Nipissing Diabase. Comprised of mainly of amphibolitized pyroxenite. Masssive to weakly foliated. Occasional 1-5 mm quartz calcite veinlets. No sulfides observed. Rare speck of graphite.									
10.07	18.65	8.58	Diabase									
			Medium grained, light to medium green, mafic Intrusive. Nipissing Diabase. Comprised of mainly of amphibolitized pyroxenite. Masssive to weakly foliated. Occasional 1-5 mm quartz calcite veinlets. Trace to 2% pyrrhotite and rare chalcopyrite, with minor grains of graphite.									
			Trace pyrrhotite	81085	10.07	10.98	0.91	764	1088	23	147	153
			1-2% pyrrhotite, trace chalcopyrite.	81086	10.98	11.51	0.53	1019	2274	99	289	488
			Trace to 1% pyrrhotite, trace chalcopyrite.	81087	11.51	12.10	0.59	2077	4560	113	437	730
			Trace pyrrhotite	81088	12.10	12.62	0.52	1896	1961	117	363	544
			1-2% pyrrhotite, trace chalcopyrite, 2-3% graphite.	81089	12.62	13.28	0.66					
							29	181	18	75	42	
			1-2% pyrrhotite, trace chalcopyrite, 3-4% graphite.	81090	13.28	13.88	0.60					
							96	257	26	98	88	
			3-4% pyrrhotite, Trace chalcopyrite, 5-7% graphite.	81091	13.88	14.15	0.27					
							1795	2212	58	189	305	
			1% pyrrhotite, trace chalcopyrite, 1-2% graphite, 3-5% quartz veining.	81092	14.15	15.00	0.85					
							470	198	<5	41	65	
			trace pyrrhotite, rare chalcopyrite, 1% graphite, 1-2% quartz veining.	81093	15.00	15.58	0.58					
							80	123	<5	20	13	
			1% pyrrhotite, trace chalcopyrite, 1-2% graphite.	81094	15.58	16.40	0.82					
							113	156	<5	38	<5	
			1-2% pyrrhotite, trace chalcopyrite, 1-2% graphite.	81095	16.40	16.65	0.25					
							1178	1559	32	276	241	
			1% pyrrhotite, trace chalcopyrite, 1-2% graphite.	81096	16.65	17.03	0.38					
							103	122	<5	<5	<5	

DEN-05

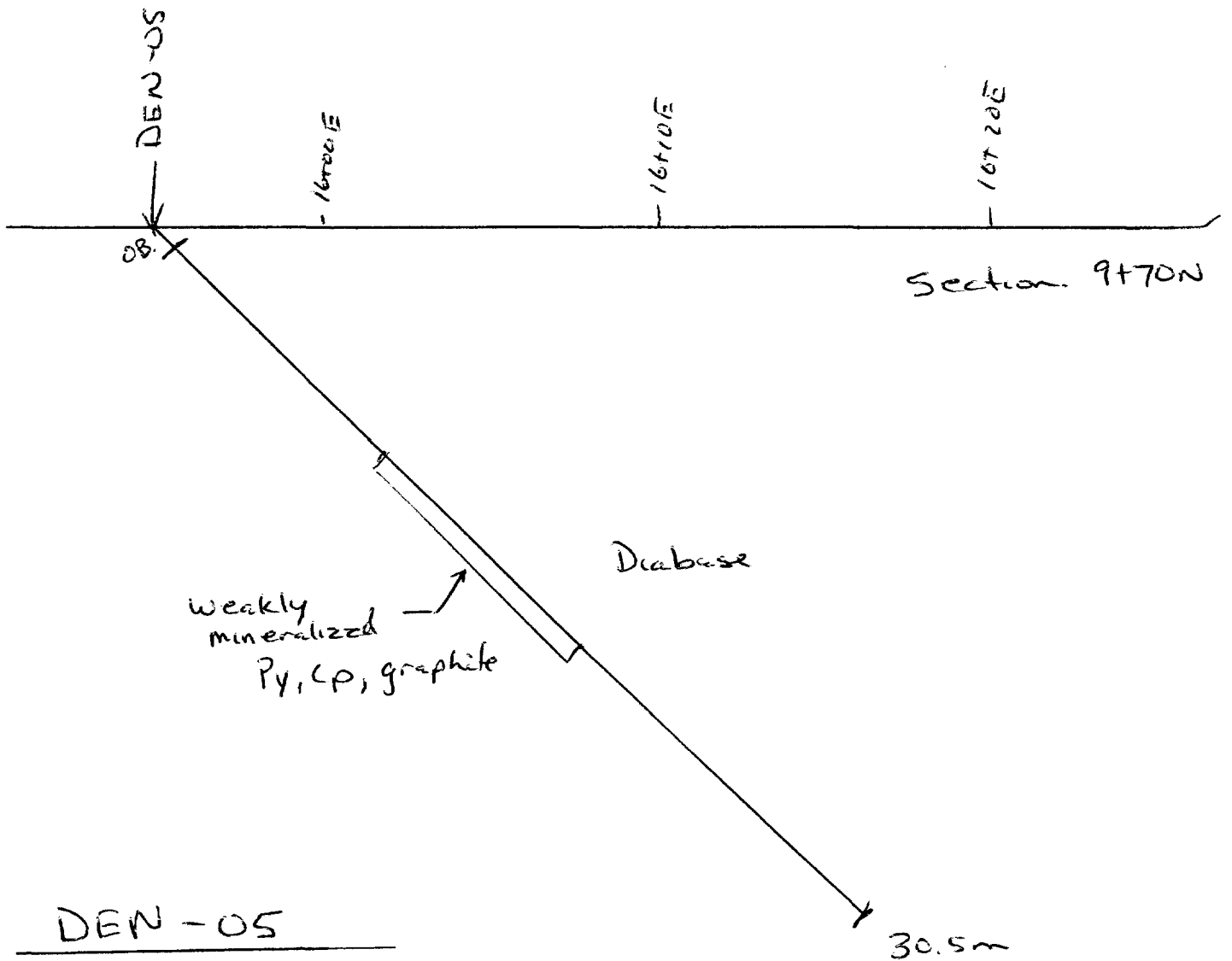
INTERVAL	LENGTH	LITHOLOGY	DESCRIPTION	SAMPLE	INTERVAL	LENGTH	Cu (ppm)	Ni (ppm)	Au (ppb)	Pt (ppb)	Pd (ppb)	
			3-4% pyrrhotite, Trace chalcopyrite. 1-2% graphite. 3% quartz veining.	81097	17.03	17.55	0.52	2585	1473	39	92	174
			Trace pyrrhotite, trace chalcopyrite.	81098	17.55	17.95	0.40	134	128	<5	<5	<5
			3-5% pyrrhotite, trace to 1% chalcopyrite.	81099	17.95	18.20	0.25	1962	1983	50	59	165
			Trace pyrrhotite.	81100	18.20	18.65	0.45	90	115	<5	41	<5
18.65	21.95	3.30	Diabase									
			Medium grained, light to medium green, mafic Intrusive. Nipissing Diabase. Comprised of mainly of amphibolitized pyroxenite. Masssive to weakly foliated. Occasional 1-5 mm quartz calcite veinlets. No sulfides observed.									
			20.42m. 2-3 cm quartz feldspar vein. 20.64m. 2 cm quartz calcite vein.									
21.95	24.40	2.45	Diabase									
			Medium to coarse grained, light to medium green, mafic Intrusive. Nipissing Diabase. Comprised of mainly of amphibolitized pyroxenite. 20% felpspar, weakly pegmatitic phase, with minor Kspar. Masssive to weakly foliated. Occasional 1-5 mm quartz calcite veinlets. No sulfides observed.									
24.40	30.50	6.10	Diabase									
			Medium grained, light to medium green, mafic Intrusive. Nipissing Diabase. Comprised of mainly of amphibolitized pyroxenite. Masssive to weakly foliated. Occasional 1-5 mm quartz calcite veinlets. No sulfides observed.									
30.50			End of Hole									



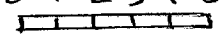
CONSOLIDATED
 VENTUREX
 HOLDINGS LTD
 Denison Property
 Claim 1247342
 Lot 9 Conc 2 Denison Township
 Prospecting and Geology
 Diabase Contacts
 Mapping By:
 Doug MacMillan
 Scale  Drawn By:
 David Beilhartz

D. Beilhartz
Drill Hole Layout

-  DEN-01
-  Diabase Contacts
-  Contour Lines
Interval 10m
-  Buildings



DEN-05
 Section 16+00E
 Azimuth 270
 Dip -45
 DENISON TWP.
 CLAIM 1247346

Scale
 0 1 2 3 4 5m

 1:200

D. Berthel



1070 LITHIUM DRIVE, UNIT 2 THUNDER BAY, ONTARIO P7B 6G3
PHONE (807) 626-1630 FAX (807) 623 6820 EMAIL accuracy@tbaytel.net WEB www accurassay.com

Certificate of Analysis

Friday, October 25, 2002

Beilhartz, David
Box 1, Site 16, RR #1
Whitefish Falls, ON, CA
POP2H0
Ph#: (705) 866-1631
Fax#:
Email

Date Received : 24-Oct-02
Date Completed : 25-Oct-02
Job # 200240962
Reference : Ref 200240942
Sample #: 33 Pulp's

Accurassay #	Client Id	Ag ppm	Co ppm	Cu ppm	Fe ppm	Ni ppm	Pb ppm	Zn ppm
37900	81051			14		151		
37901	81052			10		113		
37902	81053			501		196		
37903	81054			3545		3218		
37904	81055			618		1477		
37905	81056			1033		1735		
37906	81057			3579		5624		
37907	81058			925		1049		
37908	81059			36		152		
37909	81060			2409		2321		
37910	Check 81060			2445		2375		
37911	81061			1209		1130		
37912	81062			513		328		
37913	81063			224		270		
37914	81064			1125		1070		
37915	81065			254		572		
37916	81066			420		507		
37917	81067			117		137		
37918	81068			394		213		
37919	81069			75		112		
37920	Check 81069			79		109		
37921	81085			764		1088		
37922	81086			1019		2274		

PROCEDURE CODES: AL400, AL4Ni

Certified By: 

AL901-0064-10/25/2002 03:45 PM



41I06NW2010

2.24665

DENISON

060



1070 LITHIUM DRIVE, UNIT 2 THUNDER BAY, ONTARIO P7B 6G3
PHONE (807) 626-1630 FAX (807) 623 6820 EMAIL accuracy@tbaytel.net WEB www accurassay.com

Certificate of Analysis

Friday, October 25, 2002

Beilhartz, David
Box 1, Site 16, RR #1
Whitefish Falls, ON, CA
POP2H0
Ph#: (705) 866-1631
Fax#:
Email

Date Received : 24-Oct-02
Date Completed : 25-Oct-02
Job # 200240962
Reference : Ref 200240942
Sample #: 33 Pulp's

Accurassay #	Client Id	Ag ppm	Co ppm	Cu ppm	Fe ppm	Ni ppm	Pb ppm	Zn ppm
37923	81087			2077		4560		
37924	81088			1896		1961		
37925	81089			29		181		
37926	81090			96		257		
37927	81091			1795		2212		
37928	81092			470		198		
37929	81093			80		123		
37930	Check 81093			81		124		
37931	81094			113		156		
37932	81095			1178		1559		
37933	81096			103		122		
37934	81097			2585		1473		
37935	81098			134		128		
37936	81099			1962		1983		
37937	81100			90		115		

PROCEDURE CODES: AL4Cu, AL4Ni

Certified By: 

AL901-0064-10/25/2002 03:45 PM



1070 LITHIUM DRIVE, UNIT 2 THUNDER BAY, ONTARIO P7B 6G3
PHONE (807) 626-1630 FAX (807) 623 6820 EMAIL accuracy@tbaytel.net WEB www accurassay.com

Certificate of Analysis

Monday, October 21, 2002

Beilhartz, David
Box 1, Site 16, RR #1
Whitefish Falls, ON, CA
POP2H0
Ph#: (705) 866-1631
Fax#:
Email

Date Received : 13-Oct-02
Date Completed :
Job # 200240942
Reference : RUSH
Sample #: 50 Rock

Accurassay #	Client Id	Au ppb	Pt ppb	Pd ppb	Rh ppb
36932	81051	10	22	14	
36933	81052	6	<15	12	
36934	81053	<5	<15	11	
36935	81054	26	98	146	
36936	81055	25	87	161	
36937	81056	54	82	200	
36938	81057	71	144	243	
36939	81058	28	48	87	
36940	81059	17	<15	15	
36941	81060	32	364	202	
36942 Check	81060	23	418	173	
36943	81061	29	68	103	
36944	81062	37	52	100	
36945	81063	39	<15	58	
36946	81064	58	362	823	
36947	81065	19	98	229	
36948	81066	16	37	58	
36949	81067	<5	35	52	
36950	81068	17	100	173	
36951	81069	12	<15	39	
36952	81070	9	<15	35	
36953 Check	81070	<5	<15	23	

PROCEDURE CODES: Au Pt Pd

Certified By: 



1070 LITHIUM DRIVE, UNIT 2 THUNDER BAY, ONTARIO P7B 6G3
PHONE (807) 626-1630 FAX (807) 623 6820 EMAIL accuracy@tbaytel.net WEB www.accurassay.com

Certificate of Analysis

Monday, October 21, 2002

Beilhartz, David
Box 1, Site 16, RR #1
Whitefish Falls, ON, CA
POP2H0
Ph#: (705) 866-1631
Fax#:
Email

Date Received : 13-Oct-02
Date Completed :
Job # 200240942
Reference : RUSH
Sample #: 50 Rock

Accurassay #	Client Id	Au ppb	Pt ppb	Pd ppb	Rh ppb
36954	81071	<5	37	43	
36955	81072	10	<15	17	
36956	81073	6	<15	20	
36957	81074	11	28	22	
36958	81075	7	15	10	
36959	81076	<5	<15	13	
36960	81077	13	<15	<10	
36961	81078	<5	<15	<10	
36962	81079	7	17	15	
36963	81080	14	20	12	
36964	Check 81080	13	16	11	
36965	81081	10	<15	12	
36966	81082	14	<15	<10	
36967	81083	10	19	17	
36968	81084	8	<15	13	
36969	81085	23	147	153	
36970	81086	99	289	488	
36971	81087	113	437	730	
36972	81088	117	363	544	
36973	81089	18	75	42	
36974	81090	26	98	88	
36975	Check 81090	35	117	106	

PROCEDURE CODES: Au Pt Pd

Certified By: 



1070 LITHIUM DRIVE, UNIT 2 THUNDER BAY, ONTARIO P7B 6G3
 PHONE (807) 626-1630 FAX (807) 623 6820 EMAIL accuracy@tbaytel.net WEB www accurassay.com

Certificate of Analysis

Monday, October 21, 2002

Beilhartz, David
 Box 1, Site 16, RR #1
 Whitefish Falls, ON, CA
 P0P2H0
 Ph#: (705) 866-1631
 Fax#:
 Email

Date Received : 13-Oct-02
 Date Completed :
 Job # 200240942
 Reference : RUSH
 Sample #: 50 Rock

Accurassay #	Client Id	Au ppb	Pt ppb	Pd ppb	Rh ppb
36976	81091	58	189	305	
36977	81092	<5	41	65	
36978	81093	<5	20	13	
36979	81094	<5	38	<10	
36980	81095	32	276	241	
36981	81096	<5	<15	<10	
36982	81097	39	92	174	
36983	81098	<5	<15	<10	
36984	81099	50	59	165	
36985	81100	<5	41	<10	
36986 Check	81100	<5	58	<10	

PROCEDURE CODES: AU Pt Pd

Certified By: 

Date: 2002-DEC-18

GEOSCIENCE ASSESSMENT OFFICE
933 RAMSEY LAKE ROAD, 6th FLOOR
SUDBURY, ONTARIO
P3E 6B5

CONSOLIDATED VENTUREX HOLDINGS LTD.
2489 BELLEVUE AVENUE
WEST VANCOUVER, BRITISH COLUMBIA
V7V 1E1 CANADA

Tel: (888) 415-9845
Fax: (877) 670-1555

Submission Number: 2.24665
Transaction Number(s): W0270.01902

Dear Sir or Madam

Subject: Approval of Assessment Work

We have approved your Assessment Work Submission with the above noted Transaction Number(s). The attached Work Report Summary indicates the results of the approval.

At the discretion of the Ministry, the assessment work performed on the mining lands noted in this work report may be subject to inspection and/or investigation at any time.

If you have any question regarding this correspondence, please contact LUCILLE JEROME by email at lucille.jerome@ndm.gov.on.ca or by phone at (705) 670-5858.

Yours Sincerely,



Ron Gashinski
Senior Manager, Mining Lands Section

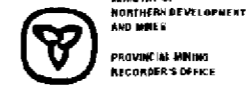
Cc: Resident Geologist

David E Beilhartz
(Agent)

Consolidated Venturex Holdings Ltd.
(Assessment Office)

Assessment File Library

Consolidated Venturex Holdings Ltd.
(Claim Holder)



MINING LAND TENURE MAP

Date / Time of Issue May 10 2001 13:01h Eastern

TOWNSHIP / AREA DENISON PLAN G-4033

ADMINISTRATIVE DISTRICTS / DIVISIONS
Mining Division Sudbury
Land Titles/Registry Division SUDBURY
Ministry of Natural Resources District SUDBURY

TOPOGRAPHIC

- Agriculture Remains
- Township
- Contour Line
- Watercourse
- Road
- Centre Line
- Centre Line - Asymmetrical Division
- Mine Shaft
- Railway
- Road
- Trail
- Natural Gas Pipeline
- Hydro Line
- Communication Line
- Wooded Area
- Municipal - Cemetery, Historical, etc. Contour

LAND TENURE

- Freehold Patent
 - Surface and Mining Rights
 - Surface Rights Only
 - Mining Rights Only
- Leased Patent
 - Surface and Mining Rights
 - Surface Rights Only
 - Mining Rights Only
- License of Occupation
 - Surface and Mining Rights
 - Surface Rights Only
 - Mining Rights Only
- Land Use Permit
- Order in Council
- Water Power Lease Agreement
- Mining Claim

LAND TENURE WITHDRAWALS

- Areas Withdrawn from Operation Mining Act Withdrawal Type 1
- Areas Withdrawn from Operation Mining Act Withdrawal Type 2
- Areas Withdrawn from Operation Mining Act Withdrawal Type 3
- Areas Withdrawn from Operation Mining Act Withdrawal Type 4
- Areas Withdrawn from Operation Mining Act Withdrawal Type 5
- Areas Withdrawn from Operation Mining Act Withdrawal Type 6
- Areas Withdrawn from Operation Mining Act Withdrawal Type 7
- Areas Withdrawn from Operation Mining Act Withdrawal Type 8
- Areas Withdrawn from Operation Mining Act Withdrawal Type 9
- Areas Withdrawn from Operation Mining Act Withdrawal Type 10

IMPORTANT NOTICES



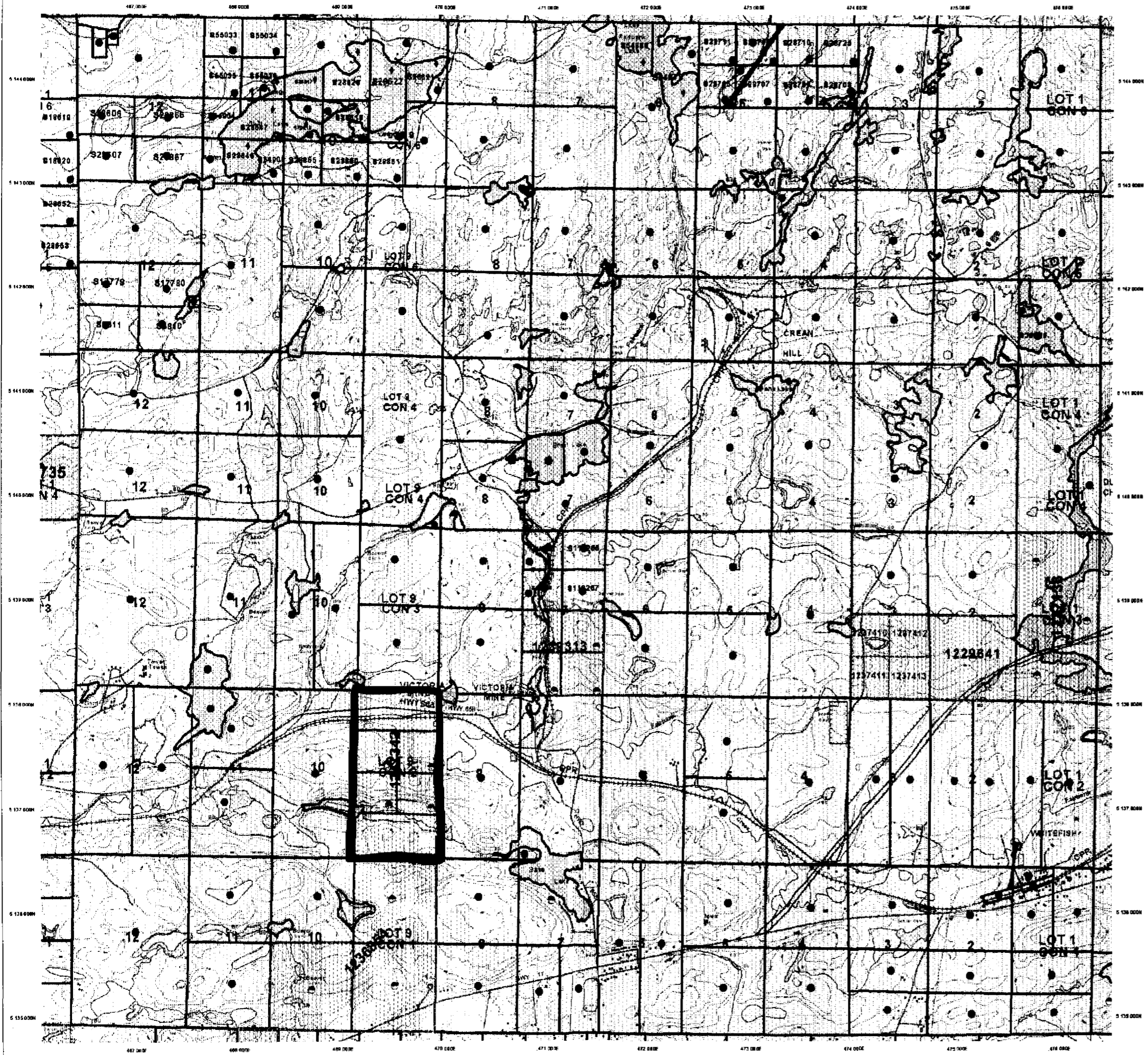
LAND TENURE WITHDRAWAL DESCRIPTIONS

Useable Type Date Description
7841 Well Jan 1 2001 SAC 2516-21-82 Z2088/2 R-6 140 100

IMPORTANT NOTICES

Areas under which special regulations, limitations or conditions apply that affect mineral prospecting and mineral development activities.

2.24665
PDRILL
ASSAYS



Those wishing to obtain mining claims should consult with the Provincial Mining Recorder's Office of the Ministry of Northern Development and Mines for additional information on the status of the lands shown herein. This map is not intended for navigation, survey, or land title information purposes as the information shown on this map is compiled from various sources. Completeness and accuracy are not guaranteed. Additional information may also be obtained through the local Townships or Registry Office, or the Ministry of Natural Resources. The information shown is derived from the Mining Act and is available in the Provincial Mining Recorder's Office at the time of downloading from the Ministry of Northern Development and Mines web site.

General Information and Limitations
Contact Info: Provincial Mining Recorder's Office, 1st Floor, 255 University Ave, Sudbury, ON P5A 5G6. Tel: 1-800-443-6665, Fax: 1-877-63-1444.
Map Detail: M42-93, 1:50,000, UTM Zone 17N, 4120800, 5130000. Topographic Date: SPARCIAL. Land Information Online. Mining Land Tenure Recorder's Office.

This map may not show all rights of land tenure and interests in land including certain patents, leases, easements, rights of way, bedding rights, licences, or other forms of disposition of rights and interests from the Crown. Also, certain land tenure and interests that would not be shown on this map may not be shown.



41106NW2010 2.24665 DENISON