

December 1, 1986.



41106SW0016 2.9626 DIEPPE

010

Officers and Directors,
Uranex Resources Limited,
Box 2038, Suite 404,
20 Eglinton Ave, West,
Toronto. M4R 1K8

RECEIVED

DEC 16 1986

MINING LANDS SECTION

Gentlemen,

On November 1, 1986 I visited the Truman-Dieppe Townships Property with E.M. Hall, exploration technician, and together we grab sampled the two large pits near the northwest corner of claim S810197.

Fifteen (15) grab samples representing various types and grades of fresh and oxidized sulphide mineralization were collected. A brief description of each sample follows.

<u>Sample Number</u>	<u>Description</u>
<u>East Pit</u>	
8336	blue quartz + minor pyrite
8337	Qtz + abundant marcasite, vuggy
8338	dark brown, solid, oxidized material
8339	Qtz + oxidation products + pyrite
8340	solid, heavily oxidized, dark brown
8341	mostly qtz + speck cpy + some yell. oxid. mat.
8342	E. wall: overhang, loose mat. some cpy
<u>West Pit</u>	
8343	Mass. Pyrrhotite + cpy + py cubes
8344	Mass. Pyrrhotite + streaks & bands of cpy
8345	Blotchy Pyrrhotite + cpy
8346	Mixture of rock + po + py?
8347	Banded py and po + qtz
8348	Yell. oxidation (limonite)
8349	Massive pyrrhotite
8350	oxidized po

The above listed samples weighed from 1 to 3 pounds each and all were assayed for Cobalt, Platinum, and Palladium. The assay results as provided by X-Ray Assay Laboratories Limited are attached hereto.

Sampling and Assay Results

Seven (7) samples were collected from the East Pit and eight (8) from the West Pit. The pits are about 70 feet apart and very obviously occur on the same zone of mineralization. To the east of the East Pit, the zone is partially exposed on surface intermittently for well over 100 feet. No sulphides can be seen in this area, just vein quartz, but some sulphides may occur under the overburdened sections. Obviously the quantity of sulphide mineralization is decreasing to the east. The West Pit is far richer in sulphides - pyrrhotite, pyrite, and chalcopyrite. The sulphide zone is also much wider than in the East Pit. To the west the zone is marked by a narrow valley which correlates with a well-defined VLF conductor. Diamond drill results from several years ago indicate the sulphide zone continues westward for several hundreds of feet.

Cobalt Values

Only one cobalt value of significance, 0.96 lbs. per ton, was detected in the East Pit. The other 6 samples returned negligible values.

The West Pit samples, 8 in all, returned cobalt values ranging from a low of 0.60 lbs. per ton to a high of 1.20 lbs. per ton. However, all of the samples did contain cobalt values in excess of 1/2 pound per ton.

Platinum and Palladium Values

Neither pit returned any significant platinum metals values although the West Pit (in terms of parts per billion) had twice the amount of platinum as the East Pit. The best palladium value occurred in the East Pit although palladium values are more widespread and generally higher in the West Pit. Altogether, none of the palladium values are significant, with most of the better values falling in the area of 0.001 ozs. per ton.

Conclusions and Recommendations

1. Copper and nickel occur in the mineralized zone but were not assayed for during the present program as the known tenor of the zone precludes it having economic potential under current economic conditions in terms of copper and nickel only.
2. The western part of the zone appears to contain cobalt values of the order of 1 lb. per ton. This may improve to the west as earlier, sparse data, seem to indicate.
3. Platinum and palladium values are not significant in either pit although the West Pit values appear to be higher than the East Pit. The PGM values may increase to the west although, unlike the cobalt indications, there is no data to suggest whether or not this may be true.
4. Previous diamond drill indications show that the sulphide mineralization persists for about 250 feet of the known length of 600 feet. The VLF survey results indicate the zone to have a much greater length.

This report is respectfully submitted,

Harper Consulting Services Inc.

H.G. Harper
H.G. Harper, P.Eng., President.

Volume Label: UranexEng

Disk No.: 38-3

Filename: GrabSmp1

*68.1058
Jual*

CERTIFICATE OF ANALYSIS

TO: URANEX RESOURCES LIMITED
ATTN: GRANT HARPER
P.O. BOX 2038
20 EGLINTON AVENUE WEST, SUITE 404
TORONTO, ONTARIO M4R 1K8

CUSTOMER NO. 1364

DATE SUBMITTED
3-NOV-86

REPORT 29977

REF. FILE 25641-A1

15 ROCKS

WERE ANALYSED AS FOLLOWS:

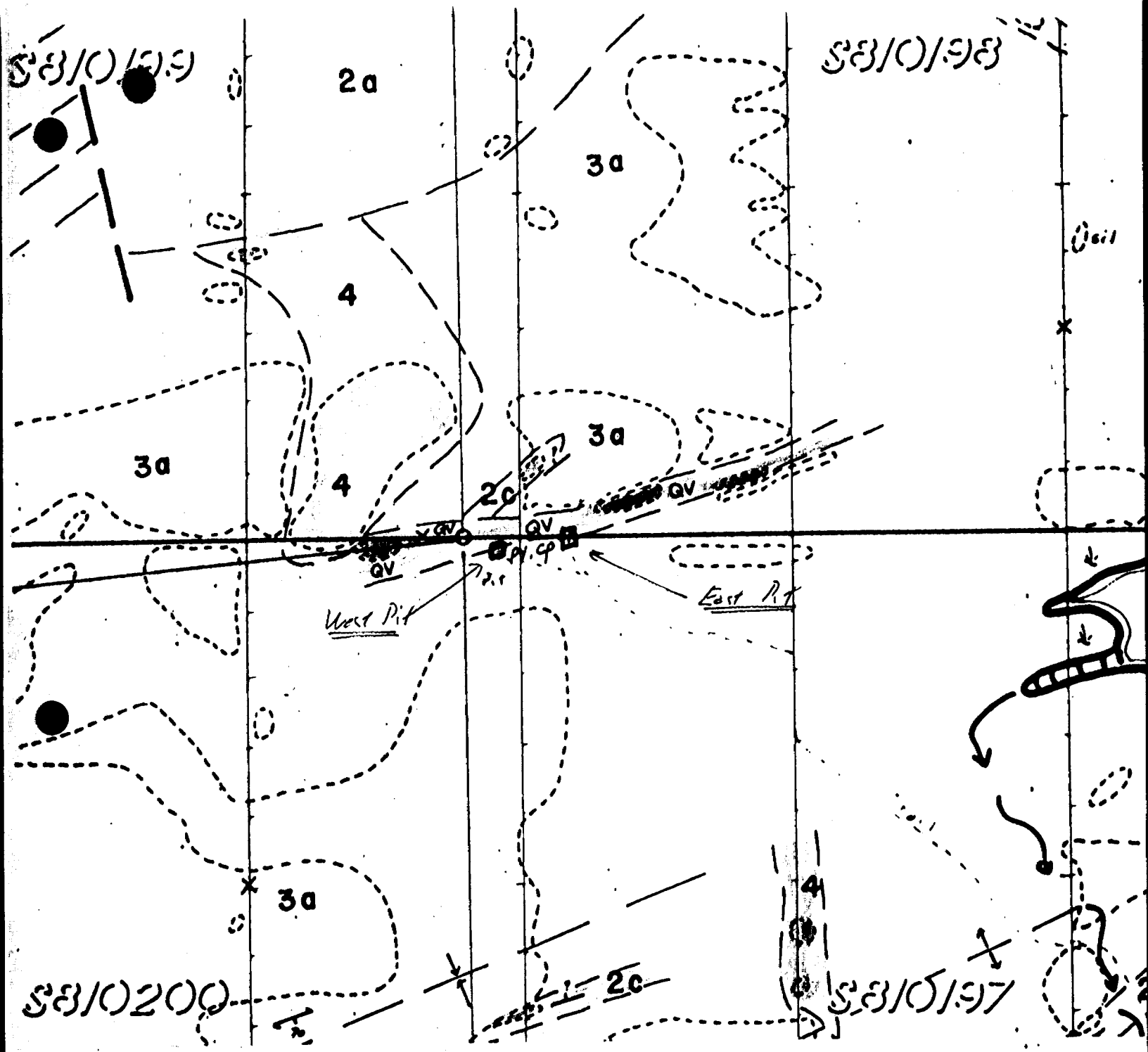
	METHOD	DETECTION LIMIT
CO PPM	DCP	1.000
PD PPB	FADCP	2.000
PT PPB	FADCP	10.000

DATE 11-NOV-86 RECEIVED NOV 14 1986

X-RAY ASSAY LABORATORIES LIMITED
CERTIFIED BY *[Signature]*

NOTE: DETECTION LIMITS WERE ELEVATED DUE TO
SAMPLE SIZE.

SAMPLE	CC PPM	PD PPB	PT PPB
8336	32	<2	<10
8337	35	7	<10
8338	16	24	<10
8339	480	25	<10
8340	8	86	<10
8341	3	9	<10
8342	32	91	<10
8343	580	39	<20
8344	530	37	<20
8345	370	25	<20
8346	300	36	20
8347	600	61	<20
8348	300	53	<20
8349	530	35	<20
8350	400	20	<20



Legend

- [4] Gabbro
- [3] Serpent Fm
3a Quartzite
- [2] Espanola Fm
2a. Calcareous Argillite
2b Argillite
2c Shale, Siltstone
- Q.V. Quartz Vein + Sulphides

Uranex Resources Limited
 Grab Sample Pit Locations
 1" = 20' Nov. 1986



Jan. 12/87

Mining Lands Comments

Clarence Kustra :

The Samples are designated as coming from the East Pit or the West Pit. Locations of the pits are shown on the plans. Is this satisfactory, or do we require the sample locations within each pit?

↓ - Dennis Kinwig
OK

To: Geophysics

Comments

Approved

Wish to see again with corrections

Date

Signature

To: Geology - Expenditures

Comments

The pits are very small and sampling location as indicated is OK.

Approved

Wish to see again with corrections

Date

Signature

Jan 23/87 Kustra

To: Geochemistry

Comments

Approved

Wish to see again with corrections

Date

Signature

To: Mining Lands Section, Room 6610, Whitney Block.

(Tel: 5-4888)

NOTES

400' surface rights reservation along the shores of all lakes and rivers.

All islands in Lake Panache withdrawn from staking November 23, 1926

This Township lies within the Town of WALDEN

SAND & GRAVEL

- ① QUARRY PERMIT
- ② Pit No 944
- ③ QUARTZ
- ④ M.N.R. Gravel Reserve 4E-7

RESERVES

- ① MN Reserve File 90123 v.1
- ② R... for public purposes 24 ch 1954 r... 77094 v.6
- ③ Reserved for public use File.163005

Flooding
Lake Panache; reserving the right to flood and overflow the said lands to elevation 731.1' above mean sea level. survey plan dated 23 Aug '41 by J. Dabie.

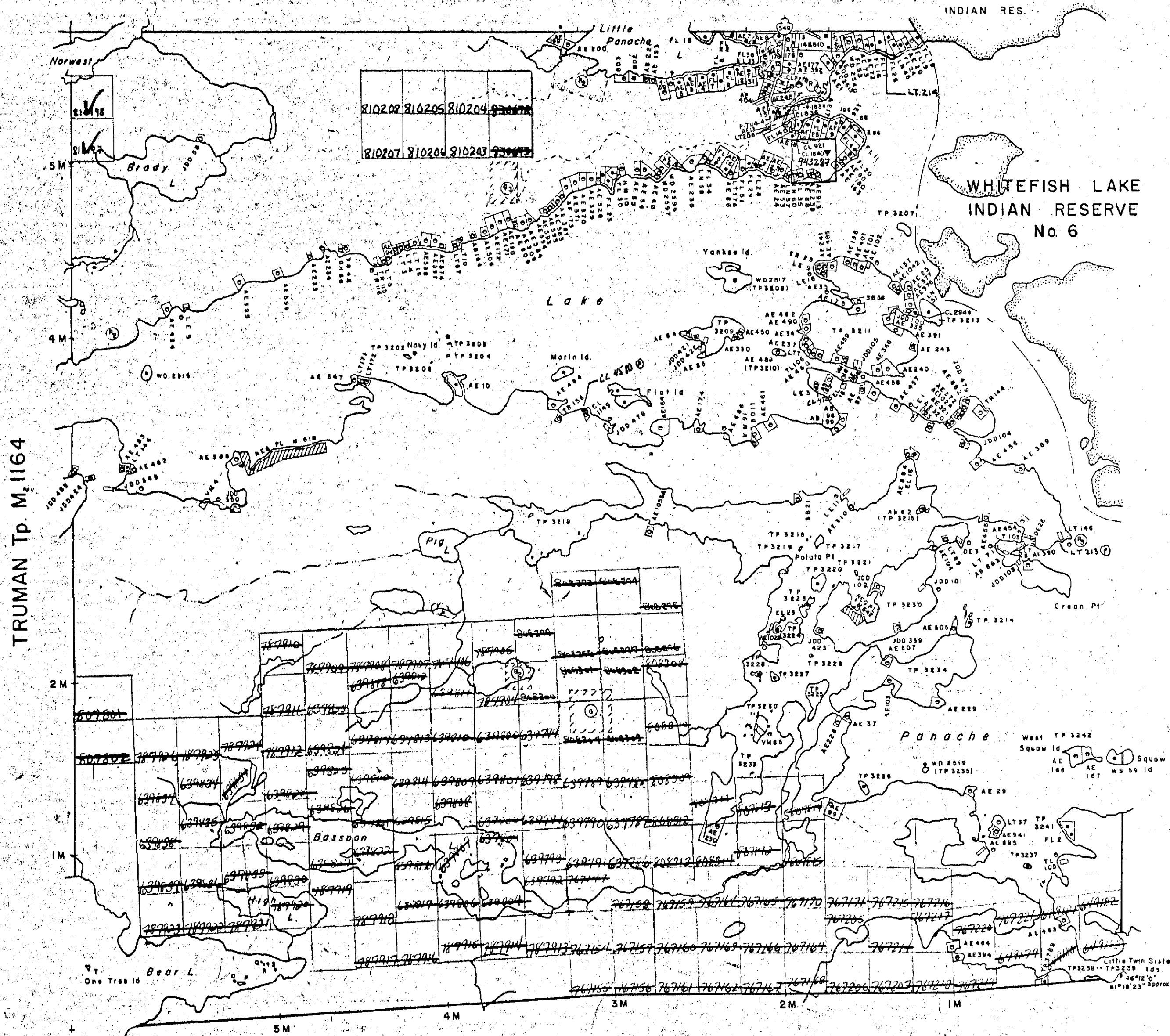
- ② LT 213 - PLAN 53R-10890
- ③ CL4580 - PLAN 53R-10891
- LT 212
- LT 214 - Plan 53R-10489 Parts 1-5 incl.

DATE OF ISSUE

JAN - 9 1987

SUDBURY
MINING RECORDER'S OFFICE

LOUISE Tp. M. 998

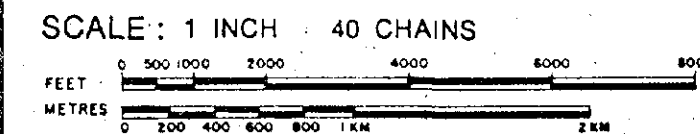


LEGEND

- HIGHWAY AND ROUTE No.
- OTHER ROADS
- TRAILS
- SURVEYED LINES:
TOWNSHIPS, BASE LINES, ETC.
- LOTS, MINING CLAIMS, PARCELS, ETC.
- UNSURVEYED LINES:
LOT LINES
- PARCEL BOUNDARY
- MINING CLAIMS ETC.
- RAILWAY AND RIGHT OF WAY
- UTILITY LINES
- NON-PERENNIAL STREAM
- FLOODING OR FLOODING RIGHTS
- SUBDIVISION
- ORIGINAL SHORELINE
- MARSH OR MUSKEG
- MINES

DISPOSITION OF CROWN LANDS

- | TYPE OF DOCUMENT | SYMBOL |
|---------------------------------|--------|
| PATENT, SURFACE & MINING RIGHTS | ● |
| " SURFACE RIGHTS ONLY | ○ |
| " MINING RIGHTS ONLY | ◐ |
| LEASE, SURFACE & MINING RIGHTS | ■ |
| " SURFACE RIGHTS ONLY | ◼ |
| " MINING RIGHTS ONLY | ◑ |
| LICENCE OF OCCUPATION | ▼ |
| CROWN LAND SALE | C.S. |
| ORDER-IN-COUNCIL | OC |
| RESERVATION | ⊙ |
| CANCELLED | ⊗ |
| SAND & GRAVEL | ⊕ |



ACRES	HECTARES
40	16

TOWNSHIP

DIEPPE

DISTRICT

SUDBURY

MINING DIVISION

SUDBURY

Ministry of Natural Resources

Ontario Surveys and Mapping Branch

Date 6/75 Plan No.

Whitney Block Queen's Park, Toronto **M.761**

CAEN Tp. M. 696

STALIN Tp. M. 1124



4110550016 2.9626 DIEPPE